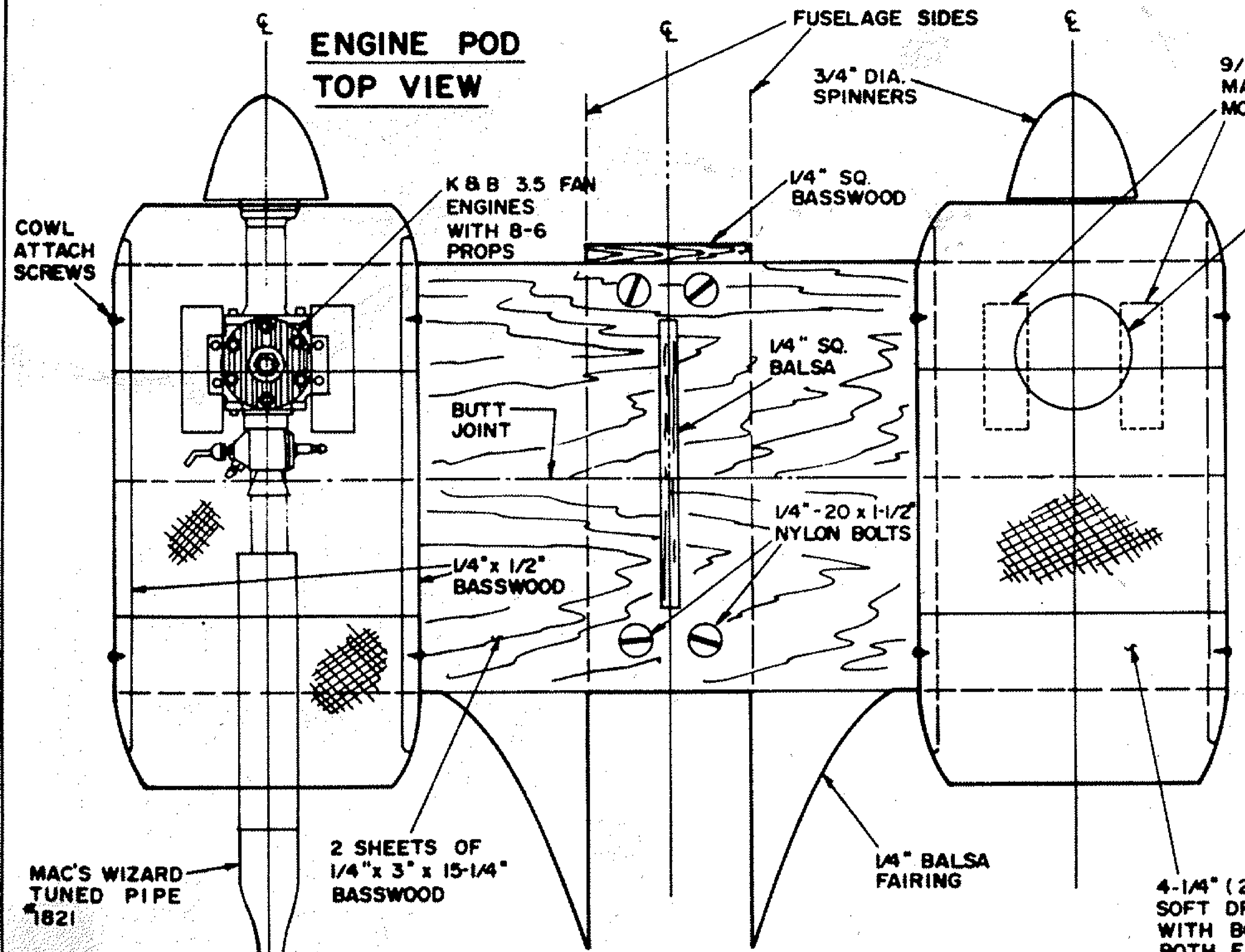
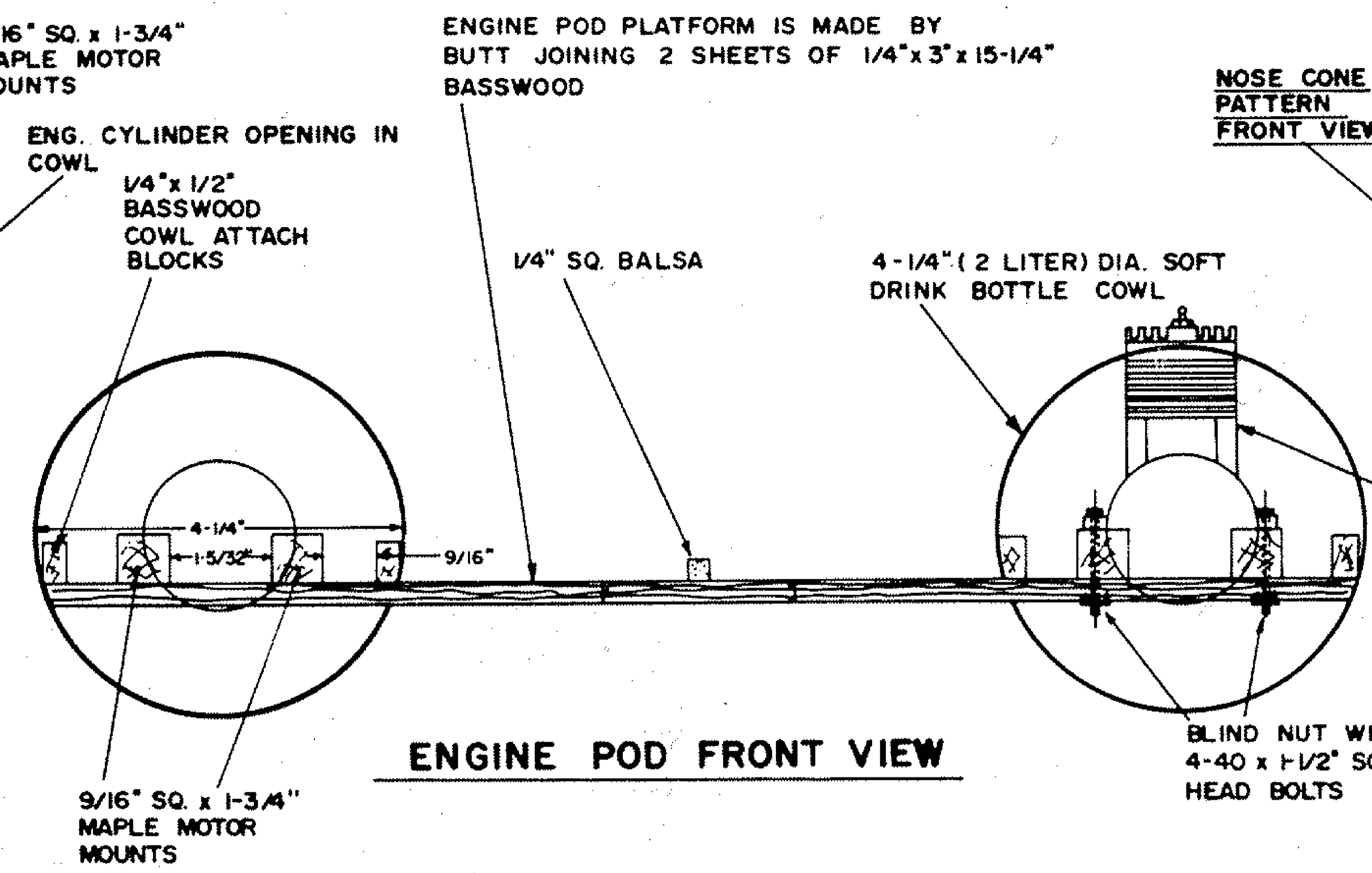


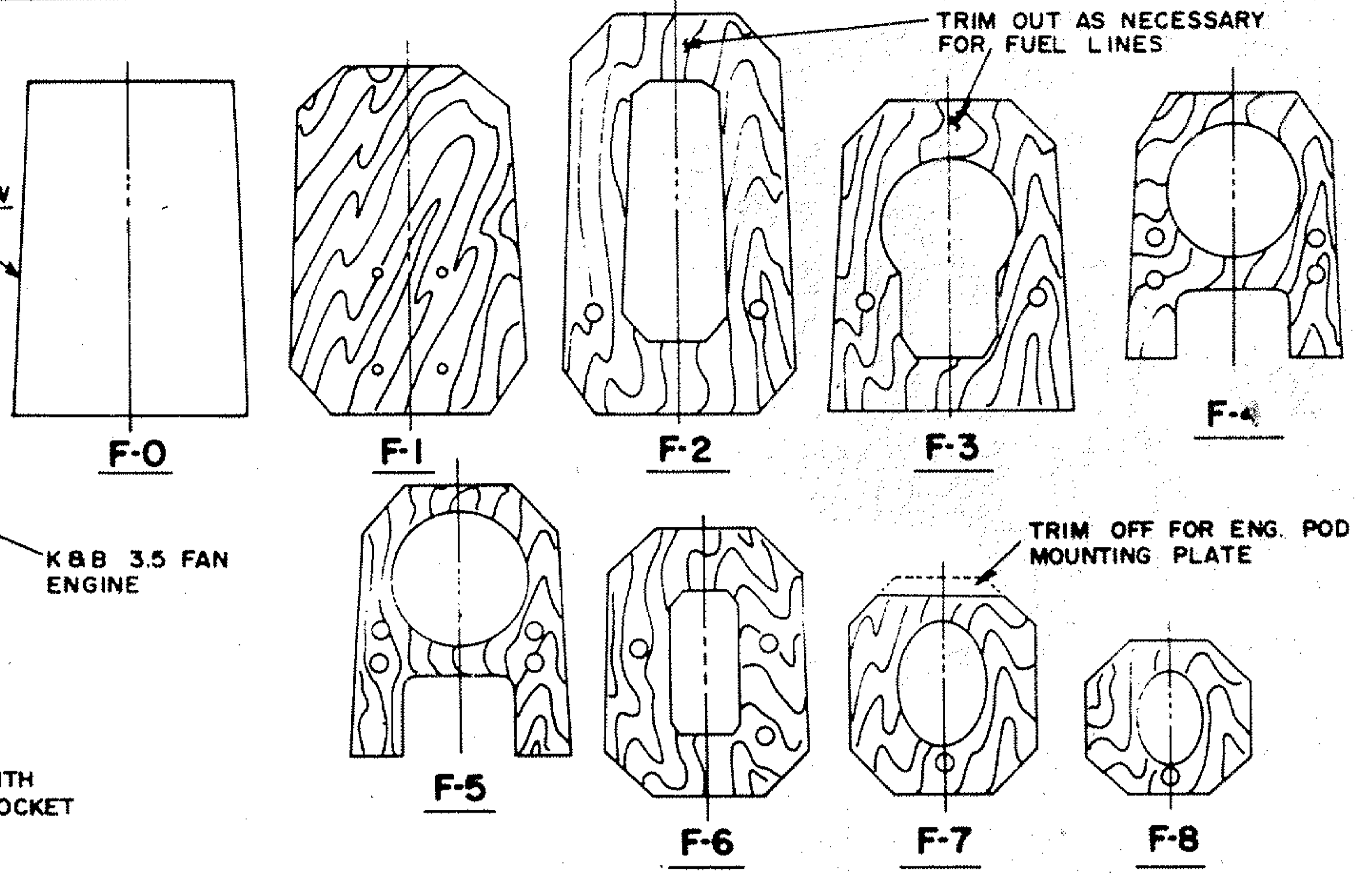
ENGINE POD TOP VIEW



ENGINE POD FRONT VIEW

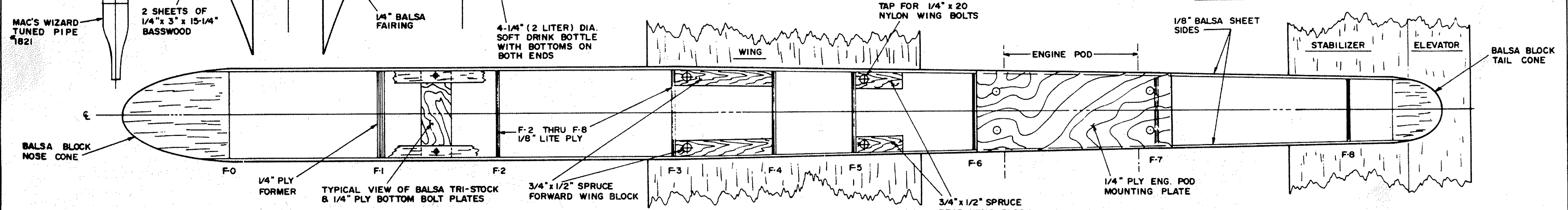


NOSE CONE PATTERN FRONT VIEW

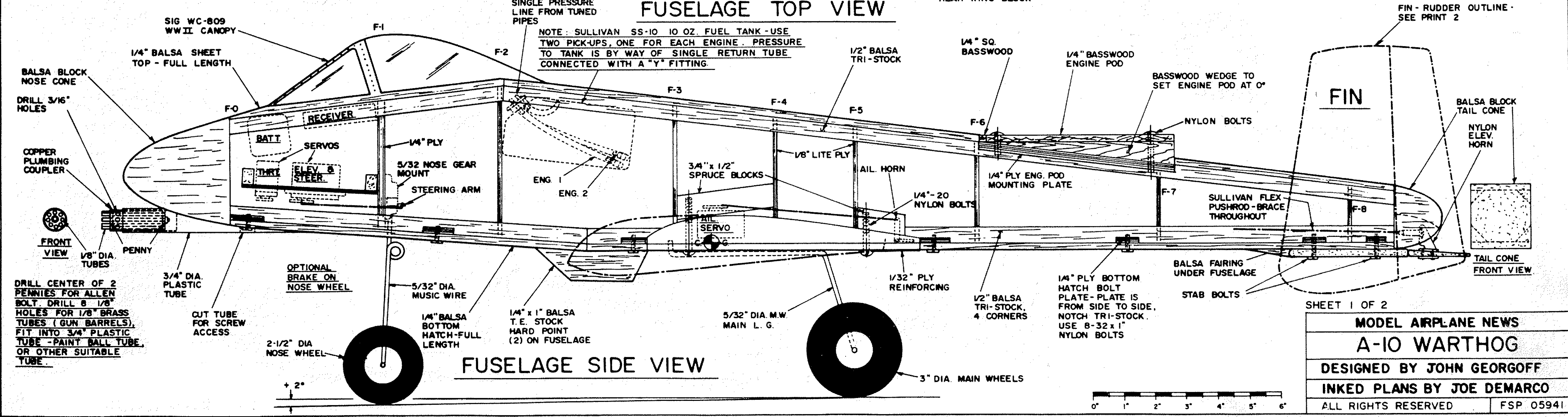


NOTE: ALL FUSELAGE FORMERS ARE 1/8" LITE PLY EXCEPT F-1, 1/4" PLY

FUSELAGE TOP VIEW

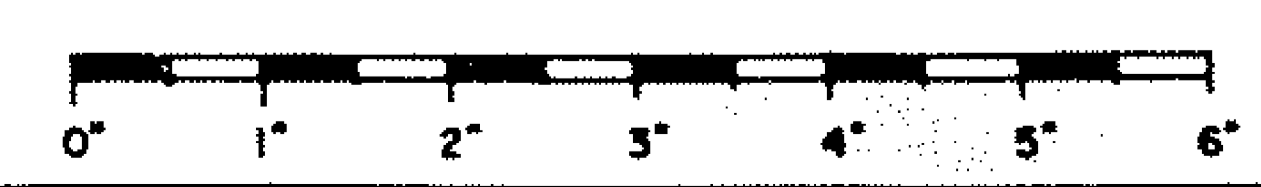


FUSELAGE SIDE VIEW



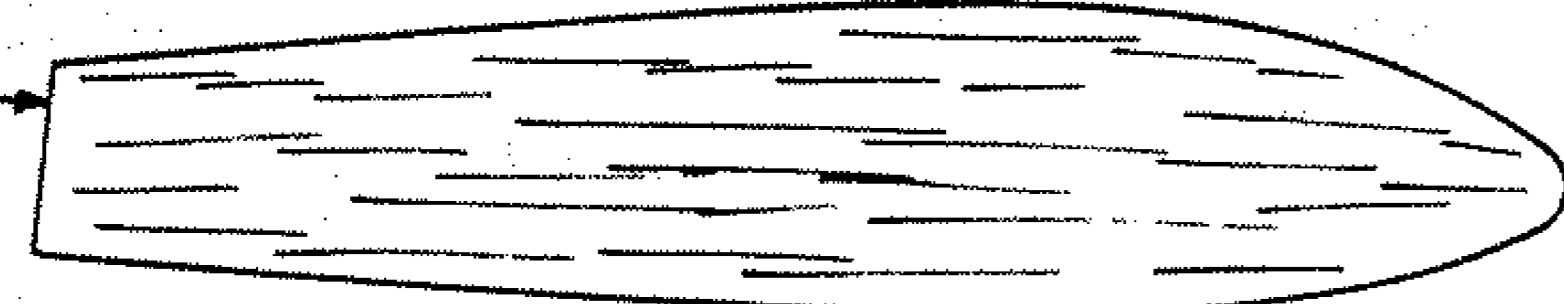
SHEET 1 OF 2

MODEL AIRPLANE NEWS
A-10 WARTHOG
 DESIGNED BY JOHN GEORGOFF
 INKED PLANS BY JOE DEMARCO
 ALL RIGHTS RESERVED | FSP 05941



LAMINATE
1/32" PLY
& 1/4" Balsa
SHEET

WING FLAIR PATTERN



3/4" SQ. x 1/4"
SPRUCE

LANDING GEAR WHEEL PODS ARE MADE FROM
2" SQ. x 11" LONG Balsa BLOCKS

WING PLAN BOTTOM VIEW

1/4" Balsa SHEET
1/32" PLY

Balsa BLOCK
WING TIP

NOTE: WING MOUNTED ORDNANCE IS MADE
USING ESTES ROCKET PRODUCTS

NOTE: WING IS FOAM
CORE WITH 1/64" PLY
WING SKINS-TOP &
BOTTOM

1/8" PLY L.G.
MOUNT -
INSET

CENTER SECTION
HARD POINTS

AILERON
SERVO

5/32" L.G.
CLIPS

5/32" WHEEL
COLLAR

OUTER WING PANEL
HARD POINTS

TYPICAL HINGE
LOCATION

1/4" x 1" Balsa
AILERON STOCK

1/32" PLY REINFORCEMENT
ON WING BOTTOM

AILERON
PUSHRODS
AIL. HORNS

3/32" DIA.
MUSIC WIRE

DIHEDRAL BREAK

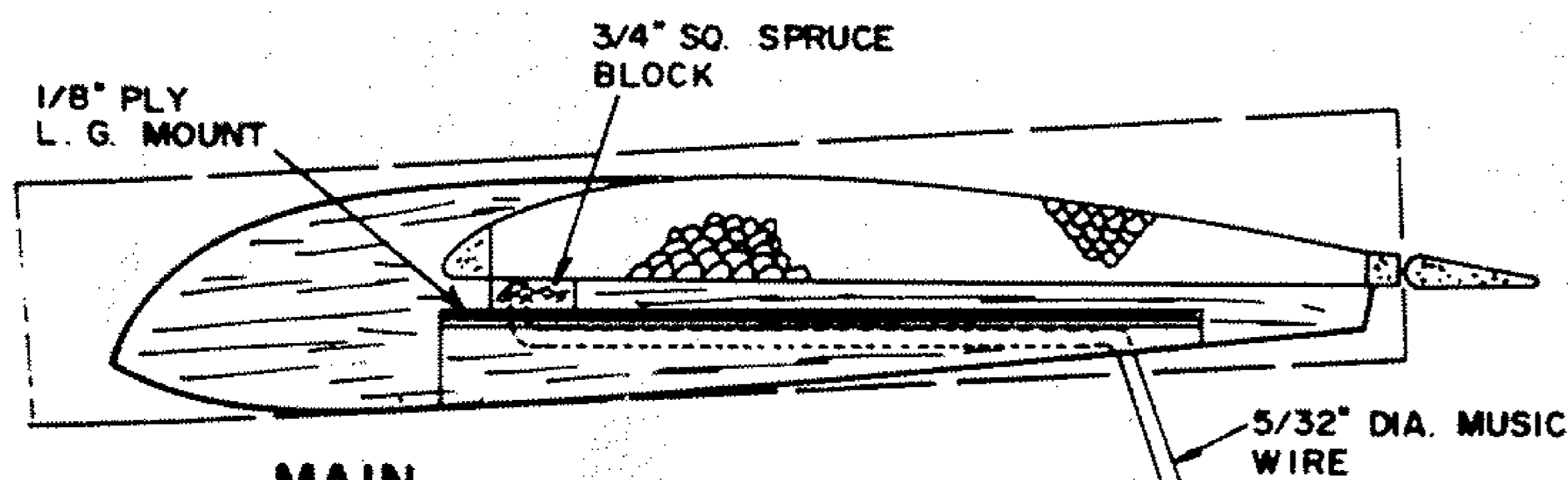
1/4" Balsa SHEET

1/32" PLY

Balsa BLOCK

WING PLAN FRONT VIEW

5/8" DIHEDRAL



MAIN LANDING GEAR DETAIL

5/32" DIA. MUSIC
WIRE

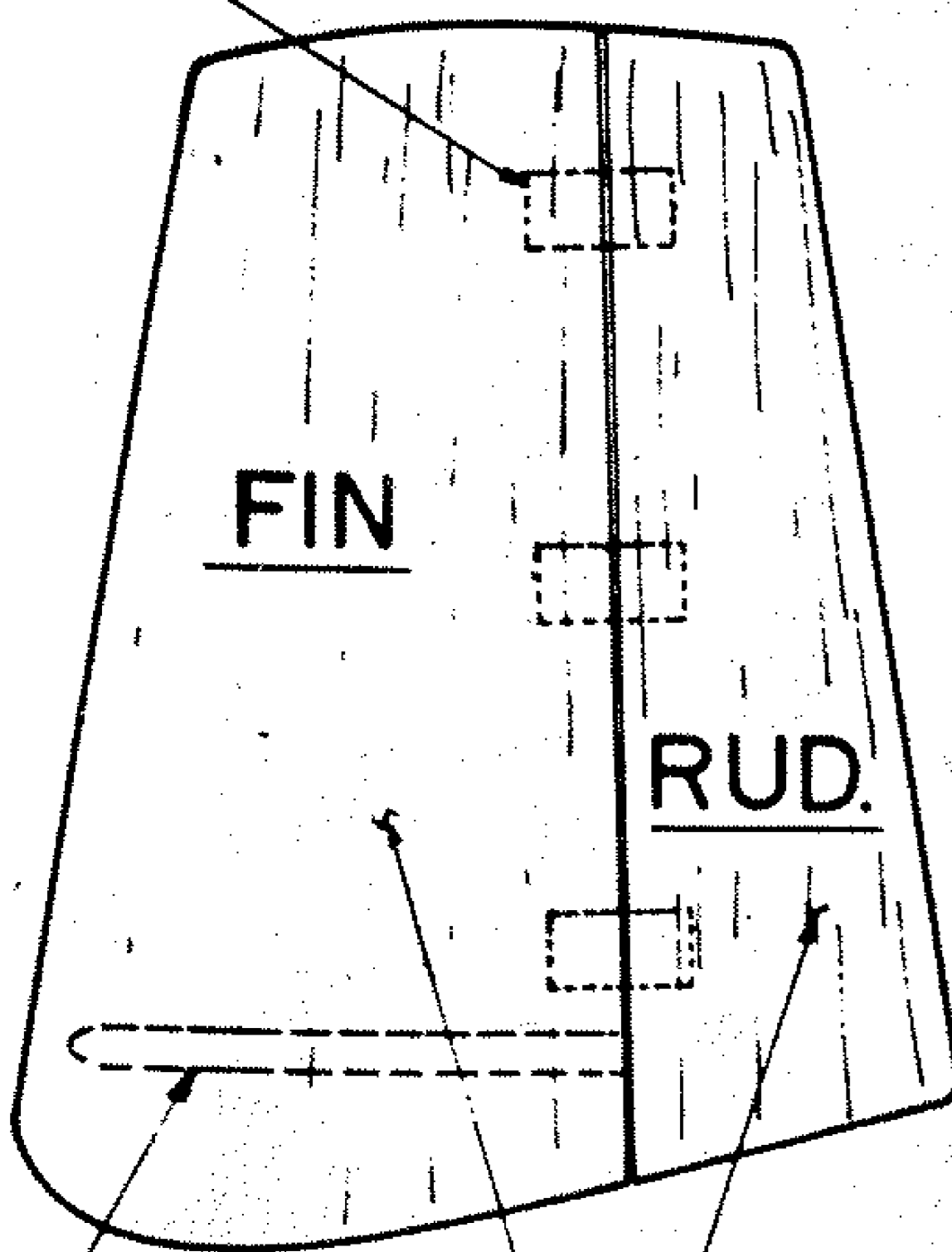
3/4" SQ. SPRUCE
BLOCK

1/8" PLY
L.G. MOUNT

3" DIA. MAIN
WHEELS

NOTE: RUDDER CAN BE
MADE OPERATIONAL IF
DESIRED

TYPICAL HINGE LOCATION
FOR OPERATING RUDDER



STABILIZER
LOCATION

1/4" Balsa
SHEET

1/8" PLY
TEMPLATE

WING SKIN CENTER SECTION

1/64" BIRCH PLY

3/8" x 1/2"
Balsa L.E.

3/8" x 1/2" Balsa L.E.

1/8" PLY WING
ROOT TEMPLATE

WING SKIN RIGHT PANEL

1/64" BIRCH PLY

1" x 1/4" Balsa
AILERON STOCK

1/4" SQ. Balsa T.E.

OUTER WING PANELS

CENTER SECTION

WING HARD POINTS

1/4" x 1" Balsa
T.E. STOCK

STABILIZER

1/32" PLY REINFORCEMENT,
ON BOTTOM

1/8" PLY WING
TIP TEMPLATE

ELEVATOR

1/4" Balsa
SHEET

USE TAPERED
STOCK

HINGE LOCATION

WING SKIN LEFT PANEL

1/64" BIRCH PLY

SHEET 2 OF 2

MODEL AIRPLANE NEWS

A-10 WARTHOG

DESIGNED BY JOHN GEORGOFF

INKED PLANS BY JOE DEMARCO

ALL RIGHTS RESERVED

FSP 05941