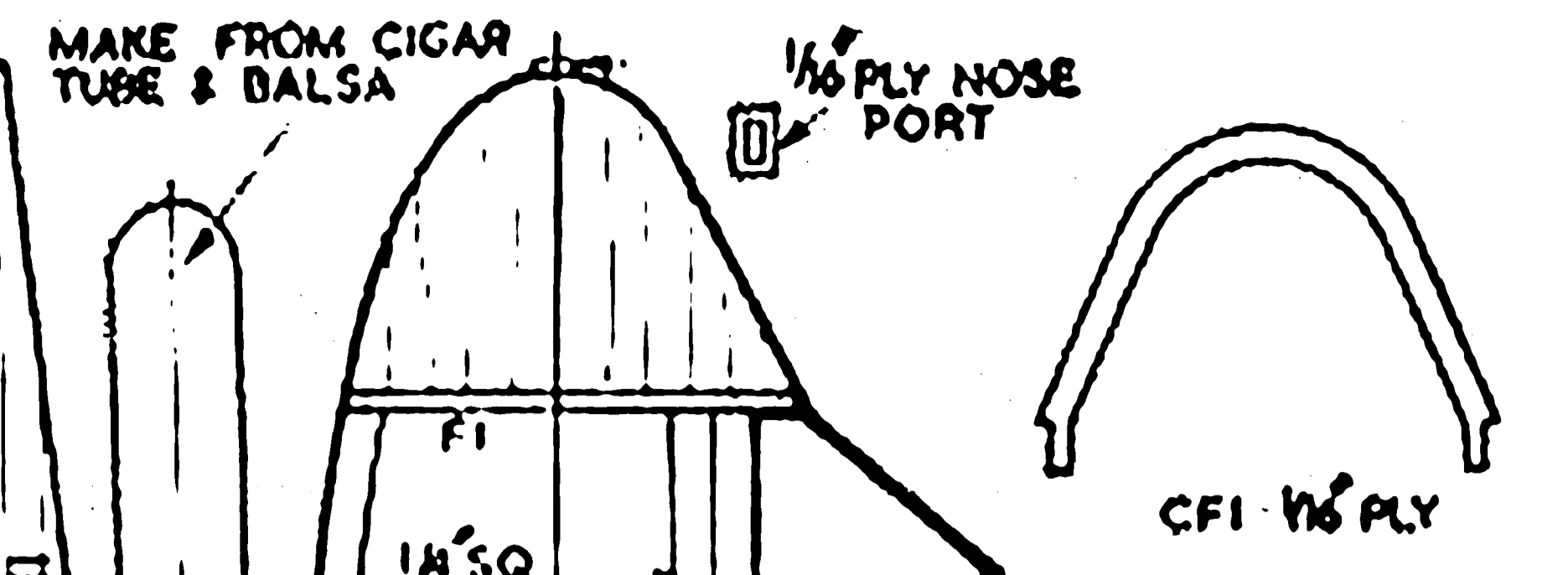
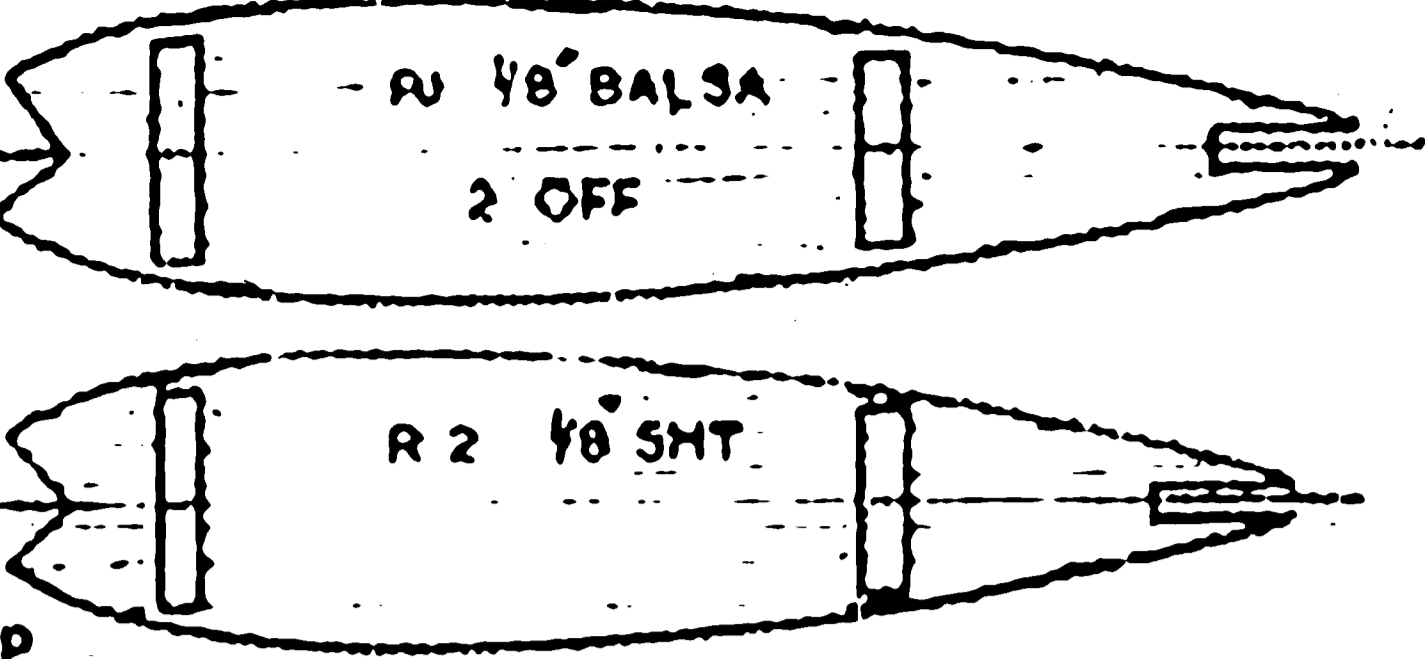


BLOCK Balsa NOSE
2-ED. 2-40 CC ENGINES

CANNON FROM 1/16\"/>



LE 1/2\"/>

LE 1/4\"/>

SHT. TIP

1/8\"/>

F SPAR 1/8\"/>

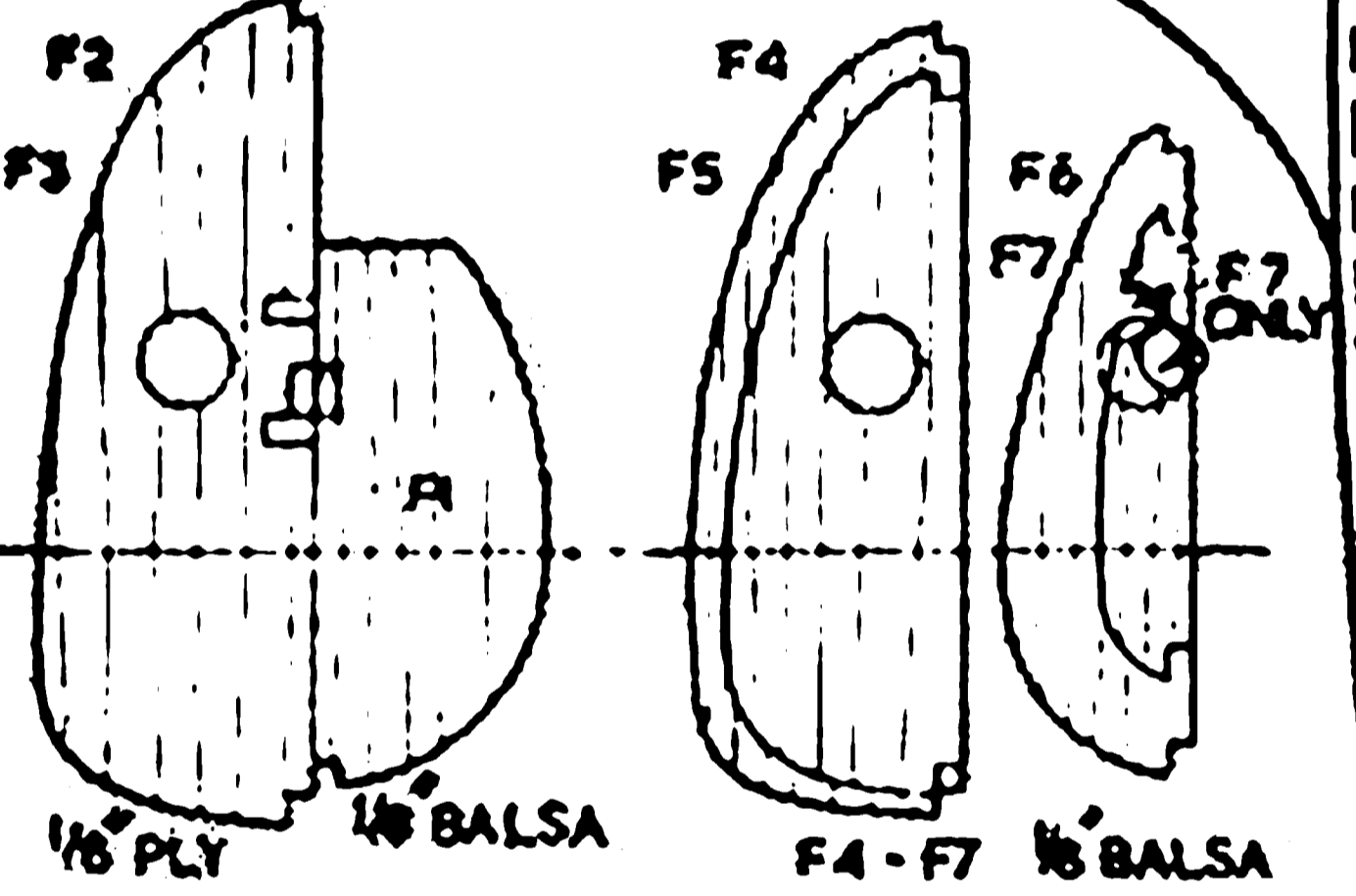
WING TIP WT.

R. SPAR 1/8\"/>

CARD FAIRING

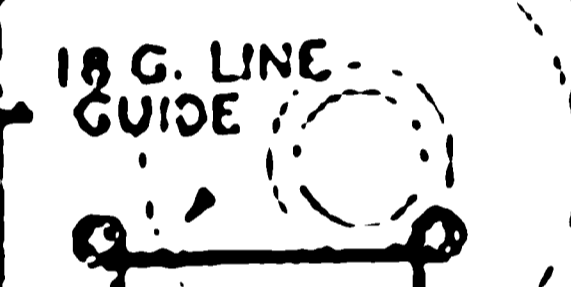
T.E. 1/8\"/>

WINGS COVERED TOP AND BOTTOM WITH 1/16\"/>



1/8\"/>

RIBS PLANKED WITH 1/32\"/>



F5

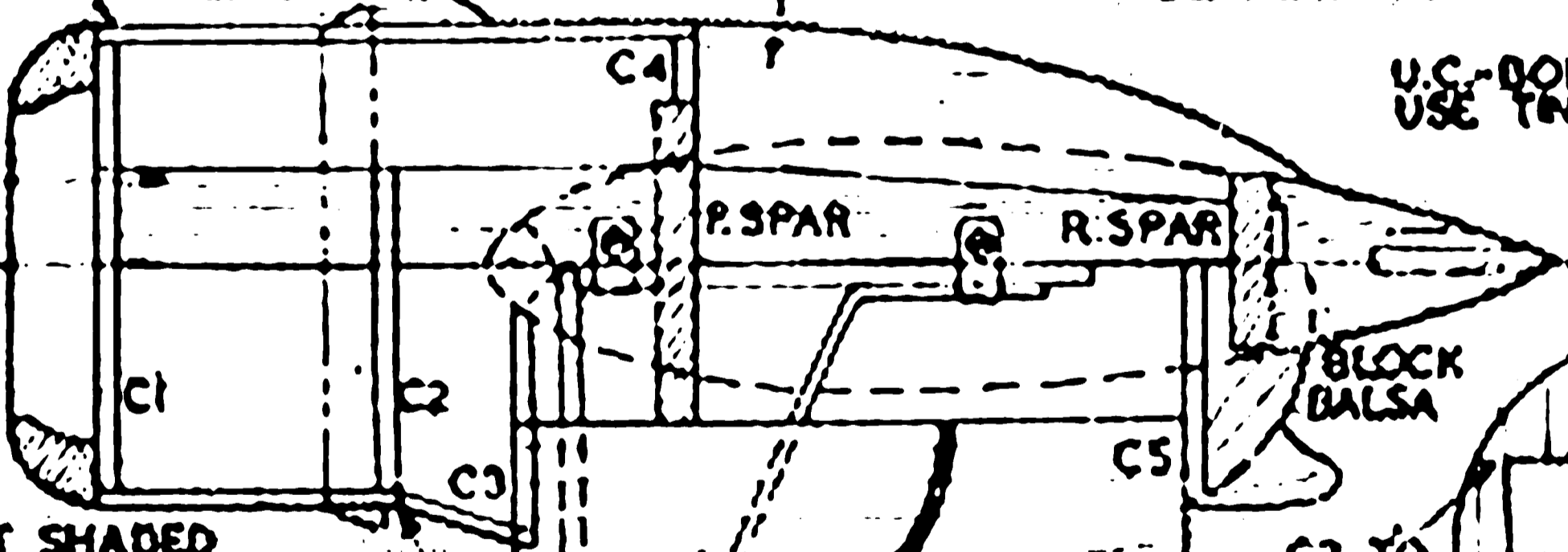
WING PANELS CEMENT SPARS TO C.S. AT CORRECT DIHEDRAL WHEN DRY CEMENT RIBS IN PLACE. ADD LE AND TE

SUPERCHARGER FROM BLOCK Balsa REAR OF C4

FUEL TANK BETWEEN BEARERS & SPARS 2 1/2\"/>

U.G. BOLT TO BEARERS USE TR FOR BRACKETS

BEARERS 1/2\"/>



BLOCK Balsa

C2 TO HERE

REAR WING SPAR 1/8\"/>

FRONT WING SPAR

MAKE PART SHADED THIS DETACHABLE

CRACK PLANKING AT C2 TO REACH C3

2\"/>

16 G. BRACE

16 G. BRACE

WASHERS SPACED WITH FUEL TUBING

NOSE RING FROM BLOCK OR WOUND Balsa

COWL FORMER 1/8\"/>

TAIL PLANE DIHEDRAL 1/2\"/>

TP LAMINATED 1/8\"/>

SILK HINGE BETWEEN LAMINATIONS

18 G. ELEVATOR YOKE

MAKE COWLING GILLS FROM 1/8\"/>

PUSH ROD

WASHER SOLDER ON ASSEMBLY

BRISTOL
BEAUFIGHTER X
MA 275 B.I. FRY 6'
SPAN 39" LENGTH 27"
COPYRIGHT MODEL AIRCRAFT
19-20 NOEL ST. LONDON W1

EA 367

RED WHITE BLUE

TRIM TAB

NAV. LAMPS

FW 3/8\"/>

1/4\"/>

T. WHEEL BND TO 1/4\"/>

14 G. 1\"/>

FRONT MAIN SPAR 1/4\"/>

REAR MAIN SPAR 1/4\"/>

1/4\"/>

STRIP OF 1/32\"/>

YELLOW

YELLOW

WHITE

BLUE

BLUE

CUT FROM BUBBLE CANOPY

PINS FOR BAND

TORPEDO SUPPORT

CUT TO INSTALL C.S. THEN REPLACE

1/16\"/>

1 1/4\"/>

CF1 1/16\"/>

F1

CF1

F2

1/2\"/>

F3

F4

F5

F6

1/4\"/>

14 G.

1 1/2\"/>

100 750