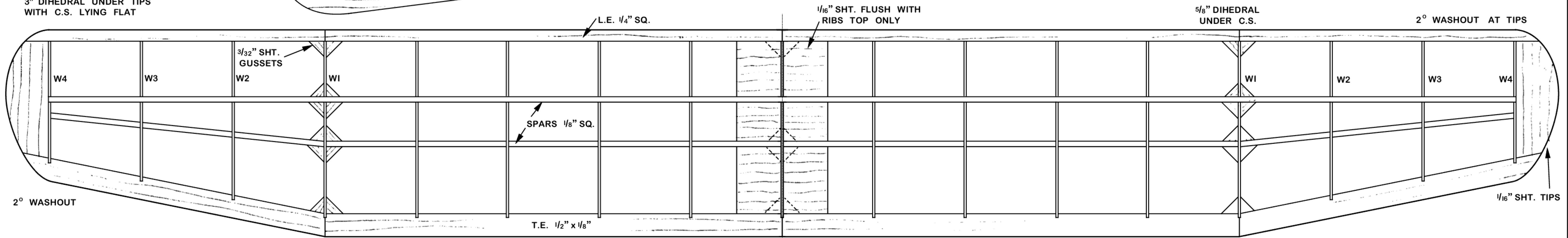
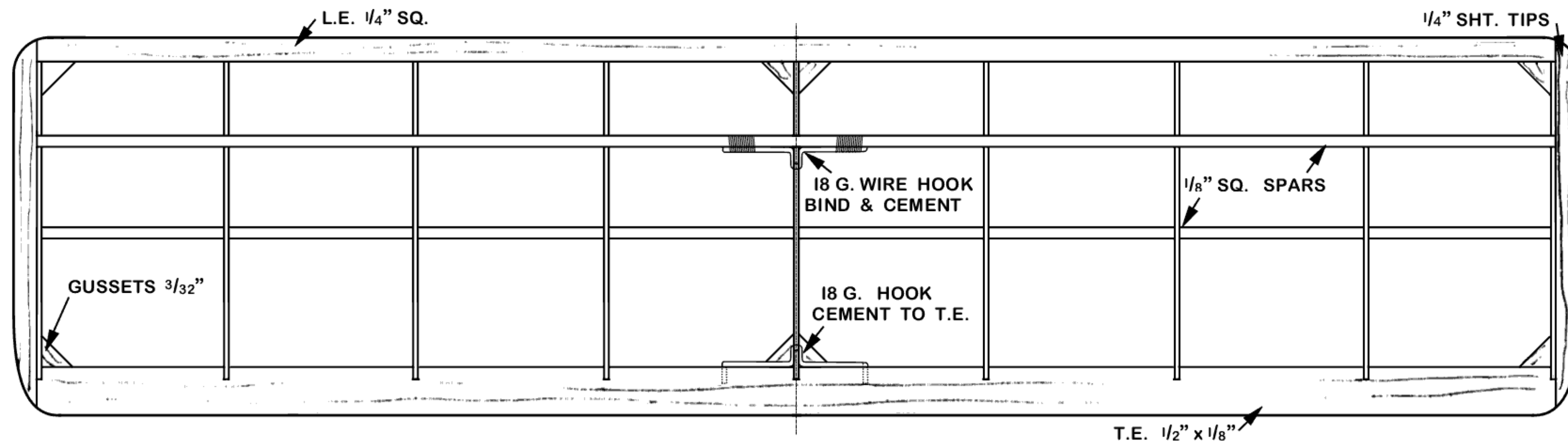


3" DIHEDRAL UNDER TIPS
WITH C.S. LYING FLAT



2° WASHOUT

3° WASHOUT STBD.
C.S. ONLY



1/2" x 1/16" STOPS. CEMENT TO
L.E. & T.E. SAND FLAT
TO GIVE GOOD WING
SEATING

MATERIALS REQUIRED

- | | | |
|----------|--------------------|----------------|
| 1 SHT. | 1/4" x 3" x 36" | BALSA HARD |
| 1 SHT. | 1/16" x 3" x 36" | BALSA MED HARD |
| 1 SHT. | 3/32" x 3" x 36" | BALSA MED HARD |
| 2 STRIPS | 1/4" SQ. x 36" | BALSA HARD |
| 2 STRIPS | 1/2" x 1/8" x 36" | BALSA MED HARD |
| 4 STRIPS | 1/8" SQ. x 36" | BALSA HARD |
| 6 | 1/8" DOWELS | |
| 1 PIECE | 5/16" x 1/4" x 12" | HARD WOOD |
| 1 PIECE | 18 G. x 6" | PIANO WIRE |
| 2 SHEETS | LIGHTWEIGHT | MODELSPAN |

WUNDA
M A
345 P. NEWELL 3/6
SPAN 34" LENGTH 28"
ENGINE 75 CC
MODEL AIRCRAFT 1961
19-20 NOEL ST. LONDON W1