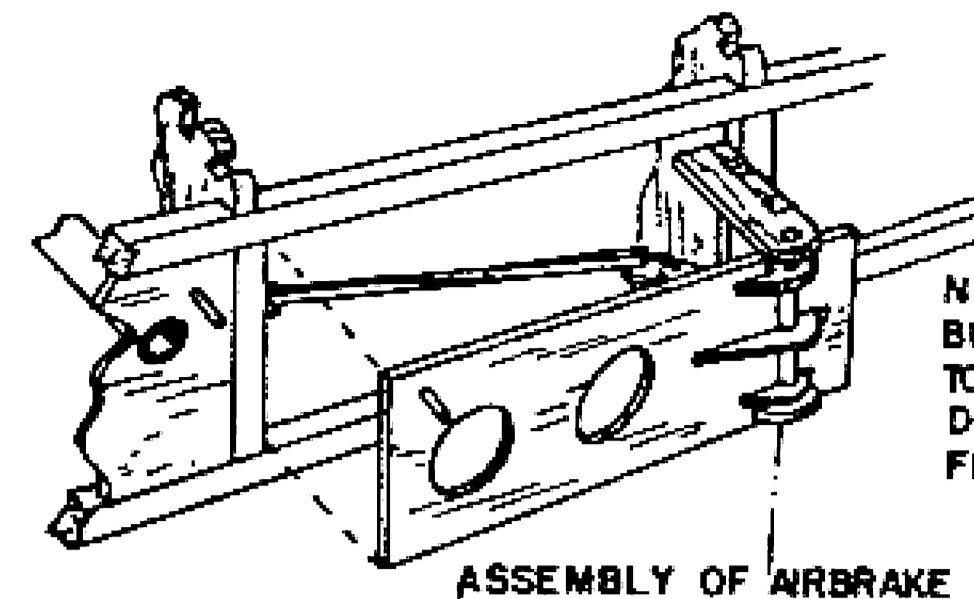


STAR DUST
 DESIGNED BY
W.B. Hart
 COPYRIGHT OF
THE AEROMODELLER PLANS SERVICE
 38, CLARENDON RD., WATFORD, HERTS

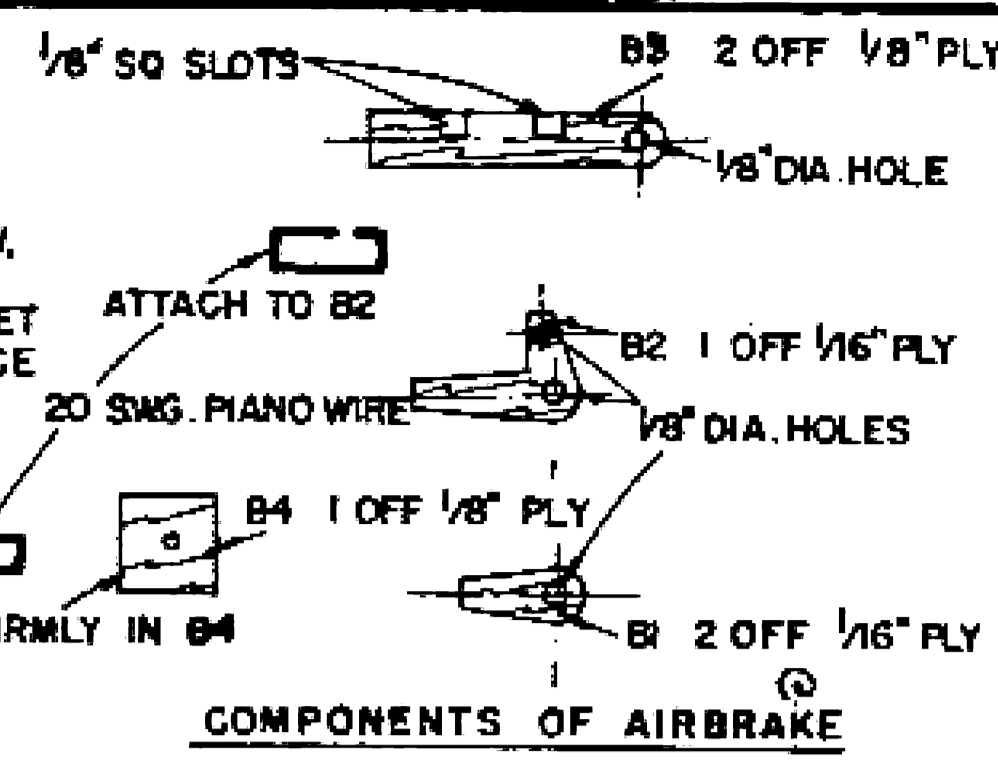
ALL WOODS ARE BALSA UNLESS OTHERWISE STATED



NOTE: HINGES B1, B2 CEMENTED TO 1/8" DOWEL BUT DOWEL MUST BE A FREE FIT IN B3.

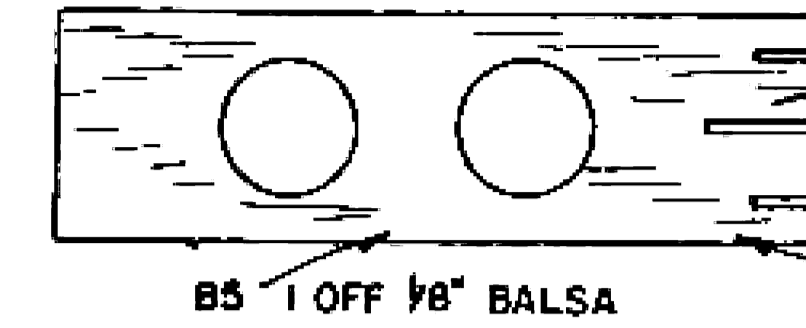
FUSELAGE CONSTRUCTION

GLUE BEARERS IN TO F1, 3 & 4.
 BUILD BASIC SIDE FRAMES OVER SIDE VIEW.
 ASSEMBLE SIDE FRAMES WITH BEARER SUB
 ASSEMBLY AND FORMERS. LET IN 1/8" SHEET
 PANELS. GLUE TONGUE SECURELY IN PLACE.
 ADD STRINGERS AND TAIL BLOCK.
 BUILD IN TAILPLANE WITH 1/8" SHEET

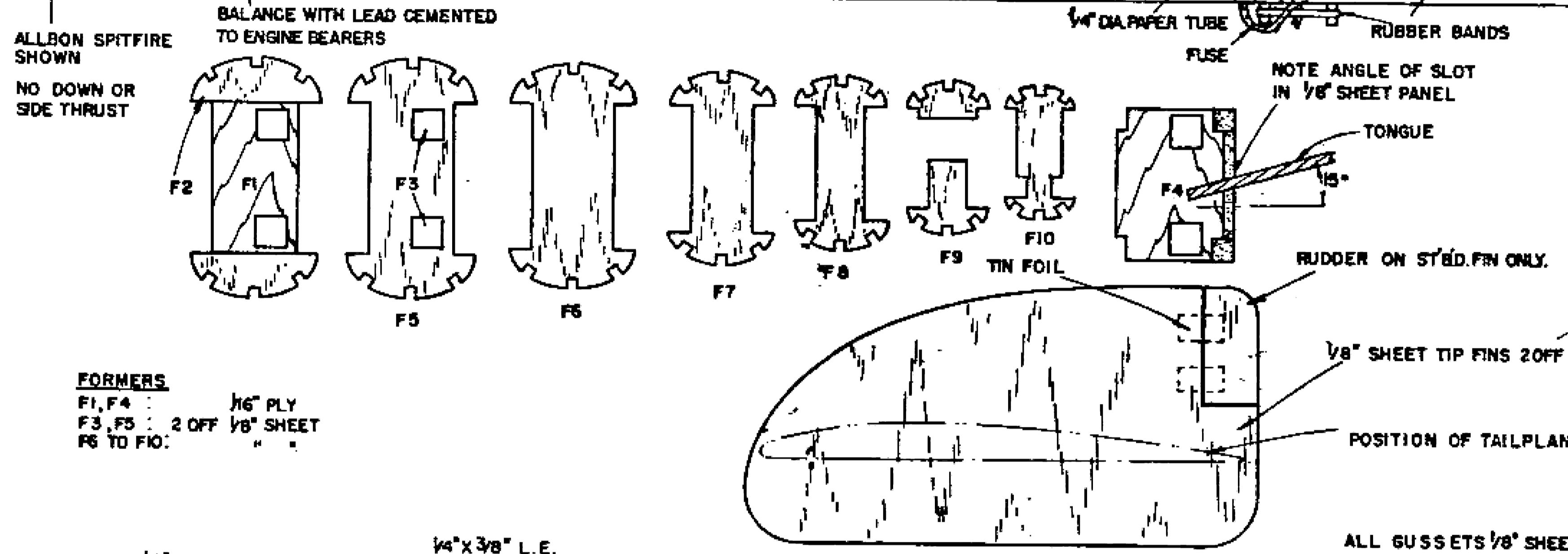
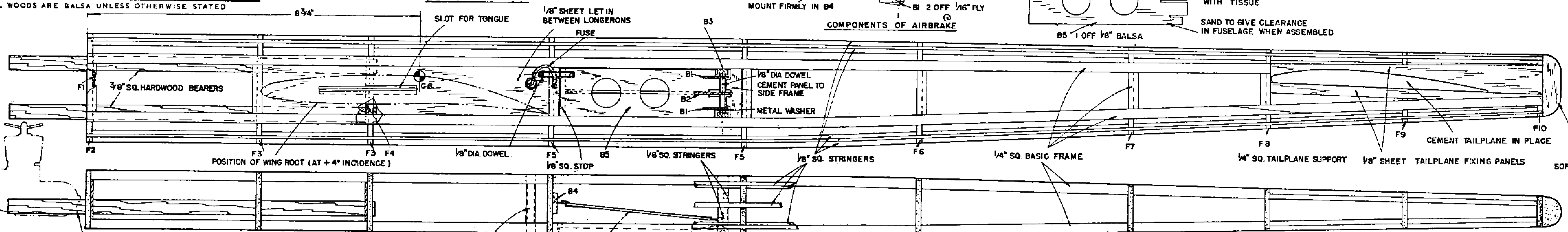


COVERING

COVER WHOLE MODEL WITH HEAVY MODELSPAN & GIVE 2 COATS OF CLEAR DOPE. PIN WINGS & TAIL TO A FLAT SURFACE WHEN TOUCH DRY



MATERIALS REQUIRED		MISCELLANEOUS
2 SHEETS OF 1/16" X 3" X 36"		1 3/4" OF 1" X 1/2" BLOCK
2 " " " 1/8" " "		20" X 3/8" SQ. HARDWOOD
12 STRIPS = 1/8" SQ. "		3" X 6" OF 1/8" PLY
7 " " " 1/4" " "		5" X 8" X 1/16" "
2 " " " 1/4" X 3/8" "		TISSUE, CEMENT, DOPE.
3 " " " 1/8" X 1/2" "		



FORMERS
 F1, F4 : 1/16" PLY
 F3, F5 : 2 OFF 1/8" SHEET
 F6 TO F10: " "

