

A 40" SPAN MODEL FOR 1-2 cc BASED ON MEMORY OF A 1946 DESIGN.
 THE ORIGINAL COULD BE DESIGNED AS AN "TERRA LADY"
 INFLUENCED BY A LITTLE-KNOWN PAUL FLEISCH MODEL.

FUSELAGE CONSTRUCTION SEQUENCE

1. BUILD CRUTCH
2. ADD FORMERS
3. ADD BOTTOM STRINGERS
4. ADD TOP LONGERONS
5. FIT BEARERS, SHEETING COIL BLOCKS ETC.

ALL WOODS Balsa UNLESS OTHERWISE STATED

ALTERNATIVE COIL CURVE

ALTERNATIVE SPINNER

ELECTRIC VERSION (1996)

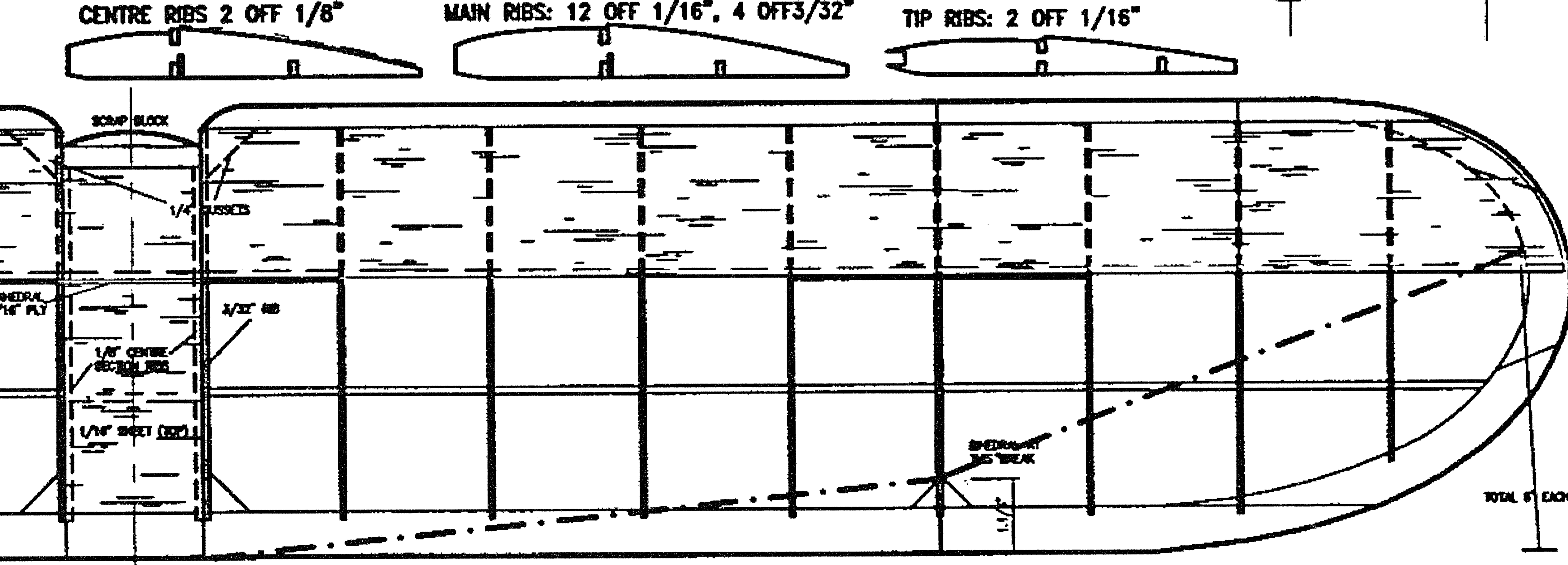
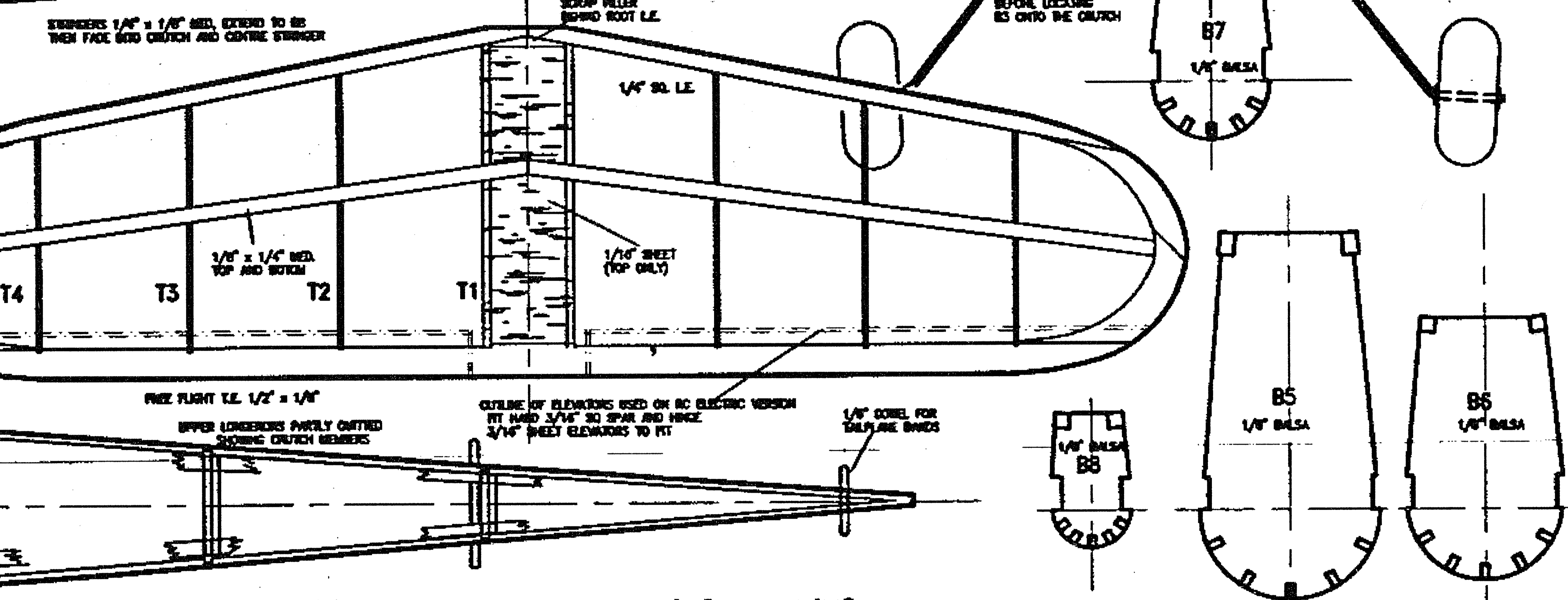
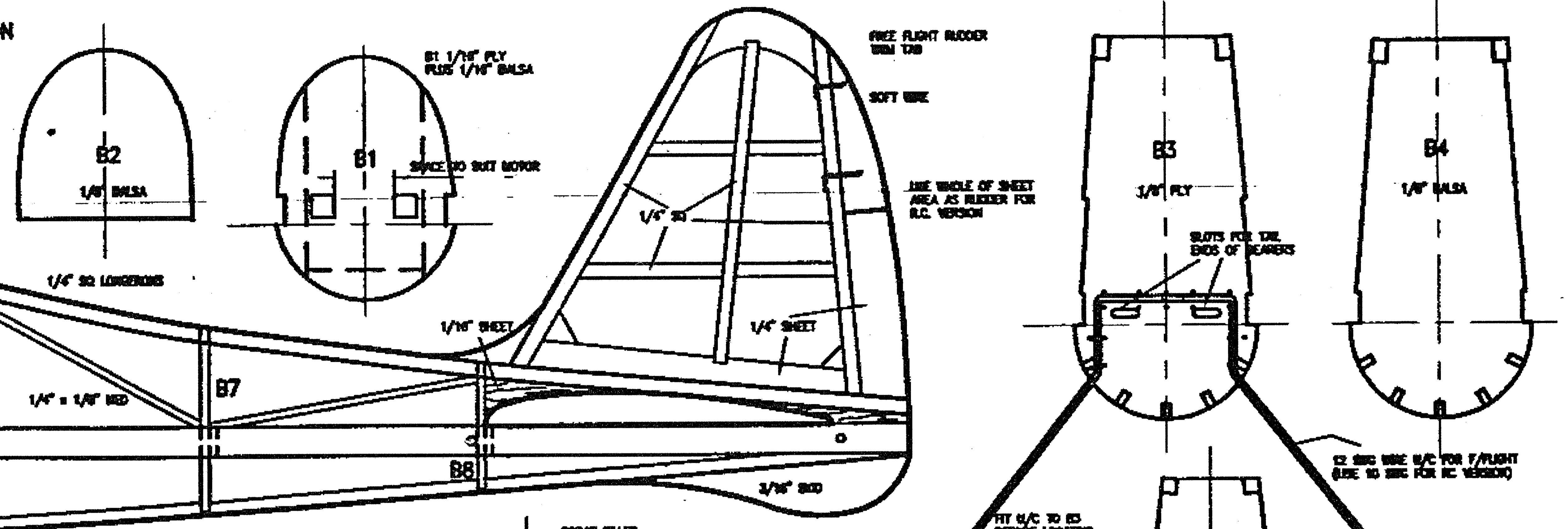
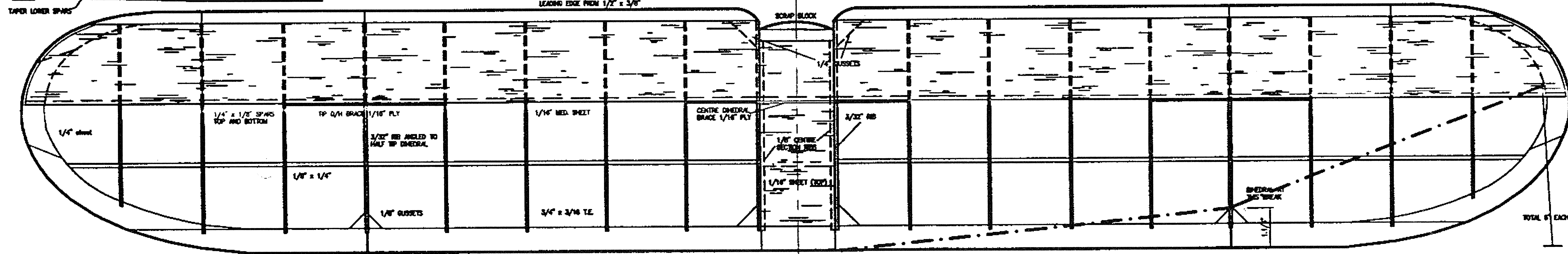
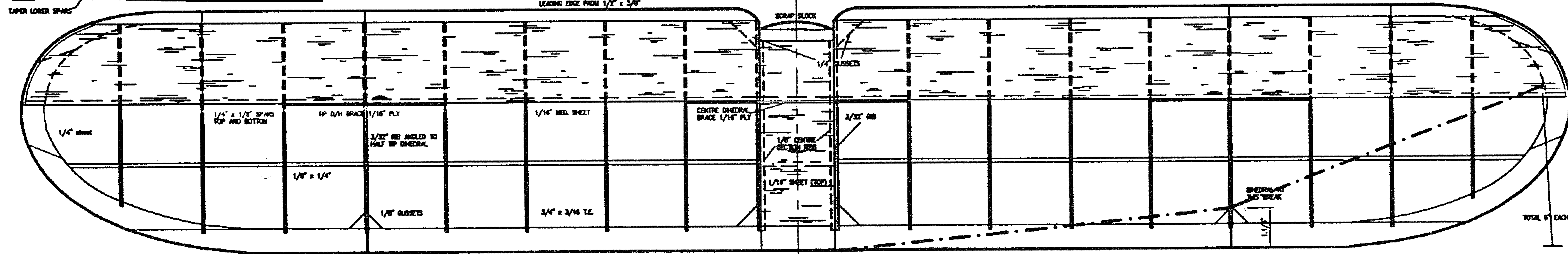
MY BRADLEY'S MODEL USED GRAPHITE SPEED 400 WITH PG 1.5ST BEAR BOX AND 9 x 5 GRAPHITE SLIPRING WITH BENT Balsa BEARING AS CELLS. BEARING WAS NITED WITH 4-0H WITH 190mAh BATTERY, TWO MICRO SERVO AND GORDON TAPLING MICROSTAR 10 SPEED CONTROLLER. FLYING WEIGHT 28.8g/oz (016 gms) FLIGHT DURATION APPROX 25 min AVERAGE PER CHARGE.

DIHEDRAL BRACES 1/16" PLY

- 1 OFF (CENTRE)
 - 2 OFF (TOP DIHEDRAL)
- BEARER SPACING TO SUIT MOTOR WIDTH
- PACK UNDER TOP 1/16"
- TAPER LOWER SPARS

OUT TOP SPAR AND SHEETING

TAPER LOWER SPARS



SOFT WIRE

USE WHOLE OF SHEET AREA AS RUBBER FOR R.C. VERSION

12 SWG WIRE 1/2" FOR FLIGHT (SEE 10 SWG FOR RC VERSION)

SCRAP FILLER BEHIND ROOT L.E.

1/4" SD LONGERONS

1/4" x 1/8" MED

1/4" SD

3/16" SD

1/4" SD

1/4" SD

1/4" SD

1/4" SD

1/4" SD

1/4" SD

1/4" SD

1/4" SD

1/4" SD

1/4" SD

1/4" SD

1/4" SD

1/4" SD

1/4" SD

1/4" SD

1/4" SD

1/4" SD

1/4" SD

1/4" SD

1/4" SD

1/4" SD

1/4" SD

1/4" SD

1/4" SD

1/4" SD

1/4" SD

1/4" SD

1/4" SD

1/4" SD

1/4" SD

1/4" SD

1/4" SD

1/4" SD

1/4" SD

1/4" SD

1/4" SD

1/4" SD

1/4" SD

1/4" SD

1/4" SD

1/4" SD

1/4" SD

1/4" SD

1/4" SD

1/4" SD

1/4" SD

1/4" SD

1/4" SD

1/4" SD

1/4" SD

1/4" SD

1/4" SD

1/4" SD

1/4" SD

1/4" SD

1/4" SD

1/4" SD

1/4" SD

1/4" SD

1/4" SD

1/4" SD

1/4" SD

1/4" SD

1/4" SD

1/4" SD

1/4" SD

1/4" SD

1/4" SD

1/4" SD

1/4" SD

1/4" SD

1/4" SD

1/4" SD

1/4" SD

1/4" SD

1/4" SD

1/4" SD

1/4" SD

1/4" SD

1/4" SD

1/4" SD

1/4" SD

1/4" SD

1/4" SD

1/4" SD

1/4" SD

1/4" SD

1/4" SD

1/4" SD

1/4" SD

1/4" SD

1/4" SD

1/4" SD

1/4" SD

1/4" SD

1/4" SD

1/4" SD

1/4" SD

1/4" SD

1/4" SD

1/4" SD

1/4" SD

1/4" SD

1/4" SD

1/4" SD

1/4" SD

1/4" SD

1/4" SD

1/4" SD

1/4" SD

1/4" SD

1/4" SD

1/4" SD

1/4" SD

1/4" SD

1/4" SD

1/4" SD

1/4" SD

1/4" SD

1/4" SD

1/4" SD

1/4" SD

1/4" SD

1/4" SD

1/4" SD

1/4" SD

1/4" SD

1/4" SD

1/4" SD

1/4" SD

1/4" SD

1/4" SD

1/4" SD

1/4" SD

1/4" SD

1/4" SD

1/4" SD

1/4" SD

1/4" SD

1/4" SD

1/4" SD

1/4" SD

1/4" SD

1/4" SD

1/4" SD

1/4" SD

1/4" SD

1/4" SD

1/4" SD

1/4" SD

1/4" SD

1/4" SD

1/4" SD

1/4" SD

1/4" SD

1/4" SD

1/4" SD

1/4" SD

1/4" SD

1/4" SD

1/4" SD

1/4" SD

1/4" SD

1/4" SD

1/4" SD

1/4" SD

1/4" SD

1/4" SD

1/4" SD

1/4" SD

1/4" SD

1/4" SD

1/4" SD

1/4" SD

1/4" SD

1/4" SD

1/4" SD

1/4" SD

1/4" SD

1/4" SD

1/4" SD

1/4" SD

1/4" SD

1/4" SD

1/4" SD

1/4" SD

1/4" SD

1/4" SD

1/4" SD

1/4" SD

1/4" SD

1/4" SD

1/4" SD

1/4" SD

1/4" SD

1/4" SD

1/4" SD

1/4" SD

1/4" SD

1/4" SD

1/4" SD

1/4" SD

1/4" SD

1/4" SD

1/4" SD

1/4" SD

1/4" SD

1/4" SD

1/4" SD

1/4" SD

1/4" SD

1/4" SD

1/4" SD

1/4" SD

1/4" SD

1/4" SD

1/4" SD

1/4" SD

1/4" SD

1/4" SD

1/4" SD

1/4" SD

1/4" SD

1/4" SD

1/4" SD

1/4" SD

1/4" SD

1/4