

# MILES M.48.

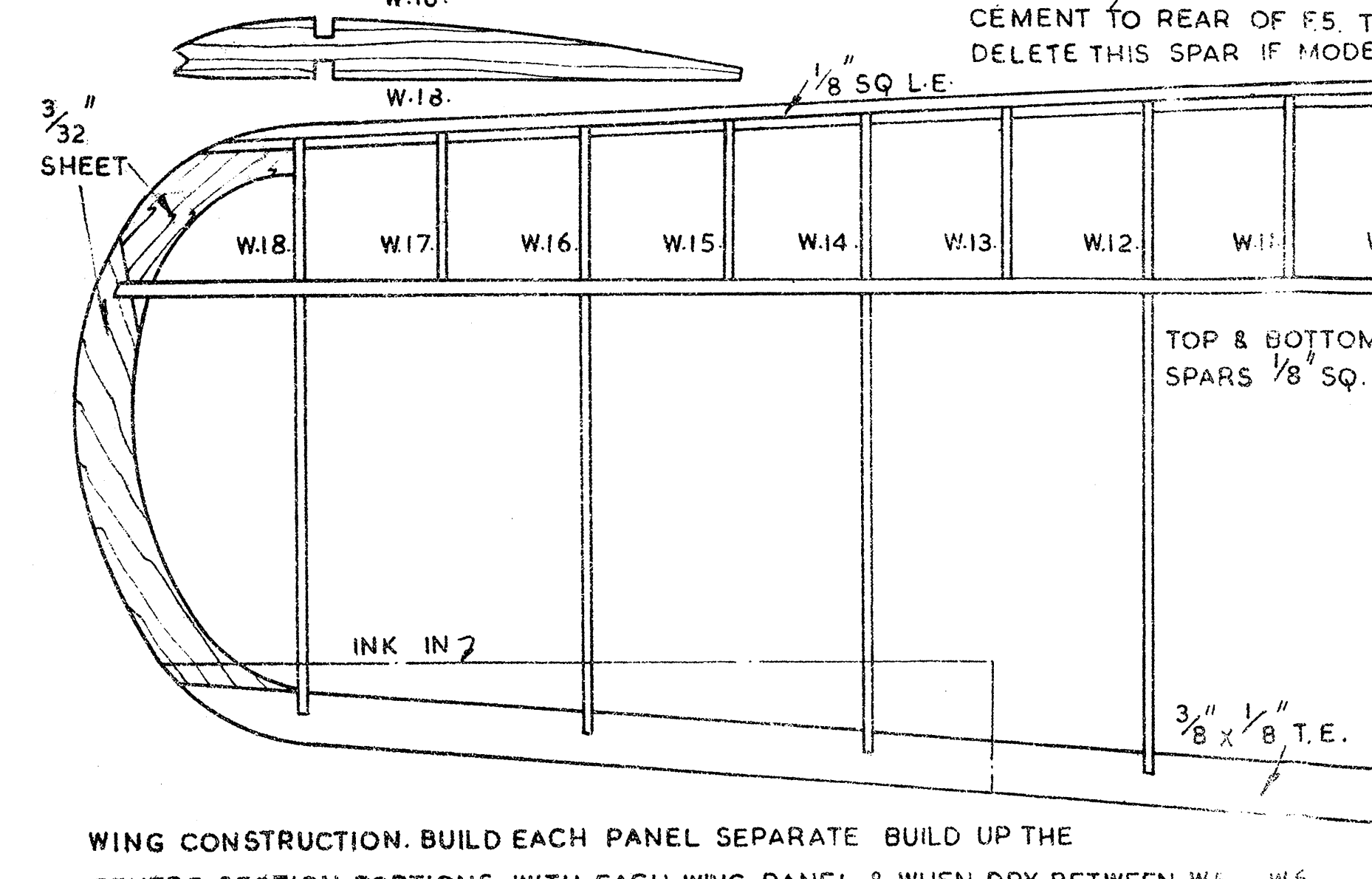
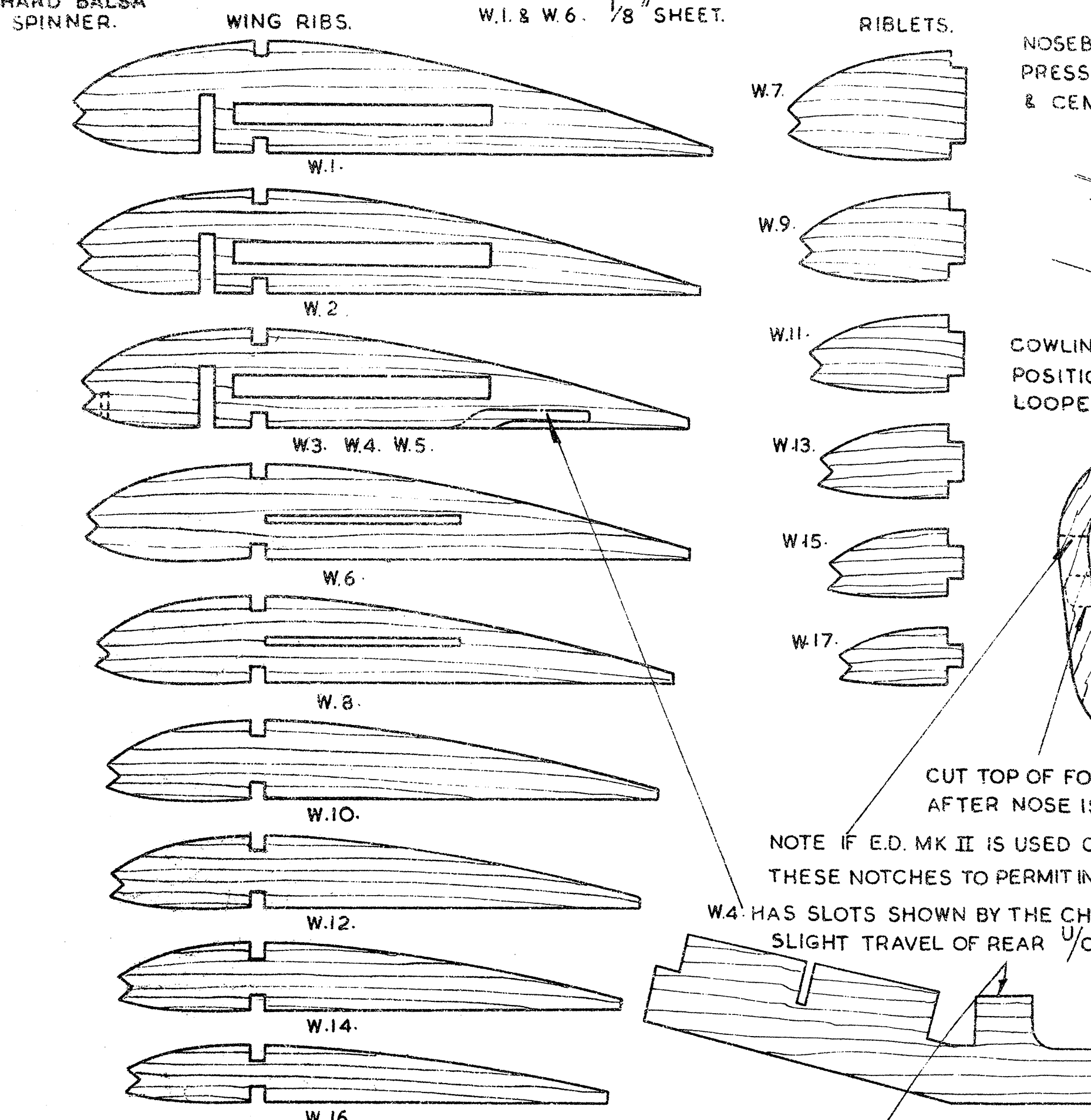
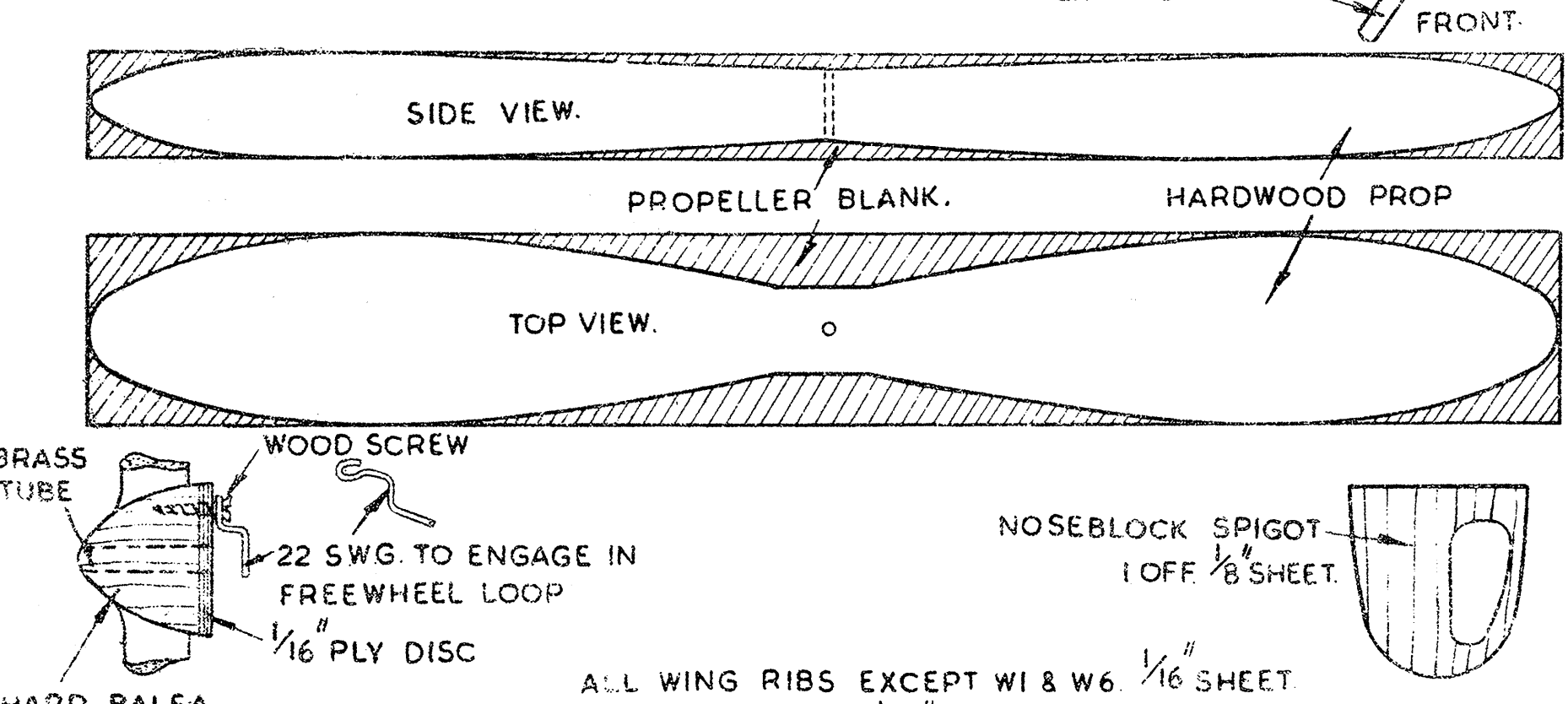
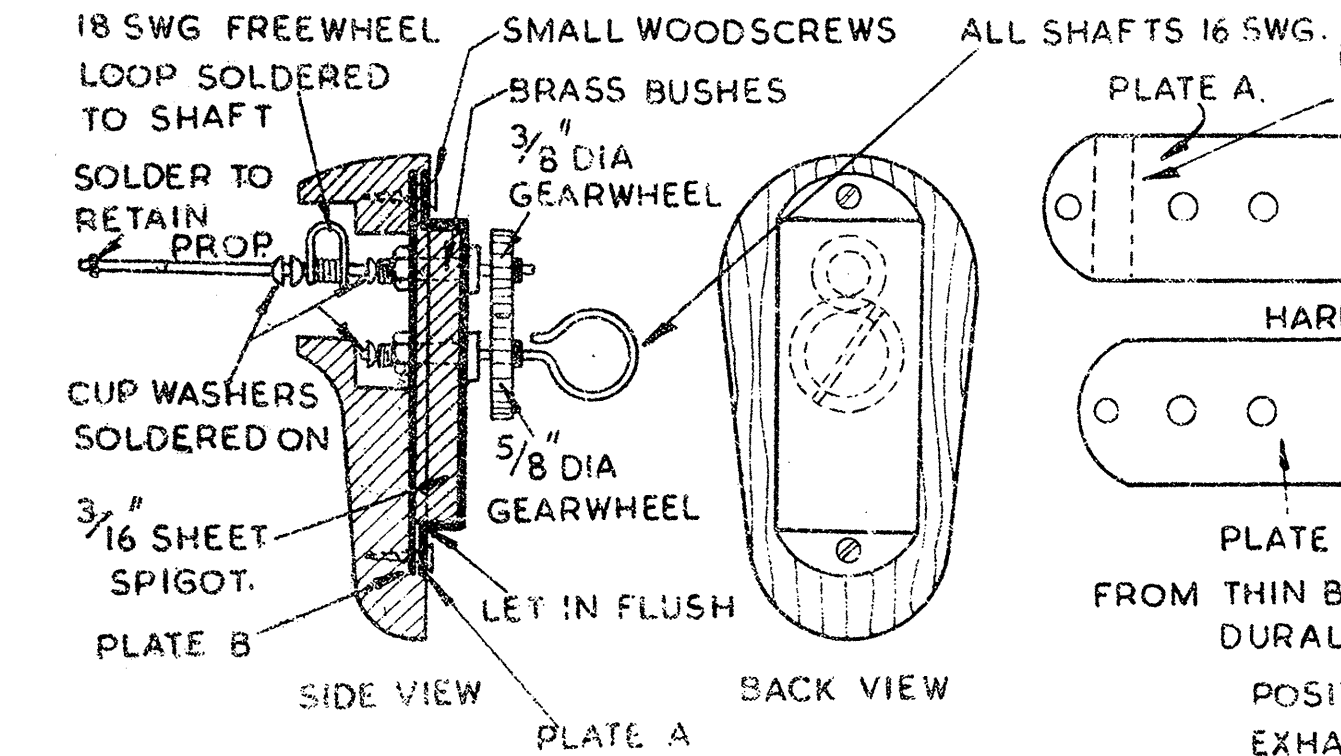
(1 INCH TO A FOOT)

DRAWN BY  
**H. J. PRIDMORE**

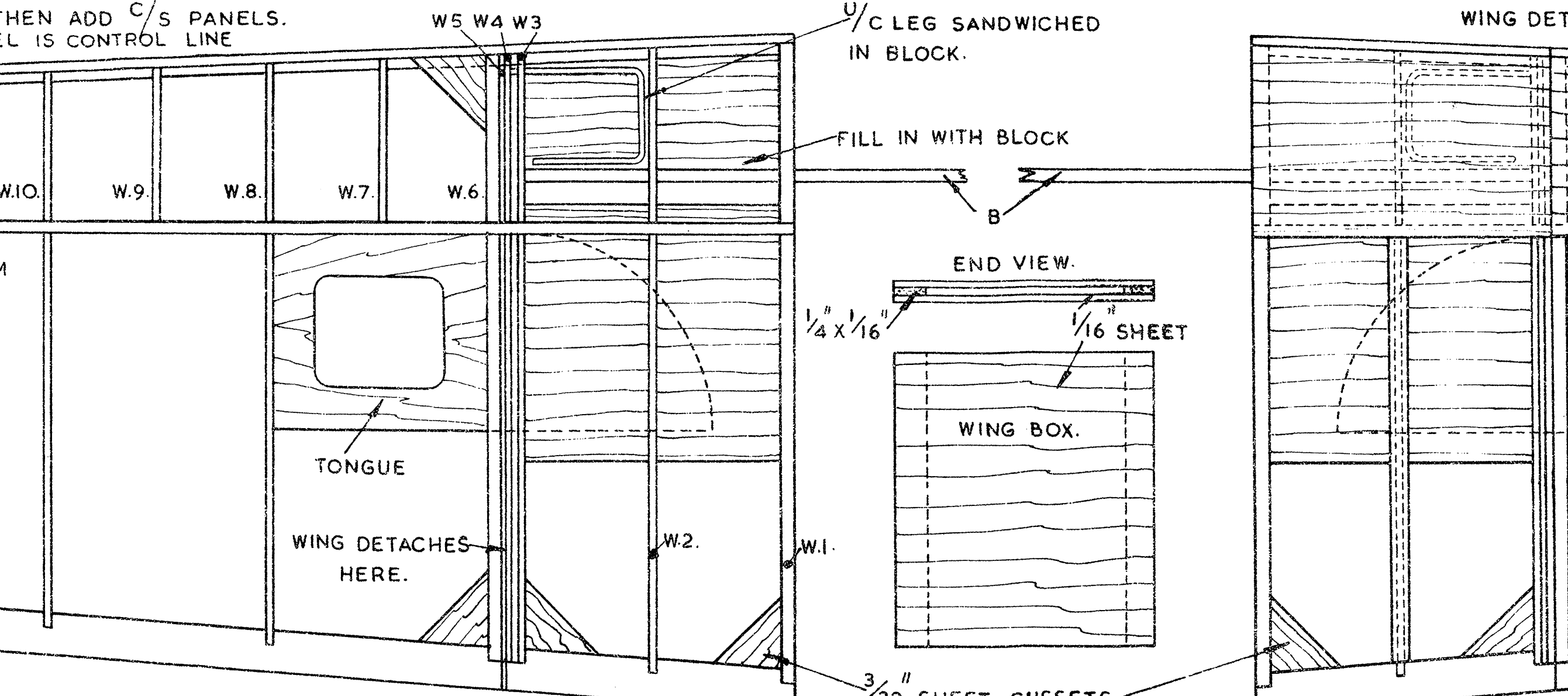
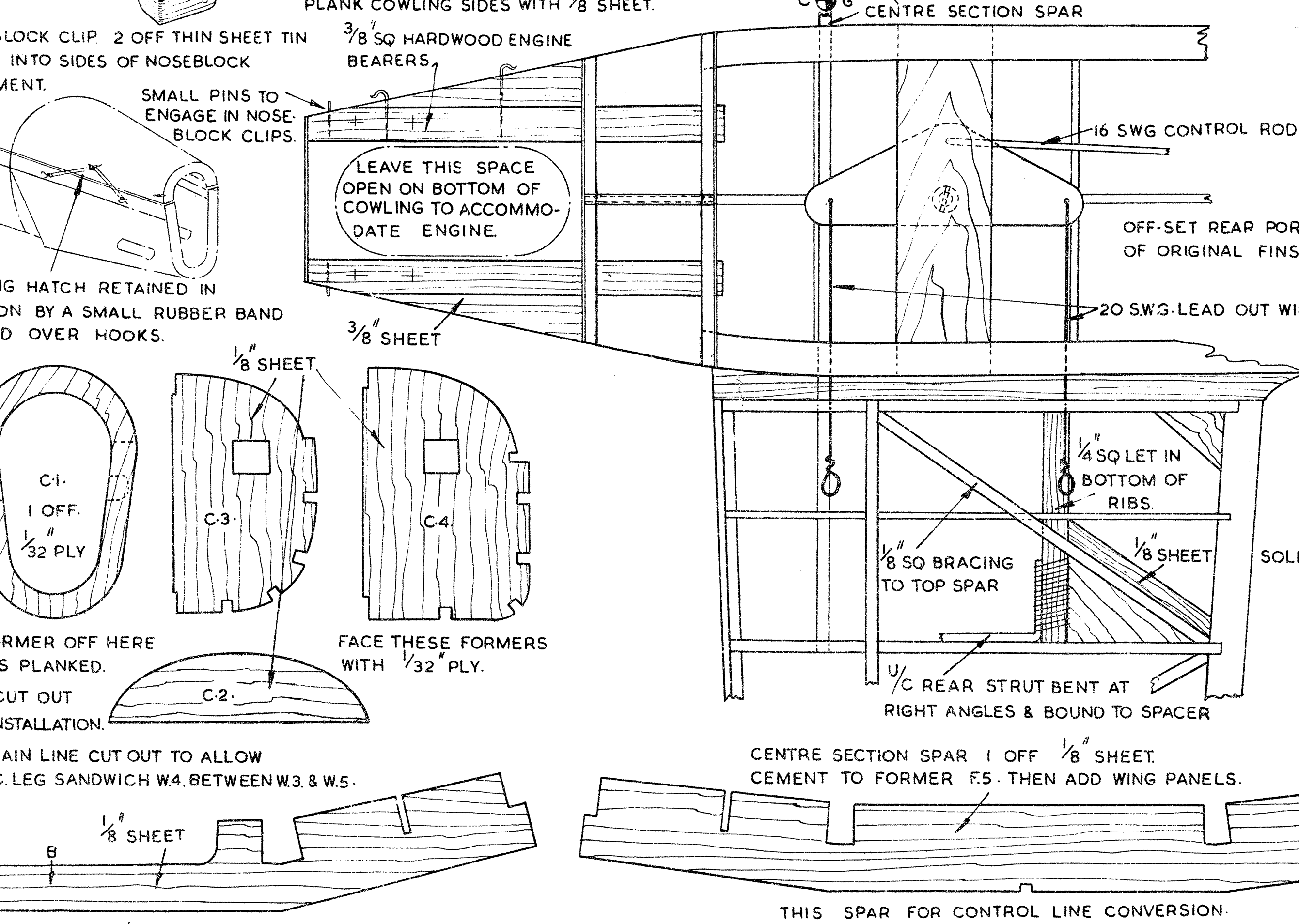
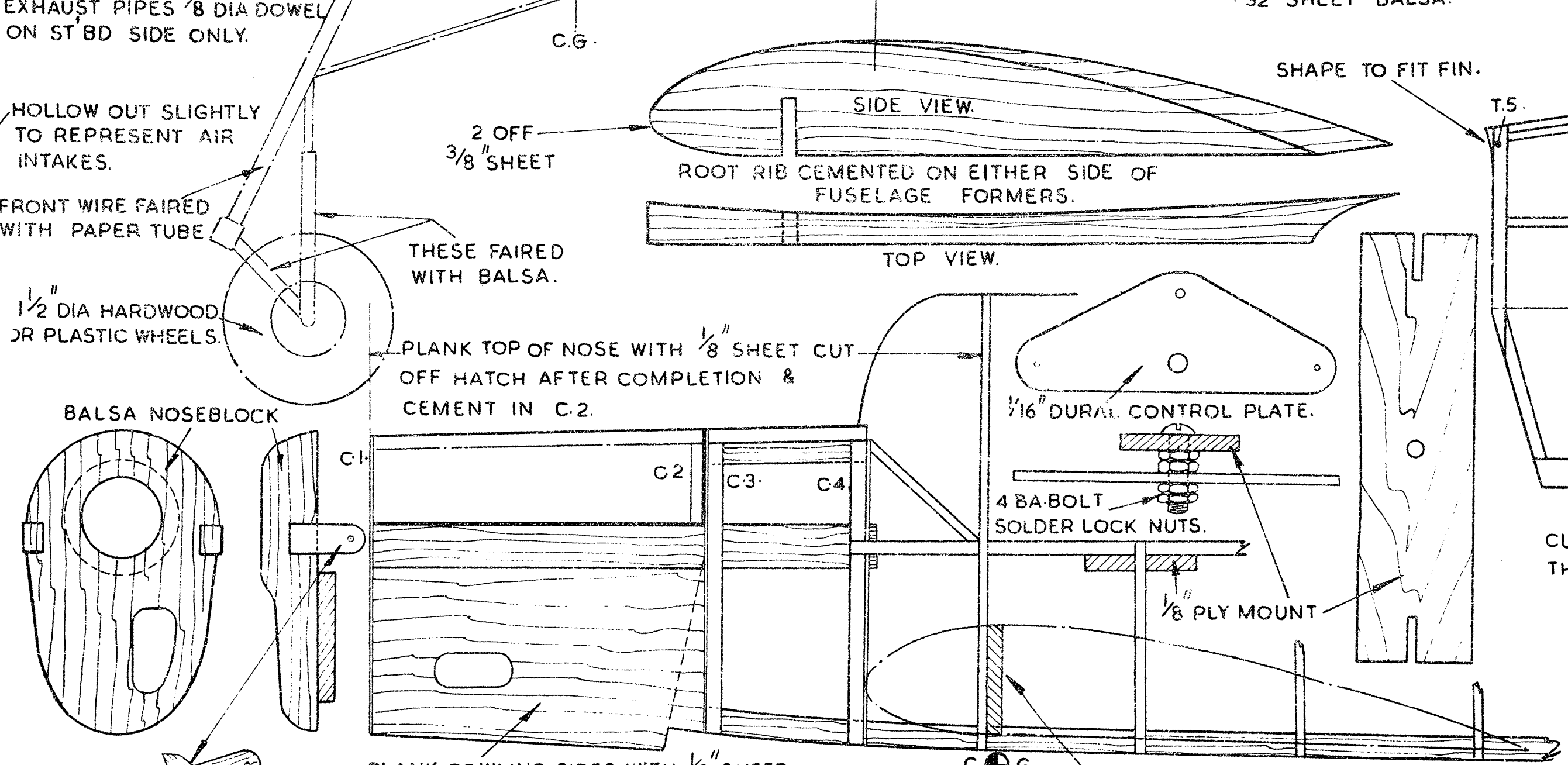
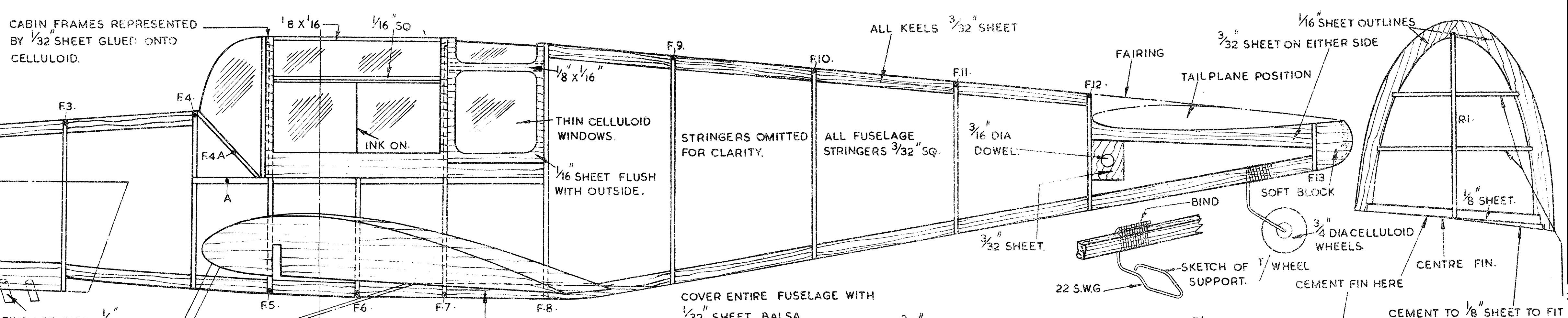
COPYRIGHT OF  
**THE AEROMODELLER PLANS SERVICE**

38, CLARENDON ROAD, WATFORD, HERTS.

ALL WOODS ARE BALSA UNLESS OTHERWISE STATED.

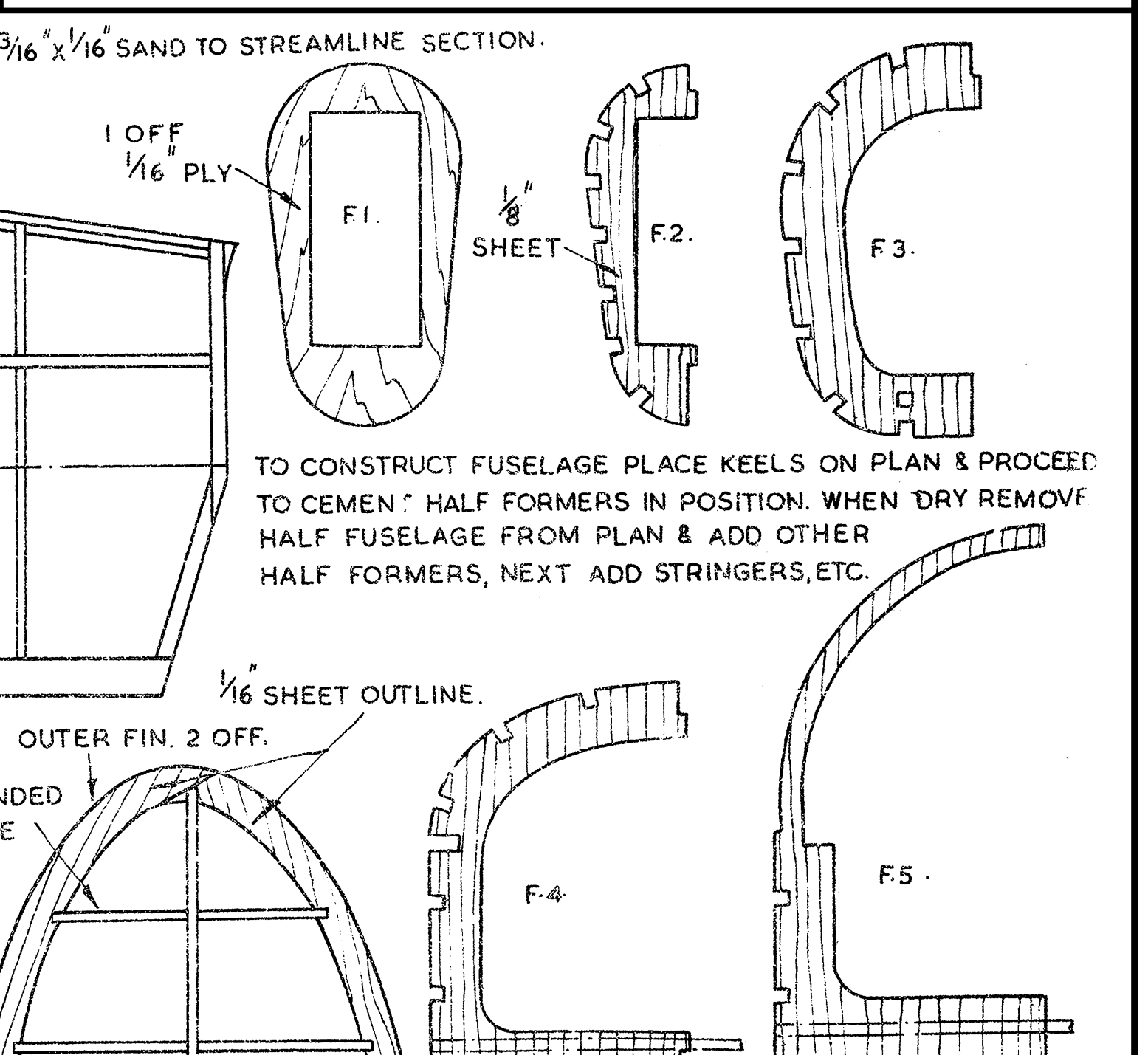


WING CONSTRUCTION. BUILD EACH PANEL SEPARATE. BUILD UP THE CENTRE SECTION PORTIONS WITH EACH WING PANEL & WHEN DRY BETWEEN W.4 & W.6.

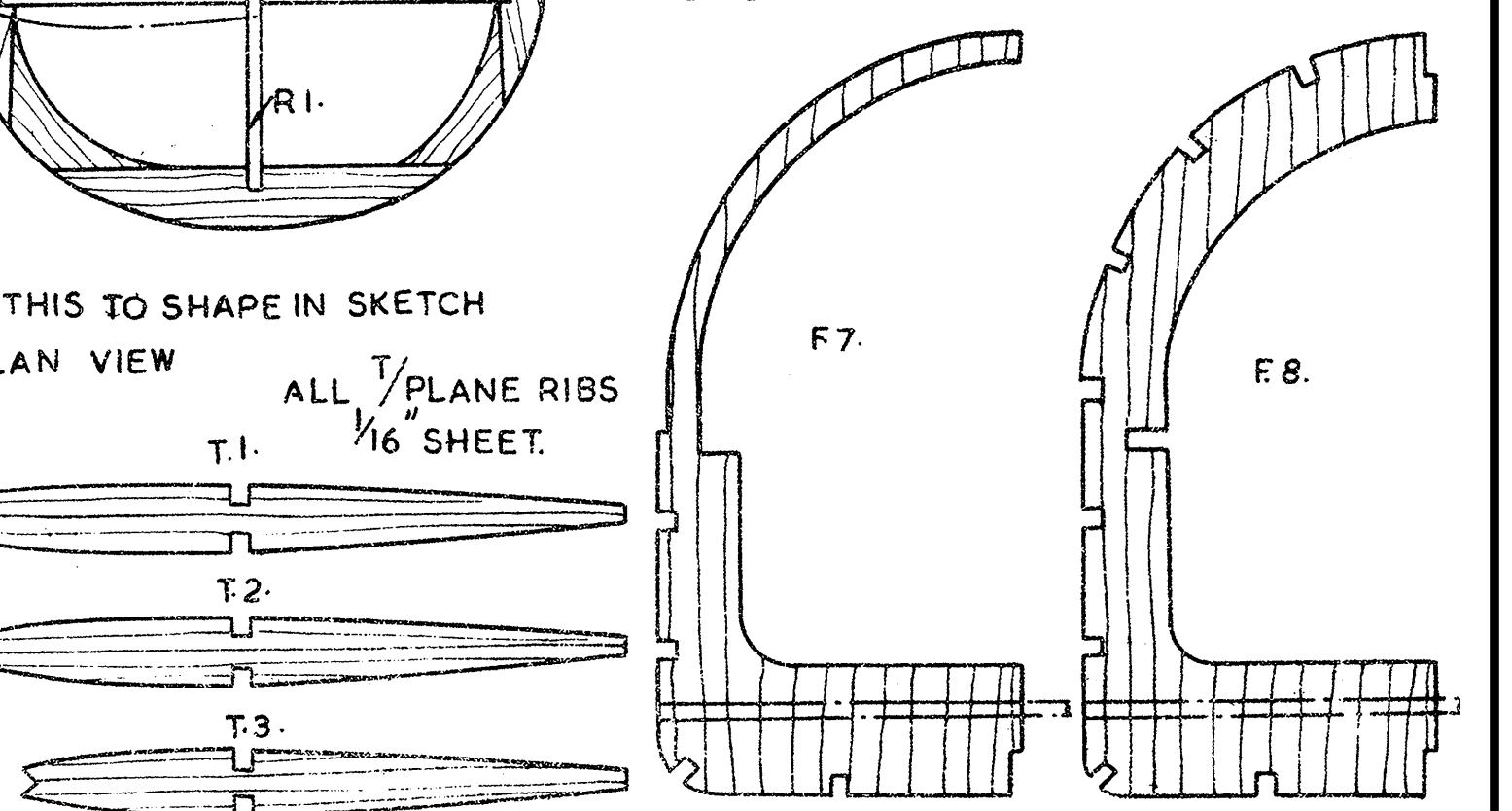


COVERING & DOPING. COVER ALL SURFACES WITH TISSUE & WATER SHRINK. GIVE 2 COATS OF CLEAR DOPE & 1 COAT OF LIGHT CREAMY YELLOW ON ALL SURFACES.

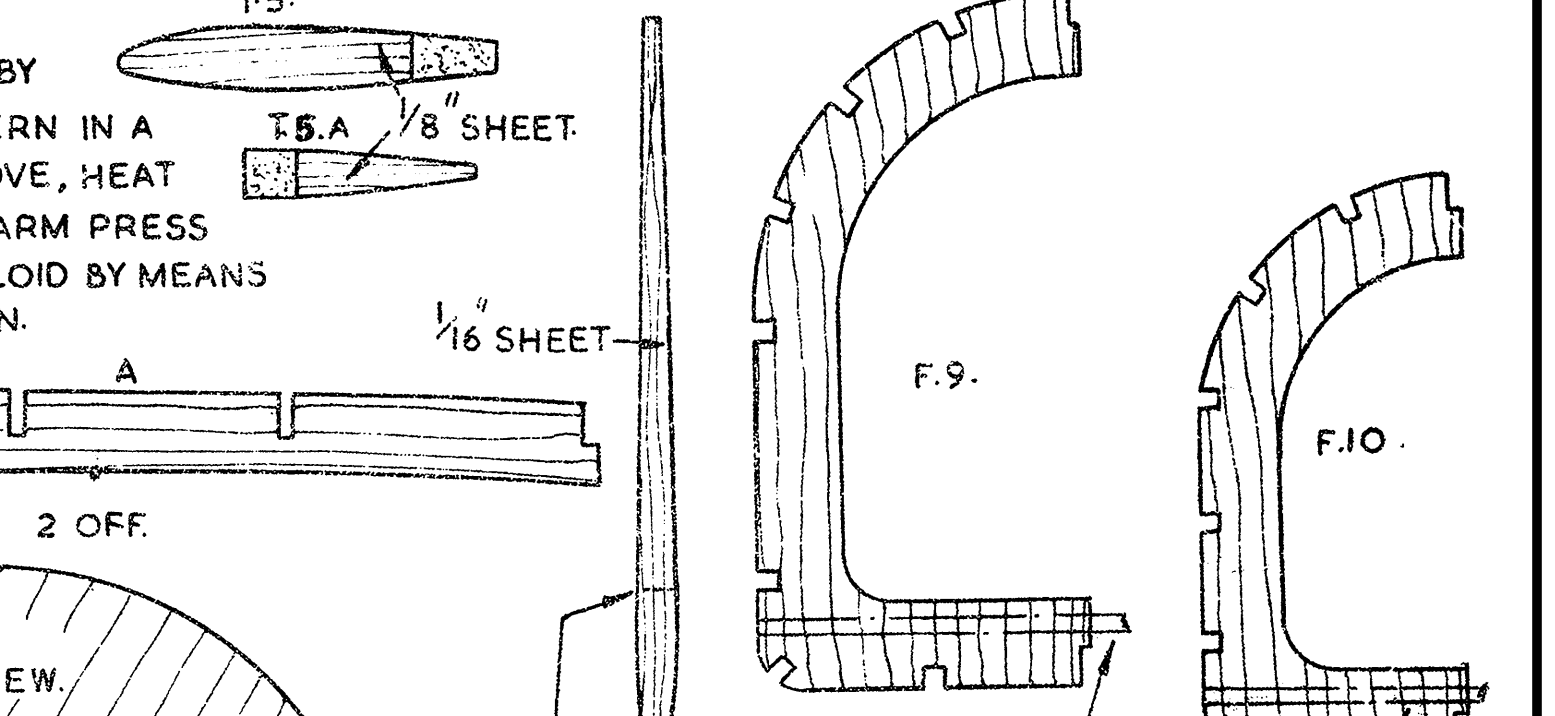
MATERIALS REQUIRED.	
SHEET	BLOCK
1 SHEET OF 1/4 X 3 X 4" BALSA	1 HARDWOOD BLOCK 2 1/2 X 1 1/2 X 3/4"
7 " " 1/32 X 3 X 24 "	1 " " 9 X 5/8 X 1/4 "
6 " " 1/16 X 3 X 36 "	1 BALSA " " 3 X 1 1/2 X 3/4 "
1 " " 3/32 X 3 X 36 "	MISCELLANEOUS.
1 " " 1/8 X 3 X 36 "	1 PR 1 1/2 DIA WHEELS
1 " " 3/8 X 1 1/2 X 14 "	1 " " 3/4 "
1 " " 1/16 X 4 X 8 " PLY	2 BRASS BUSHES
STRIP	21 OF 16 G. WIRE. ONE 3/8 DIA GEARWHEEL
16 STRIPS OF 3/32 X 24 " BALSA	4 " " 18 " " 6 CUP WASHERS.
3 " " 1/8 X 1/8 X 36 "	3 WOODSCREWS THIN SHEET BRASS 5 X 1
EXTRA MATERIALS FOR CONTROL LINE VERSION.	
1/16 DURAL CONTROL PLATE	18 OF 14 SWG PIANO WIRE.
24 OF 1/8 X 3 " BALSA	12 " " 20 "
6 X 3 OF 1/32 PLY	14 OF 1/4 X 1 1/2 BALSA.
2 HARDWOOD STRIPS 3/8 SQ X 4 1/2 "	36 " " 1/32 X 3 "
8 OF 22 SWG PIANO WIRE	4 X 1 " " 1/8 PLY



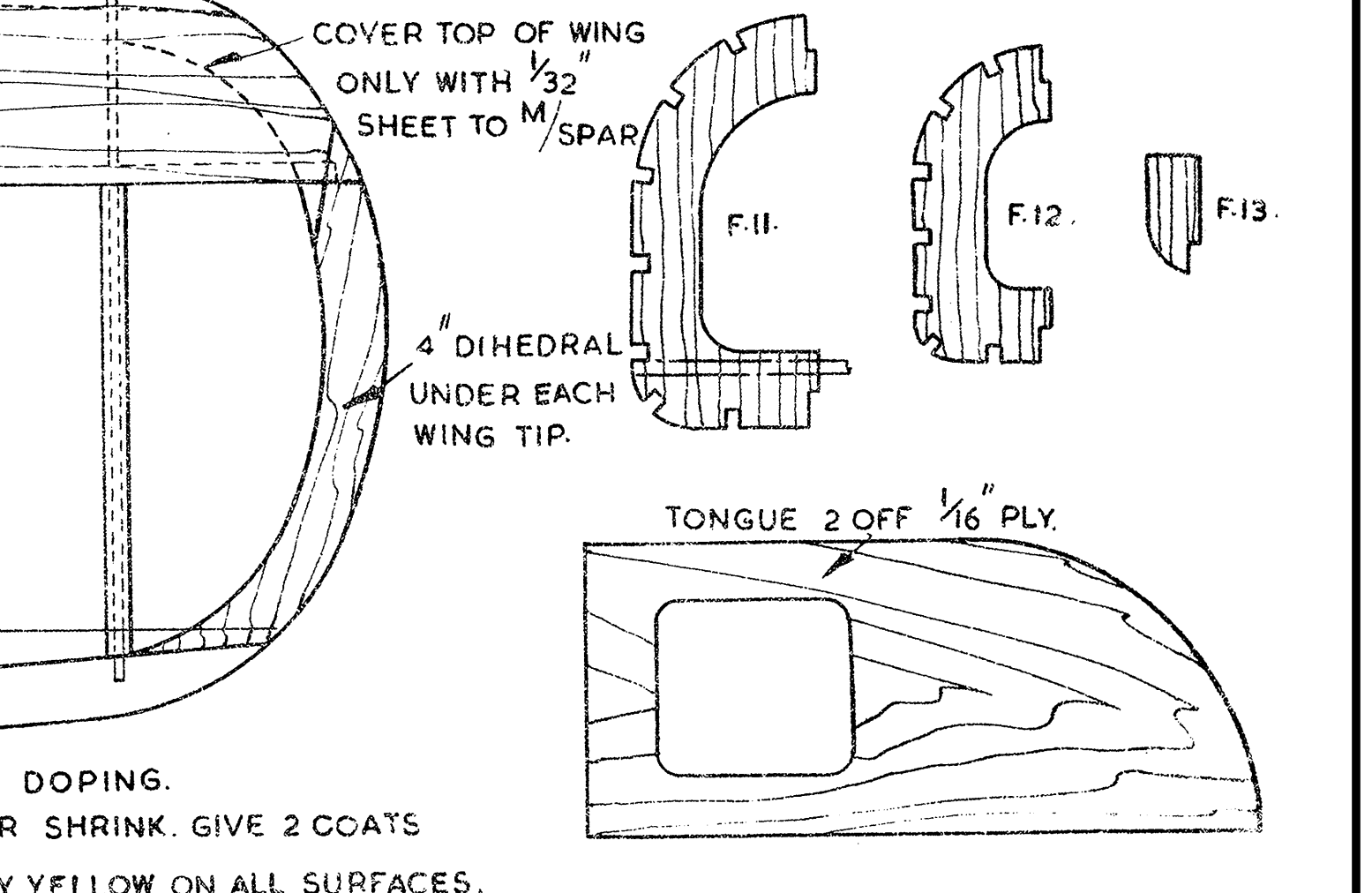
TO CONSTRUCT FUSELAGE PLACE KEELS ON PLAN & PROCEED TO CEMENT HALF FORMERS IN POSITION. WHEN DRY REMOVE HALF FUSELAGE FROM PLAN & ADD OTHER HALF FORMERS, NEXT ADD STRINGERS, ETC.



NOTE: WHEN ATTACHING THE CELLULOID TO FRAMEWORK USE GLUE & NOT CEMENT.



CUT HERE FOR CENTRE FIN. ADD STRIPS OF 3/32 SQ TO STRENGTHEN FORMERS.



COVERING & DOPING. COVER ALL SURFACES WITH TISSUE & WATER SHRINK. GIVE 2 COATS OF CLEAR DOPE & 1 COAT OF LIGHT CREAMY YELLOW ON ALL SURFACES.