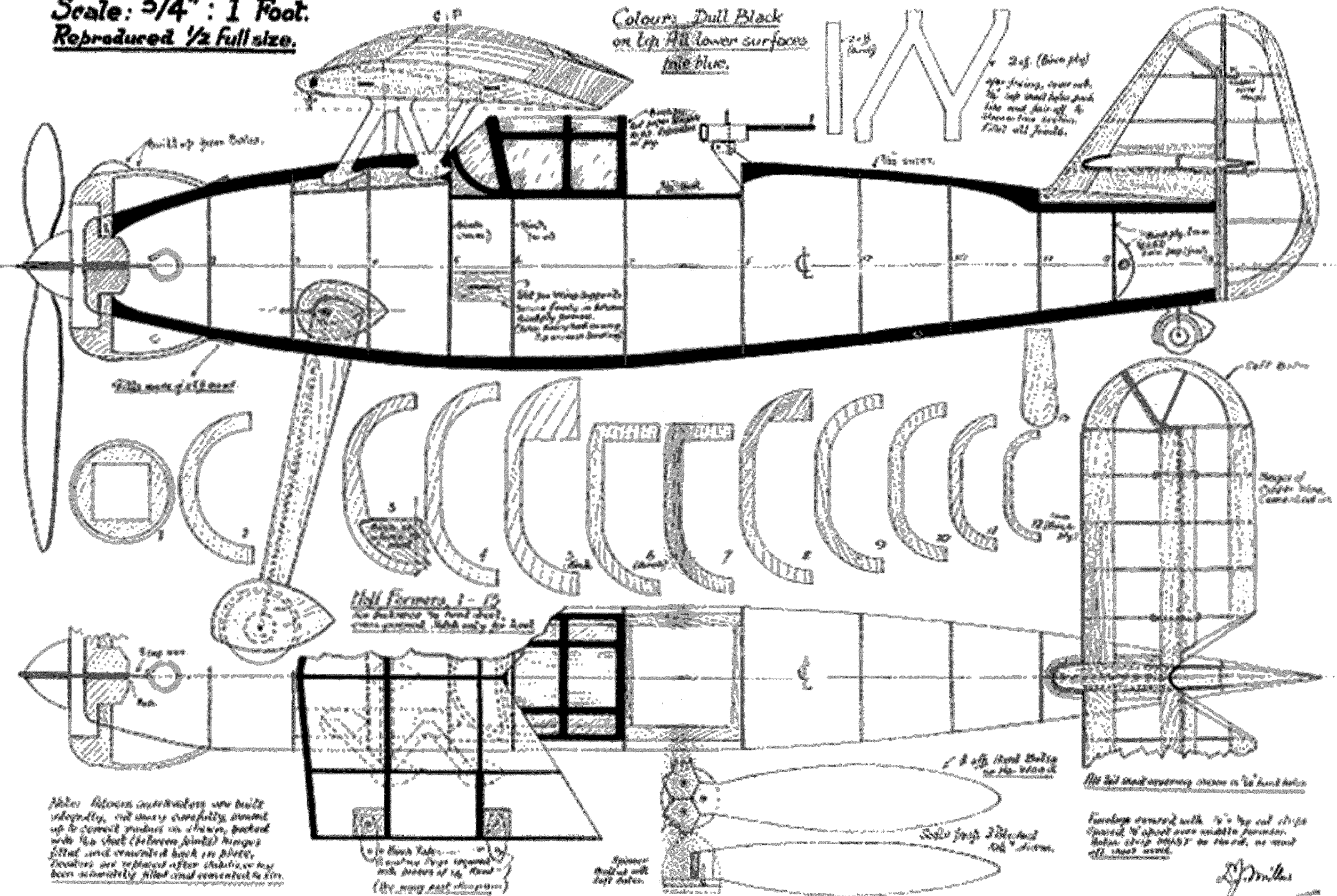


FLYING SCALE MODEL OF THE HENSCHEL Hs. 126.

Scale: 3/4" : 1 Foot.
 Reproduced 1/2 full size.

Colour: Dull Black
 on top. All lower surfaces
 fine blue.



Fuselage sections are built separately, cut away carefully around up to correct points as shown, packed with the sheet (between joints) hinges fitted and cemented back in place. Sections are replaced after stabilizer has been satisfactorily fitted and cemented to fuselage.

1/2 inch tabs...
 Landing gear square with pieces of 1/2 inch wood (the wing part slanted)

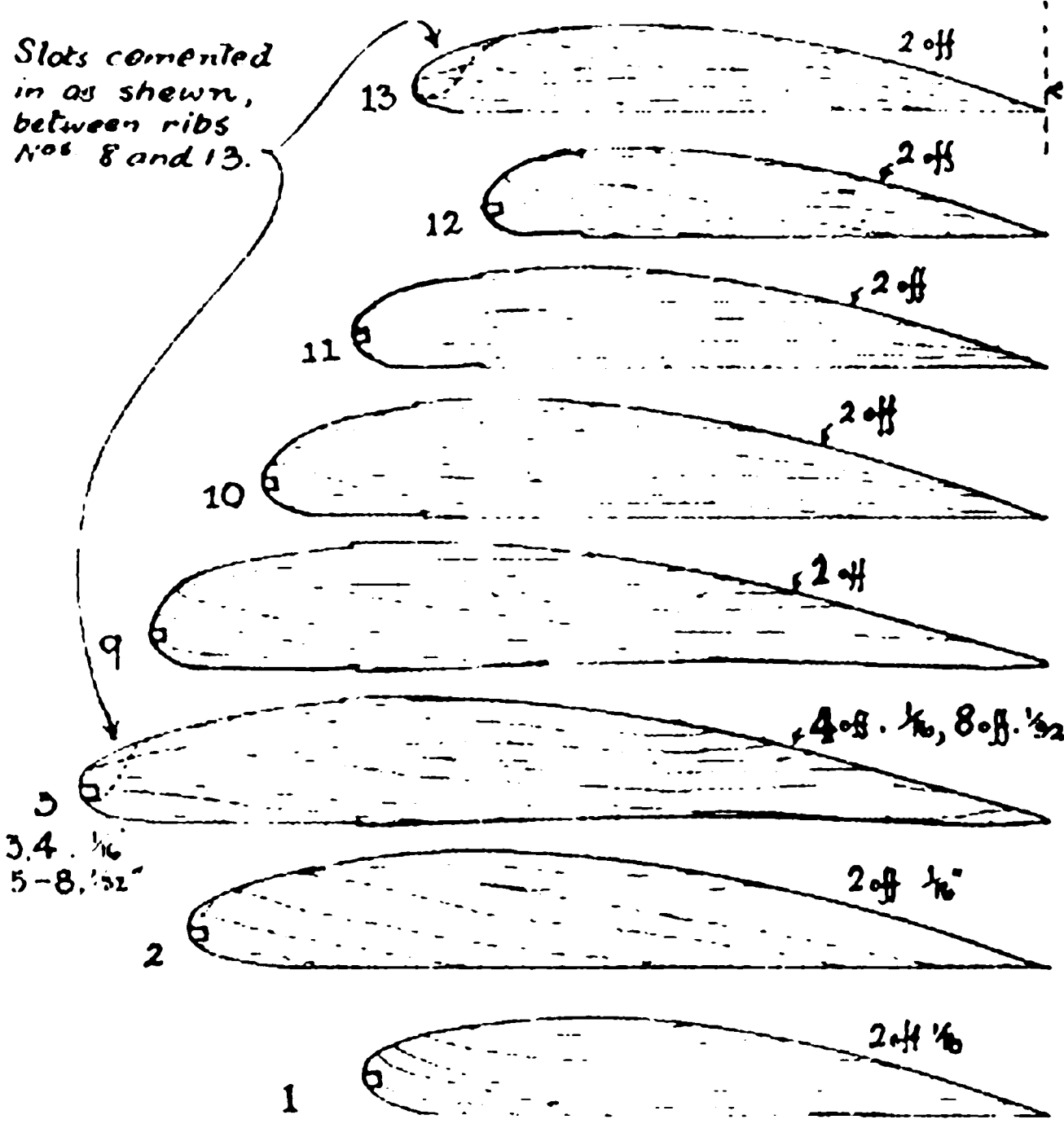
Spinner built with soft balsa.

1/2 off inch bolts for the wheels
 Sails just 3 blocks of wood

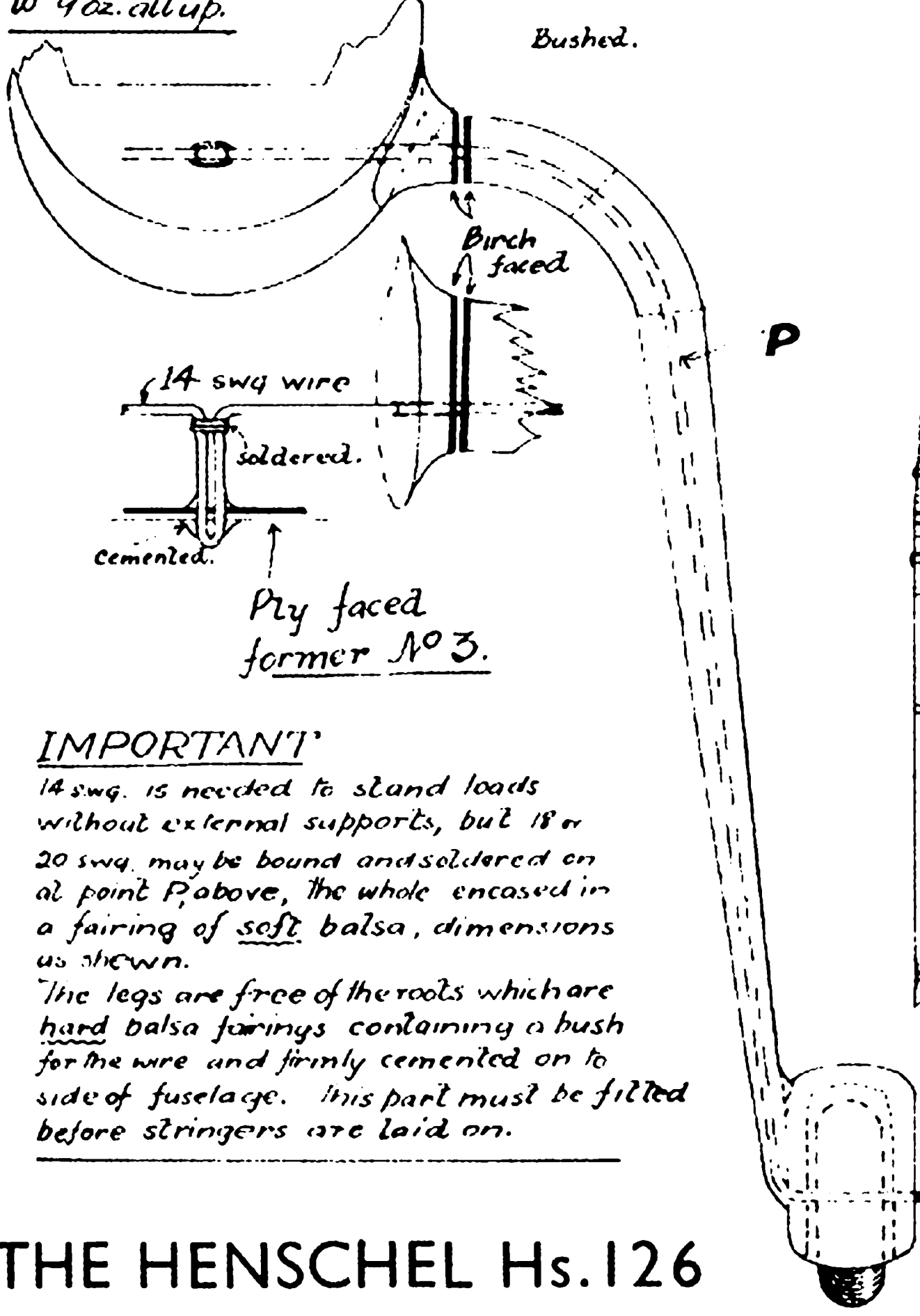
Fuselage covered with 1/2" by 1/2" red strips spaced 1/4" apart over middle portion. Below strip MUST be fixed, no wood left must show.

J. Miller

Slots cemented in as shown, between ribs Nos 8 and 13.



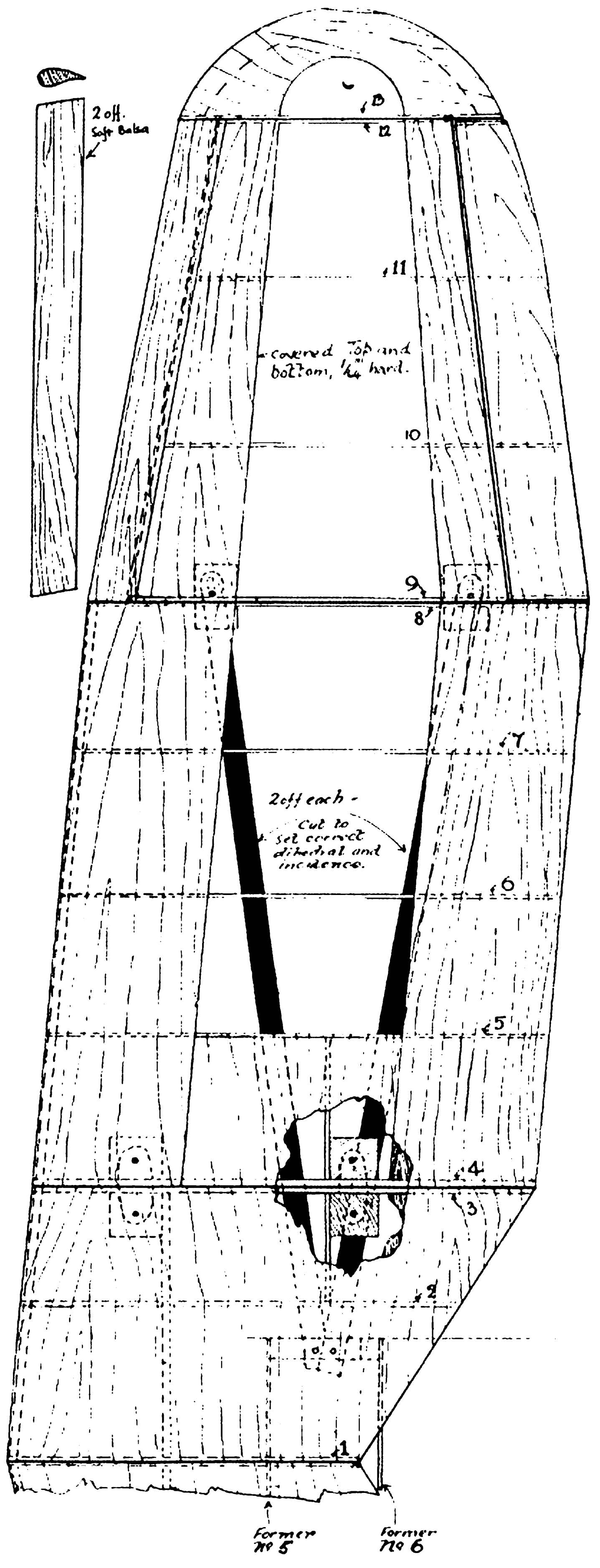
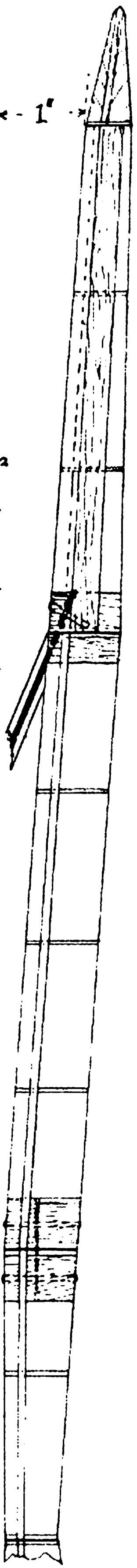
Size of Motor and pitch of propeller depend on finished weight without motor. Heavily doped and fully detailed, model weighed 7 1/2 oz and took 30z Rubber: 16 strands 1/4 x 1/32, 36" long. Rudder, aileron, downthrust and side thrust were necessary for 35-40 second flights. Carefully made, using light shrinking dope only much longer flights can be obtained. Wing area is approx. 145 sq. ins. and model can be built down to 9 oz. all up.



IMPORTANT

14 swg. is needed to stand loads without external supports, but 18 or 20 swg. may be bound and soldered on at point P above, the whole encased in a fairing of soft balsa, dimensions as shown. The legs are free of the roots which are hard balsa fairings containing a bush for the wire and firmly cemented on to side of fuselage. This part must be filled before stringers are laid on.

THE HENSCHEL Hs.126



Wing centre section covered beneath 1/32 hard sheet; on top, 1/16 hard. Wing covered as shown with 1/64 hard sheet. Wing support struts made of 1m.m. Birch Ply sandwiched between 1/16 balsa, faired and cut to exact proportions.