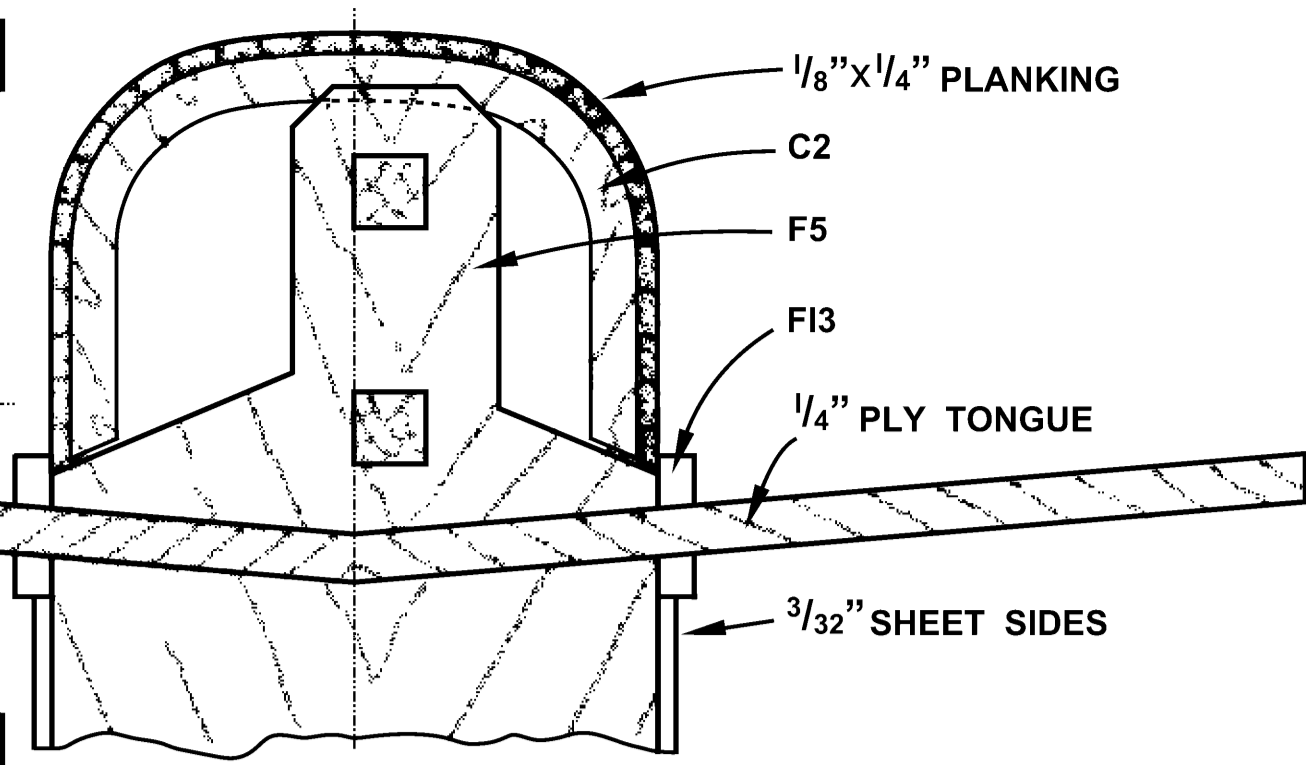


CHERPAA

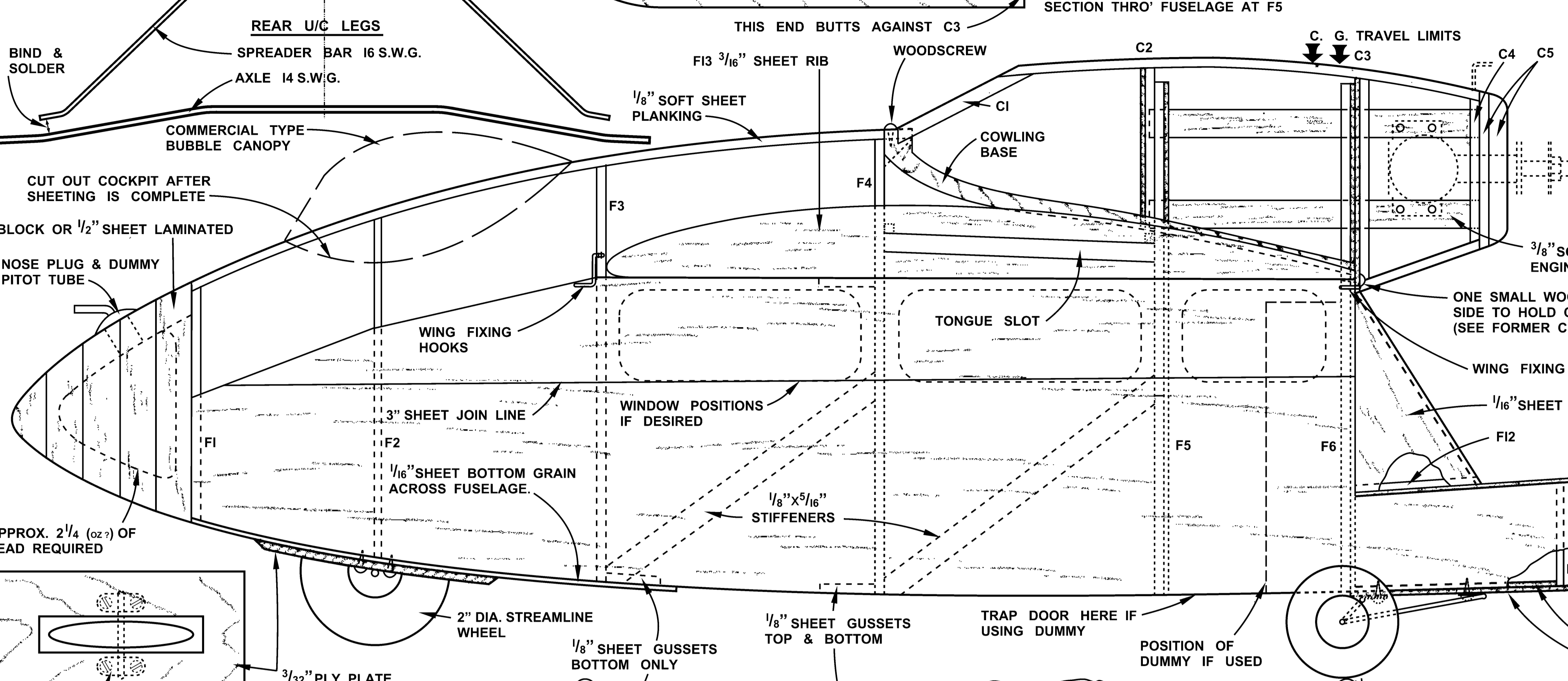
DESIGNED BY
S/ldr. L. Ellis, D.F.C.
COPYRIGHT OF
6/6
THE AEROMODELLER PLANS SERVICE
38, CLARENDON RD., WATFORD, HERTS.

ALL WOODS ARE BALSA UNLESS OTHERWISE STATED

1MM COWLING BASE THIS BASE IS VERY PLIABLE & IS PINNED IN POSITION WHILE COWLING IS BUILT UP. COWL FORMERS & SHEETING IS CEMENTED TO BASE. WHOLE ASSEMBLY IS SECURED TO FUSELAGE WITH WOODSCREW AT FRONT & AT C3.



MATERIALS REQUIRED			
4 STRIPS OF	1/16" x 1/4" x 36" BALSA	7" x 4" OF	1MM PLY
9	1/16" x 3/16" x 36"	2 1/2" x 3/16" -	3/32" PLY
1 STRIP	1/4" x 3/16" x 36"	10 1/2" x 3/16" -	1/16" PLY
1	1/4" x 1" x 36" T.E.	9" OF	3/16" SQ. HARDWOOD
2 STRIPS	1/16" x 1/2" x 36" BALSA	20" OF	20 S.W.G. WIRE
3 SHEETS	1/16" x 3" x 36"	12" -	16 "
5	3/32" x 3" x 36"	12" -	14 "
3	1/16" x 3" x 36"	1	STREAMLINE WHEEL 2" DIA.
1 SHEET	3/16" x 3" x 36"	2	SORBO WHEELS 1 1/2" DIA.
1 PIECE	1/4" x 3" x 36"	11	SMALL WOODSCREWS
1 BALSA BLOCK	2 1/2" x 3 3/8" x 2 1/4"	1-10 B.A. & 2-8 B.A. BOLTS	
1/2 SQ. FT. OF	1/16" PLY	SHIM BRASS & TINPLATE	

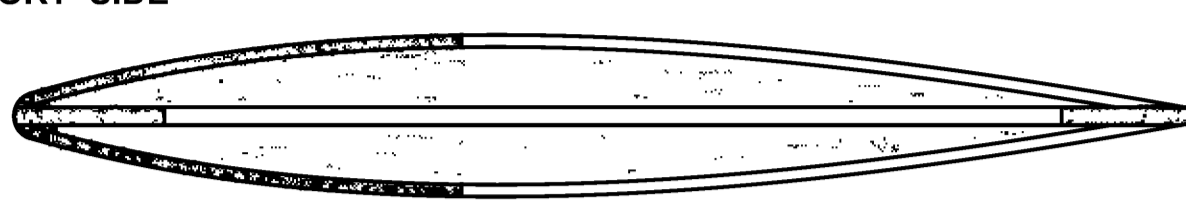


NOTE ENGINE HEAD ON PORT SIDE

FIN CONSTRUCTION DETAIL

1. PIN DOWN 3/32" SHEET CENTRE PARTS
2. CEMENT ON HALF RIBS
3. SHEET L.E. WITH 1/16" SHEET
4. CEMENT ON CAPSTRIPS
5. REMOVE FROM PLAN & REPEAT FOR OTHER SIDE

FIN OUTLINE FROM 3/32" SHEET



1/16" SHEET EACH SIDE

1/16" SQ. EACH SIDE OF R1 & R2

1/16" SHEET TRIM TAB

1/4" SHEET

TRIM TAB ADJUSTMENT (SEE SKETCH)

SHIM BRASS HINGES & PINS

3/32" SHEET

1/16" SHEET CAP STRIPS

3/32" SHEET

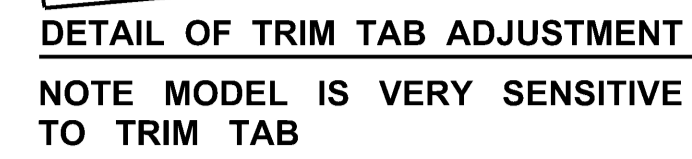
10 B.A. BOLT (SCREW FIT)

RUBBER BAND

TRIM TAB

HARDWOOD

FIN BODY



NOTE MODEL IS VERY SENSITIVE TO TRIM TAB

1/16" SQ. ON BOTTOM TO ASSIST SHEETING. (SEE SECTION A-A)

CEMENT TOGETHER 1/8" RIB & PLY RIB

W1

W2

W3

W4

W5

W6

W7

W8

W9

W10

W11

W12

W13

W14

W15

W16

W17

W18

W19

W20

W21

W22

W23

W24

W25

W26

W27

W28

W29

W30

W31

W32

W33

W34

W35

W36

W37

W38

W39

W40

W41

W42

W43

W44

W45

W46

W47

W48

W49

W50

W51

W52

W53

W54

W55

W56

W57

W58

W59

W60

W61

W62

W63

W64

W65

W66

W67

W68

W69

W70

W71

W72

W73

W74

W75

W76

W77

W78

W79

W80

W81

W82

W83

W84

W85

W86

W87

W88

W89

W90

W91

W92

W93

W94

W95

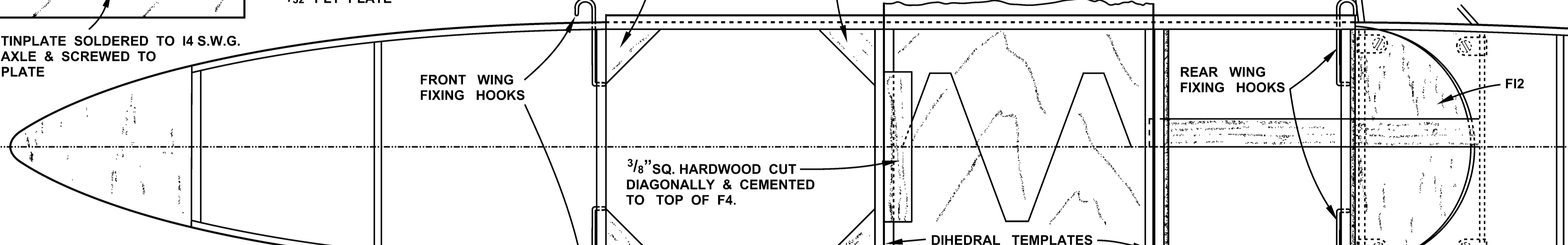
W96

W97

W98

W99

W100



NOTE ENGINE HEAD ON PORT SIDE

FIN CONSTRUCTION DETAIL

1. PIN DOWN 3/32" SHEET CENTRE PARTS

2. CEMENT ON HALF RIBS

3. SHEET L.E. WITH 1/16" SHEET

4. CEMENT ON CAPSTRIPS

5. REMOVE FROM PLAN & REPEAT FOR OTHER SIDE

FIN OUTLINE FROM 3/32" SHEET



1/16" SHEET EACH SIDE

1/16" SQ. EACH SIDE OF R1 & R2

1/16" SHEET TRIM TAB

1/4" SHEET

TRIM TAB ADJUSTMENT (SEE SKETCH)

SHIM BRASS HINGES & PINS

3/32" SHEET

1/16" SHEET CAP STRIPS

3/32" SHEET

10 B.A. BOLT (SCREW FIT)

RUBBER BAND

TRIM TAB

HARDWOOD

FIN BODY

1/16" SQ. LOWER SUB-SPAR

W1

W2

W3

W4

W5

W6

W7

W8

W9

W10

W11

W12

W13

W14

W15

W16

W17

W18

W19

W20

W21

W22

W23

W24

W25

W26

W27

W28

W29

W30

W31

W32

W33

W34

W35

W36

W37

W38

W39

W40

W41

W42

W43

W44

W45

W46

W47

W48

W49

W50

W51

W52

W53

W54

W55

W56

W57

W58

W59

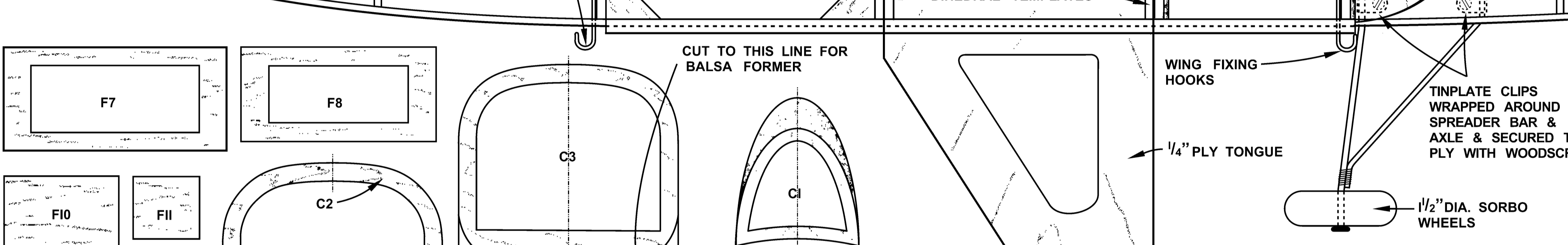
W60

W61

W62

W63

W64



NOTE ENGINE HEAD ON PORT SIDE

FIN CONSTRUCTION DETAIL

1. PIN DOWN 3/32" SHEET CENTRE PARTS

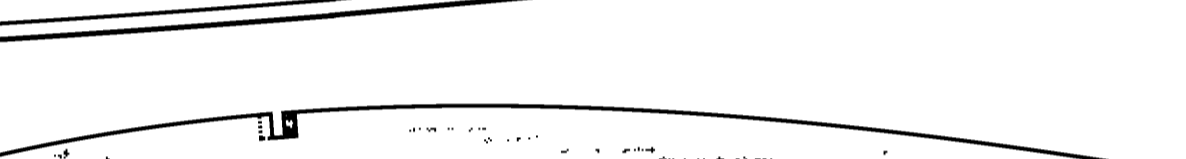
2. CEMENT ON HALF RIBS

3. SHEET L.E. WITH 1/16" SHEET

4. CEMENT ON CAPSTRIPS

5. REMOVE FROM PLAN & REPEAT FOR OTHER SIDE

FIN OUTLINE FROM 3/32" SHEET



1/16" SHEET EACH SIDE

1/16" SQ. EACH SIDE OF R1 & R2

1/16" SHEET TRIM TAB

1/4" SHEET

TRIM TAB ADJUSTMENT (SEE SKETCH)

SHIM BRASS HINGES & PINS

3/32" SHEET

1/16" SHEET CAP STRIPS

3/32" SHEET

10 B.A. BOLT (SCREW FIT)

RUBBER BAND

TRIM TAB

HARDWOOD

FIN BODY

1/16" SQ. LOWER SUB-SPAR

W1

W2

W3

W4

W5

W6

W7

W8

W9

W10

W11

W12

W13

W14

W15

W16

W17

W18

W19

W20

W21

W22

W23

W24

W25

W26

W27

W28

W29

W30

W31

W32

W33

W34

W35

W36

W37

W38

W39

W40

W41

W42

W43

W44

W45