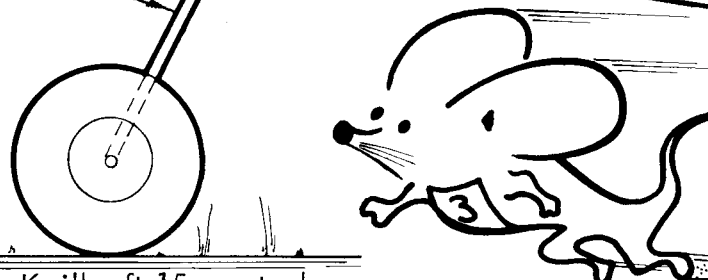


Drill fuselage for 16 s.w.g. leg before Epoxying wing (Groove wing for top of leg)

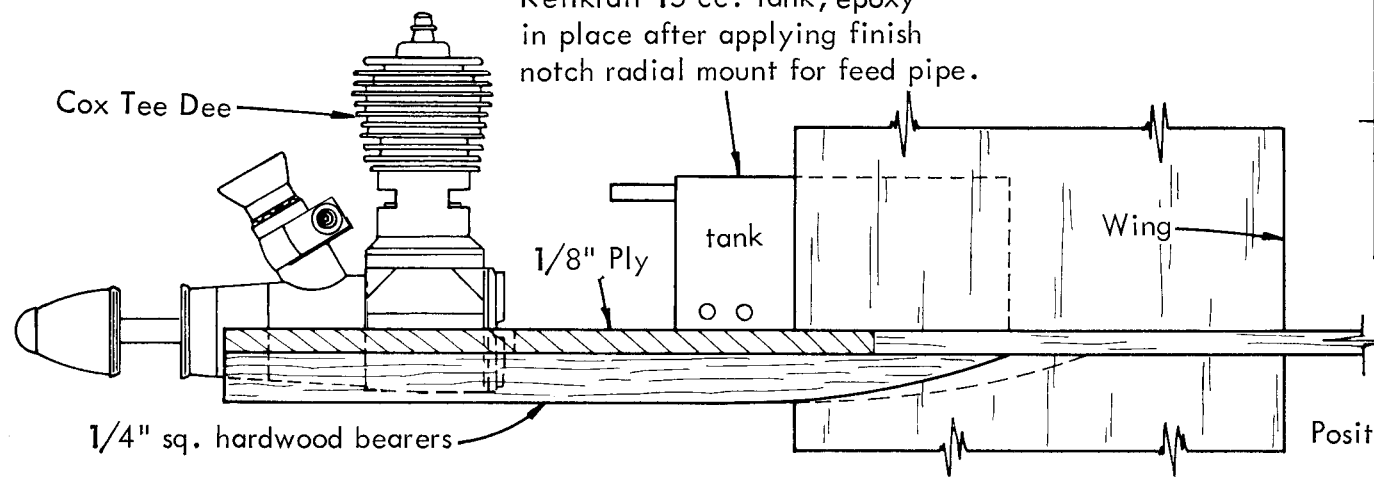
# Tom Jolley's BURP

049 (.8 cc.) MOUSE RACER



Locate pushrod parallel to fuselage and about 1/8" away from it. Washers not needed for retaining. This will locate Bellcrank pivot hole and horn.

Keilkraft 15 cc. tank, epoxy in place after applying finish notch radial mount for feed pipe.



Radial mount shown for Babe Bee or QZ.049. Adjust position for Golden Bee. B.B. or Q.Z. side mounted with needle valve on top. Drill tank wall for fuel line if using external tank as shown. Use suitable horn to achieve approx. 35° up and 5° down.

