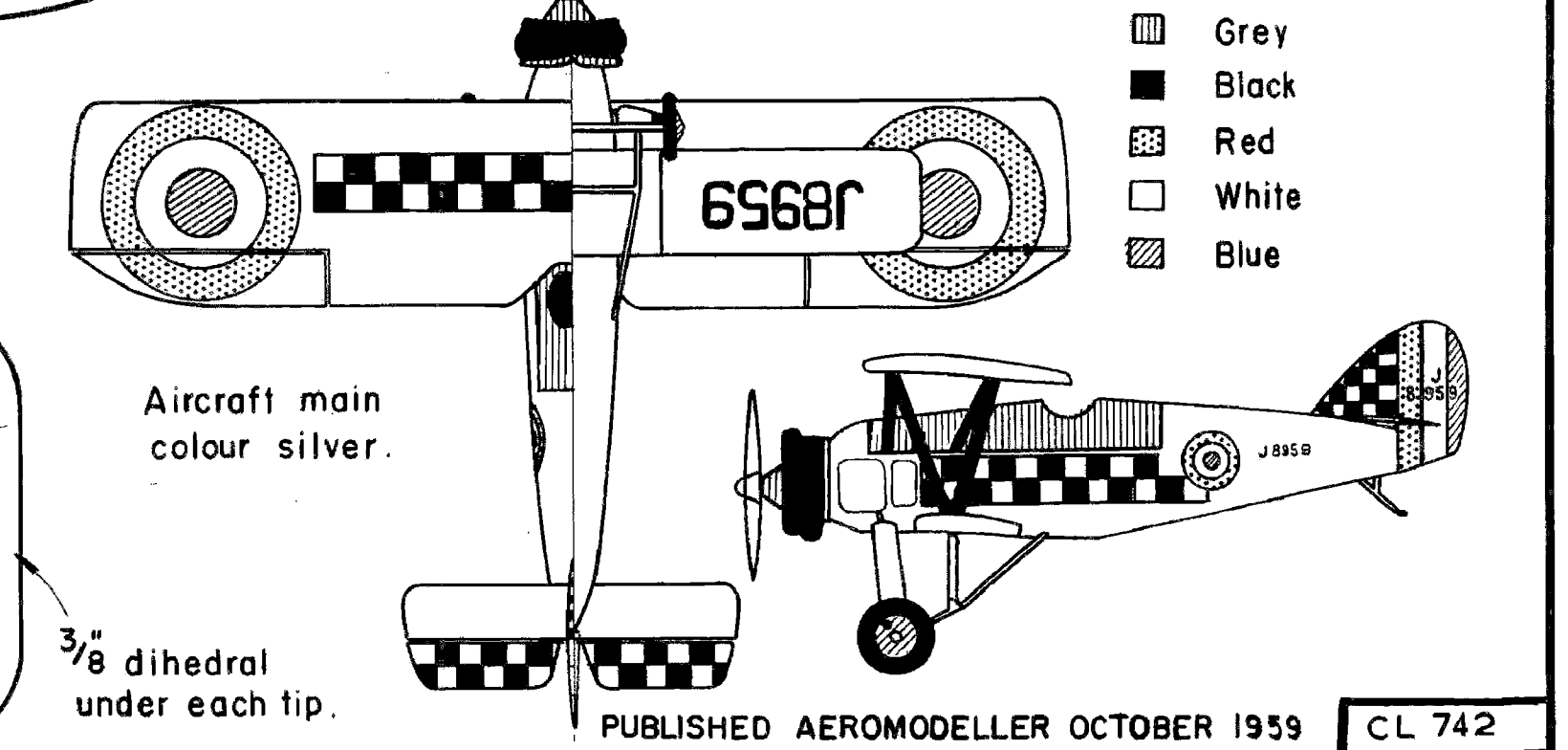
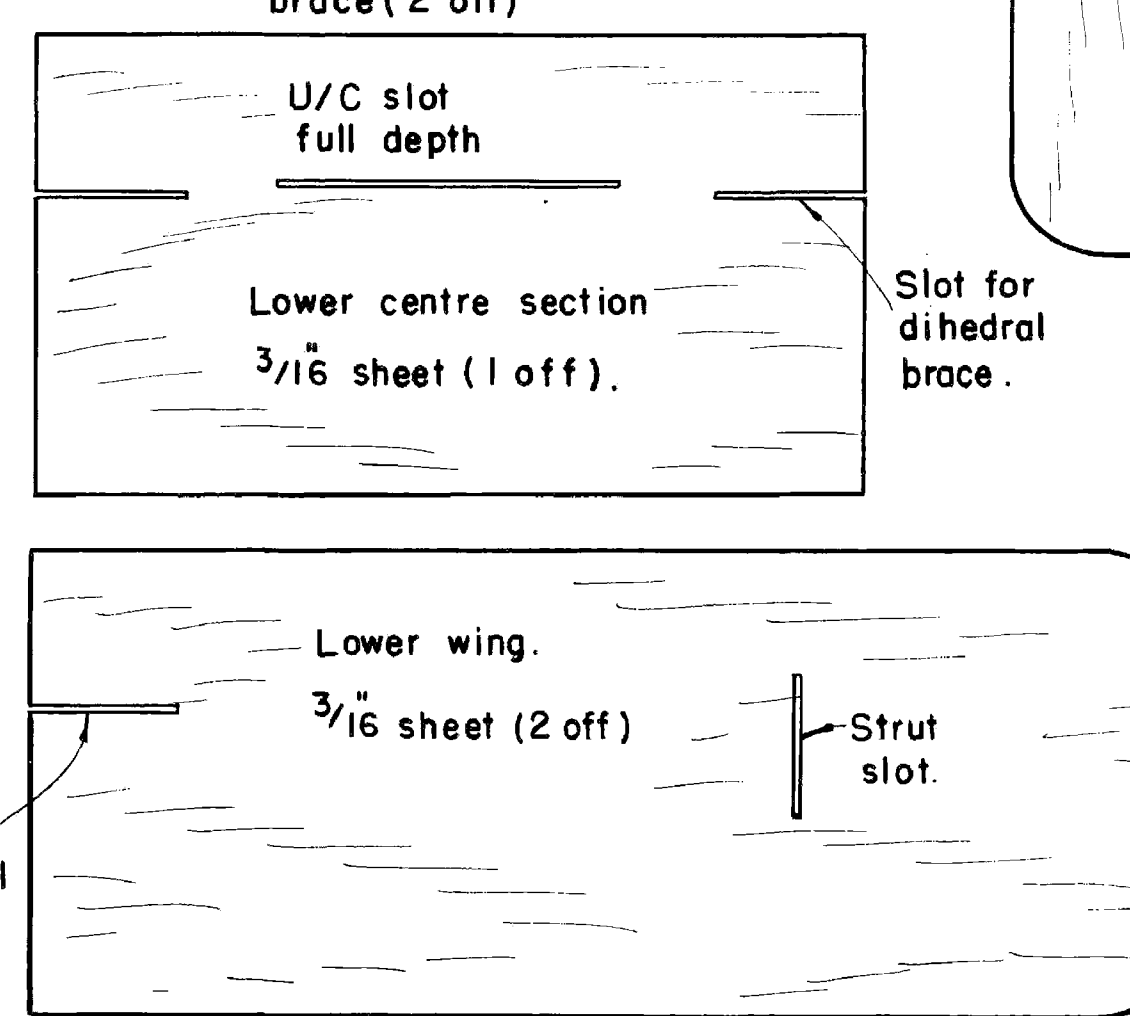
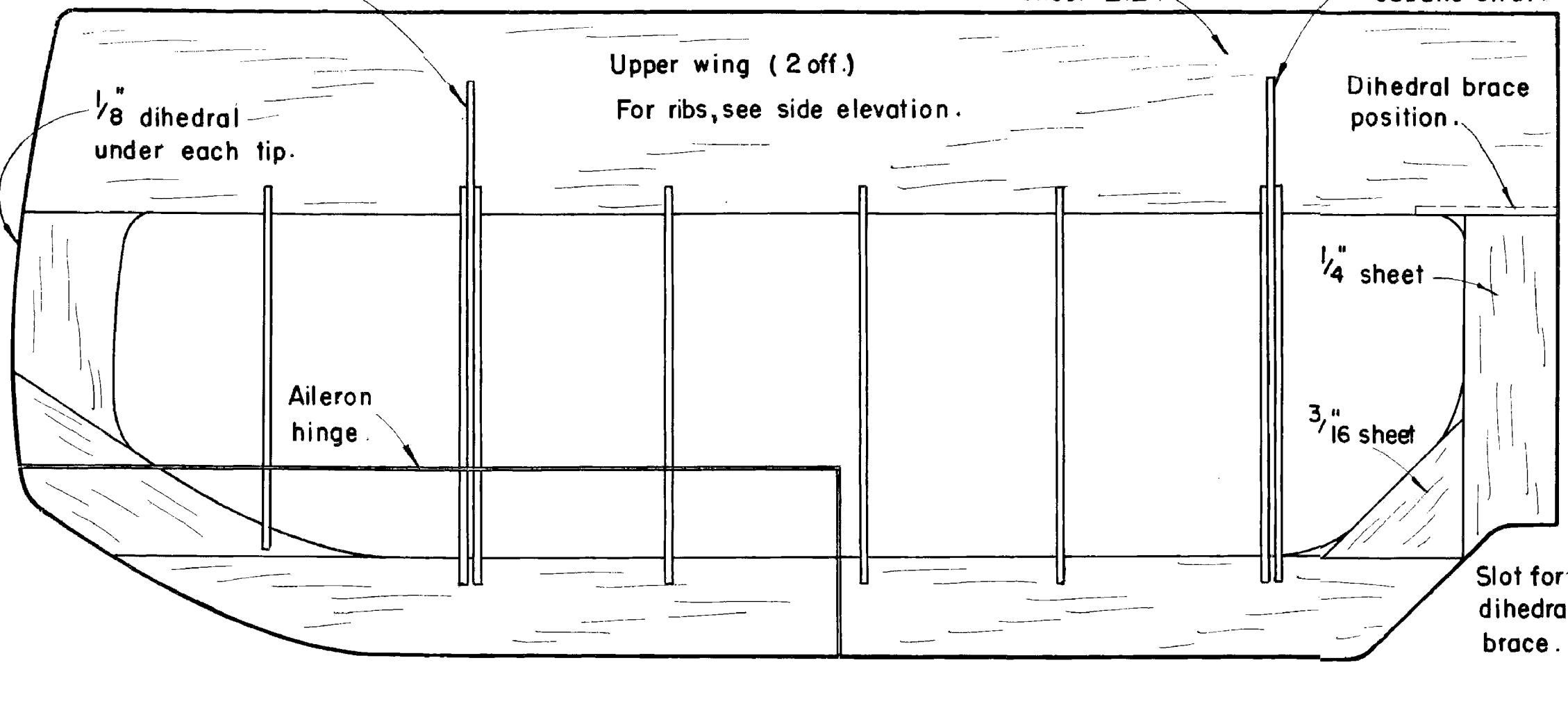
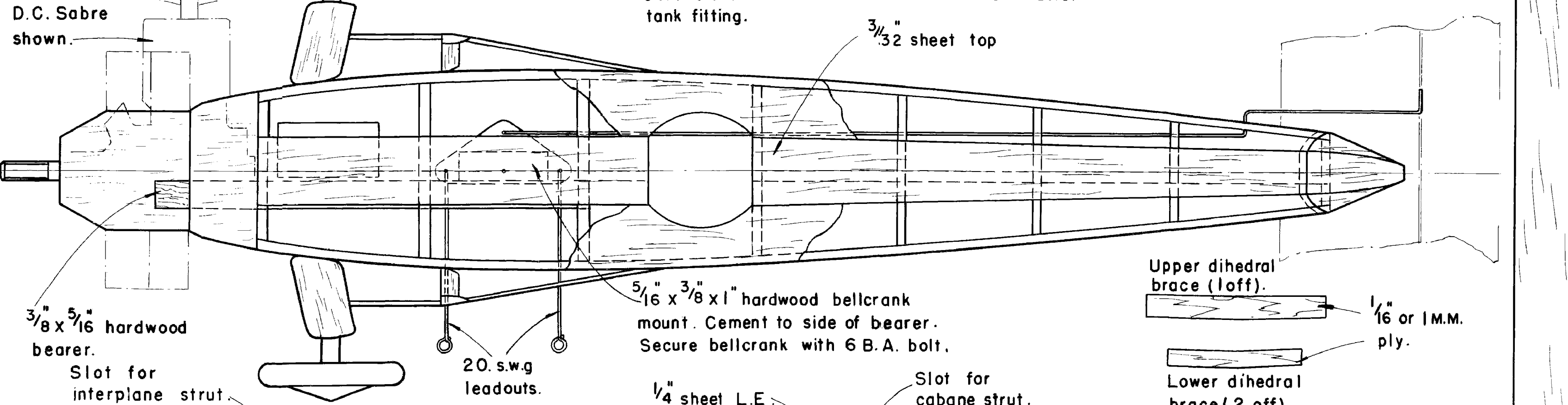
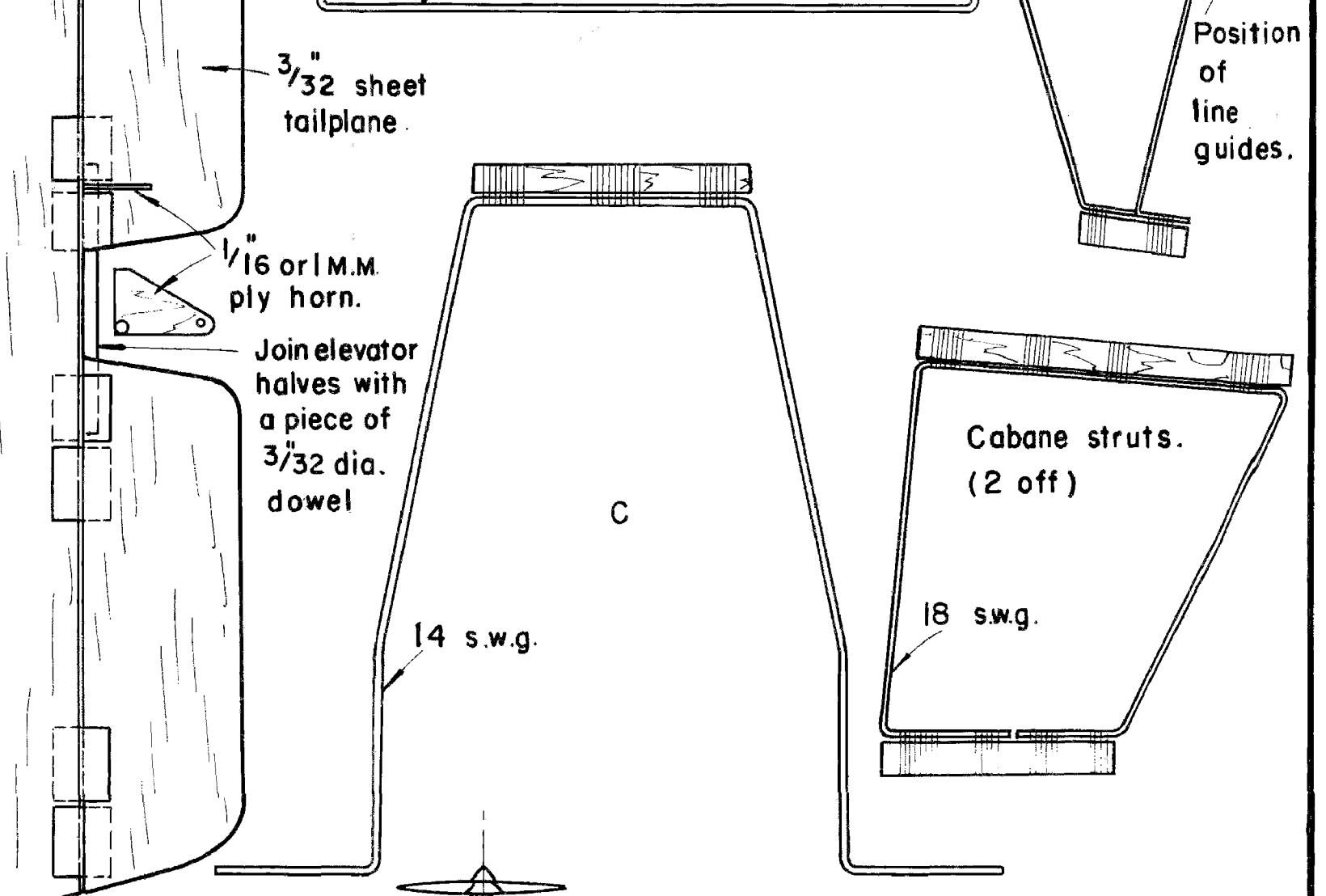
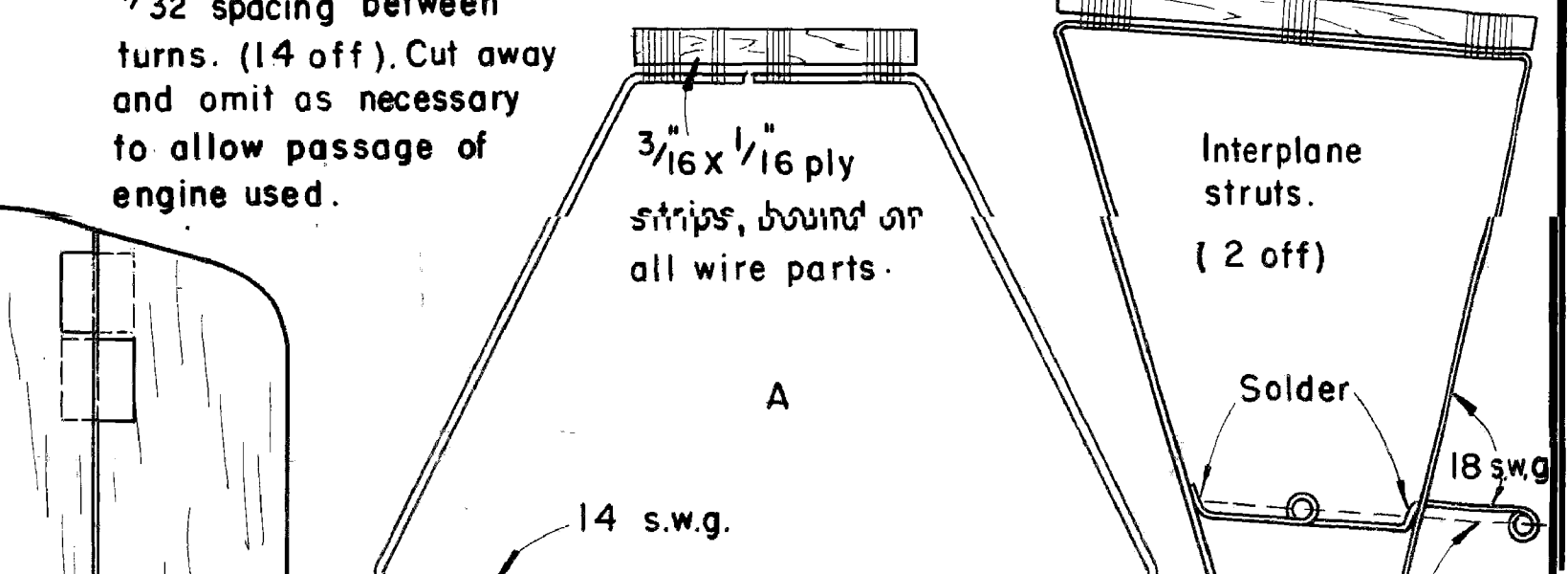
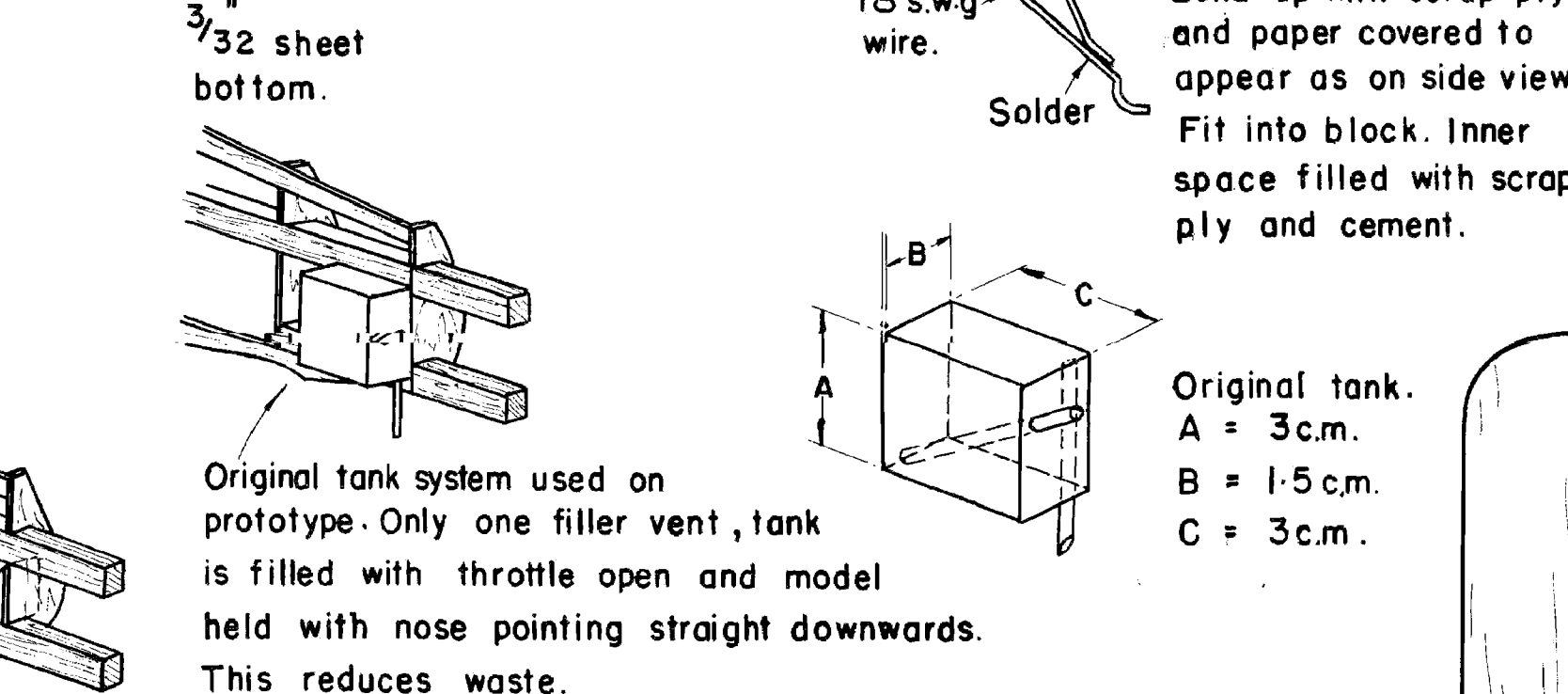
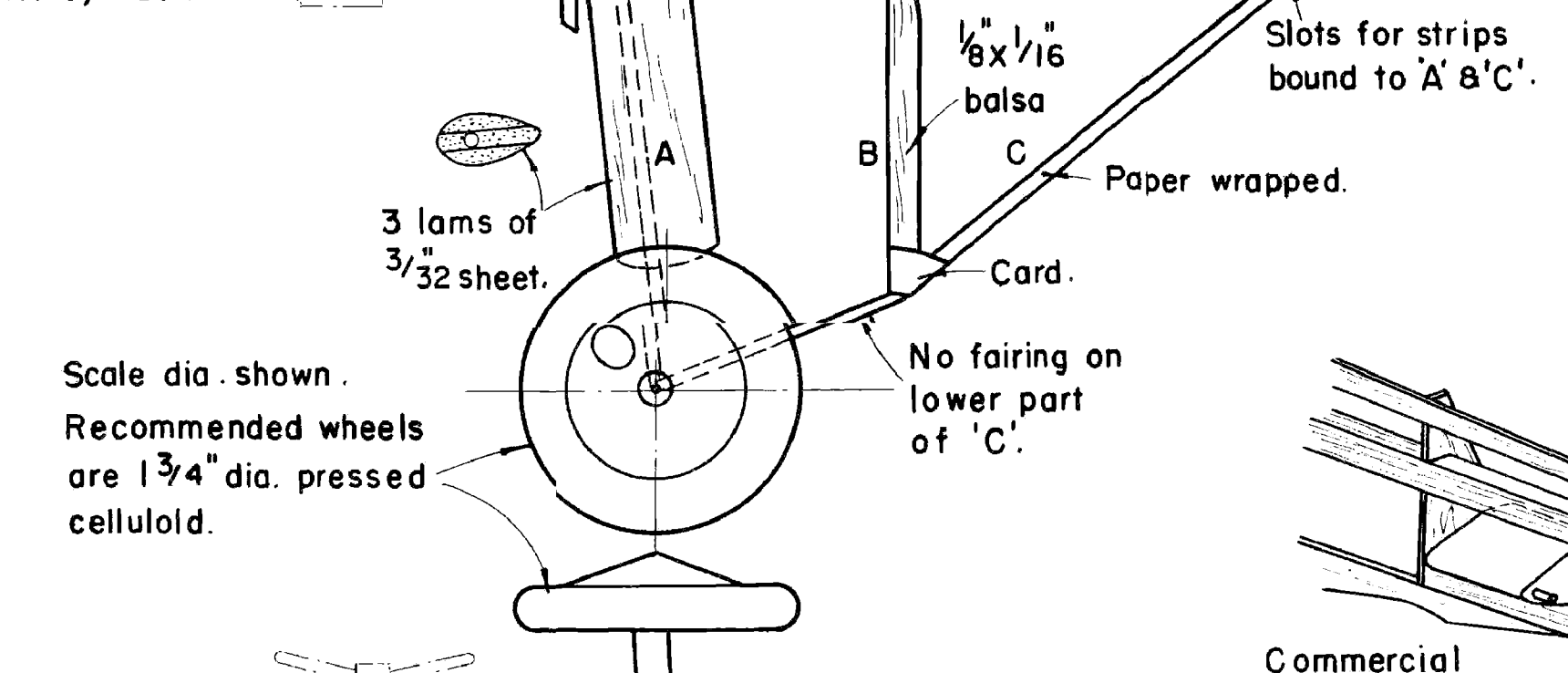
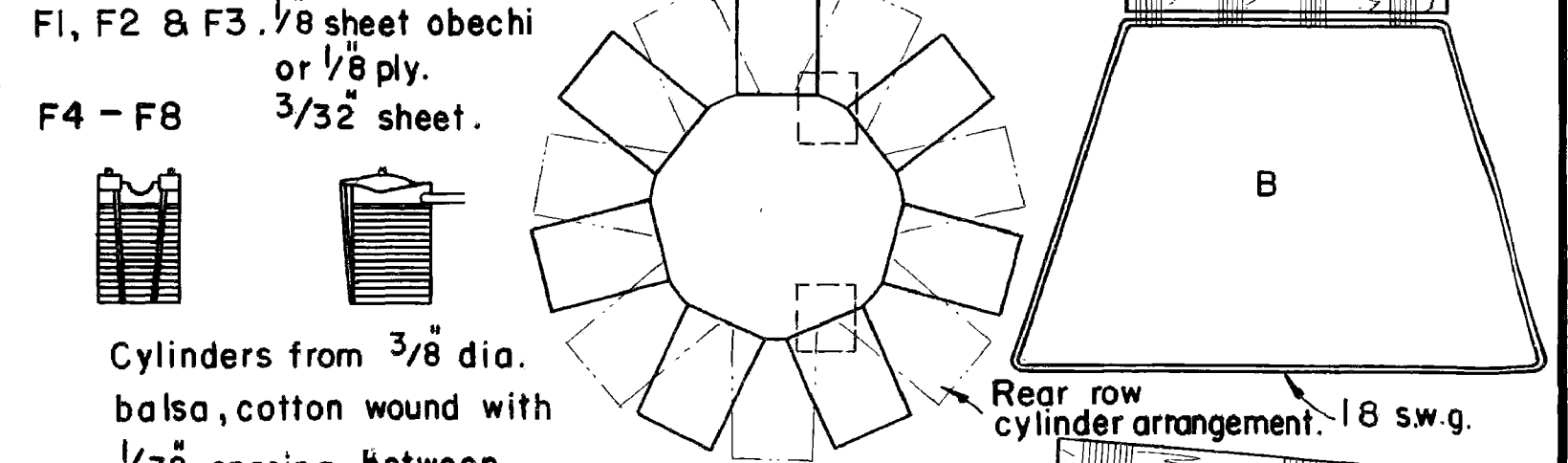
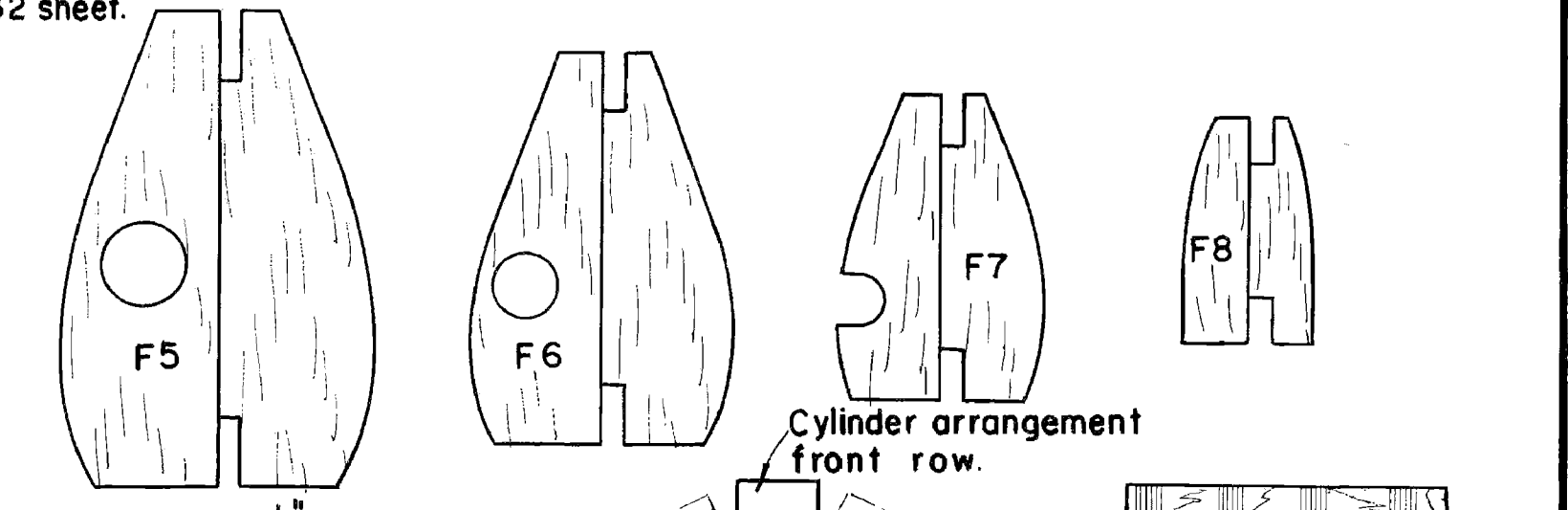
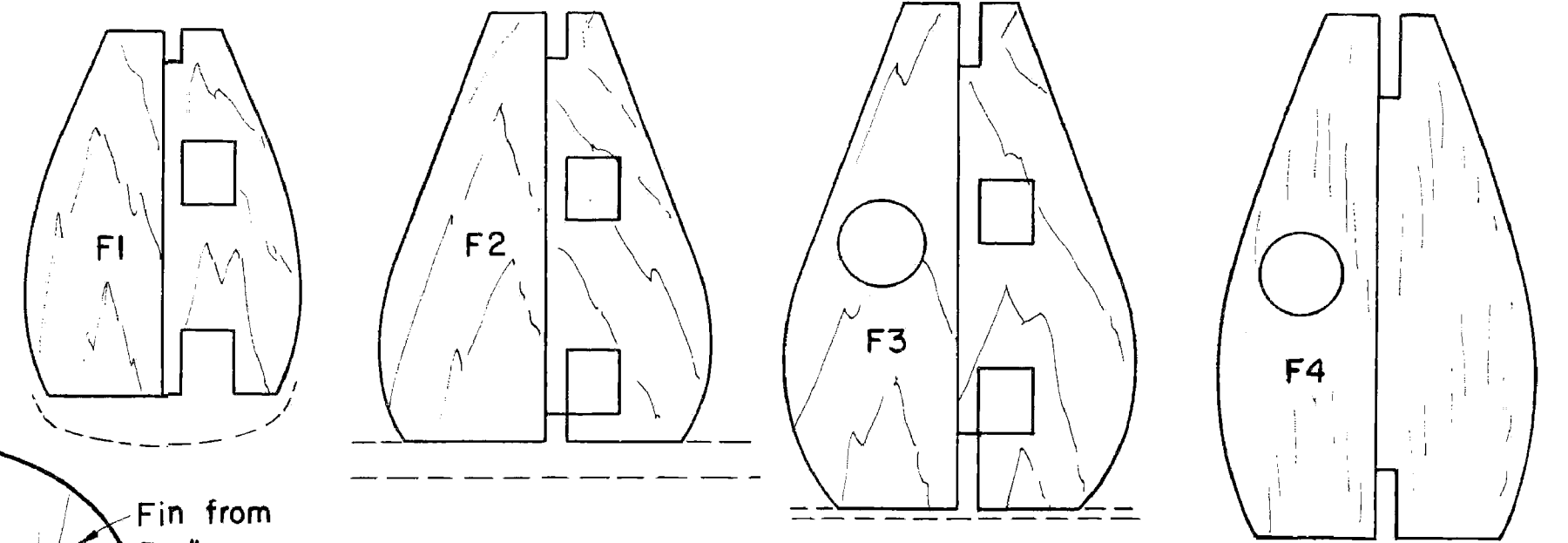
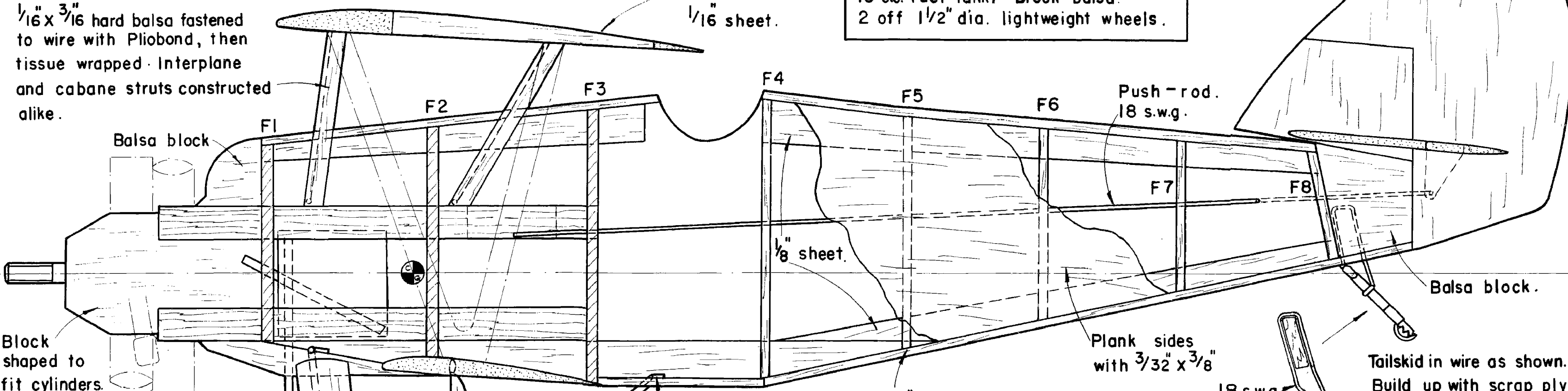


SAS

Armstrong Whitworth
SISKIN III
 DESIGNED BY
C. B. Hall.
 COPYRIGHT OF
THE AEROMODELLER PLANS SERVICE
 38, CLARENDON RD., WATFORD, HERTS.

- Materials Required.**
- 2 sheets of 3/32 x 3" x 36" balsa.
 - 1 " " 3/16 x 3" x 18" "
 - 1 " " 1/4 x 3" x 18" "
 - 1 strip 1/8 x 3/8 x 36" "
 - 1 " " 1/16 x 1/4 x 36" "
 - 9" x 3/8 x 5/16" engine bearer.
 - 2" x 8" of 1/8" obechi or 3/32 ply.
 - 1 off 36" of 14 s.w.g. wire.
 - 2 " 36" " 18 s.w.g. wire.
 - 6" of 20 s.w.g. wire.
 - 15 c.c. fuel tank. Block balsa.
 - 2 off 1/2" dia. lightweight wheels.

ALL WOODS ARE BALSA UNLESS OTHERWISE STATED.



- Grey
- Black
- Red
- White
- Blue

