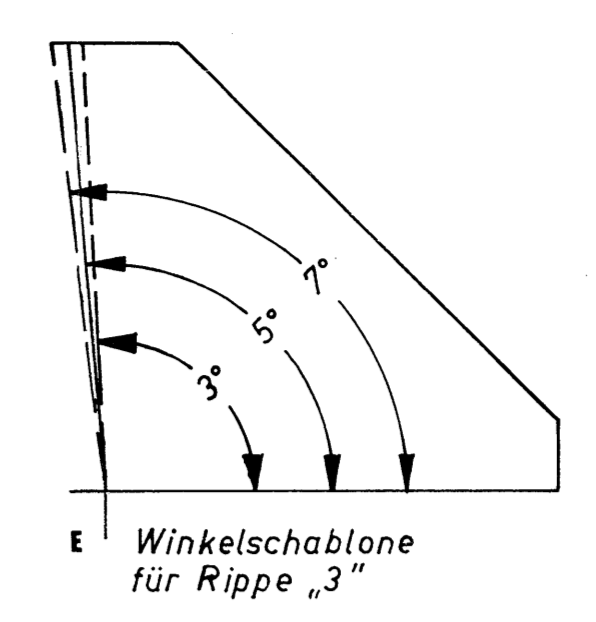
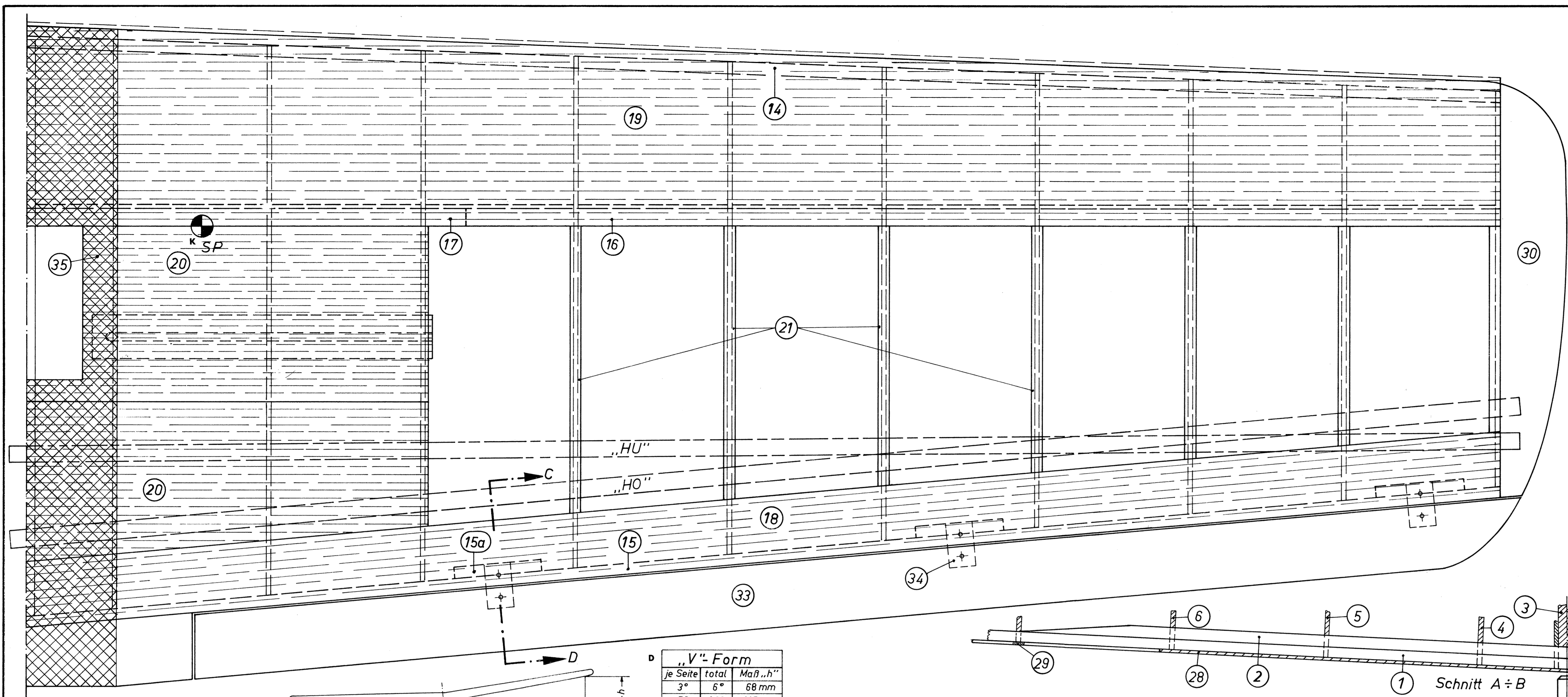


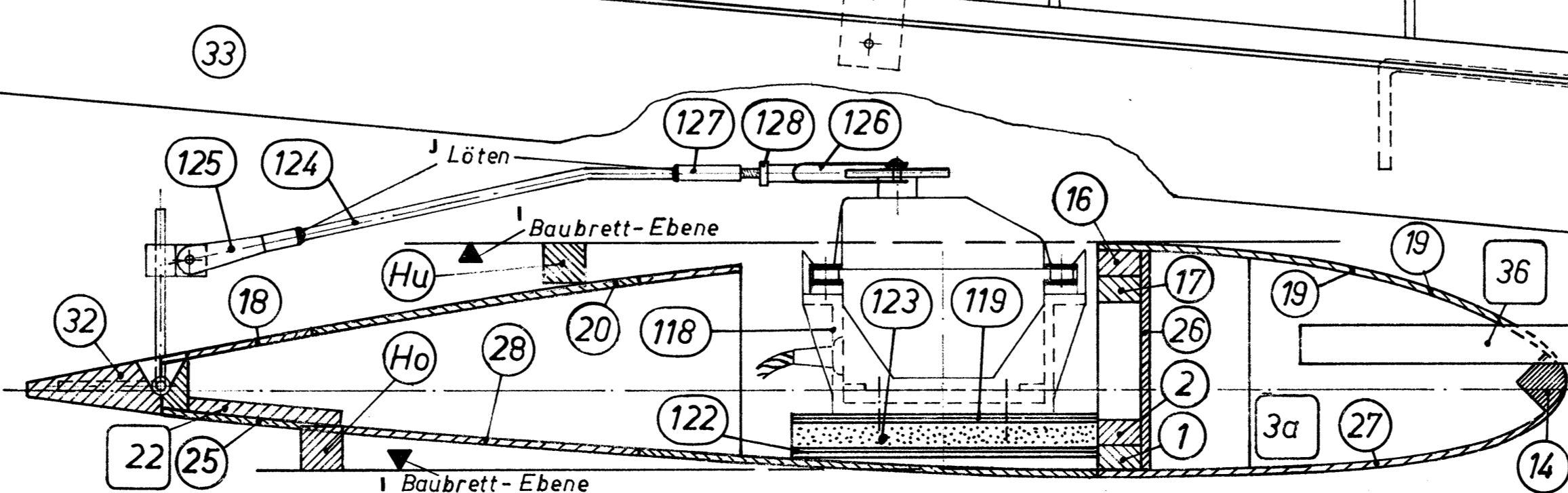
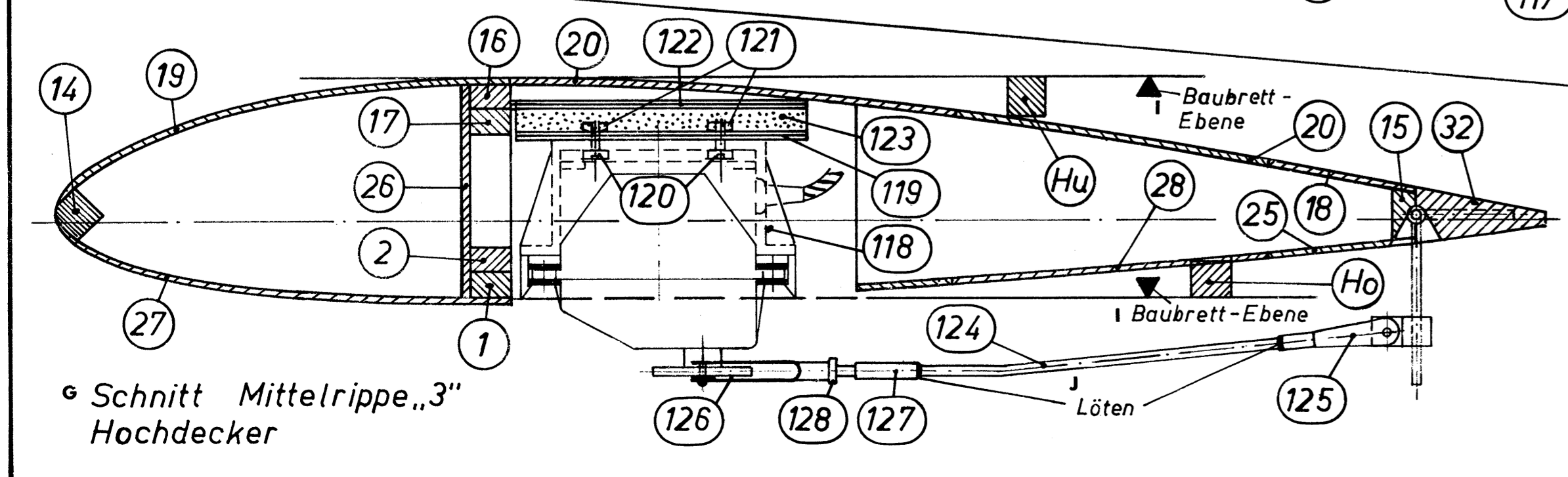
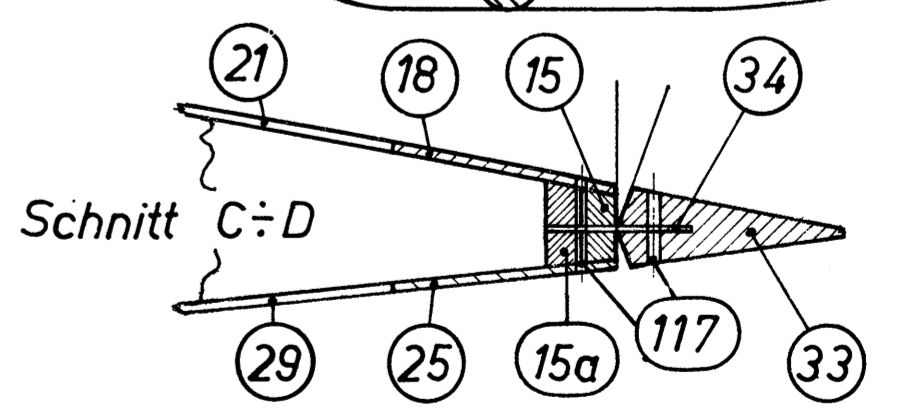
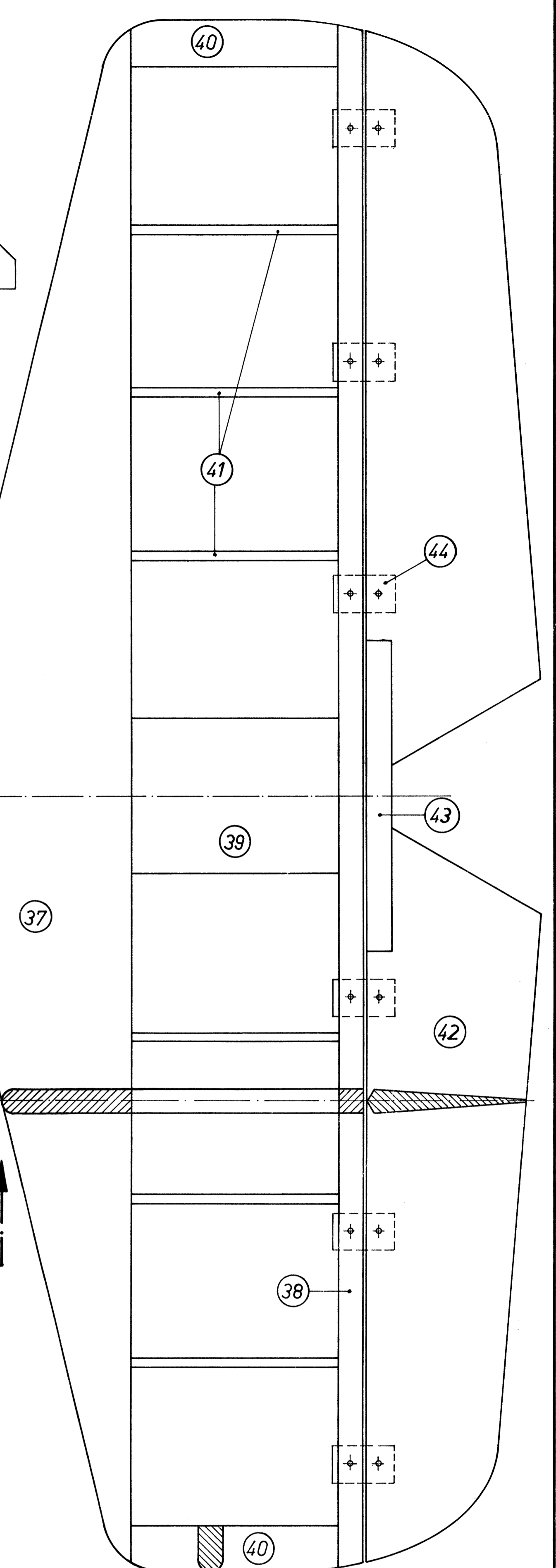
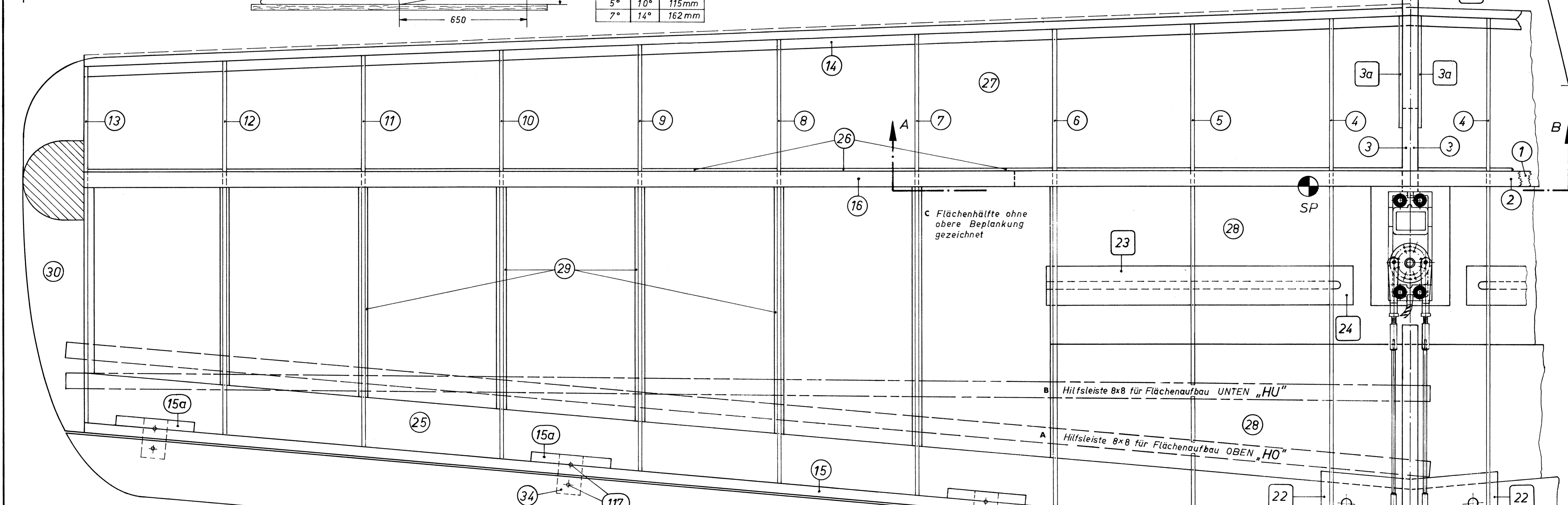
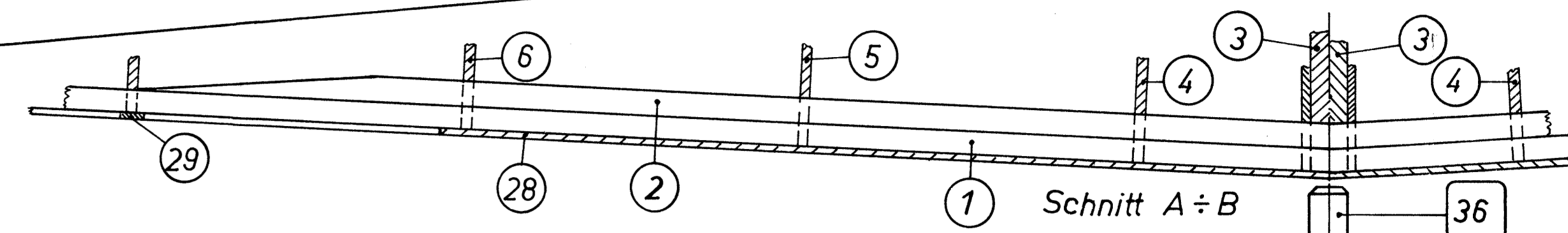
PUMA III - Tiefdecker



F Hinweis:
Alle quadratisch ein-
gerahmten Nummern
gelten nur für den
Bau der Tiefdecker-
Tragfläche.

d „V“-Form

je Seite	total	Maß „h“
3°	6°	68 mm
5°	10°	115 mm
7°	14°	162 mm



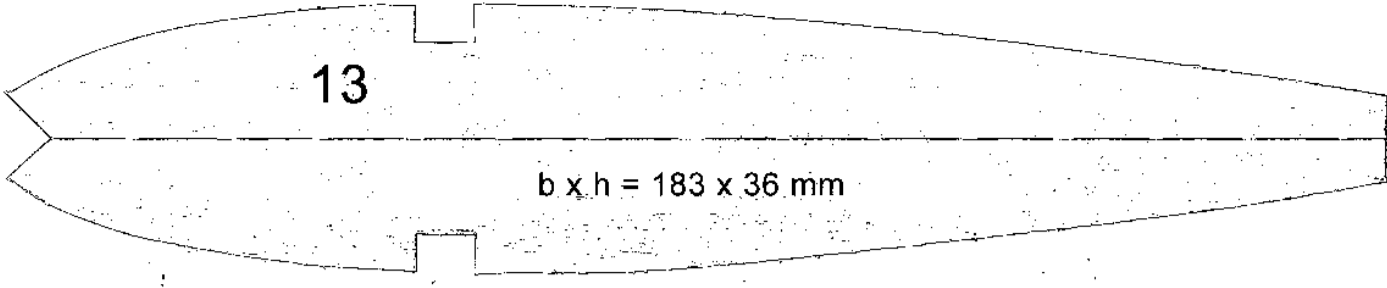
„Schnitt Mittelrippe „3“
Tiefdecker

Tragflächen- und Höhenleitwerk – Bauplan zum robbe-Montagekasten

„Puma II“ – Hochdecker und Tiefdecker

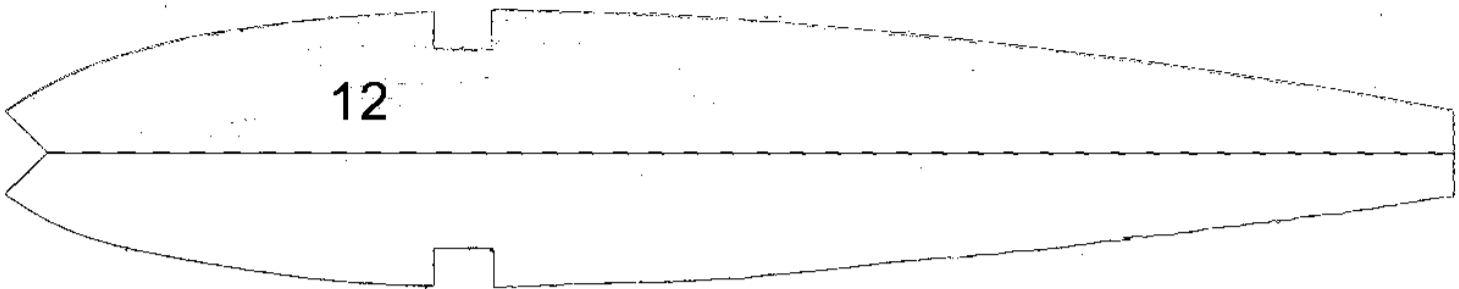
Hochdecker – Bestell-Nr. 3194
Tiefdecker – Bestell-Nr. 3195

Nachdruck, auch auszugsweise, sowie gewerbliche Verwertung jeder Art verboten.

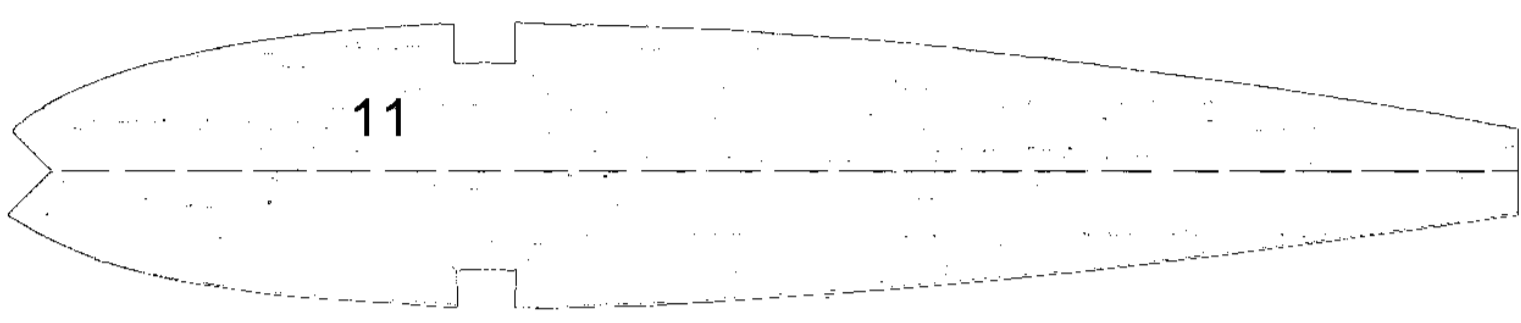


13

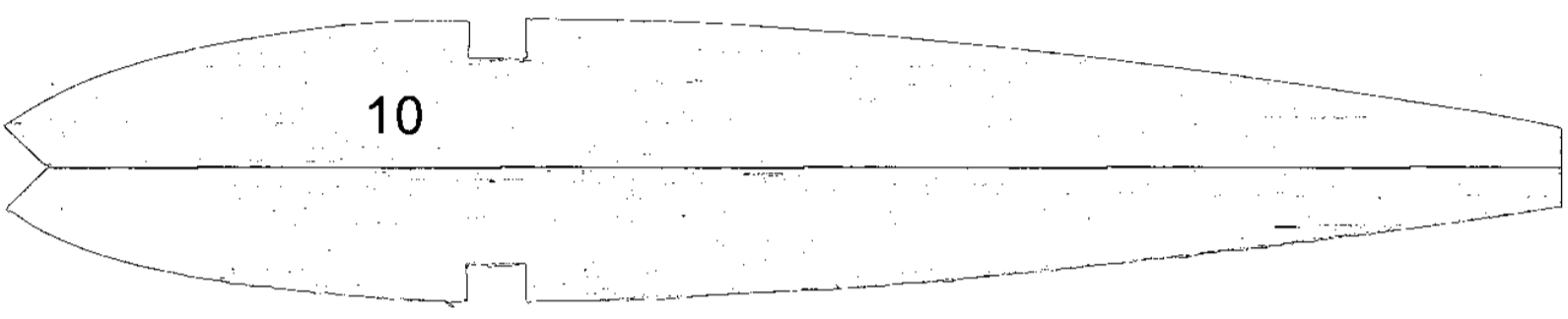
b x h = 183 x 36 mm



12



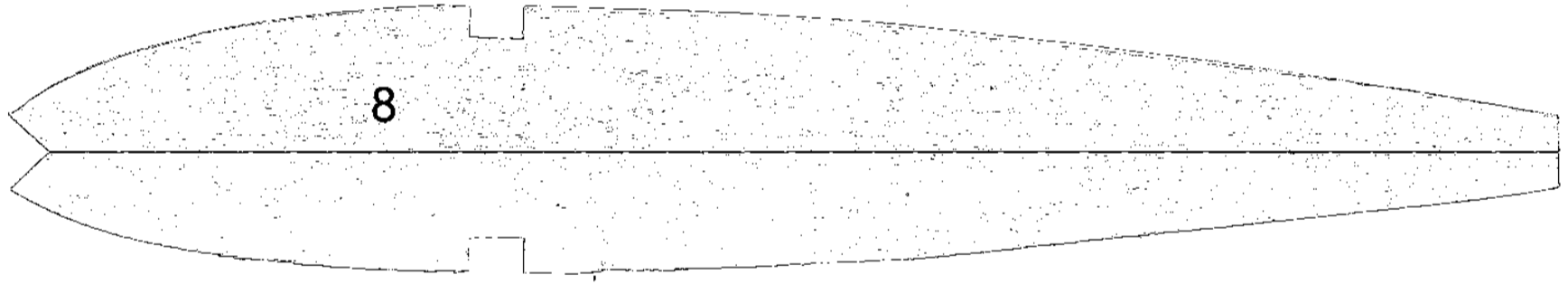
11



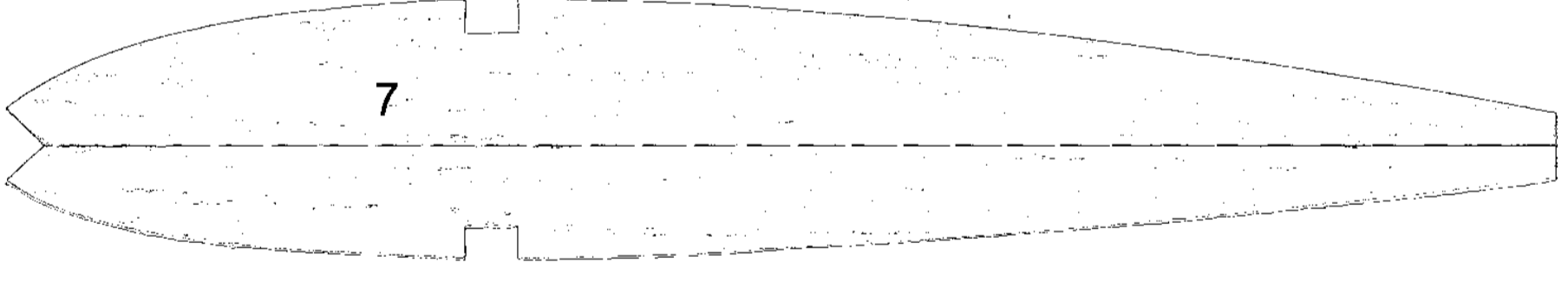
10



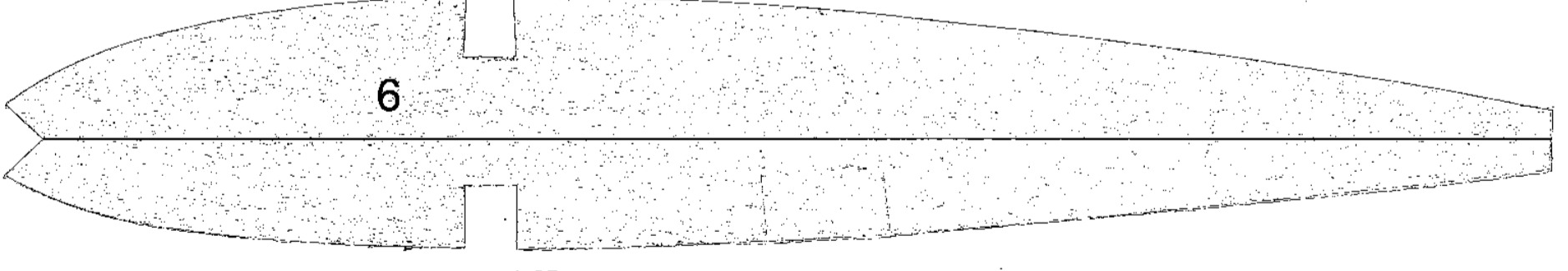
9



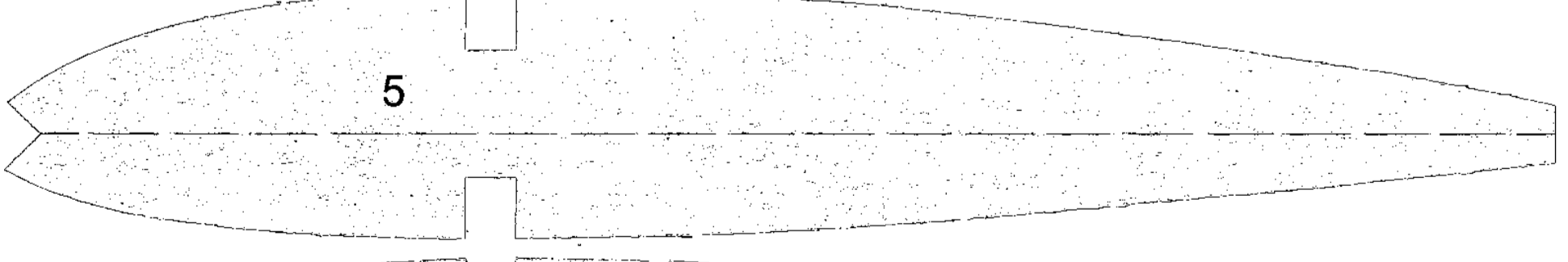
8



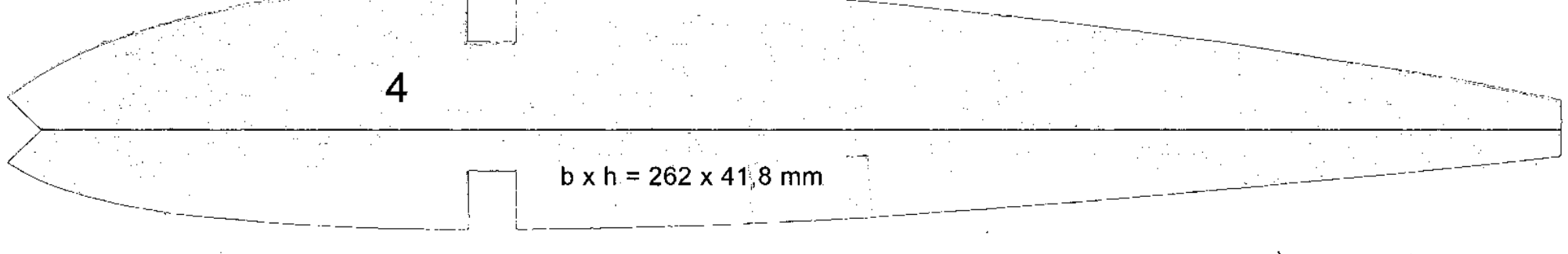
7



6



5



4

b x h = 262 x 41,8 mm