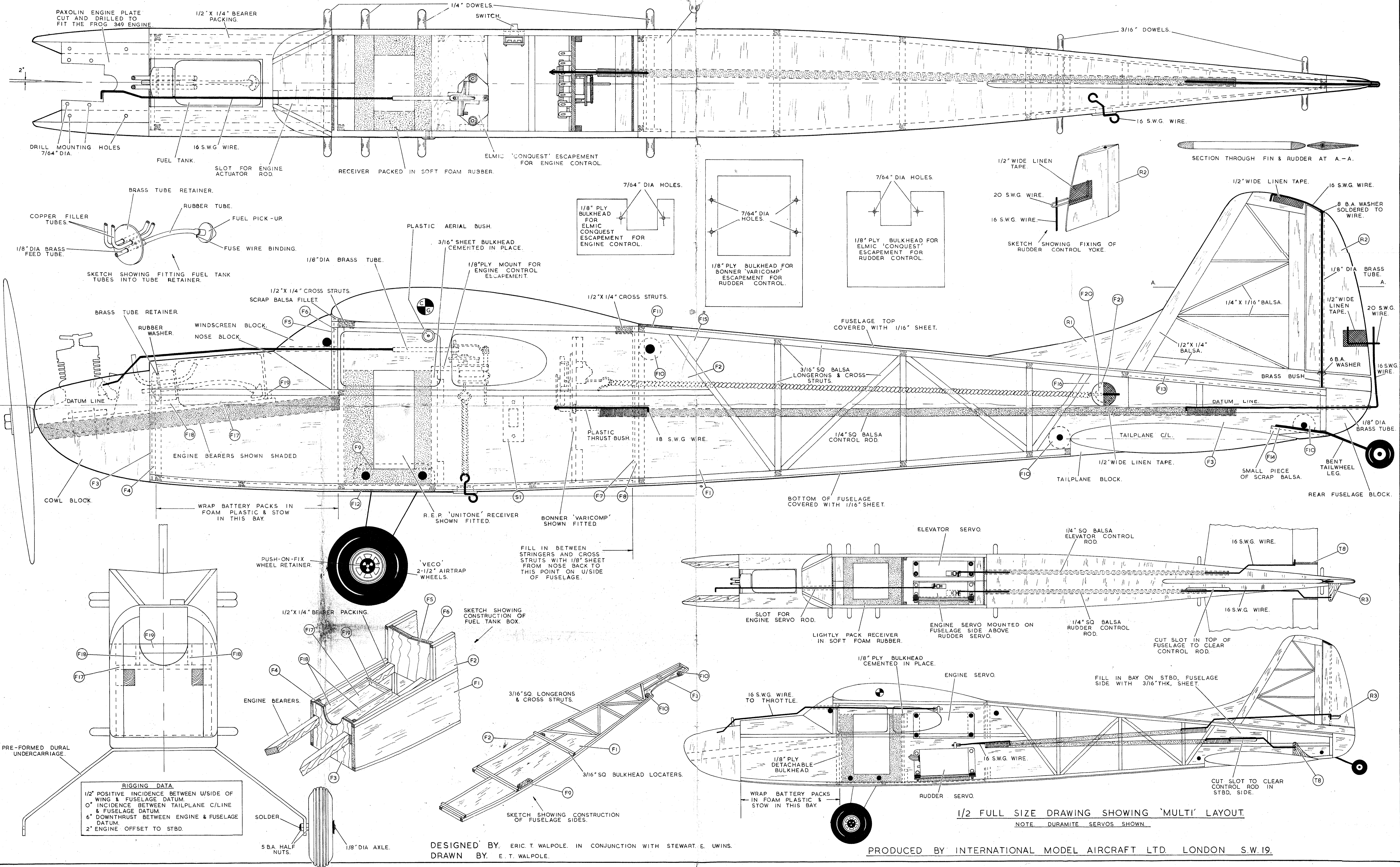


FROG 'JACKDAW' 60" SPAN RADIO CONTROL MODEL.

FOR 2.5-3.5 C.C. DIESELS
OR '19'-'35' GLOW MOTORS.

CAT. NO.
684 KP.

ALL PARTS SHOWN THUS (F) ARE PRINTED & CUT TO SHAPE.



RIGGING DATA
 1/2" POSITIVE INCIDENCE BETWEEN U/SIDE OF WING & FUSELAGE DATUM.
 0" INCIDENCE BETWEEN TAILPLANE C/LINE & FUSELAGE DATUM.
 6" DOWNTHRUST BETWEEN ENGINE & FUSELAGE DATUM.
 2" ENGINE OFFSET TO STBD.

DESIGNED BY: ERIC T. WALPOLE. IN CONJUNCTION WITH STEWART E. UWINS.
 DRAWN BY: E. T. WALPOLE.

1/2 FULL SIZE DRAWING SHOWING 'MULTI' LAYOUT.
 NOTE DURAMITE SERVOS SHOWN.

PRODUCED BY INTERNATIONAL MODEL AIRCRAFT LTD. LONDON S.W.19.

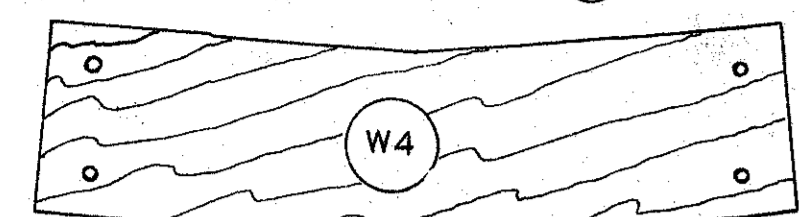
FROG 'JACKDAW'

SHEET TWO
WINGS.

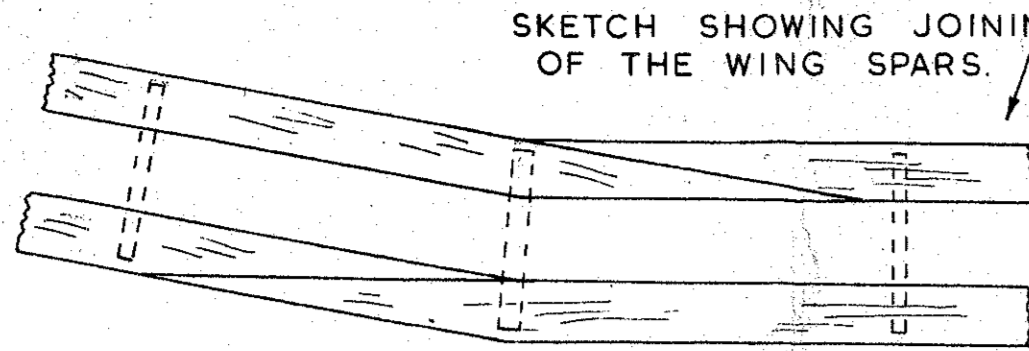
CAT. NO. 684 KP

ALL PARTS SHOWN THUS (W1) ARE PRINTED & CUT TO SHAPE.

SKETCH SHOWING JOINING OF THE WING SPARS.



DRILL 5/64" DIA HOLES TO FIT DURAMITE SERVO BEFORE FITTING TO WING.



1/16" SHEET COVERING PANEL ONLY REQUIRED WHEN MULTI SERVO IS FITTED.

5/16" X 5/16" WING LEADING EDGE.

3/16" X 3/16" SPAR.

1/4" X 1/16" CAPPING STRIPS USED AS TEMPORARY PACKING.

SKETCH SHOWING WING CONSTRUCTION.

5/16" X 1/4" WING SPARS.

1/16" SHEETING.

LEADING EDGE ROUNDED.

1/16" SHEETING.

PRE-SHAPED TRAILING EDGE.

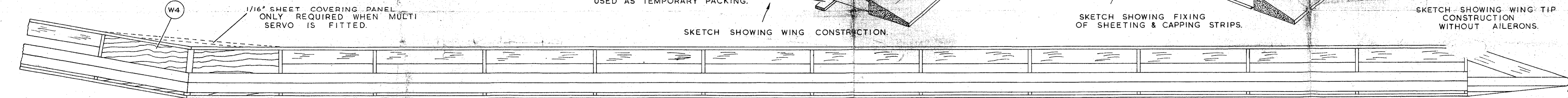
SKETCH SHOWING FIXING OF SHEETING & CAPPING STRIPS.

PRE-SHAPED WING TIP.

1/4" X 1/16" CAPPING STRIPS.

1/16" SHEETING.

SKETCH SHOWING WING TIP CONSTRUCTION WITHOUT AILERONS.



AILERON CONTROL RODS.

BIND WITH FUSE WIRE & SOLDER.

SKETCH SHOWING JOINING OF AILERON CONTROL RODS.

DURAMITE SERVO SHOWN SHADED.

X.

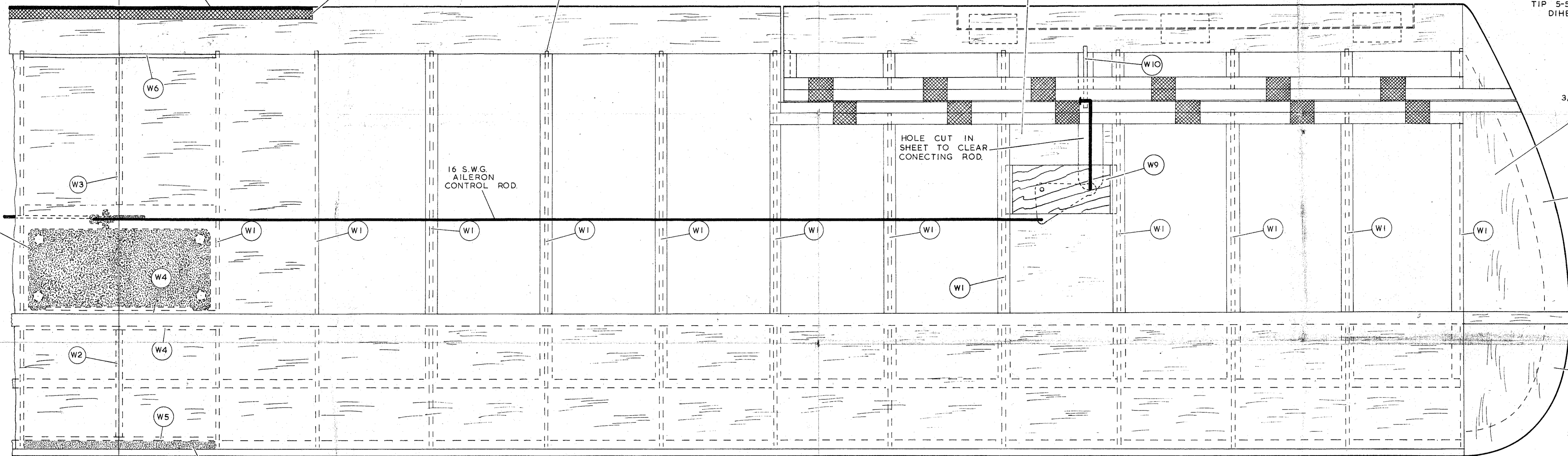
18 S.W.G. WIRE.

1/2" WIDE LINEN TAPE.

WING RIBS NOTCHED INTO TRAILING EDGE.

THIS BAY ON THE UNDERSIDE OF THE WINGS COVERED WITH 1/16" SHEET ON WINGS FITTED WITH AILERONS ONLY.

WITH THE OTHER WING PINNED FLAT ON THE BOARD PACK UP THIS WING TIP 5-5/8" TO FORM THE CORRECT DIHEDRAL ANGLE.



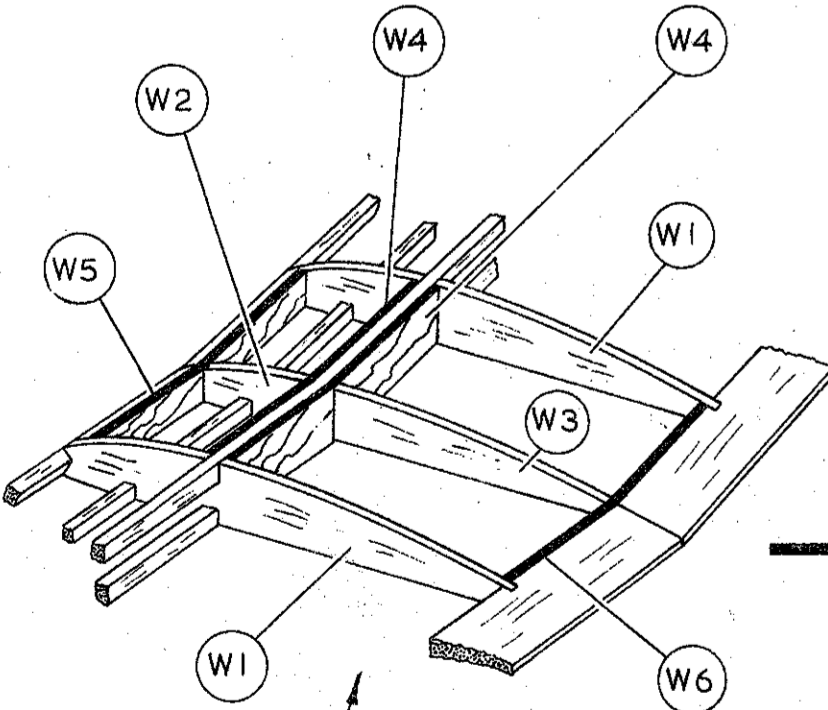
X.

SCRAP Balsa WEDGES IN THE AREA SHOWN DOTTED.

VIEW OF WING TIP WITHOUT AILERONS SHOWING ANGLE OF 3/16" THICK PRE-SHAPED TIPS.

SCRAP Balsa WEDGES.

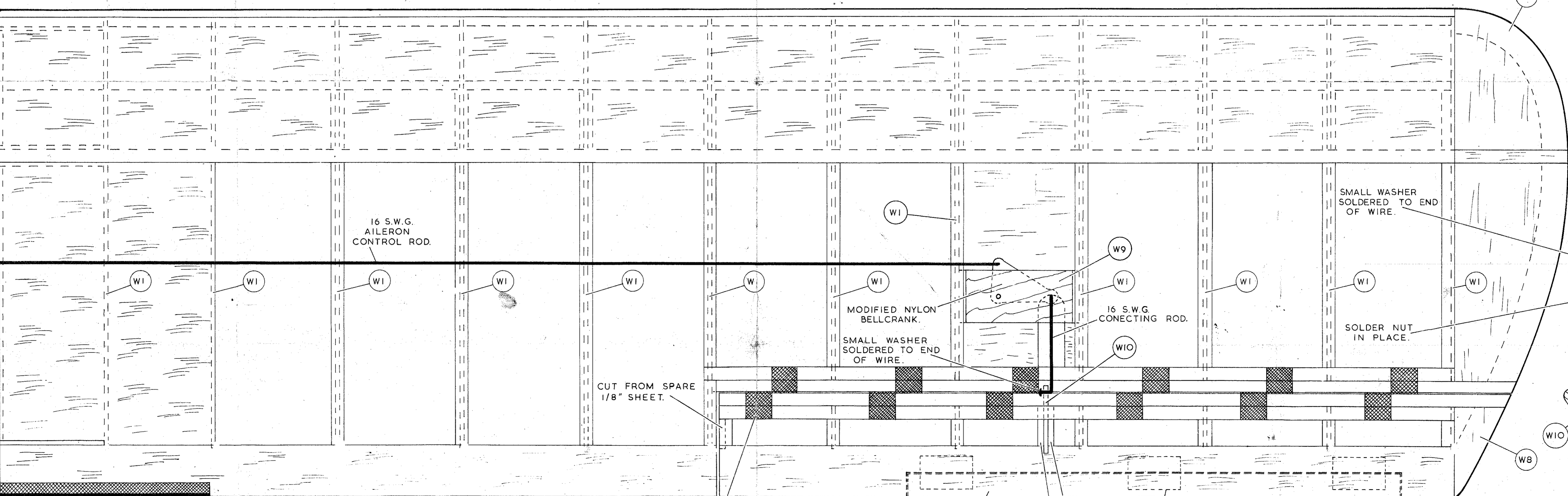
SECTION THROUGH LEADING EDGE AT WING ROOT.



SKETCH SHOWING CENTRE SECTION CONSTRUCTION WITHOUT AILERONS.

W9

X.



X.

1/2" WIDE LINEN TAPE HINGES.

TRIM TAB SHOWN DOTTED.

ALUMINIUM HINGES.

CUT FROM SPARE 1/8" SHEET.

5/16" X 5/16" LEADING EDGE WITH ROUNDED NOSE.

1/16" SHEETING.

3/16" X 3/16" SPAR.

5/16" X 1/4" SPARS.

SMALL WASHER SOLDERED TO END OF WIRE.

SOLDER NUT IN PLACE.

1/4" X 1/16" CAPPING STRIPS.

PRE-SHAPED AILERON SPARS.

1/4" X 1/16" CAPPING STRIPS.

1" X 5/16" SHAPED TRAILING EDGE.

DESIGNED BY. ERIC T. WALPOLE. IN CONJUNCTION WITH STEWART E. UWINS.

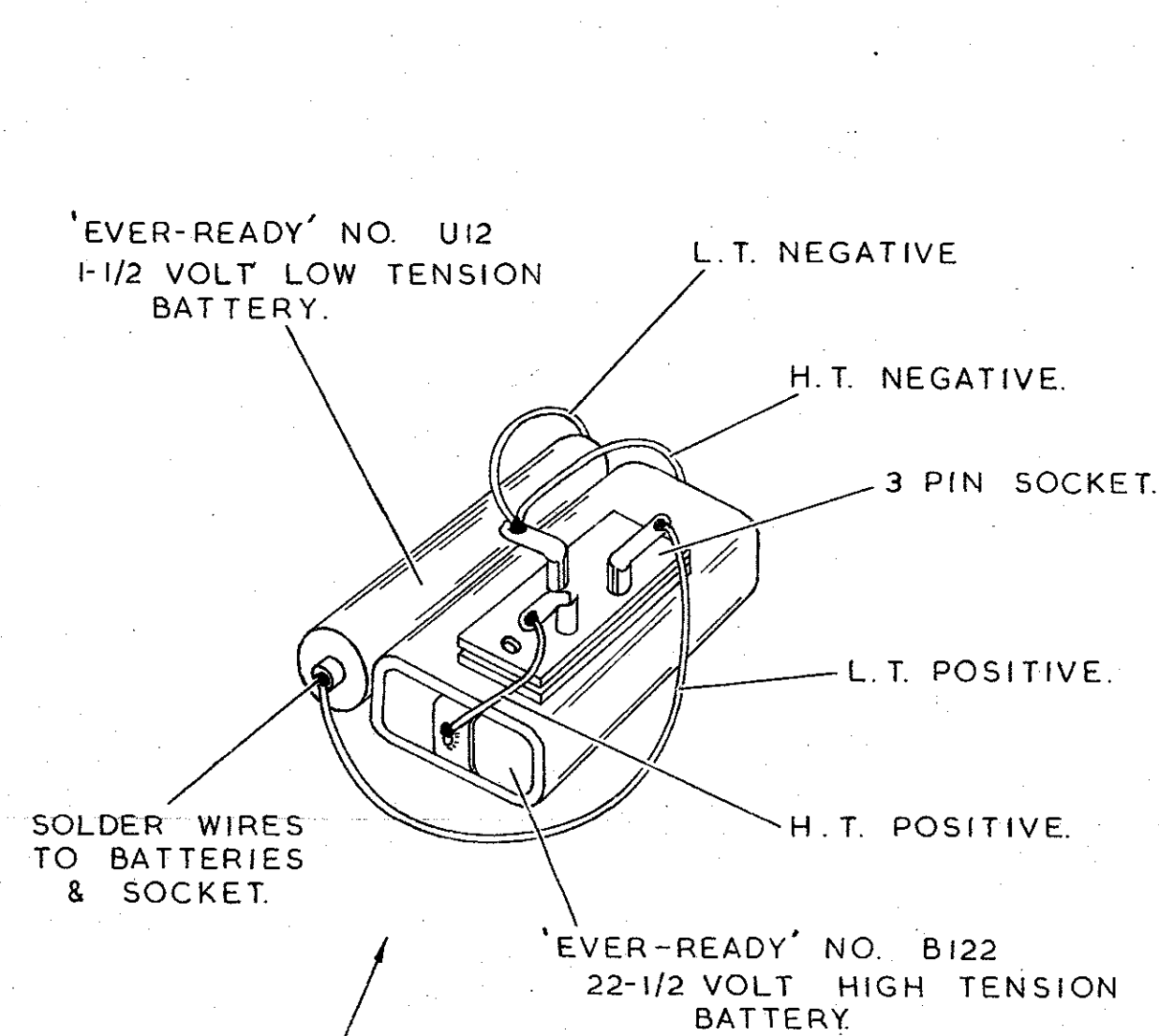
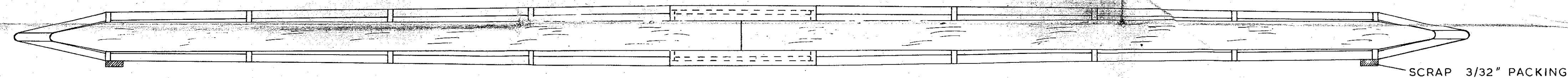
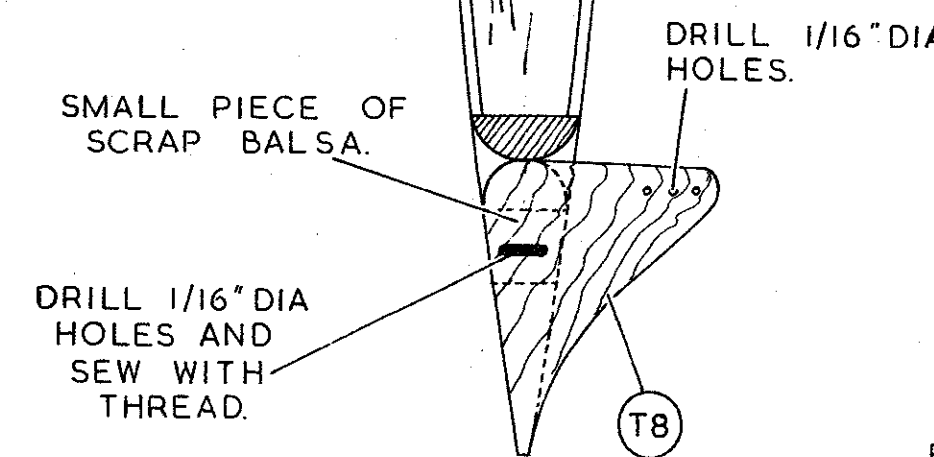
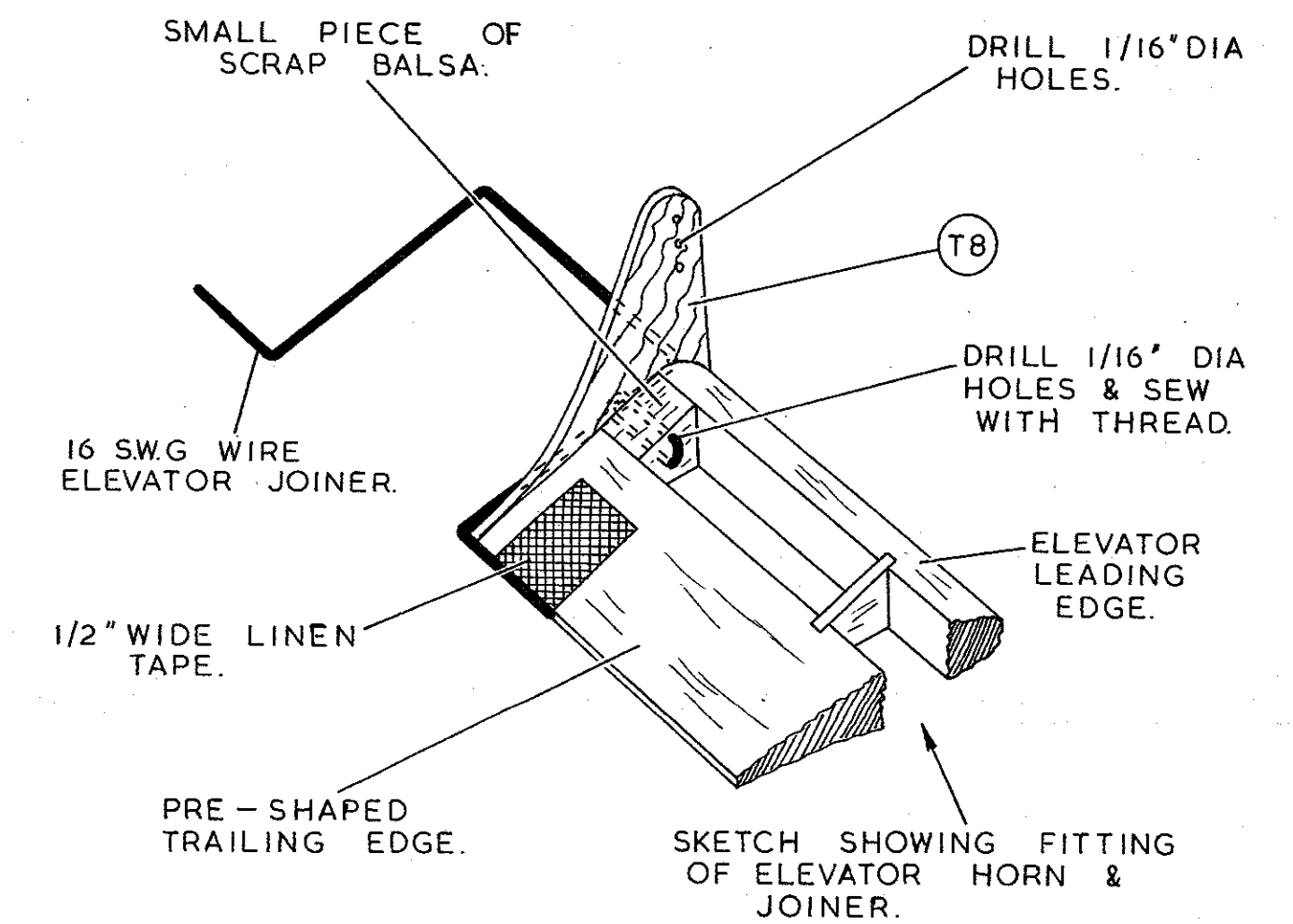
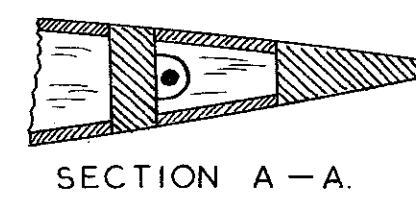
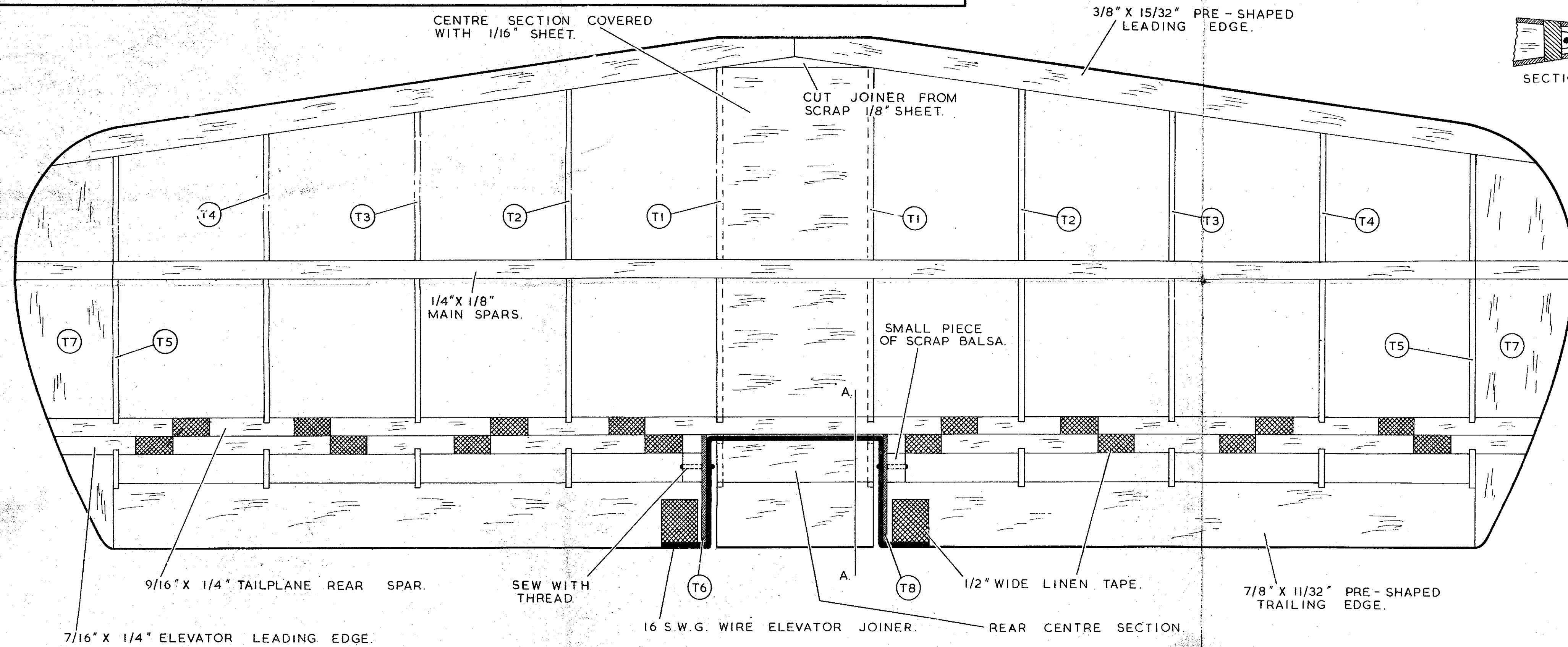
DRAWN BY. E. T. WALPOLE.

PRODUCED IN ENGLAND BY INTERNATIONAL MODEL AIRCRAFT LTD. LONDON. S.W.19.

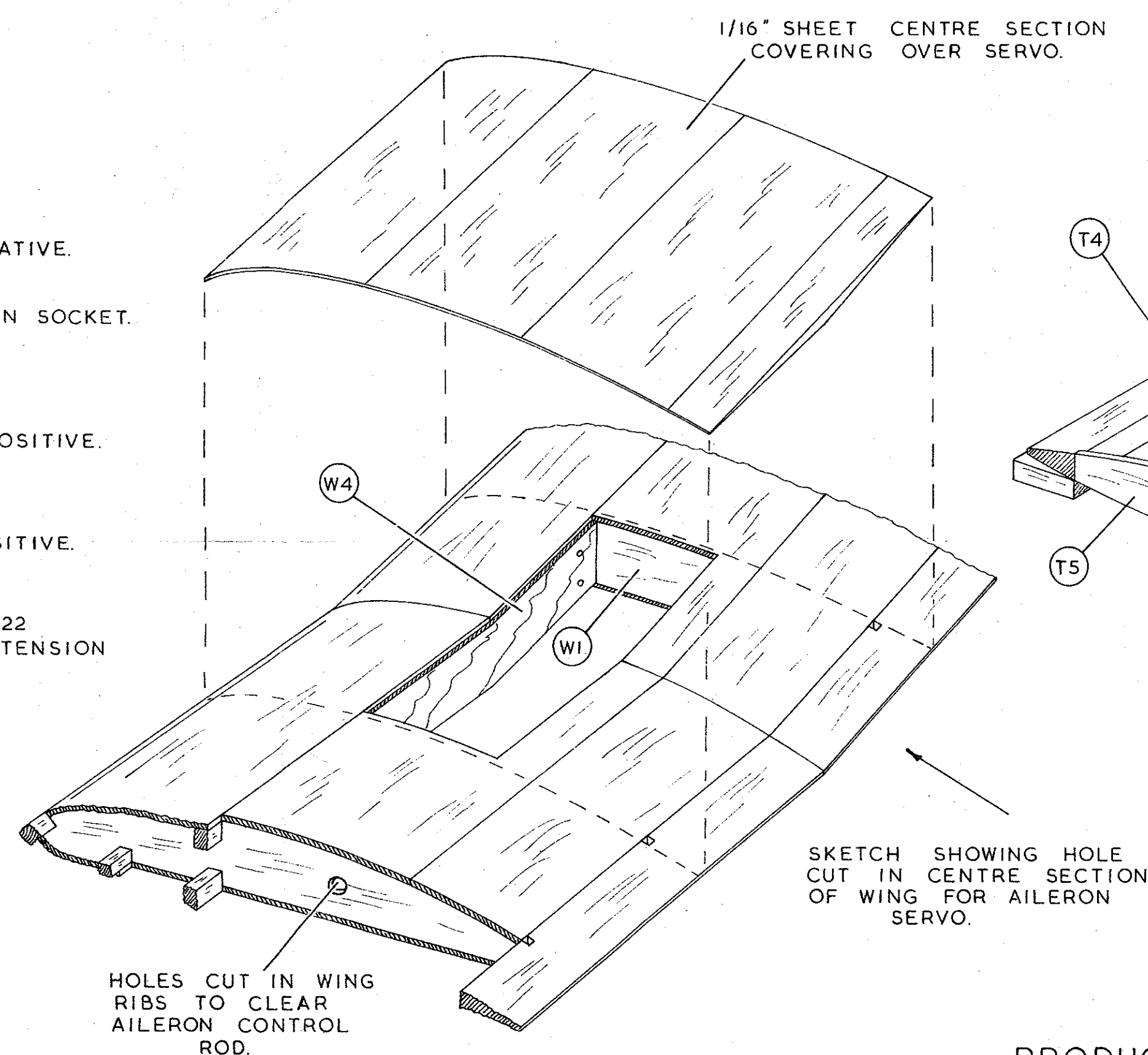
FROG 'JACKDAW'

SHEET THREE.
CAT. No. 684kp.

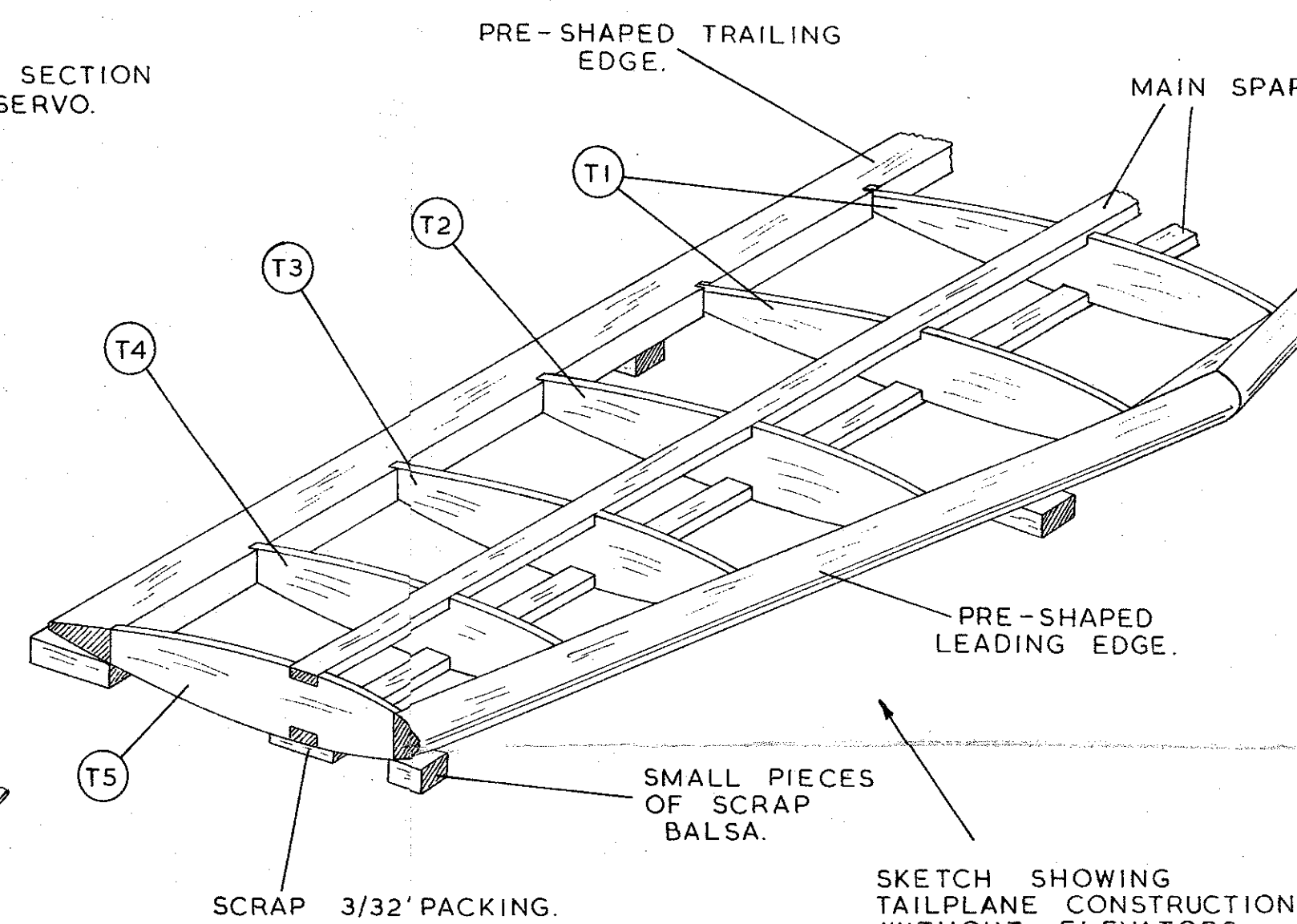
ALL PARTS SHOWN THUS (T1) ARE PRINTED & CUT TO SHAPE.



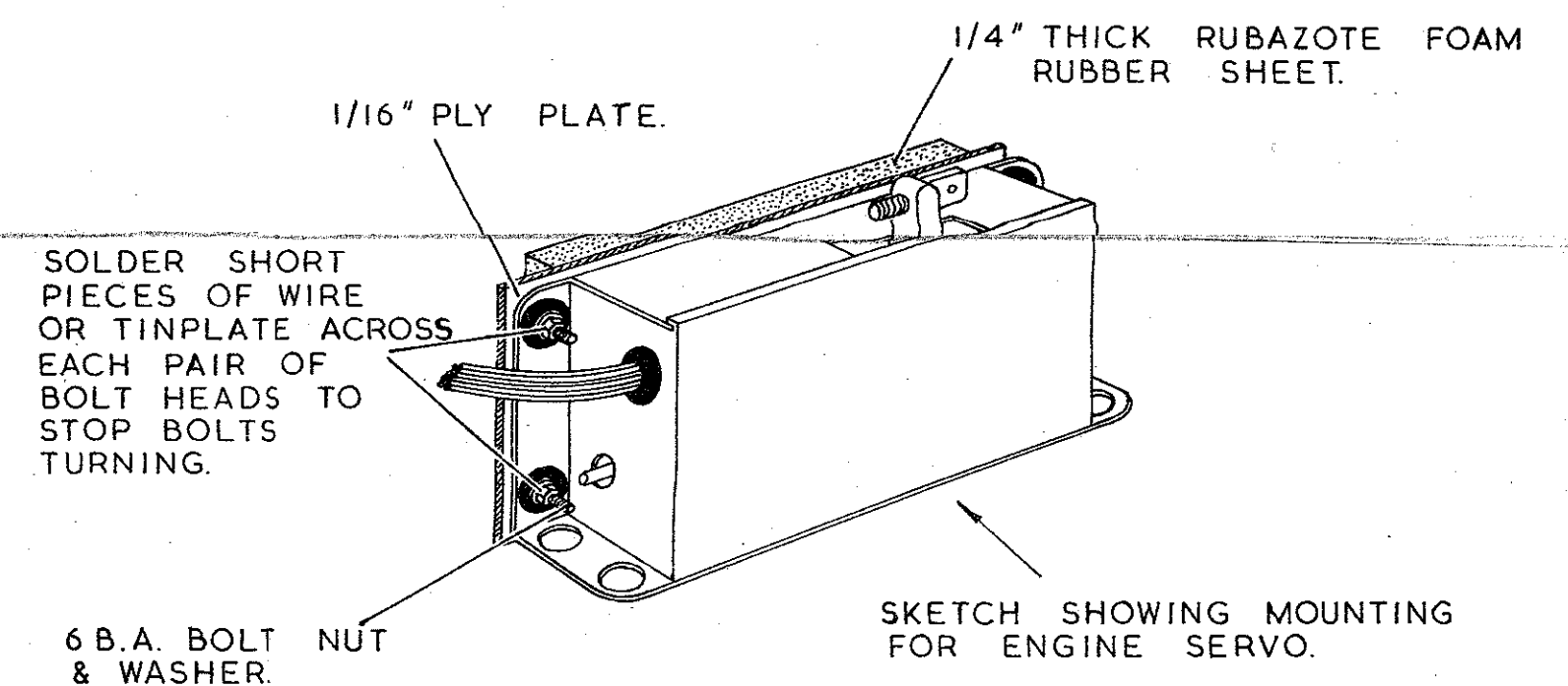
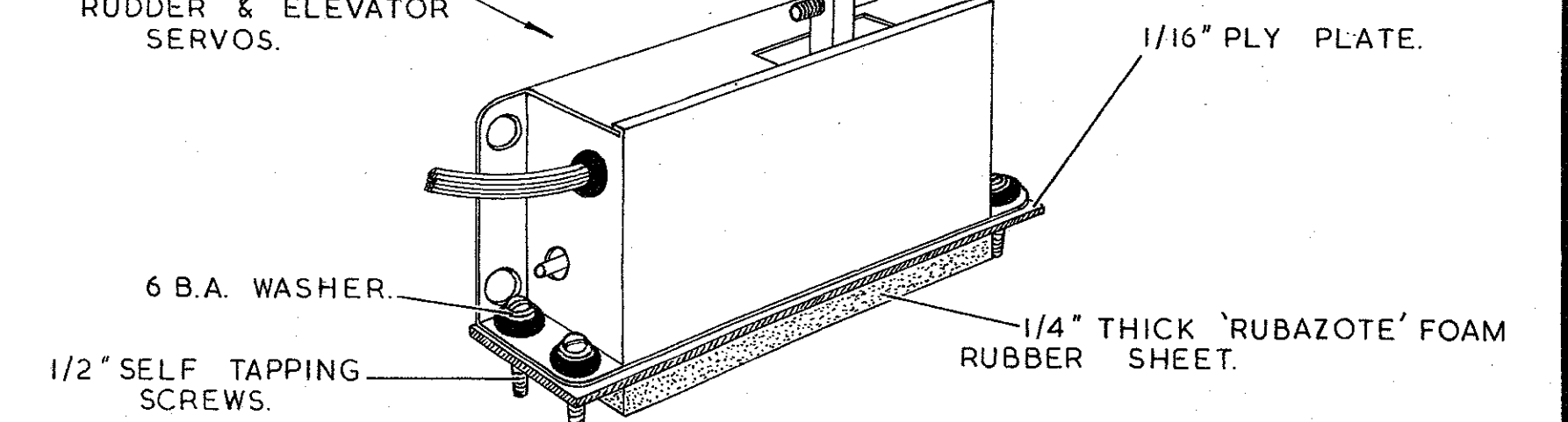
SKETCH SHOWING ASSEMBLY OF BATTERY PACK FOR THE UNITONE RECEIVER.



SKETCH SHOWING HOLE CUT IN CENTRE SECTION OF WING FOR AILERON SERVO.



SKETCH SHOWING MOUNTING FOR RUDDER & ELEVATOR SERVOS.



DESIGNED BY. ERIC T. WALPOLE IN CONJUNCTION WITH STEWART E. UWINS.
DRAWN BY. E. T. WALPOLE.