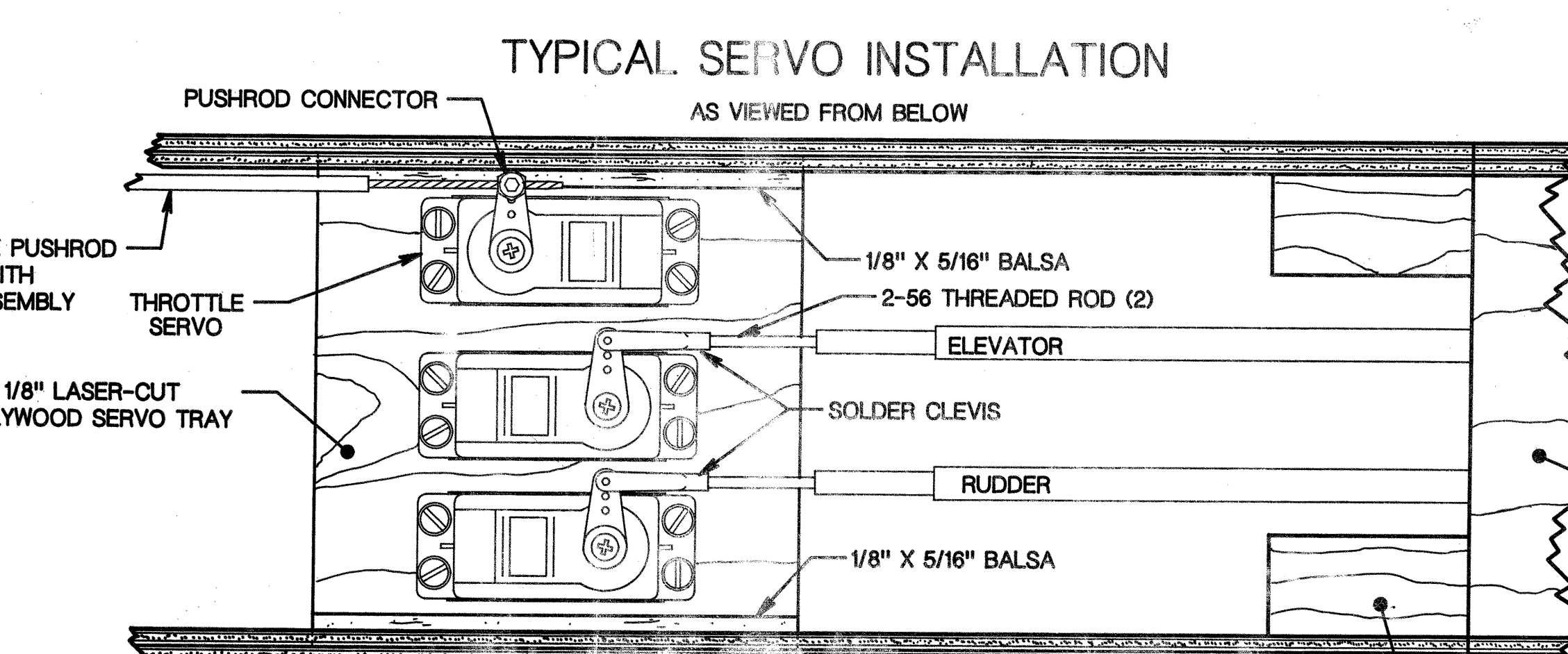
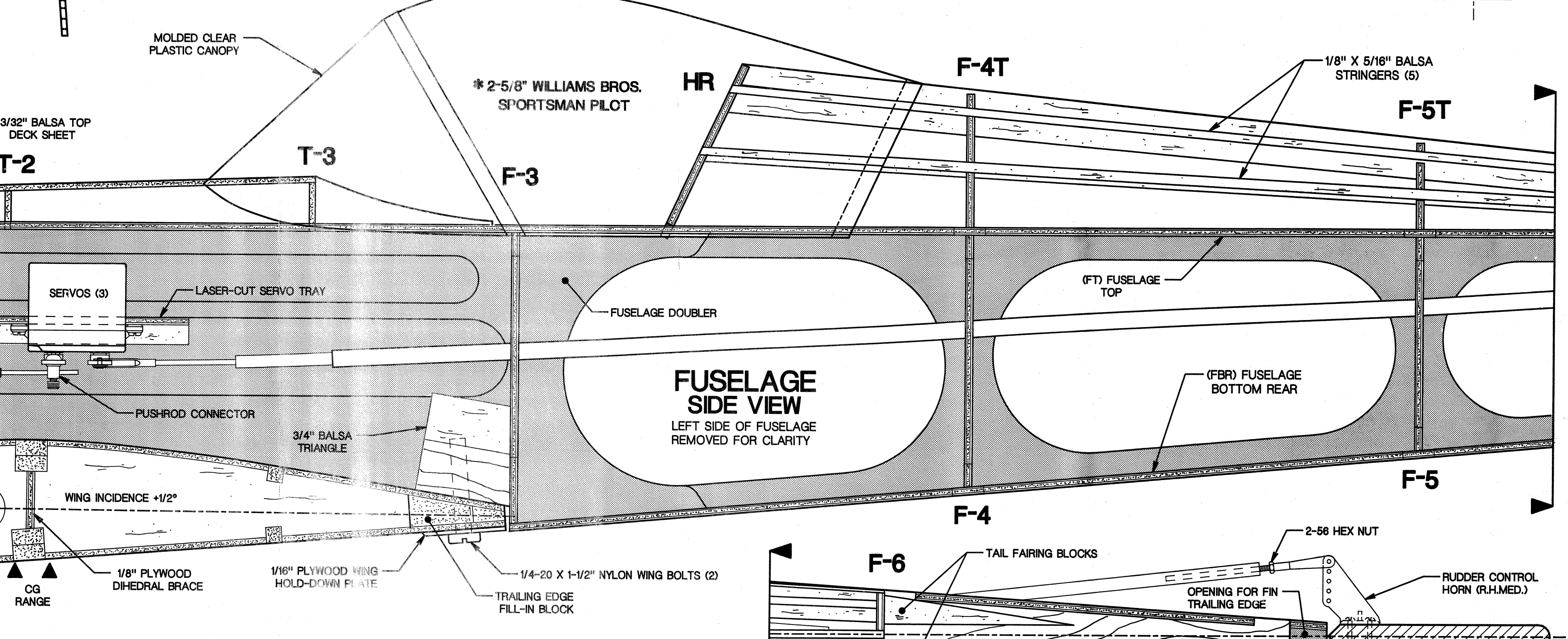


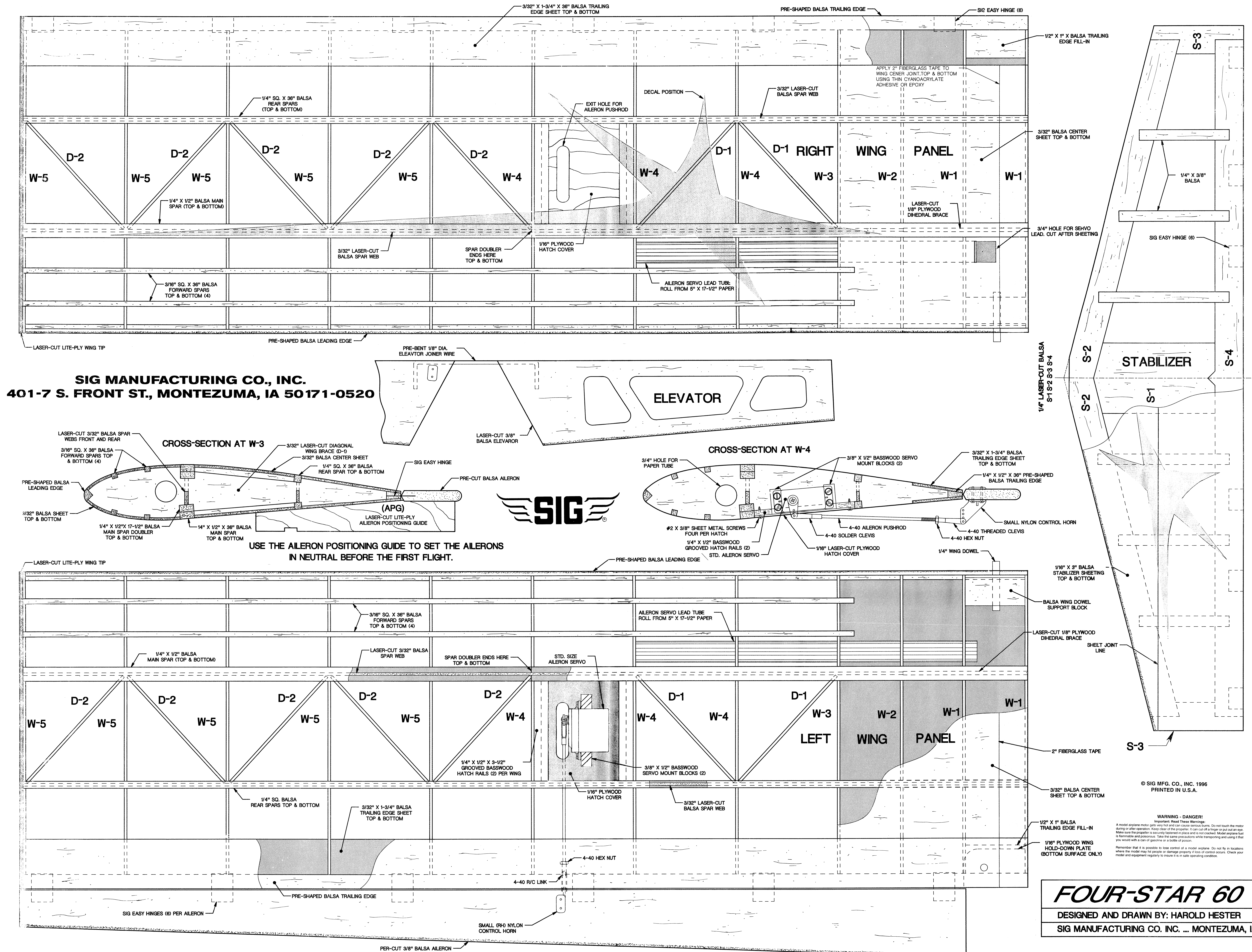
**SIG MANUFACTURING CO., INC.**  
401-7 S. FRONT ST., MONTEZUMA, IA 50171-0520



**NOTE:**  
ENGINE, RADIO, WHEELS, FUEL TANK AND SPINNER ARE NOT FURNISHED IN THIS KIT.

<b>FOUR-STAR 60</b>		
SIG MFG. CO. INC. MONTEZUMA, IA		
DESIGNED AND DRAWN BY: HAROLD HESTER		
WING SPAN 71 IN.	WING AREA: 920 SQ. IN.	RECOMMENDED ENGINES:
LENGTH: 67 IN.	WEIGHT: 7 - 8 lbs.	.80 - .85 2-STROKE .85 - .90 4-STROKE

© SIG MFG. CO., INC. 1996  
PRINTED IN U.S.A.



**FOUR-STAR 60**  
 DESIGNED AND DRAWN BY: HAROLD HESTER  
 SIG MANUFACTURING CO., INC. ... MONTEZUMA, IA.

**WARNING - DANGER!**  
 Important: Read These Warnings!  
 A model airplane motor gets very hot and can cause serious burns. Do not touch the motor during or after operation. Keep clear of the propeller. It can cut off a finger or pull out an eye. Make sure the propeller is securely fastened in place and is not cracked. Model airplane fuel is flammable and poisonous. Take the same precautions while handling and using it that you would with a can of gasoline or a bottle of poison.  
 Remember that it is possible to lose control of a model airplane. Do not fly in locations where the model may hit people or damage property if loss of control occurs. Check your model and equipment regularly to insure it is in safe operating condition.

© SIG MFG. CO., INC. 1996  
 PRINTED IN U.S.A.