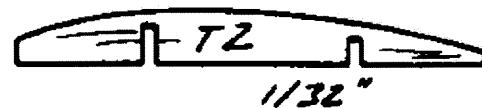
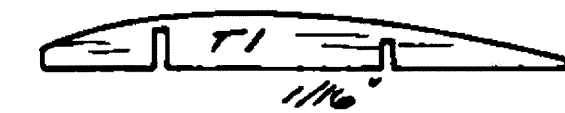
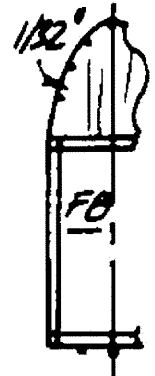
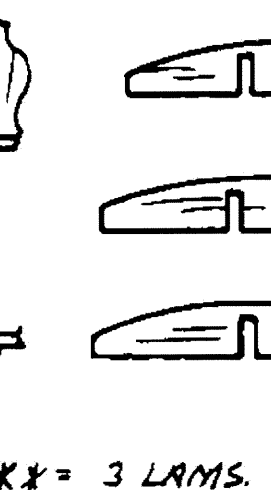
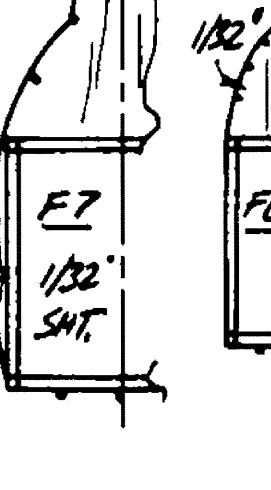
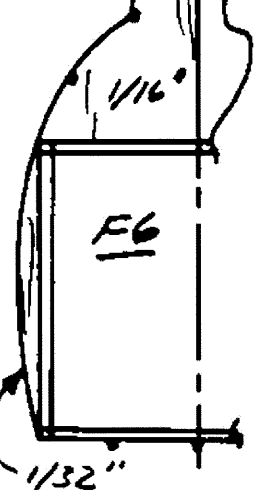
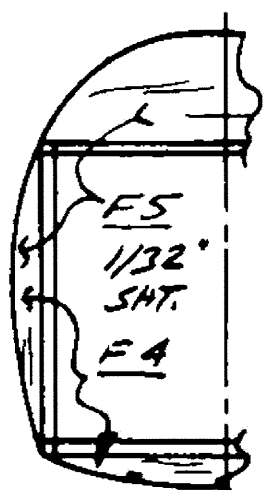
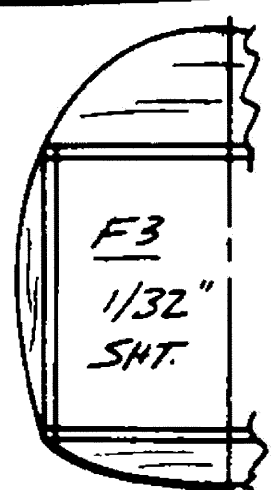
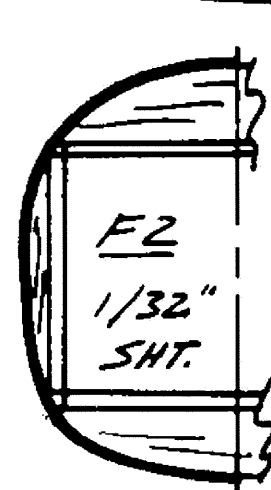
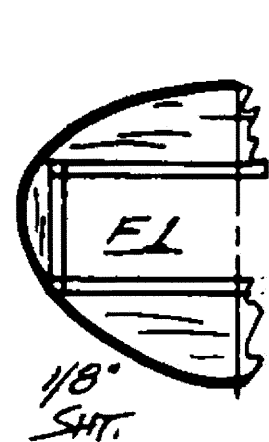
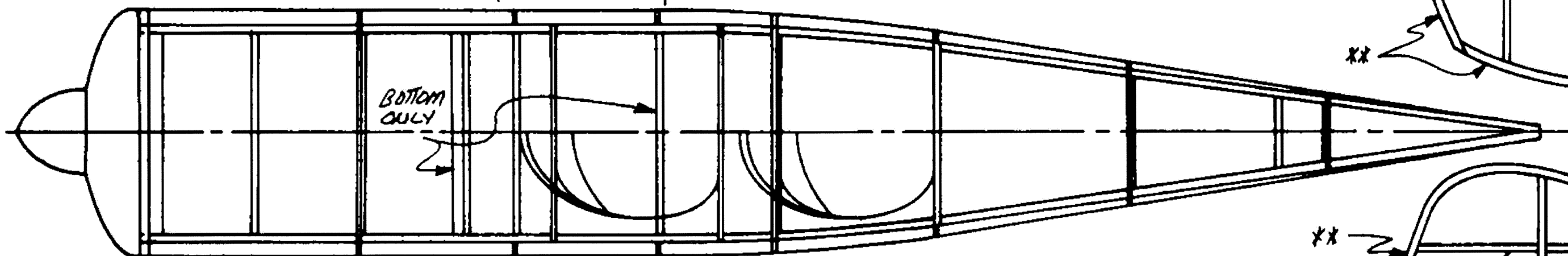
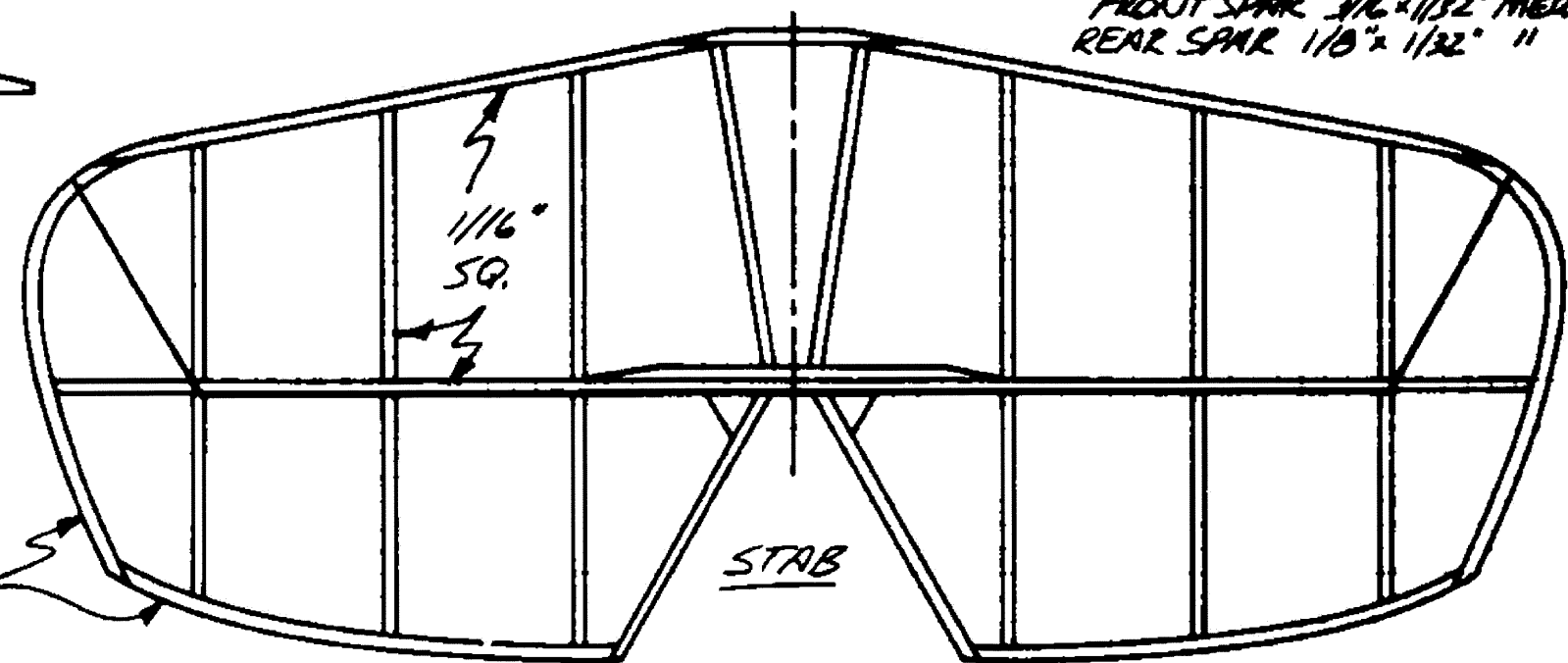


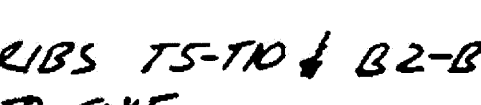
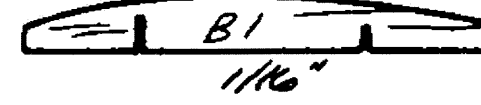
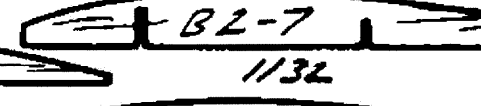
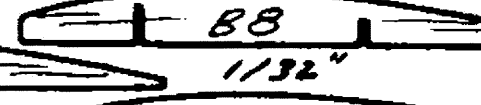
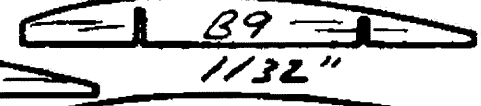
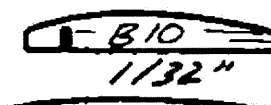
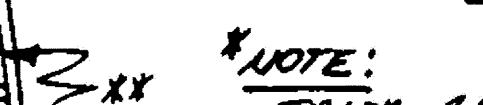
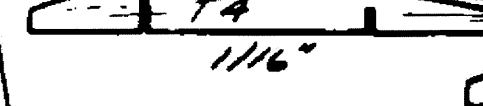
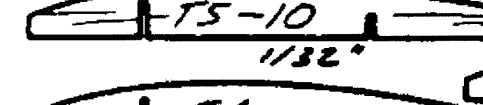
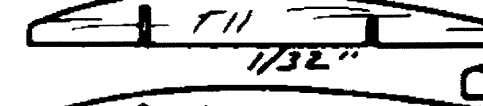
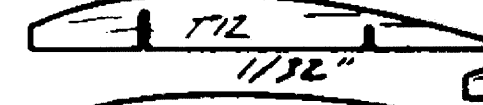
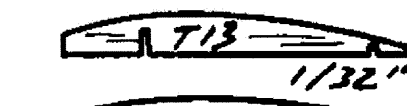
WINGS:
LE. 1/16" x 1/8" HARD
FRONT SPAR 3/16" x 1/32" MBR
REAR SPAR 1/8" x 1/32" "



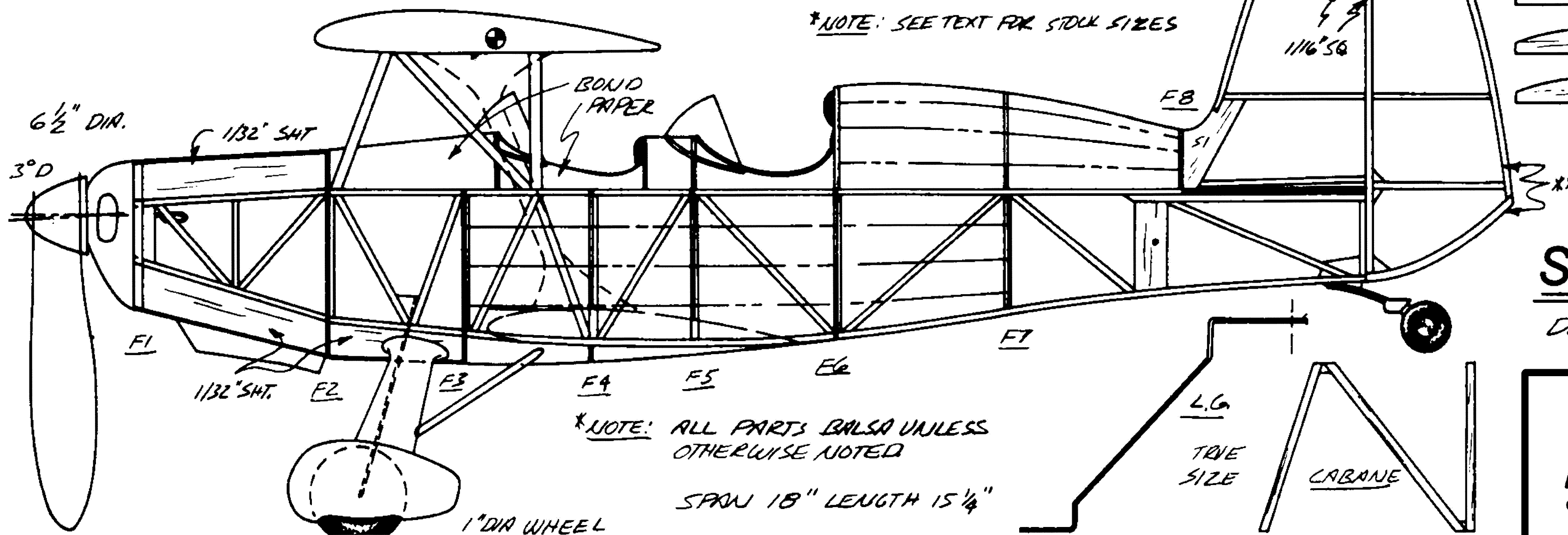
XX = 3 LAMS. 1/32" x 1/16" HARD



*NOTE: SEE TEXT FOR STOCK SIZES

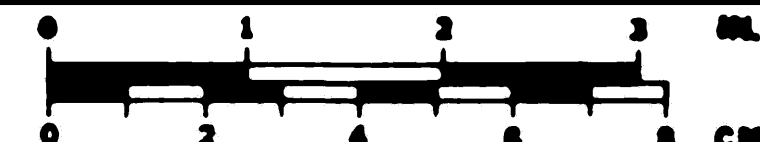


*NOTE:
TRIM RIBS T5-T10 & B2-B7
AT T.E. TO SHT.



STARDUSTER TOO

DESIGNED & DRAWN BY: STEVE GARDNER
TRACED IN INK FOR M.B. BY: SA. PATERSON



MODEL BUILDER
magazine

Plan No: 12793