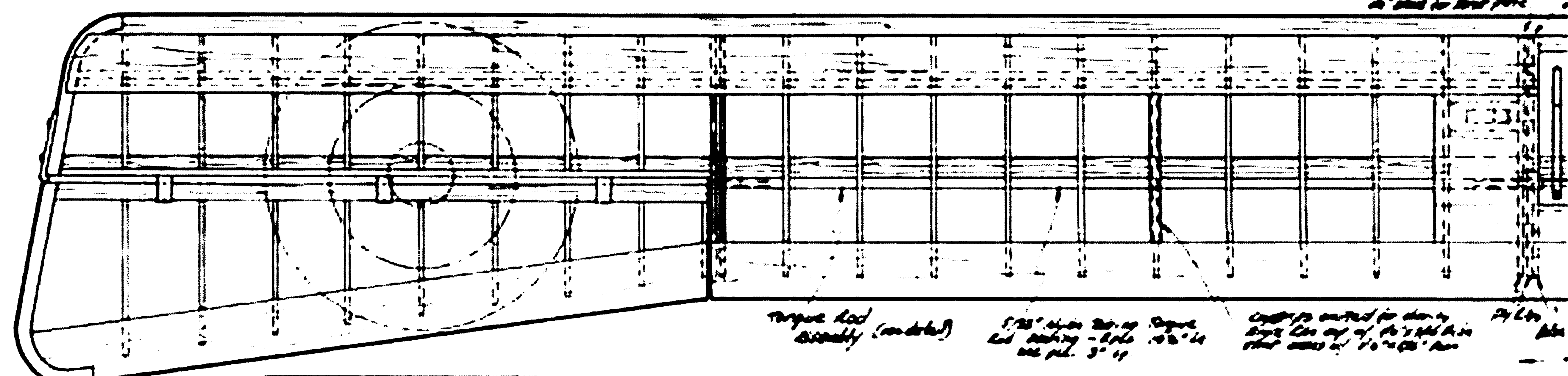


2" STANDEE SCALE
NIEUPORT 11-C

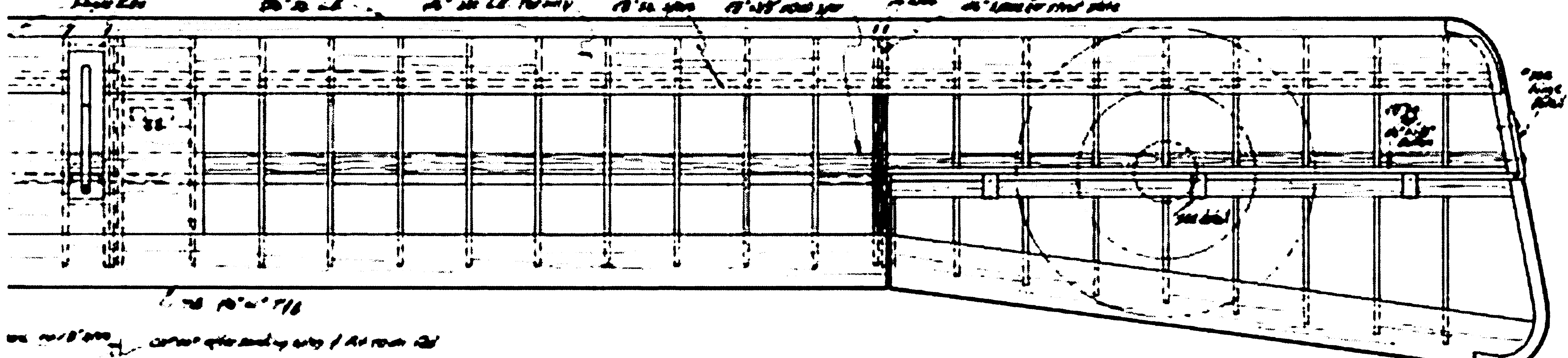
Designed / Drawn by
 Fred Hoffer

MODEL BUILDER
 magazine
 Plan No: 12831-A

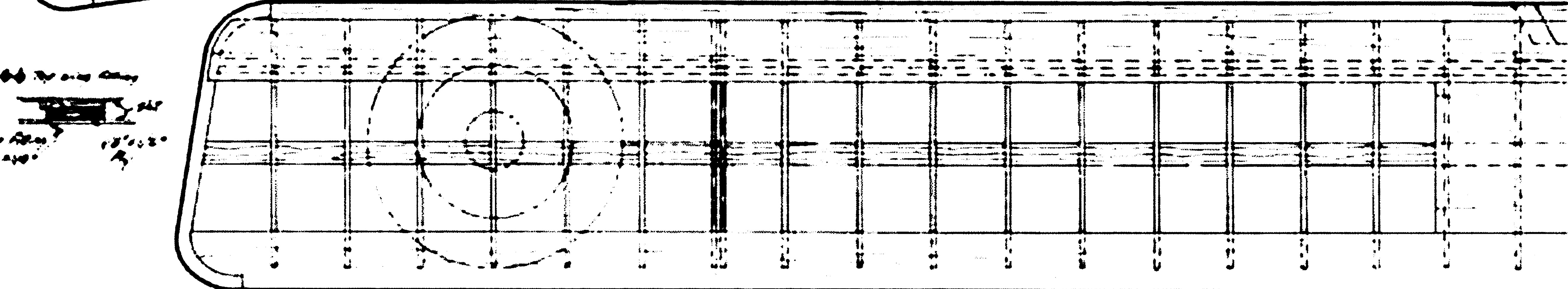
Span	57"
Length	37 1/2"
Drawn	1/16" scale



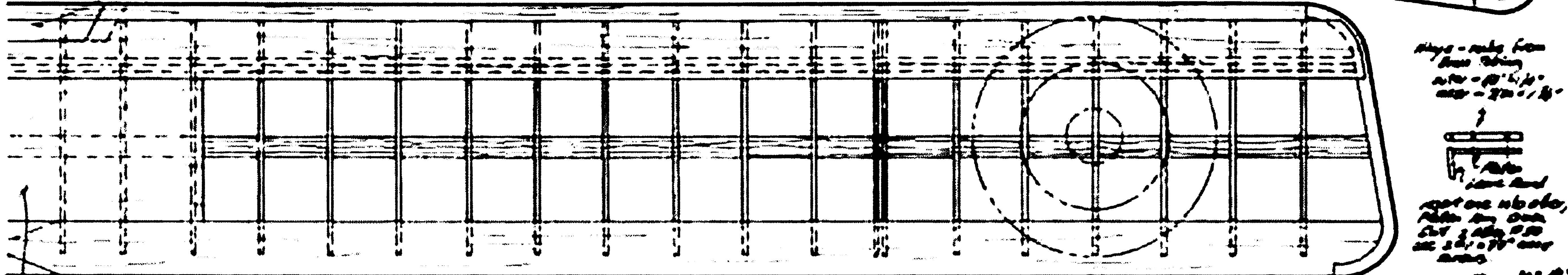
Top view of fuselage (continued) 1-10" x 10" x 10" 1-10" x 10" x 10" 1-10" x 10" x 10"



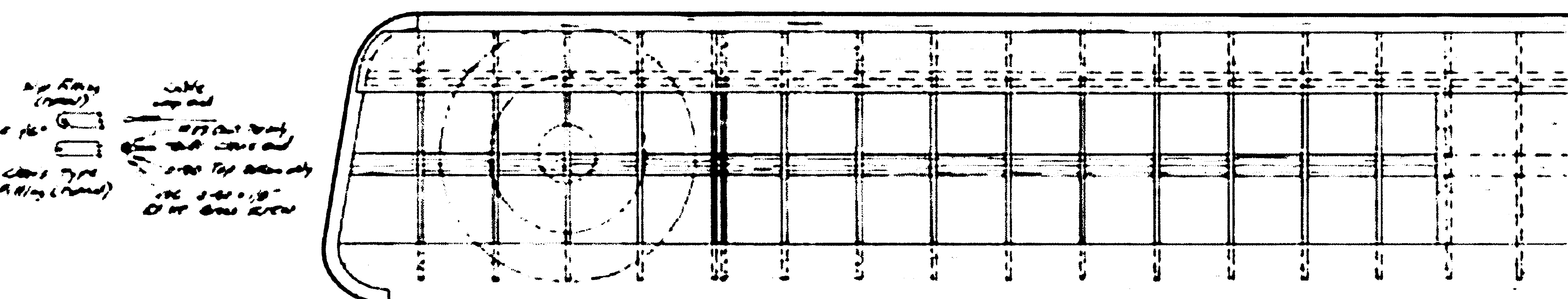
Top view of fuselage (continued) 1-10" x 10" x 10" 1-10" x 10" x 10" 1-10" x 10" x 10"



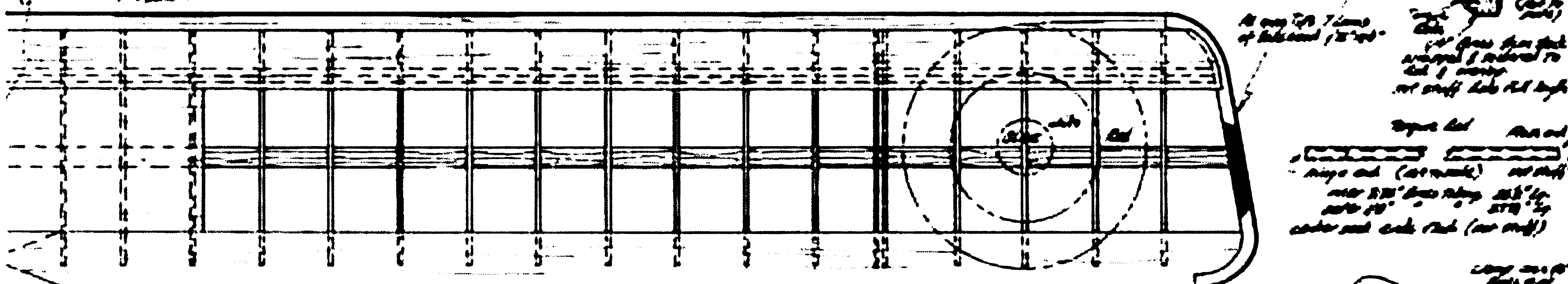
Top view of fuselage (continued) 1-10" x 10" x 10" 1-10" x 10" x 10" 1-10" x 10" x 10"



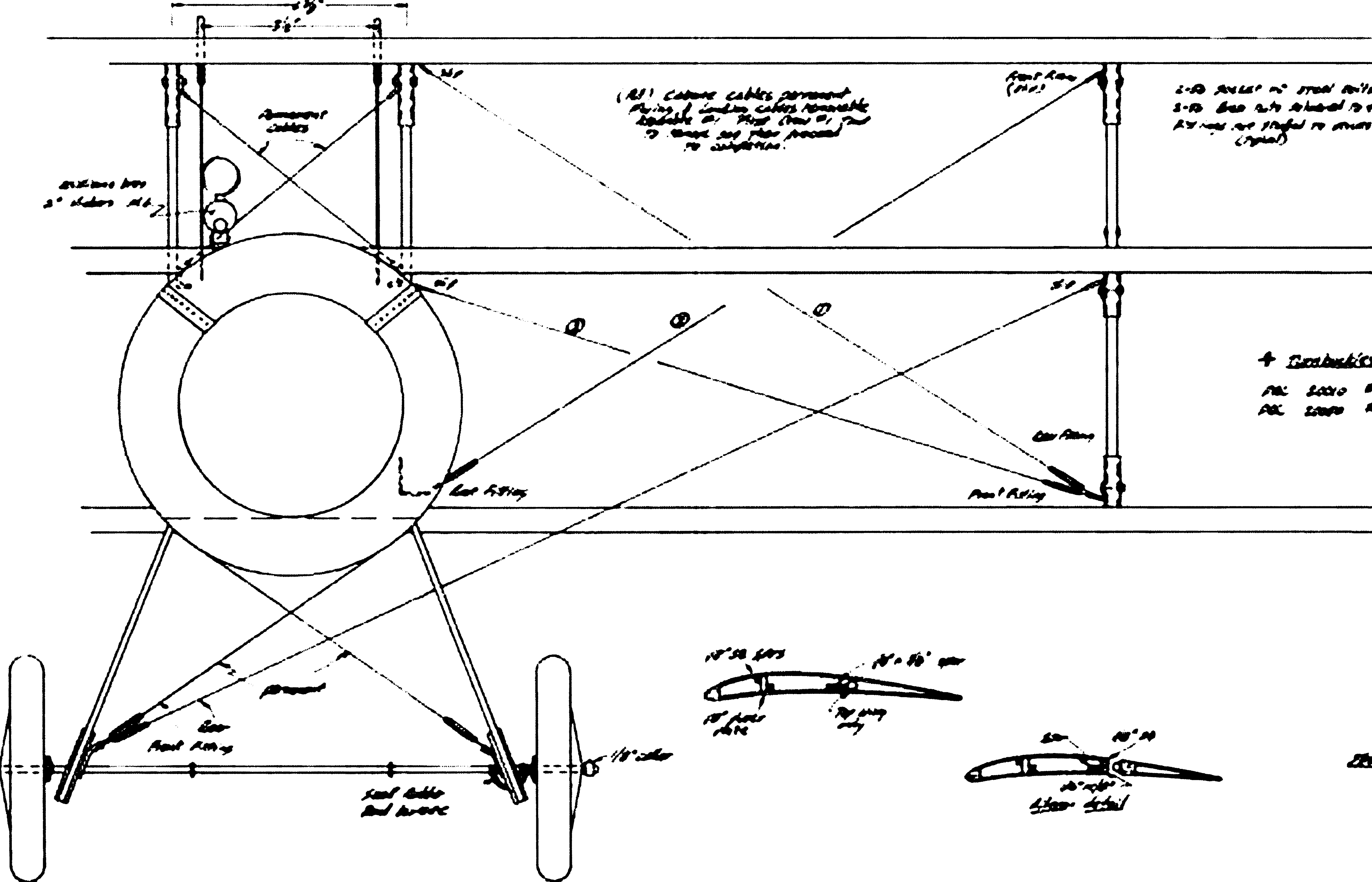
Top view of fuselage (continued) 1-10" x 10" x 10" 1-10" x 10" x 10" 1-10" x 10" x 10"



Top view of fuselage (continued) 1-10" x 10" x 10" 1-10" x 10" x 10" 1-10" x 10" x 10"



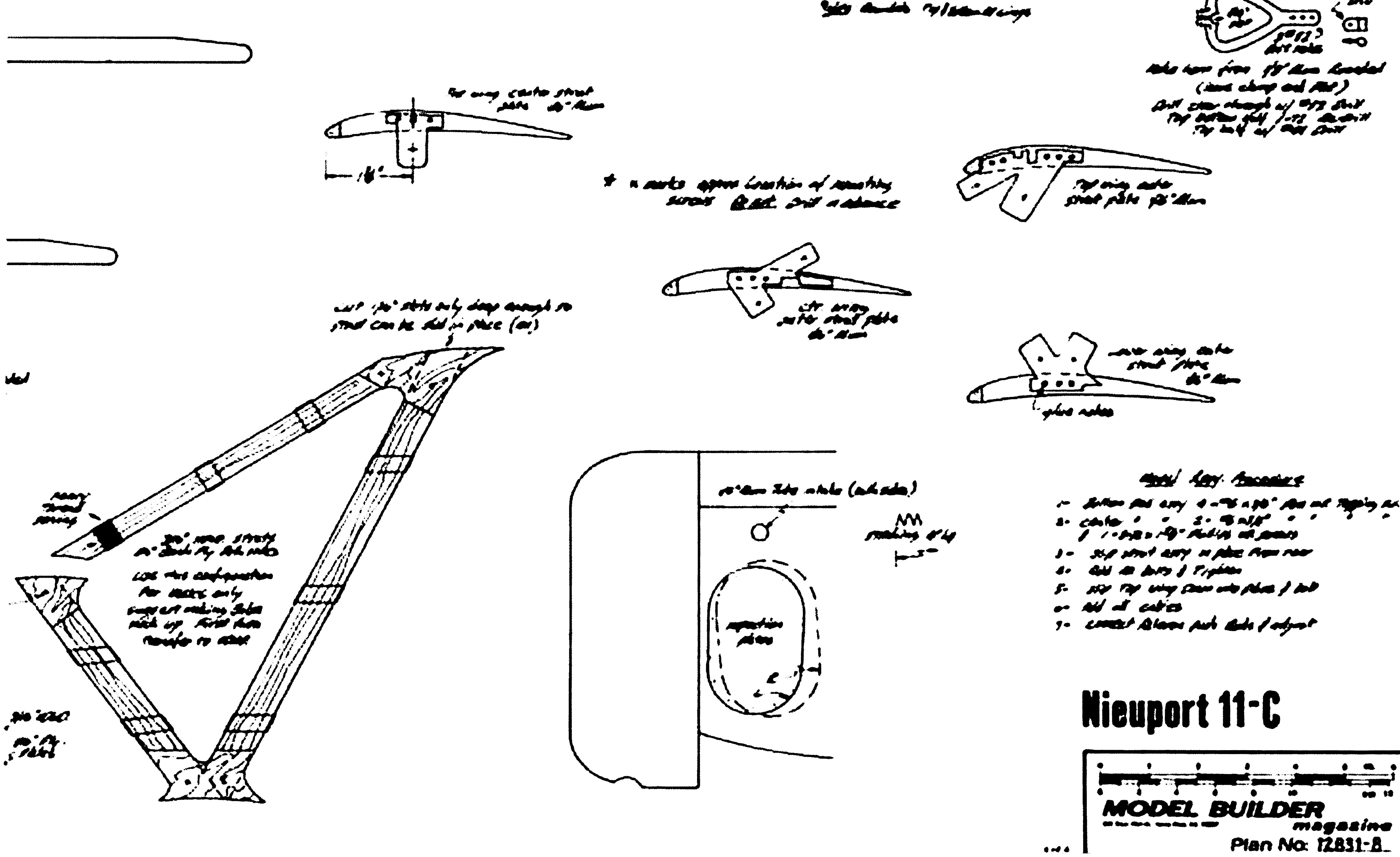
Top view of fuselage (continued) 1-10" x 10" x 10" 1-10" x 10" x 10" 1-10" x 10" x 10"



(A) Landing cables permanent. (B) Landing cables removable. (C) Spring down. (D) Spring up. (E) Spring down. (F) Spring up.

1-10" x 10" x 10" 2-10" x 10" x 10" 3-10" x 10" x 10" 4-10" x 10" x 10"

4 Landing cables. Part 1000. Part 1000.



1-10" x 10" x 10" 2-10" x 10" x 10" 3-10" x 10" x 10" 4-10" x 10" x 10"

4 Landing cables. Part 1000. Part 1000.

1-10" x 10" x 10" 2-10" x 10" x 10" 3-10" x 10" x 10" 4-10" x 10" x 10"

4 Landing cables. Part 1000. Part 1000.

- 1- 10" x 10" x 10" Part 1000. Part 1000.
- 2- 10" x 10" x 10" Part 1000. Part 1000.
- 3- 10" x 10" x 10" Part 1000. Part 1000.
- 4- 10" x 10" x 10" Part 1000. Part 1000.
- 5- 10" x 10" x 10" Part 1000. Part 1000.
- 6- 10" x 10" x 10" Part 1000. Part 1000.
- 7- 10" x 10" x 10" Part 1000. Part 1000.

Nieuport 11-C