

\*NOTE: C.G. 1/2" FORWARD OF FRONT OF SPAR W/ WHEELS DOWN & TRAILS EMPTY

\*NOTE: FIN & RUDDER SHEETED W/ 1/16" SHT. L&R

\*NOTE: LEFT SIDE PLANKING ON FUSE. & ENGINE PODS NOT SHOWN IN THESE VIEWS.

\*NOTE: ENGINE PODS & FUSE. ARE ENTIRELY PLANKED W/ 3/32" SHT.

\*NOTE: COVER FUSE & POD W/ 3/4 OZ. GLASS CLOTH & BEEN BEFORE CUTTING OUT WING HOLES. ALSO USE EXTRA LAYERS OF CLOTH IN AREA OF RETRACT DOOR BEFORE CUTTING OUT.

\*NOTE: FUSE & ENGINE PODS TOP PLANKING NOT SHOWN IN THESE VIEWS

\*NOTE: ALL PARTS Balsa UNLESS OTHERWISE NOTED

# LOCKHEED P-38L LIGHTNING

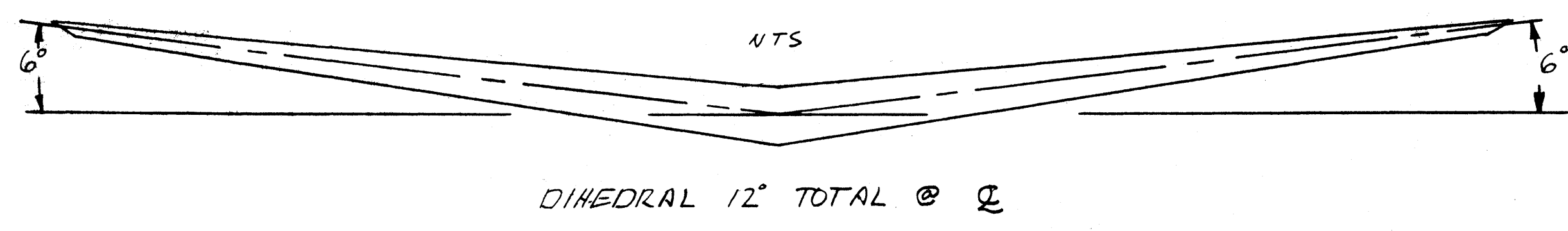
SCALE 1,8"=1'

DESIGNED & DRAWN BY: COL. ART JOHNSON  
TRACED FOR M.S. BY: SA. PATERSAN

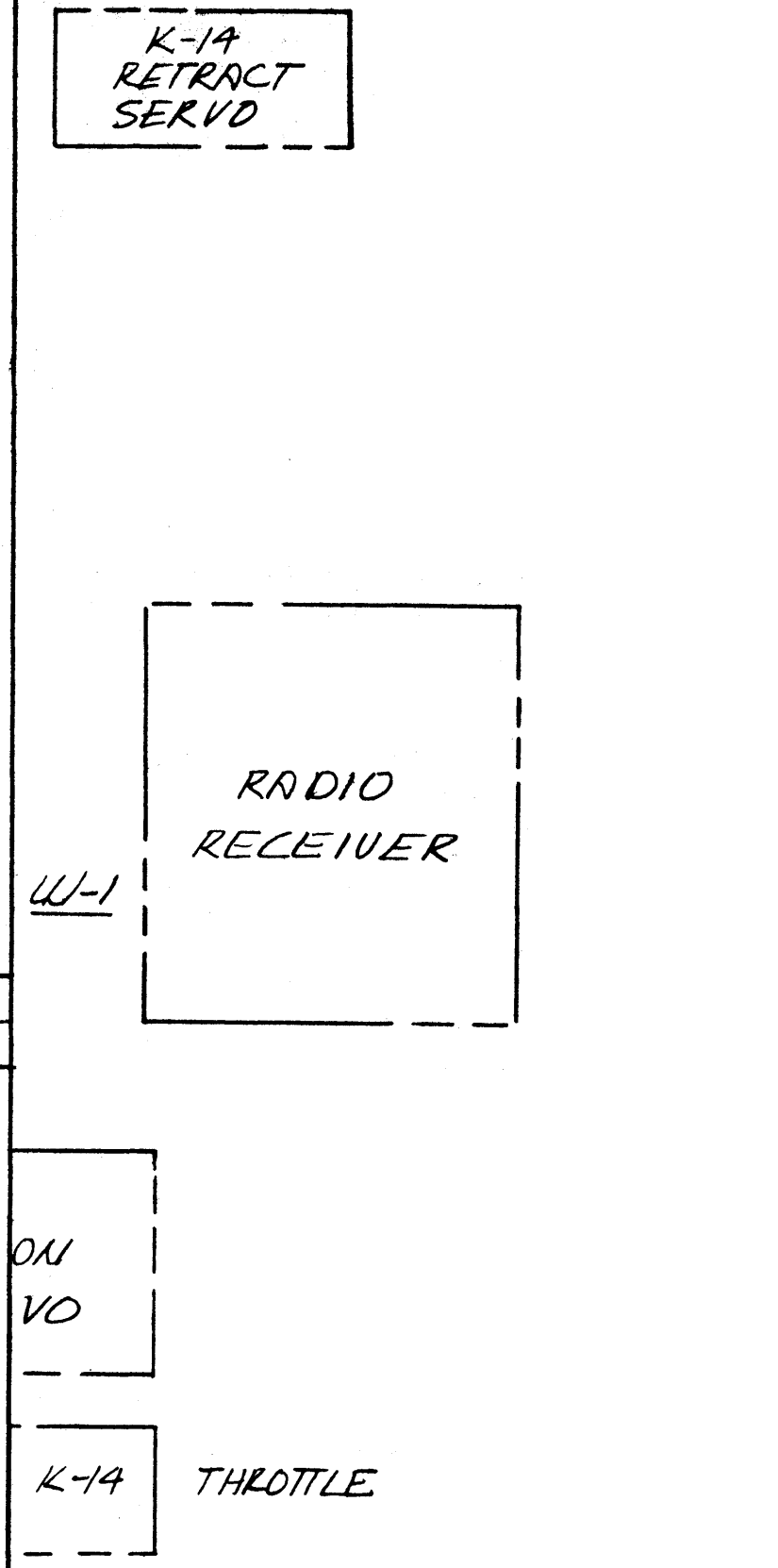
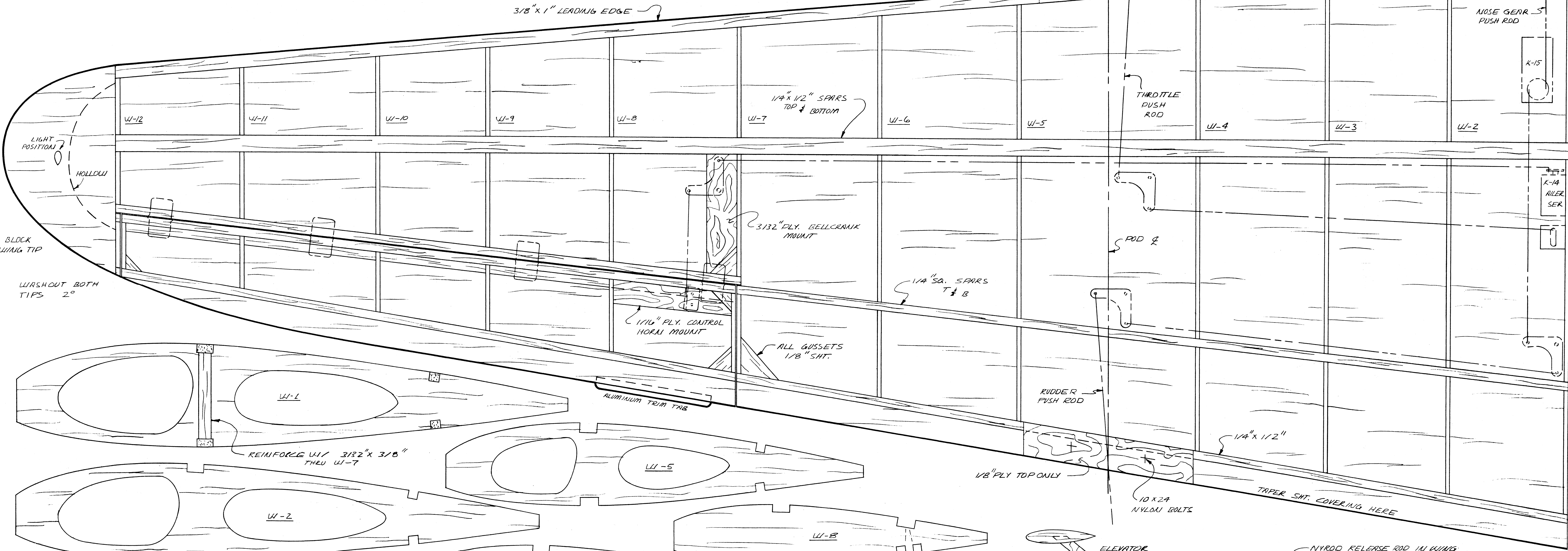
SPRAG 99"  
WEIGHT 12 LBS.  
LENGTH APPROX. 63-62"

0 1 2 3 4 5 6  
inches

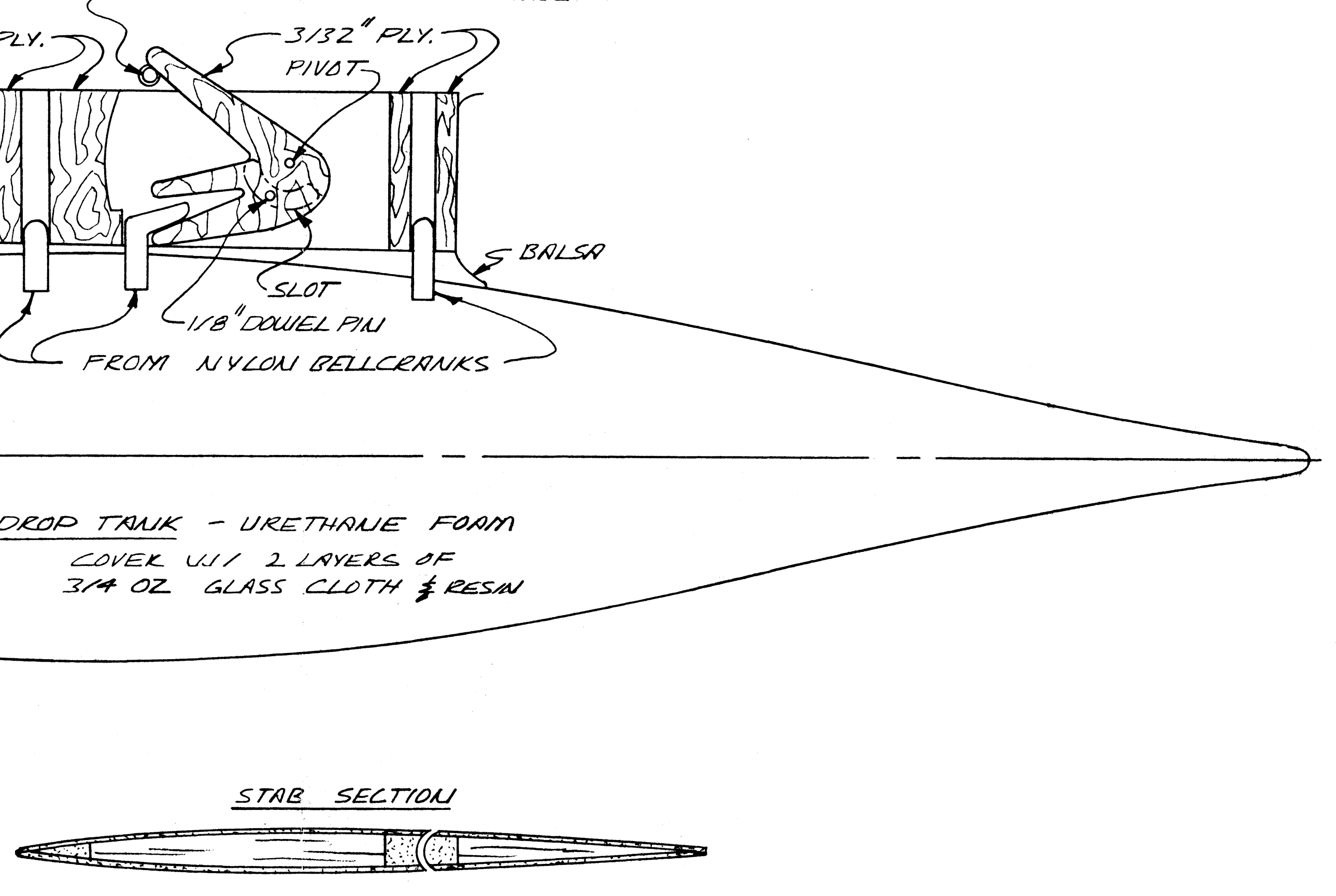
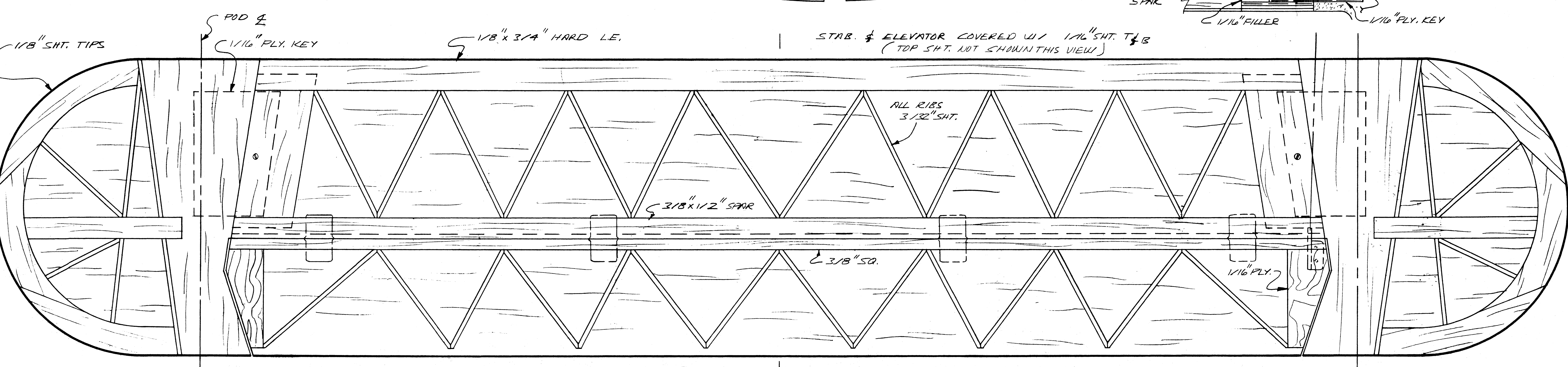
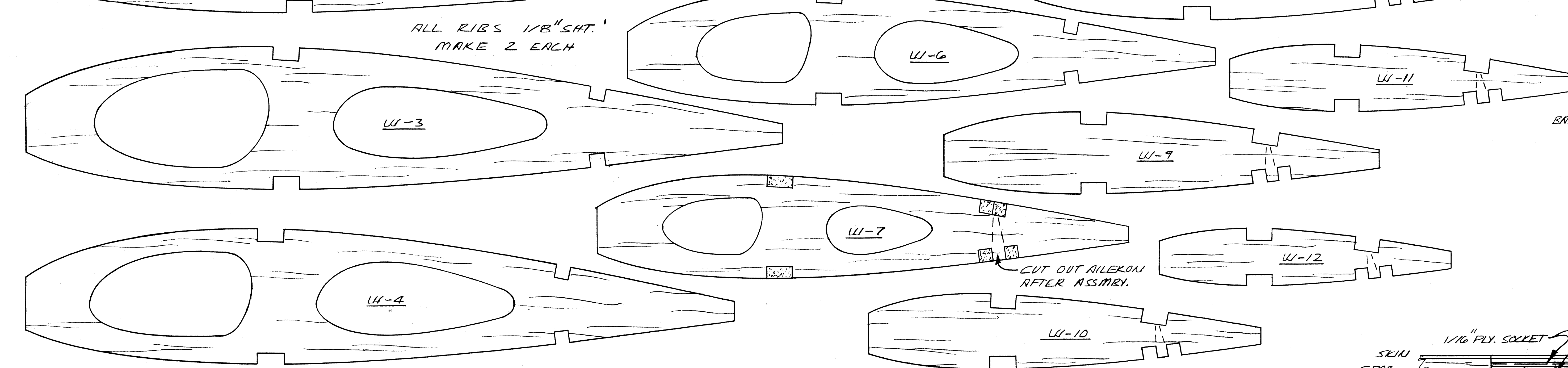
**MODEL BUILDER** magazine  
621 W. HAUETBOUTH ST.  
COSTA MESA CALIF. 92627  
Plan No: 6781-A



\*NOTE: WING TOP SHT. NOT SHOWN THIS VIEW  
WING SHEETED T 1/8 W/ LIGHT 3/32" SHT.



\*NOTE: COVER WING W/ 3/4 OZ. GLASS CLOTH & RESIN. ALSO REINFORCE THE DIBEDRAL JOINT W/ FIBERGLASS TAPE.



COL. ART JOHNSON'S  
**P-38L**

0 1 2 3 4 5 6  
Inches

**MODEL BUILDER** magazine  
621 W. NINETEENTH ST.  
COSTA MESA, CALIF. 92627

2 OF 2

Plan No: 6781-E