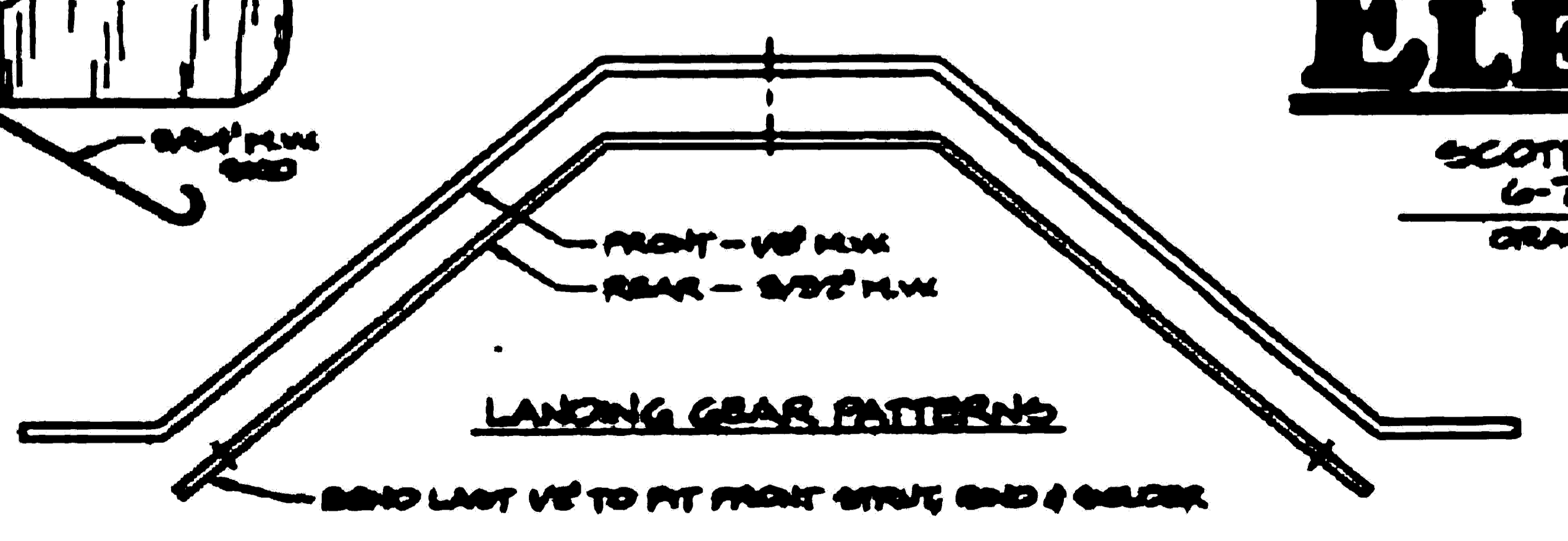
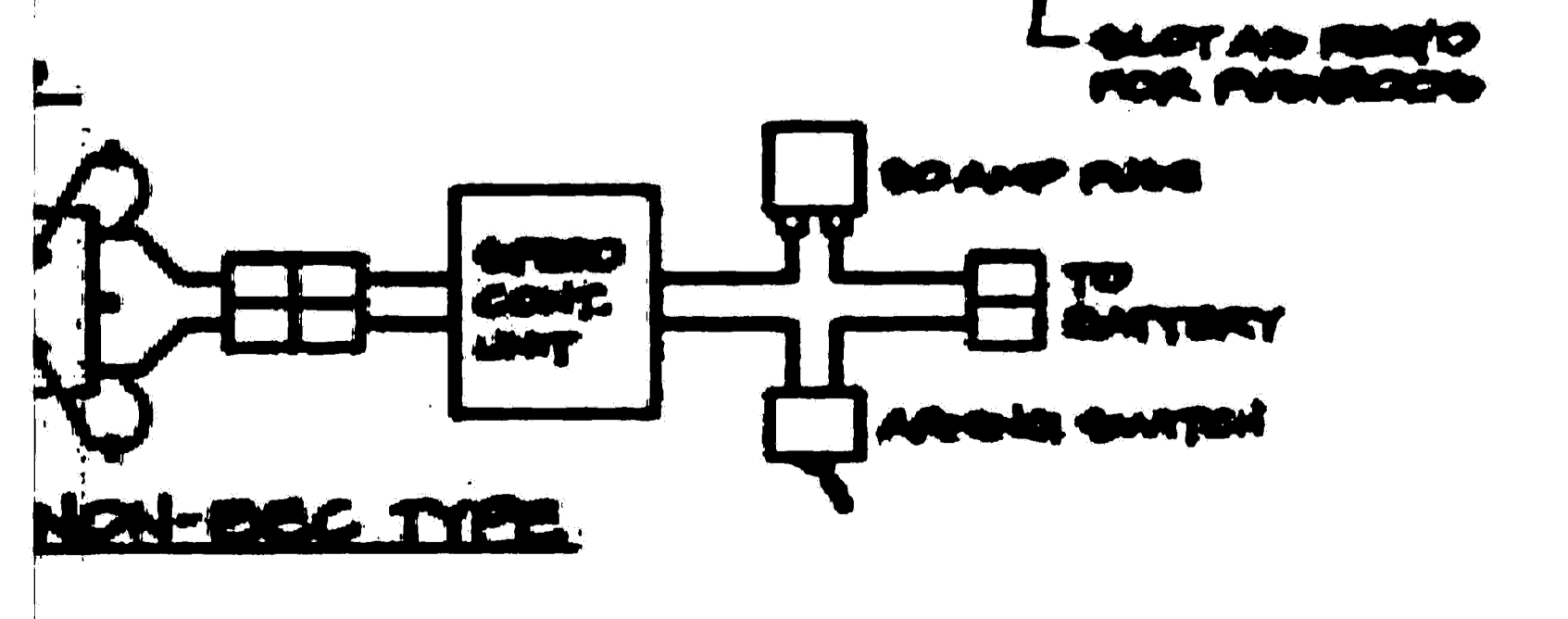
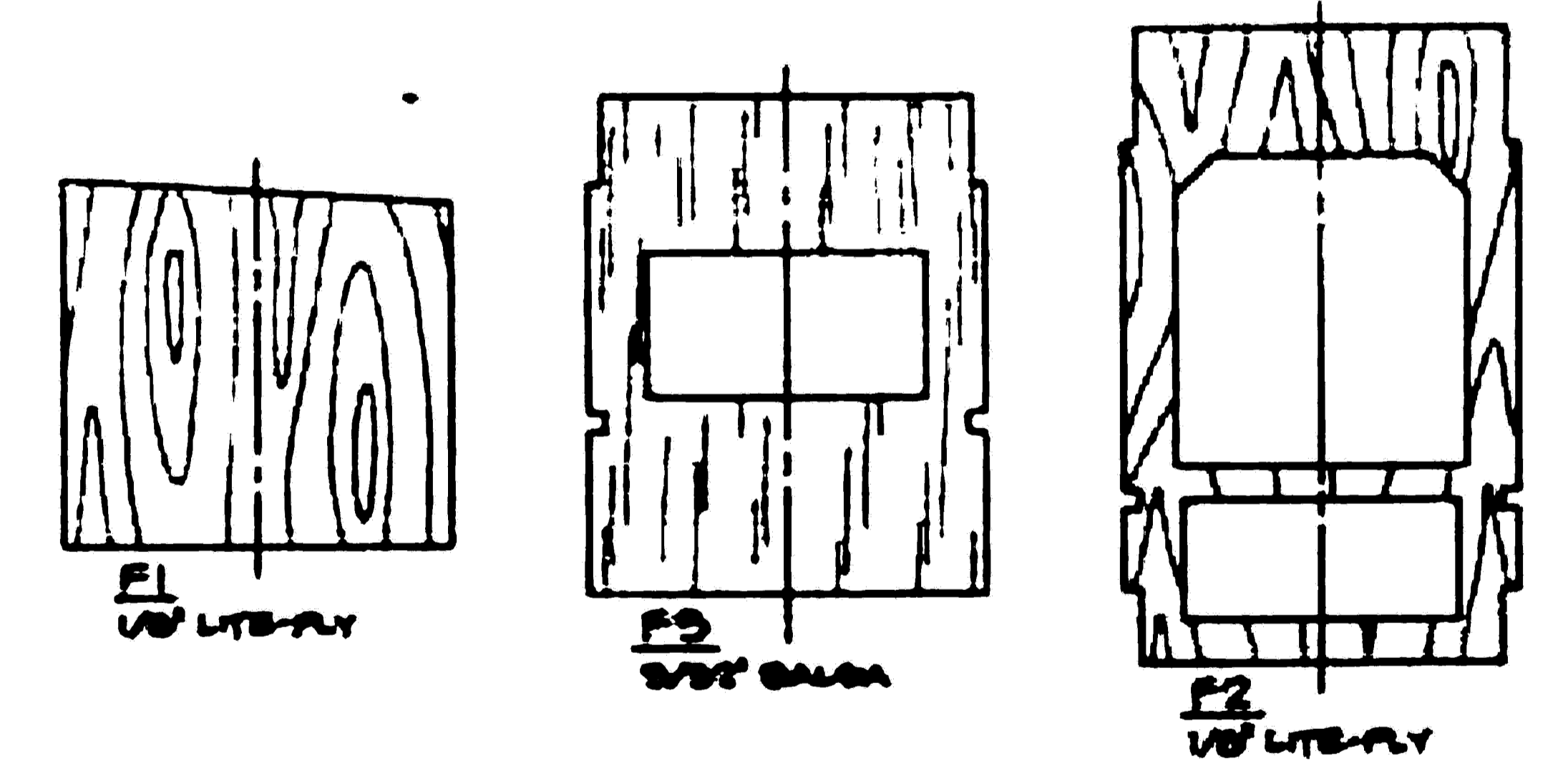
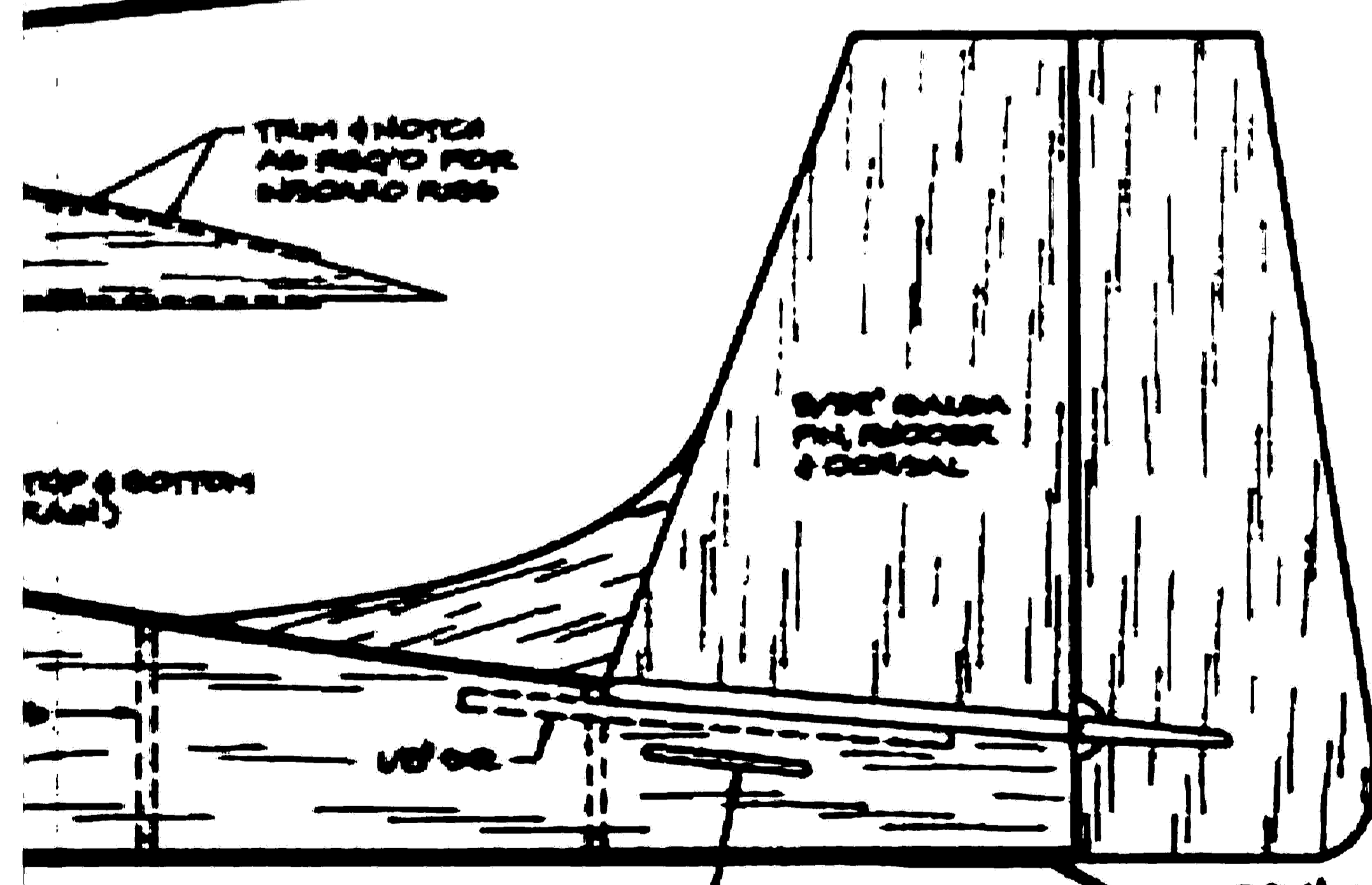
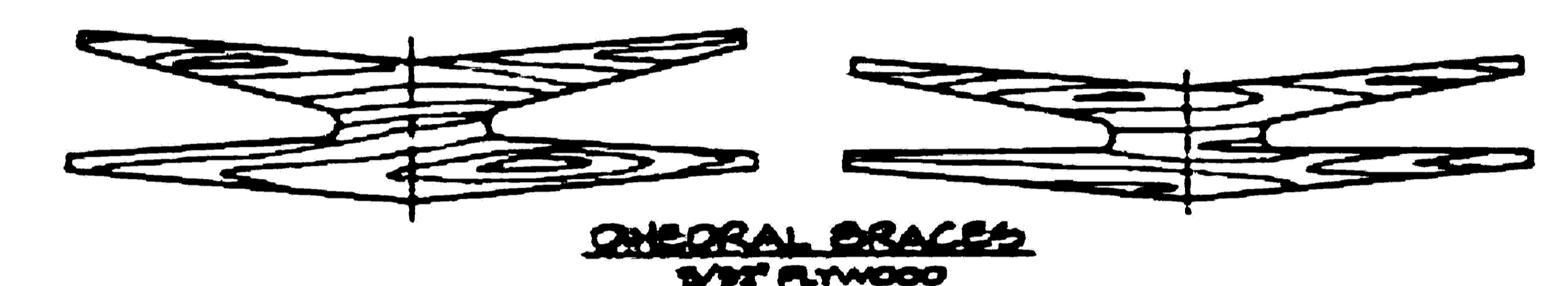
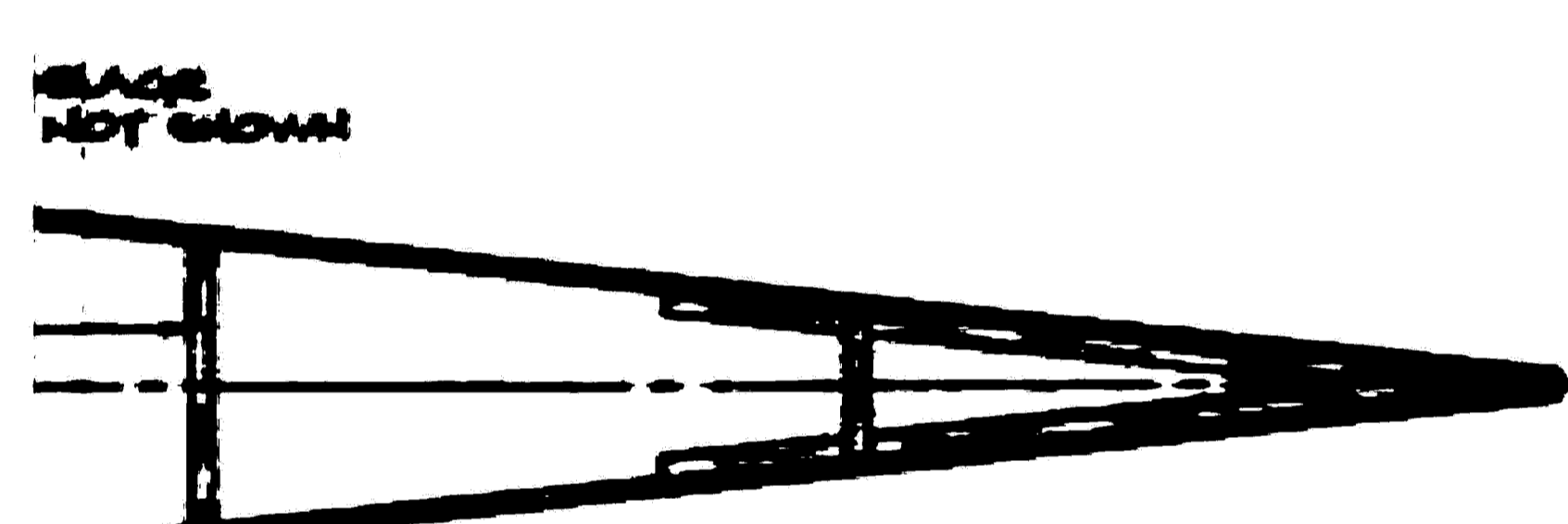


**SPECS:**  
 WINGSPAN - 40 IN.  
 WING AREA - 346 SQ. IN.  
 FLYING WEIGHT - 40-45 OZ.  
 OVERALL LENGTH - 95-1/4 IN.



# ELECTRIC SCOUT

SCOTT HARTMAN'S SPORT RC DESIGN FOR  
 6-7 CELL ELECTRIC POWER SYSTEMS  
 DRAWN FOR MODEL BUILDER BY PILL BERNHARDT

**MODEL BUILDER**  
 magazine  
 Plan No. 1341