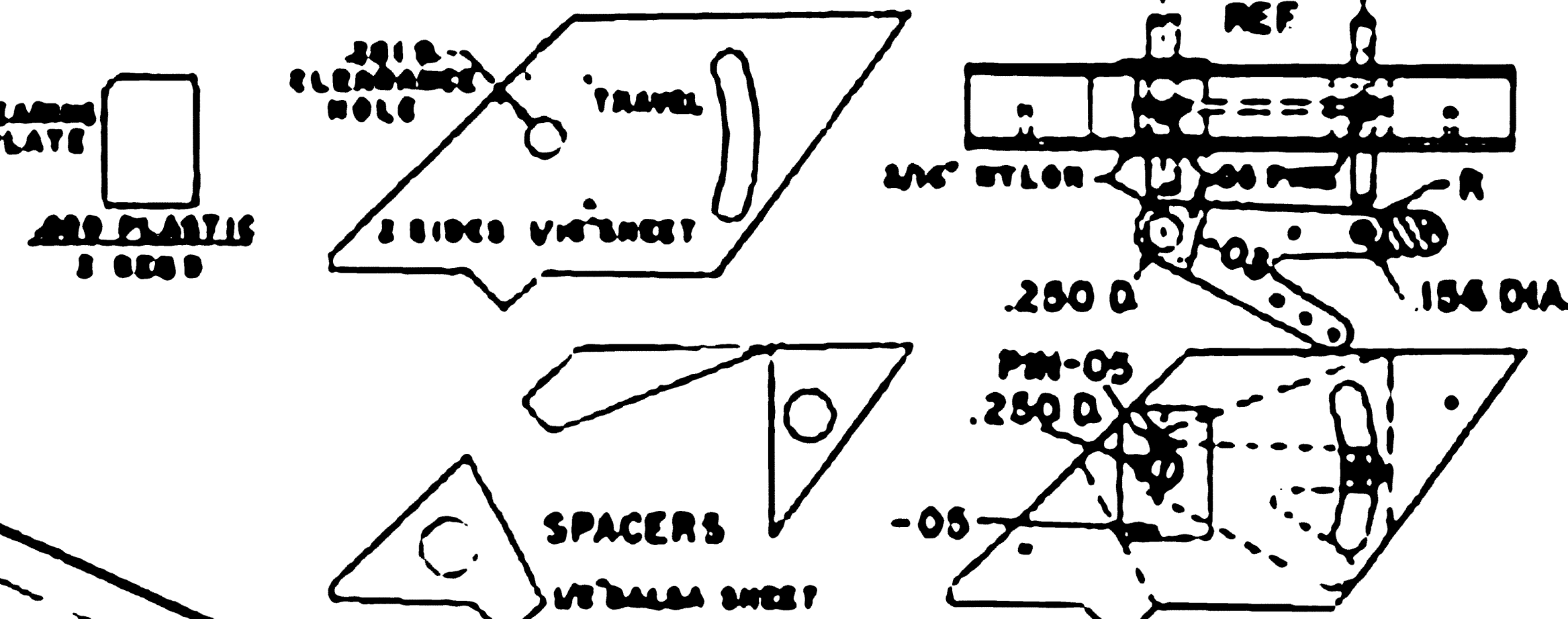
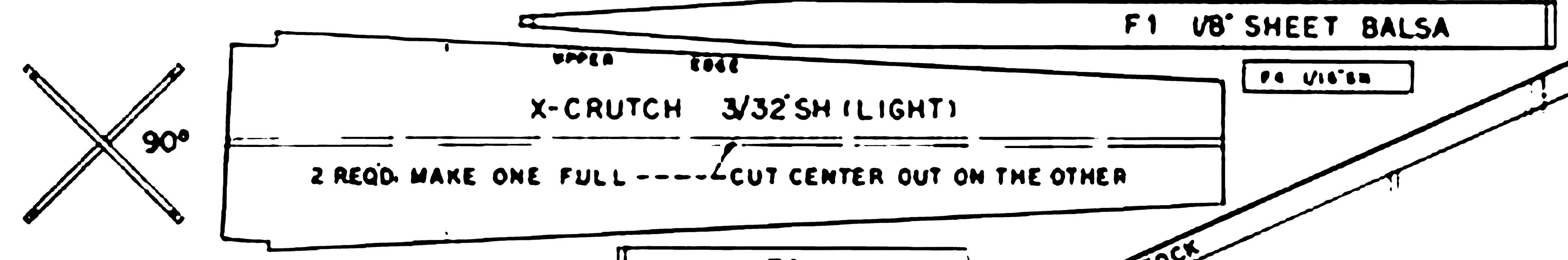


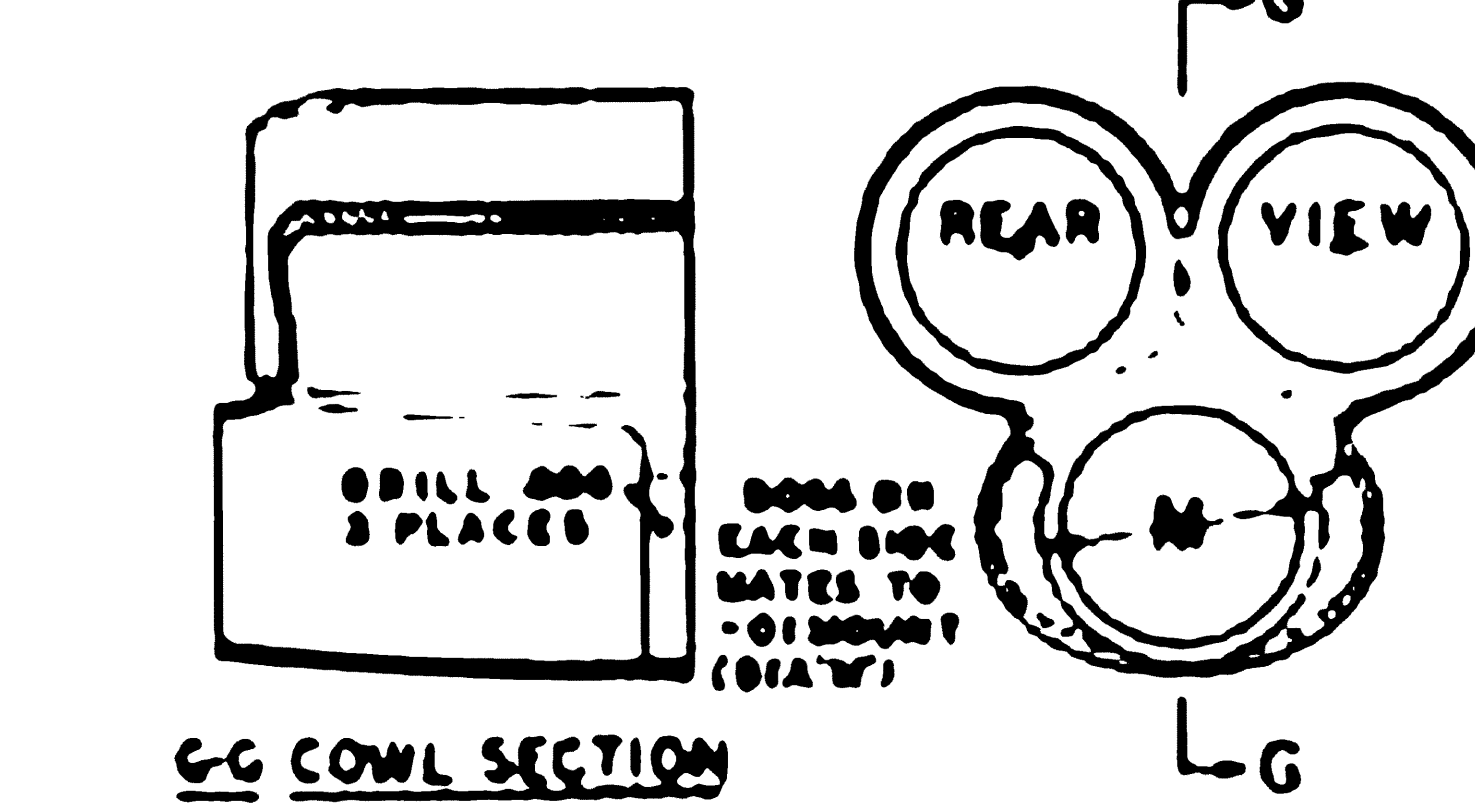
**STABILATOR PIVOT BOX ASSEMBLY DETAILS**  
 CUT OUT SIDES, SPACERS & PLATES. MODIFY BELLCRANK-03 BELOW  
 CEMENT SPACERS BETWEEN SIDES TO MAKE BOX.  
 EPOXY & PIN BEARING PLATES ON DRILL PRECISE  
 250 DIA HOLE VERTICAL TO BOX SIDES, THRU UNIT



MOCK UP THE UNIT DRILL .046 D FOR PINS THRU BELLCRANK AND ALUM TUBES. REMOVE BELLCRANK & TUBES (INSTALL AFTER POD IS BUILT) CEMENT BOX ASSY INTO FIN FRAME (SHT 1)



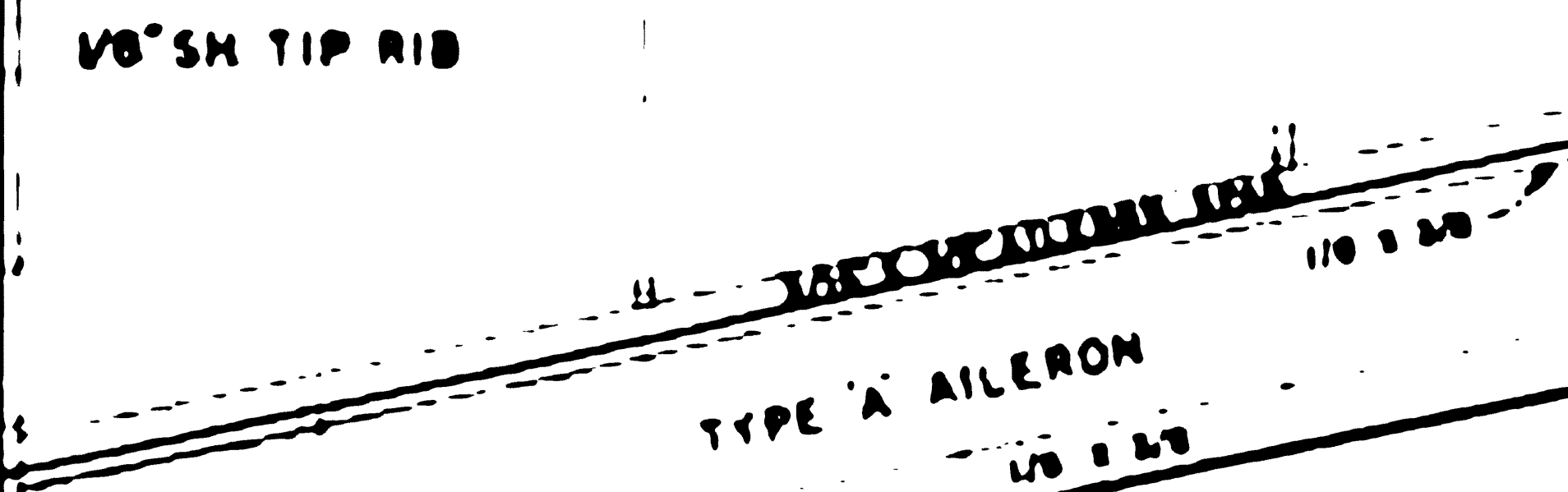
FRONT VIEW-AFTER JOINING



**ENGINE COWL (SEE SH 1 ALSO)**  
 BUILD UPPER BACCELLS AND LOWER COWL. JOIN AS SHOWN AND FILLET EXTERIOR JUNCTIONS. CUT AWAY INTERIOR TO FIT OVER ENGINE AND MUFFLER. DRILL STAP ENGINE MOUNT FOR P-50 SCREWS - 3 PLACES. CUT HOLES FOR METAL VALVE AND GLOW PLUG CLIP.

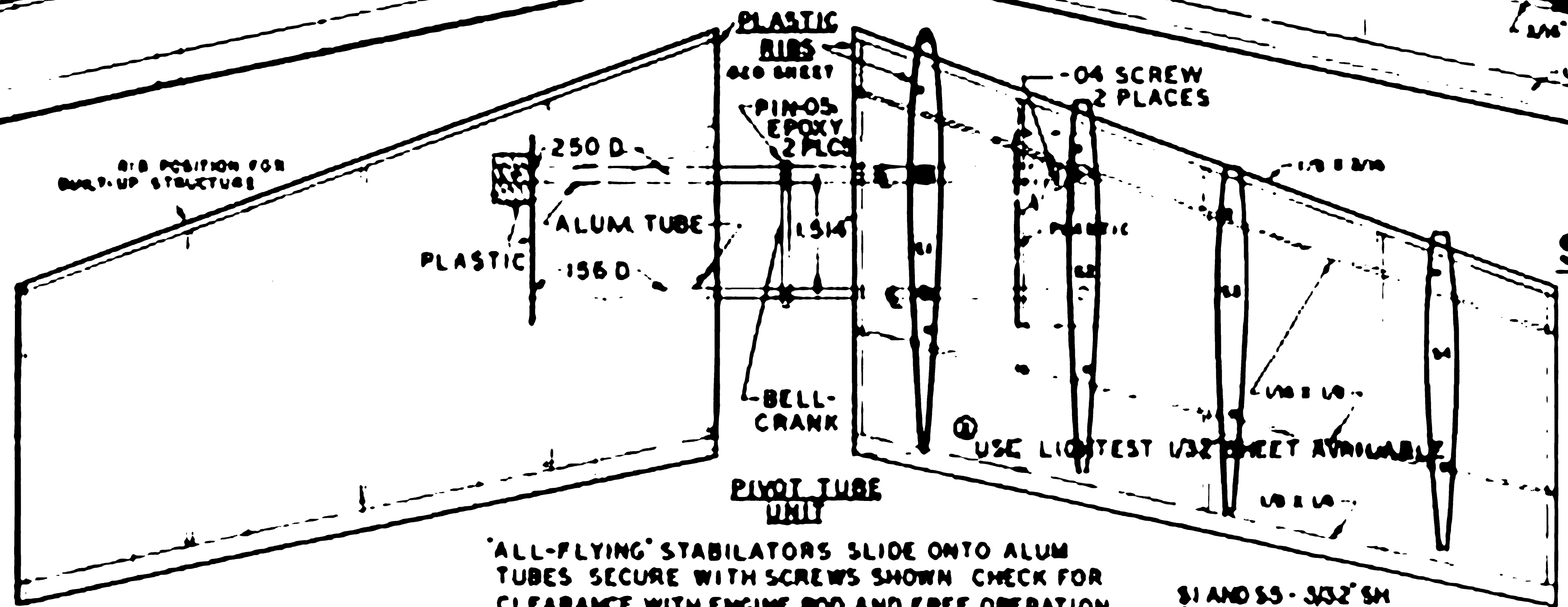
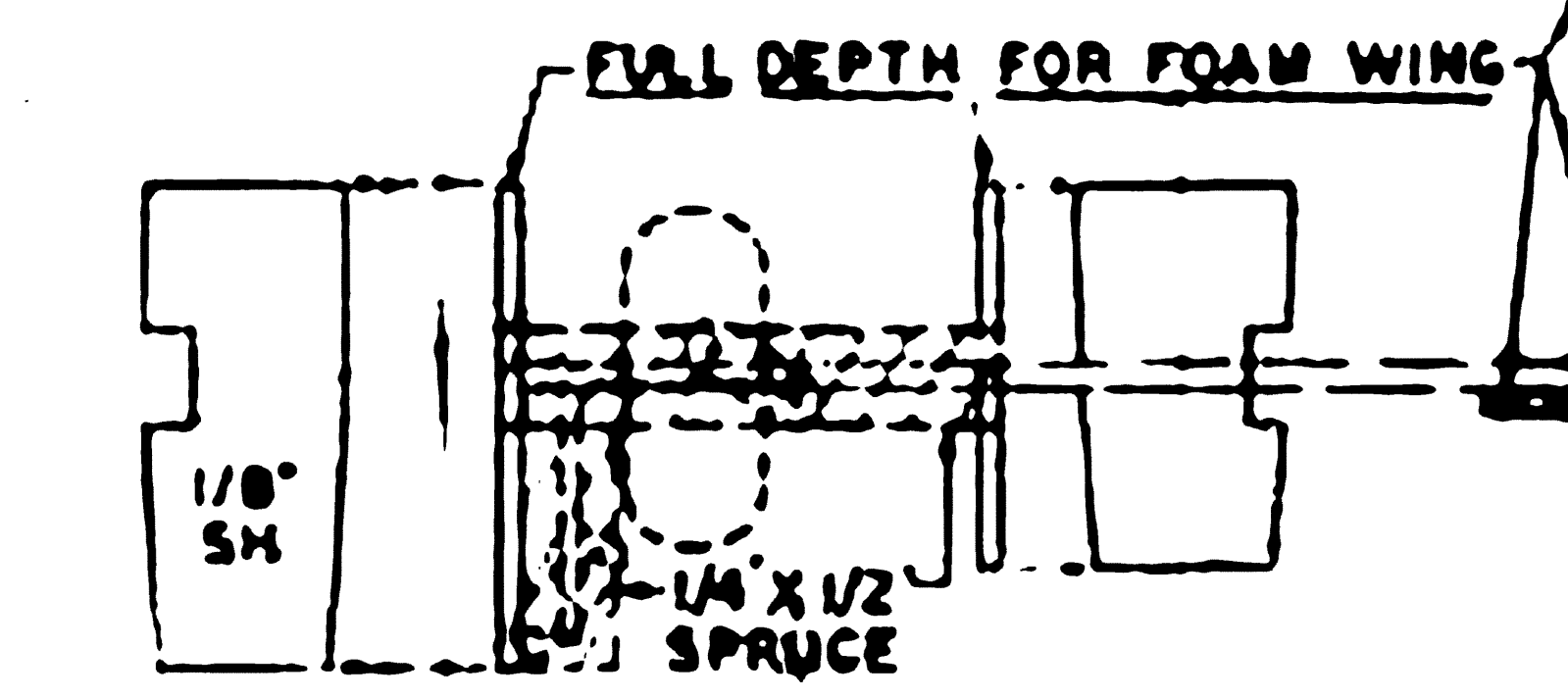
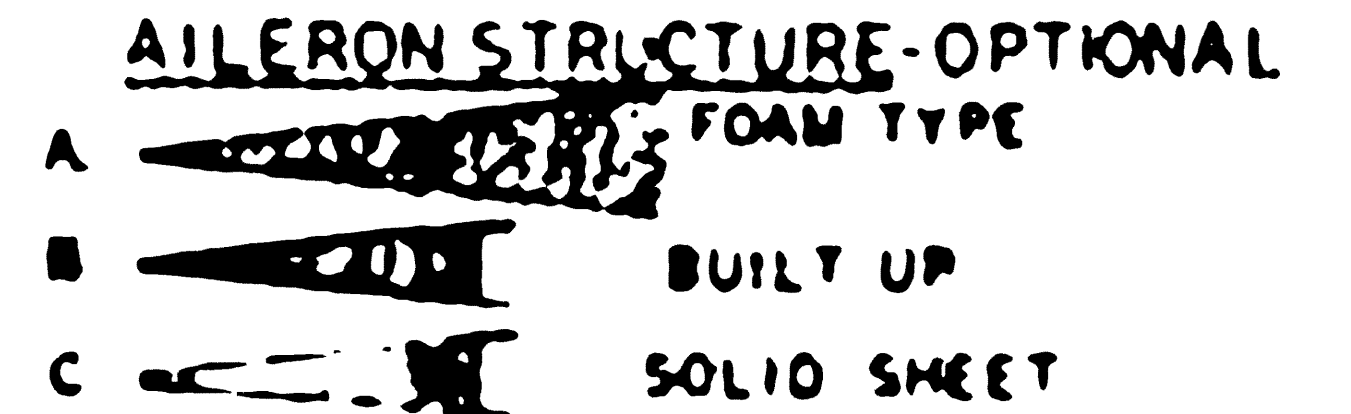


-06 TAPE-SEALS BUTT JOINTS IN METAL FOIL COVERING SECTIONS



**FOAM CONSTRUCTION**

1/32 SHEET Balsa COVERING USE END RIBS W1 AND W8 AS PATTERNS FOR SHAPING WING. GLUE 1/8 SHEET TIP RIBS W8 ON ATTACH LEADING EDGE & AILERON SPAR



**BUILT UP STRUCTURE**

DESIGNED FOR 1/32 SHEET Balsa SKIN

"ALL-FLYING" STABILATORS SLIDE ONTO ALUM TUBES SECURE WITH SCREWS SHOWN CHECK FOR CLEARANCE WITH ENGINE POD AND FREE OPERATION

W1 AND W8 - 3/32 SH 5-2,3,4 - 1/16 SH

- |     |                |                                       |
|-----|----------------|---------------------------------------|
| 07  | BALL LINKS     | B-BOLT ON, T-THEADED, R-RIVET, DU-BRO |
| 06  | TAPE, 1/8 INCH | CHROME METALLIC, PARATONE, ZIRALINE   |
| 05  | KEYING PIN     | USE .04 DIA STOCK, SIG PINS 2'LS      |
| 04  | WOOD SCREW     | NO 0-3/8 LG, PERFECT #101             |
| 03  | BELLCRANK      | 30° VARIABLE WILLIAMS BROS            |
| 02  | FUEL TANK      | R-2 20Z SULLIVAN                      |
| 01  | ENGINE MOUNT   | KM-09, KRAFT MAYES                    |
| VEN | DESCRIPTION    | SPECS AND SOURCE                      |

**HALL TURBOLINER CLIPPER AMERICANUS**  
 DESIGN & DRAWING BY ARTHUR L HALL 9-75