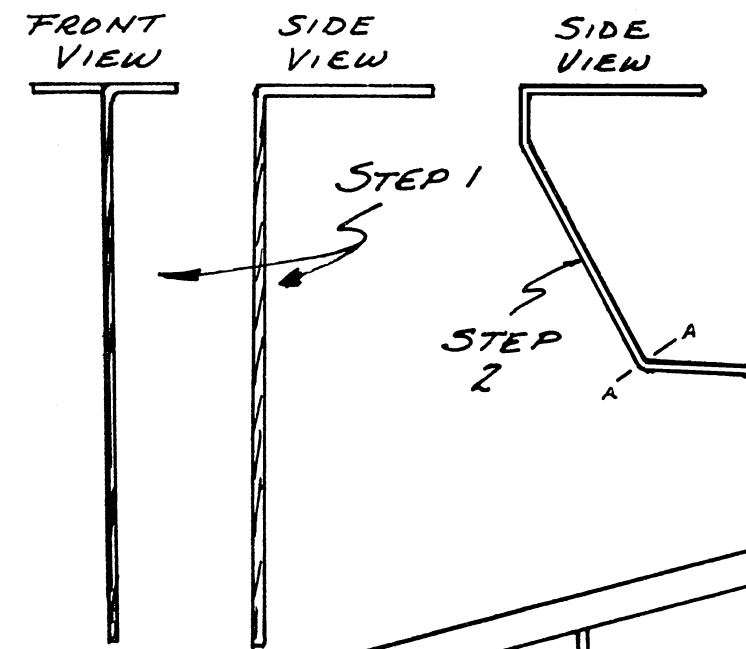
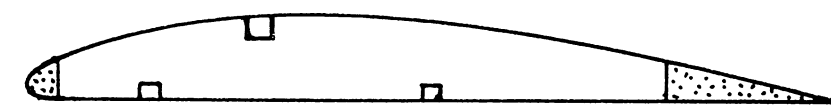
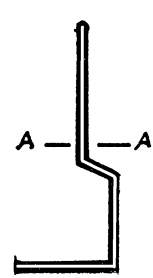


SET LANDING GEAR INTO FUSELAGE AFTER CARVING AND COMPLETE AFTER GLUE DRY.

**NOSE GEAR**

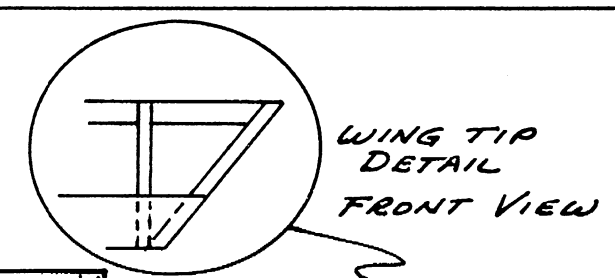
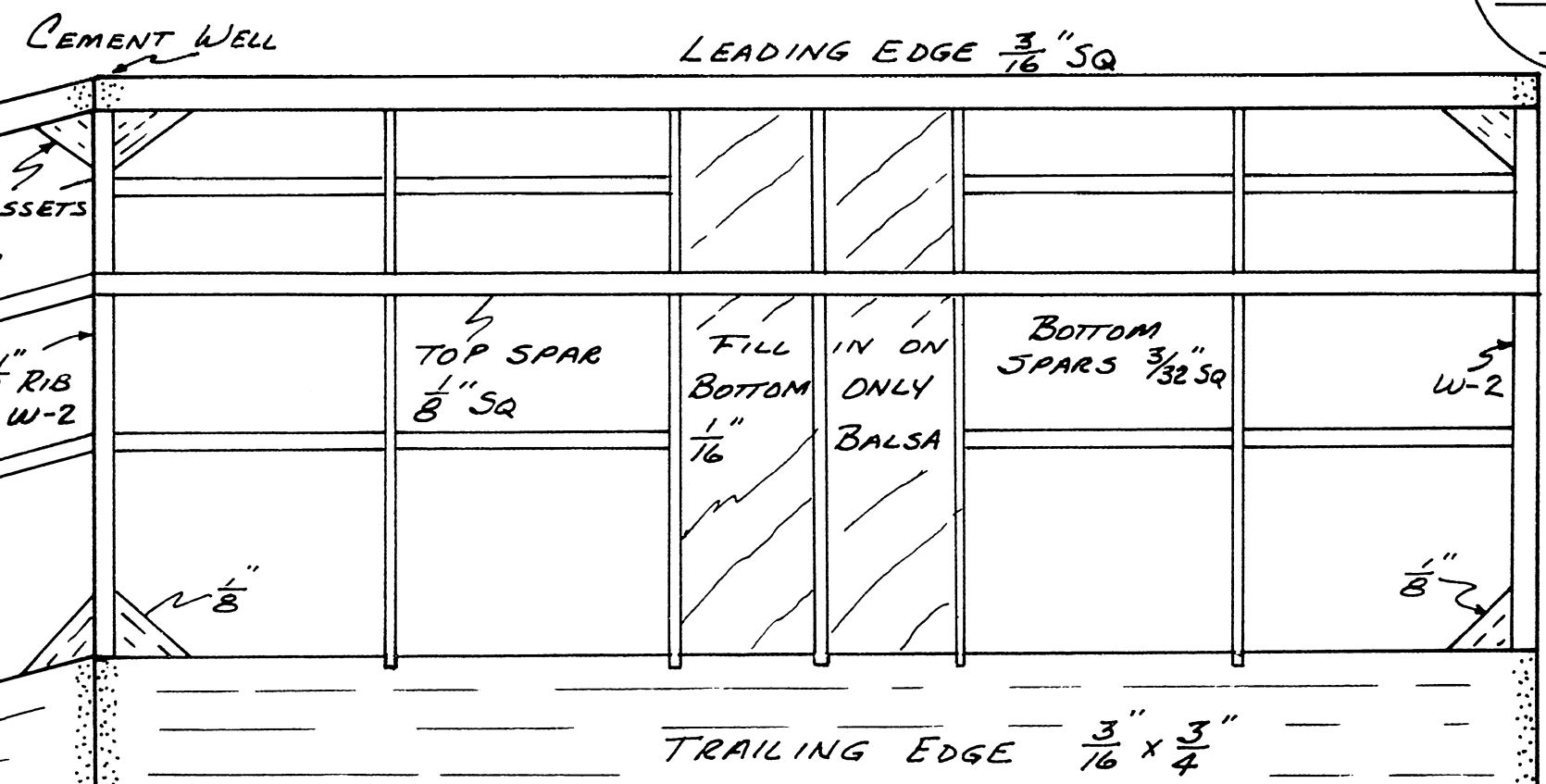
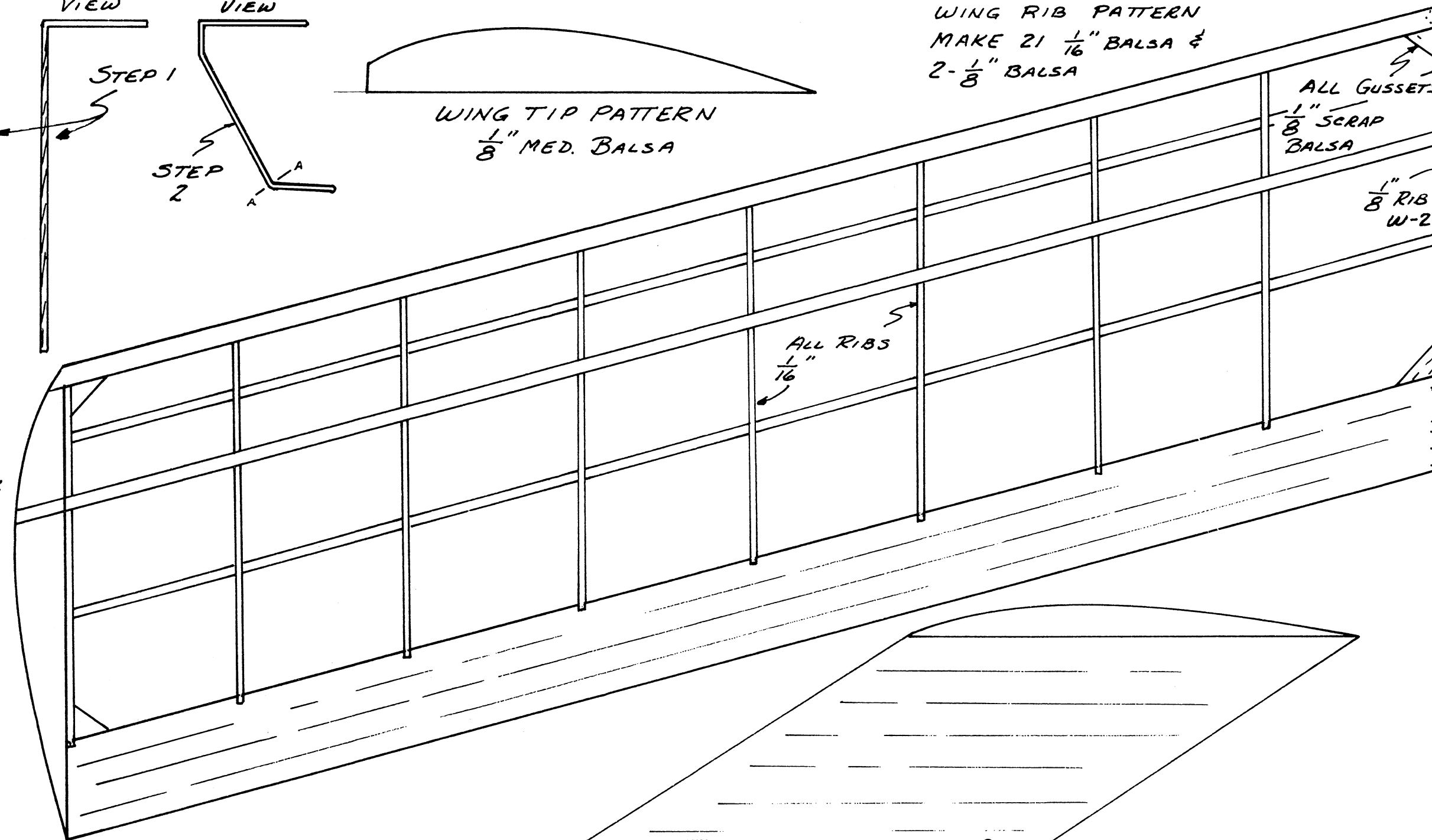


STEP 2  
TOP VIEW  
WHEEL FORK

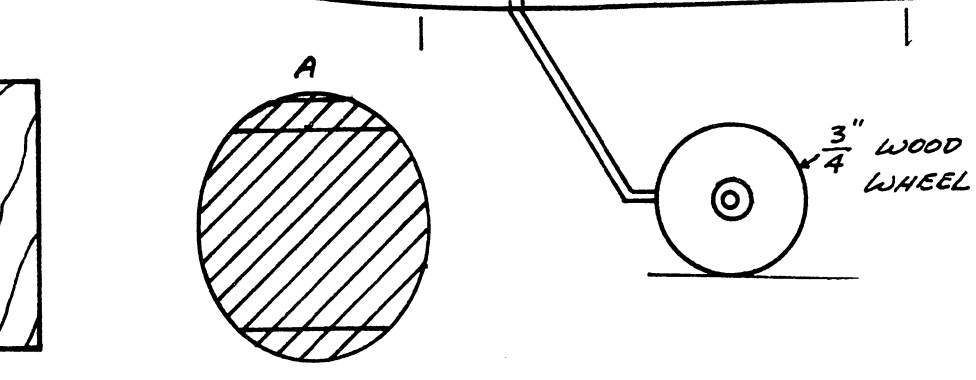
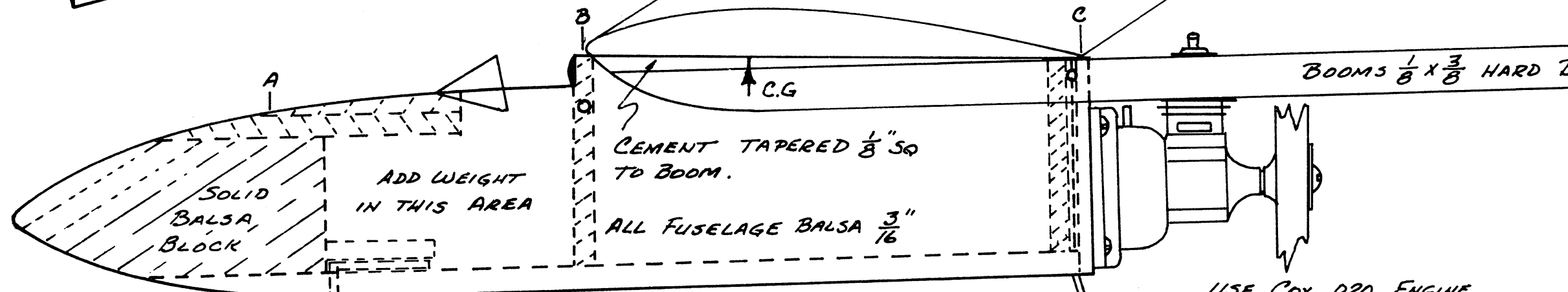


WING RIB PATTERN  
MAKE 21  $\frac{1}{16}$ " Balsa &  
2- $\frac{1}{8}$ " Balsa

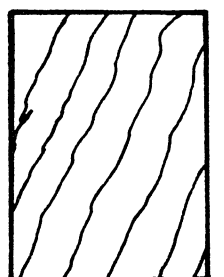
WING TIP PATTERN  
 $\frac{1}{8}$ " MED. Balsa



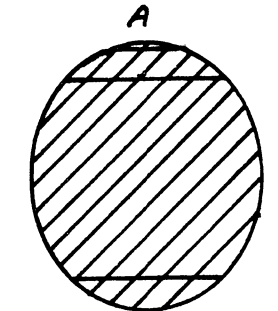
WING TIP  
DETAIL  
FRONT VIEW



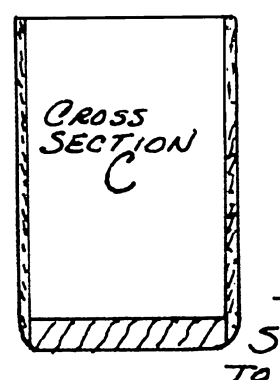
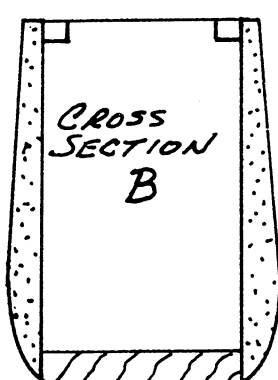
ADD WEIGHT  
IN THIS AREA



BULKHEAD  
FOR B & C  
POSITIONS

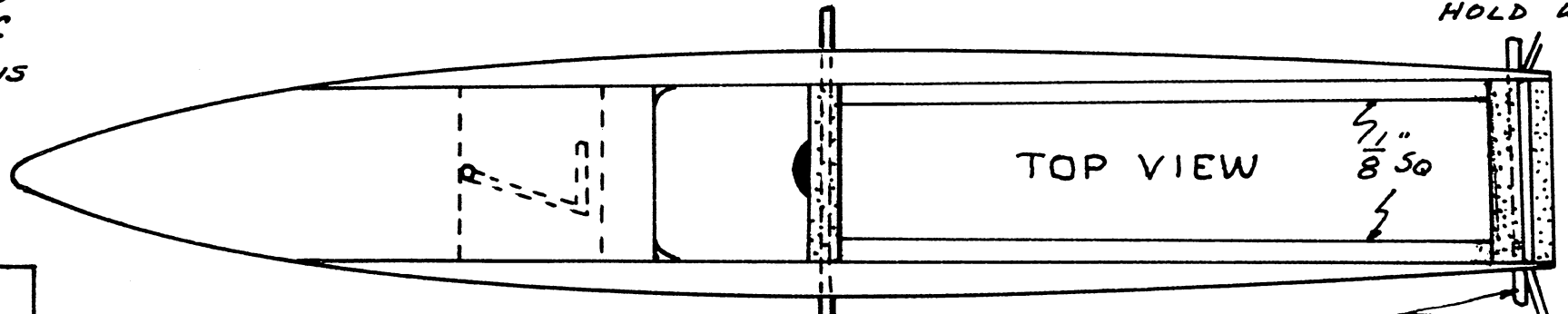


$\frac{3}{4}$ " WOOD  
WHEEL



$\frac{3}{4}$ " WOOD OR RUBBER  
WHEELS

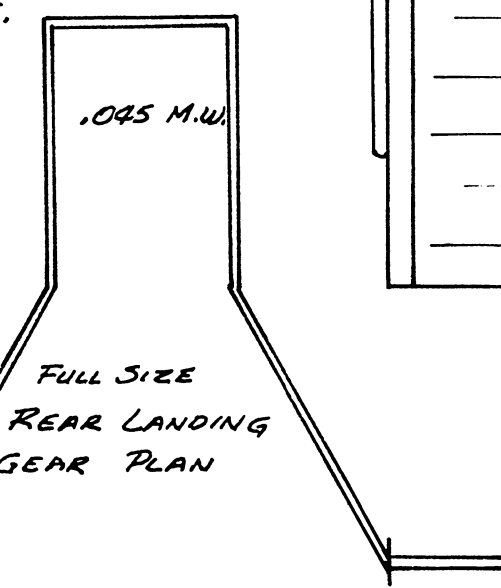
SOLDER WASHERS  
TO LANDING GEAR TO  
HOLD WHEELS IN PLACE.



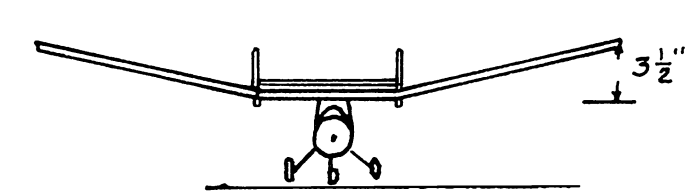
$\frac{3}{32}$ "  
PLYWOOD  
FIREWALL

USE  $\frac{1}{16}$ " HARDWOOD  
DOWEL OR WIRE FOR  
WING HOLD DOWN

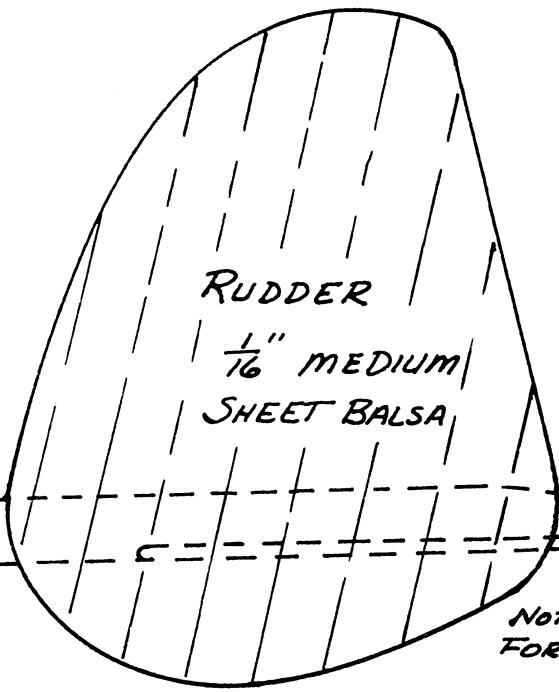
$\frac{3}{32}$ " PLYWOOD  
FIREWALL



1.085 M.W.  
FULL SIZE  
REAR LANDING  
GEAR PLAN



BOOMS SHOWN FULL SIZE

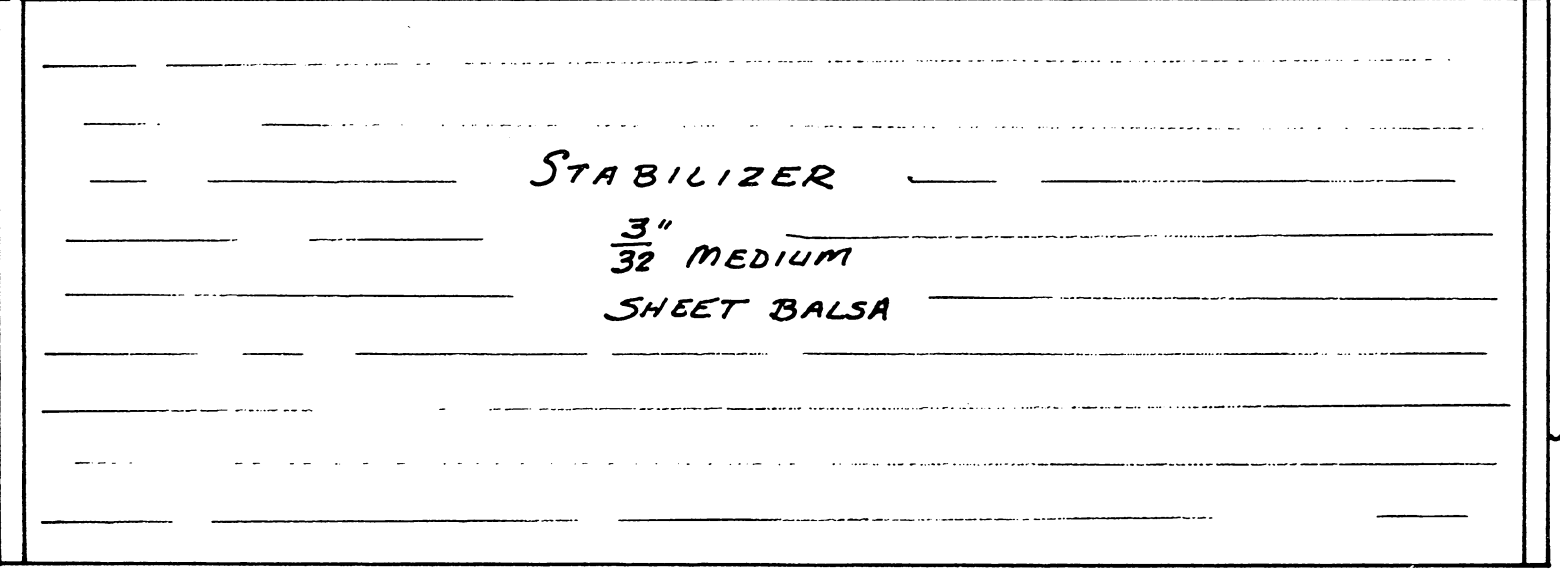


RUDDER  
 $\frac{1}{16}$ " MEDIUM  
SHEET Balsa

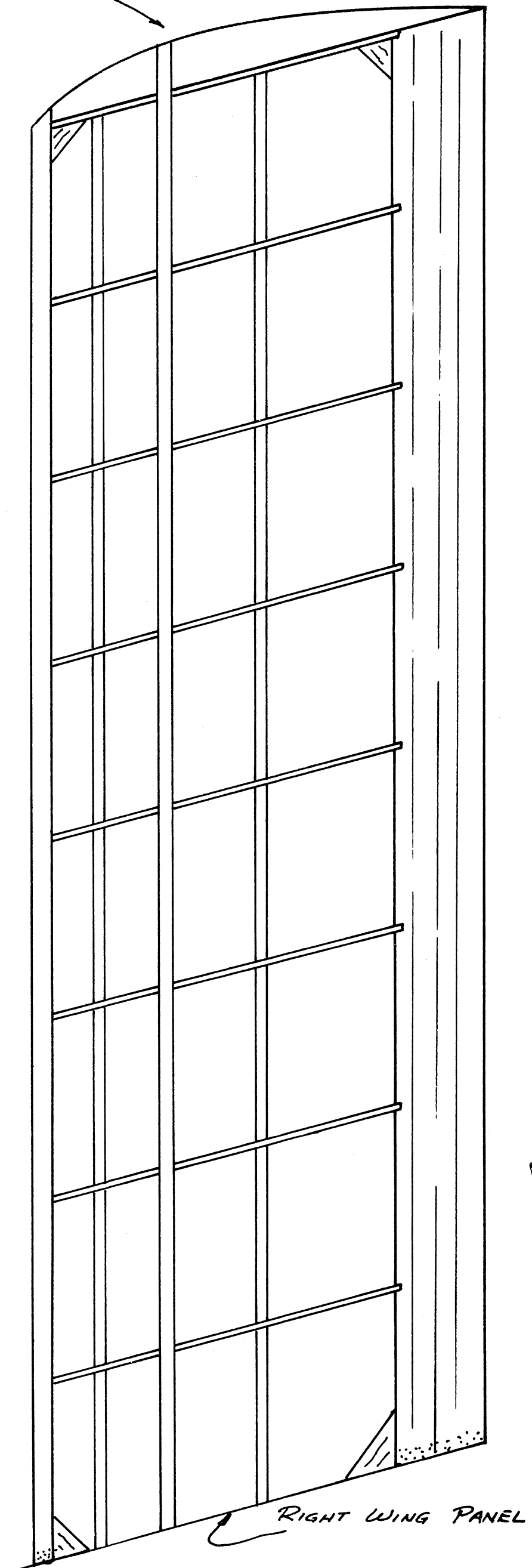
NOTCH BOOMS  
FOR STAB.

COVER WING WITH JAP TISSUE OR SILK SPAN & APPLY 2 COATS  
OF THINNED CLEAR DOPE

TRIM STABILIZER & RUDDER WITH COLORED  
TISSUE - APPLY AT LEAST 3 COATS OF DOPE



STABILIZER  
 $\frac{3}{32}$ " MEDIUM  
SHEET Balsa



RIGHT WING PANEL

0 1 2 3 4 5 6  
inches

The **MODEL BUILDER** magazine  
12552 Del Rey Drive, Santa Ana, California 92705  
**Plan No: 9722**

**THE BABY BOOMER**  
.020 GAS FREE FLIGHT SPORT MODEL  
DESIGNED BY ART REINERS