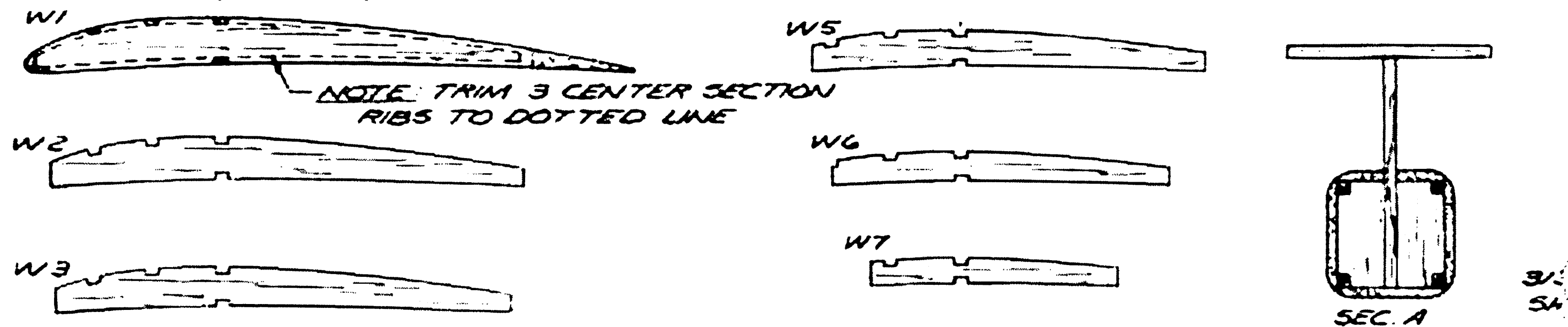
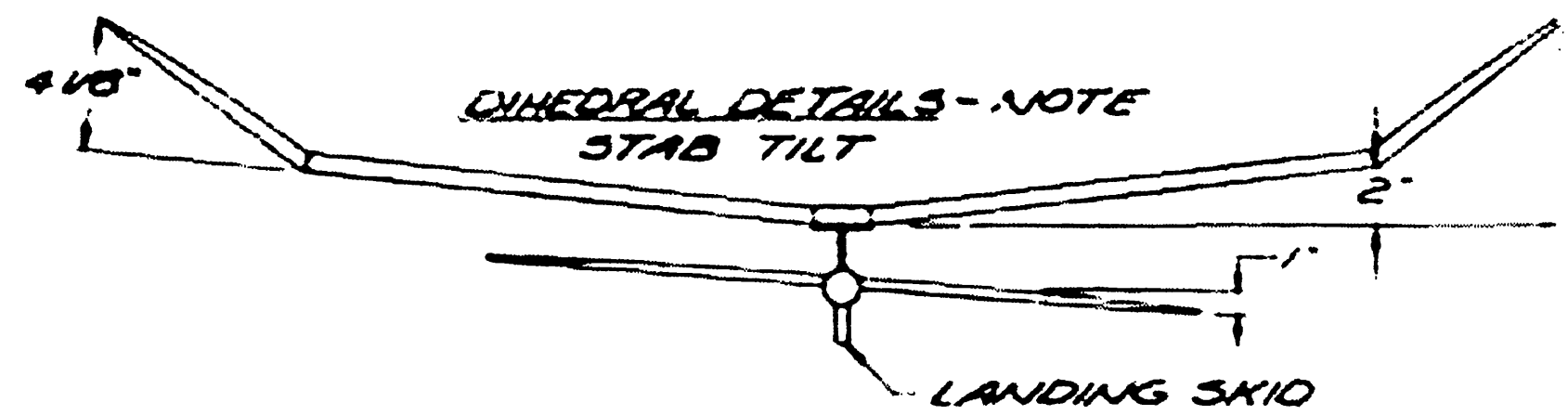


WING RIBS - 1/16" MED SHT. BALSA,
39 REQ'D OF #1, 2 EACH OF ALL OTHERS

ALL GUSSETS 3/16" SHT.



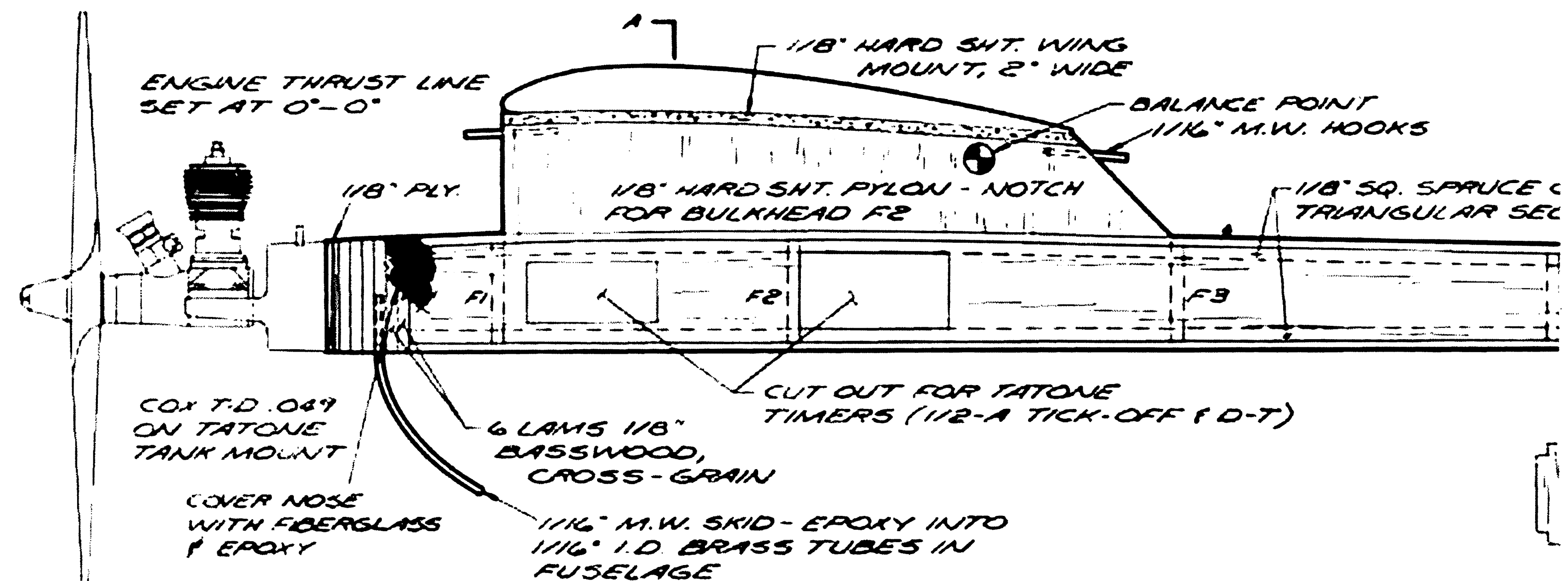
NOTE: TRIM 3 CENTER SECTION
RIBS TO DOTTED LINE



DIHEDRAL DETAILS - NOTE
STAB TILT

LANDING SKID

1/16" PLY DIHEDRAL BRACE -
1 REQ'D



ENGINE THRUST LINE
SET AT 0°-0°

1/8" HARD SHT. WING
MOUNT, 2" WIDE

BALANCE POINT
1/16" M.W. HOOKS

1/8" HARD SHT. PYLON - NOTCH
FOR BULKHEAD F2

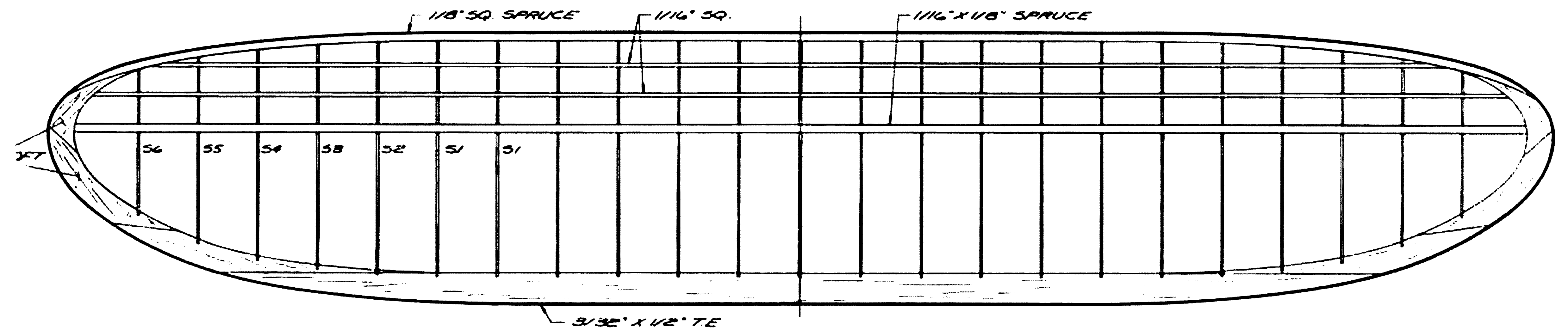
1/8" SQ. SPRUCE &
TRIANGULAR SEC

COX T.D. 049
ON TATONE
TANK MOUNT

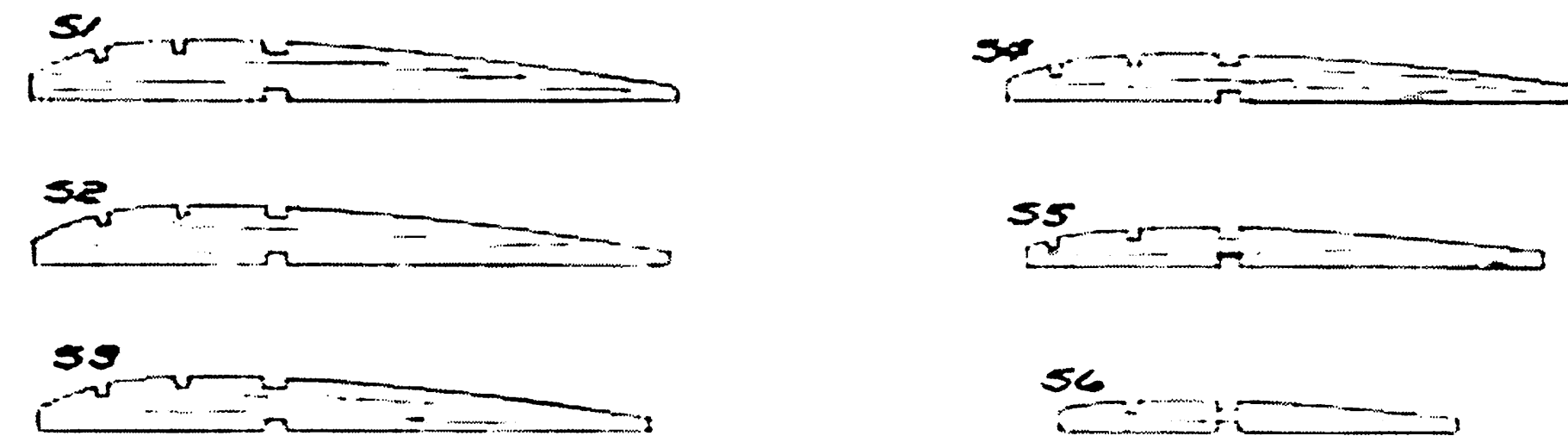
6 LAMS 1/8"
BASSWOOD,
CROSS-GRAIN

CUT OUT FOR TATONE
TIMERS (1/2" A TICK-OFF & D-T)

1/16" M.W. SKID - EPOXY INTO
1/16" I.D. BRASS TUBES IN
FUSELAGE



STABILIZER RIBS
ARE 1/32" MED. SHT
BALSA, 13 OF #1
REQ'D, 2 EACH OF
ALL OTHERS



RIBS - CARVE TO
1 AFT OF F3

3/32" MED. SHT. TOP & BOTTOM

3/32" SOFT SHT. SIDES

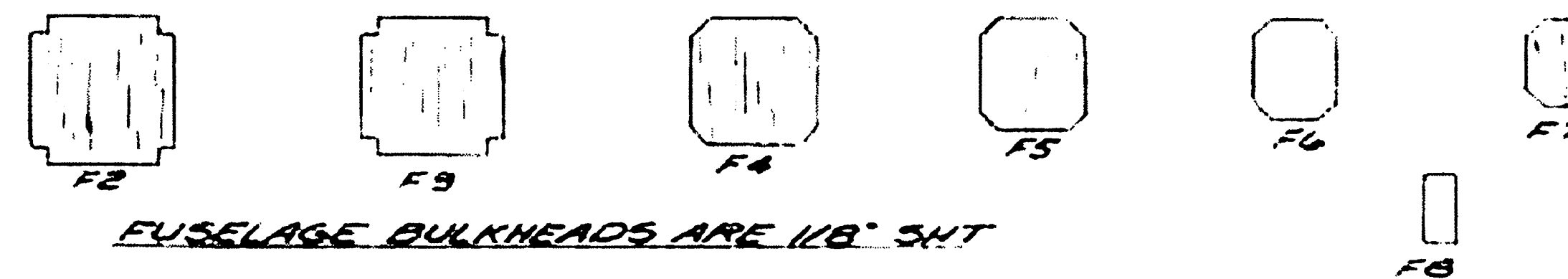
1/8" SHT. STAB MOUNT, 2" WIDE

1/8" SQ. SPRUCE

1/16" DOWEL

3/32" SOFT
SHT. FIN

RUDDER
TAB



FUSELAGE BULKHEADS ARE 1/8" SHT

SHRIKE

1/2-A COMPETITION FREE-FLIGHT
DESIGNED BY BILL LANGENBERG
DRAWN FOR M.B. BY PHIL BERNHARDT
SPAN - 53" AREA - APPROX 296.0"
LENGTH - 4 1/2" WEIGHT - 8.9 OZS.



MODEL BUILDER magazine
1948 Incorpor. Santa Ana, California 92701

Plan No: 6753