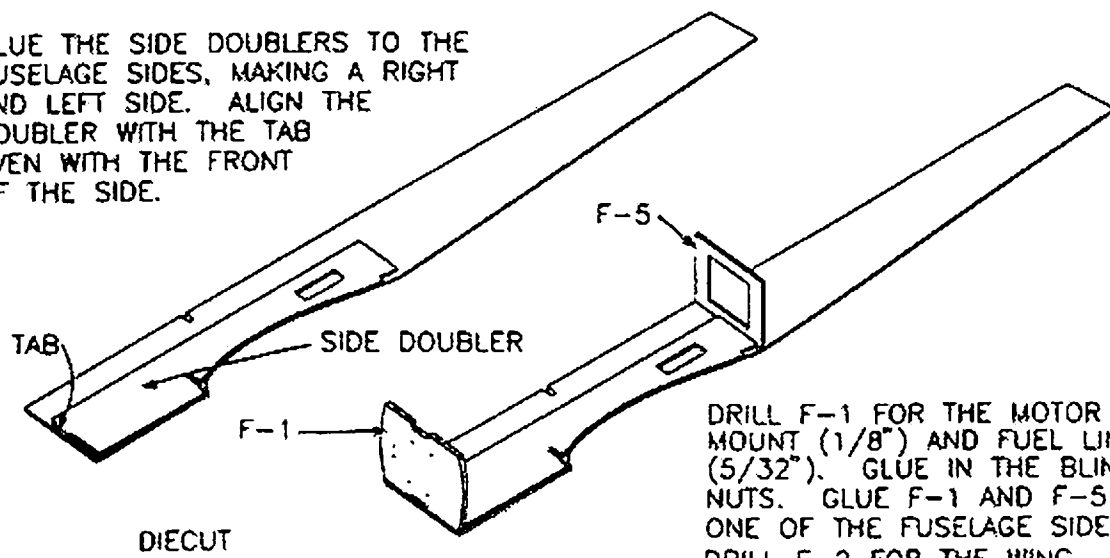


STEP ONE

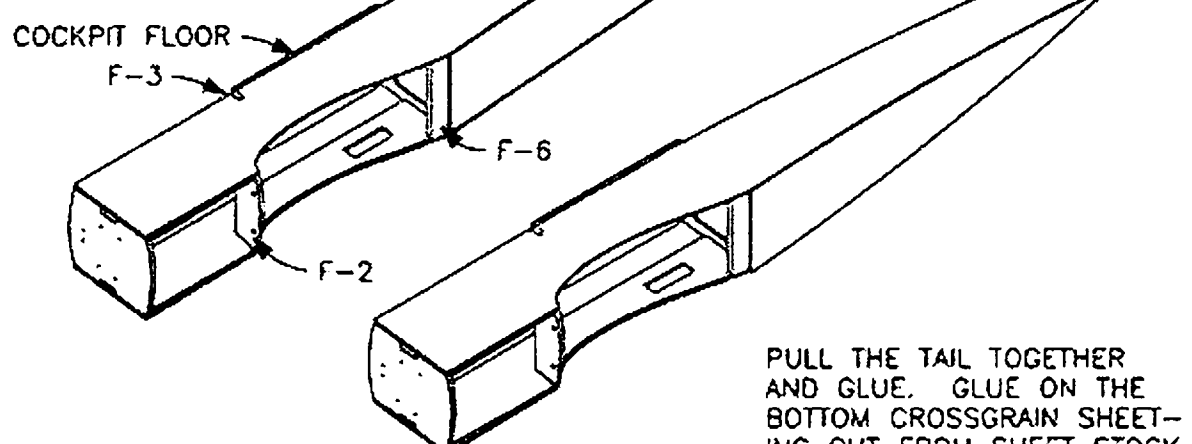
GLUE THE SIDE DOUBLERS TO THE FUSELAGE SIDES, MAKING A RIGHT AND LEFT SIDE. ALIGN THE DOUBLER WITH THE TAB EVEN WITH THE FRONT OF THE SIDE.



DRILL F-1 FOR THE MOTOR MOUNT (1/8") AND FUEL LINES (5/32"). GLUE IN THE BLIND NUTS. GLUE F-1 AND F-5 TO ONE OF THE FUSELAGE SIDES. DRILL F-2 FOR THE WING MOUNT DOWELS (1/8").

STEP TWO

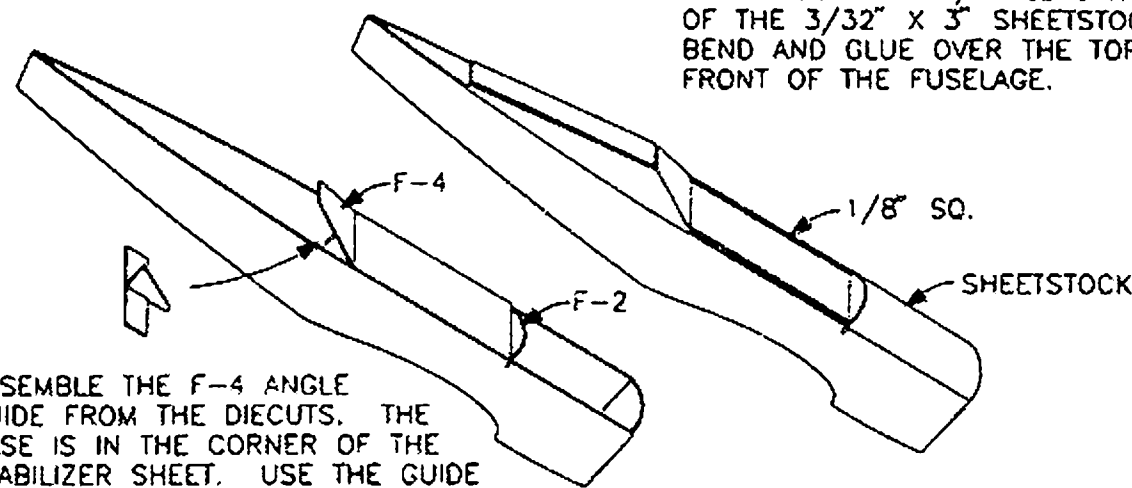
GLUE ON THE OTHER FUSELAGE SIDE. GLUE IN F-2, F-6, F-3 AND THE COCKPIT FLOOR.



PULL THE TAIL TOGETHER AND GLUE. GLUE ON THE BOTTOM CROSSGRAIN SHEETING CUT FROM SHEET STOCK.

STEP THREE

GLUE ON THE TOP REAR SIDES. SHEET THE TOP WITH 3/32" Balsa. CUT A 4-1/4" LENGTH OF THE 3/32" X 3" SHEETSTOCK. BEND AND GLUE OVER THE TOP FRONT OF THE FUSELAGE.



ASSEMBLE THE F-4 ANGLE GUIDE FROM THE DIECUTS. THE BASE IS IN THE CORNER OF THE STABILIZER SHEET. USE THE GUIDE TO SUPPORT F-4 WHILE GLUING, THEN REMOVE THE SUPPORT.

INSTRUCTIONS

TOOLS AND ADHESIVES TOOLS NEEDED TO BUILD THIS MODEL ARE: X-ACTO KNIFE, PLIERS, SCREWDRIVERS, DRILL WITH 1/16", 1/8" AND 5/32" DRILL BITS AND BOTH MEDIUM AND FINE SANDPAPER. FOR GLUE WE RECOMMEND MEDIUM VISCOSITY CYA GLUE FOR ALL WOOD TO WOOD JOINTS. FOR WOOD TO FOAM USE WHITE GLUE OR EPOXY. USE EPOXY ONLY TO JOIN THE TWO WING HALVES.

STEP ONE: BUILD THE MODEL USING THE PICTURE SEQUENCE AS A GUIDE. GLUE THE 3/32" Balsa SIDE DOUBLERS TO THE FUSELAGE SIDES. ALIGN THE DOUBLERS WITH THE BOTTOM OF THE DOUBLER EVEN WITH THE BOTTOM OF THE SIDE AND THE TAB EVEN WITH THE FRONT OF THE SIDE. BE SURE TO MAKE A RIGHT AND LEFT SIDE. DRILL F-1 FOR THE MOTOR MOUNT BOLTS AND FUEL LINES. DRILL F-2 FOR THE TWO 1/8" DOWELS. GLUE F-1 AND F-5 TO ONE OF THE SIDES USING A SQUARE.

STEP TWO: GLUE ON THE OTHER FUSELAGE SIDE. GLUE IN F-2 AND F-6. THE WING HOLD DOWN. GLUE IN F-3, CENTERED IN THE NOTCHES. GLUE THE TWO PARTS OF THE COCKPIT FLOOR TOGETHER WITH THE GRAIN CROSS TO THE LENGTH AND GLUE ONTO THE TOP OF THE FUSELAGE BEHIND F-3. PULL THE TAIL TOGETHER AND GLUE. GLUE ON THE BOTTOM REAR SHEETING CUT FROM SHEETSTOCK.

STEP THREE: ASSEMBLE THE F-4 ANGLE GUIDE USING THE BASE WHICH IS PARTIALLY CUT IN THE CORNER OF THE STABILIZER SHEET. USE THE ANGLE GUIDE TO SUPPORT F-4 WHILE GLUING IT TO THE BACK EDGE OF THE COCKPIT FLOOR. GLUE THE TOP REAR SIDES BY FIRST GLUING THEM TO F-4 AND THE FIRST INCH OF THE SIDES. GLUE ON THE TOP REAR SHEETING CUT FROM SHEETSTOCK. CUT A 4-1/4" LENGTH OF SHEETSTOCK, WET THE TOP AND GLUE OVER THE TOP FRONT BETWEEN F-1 AND F-3. GLUE ON THE 1/8" SQ. ALONG THE SIDES OF THE COCKPIT FLOOR.

STEP FOUR: GLUE THE 1/8" X 1/4" STRIPS TO THE TRAILING EDGE OF THE WING PANELS WITH WHITE GLUE. MAKE THE ALERON LINKAGE USING THE PLAN AS A GUIDE. CUT OFF 1-1/2" FROM EACH OF THE ALERON PIECES FOR THE INBOARD SECTION. CAREFULLY NOTCH THE INBOARD PIECES FOR THE ALERON LINKAGE AND GLUE IN THE LINKAGE. GLUE THE INBOARD SECTIONS WITH THE LINKAGE TO THE WING PANELS. BEVEL THE LEADING EDGE OF THE ALERONS. EPOXY THE WING PANELS TOGETHER, BLOCKING UP ONE WING TIP 2". SAND THE FRONT OF THE WING CENTER TO FIT THE FUSELAGE. SAND OFF THE FLASHING ALONG THE LEADING EDGE AND THE SURFACE BUMPS WITH FINE SANDPAPER. BEFORE COVERING, APPLY A STRIP OF 3/4" NYLON FILAMENT STRAPPING TAPE FROM TIP TO TIP, TOP AND BOTTOM OF THE WING ALONG THE THICKEST SECTION OF THE WING (NOT SUPPLIED).

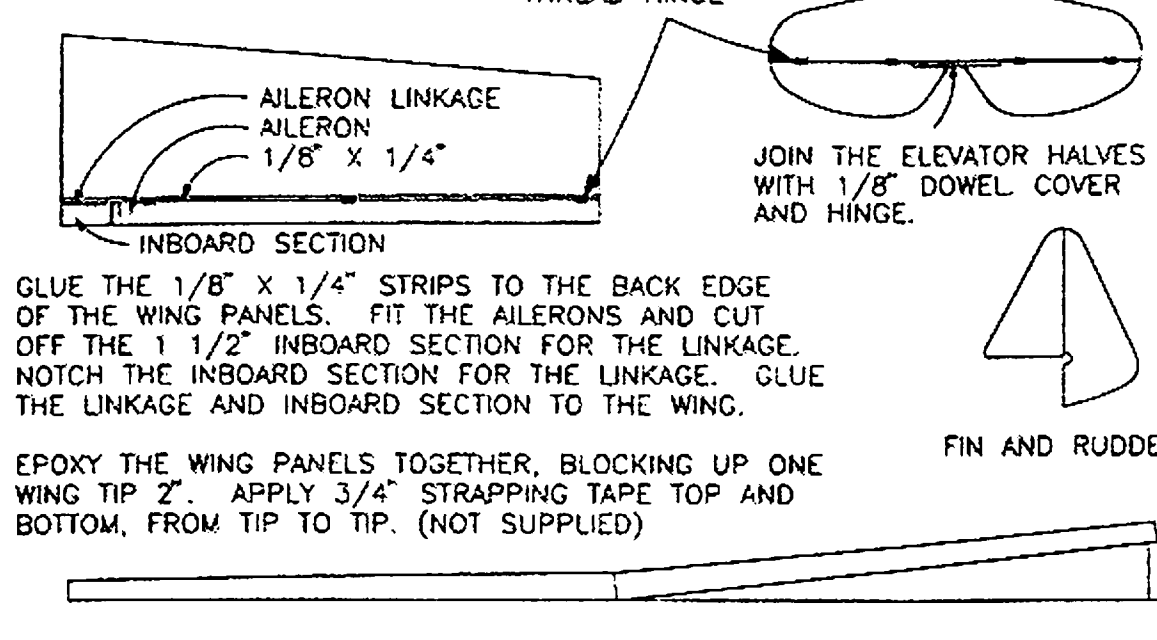
STEP FIVE: USING THE HOLES IN F-2 AS A GUIDE, DRILL TWO 1/8" HOLES INTO THE FOAM WING FOR THE MOUNTING DOWELS AND EPOXY THE DOWELS INTO THE WING. INSTALL THE TWO REAR MOUNTING SCREWS. REMOVE THE SCREWS AND APPLY A DROP OF GLUE INTO THE HOLES TO HARDEN THE WOOD. CUT A 2-3/4" LENGTH OF THE 3/32" Balsa SHEETSTOCK, WET THE OUTSIDE AND GLUE OVER THE FUSELAGE BOTTOM BETWEEN F-1 AND F-2. EPOXY IN THE THREE 1/2" SQUARE PLYWOOD COWL MOUNTS POSITION THE COWL AS SHOWN ON THE PLAN AND MOUNT WITH THREE #4 SW SCREWS. HARDEN THE HOLES IN THE FUSELAGE WITH GLUE.

COVERING AND TRIM: SAND THE MODEL WITH FINE SANDPAPER AND COVER WITH LOW TEMPERATURE FILM SUCH AS ULTRACOTE. HIGH TEMPERATURES WILL MELT THE FOAM WING. COVER AND DECORATE THE TAIL PARTS BEFORE GLUING TO THE FUSELAGE. TRIM AWAY ANY STRIPS OF COVERING WHERE THERE IS TO BE A GLUE JOINT. CUT THE 1/4" X 3/8" X 2-5/8" Balsa PIECE DIAGONALLY TO MAKE THE FILLER WEDGES BETWEEN THE FIN AND STABILIZER. GLUE THEM IN PLACE AND COVER. TRIM THE CANOPY TO FIT AND MARK THE POSITION ON THE FUSELAGE. MAKE A ROW OF PIN HOLES THROUGH THE COVERING ALONG THE CANOPY GLUE LINE. GLUE THE CANOPY IN PLACE WITH EPOXY OR FORMULA 560 CANOPY GLUE. HOLD THE CANOPY IN PLACE WITH RUBBER BANDS UNTIL THE GLUE SETS. CUT, PEEL AND STICK THE DECALS IN PLACE. FUELPROOF THE FIREWALL WITH EPOXY.

STEP SIX: TWO SERVOS IN THE FUSELAGE CONTROL ALERONS AND ELEVATOR. THE ALERON LINKAGE PLUGS INTO THE ALERON SERVO ARM WITH Z BENDS AS THE WING IS TIPPED IN. USE THE PLAN AS A GUIDE TO MAKE THE .045 (SMALLER WIRE) ALERON PUSHRODS. SOLDER OR EPOXY THE WIRE INTO THE THREADED COUPLERS AND ADJUST THE CLEAVES UNTIL THE ALERONS ARE ALIGNED. MOUNT THE RECEIVER WITH VELCRO (NOT SUPPLIED) TO THE COCKPIT FLOOR BEHIND THE SERVOS.

FLYING: SOLDER AN ALLEN SCREW HEAD TO THE NEEDLE VALVE SO IT CAN BE ADJUSTED THROUGH A HOLE IN THE COWL. SOLDER A WIRE TO THE GLOW HEAD AND AN ENGINE MOUNT BOLT AND BRING THEM OUT THE BACK OF THE COWL TO LIGHT THE ENGINE. USE A COX 6 X 3 GRAY COMPETITION PROPPELLER AND COX SUPER POWER FUEL FOR BEST PERFORMANCE FROM THE COX .049-.051 ENGINES. HAND LAUNCH THE T-6 TO GET IT FLYING AND LAND ON GRASS.

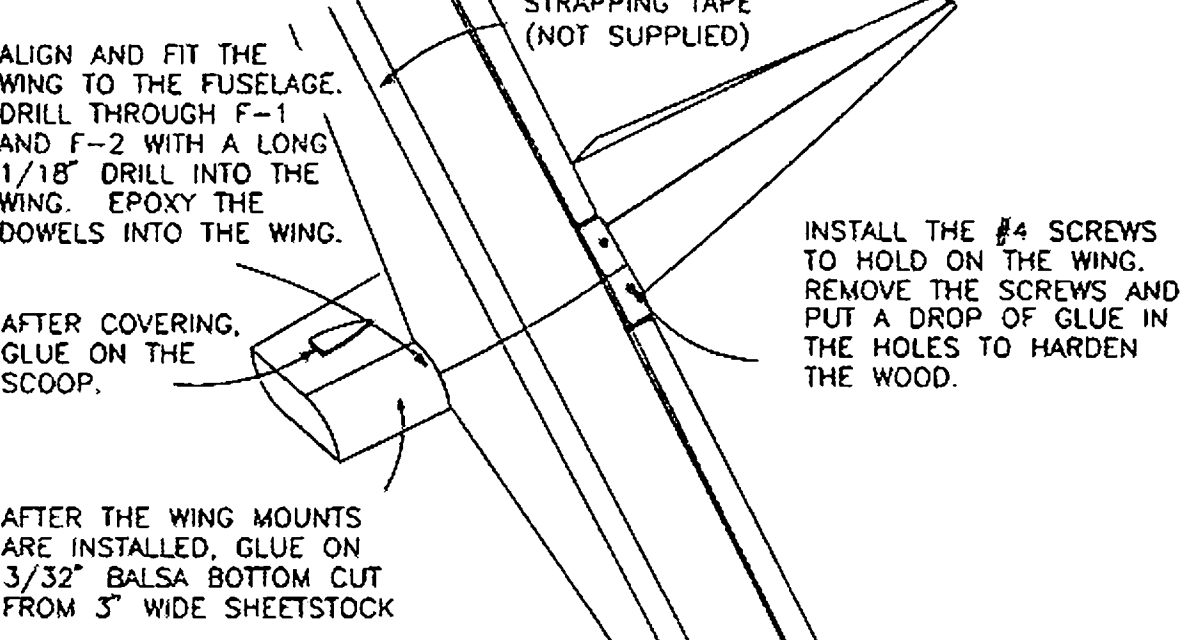
STEP FOUR



GLUE THE 1/8" X 1/4" STRIPS TO THE BACK EDGE OF THE WING PANELS. FIT THE ALERONS AND CUT OFF THE 1 1/2" INBOARD SECTION FOR THE LINKAGE. NOTCH THE INBOARD SECTION FOR THE LINKAGE. GLUE THE LINKAGE AND INBOARD SECTION TO THE WING.

EPOXY THE WING PANELS TOGETHER, BLOCKING UP ONE WING TIP 2". APPLY 3/4" STRAPPING TAPE TOP AND BOTTOM, FROM TIP TO TIP. (NOT SUPPLIED)

STEP FIVE



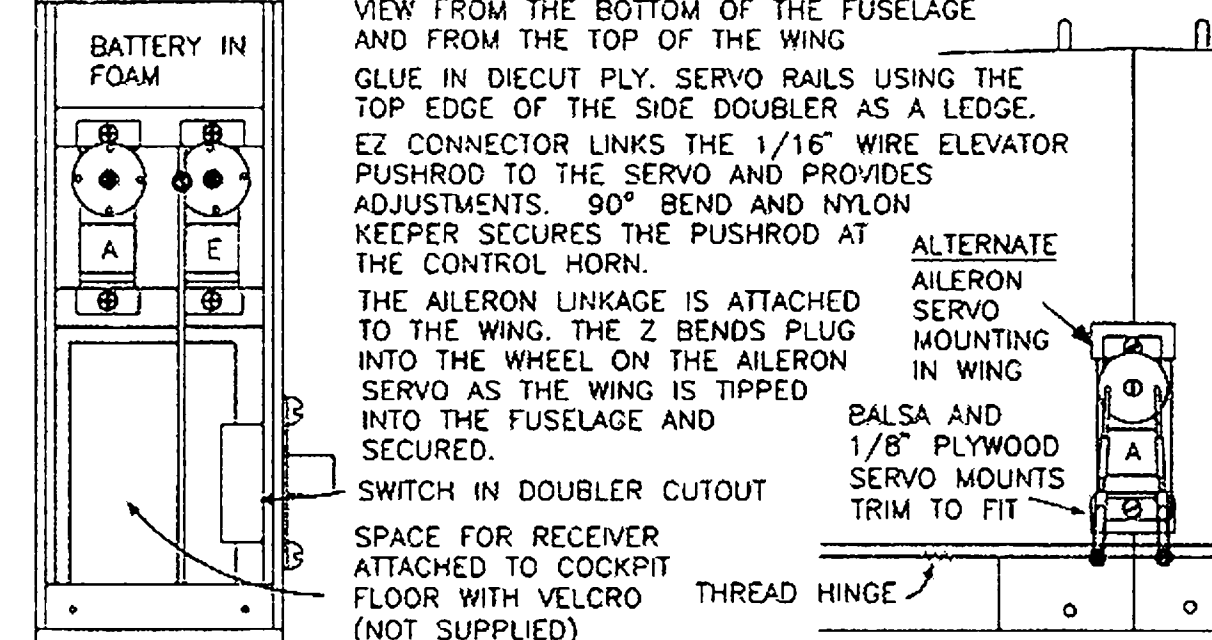
ALIGN AND FIT THE WING TO THE FUSELAGE. DRILL THROUGH F-1 AND F-2 WITH A LONG 1/16" DRILL INTO THE WING. EPOXY THE DOWELS INTO THE WING.

AFTER COVERING, GLUE ON THE SCOOP.

INSTALL THE #4 SCREWS TO HOLD ON THE WING. REMOVE THE SCREWS AND PUT A DROP OF GLUE IN THE HOLES TO HARDEN THE WOOD.

AFTER THE WING MOUNTS ARE INSTALLED, GLUE ON 3/32" Balsa BOTTOM CUT FROM 3" WIDE SHEETSTOCK

STEP SIX



VIEW FROM THE BOTTOM OF THE FUSELAGE AND FROM THE TOP OF THE WING. GLUE IN DIECUT PLY. SERVO RAILS USING THE TOP EDGE OF THE DIECUT AS A LEDGE.

EZ CONNECTOR LINKS THE 1/16" WIRE ELEVATOR PUSHROD TO THE SERVO AND PROVIDES ADJUSTMENTS. 90° BEND AND NYLON KEEPER SECURES THE PUSHROD AT THE CONTROL HORN.

THE ALERON LINKAGE IS ATTACHED TO THE WING. THE Z BENDS PLUG INTO THE WHEEL ON THE ALERON SERVO AS THE WING IS TIPPED INTO THE FUSELAGE AND SECURED.

SPACE FOR RECEIVER ATTACHED TO COCKPIT FLOOR WITH VELCRO (NOT SUPPLIED)

ALTERNATE ALERON SERVO MOUNTING IN WING. Balsa and 1/8" Plywood servo mounts trim to fit.

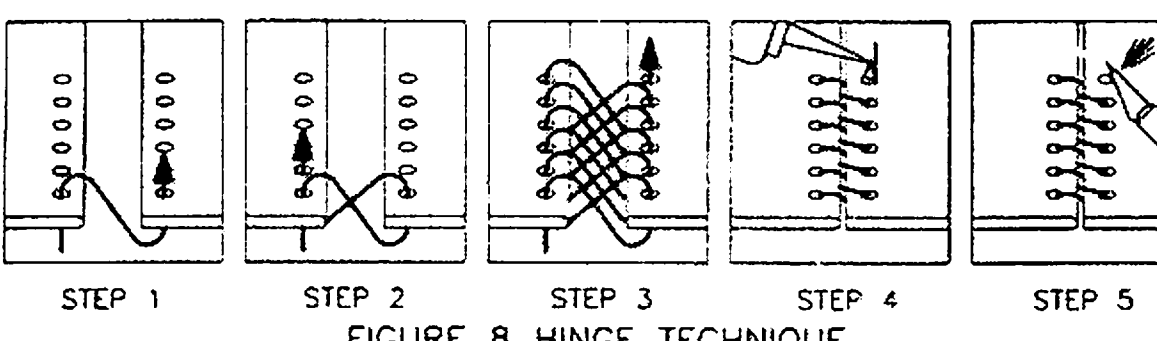


FIGURE 8 HINGE TECHNIQUE

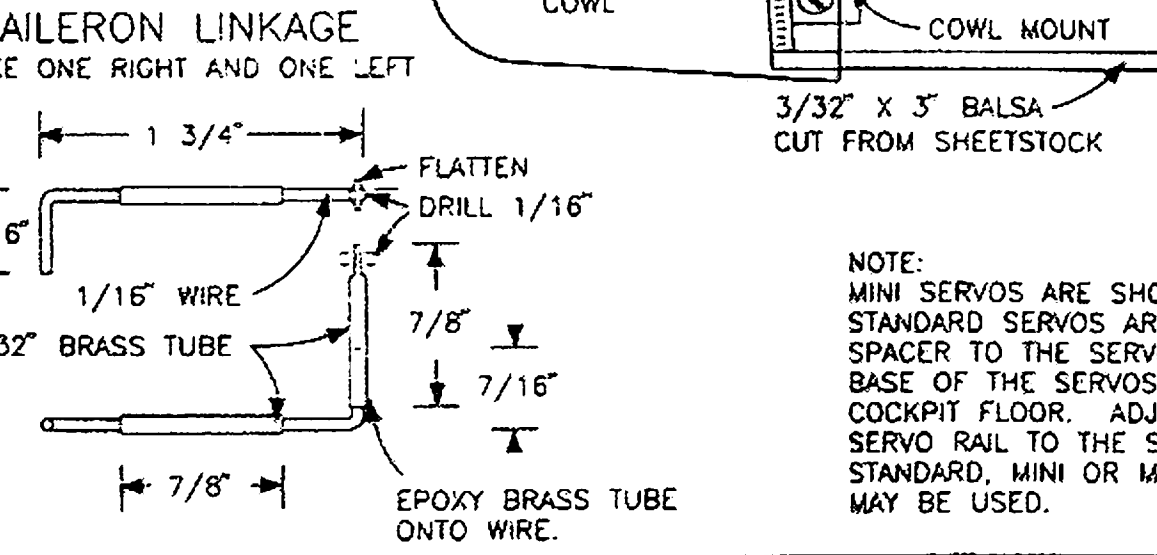
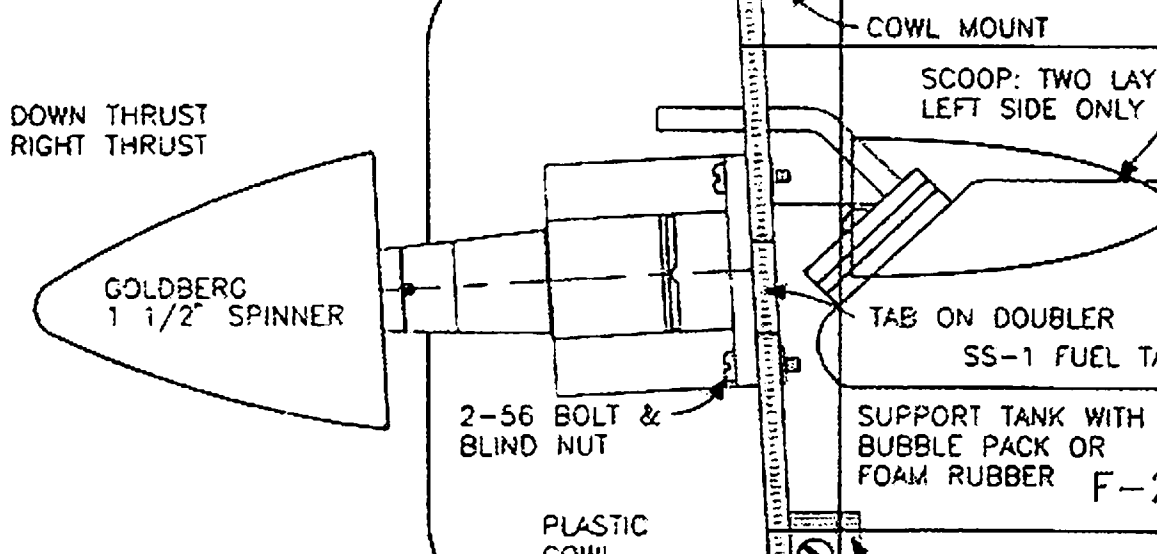
DRILL MOTOR MOUNT HOLES 1/8" AND FUEL LINE HOLES 5/32"

TO ADJUST NEEDLE VALVE FILE A SLOT IN NEEDLE VALVE FOR SCREWDRIVER OR SOLDER THE HEAD OF AN ALLEN HEAD SCREW ONTO THE NEEDLE VALVE AND TURN THROUGH A HOLE IN THE COWL.

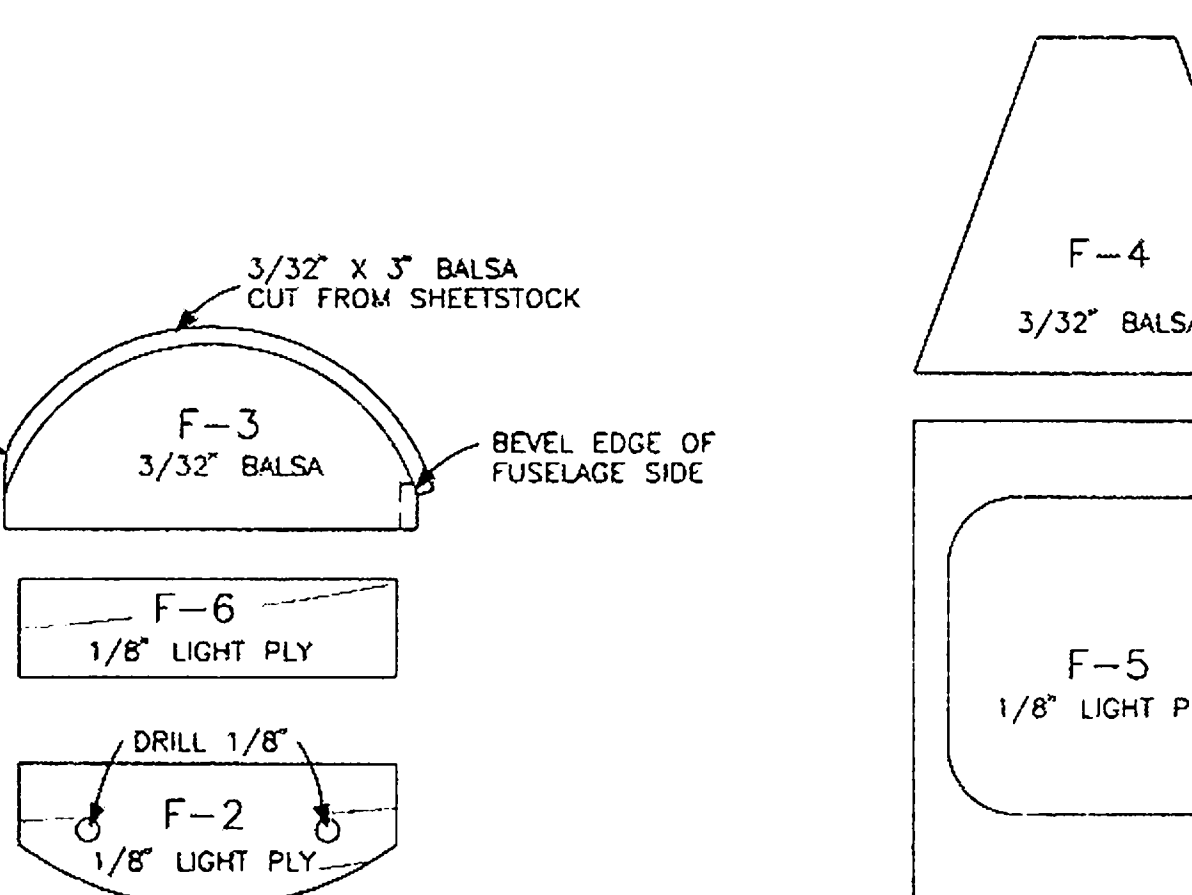
SUGGEST USING A "HALF A LOCK" GLOW PLUG CONNECTOR FROM MODEL PRODUCTS CORP. OR: WRAP AND SOLDER A PIECE OF INSULATED WIRE TO THE TOP OF THE GLOW HEAD AND ANOTHER TO ONE OF THE ENGINE MOUNT SCREWS TO LIGHT THE ENGINE INSIDE THE COWL.

ENGINE
COX TD .049 ENGINE SHOWN ON ACE RC 1/2A MOTOR MOUNT FOR THROTTLE CONTROL. USE AN ACE RC THROTTLE SLEEVE 60L60 AND CYLINDER 60K40. OR COX TD .09 WITH THROTTLE

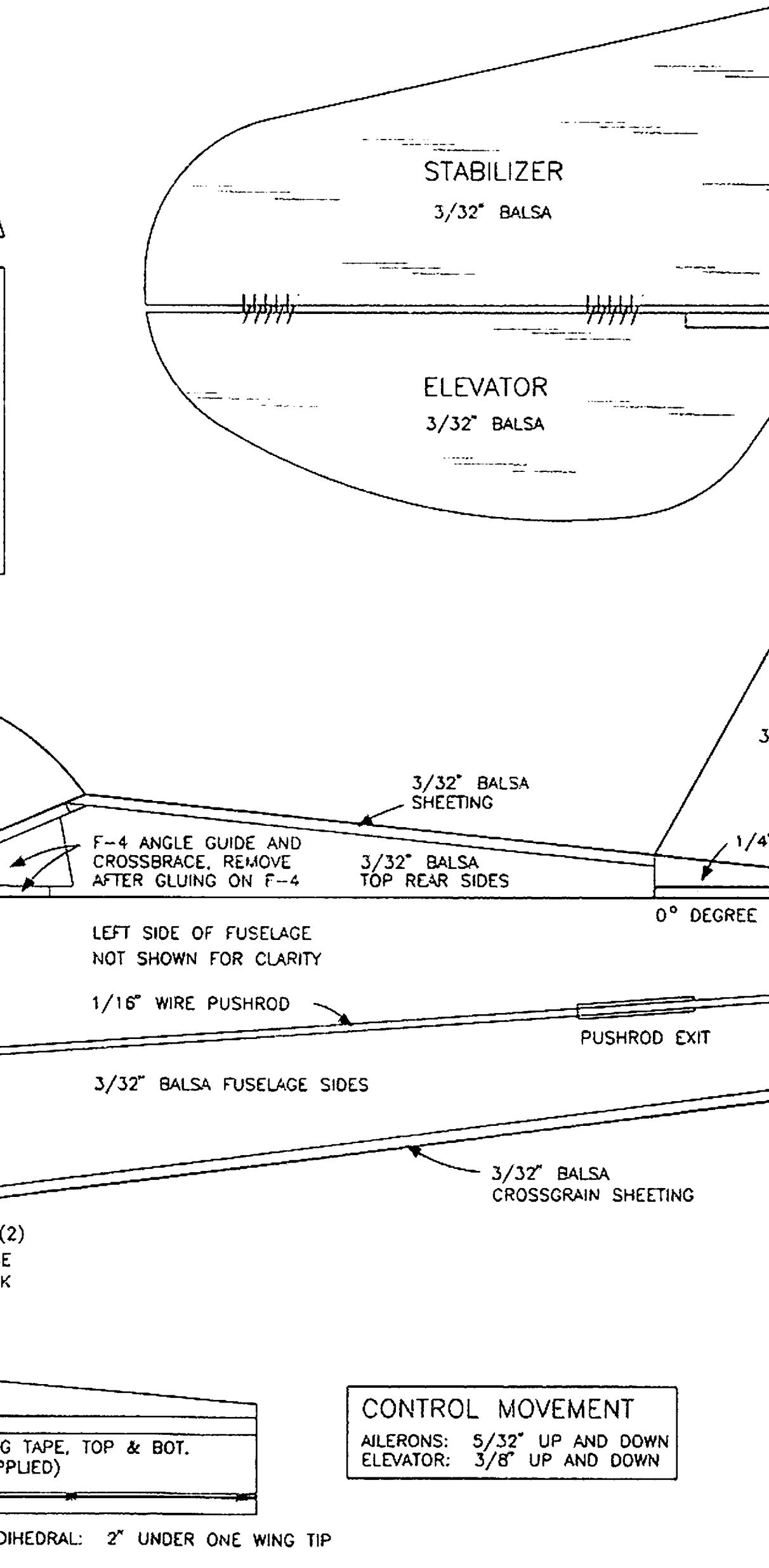
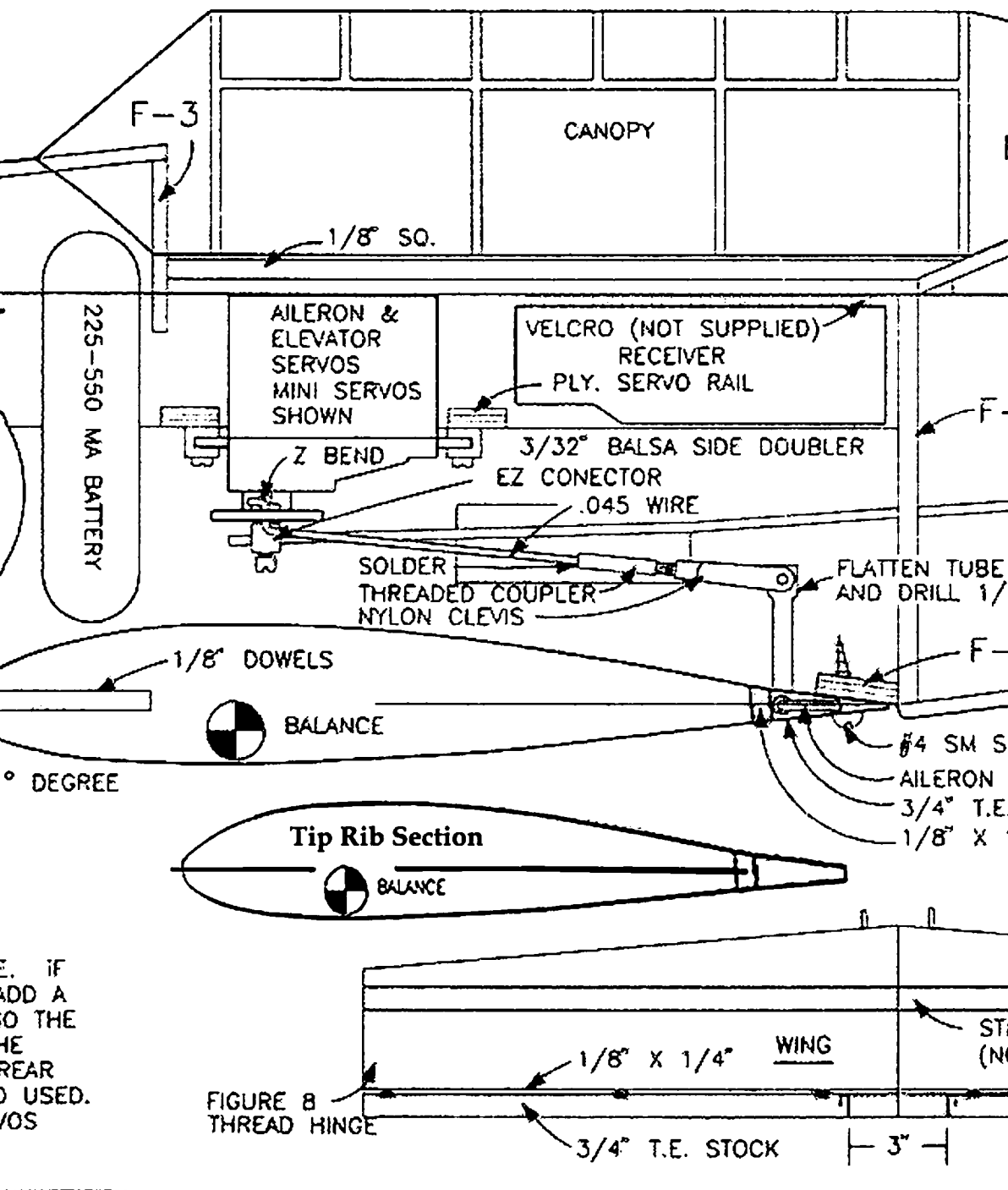
3° DOWN THRUST
0° RIGHT THRUST



NOTE: MINI SERVOS ARE SHOWN ABOVE. IF STANDARD SERVOS ARE USED, ADD A SPACER TO THE SERVO RAILS SO THE BASE OF THE SERVOS CLEAR THE COCKPIT FLOOR. ADJUST THE REAR SERVO RAIL TO THE SIZE SERVO USED. STANDARD, MINI OR MICRO SERVOS MAY BE USED.



CANOPY FRAMING IS SIG OR PACTRA MODEL AIRCRAFT DOPE APPLIED WITH A BRUSH. USE 1/4" AUTOMOTIVE VINYL MASKING TAPE TO MASK THE LINES.

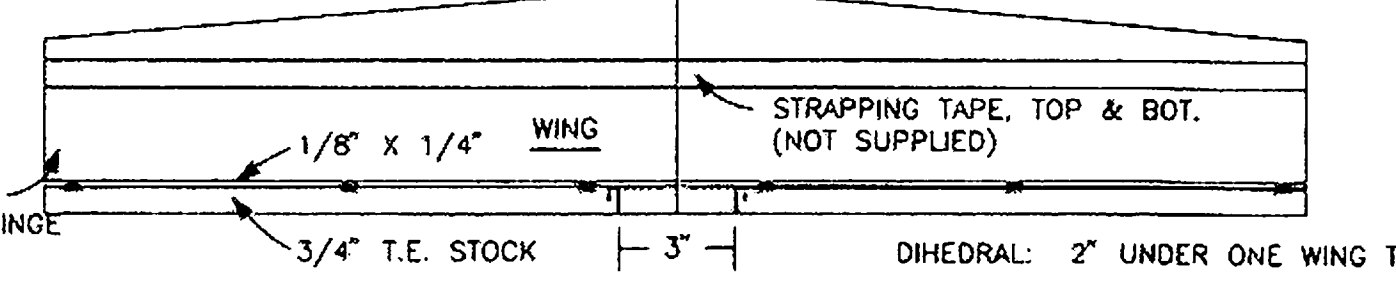


SIMPLE T-6 TEXAN

DESIGNED AND DRAWN BY FRED REESE

<p>WINGSPAN 34"</p> <p>WING AREA 183 SQ. IN.</p> <p>LENGTH 24 1/2"</p> <p>WEIGHT 18 OZ.</p> <p>ENGINE .049-.051</p> <p>RADIO 2 CHANNEL</p>	<p>©1996 ACE R/C, INC.</p> <p>ACE R/C, INC.</p> <p>116 W 19 ST, POB 472, HIGGINSVILLE, MO 64037-0472</p>
--	---

CONTROL MOVEMENT
ALERONS: 5/32" UP AND DOWN
ELEVATOR: 3/8" UP AND DOWN



DIHEDRAL: 2° UNDER ONE WING TIP