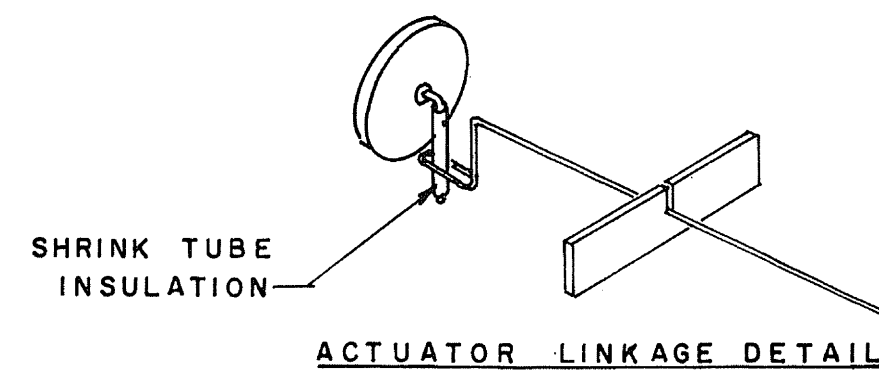


NOTES:
 FOR SLOW, DOCILE FLIGHTS, IN MODERATE WINDS, USE THE SEMI-SYMMETRICAL AIRFOIL. THE FLAT BOTTOM AIRFOIL WILL PROVIDE FASTER, MORE AGILE, AEROBATIC FLIGHT. ACTUATOR, TORQUE ROD, AND RUDDER MOVEMENTS MUST BE LOOSE, SLOPPY, AND ABSOLUTELY FREE OF ANY BINDING.
 FOR LONGER FLIGHTS, INSTALL A "PERFECT" NO. 5, 1/2 OZ. "RECTANK" BEHIND FIREWALL. MINIMUM DIHEDRAL 6° EACH WING. BLOCK UP BOTH WINGS 1 3/4" UNDER THE TIP RIBS WHILE GLUING HALVES TOGETHER. ENGINE THRUST LINE IS 7°-9° DOWN, 3° RIGHT.



CITABRIA	
DESIGNED & DRAWN BY	ROMAN BUKOLT
FOR COX .02 ENGINES — ACE DE RECEIVER ADAMS BABY TWIN ACTUATOR (REG. COIL)	
WING SPAN — 35"	WING AREA — 210 SQ. IN. WT. — 14 OZ.

