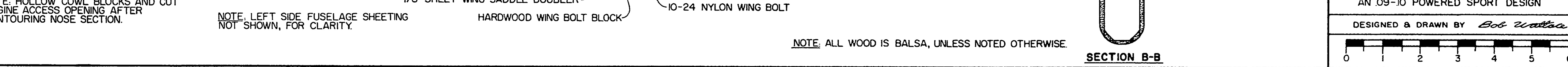
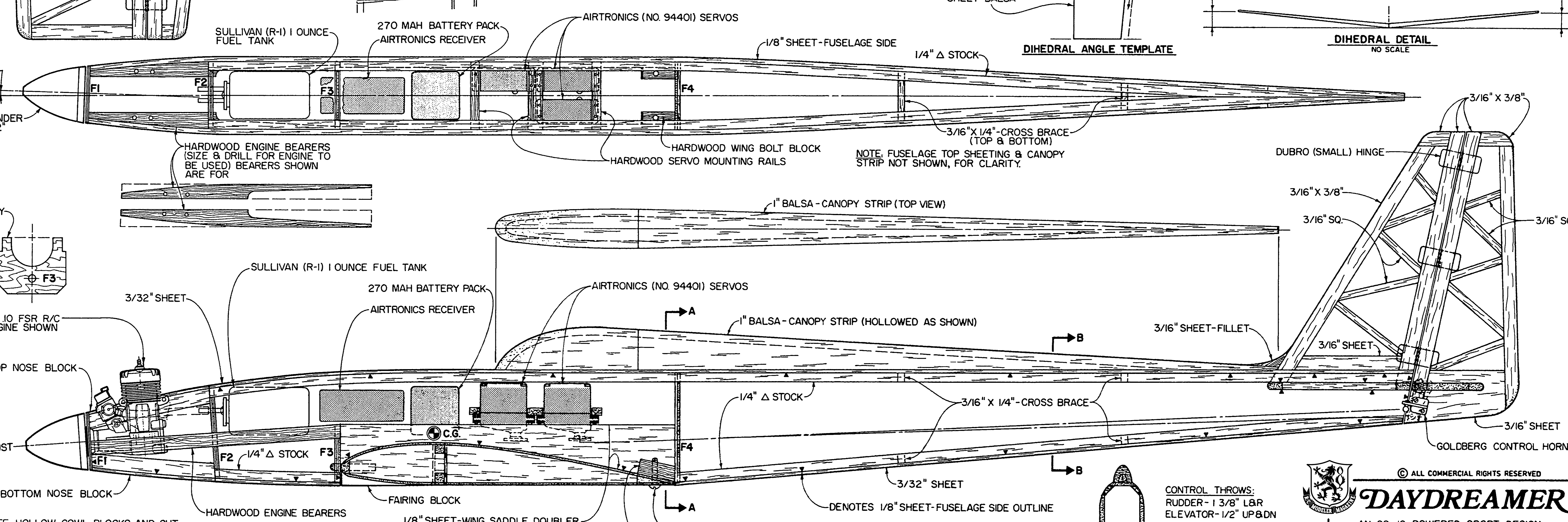
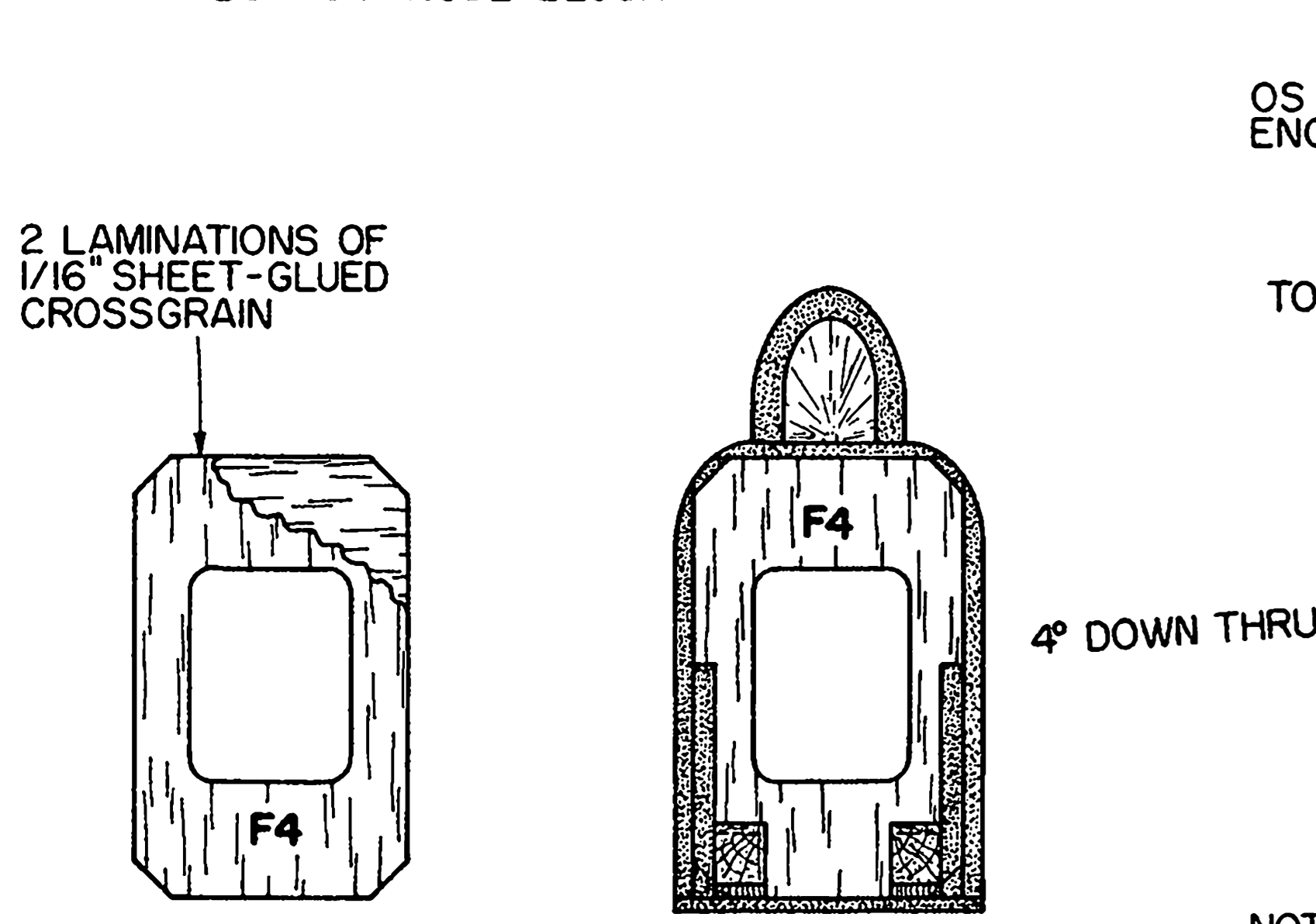
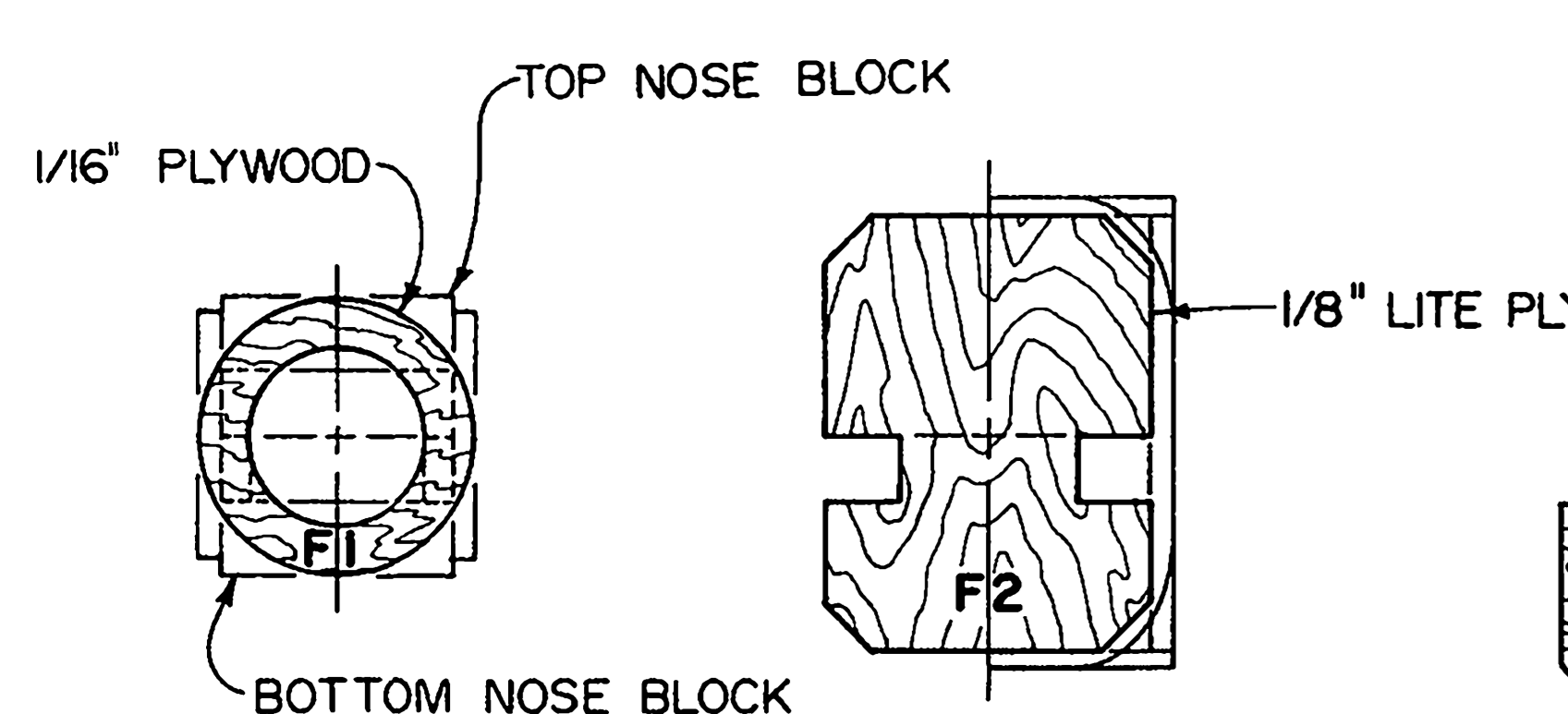


CONTROL SURFACE TRAVEL MOVEMENTS
 RUDDER - 1 3/8" LEFT & RIGHT
 ELEVATOR - 5/8" UP & DOWN
 (MEASURED AT WIDEST POINT)



© ALL COMMERCIAL RIGHTS RESERVED
DAYDREAMER
 AN OS-10 POWERED SPORT DESIGN
 DESIGNED & DRAWN BY *Bob Wallace*
 0 1 2 3 4 5 6
PLAN #1202