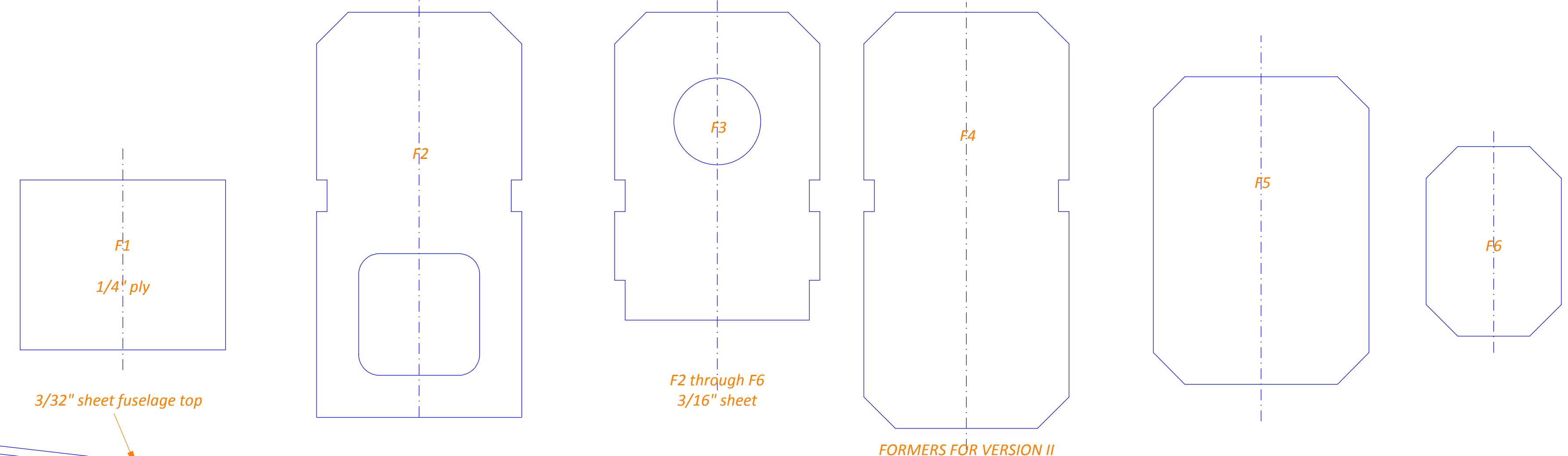
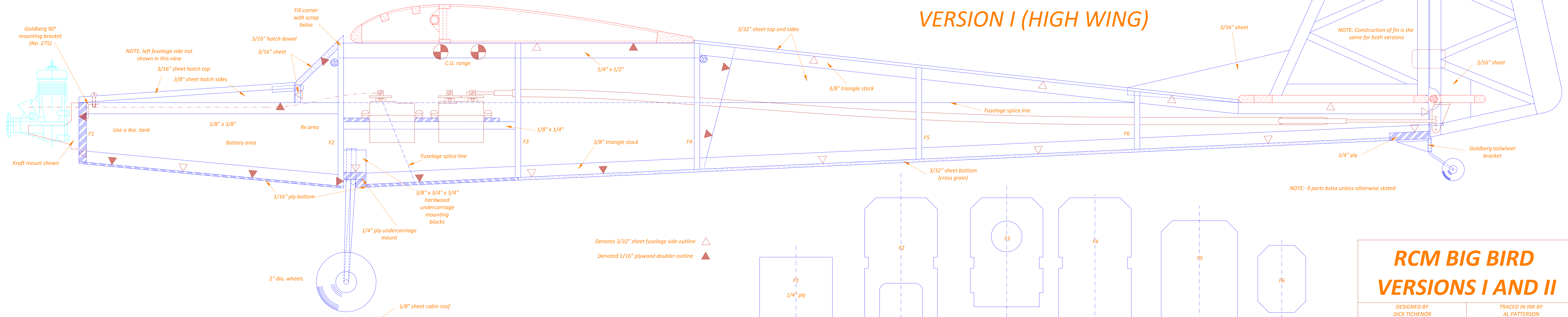


VERSION I (HIGH WING)

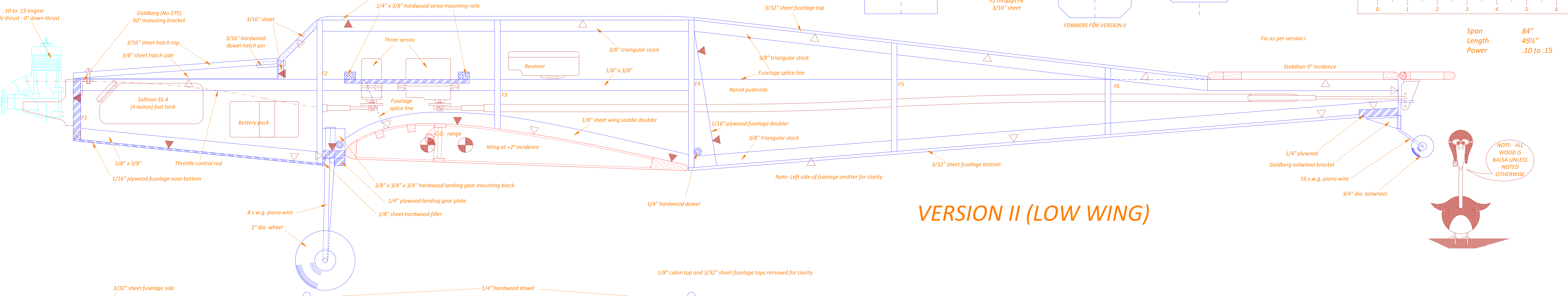


RCM BIG BIRD
VERSIONS I AND II

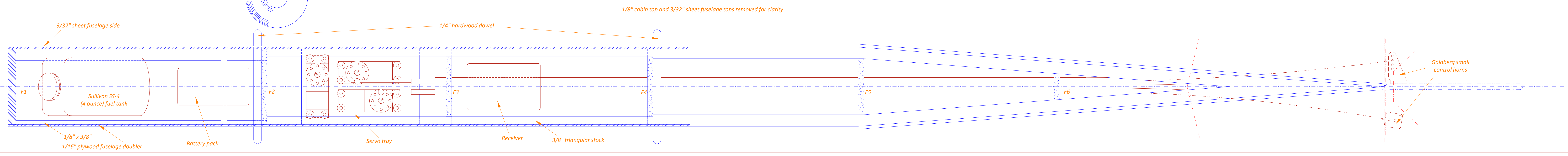
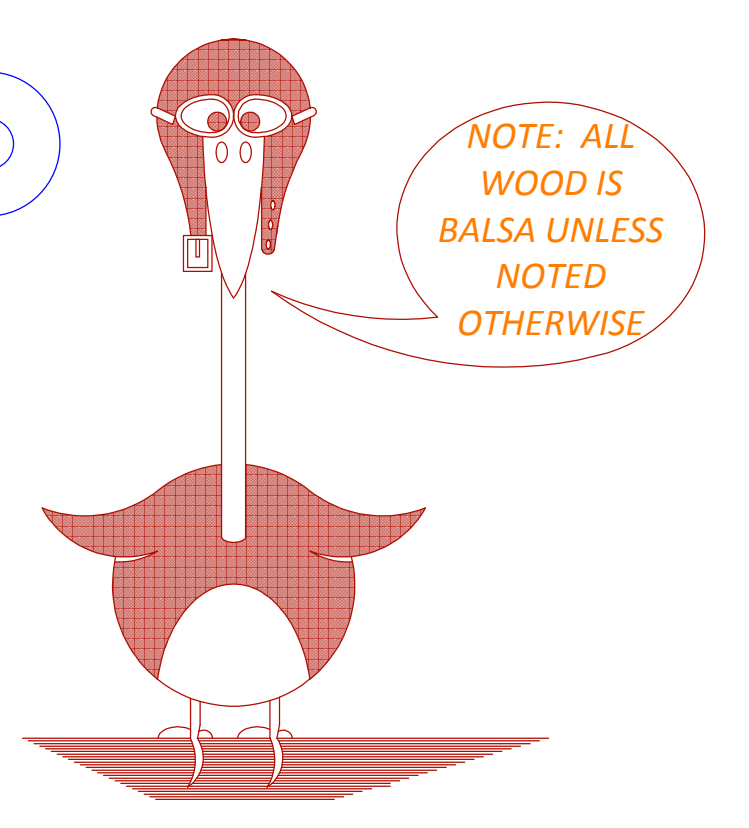
DESIGNED BY
DICK TICHENOR

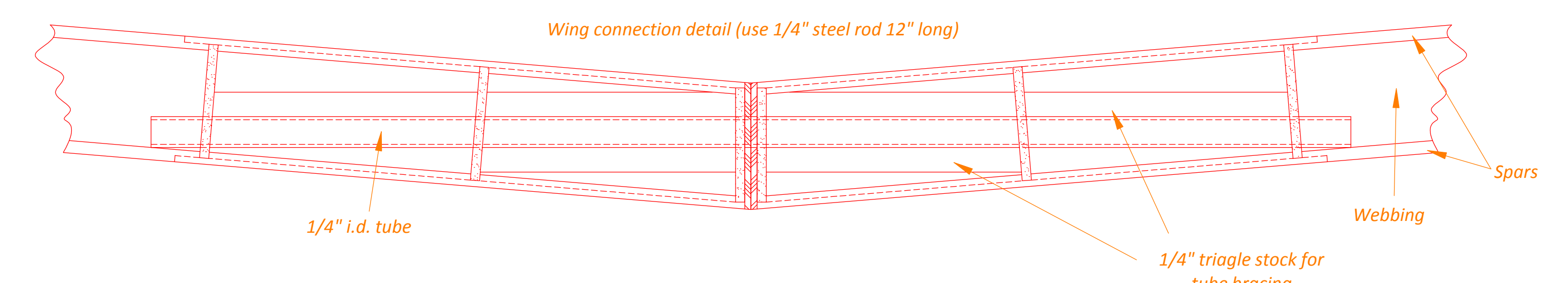
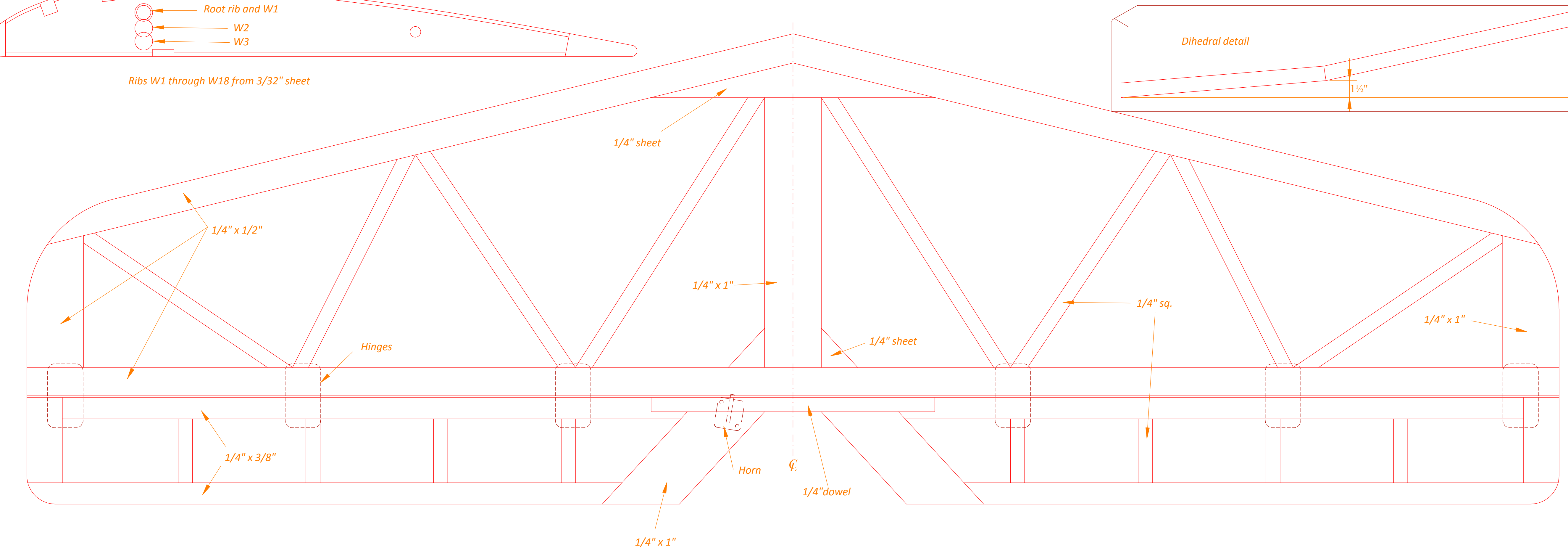
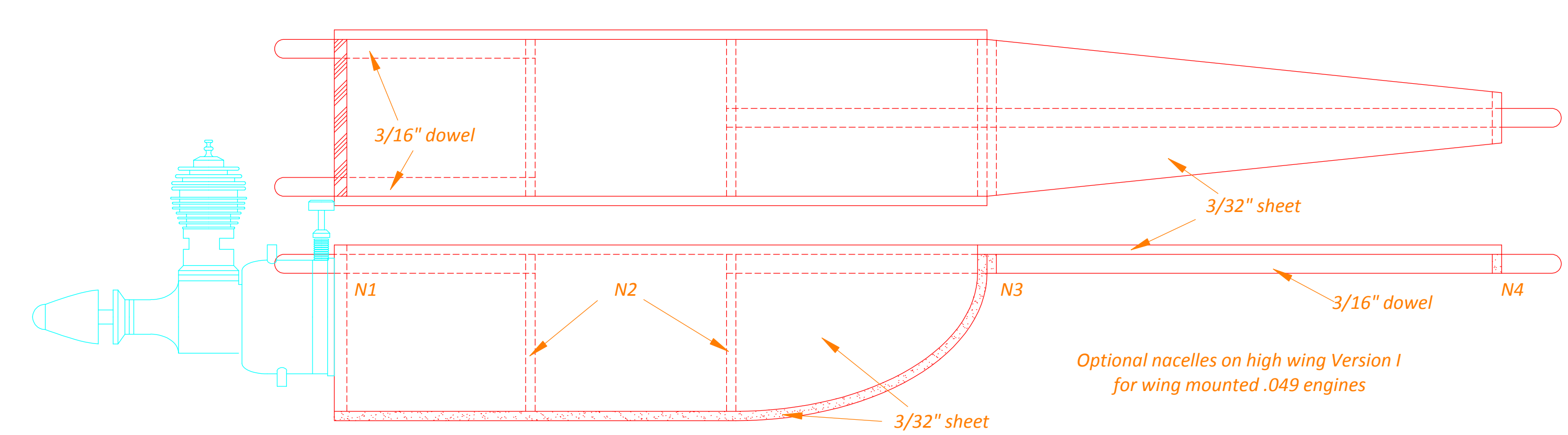
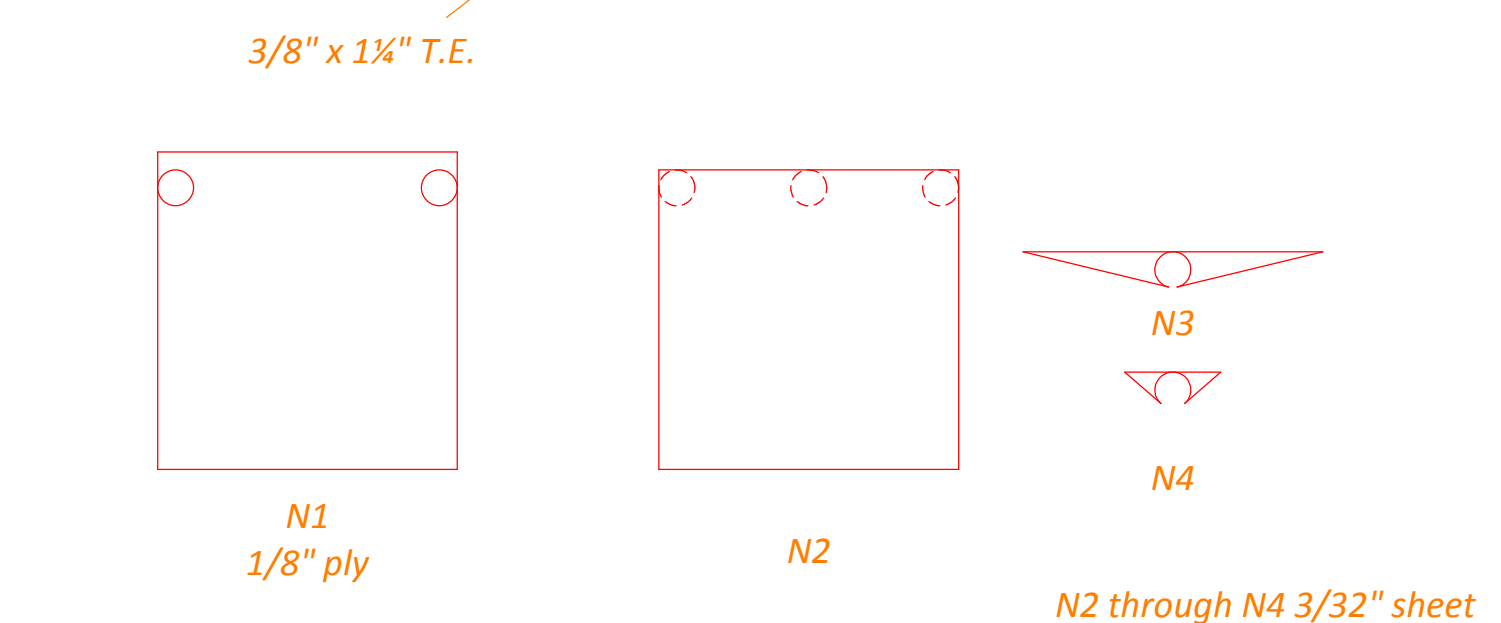
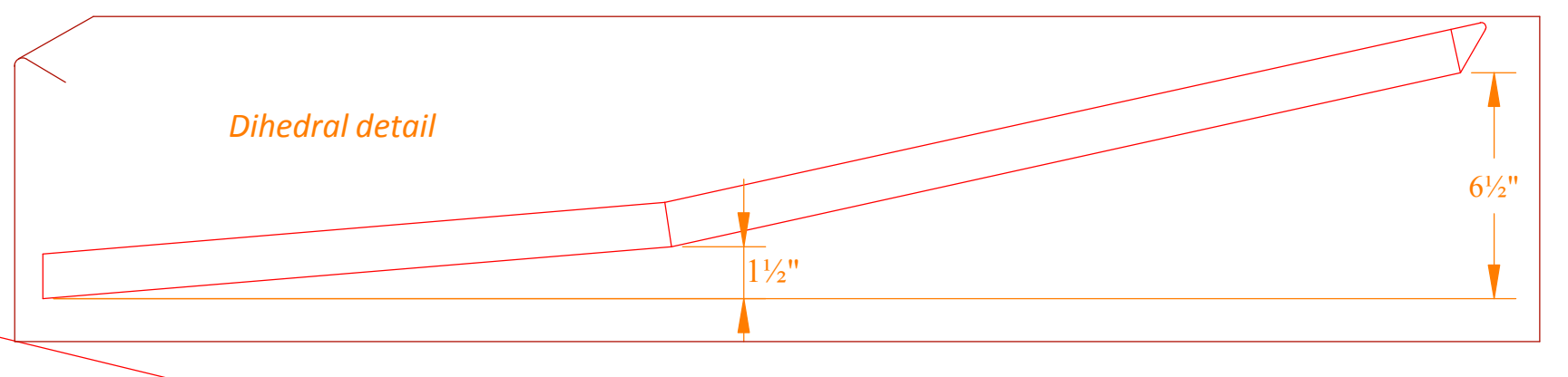
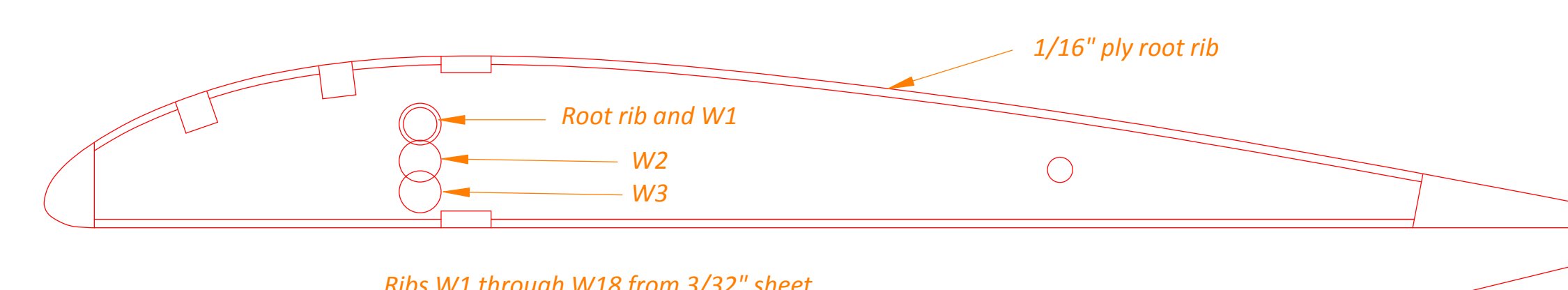
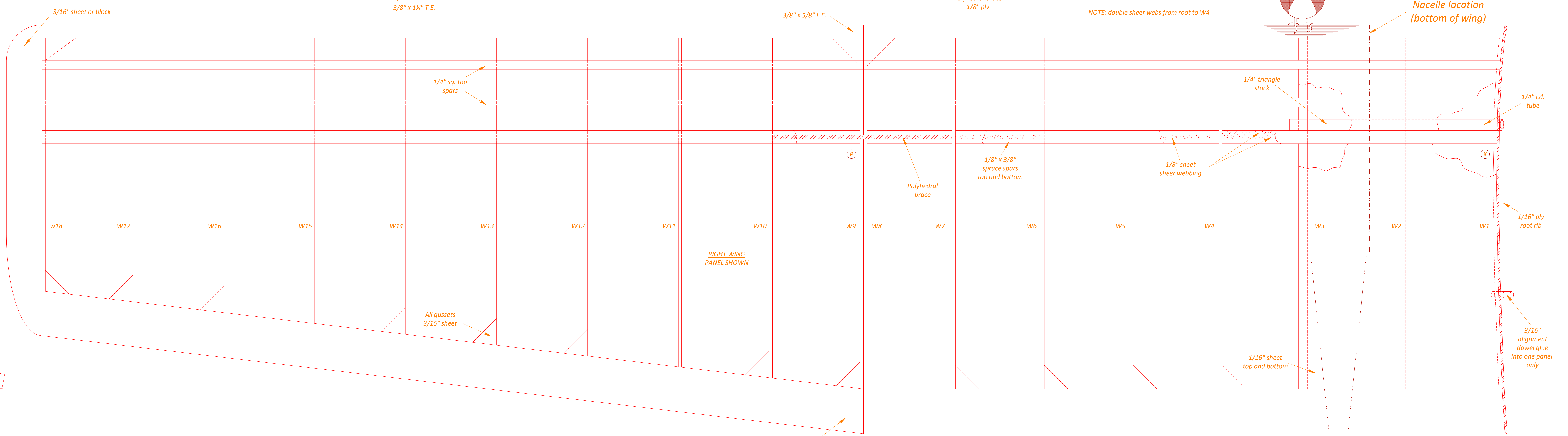
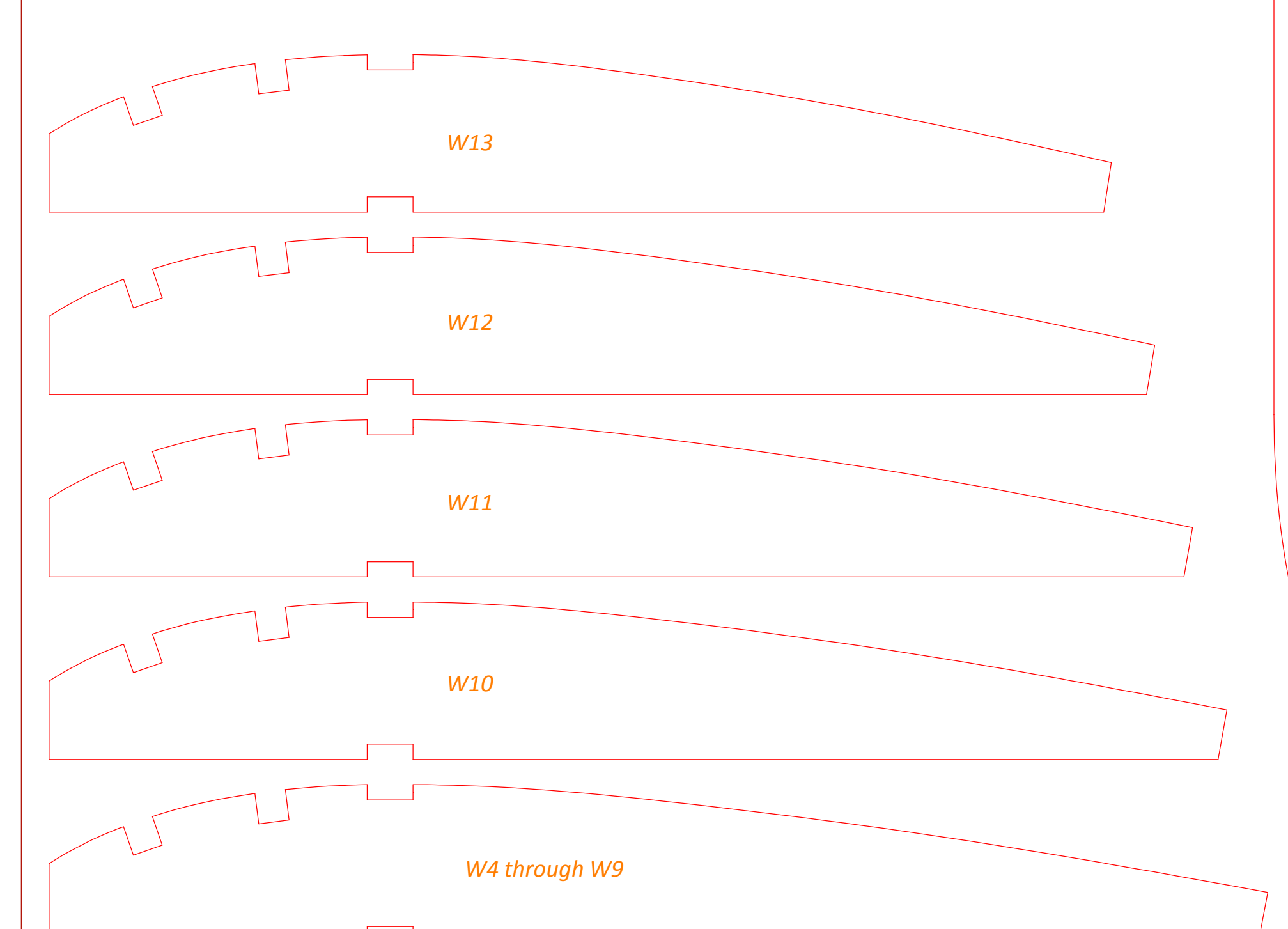
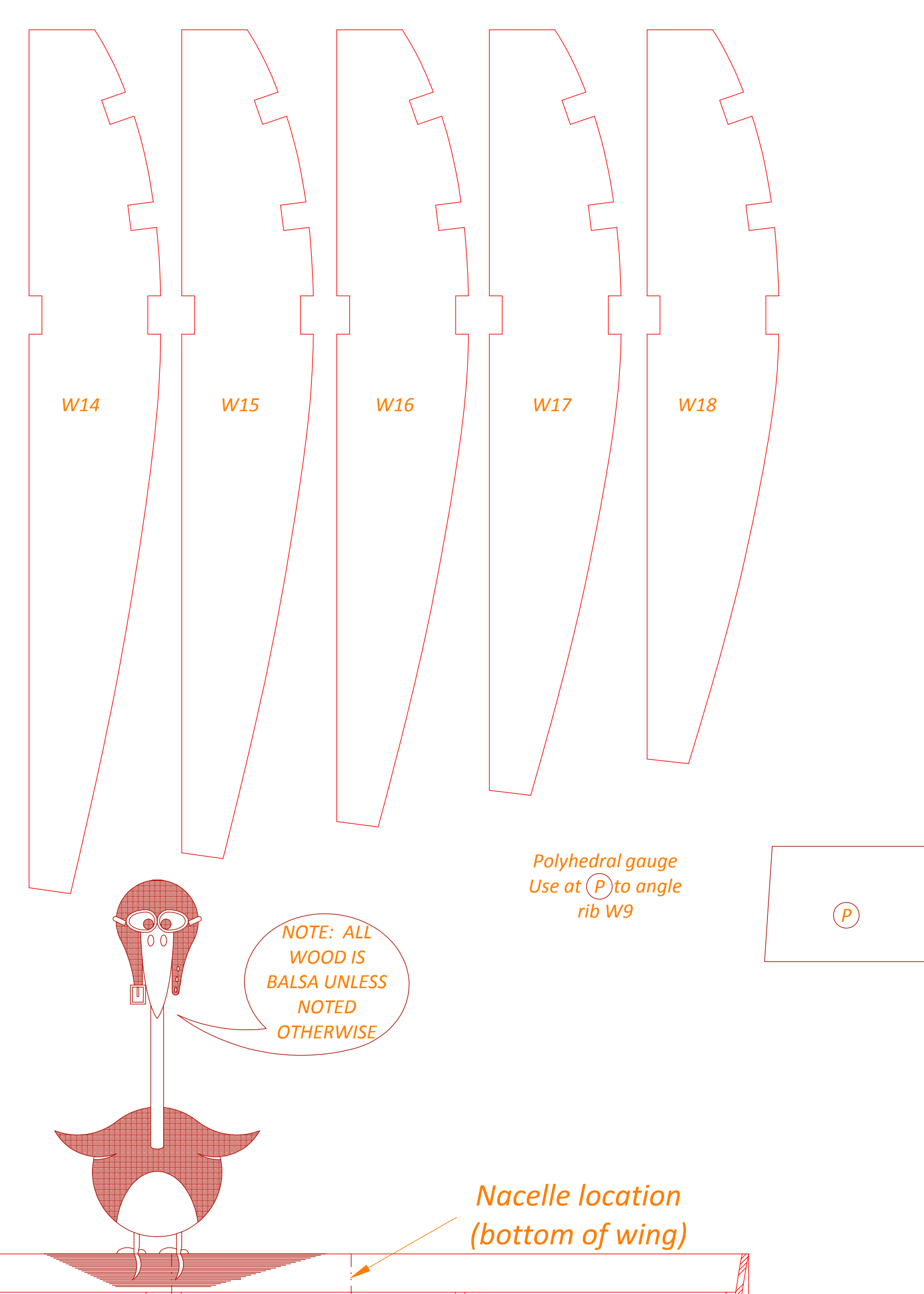
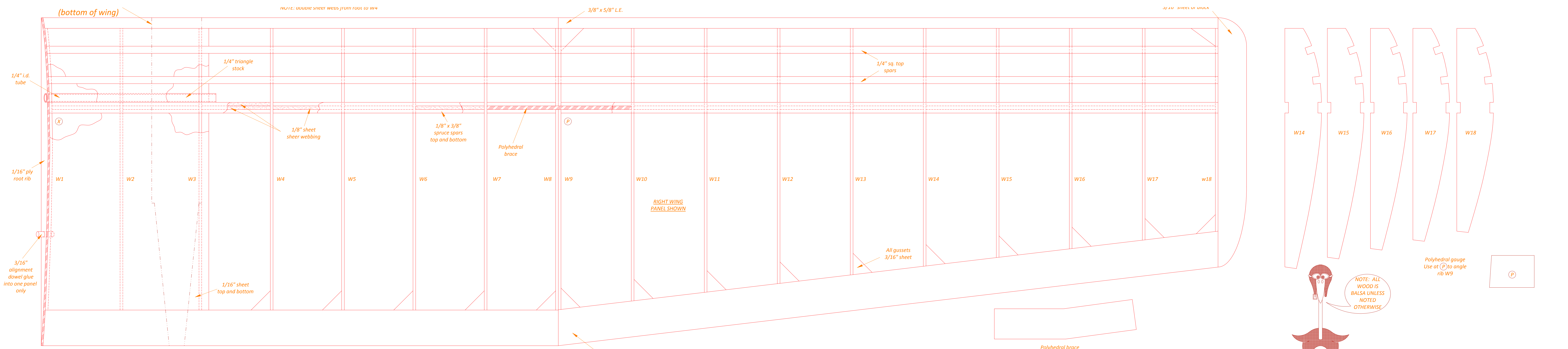
TRACED IN INK BY
AL PATTERSON

Span 84"
Length 49 1/2"
Power .10 to .15



VERSION II (LOW WING)





Span 84"
Length 49 1/2"
Power .10 to .15

RCM BIG BIRD
VERSIONS I AND II

DESIGNED BY DICK TICHENDOR
TRACED IN INK BY AL PATTERSON