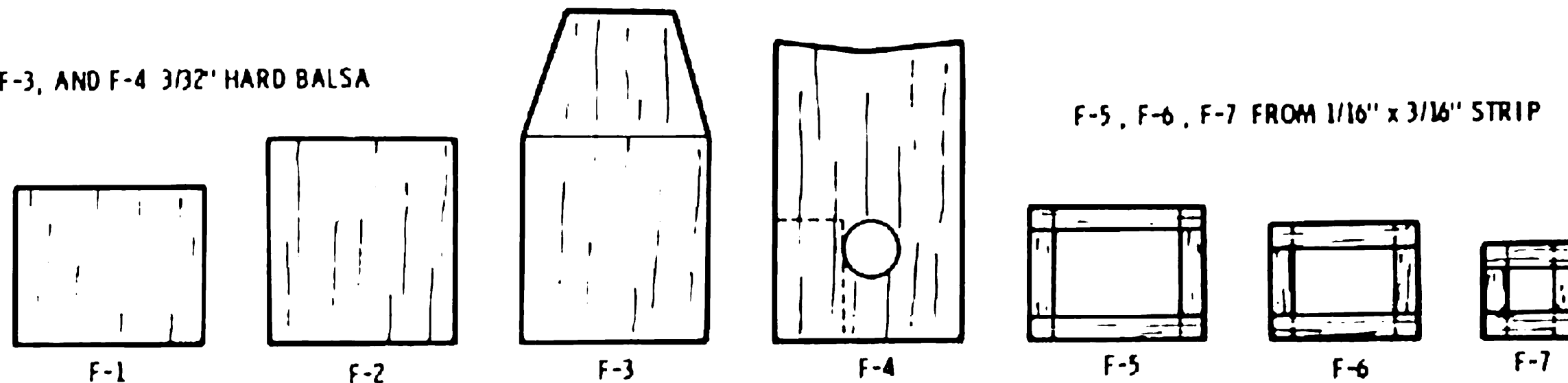
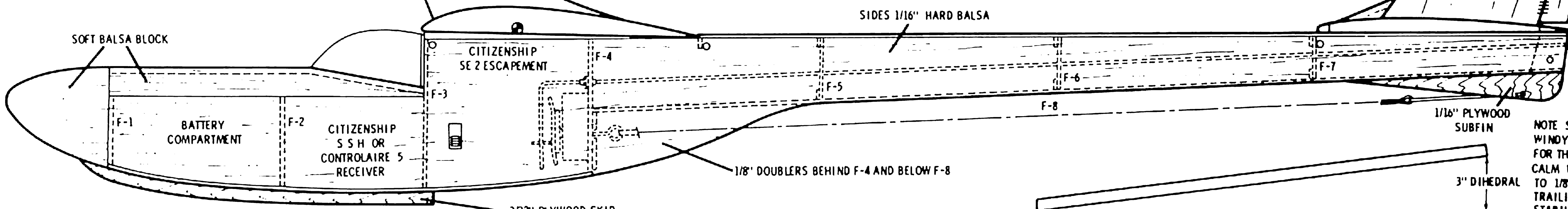


F-1, F-2, F-3, AND F-4 3/32" HARD Balsa

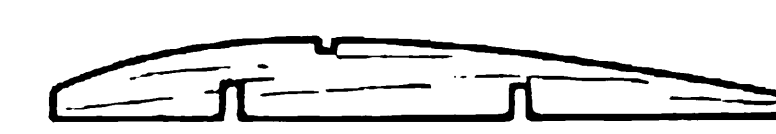
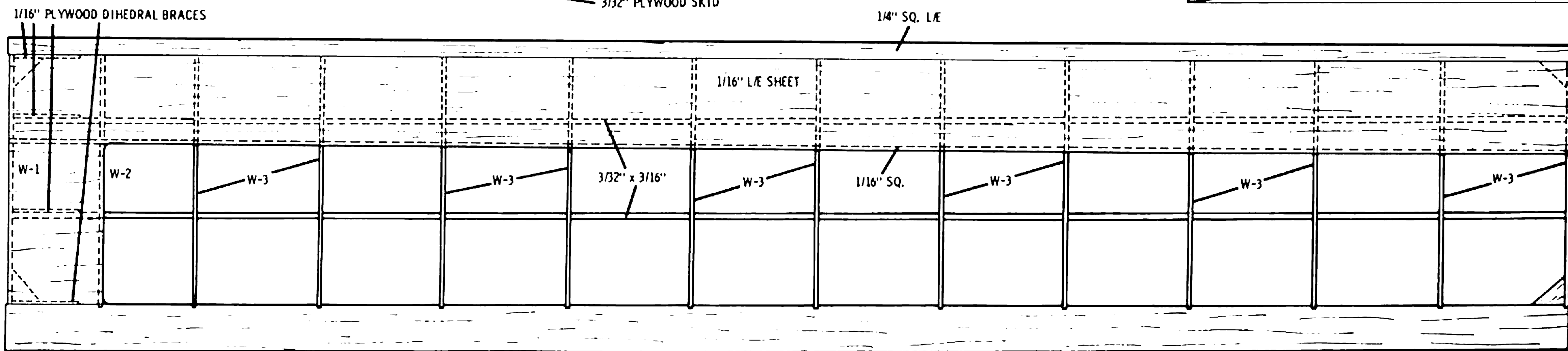


1/16" SHEET
FIN & RUDDER



NOTE STABILIZER SET FOR WINDY WEATHER FLYING OR CALM WEATHER ADD 1/16" TO 1/8" SHIM UNDER TRAILING EDGE OF STABILIZER

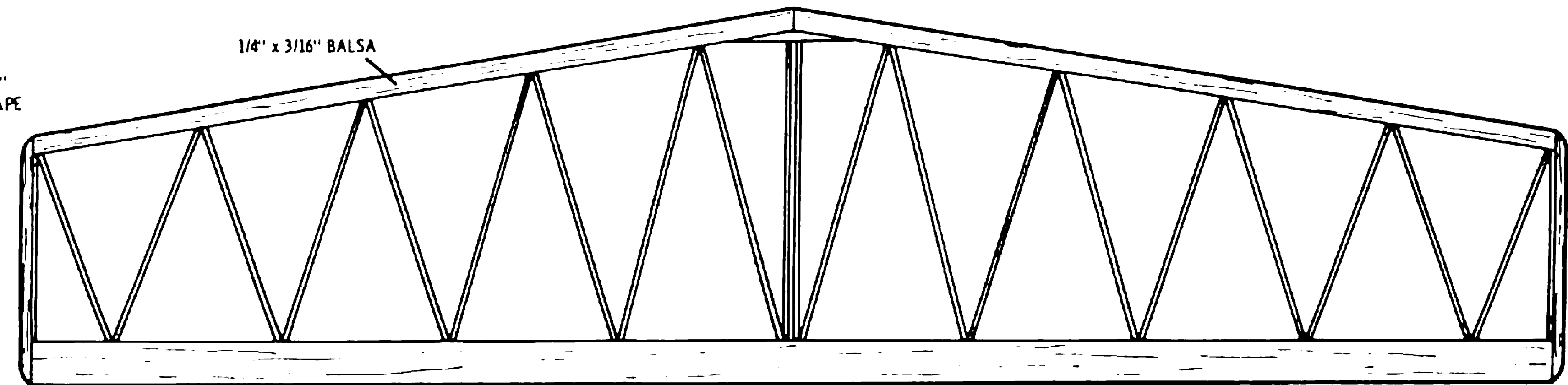
1/16" PLYWOOD DIHEDRAL BRACES



ALL RIBS 1/16" SHEET

1/8" SHEET TIP

STAB RIBS 1/16" x 1/4" SAND TO AIRFOIL SHAPE AFTER ASSEMBLY



RADIO CONTROL modeler MAGAZINE

TERN

DESIGNED & DRAWN BY	C. ANDERSON	INKED BY	G. FLORES
---------------------	-------------	----------	-----------