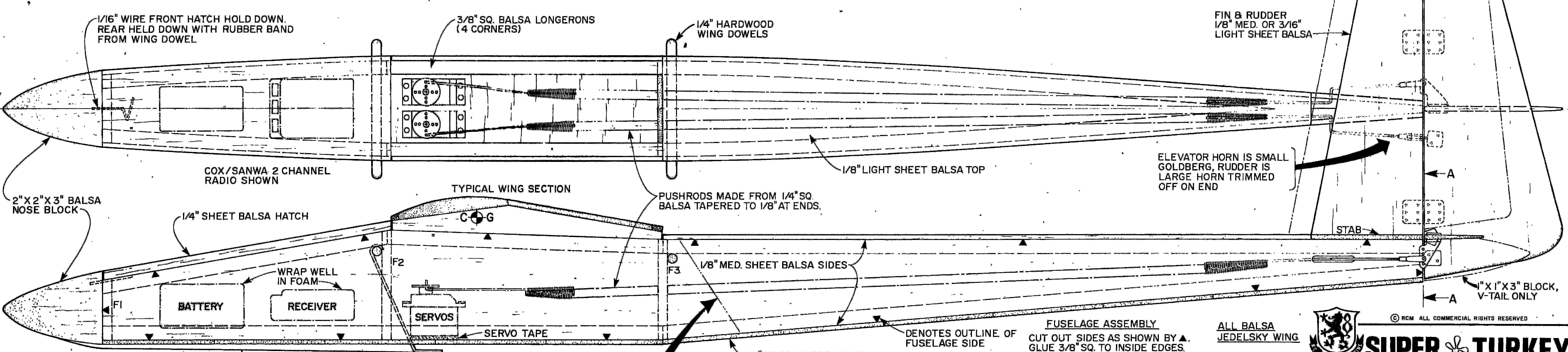
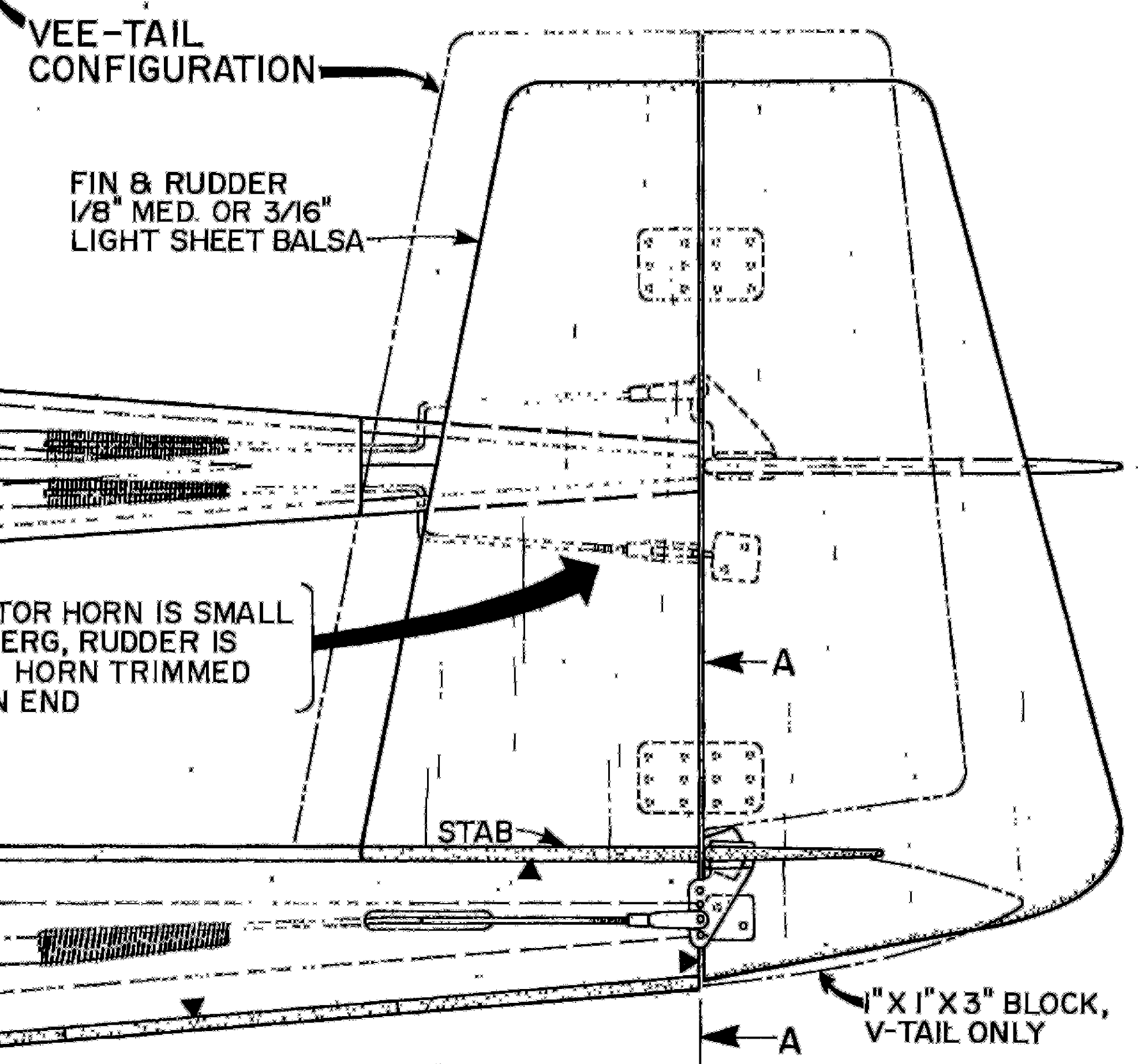
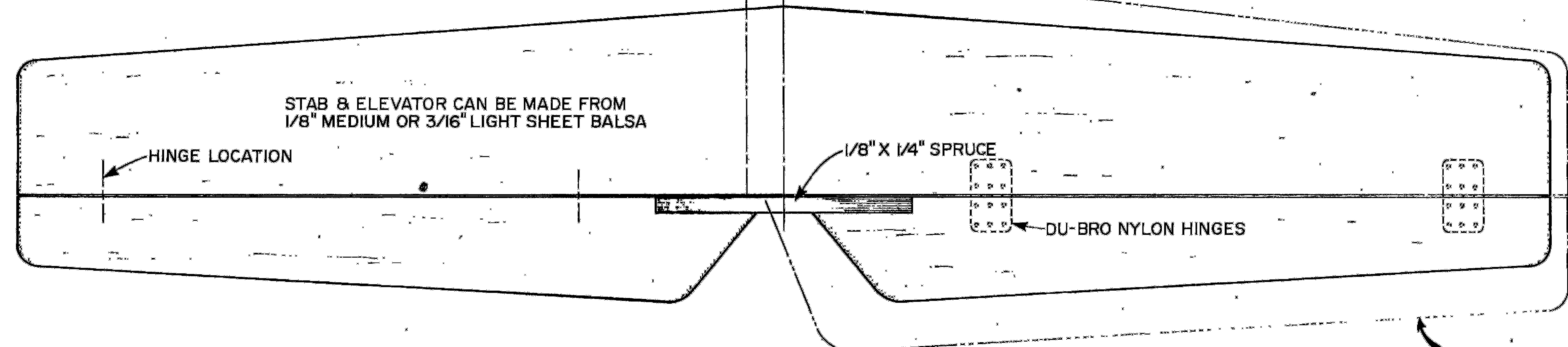
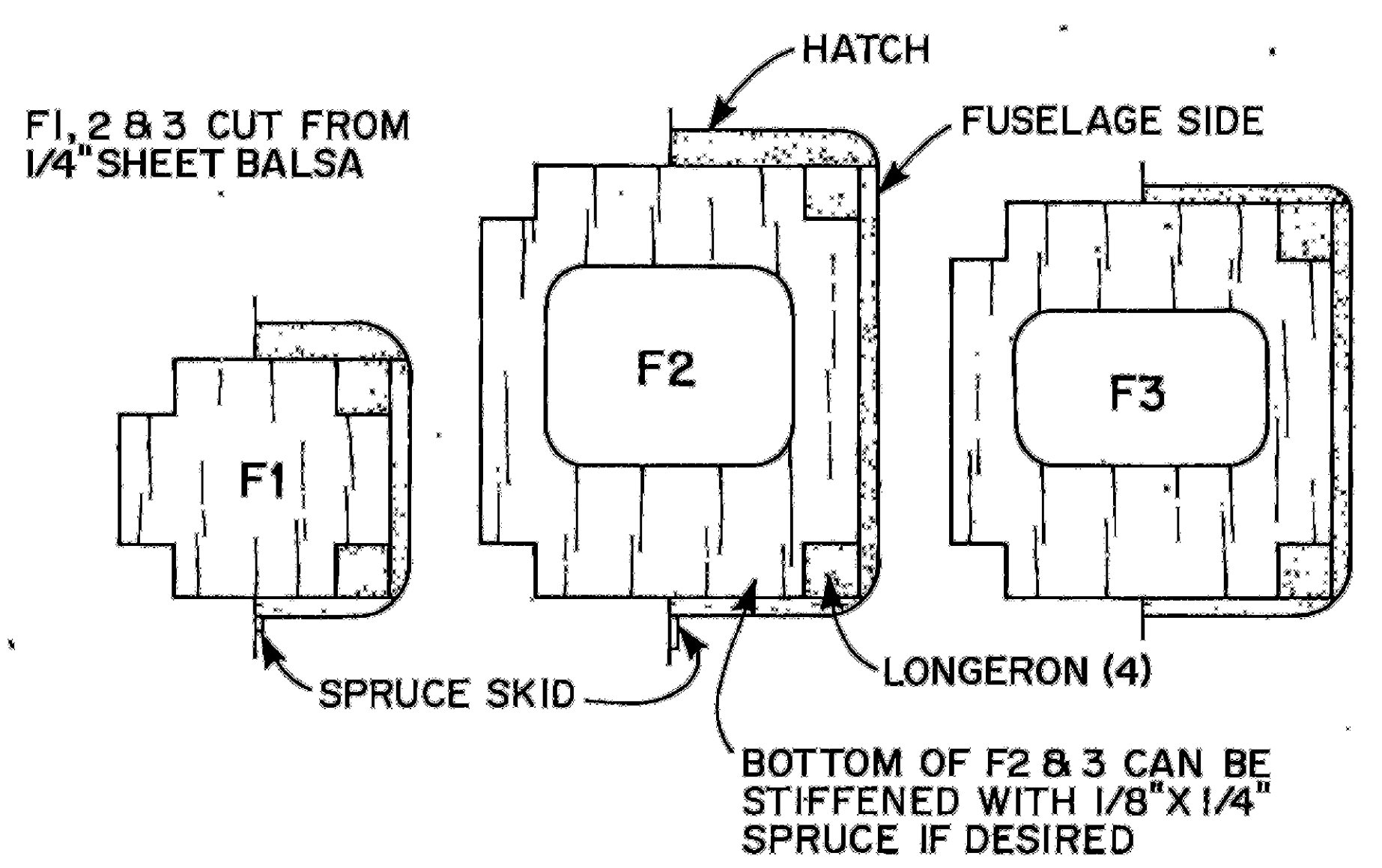
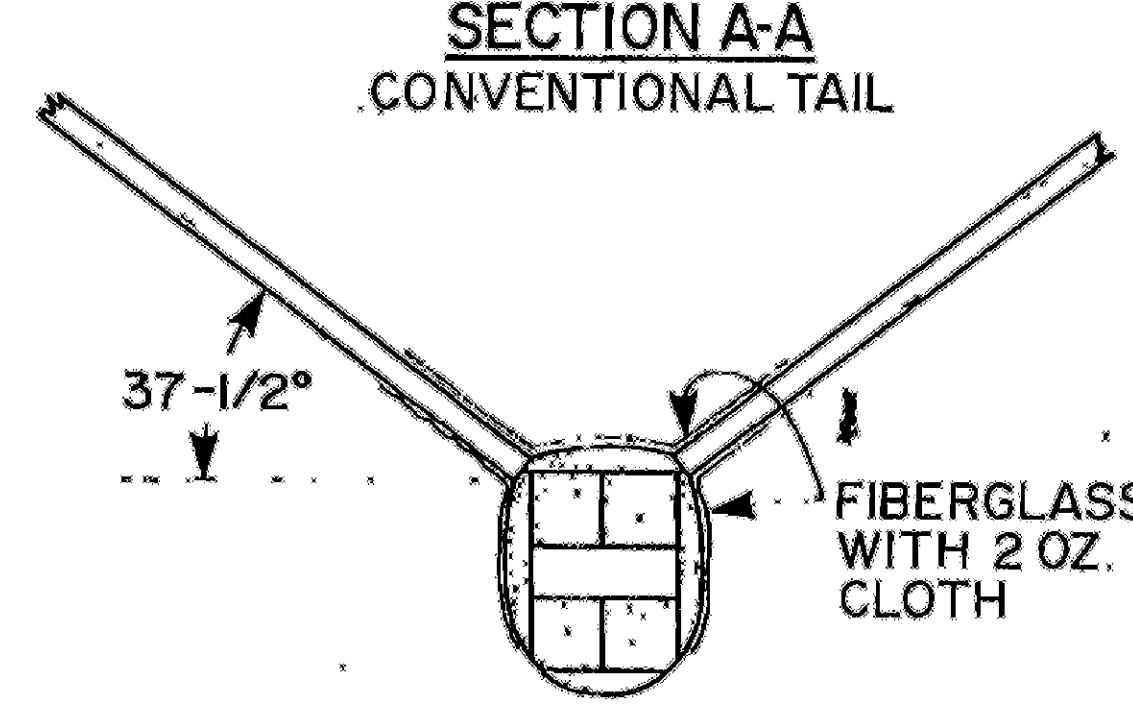
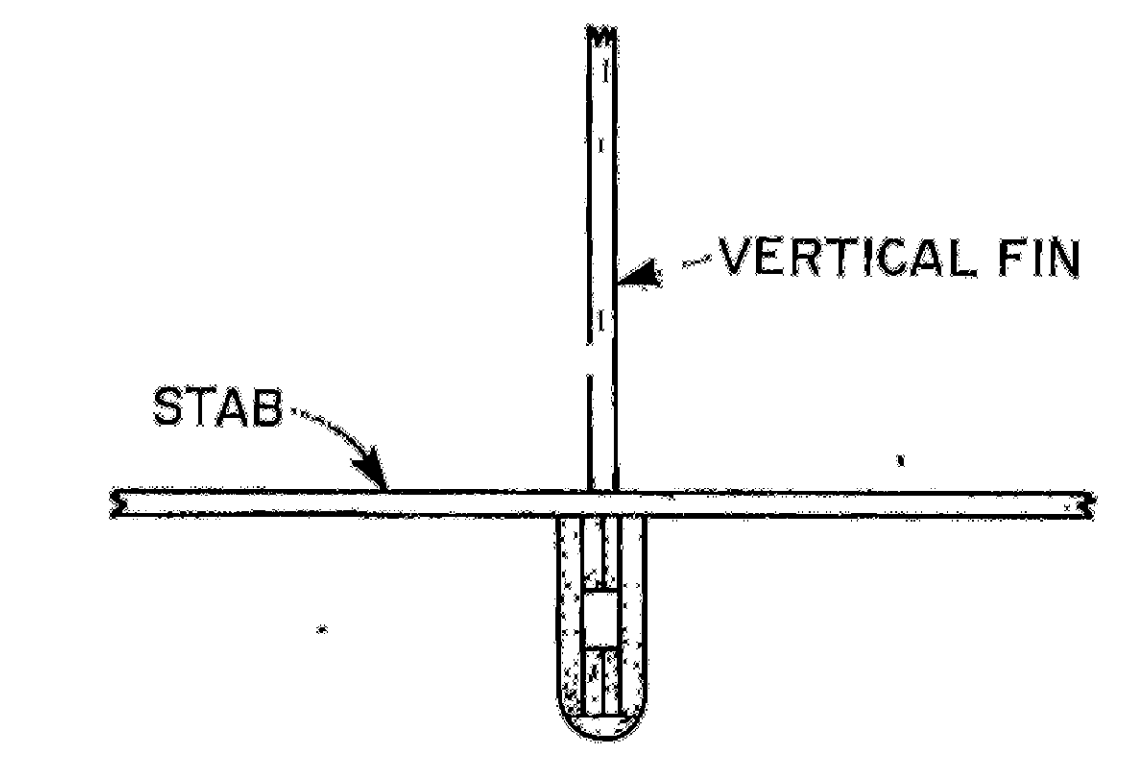


NOTE: FIBERGLASS WING JOINTS ON TOP & BOTTOM (IMPORTANT)

WING ASSEMBLY
 MARK RIB LOCATIONS ON 3/8\" SHEET & GLUE ON RIBS. TURN OVER, GLUE ON 1/8\" SHEET, L.E. & T.E. RAZOR PLANE OR SAND 3/8\" SHEET TO AIRFOIL. CUT, BEVEL, GLUE & FIBERGLASS POLYHEDRAL JOINTS.



NOTE: FIBERGLASSING CAN BE DONE WITH HOBBYOXY FORMULA 2 & GLASS CLOTH, OR POLYESTER RESIN & GLASS CLOTH.

FUSELAGE ASSEMBLY
 CUT OUT SIDES AS SHOWN BY ▲. GLUE 3/8\"/>

ALL Balsa JEDELSKY WING

DESIGNED BY:
 KEN HAMLYN
 DON HAMLYN
 MIKE REAGAN
 BILL WATSON

© RCM ALL COMMERCIAL RIGHTS RESERVED

DRAWN BY BILL WATSON INKED BY DICK KIDD