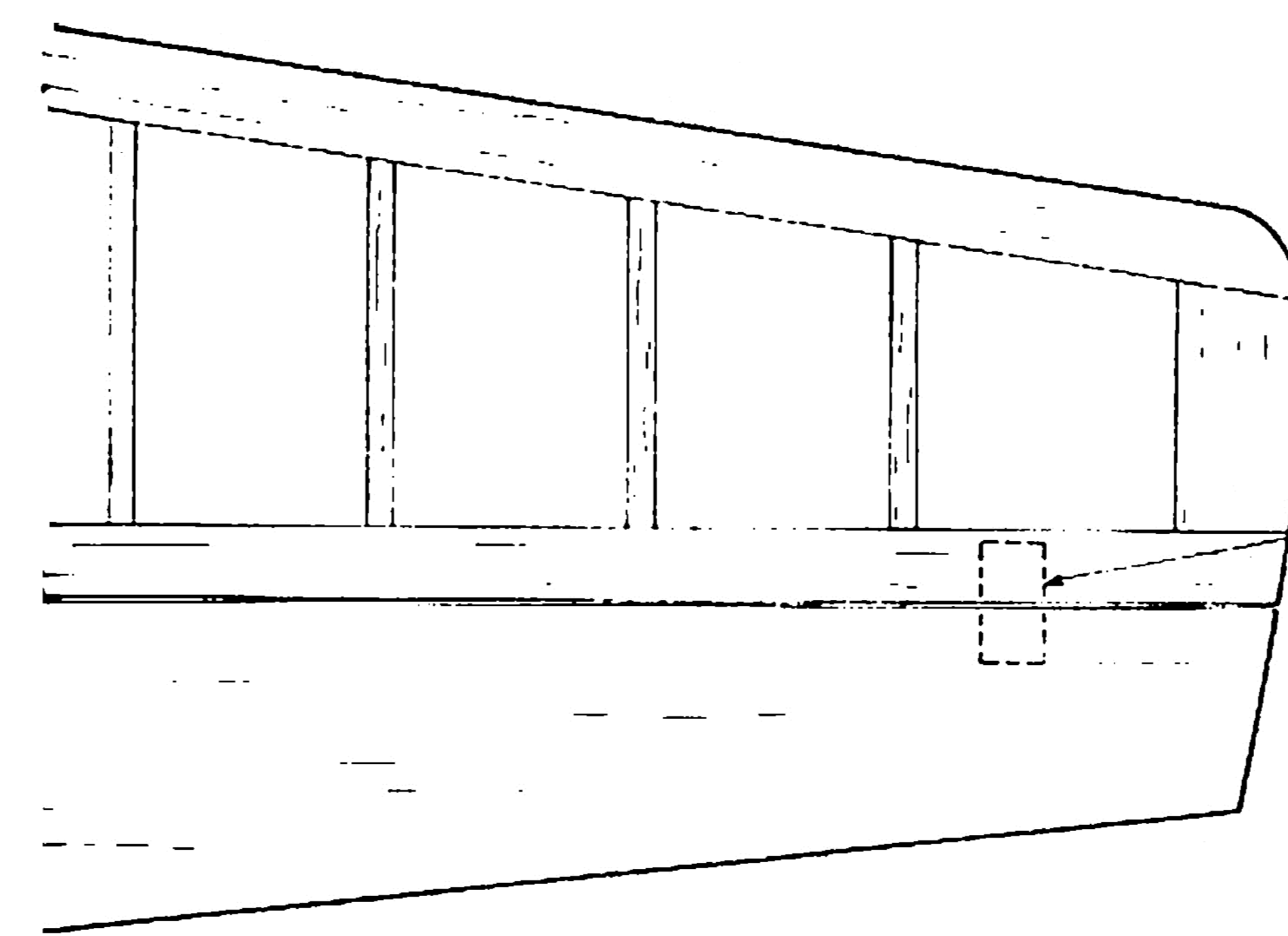
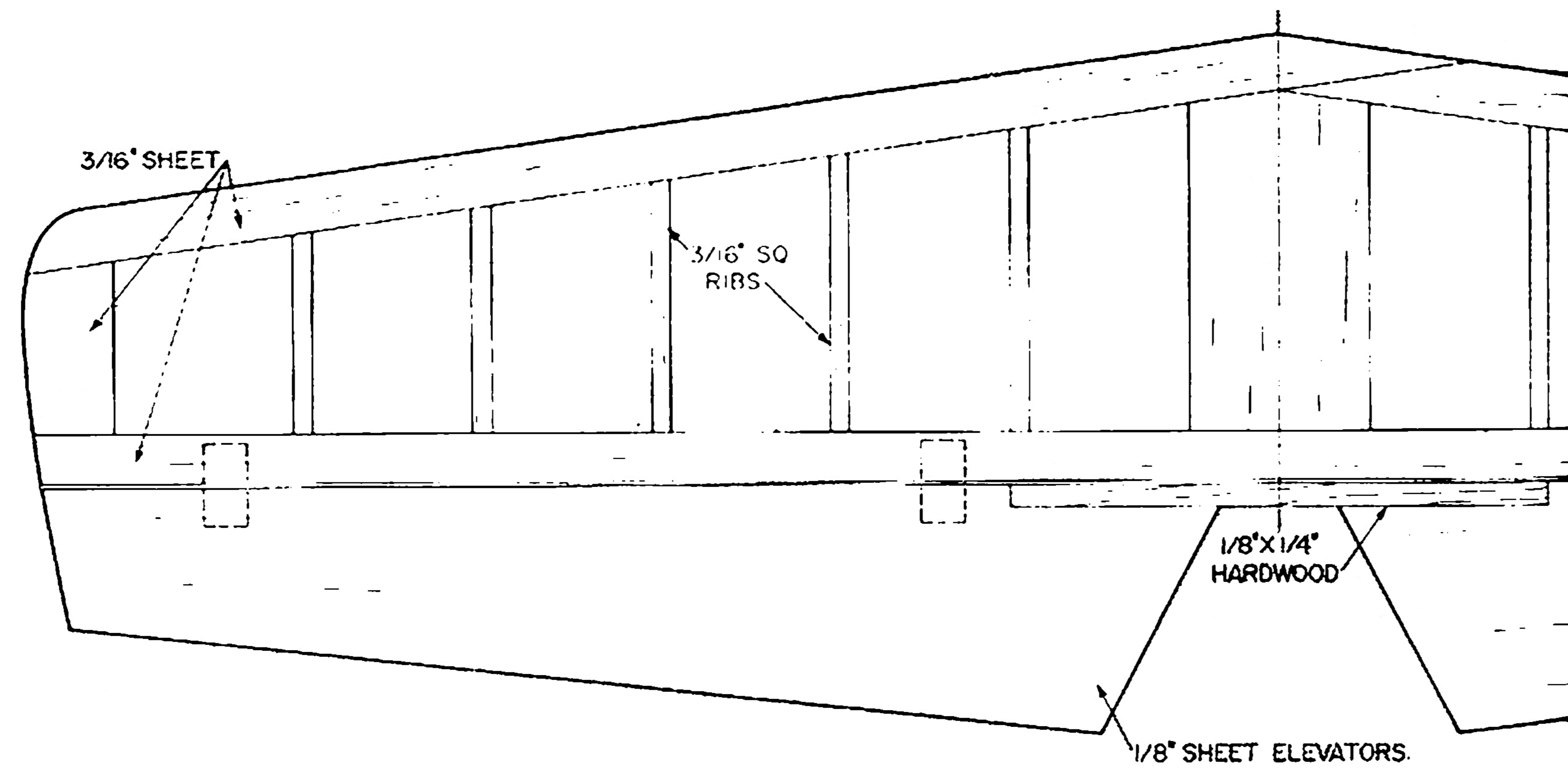
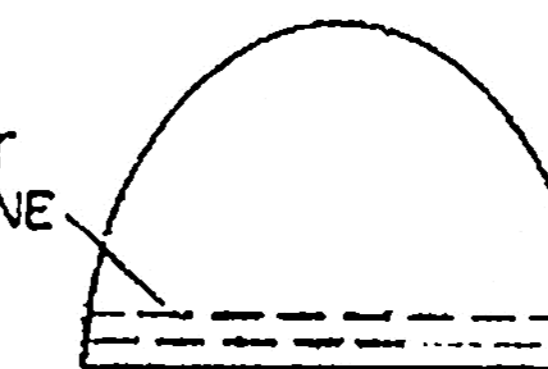


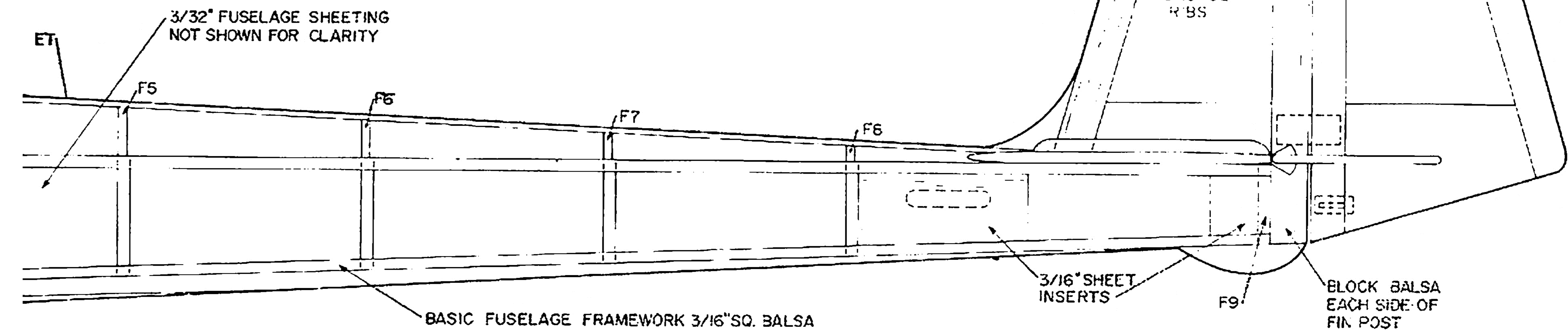
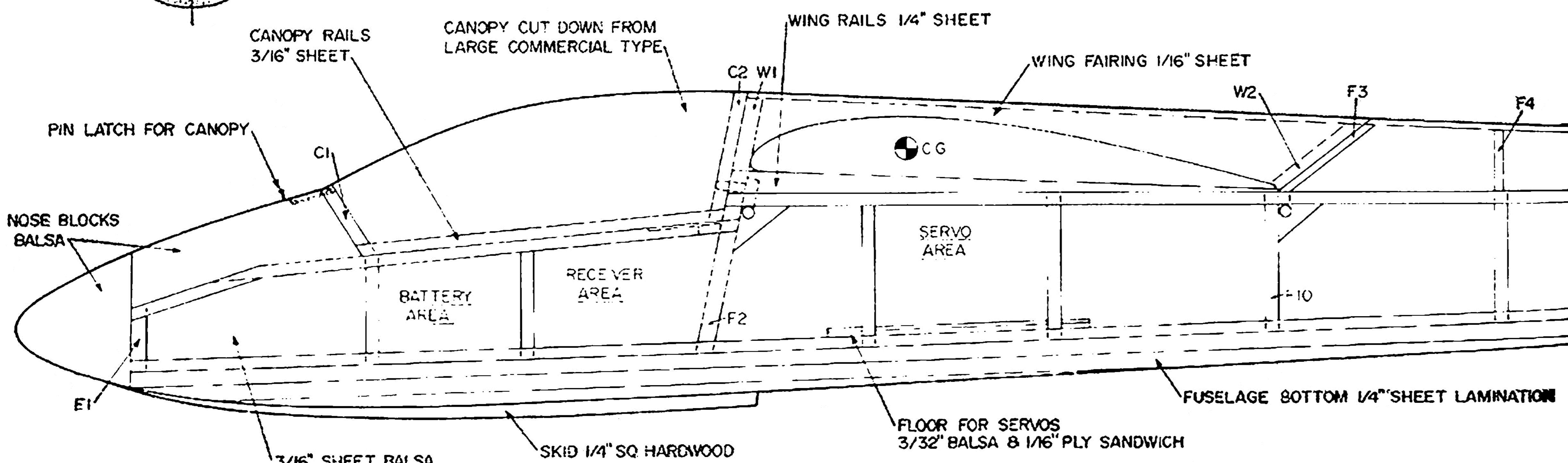
SECTION AT FRAME F2



W2 3/16" SHEET CUT TO THIS LINE

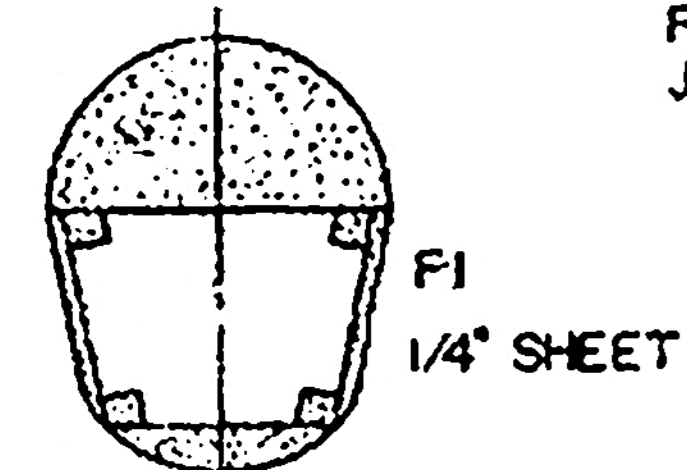


F3 1/8" SHEET



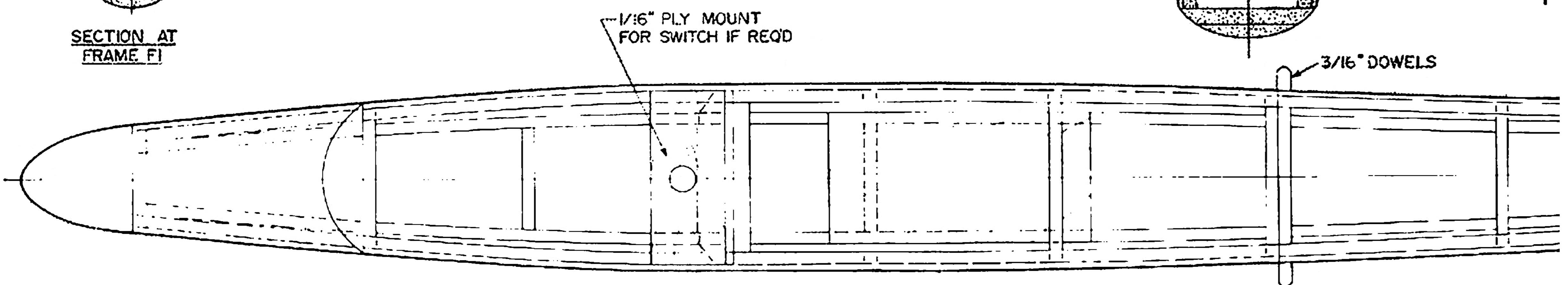
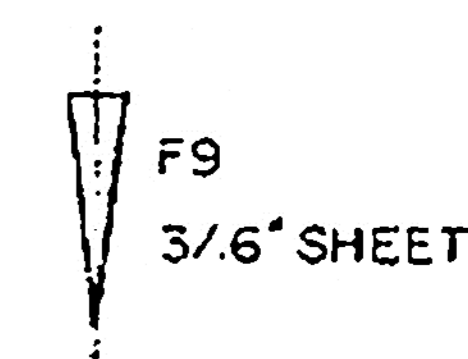
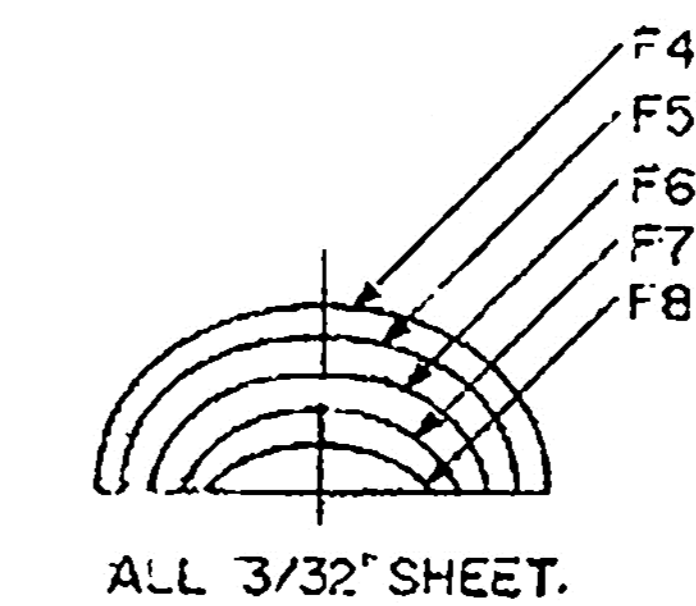
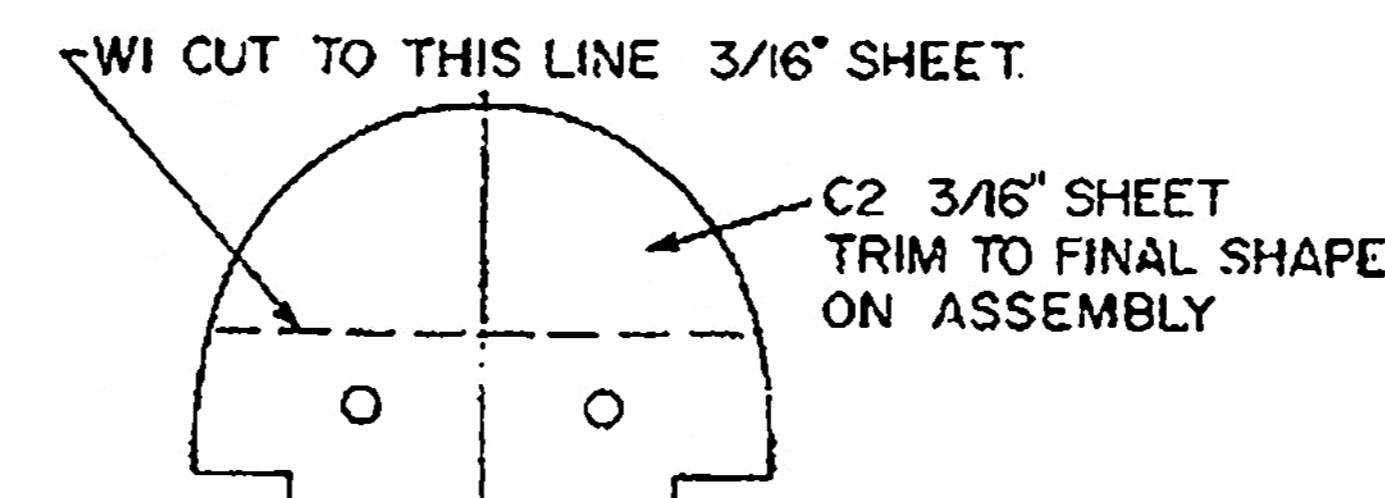
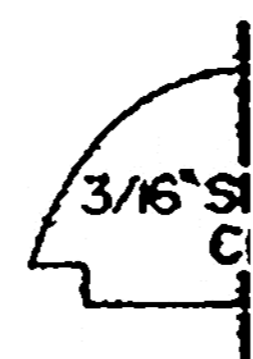
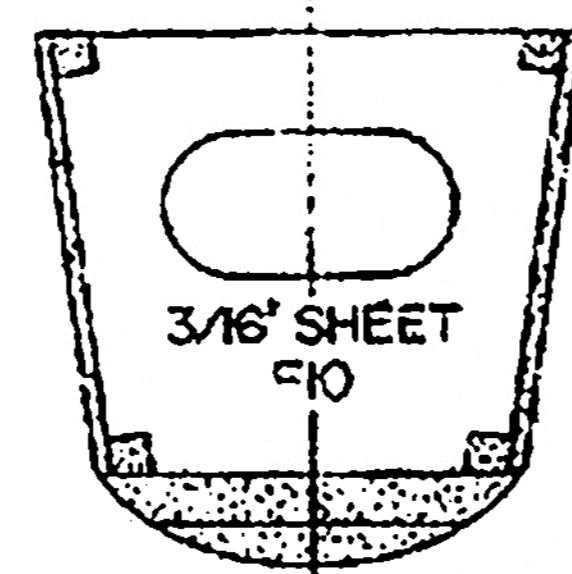
BASIC FUSELAGE FRAMEWORK 3/16" SQ. BALS

BLOCK BALS EACH SIDE OF FIN POST



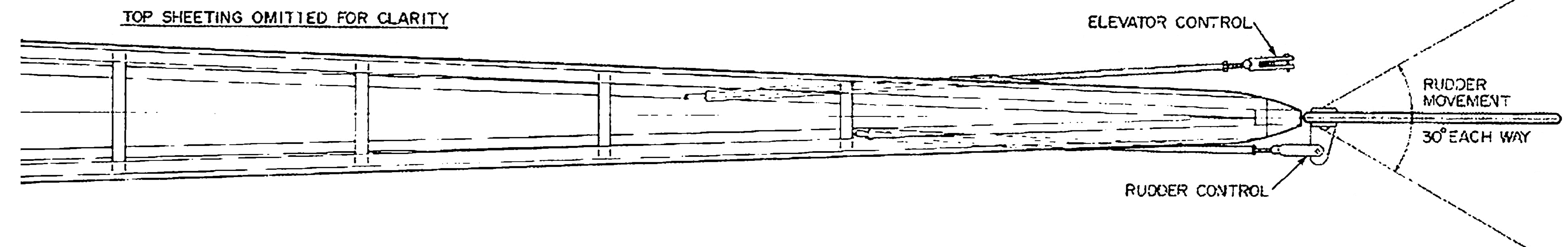
SECTION AT FRAME F1

SECTION AT F10



1/16" PLY MOUNT FOR SWITCH IF REQD

3/16" DOWELS

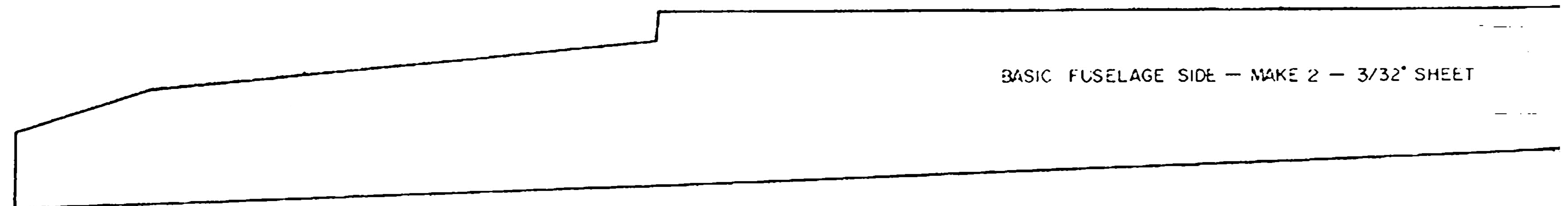


TOP SHEETING OMITTED FOR CLARITY

ELEVATOR CONTROL

RUDDER CONTROL

RUDDER MOVEMENT 30° EACH WAY



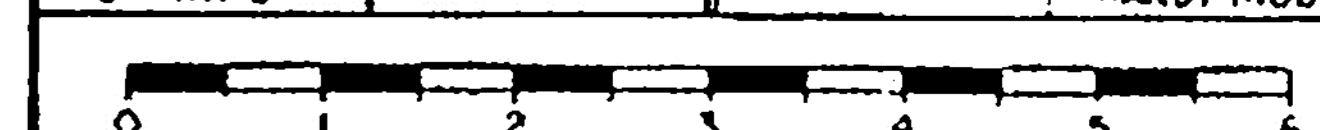
BASIC FUSELAGE SIDE - MAKE 2 - 3/32" SHEET

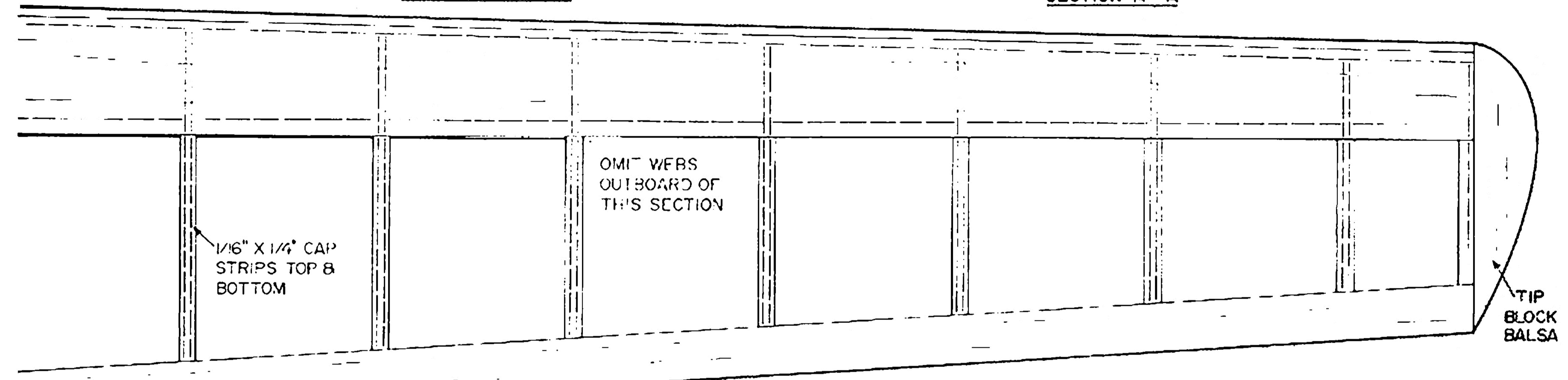
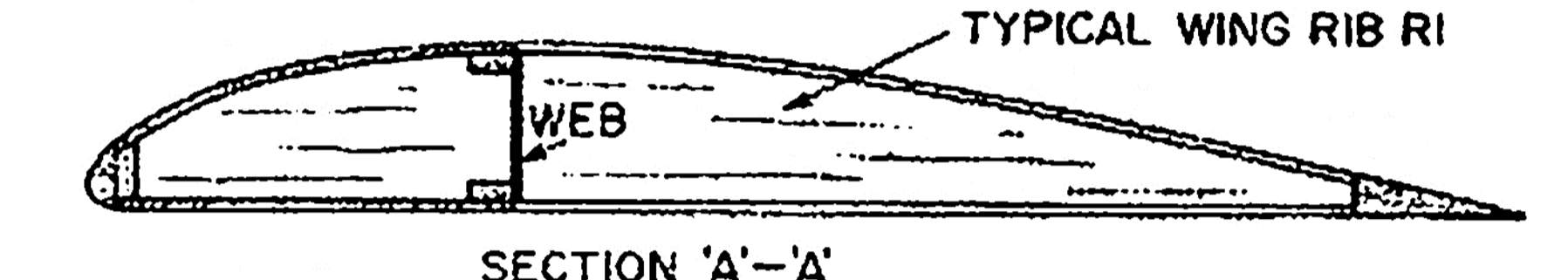
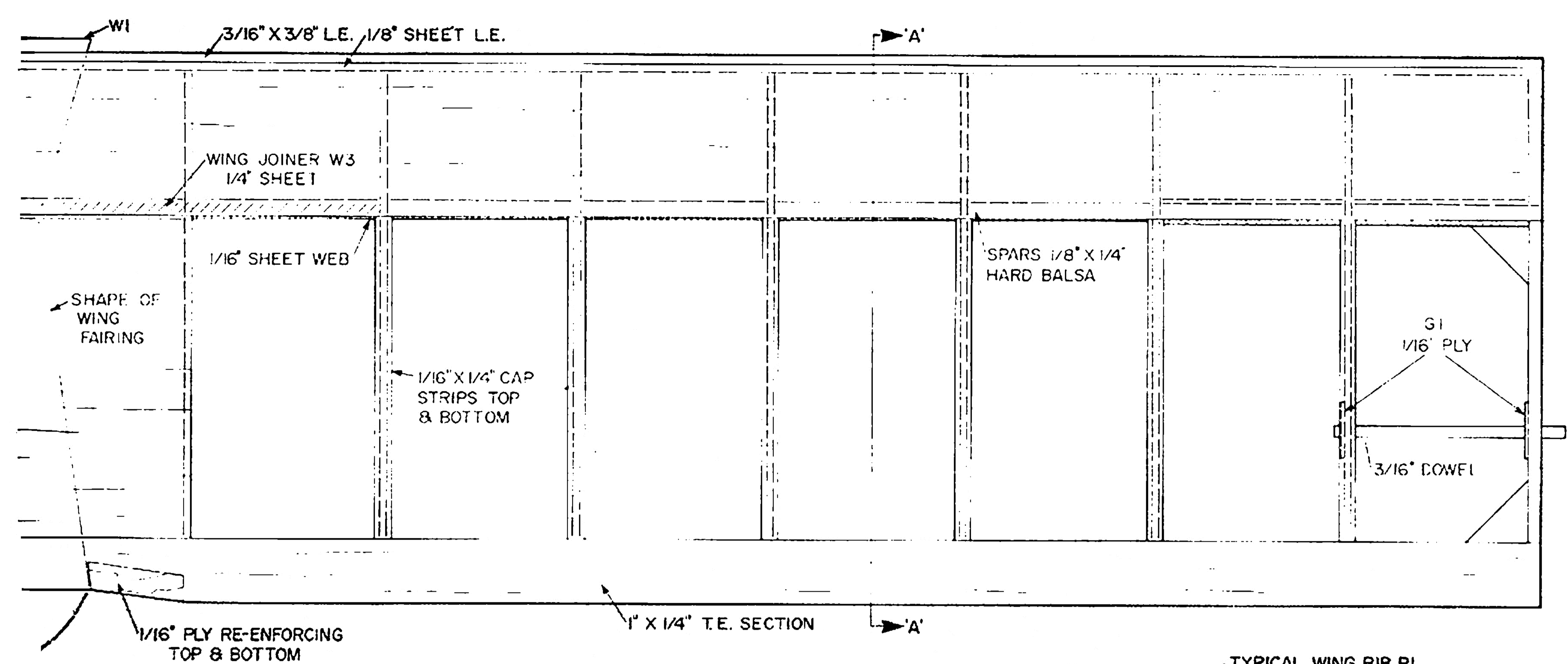
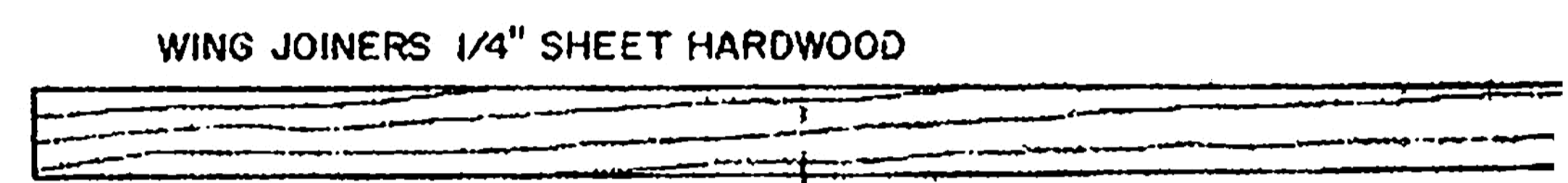
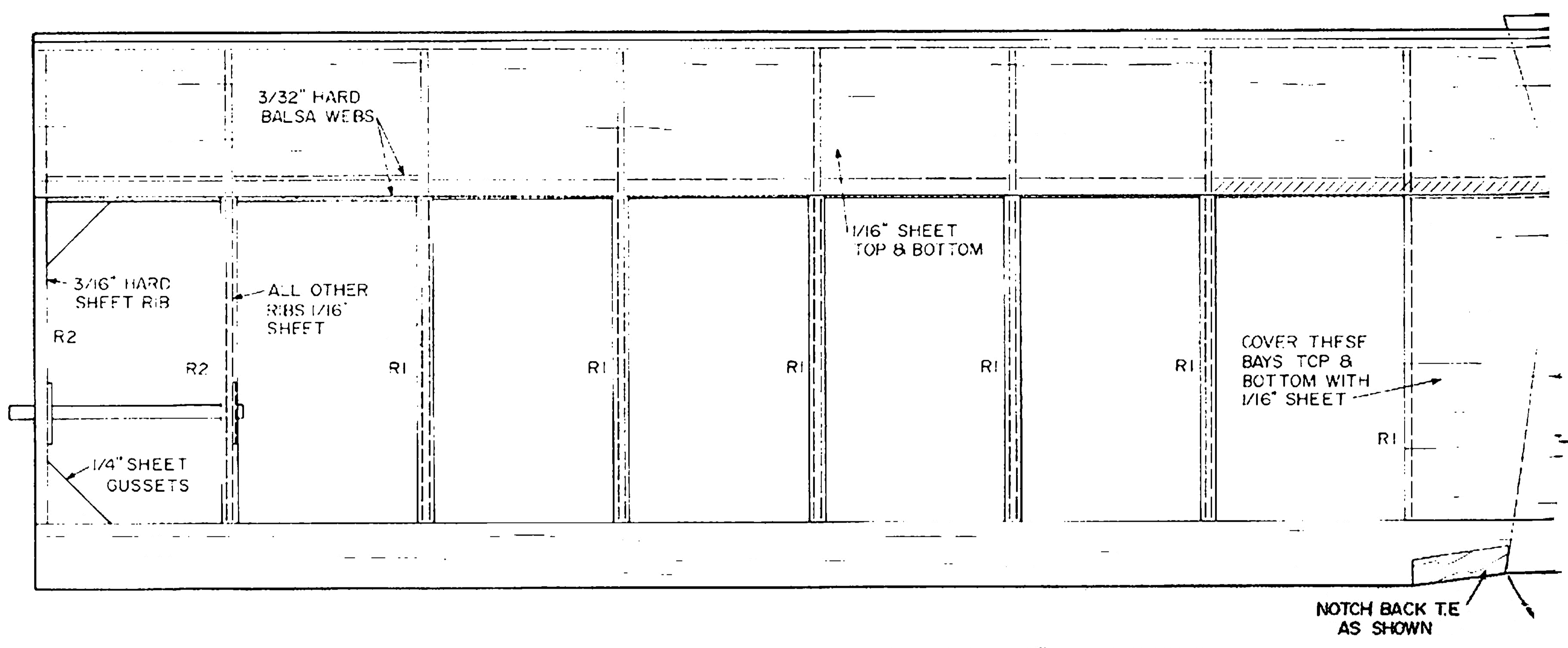


PLATE 1 OF 2

SLINGSBY
SKYLARK 4

DESIGNED & DRAWN BY JACK HEADLEY
CHECKED BY DICK HODD
RANBY KIDD

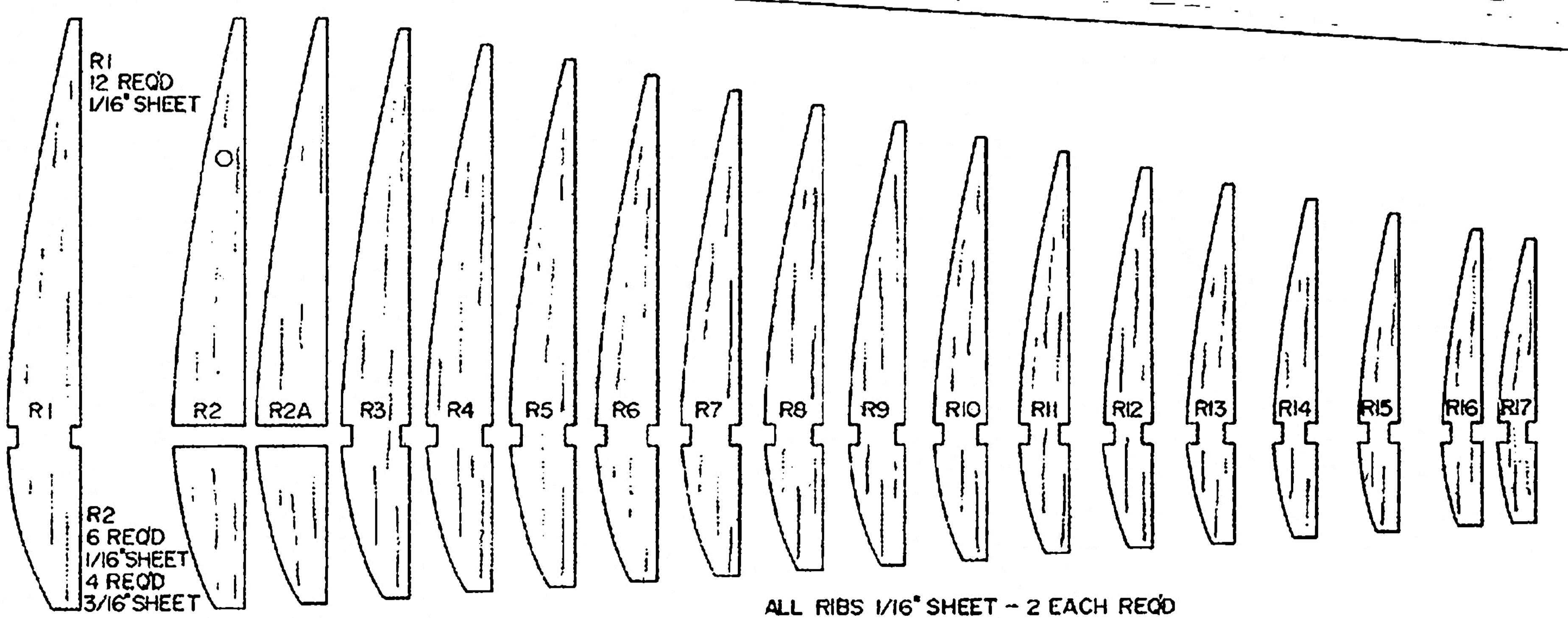
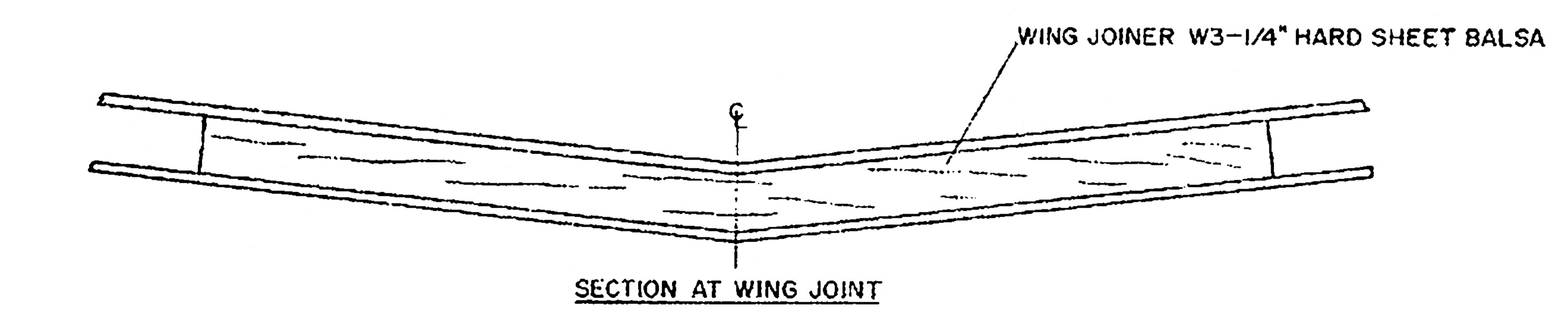
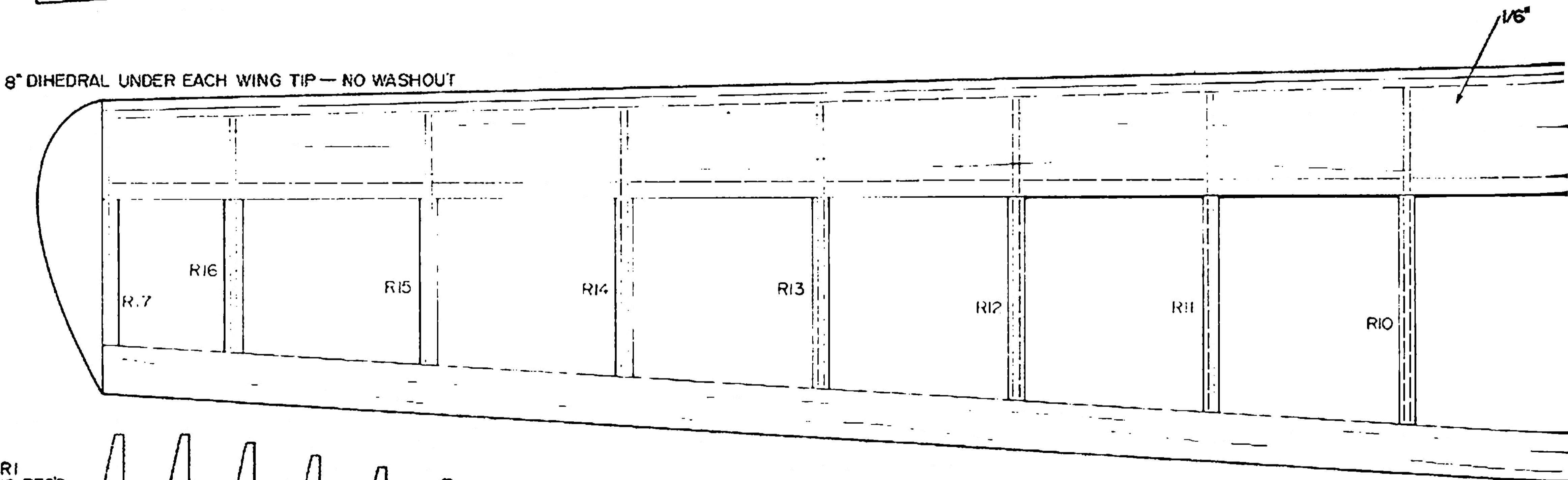
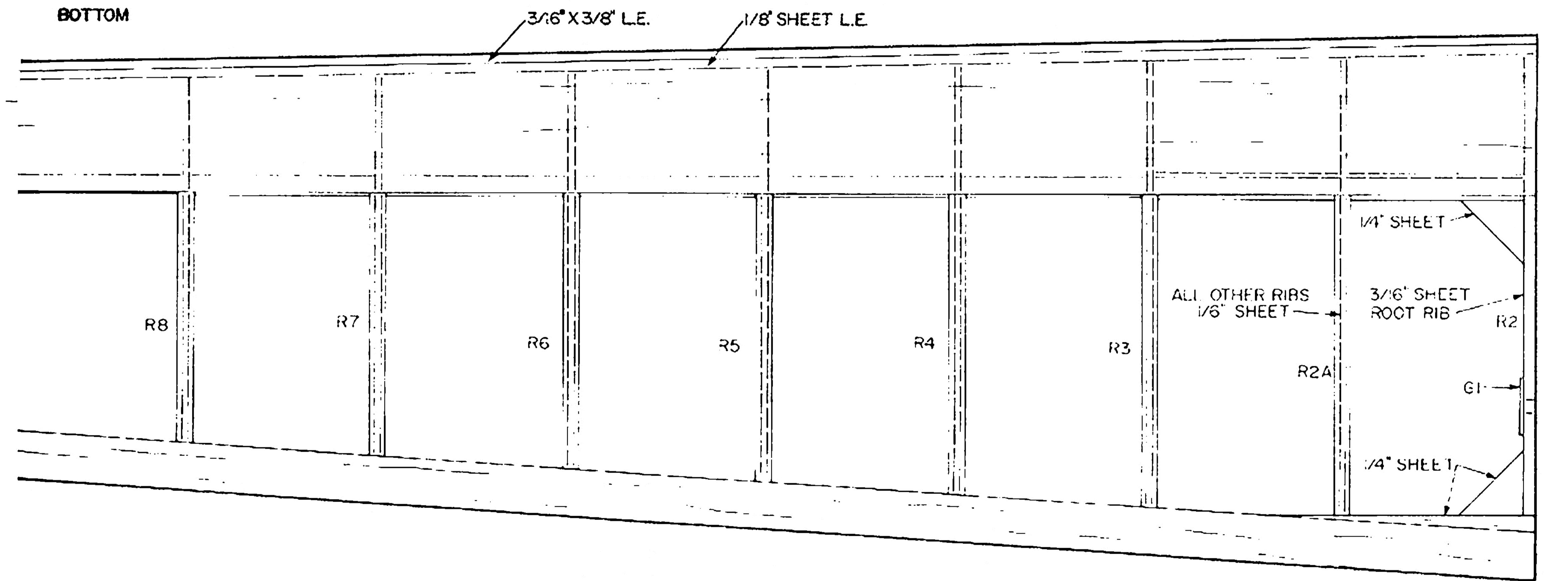




G1 - 1/16" PLY - 6 REQD

SECTION

BOTTOM



ALL RIBS 1/16" SHEET - 2 EACH REQD EXCEPT OTHERWISE NOTED

PLATE 2 OF 2
SLINGSBY SKYLARK 4
 DESIGNED & DRAWN BY JACK HEADLEY
 CHECKED BY DICK H. DD RANDY KIDD
 0 1 2 3 4 5 6