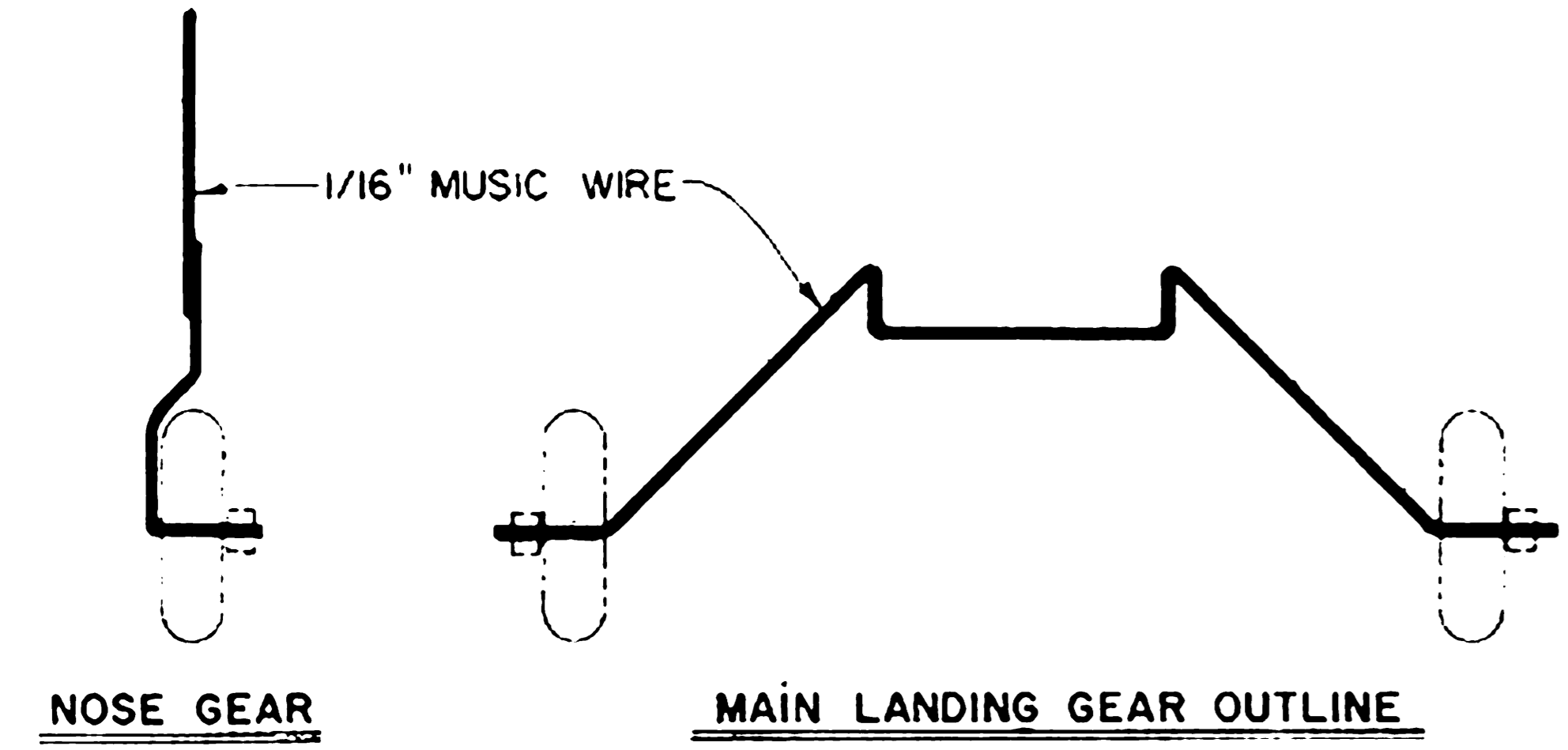
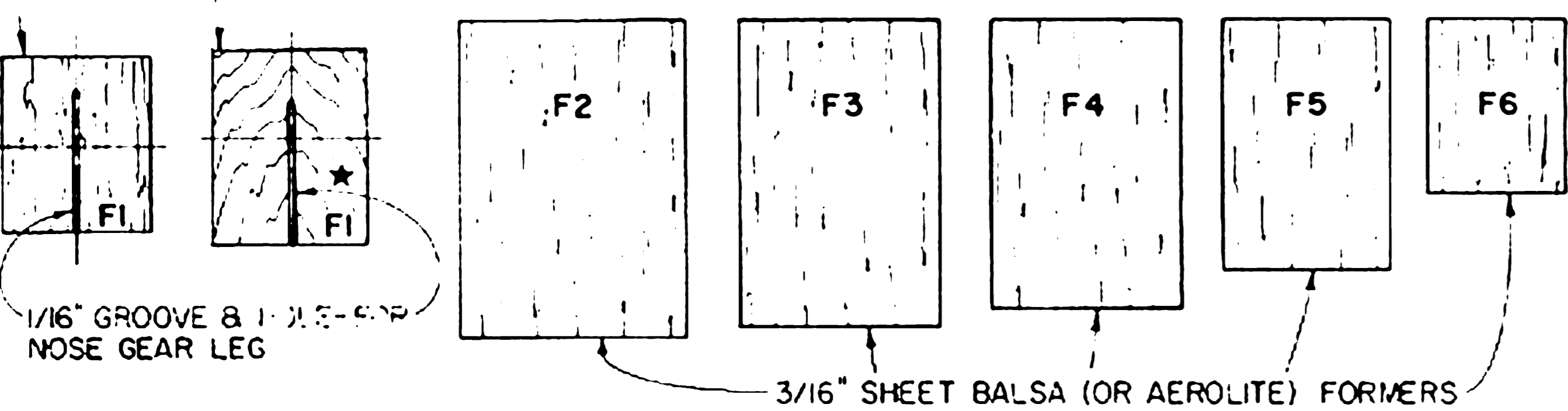


3/8" HARDWOOD  
1/8" PLYWOOD-USE FOR COX DRAGONFLY  
049 (NO. 4505) ENGINE INSTALLATION ONLY\*

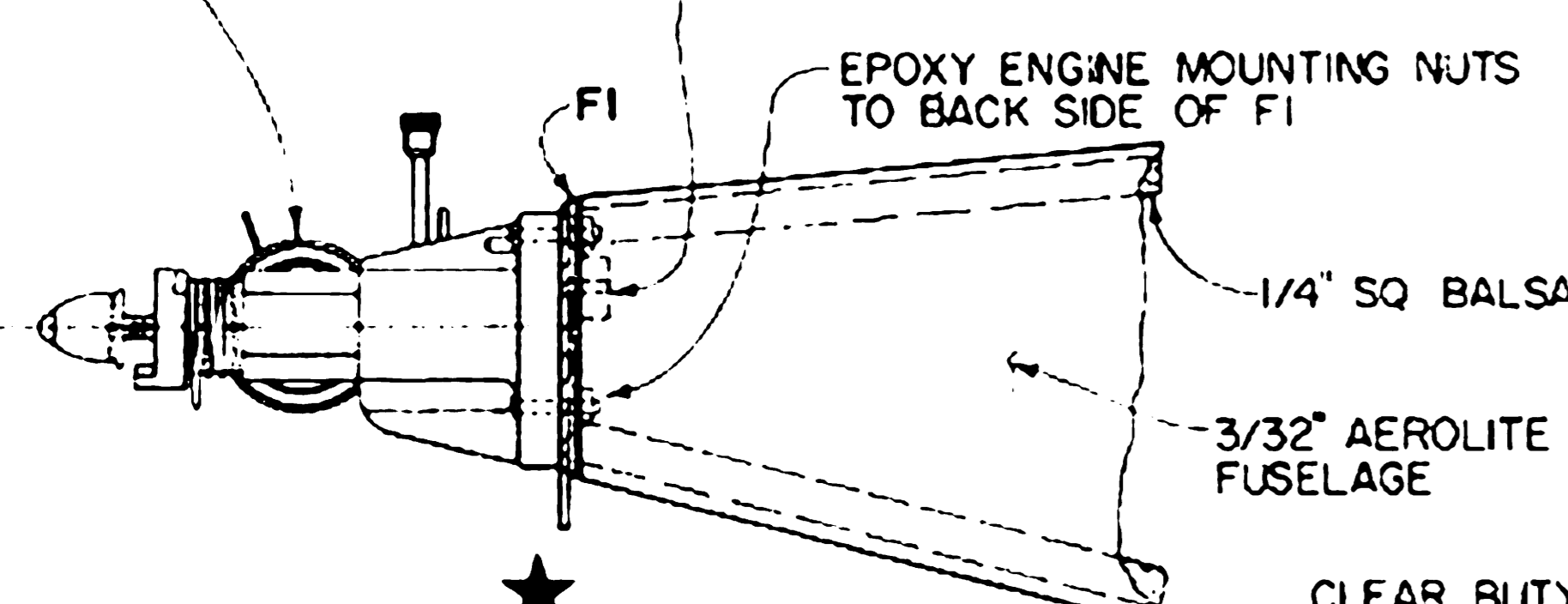


DASHED LINE INDICATES "LOFTING" PATTERN FOR A "WRAP-AROUND" FUSELAGE, USING 3/32" AEROLITE FOAMBOARD SHEET

\* SHORTEN FUSELAGE NOSE (1/2") FOR COX DRAGONFLY ENGINE INSTALLATION

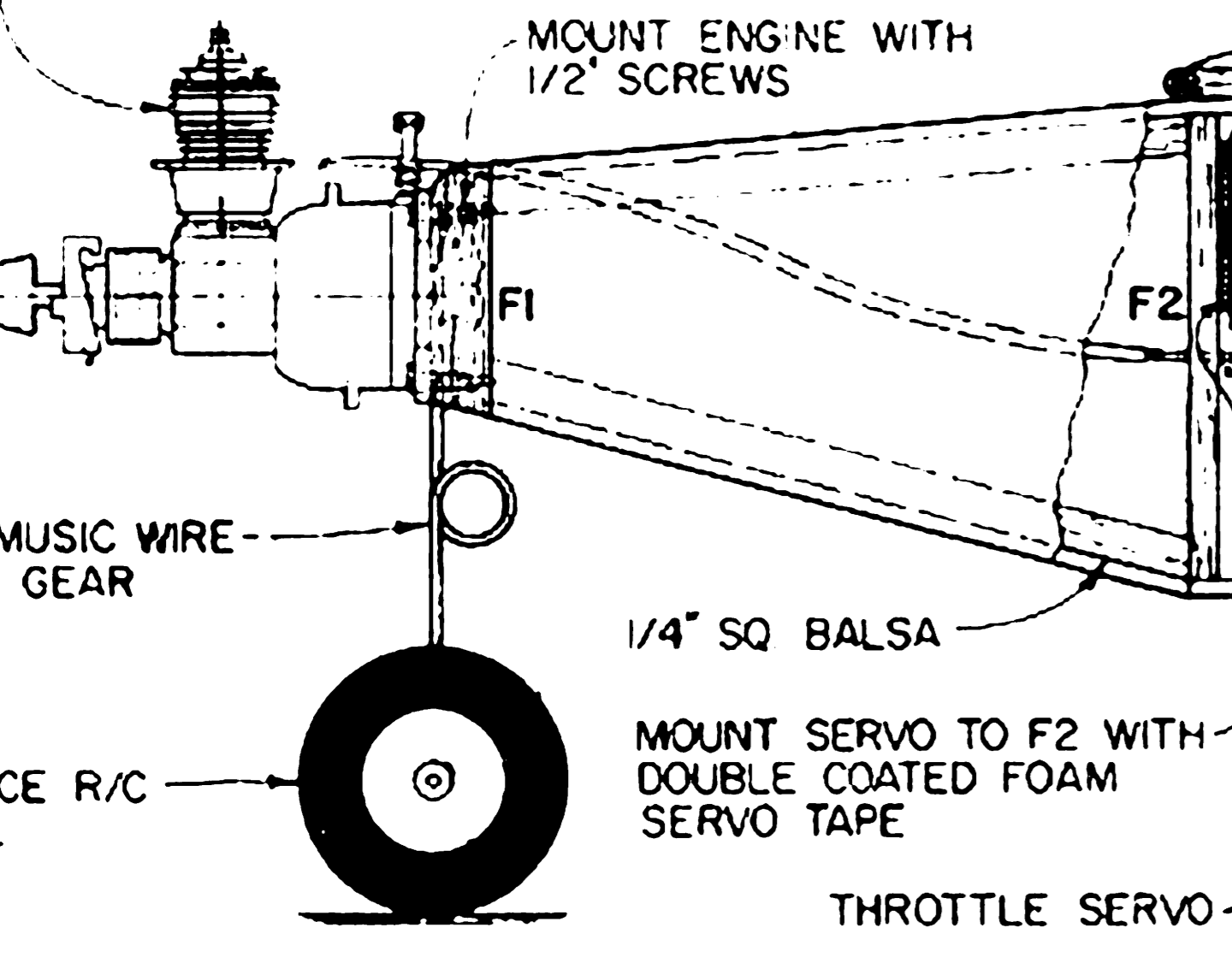
THROTTLE CONTROL CABLE

COX DRAGONFLY 049 (NO. 4505) ENGINE

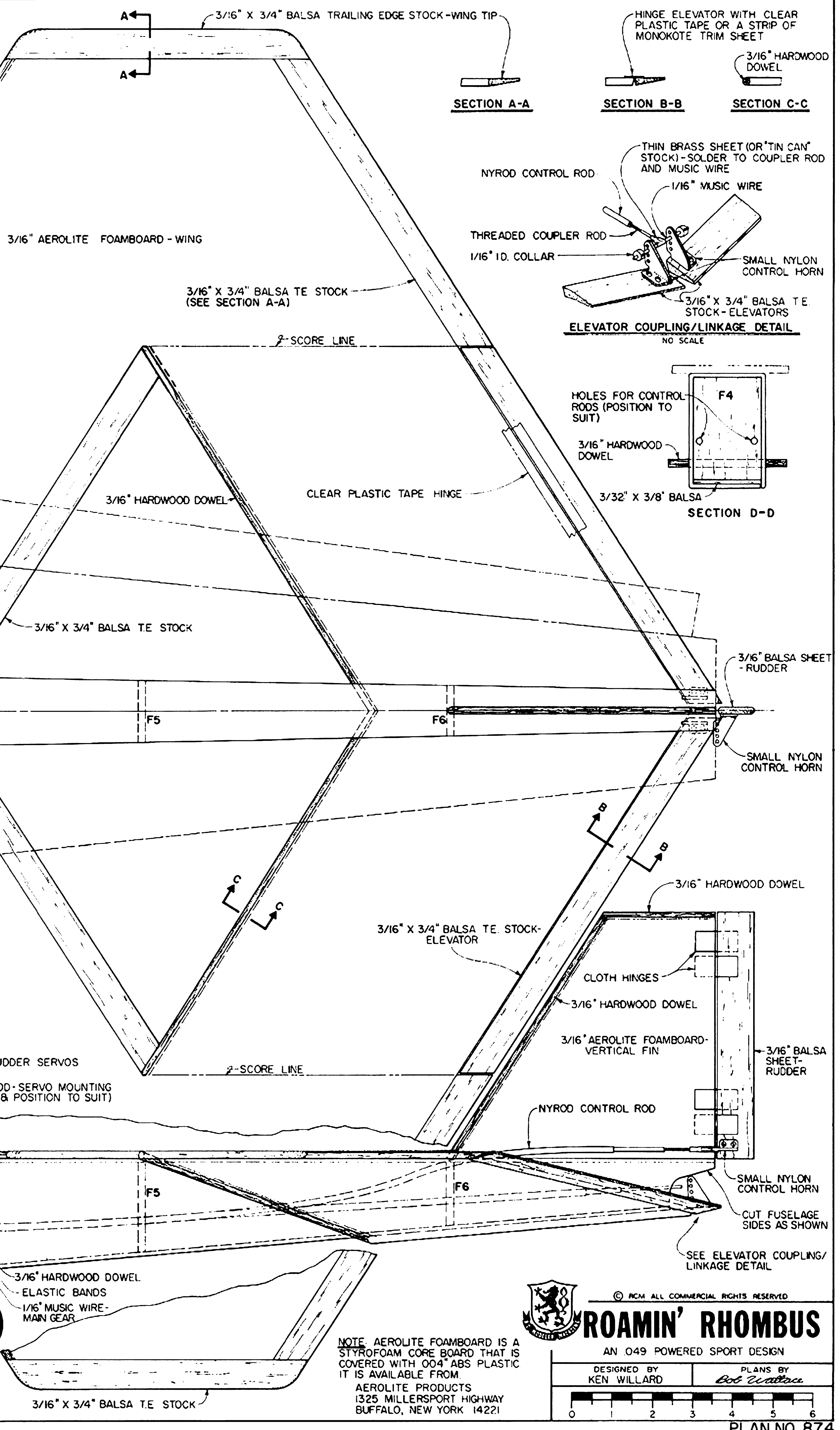


**NOSE SIDE VIEW-COX DRAGONFLY 049 (NO. 4505) ENGINE INSTALLATION**

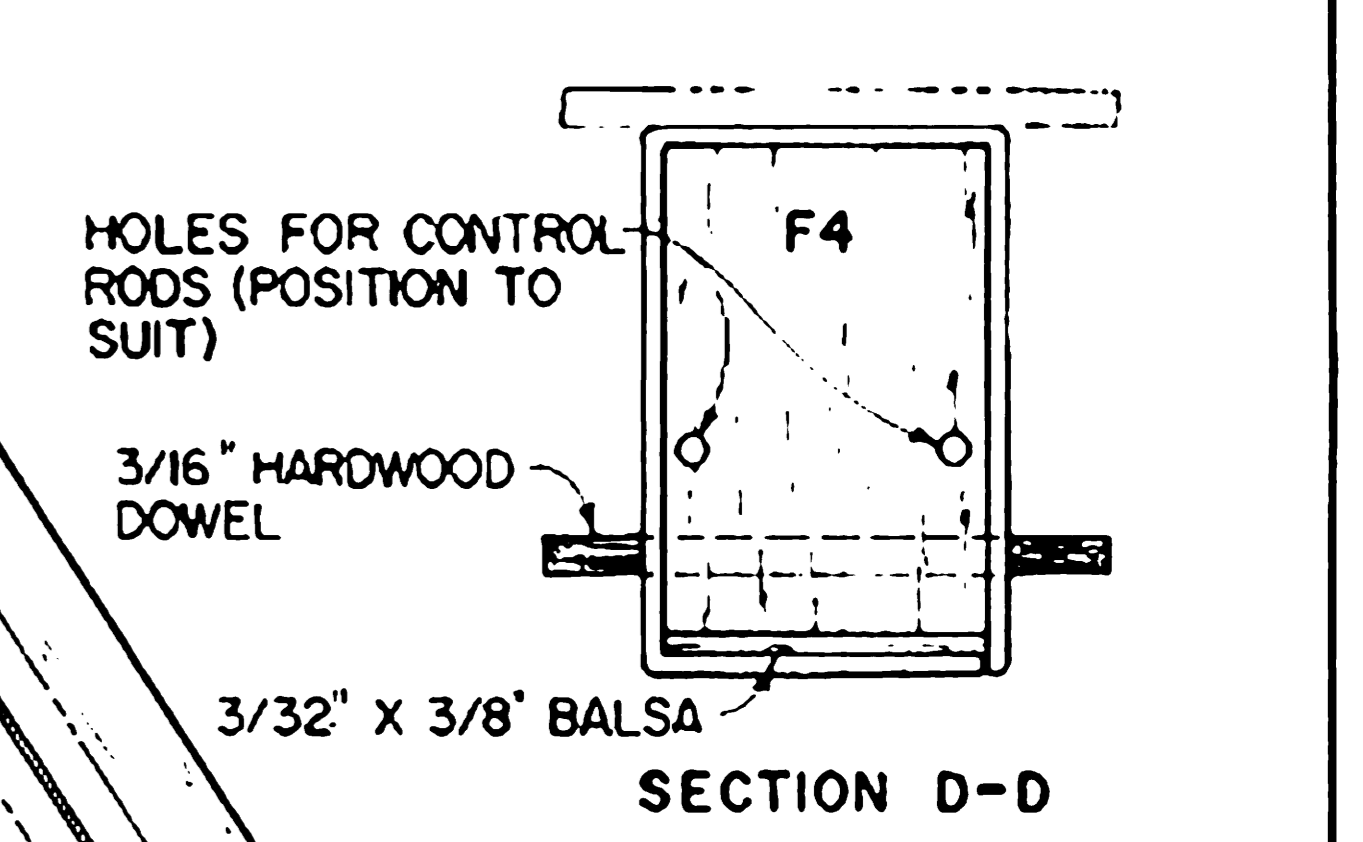
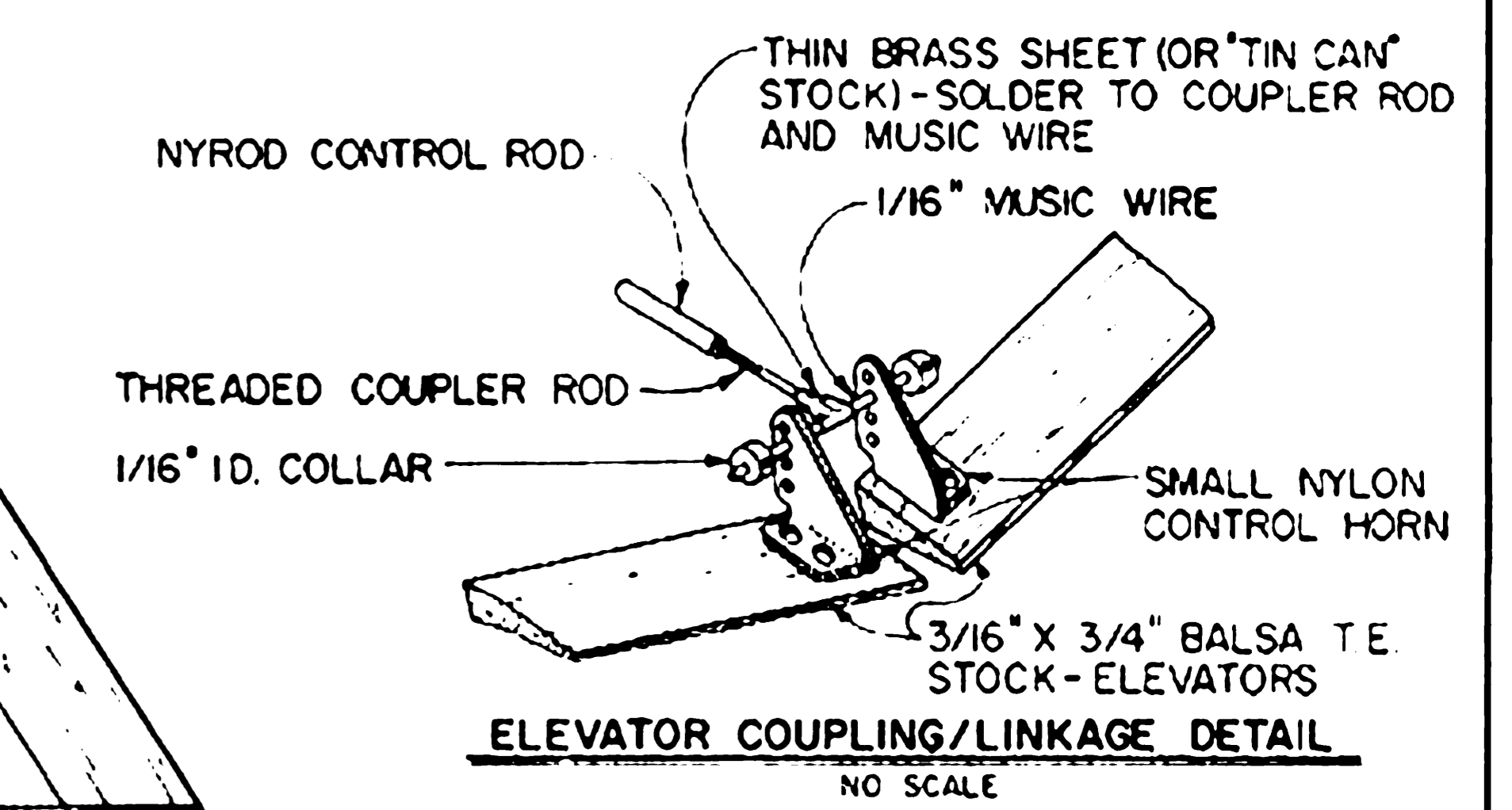
COX BLACK WIDOW 049 ENGINE EQUIPPED WITH ACE R/C THROTTLE SLEEVE



RECOMMENDED PROPELLER SIZE: 6" DIA - 3" PITCH



SECTION A-A SECTION B-B SECTION C-C



NOTE: AEROLITE FOAMBOARD IS A STYROFOAM CORE BOARD THAT IS COVERED WITH 004" ABS PLASTIC. IT IS AVAILABLE FROM:  
AEROLITE PRODUCTS  
1325 MILLERSPORT HIGHWAY  
BUFFALO, NEW YORK 14221

© RCM ALL COMMERCIAL RIGHTS RESERVED

**ROAMIN' RHOMBUS**  
AN 049 POWERED SPORT DESIGN

DESIGNED BY KEN WILLARD  
PLANS BY Bob Wallace

0 1 2 3 4 5 6

PLAN NO. 874