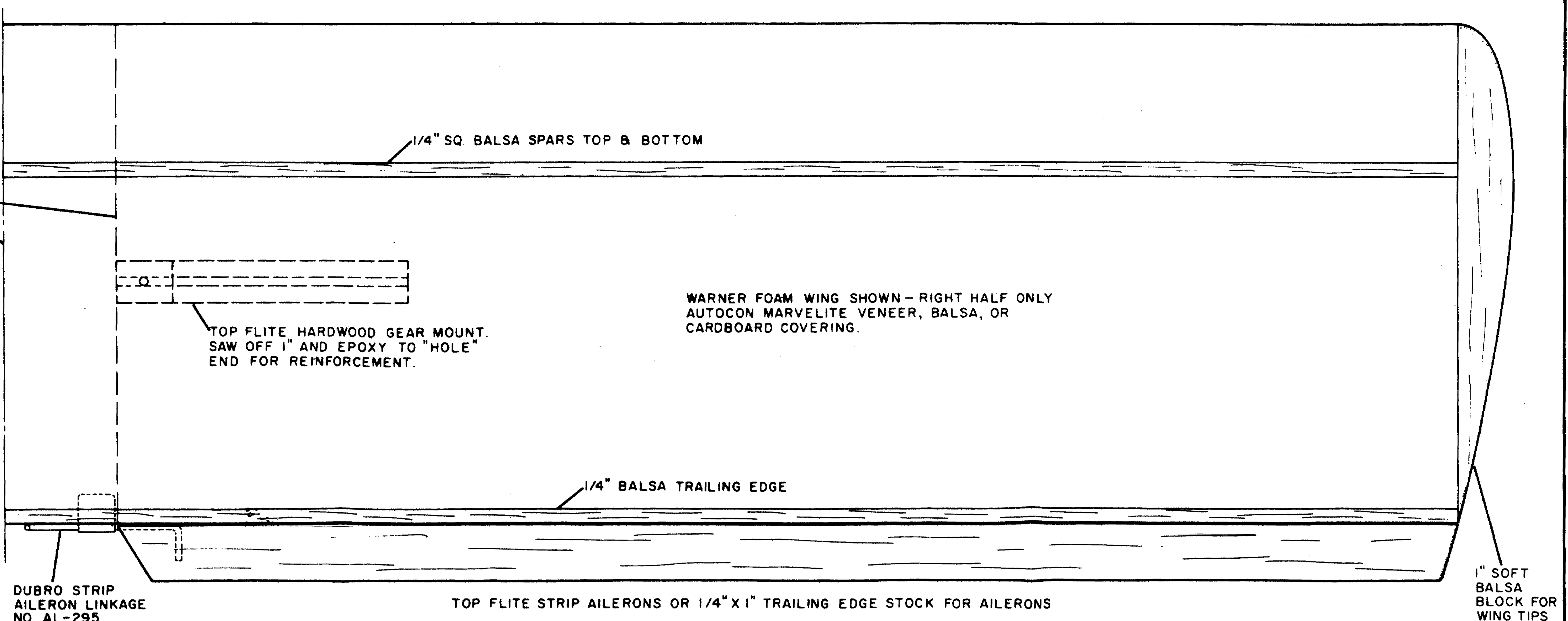


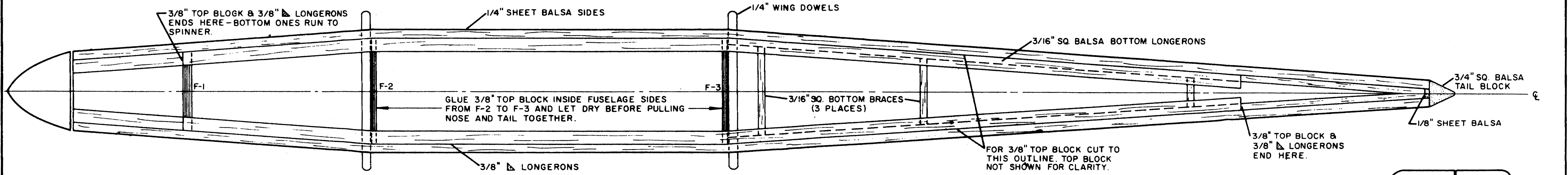
STAB CAN BE MADE FROM 1/4" SHEET BALSA OR BUILT UP

WRAP 4" WIDE GLASS CLOTH IMPREGNATED & COATED WITH EPOXY AROUND ENTIRE CENTER SECTION.



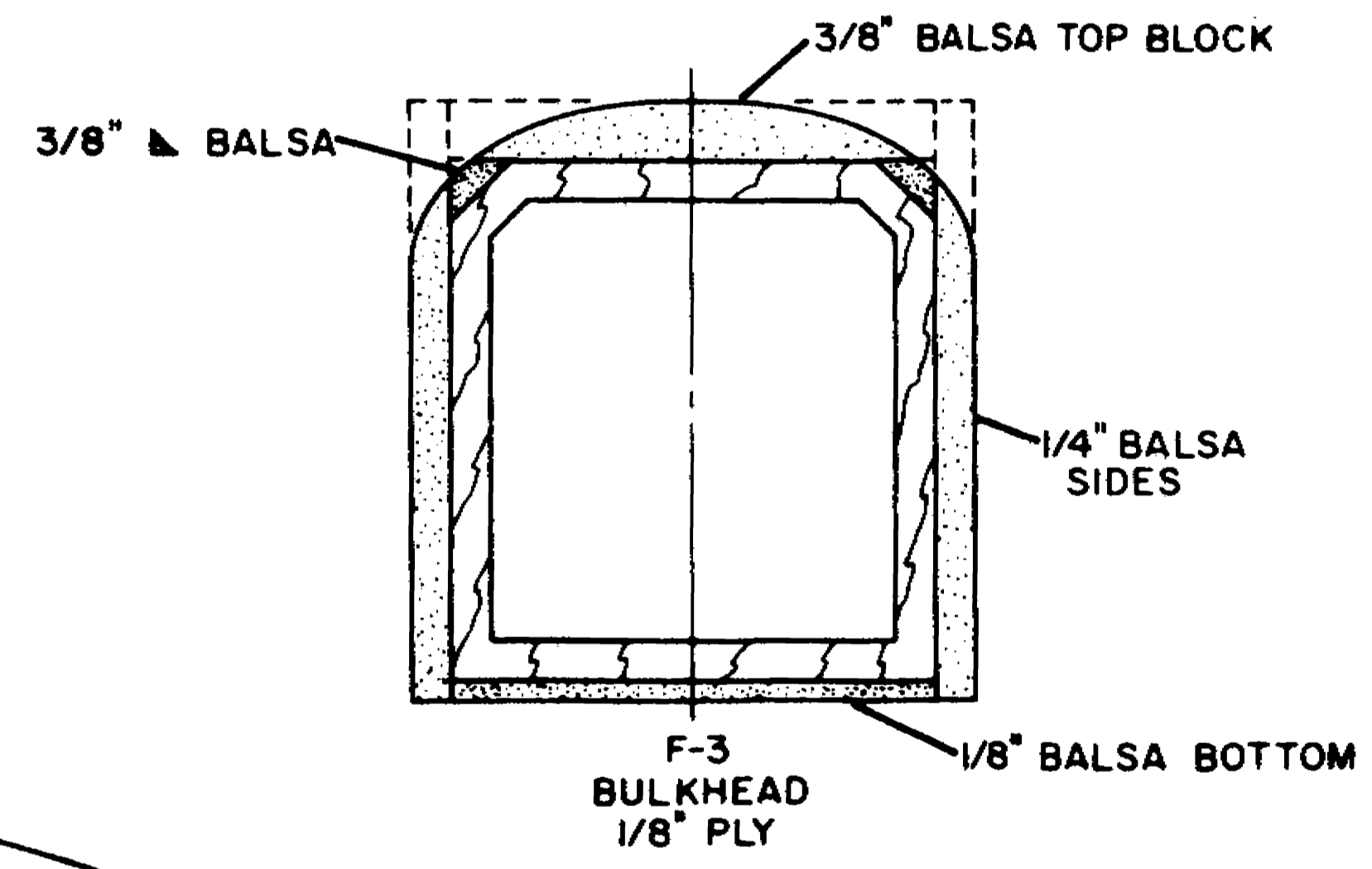
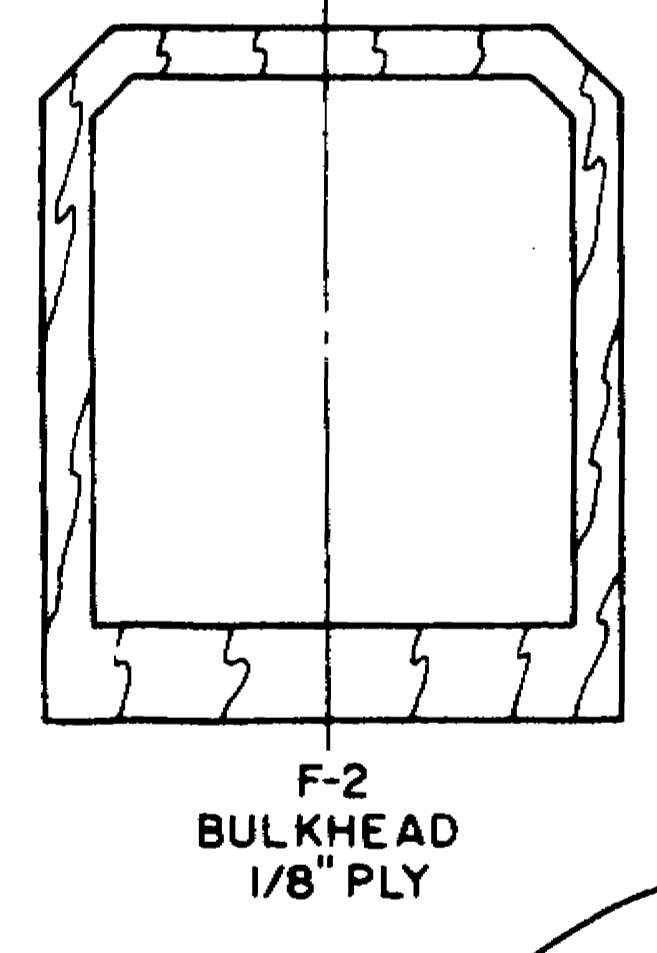
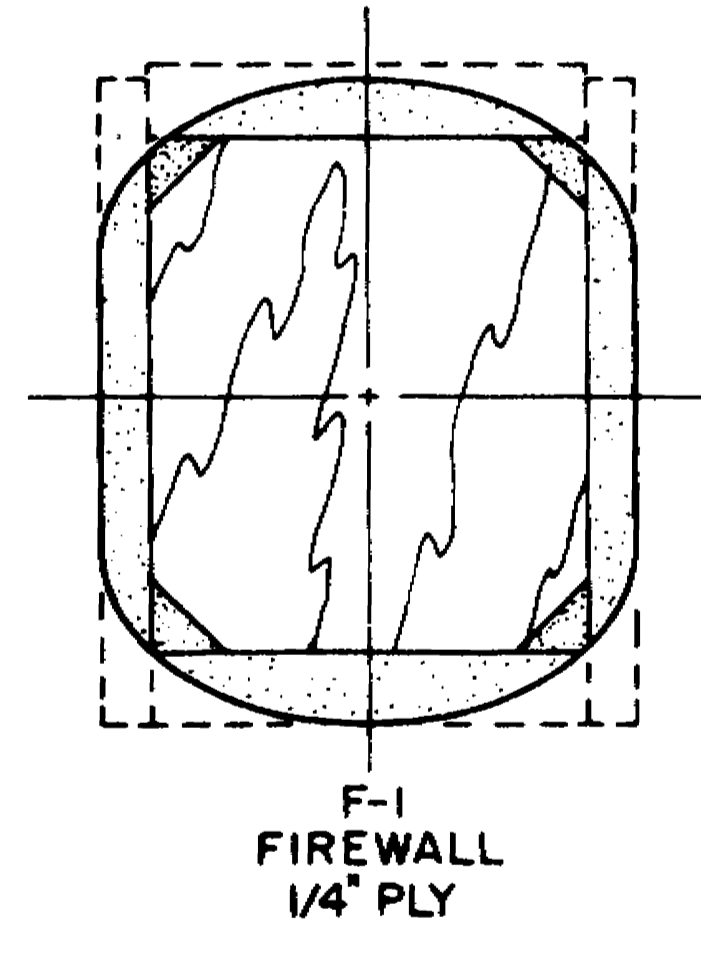
WARNER FOAM WING SHOWN - RIGHT HALF ONLY AUTOCON MARVELITE VENEER, BALSAL, OR CARDBOARD COVERING.

1" SOFT BALSAL BLOCK FOR WING TIPS

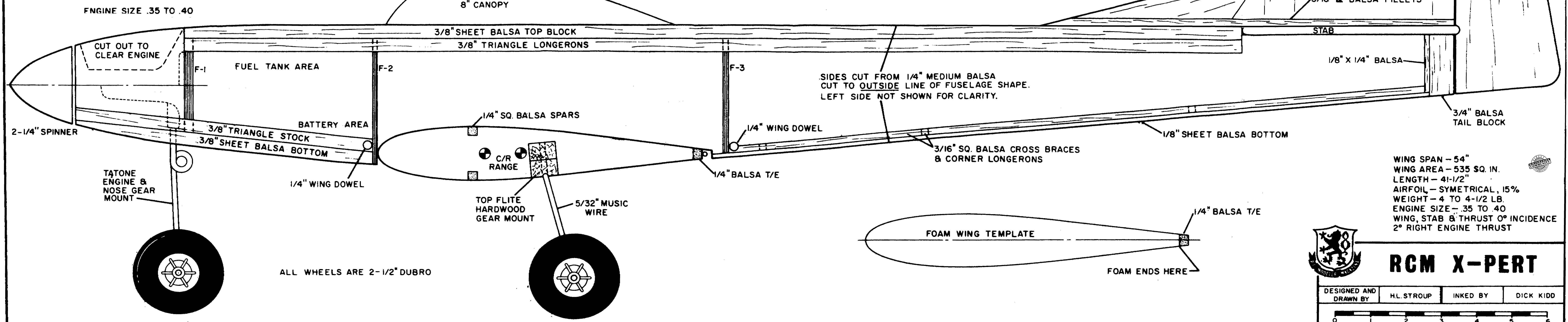


GLUE 3/8" TOP BLOCK INSIDE FUSELAGE SIDES FROM F-2 TO F-3 AND LET DRY BEFORE PULLING NOSE AND TAIL TOGETHER.

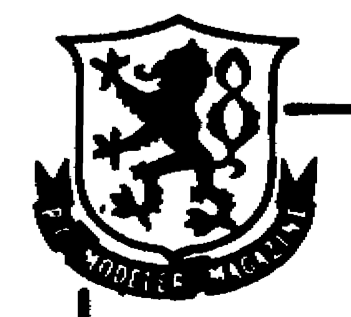
FOR 3/8" TOP BLOCK CUT TO THIS OUTLINE. TOP BLOCK NOT SHOWN FOR CLARITY.



MAIN LANDING GEAR PATTERN 5/32" MUSIC WIRE



WING SPAN - 54"  
 WING AREA - 535 SQ. IN.  
 LENGTH - 41-1/2"  
 AIRFOIL - SYMMETRICAL, 15%  
 WEIGHT - 4 TO 4-1/2 LB.  
 ENGINE SIZE - .35 TO .40  
 WING, STAB & THRUST 0° INCIDENCE  
 2° RIGHT ENGINE THRUST



# RCM X-PERT

DESIGNED AND DRAWN BY HL. STROUP INKED BY DICK KIDD

