

1/4" 5 PLY ENGINE MOUNTING PLATE (SHOWN CUT-OUT FOR O.S. 4-CYCLE ENGINE) ATTACH PLATE TO THE 1/2" THICK PINE RAILS WITH 4-40 PAN HEAD SCREWS WHICH THREAD INTO 4-40 TEE-NUTS

1/2" SHEET COWL FRONT

SET ENGINE AT 0° SIDE THRUST 2" DOWN THRUST

ATTACH SERVO RAILS TO CABANE GUIDES

THE FUSELAGE IS CONSTANT WIDTH OVER THIS LENGTH (AT TOP LONGERON) (AT BOTTOM LONGERON)

1/2" PINE RAILS (2 REQUIRED)

SCALLOP FORMERS AS SHOWN AFTER INSTALLING STRINGERS

1/8" SHEET

1/8" SHEET

1/8" SHEET (2 REQUIRED, ONLY THE AFT ONE IS SCALLOPED)

#4 1/2" LG SHEET METAL SCREW (COWL ATTACHMENT)

NOTE-TANK ENCLOSURE IS SIZED FOR KRAFT 8 OUNCE SLIMLINE. ALTER AS NEEDED FOR OTHER FUEL TANKS

1/4" SHEET COWL SIDES

COWL SIDES MAY BE PIECED TOGETHER

SAND THIS ANGLE (2") AFTER GLUING SIDES & BOTTOM TOGETHER

NOTE-WING CENTER SECTION DETAILS ARE SHOWN ON SHEET 2

GLUE COWL BOTTOM HALVES TOGETHER

1/4" SHEET COWL BOTTOM (2 REQUIRED)

REFERENCE NOTE: THE CLARK "Y" AIRFOIL WAS USED IN THE AIRPLANE'S INITIAL TESTS

NOTE-TOP HALF IS UNDERCUT 1/32" FOR COWL WRAP-AROUND

1/8" LITE-PLY COWL FRONT FORMER

COWL HALF-PATTERN-GLUE BOTH HALFS TOGETHER ON CENTER-LINE USING HOT-STUFF AND BAKING SODA

1/8" DIA MUSIC WIRE LANDING GEAR STRUTS

BIND WITH COPPER WIRE CHECK & ADJUST FOR TRACKING AND SILVER SOLDER

3/16" DIA MUSIC WIRE AXLE

7/32" O.D BRASS TUBE (2 REQUIRED) MOUNT WHEELS PER WILLIAMS BROS INSTRUCTIONS

1/32" DIA MUSIC WIRE HINGE PIN (USE THIS SAME HINGE CONCEPT ON ALL CONTROL SURFACES)

ALL GUSSETS 1/16" SHEET

KLETT LARGE HINGE (3 REQUIRED)

TYPICAL FRAMEWORK 1/4" x 3/8"

1/4" SQ

1/16" x 1/8"

1/4" SQ

TYPICAL RIB-1/8" x 1/4" 1/16" x 1/8" CAPSTRIPS (SCALE), OR 1/16" x 1/4" CAPSTRIPS (OPTIONAL)

1/4" x 3/8"

1/16" PLY HORN MOUNT (BOTH SIDES)

1/16" SHEET

1/4" SQ SPRUCE

3/32" DIA MUSIC WIRE

GOLDBERG TAIL WHEEL BRACKET IS MOUNTED WITH 2-56 SCREWS (THE HOLES FOR WHICH ARE "HOT-STUFFED" AFTER TAPPING)

1/4" x 1/4" END FORMER

1/4" x 3/8"

1/4" x 1/4" SPRUCE

1/4" x 1/4" SPRUCE

1/4" x 1/4" SPRUCE

1/4" x 1/4" SPRUCE

1/4" x 1/4" SPRUCE

1/4" x 1/4" SPRUCE

1/4" x 1/4" SPRUCE

1/4" x 1/4" SPRUCE

NOTE-UNLESS OTHERWISE NOTED-ALL WOOD IS BALSA

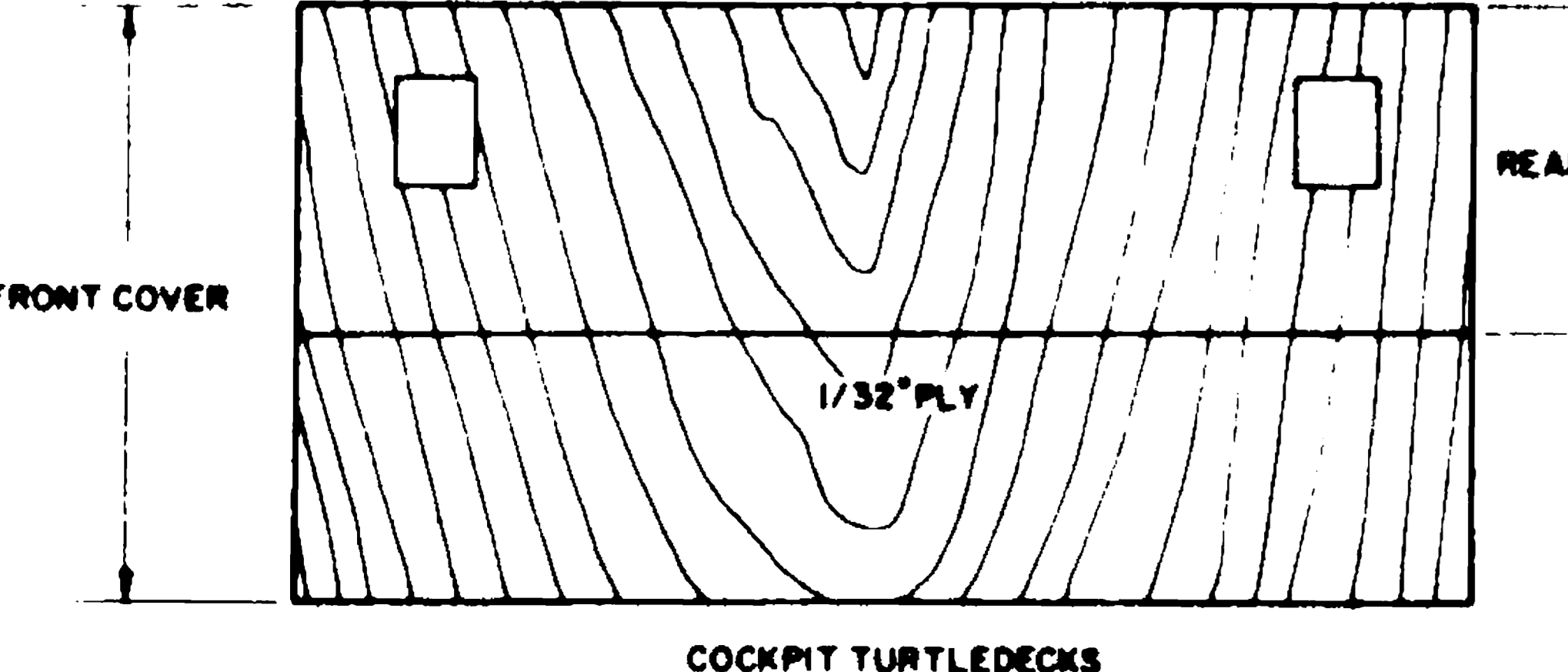
THIS IS A QUARTER-SCALE MODEL OF THE CLASSIC "GOLDEN AGE OF AVIATION" AIRPLANE. DATA FOR THIS MODEL IS FROM "1932 FLYING & GLIDER MANUAL"



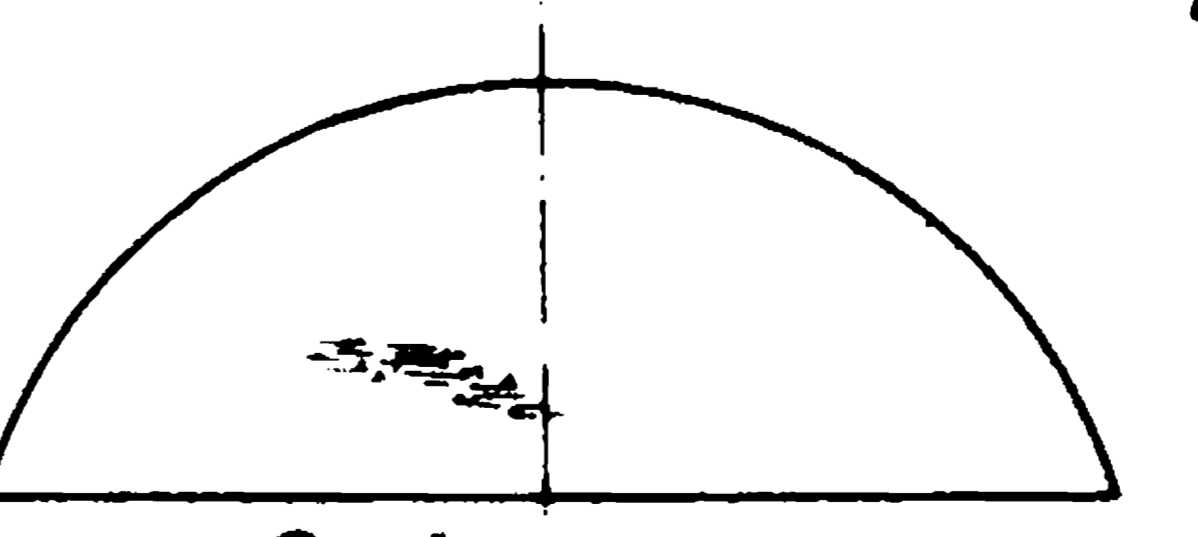
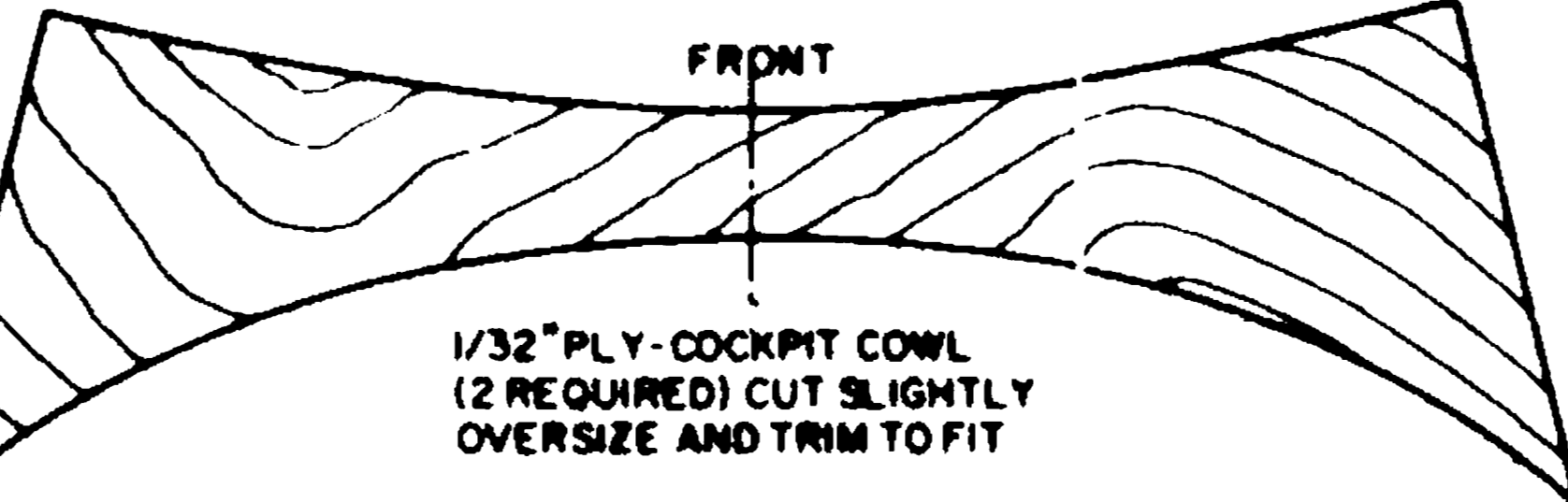
DESIGNED BY GENE WALLOCK DRAWN BY Gene Wallock

SHEET 1 of 2

PLAN NO. 869 20

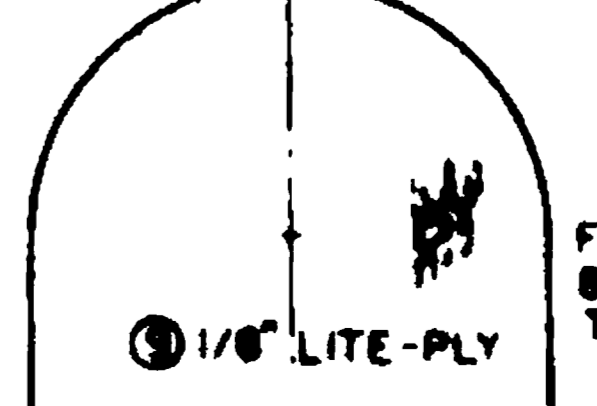
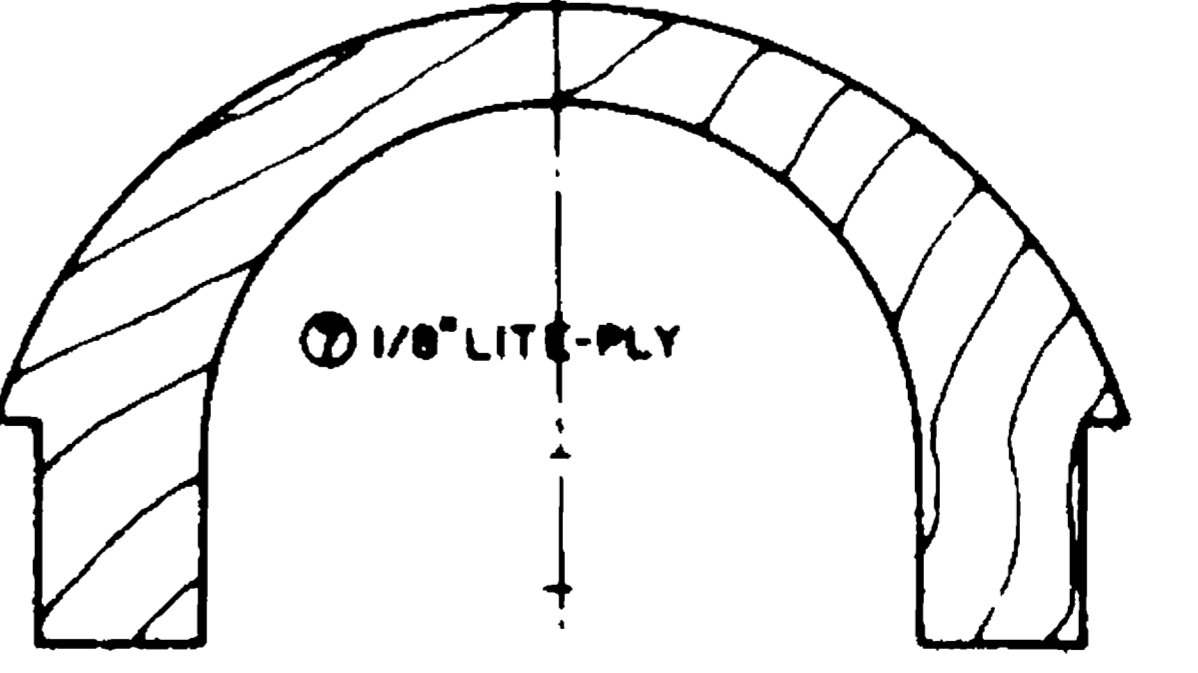


WILLIAMS BROS 6-5/8" DIA VINTAGE WHEELS



1/8" LITE-PLY (2 THICKNESS REQ'D)

1/8" LITE-PLY



FOR KRAFT 8 OZ SLIMLINE TANK

AFT TANK ENCLOSURE BLK HD

FRONT COVER

REAR COVER

COCKPIT TURTLEDECKS

FRONT

1/8" LITE-PLY (2 THICKNESS REQ'D)

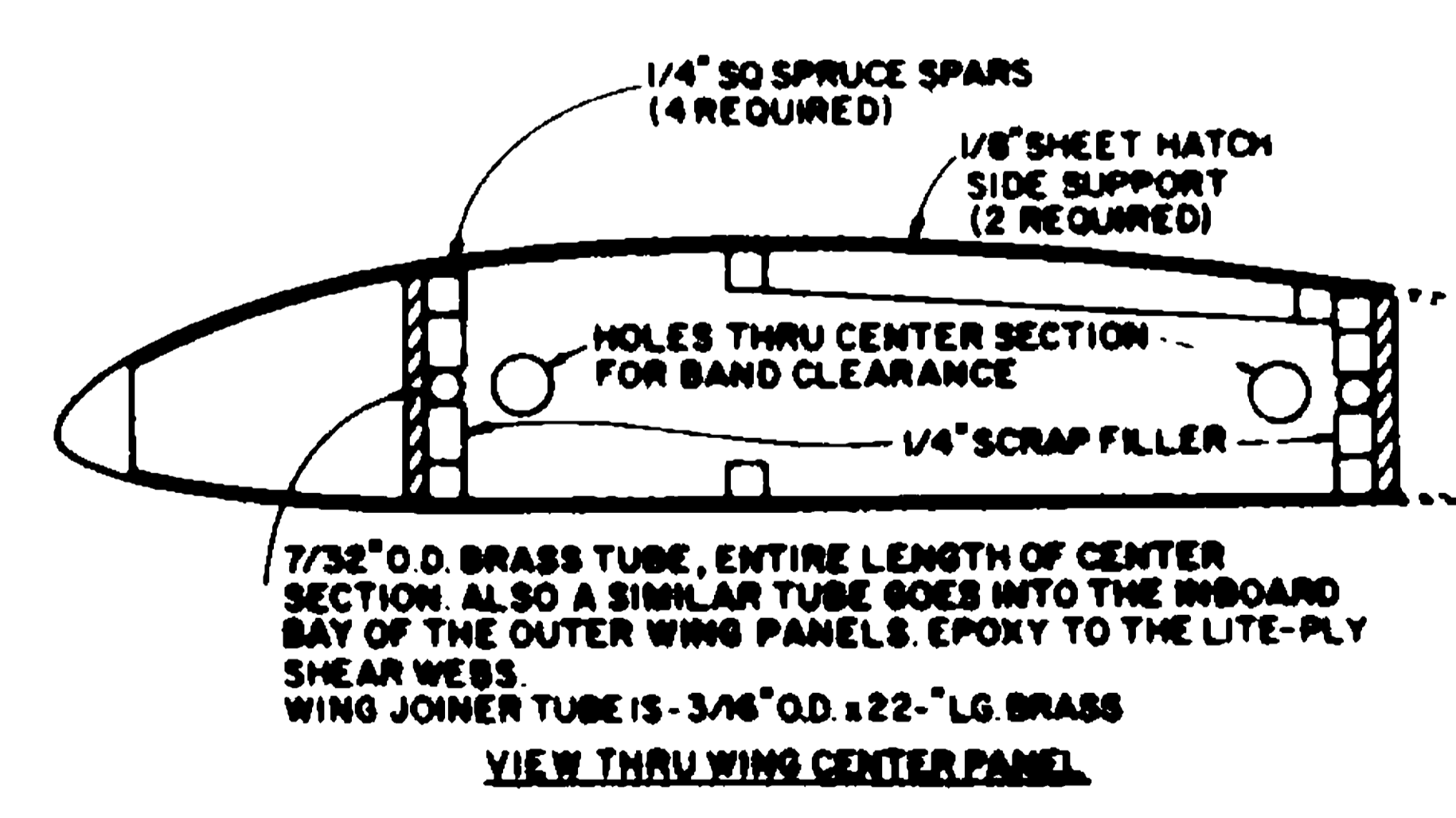
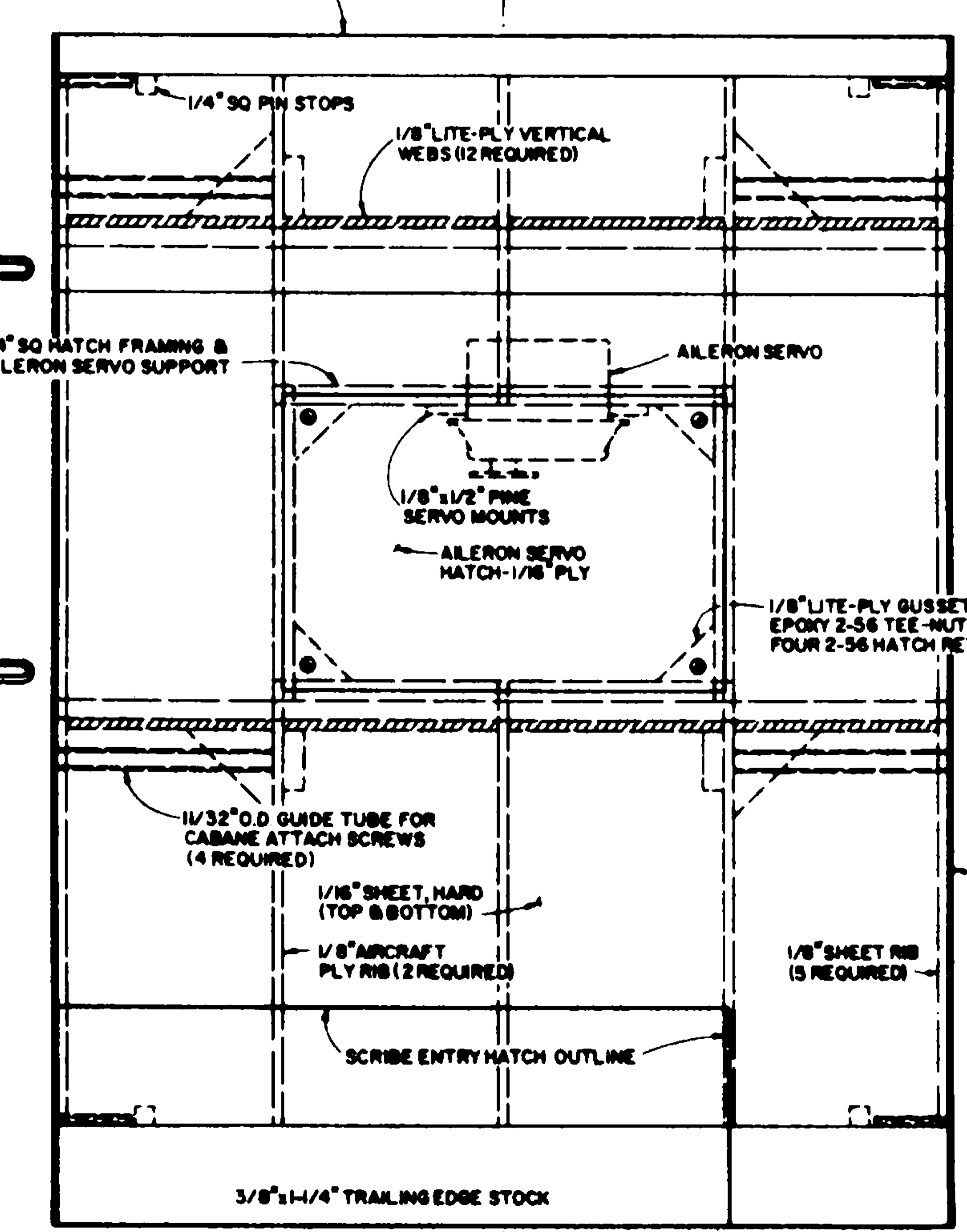
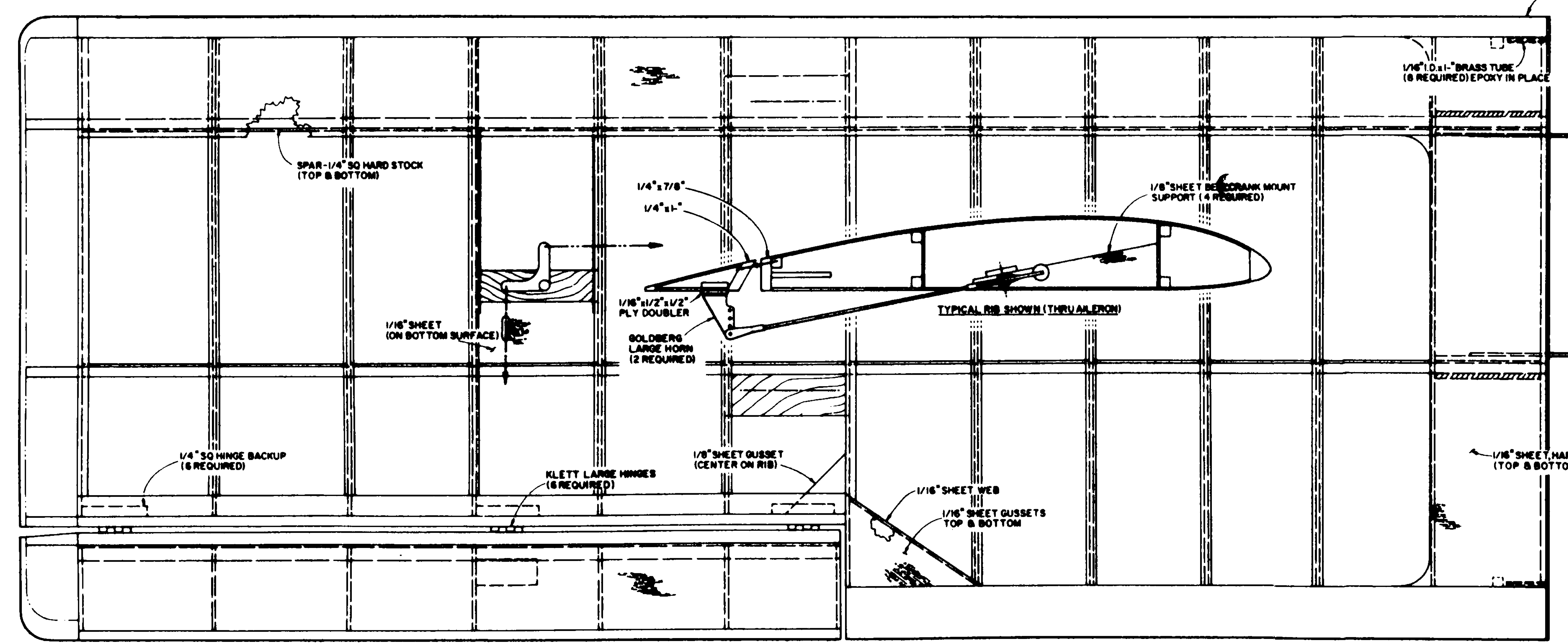
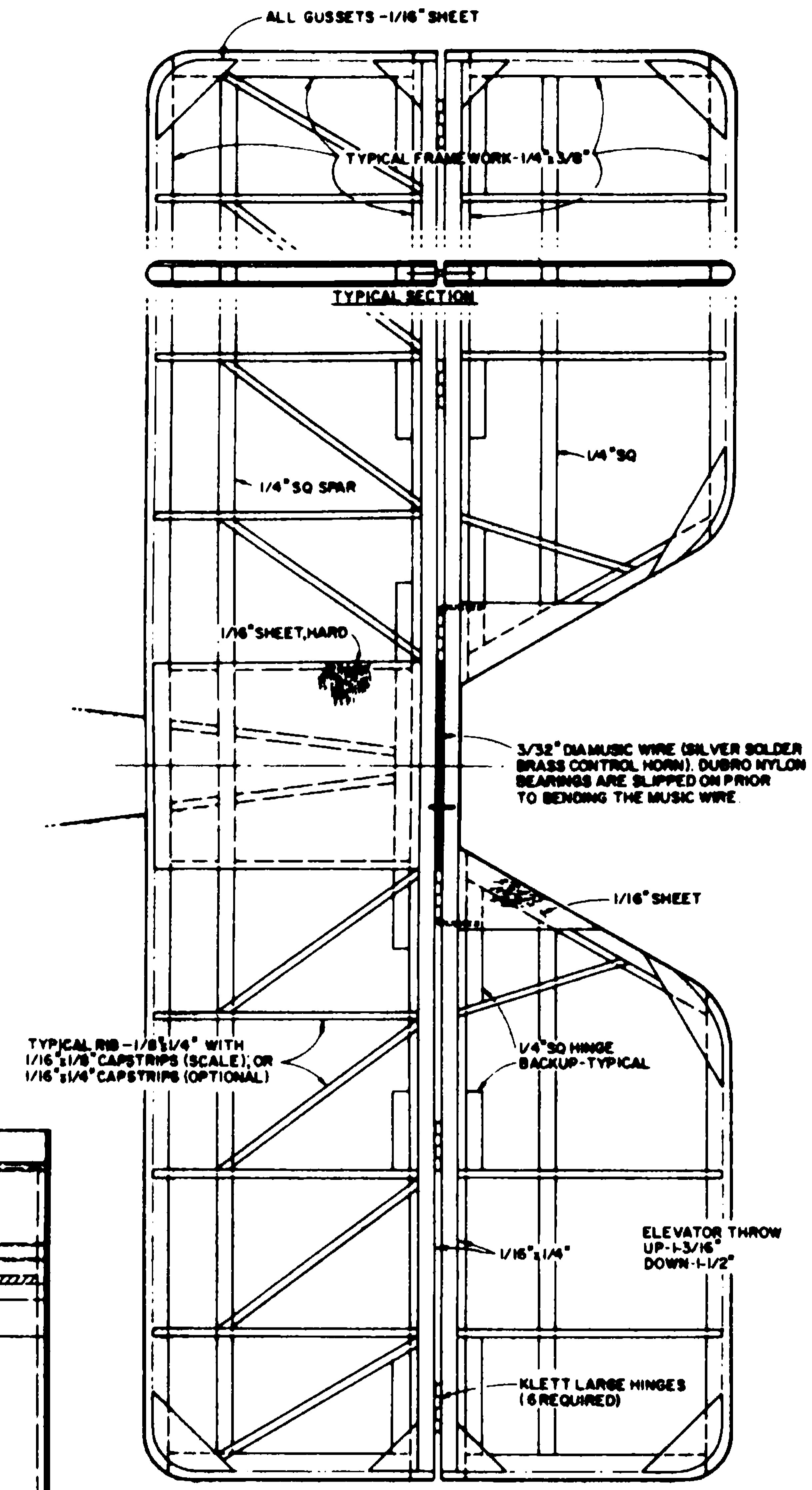
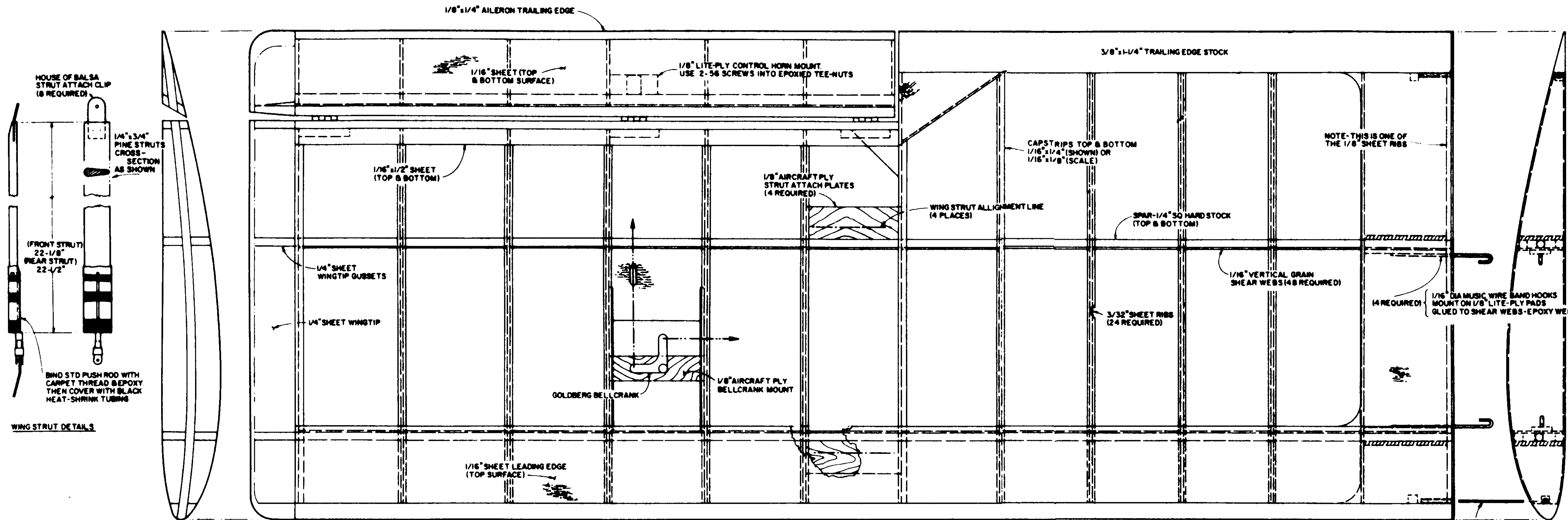
1/8" LITE-PLY

FOR KRAFT 8 OZ SLIMLINE TANK

AFT TANK ENCLOSURE BLK HD

SHEET 1 of 2

PLAN NO. 869 20



AILERON THROWS UP - 5/8" DOWN - 3/16"

PIETENPOL

DESIGNED BY GENE WALLACK DRAWN BY GENE WALLACK

PLAN NO. 869