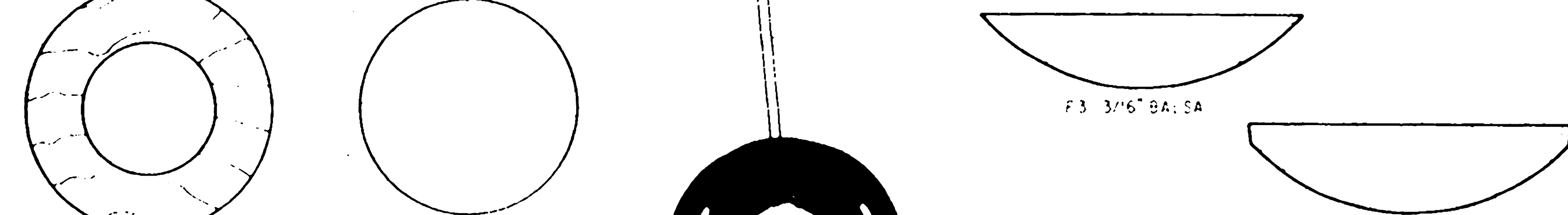
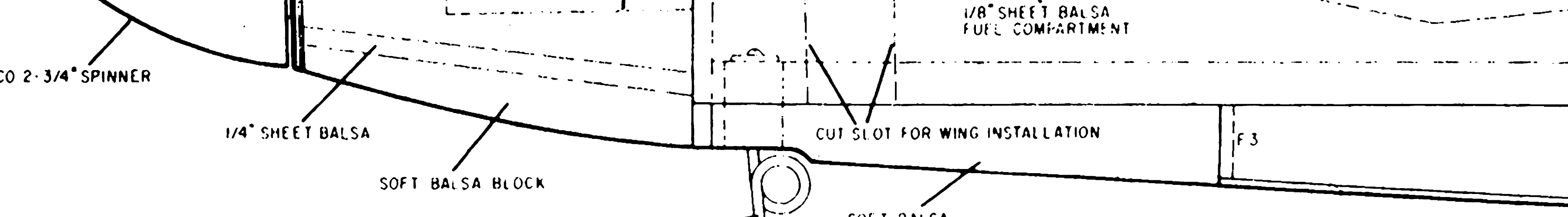
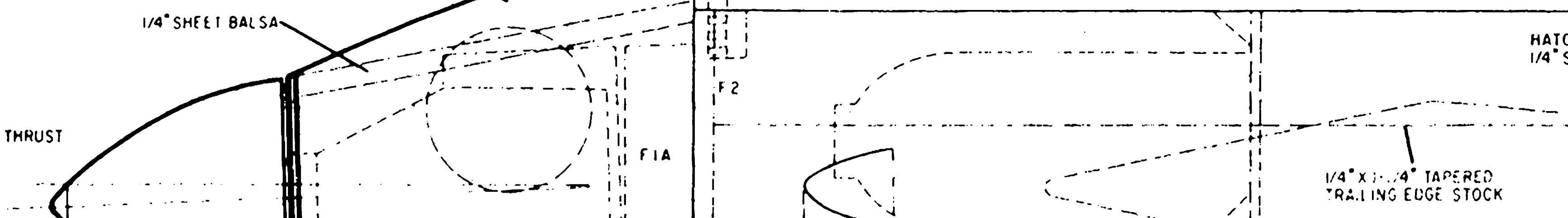
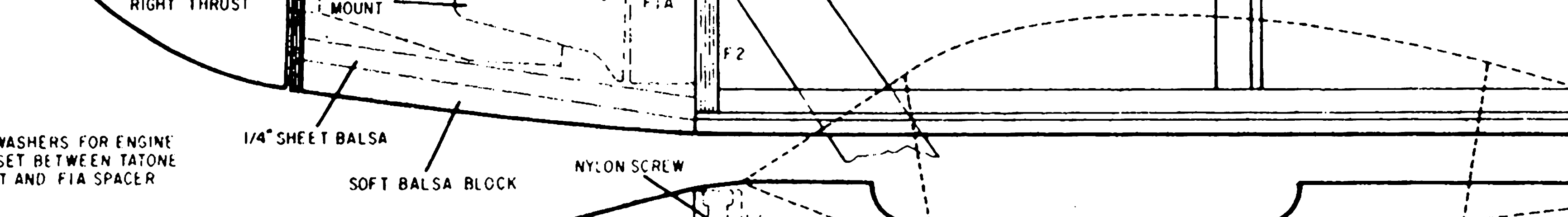
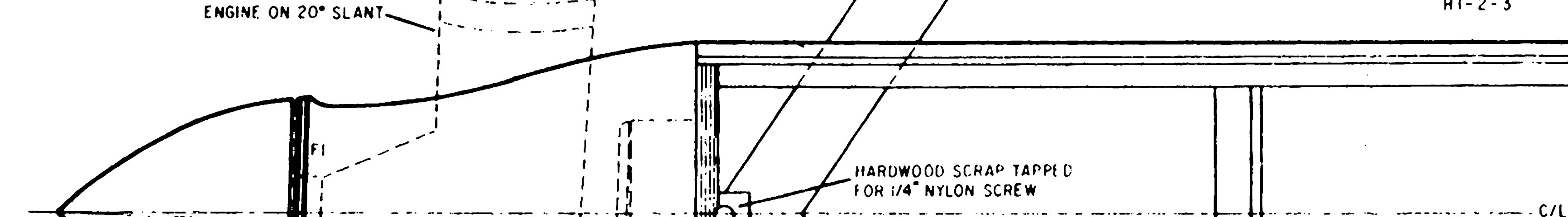
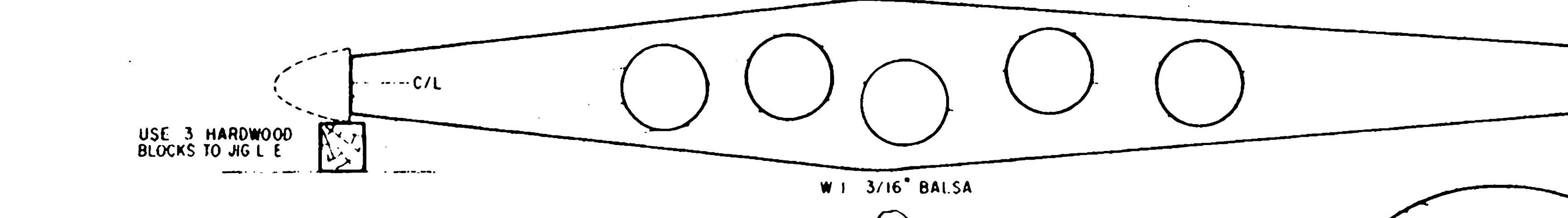
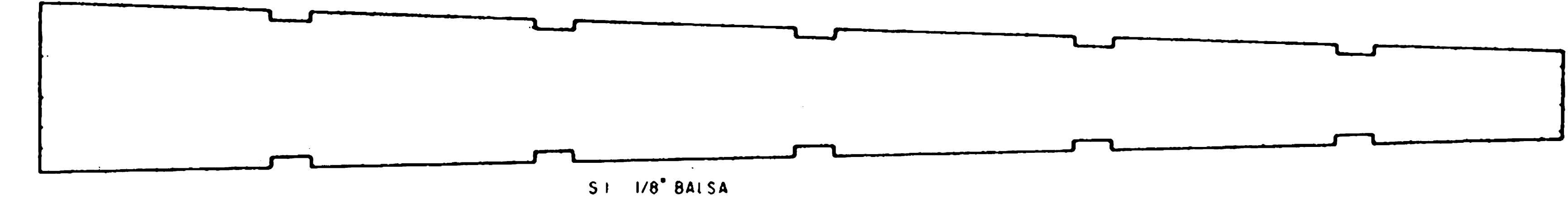
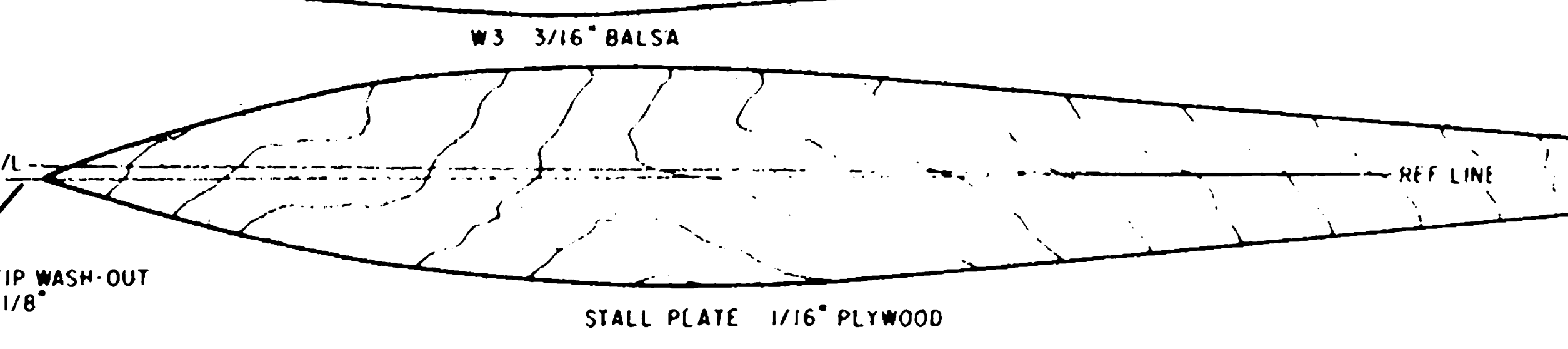
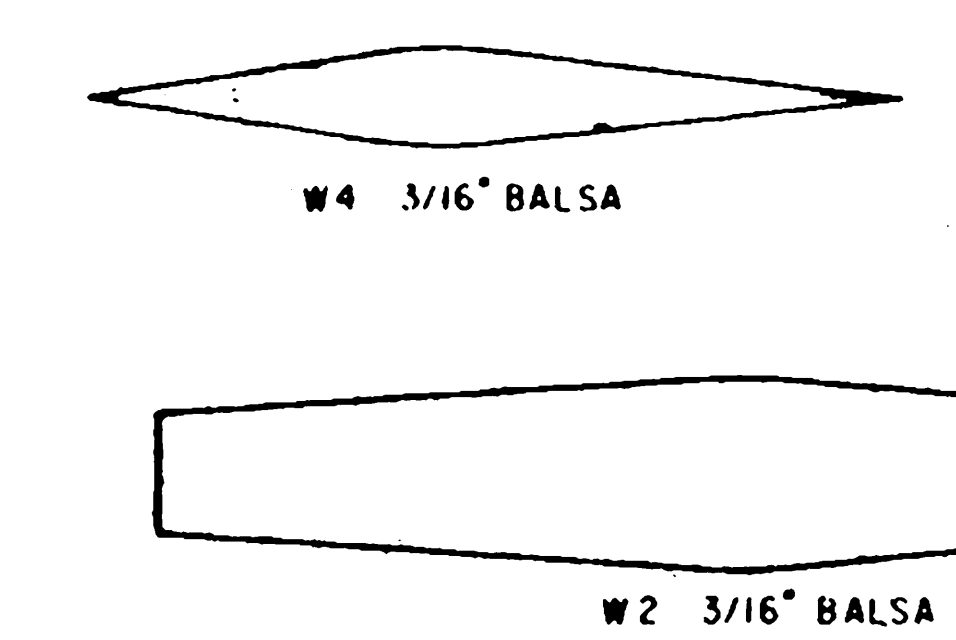


BUILD WING TIPS SEPARATELY THEN EPOXY TO MAIN WING. NOTE DIHEDRAL AND WASH OUT.



NOTE: UNIQUE HOLLOW WING CONSTRUCTION. EPOXY W1 & W2 TO TRAILING SPARS. EPOXY GLEUE 1/4\"/>

NOTE: CONSTRUCT WING NEXT ASSEMBLY FUSEL FORMERS F2-F11. Balsa SIDES WITH 1/16\"/>

NOTE: RUDDER-TAIL SKID MAKE FLAT ROUNDING OFF LEADING & TRAILING EDGE ONLY.

NOTE: AFTER FUSELAGE IS COMPLETE BRUSH ON 2 COATS SIG EPOXY. SAND THOROUGHLY BETWEEN COATS.

NOTE: RUDDER THROW 20\"/>

NOTE: ELEVATOR-TAIL SKID MAKE FLAT ROUNDING OFF LEADING & TRAILING EDGE ONLY.

NOTE: ELEVATOR-TAIL SKID MAKE FLAT ROUNDING OFF LEADING & TRAILING EDGE ONLY.

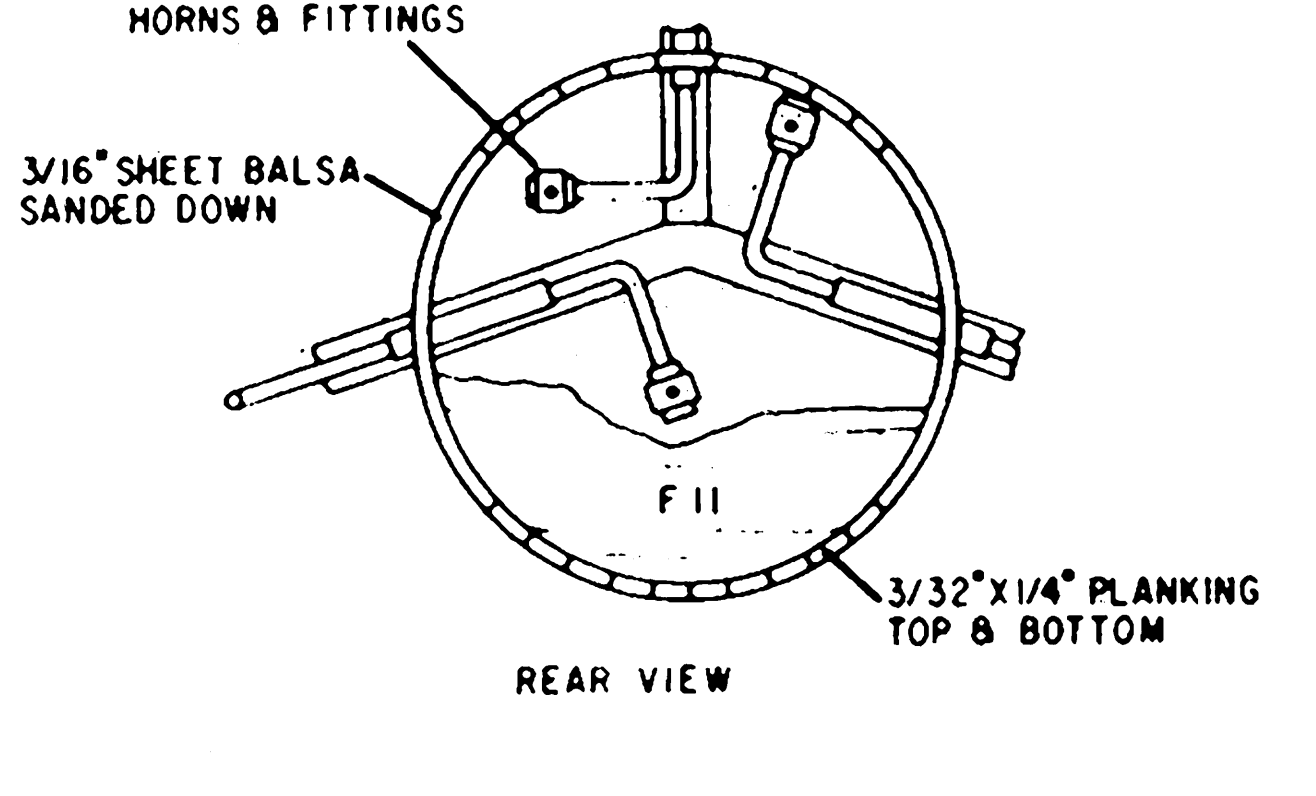
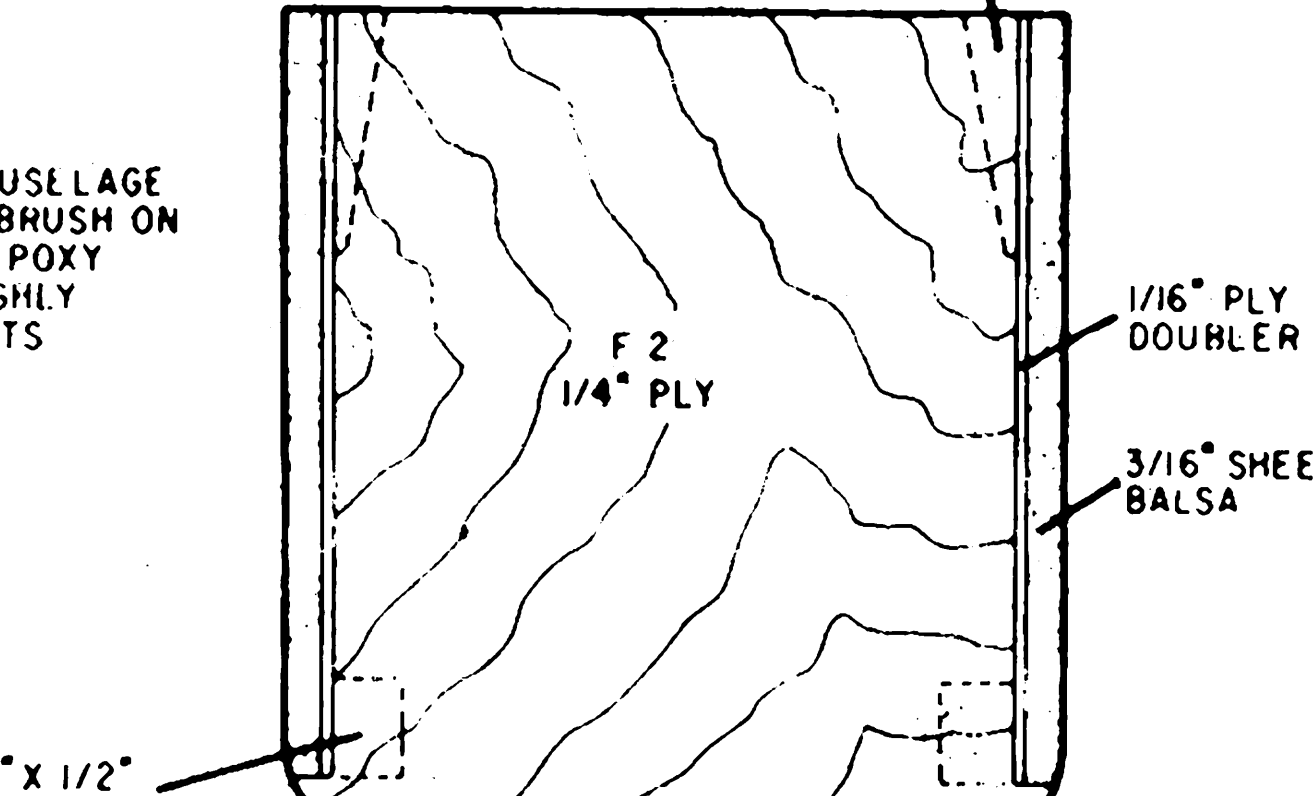
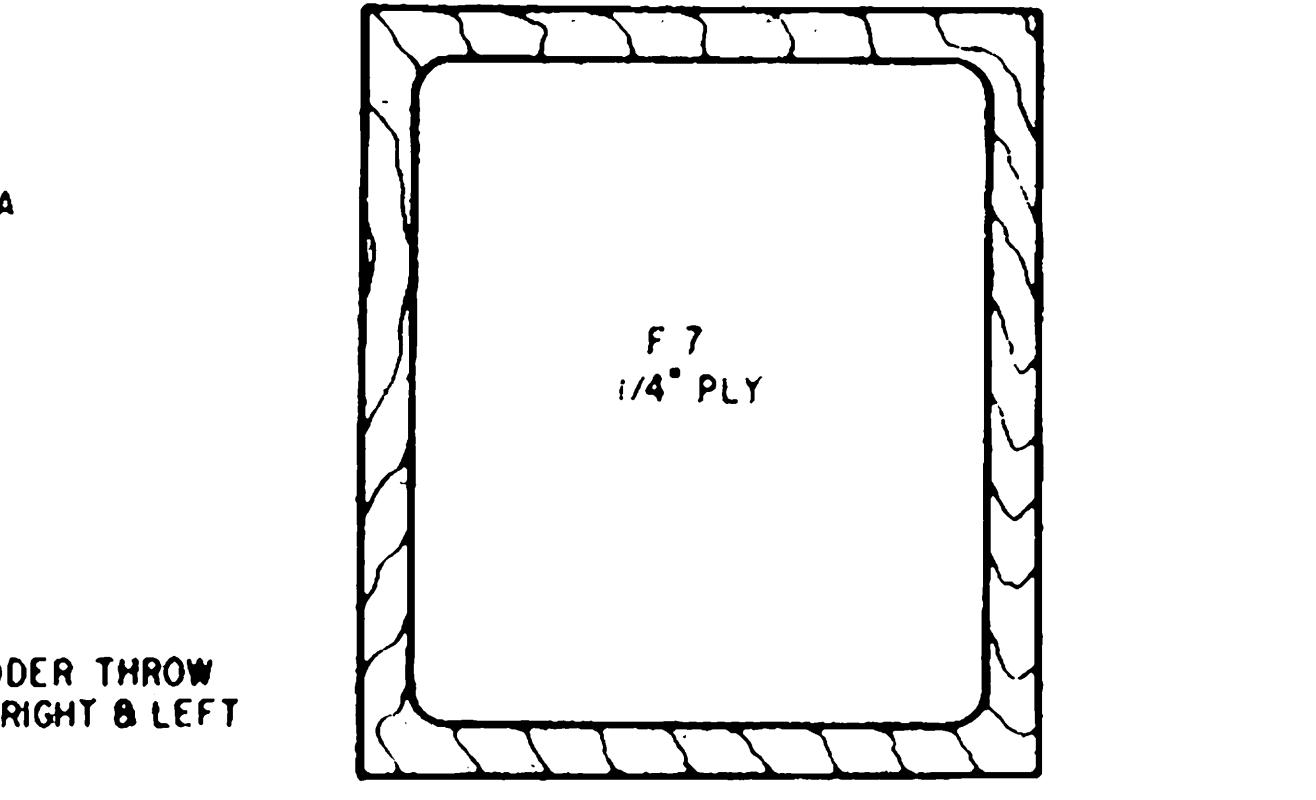
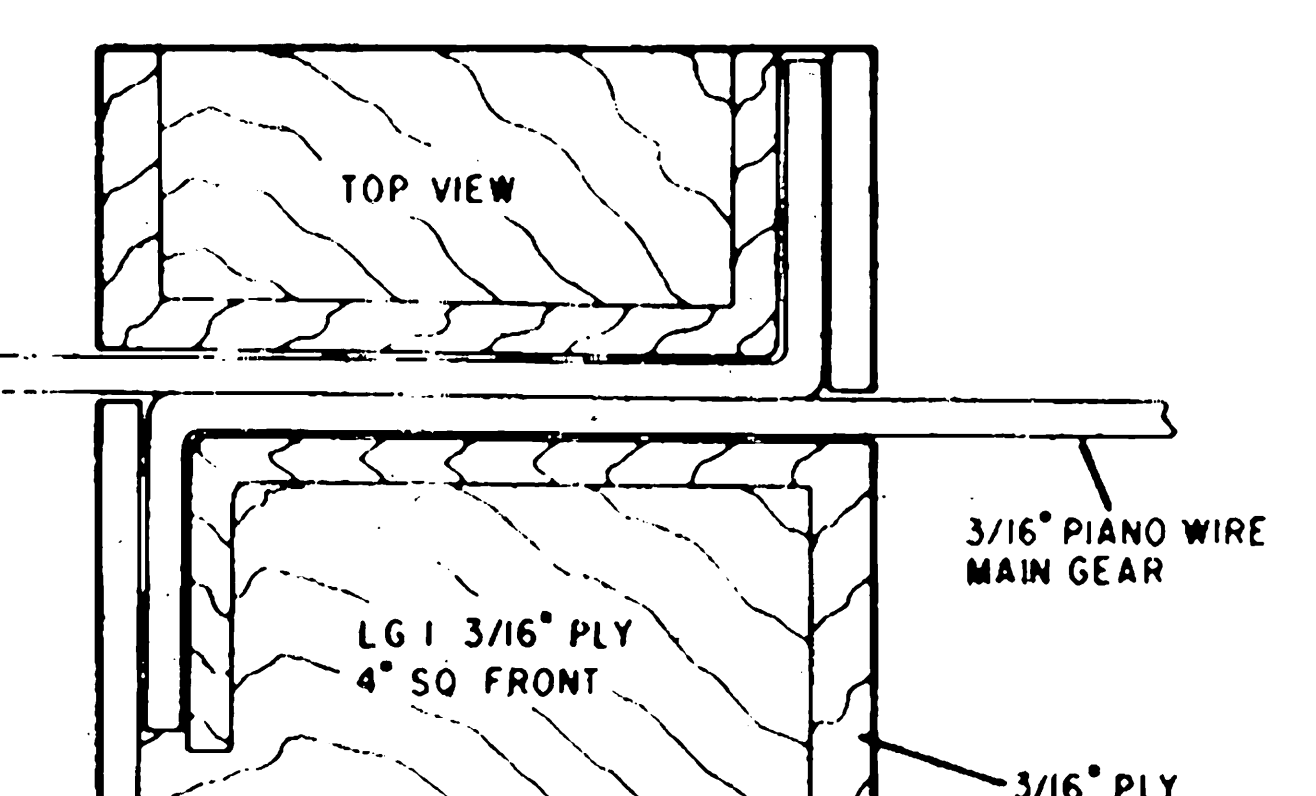
NOTE: ELEVATOR-TAIL SKID MAKE FLAT ROUNDING OFF LEADING & TRAILING EDGE ONLY.

NOTE: ELEVATOR-TAIL SKID MAKE FLAT ROUNDING OFF LEADING & TRAILING EDGE ONLY.

NOTE: ELEVATOR-TAIL SKID MAKE FLAT ROUNDING OFF LEADING & TRAILING EDGE ONLY.

NOTE: ENTIRE WING SHEETED WITH 3/32\"/>

NOTE: WING TIP CONSTRUCTION: EPOXY SHEETING N°1 & N°2 TOGETHER, LAY SHEETING FLAT OVER PLANS. EPOXY W3 & W4 IN PLACE, EPOXY TOP SHEETING N°1 & N°2 IN PLACE. AFTER EPOXY HAS CURED FINISH TIP WITH SHEET N°3 TOP & BOTTOM.



PHANTOM

DESIGNED & DRAWN BY EARL WITTE INKED BY GERARDO FLORES

0 1 2 3 4 5 6