


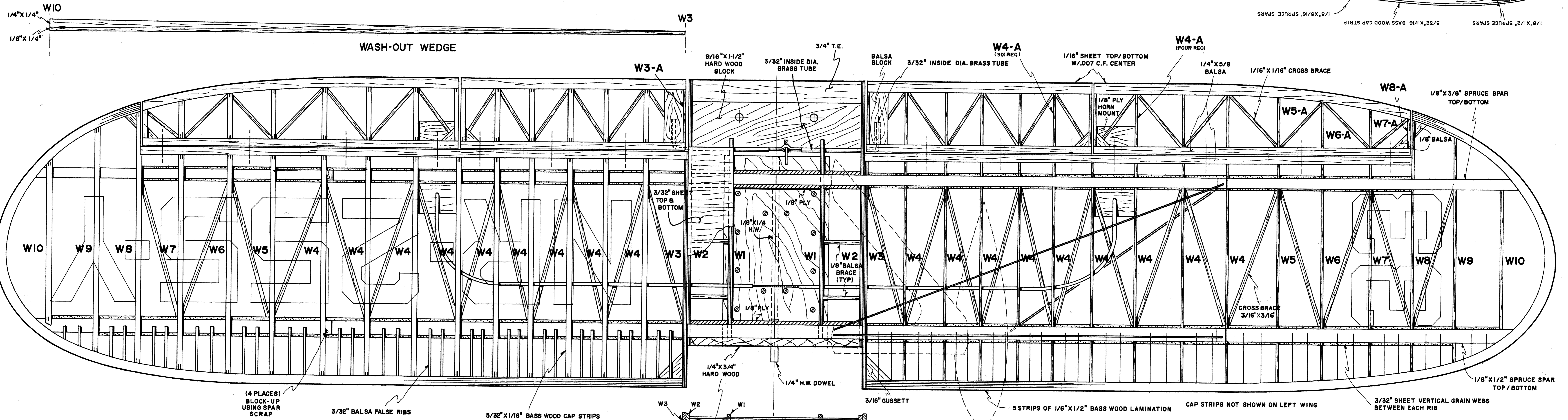
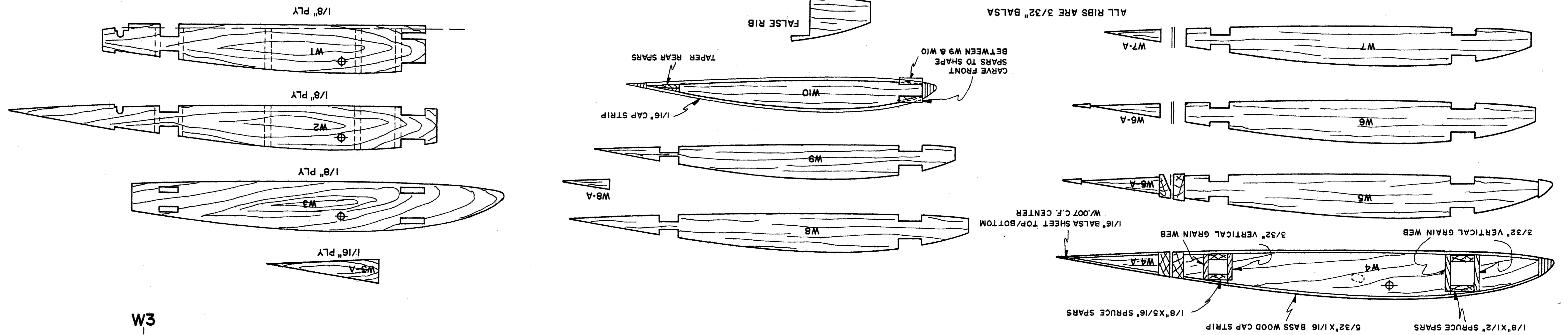
NOTE:
SEE CROSS SECTION AT F4-F3

NOTE:
ALL FORMERS ARE 1/8" Balsa
UNLESS NOTED.

SCALE
2-3/4" = 1"

BROWN - 2
"Miss Los Angeles"
DESIGNED-DRAWN & INKED BY:
AL HOLMES


Miss Los Angeles
 Brown B-2
 Designed and Drawn By:
 Al Holmes
 Plan #1320

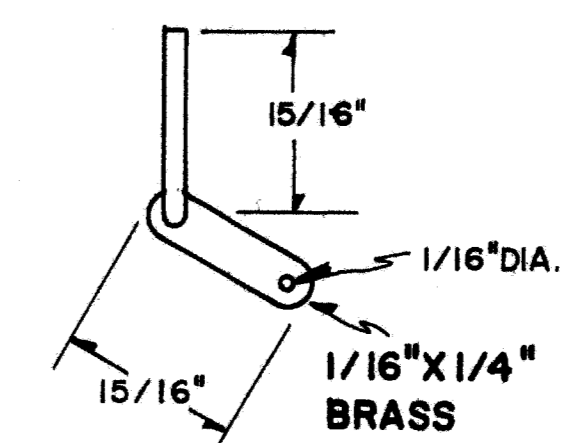
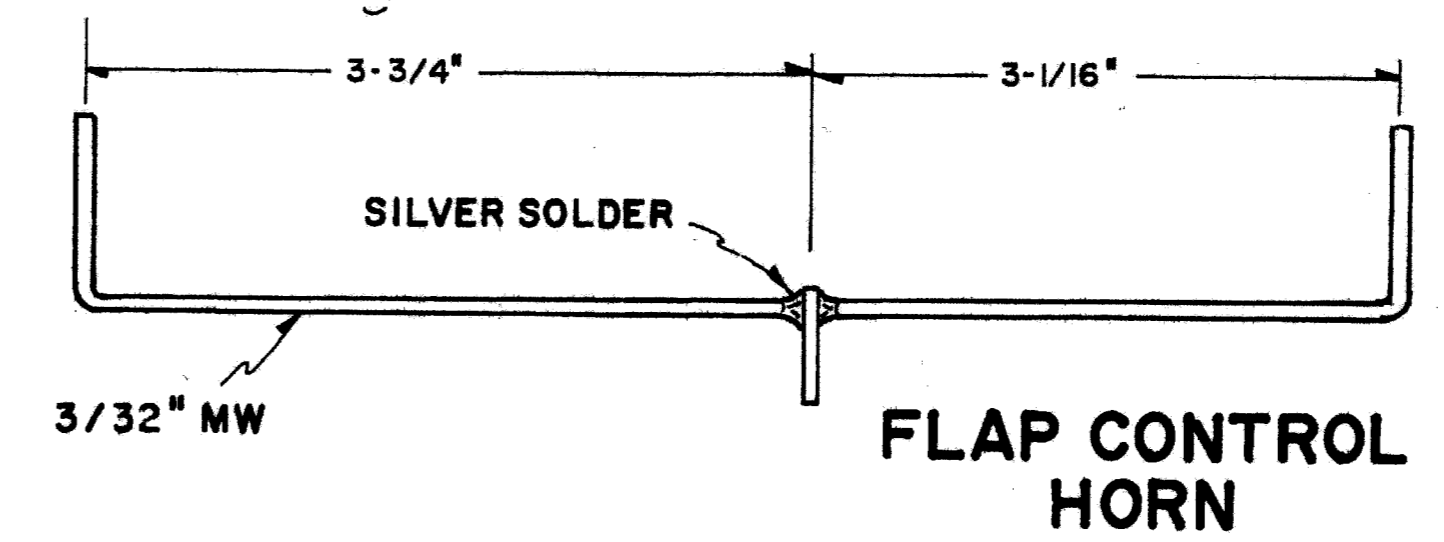
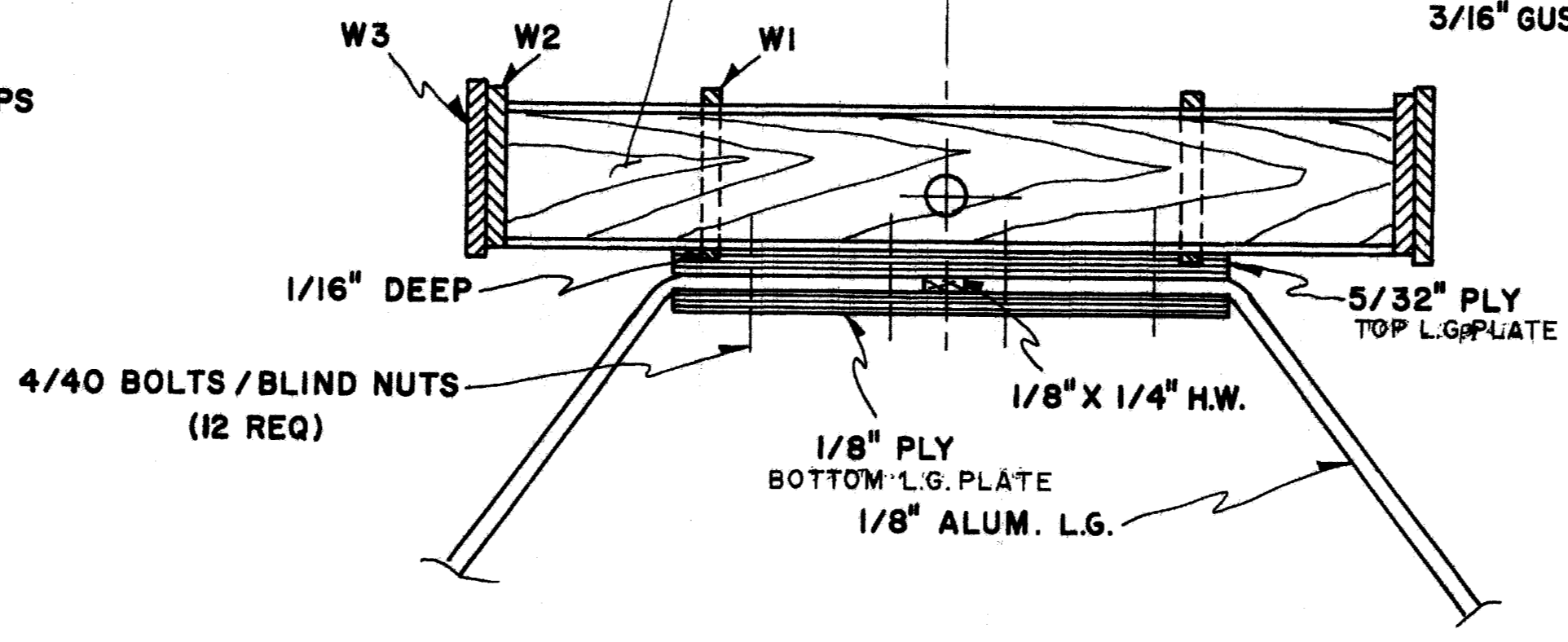


(4 PLACES)
BLOCK-UP
USING SPAR
SCRAP

3/32" Balsa FALSE RIBS

5/32" X 1/16" BASS WOOD CAP STRIPS

NOTE: WING RIBS ARE NOT EVENLY SPACED. THIS IS SCALE AND WAS DONE TO BETTER DISTRIBUTE AERODYNAMIC LOADS.



NOTE:
RACE NO. "33" TOP LEFT WING, BOTTOM RIGHT.
REG. NO. "NR-255-Y" TOP RIGHT WING, BOTTOM LEFT.

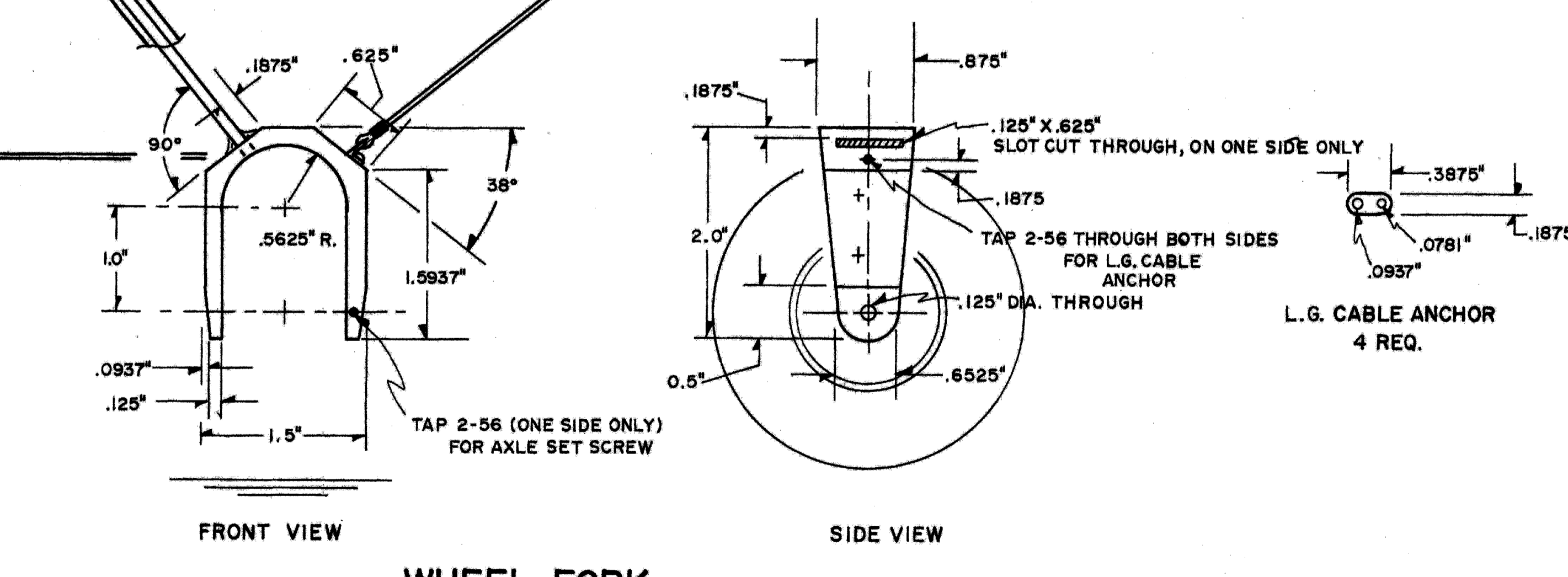
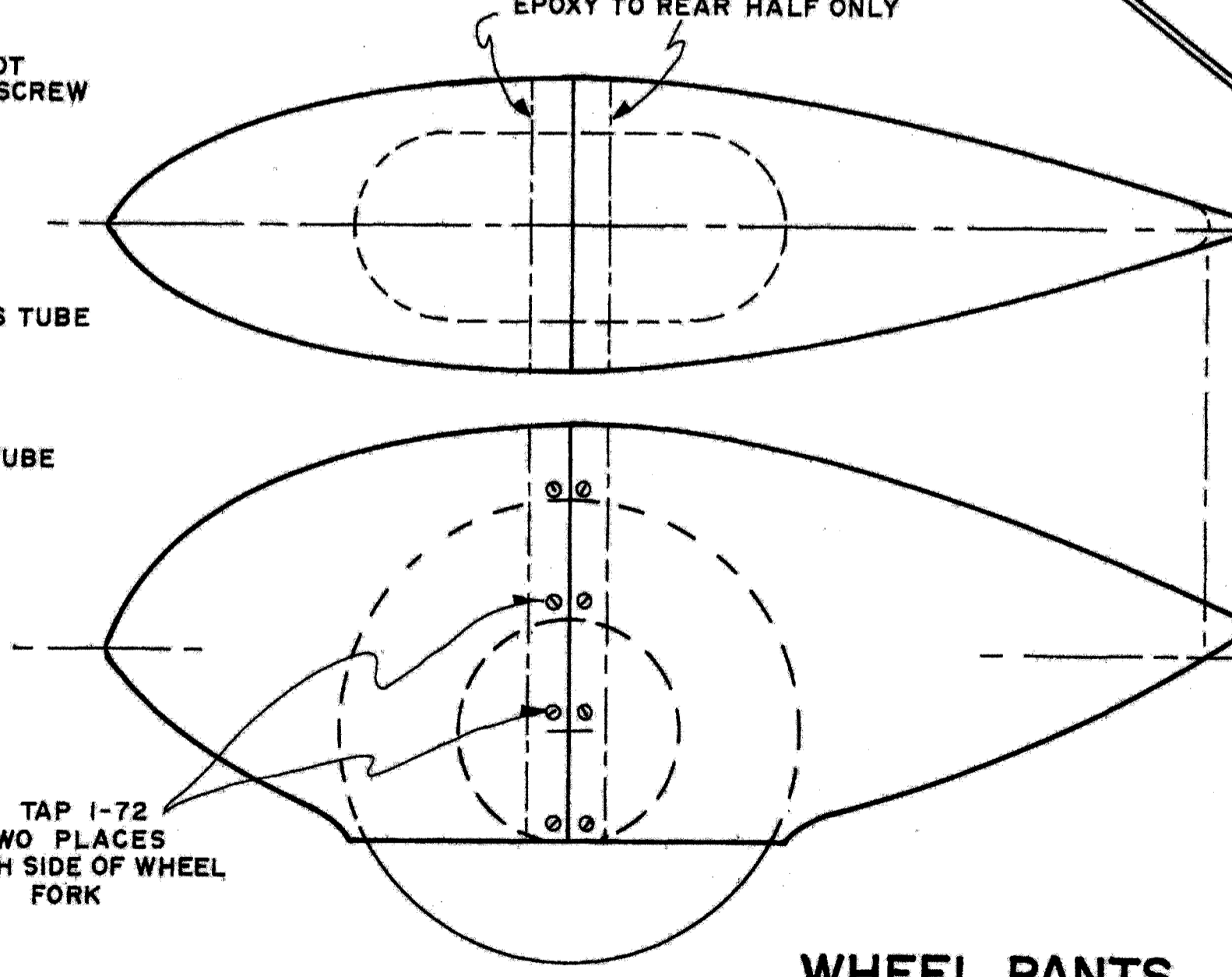
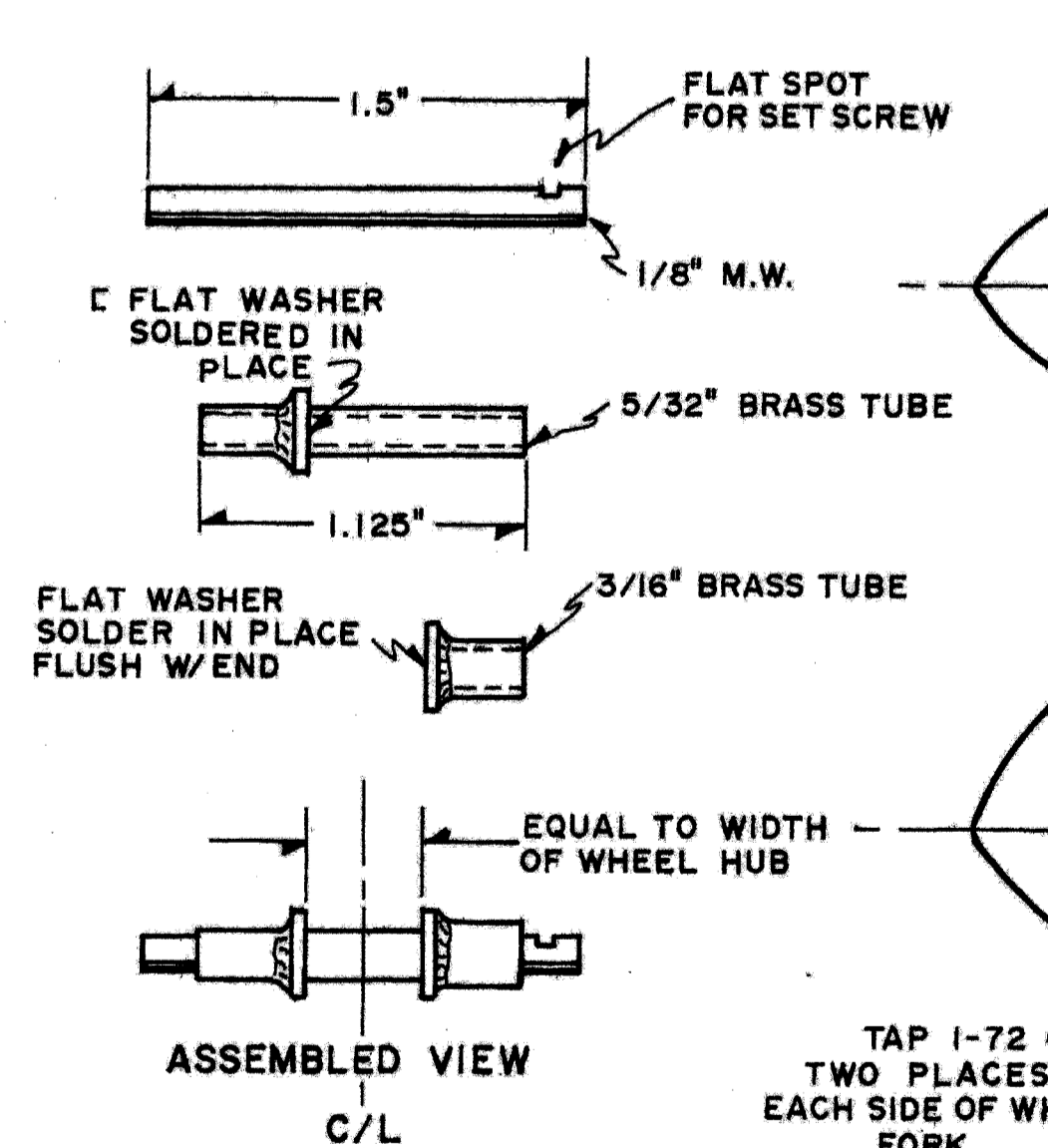
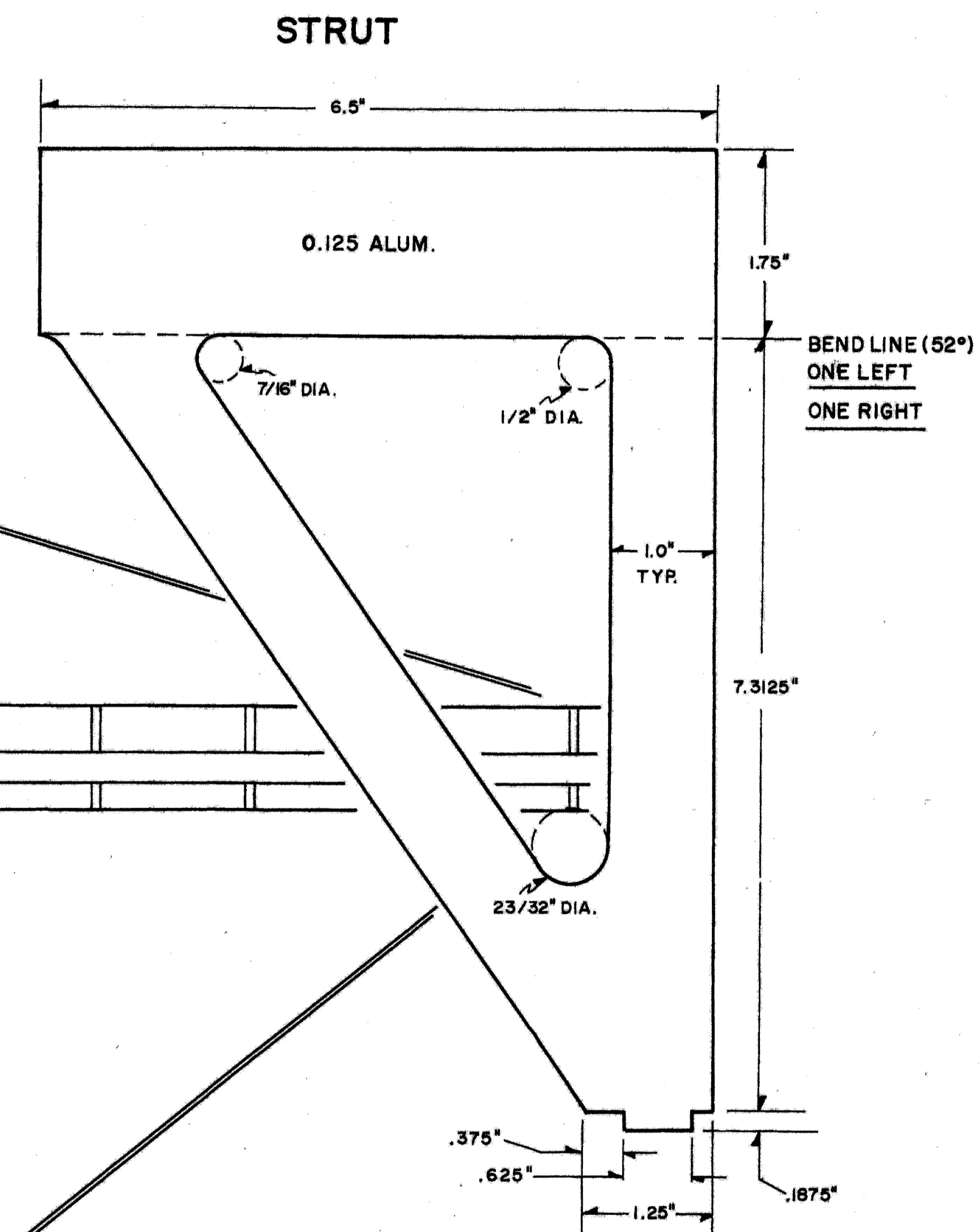
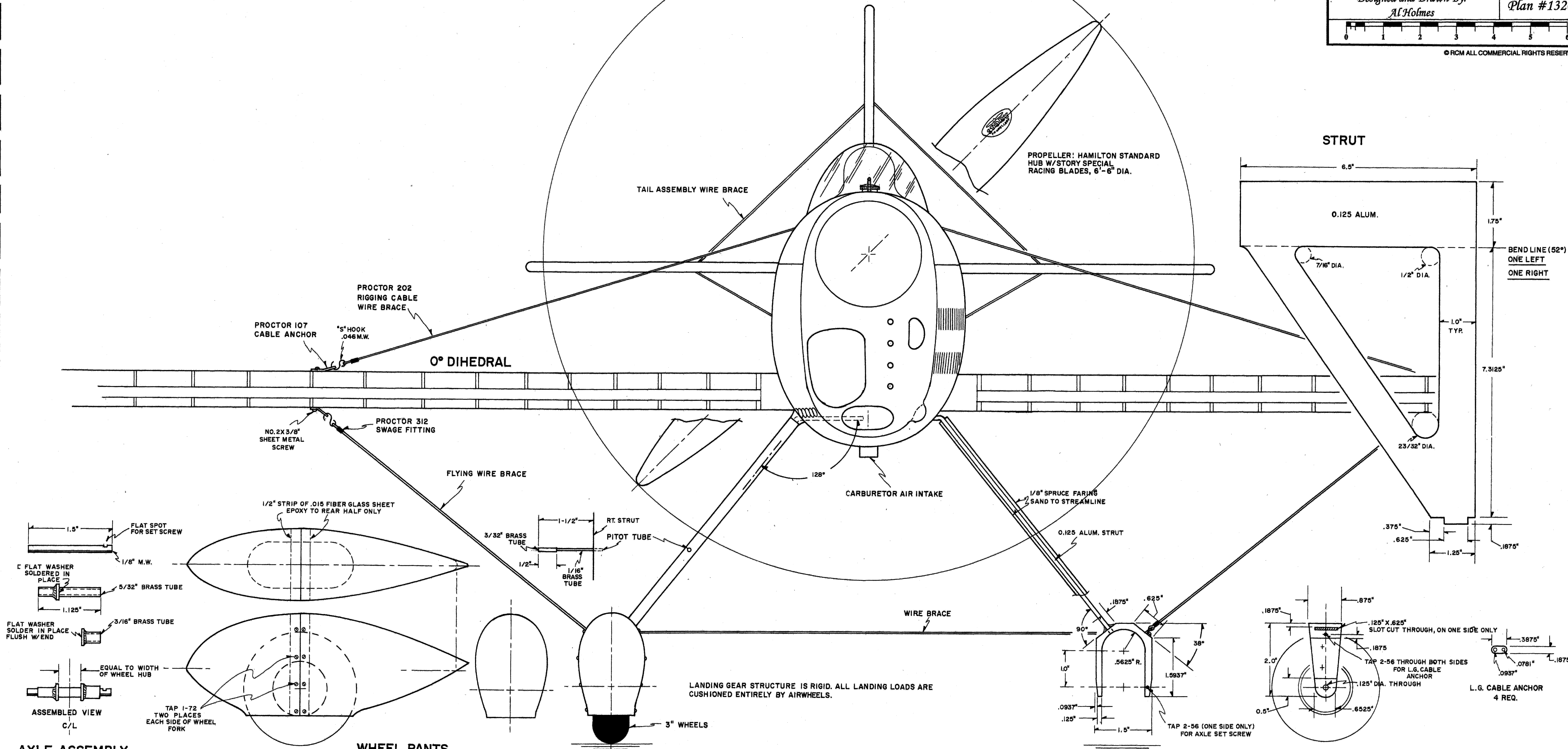
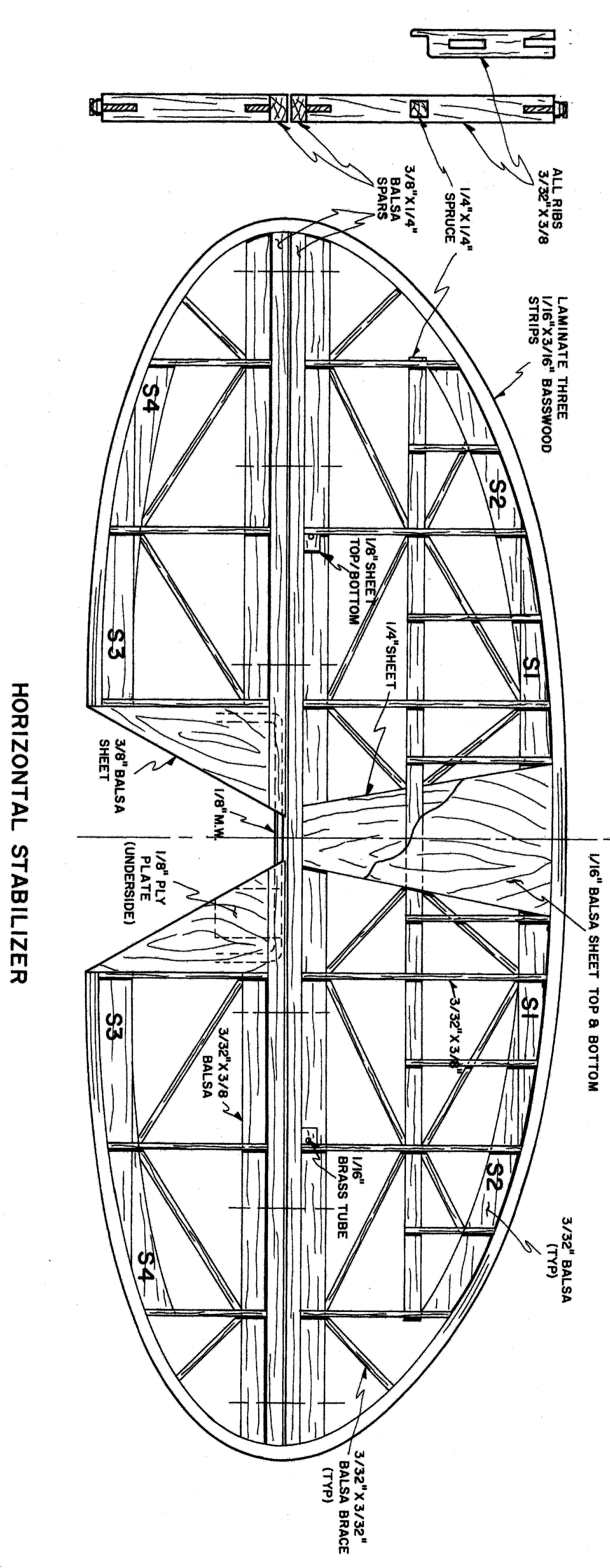
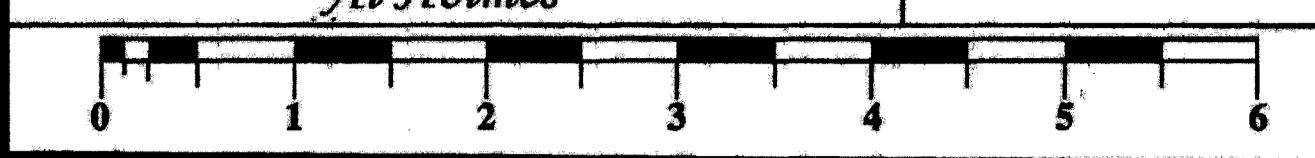
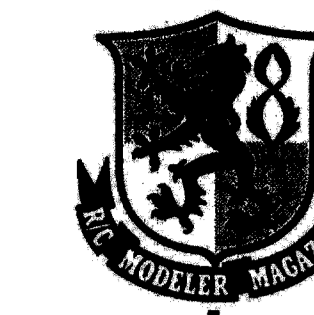
WING AREA 530 SQ. IN - SPAN 53.5"

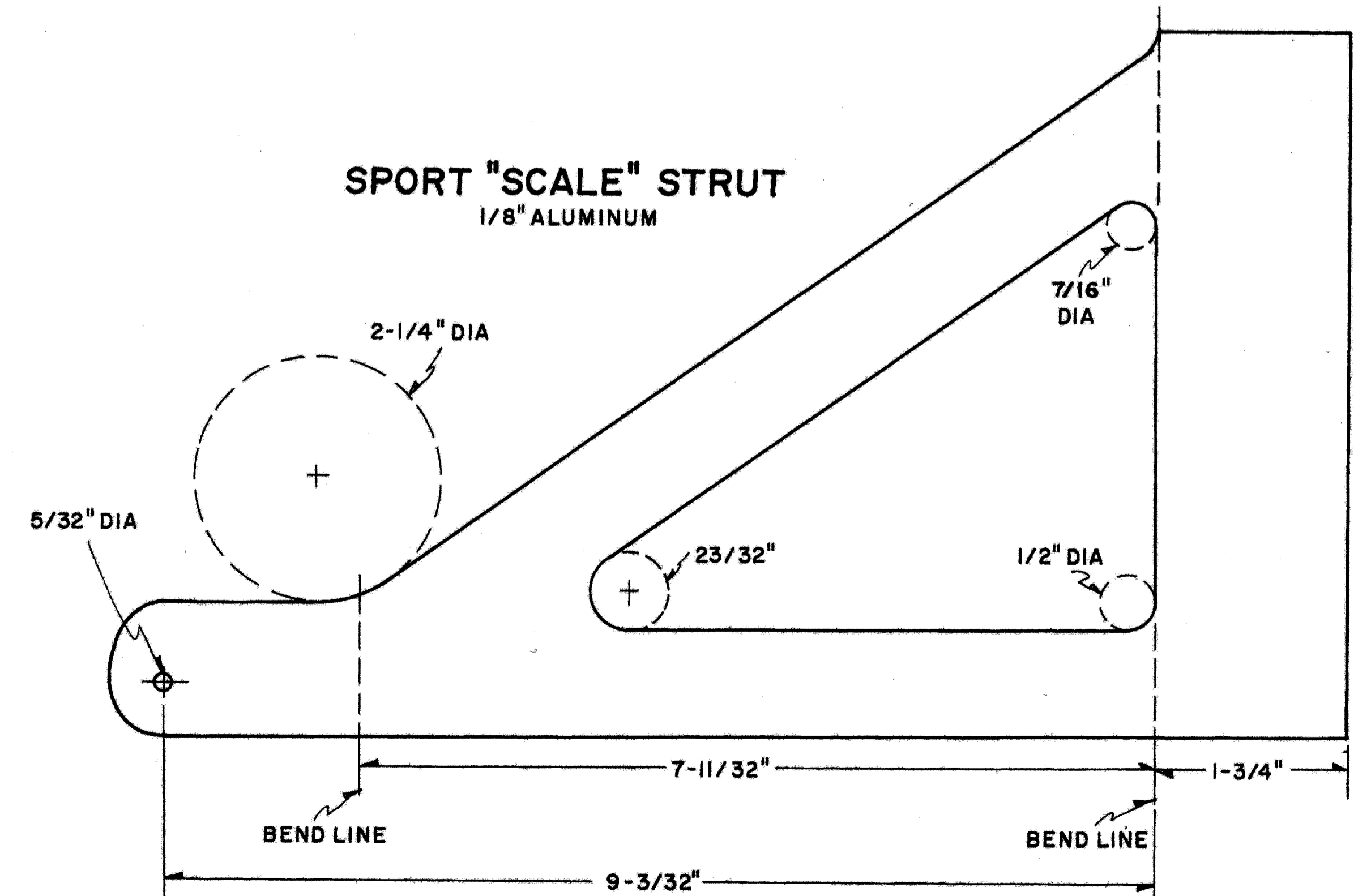
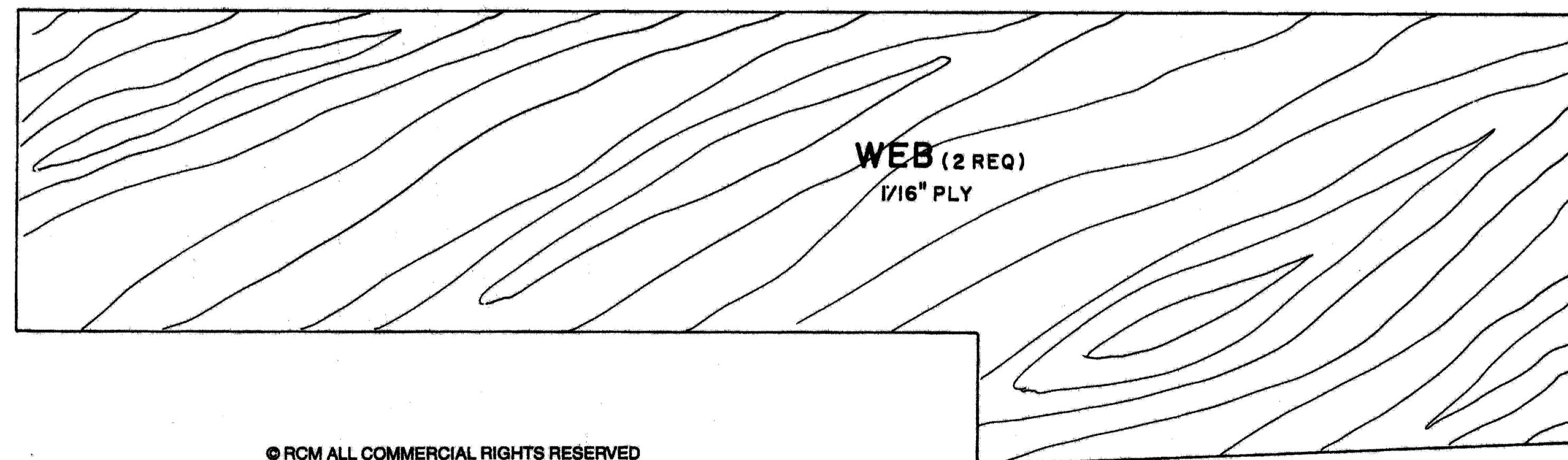
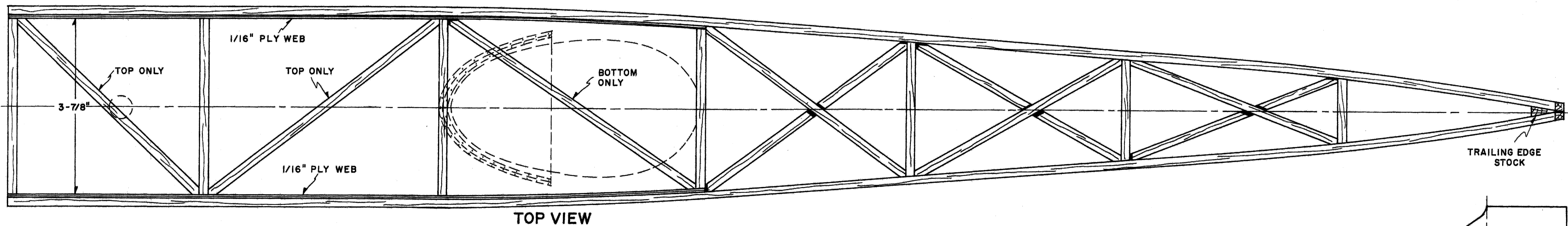
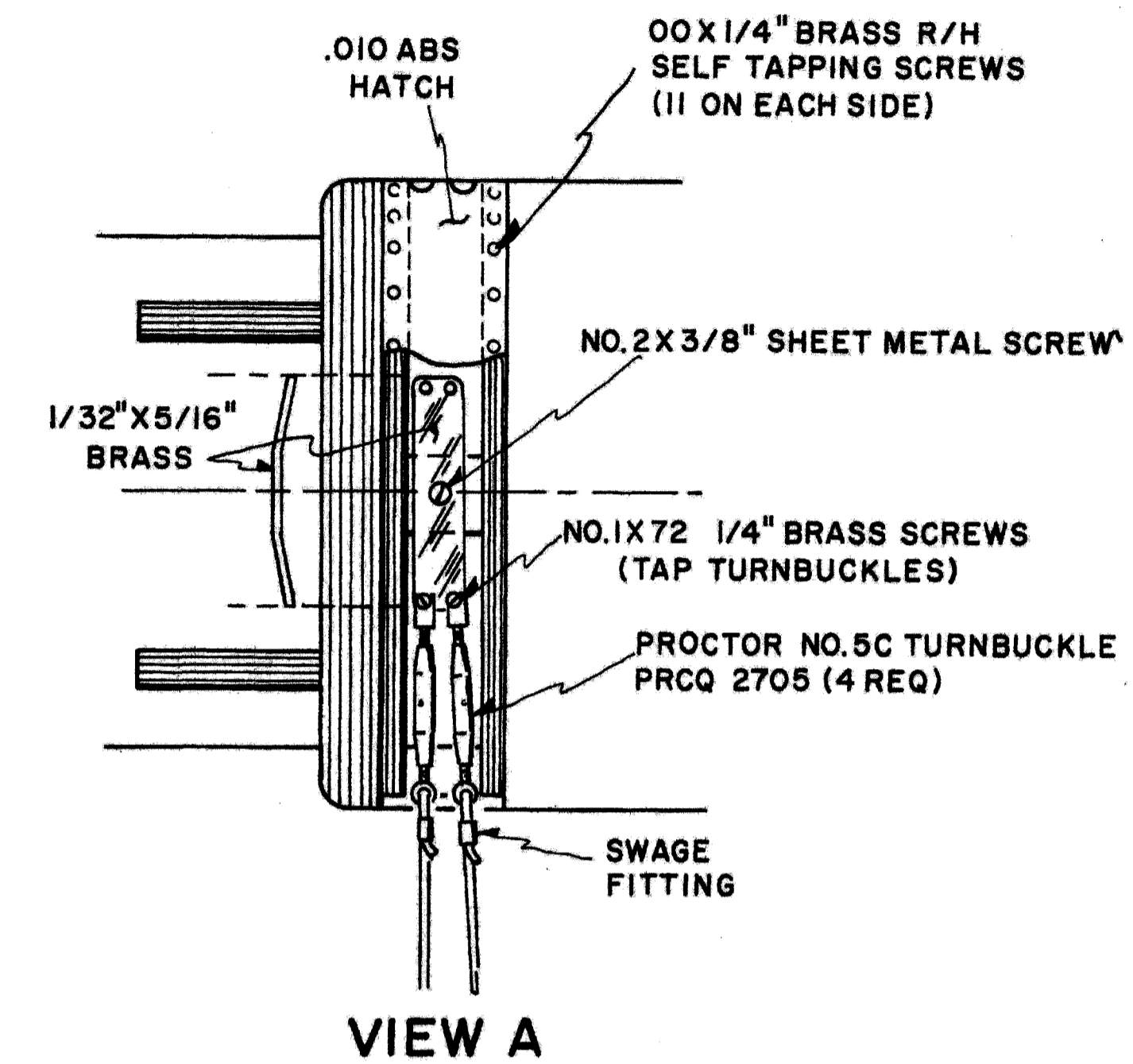
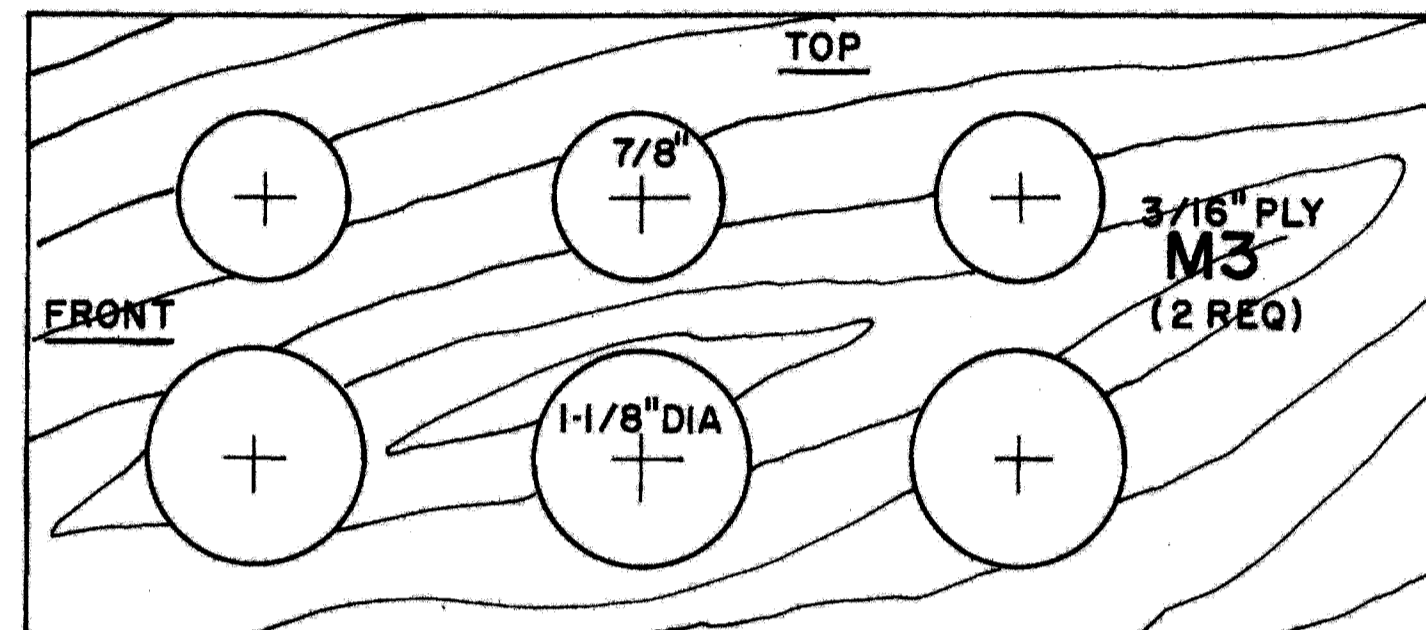
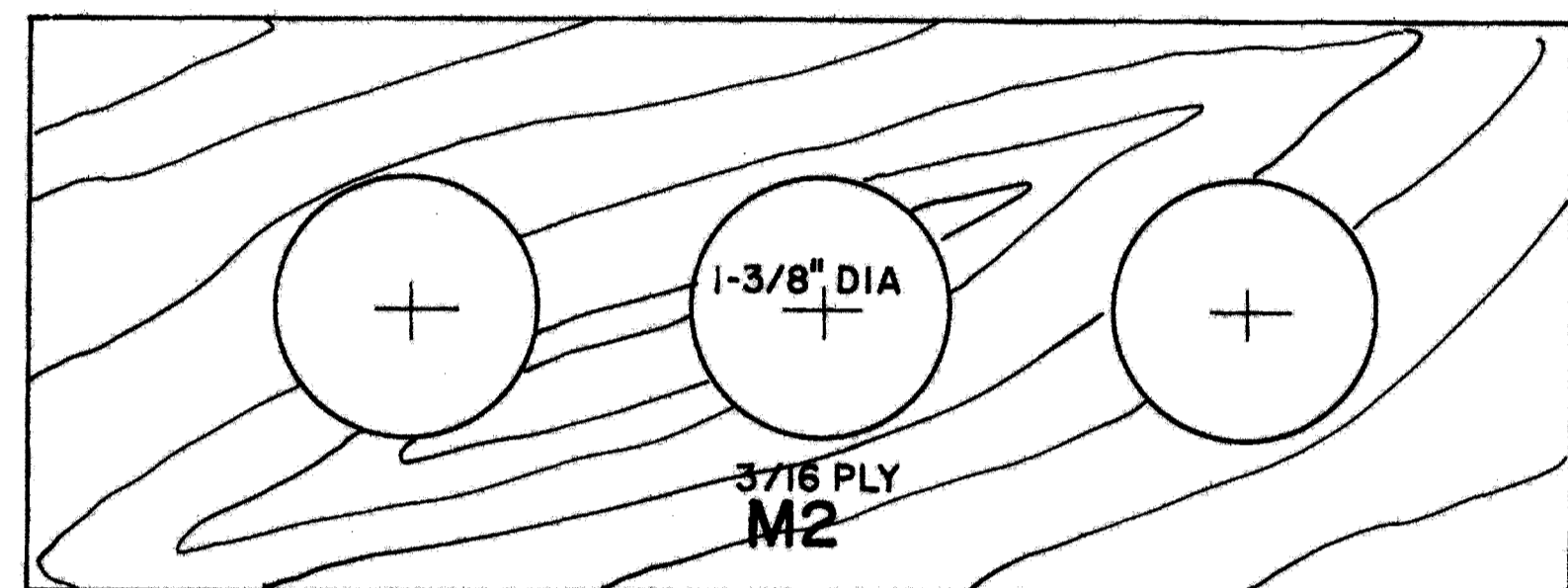
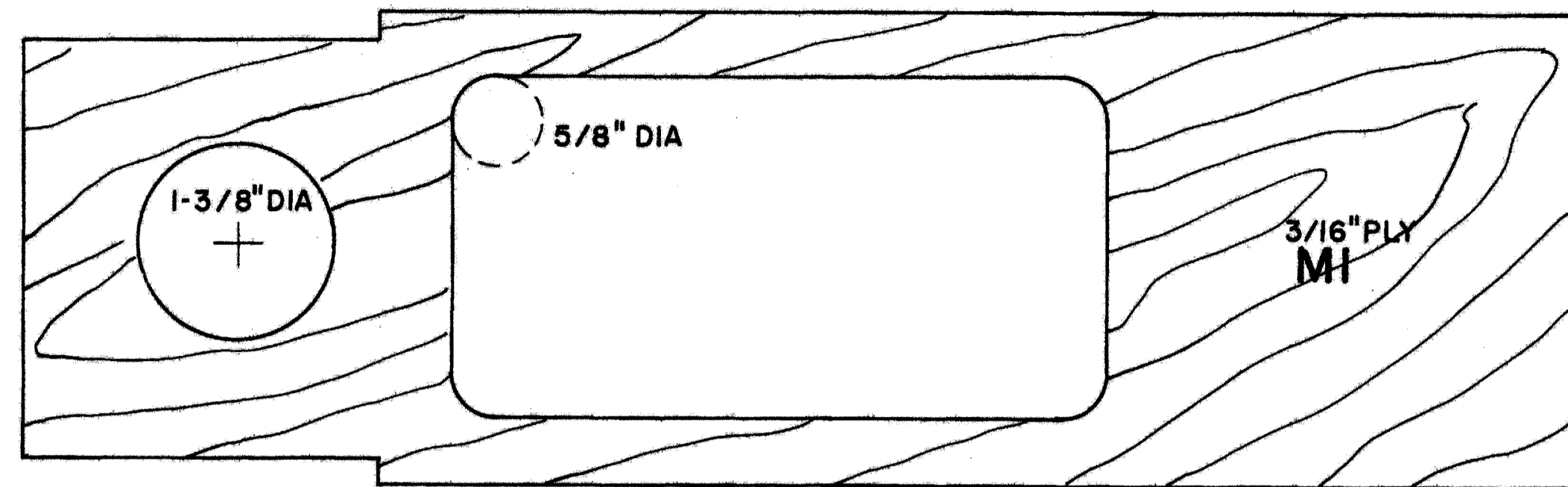
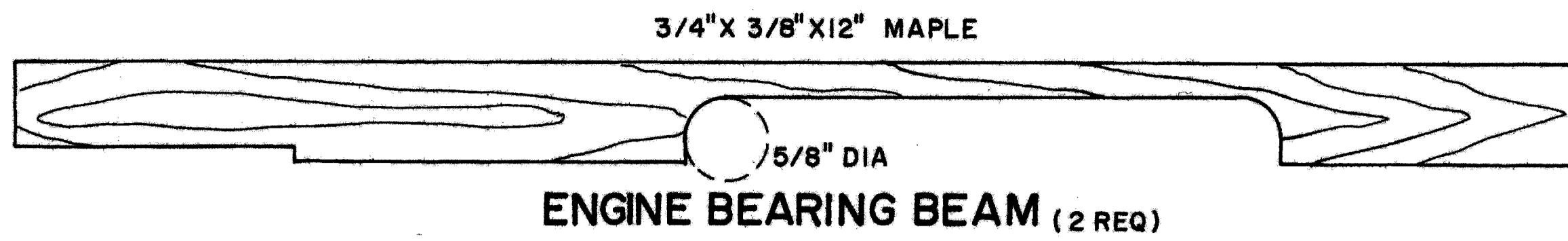
©RCM ALL COMMERCIAL RIGHTS RESERVED

Miss Los Angeles

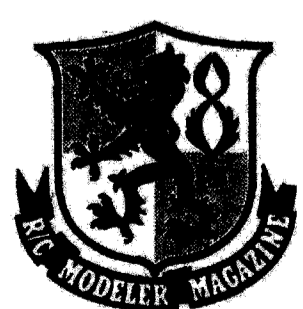
Brown B-2

Designed and Drawn By: *Al Holmes* Plan #1320





© RCM ALL COMMERCIAL RIGHTS RESERVED



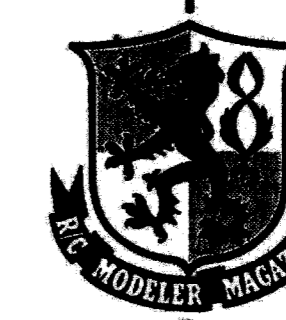
Miss Los Angeles

Brown B-2

Designed and Drawn By:
Al Holmes

Plan #1320





Miss Los Angeles

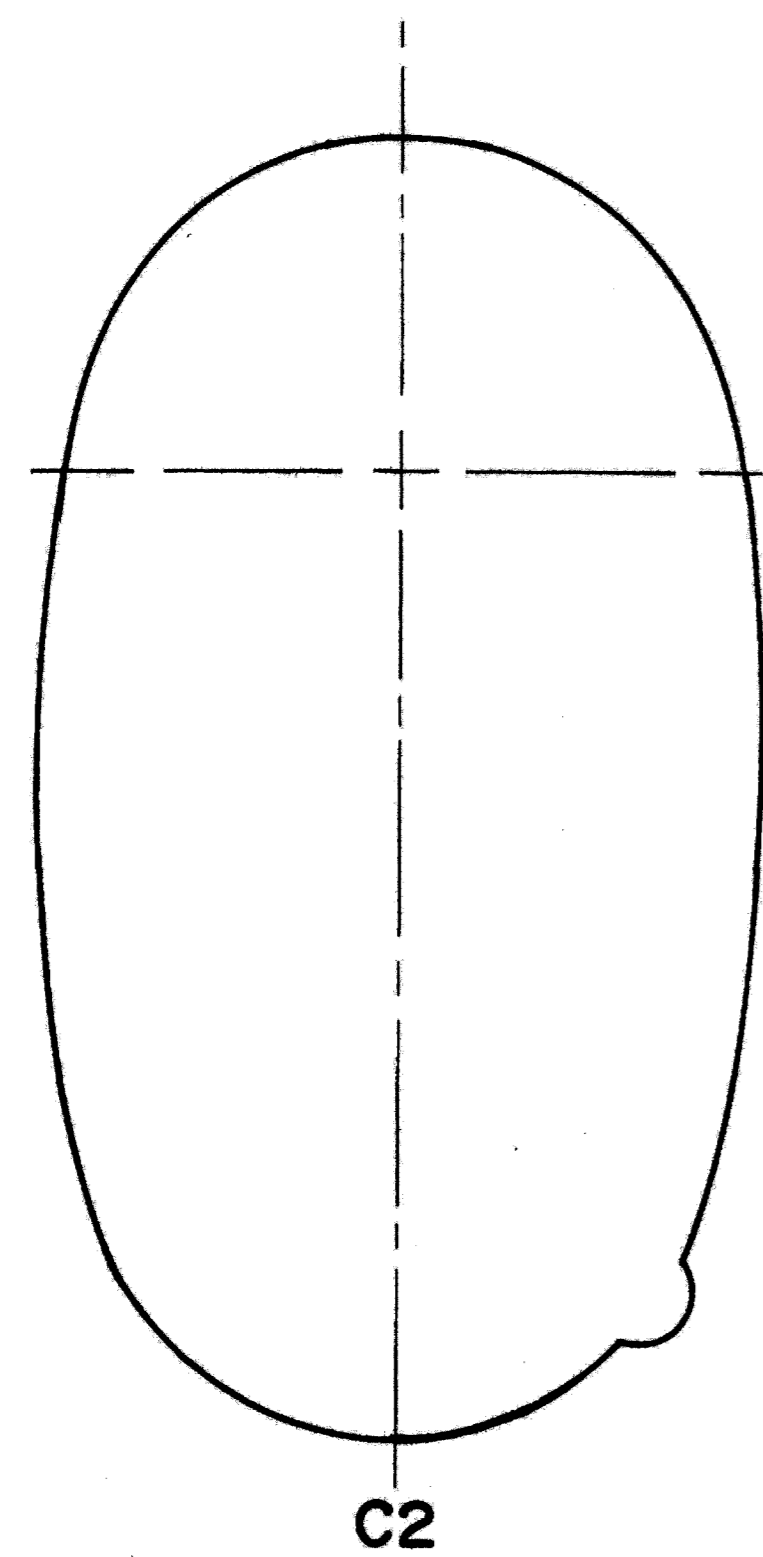
Brown B-2

Designed and Drawn By:
Al Holmes

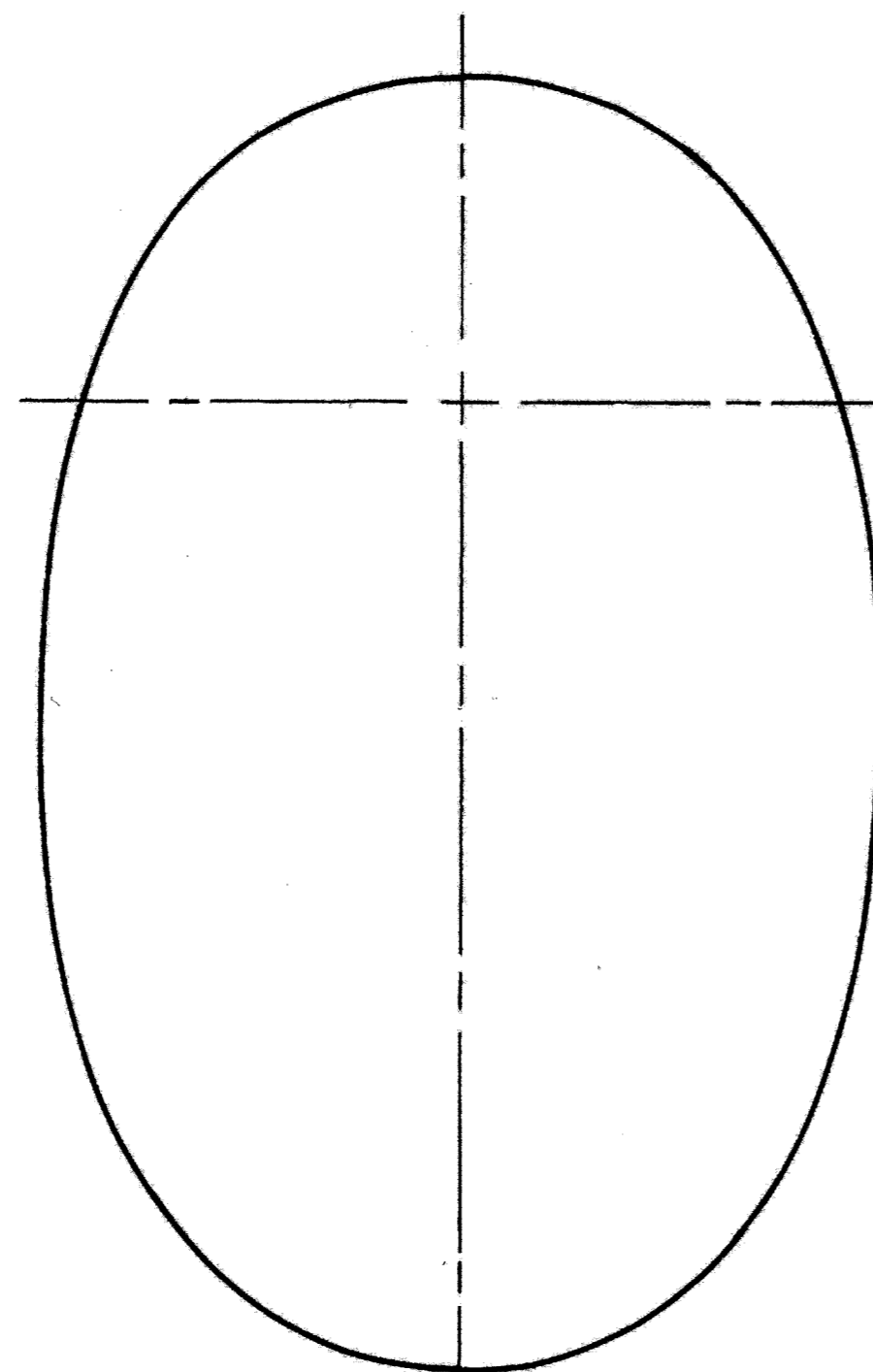
Plan #1320



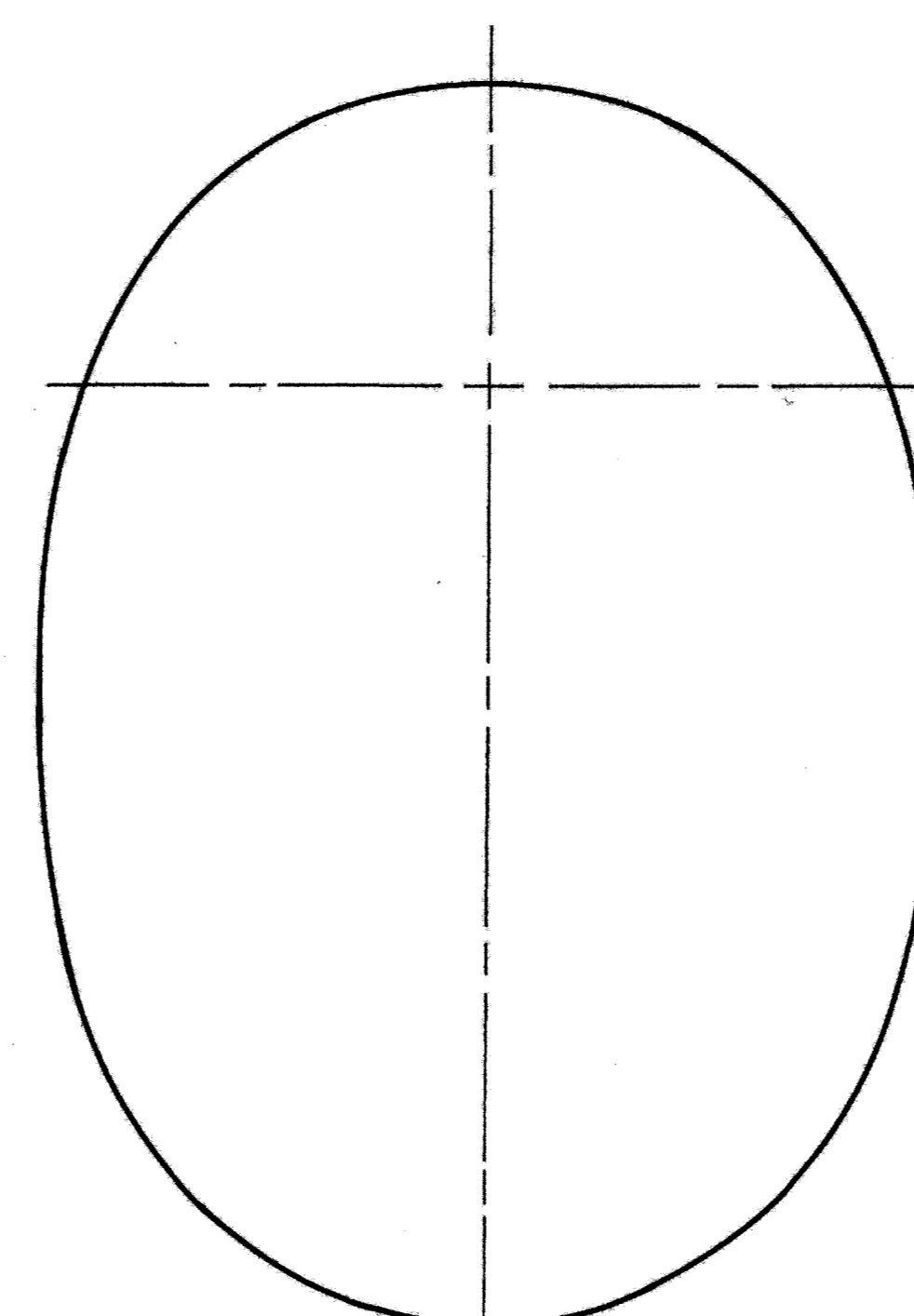
©RCM ALL COMMERCIAL RIGHTS RESERVED



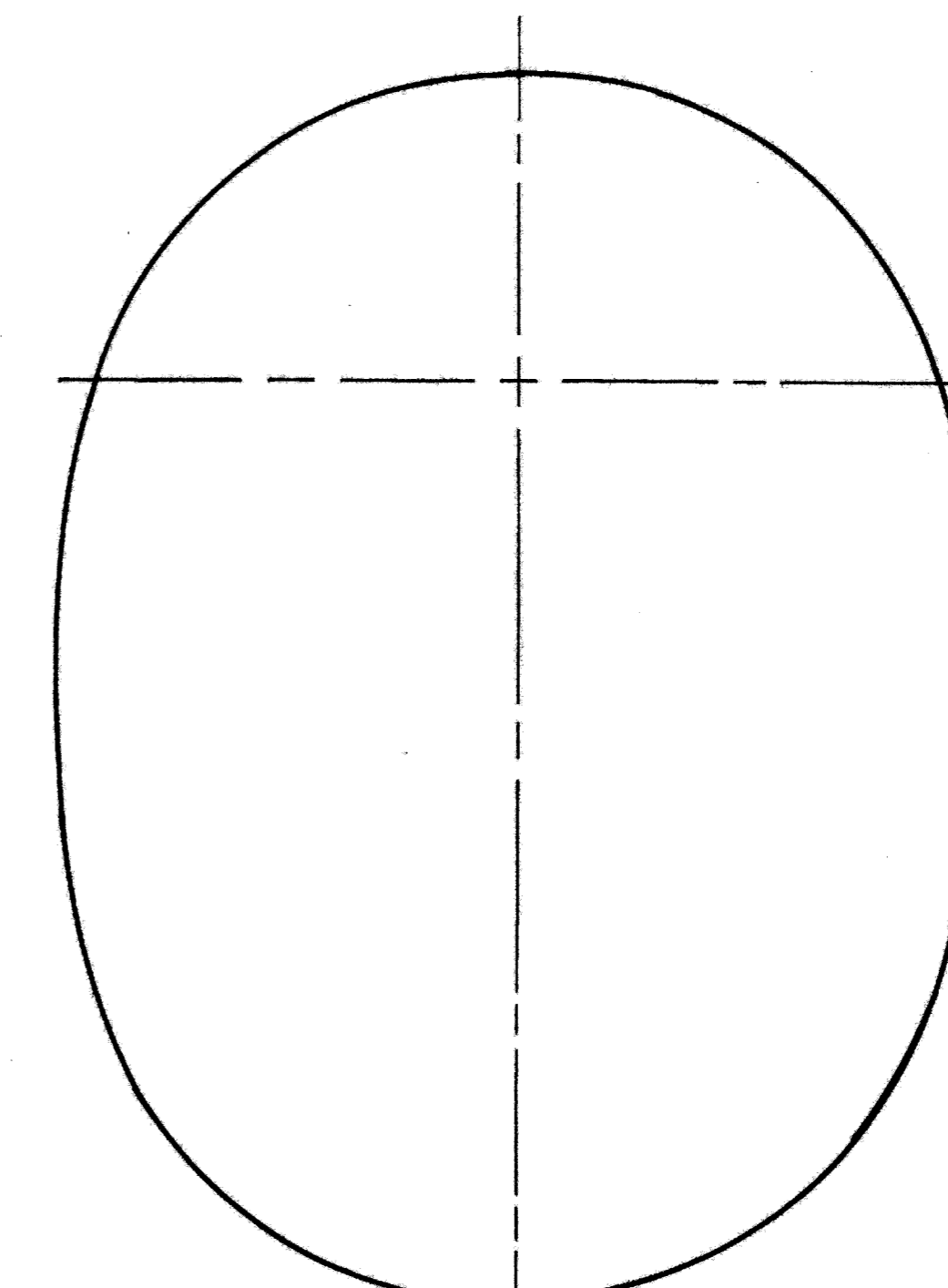
C2



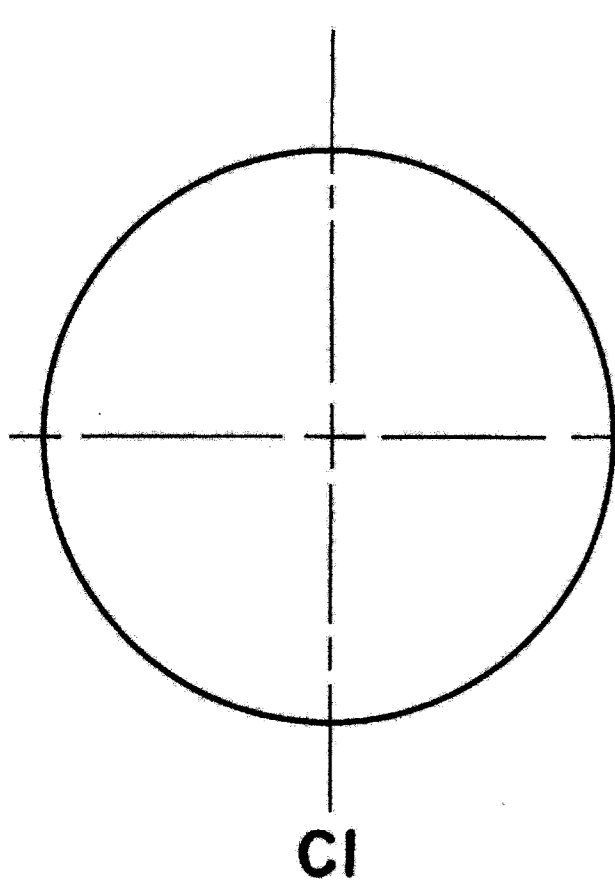
C3



C4



C5



C1

