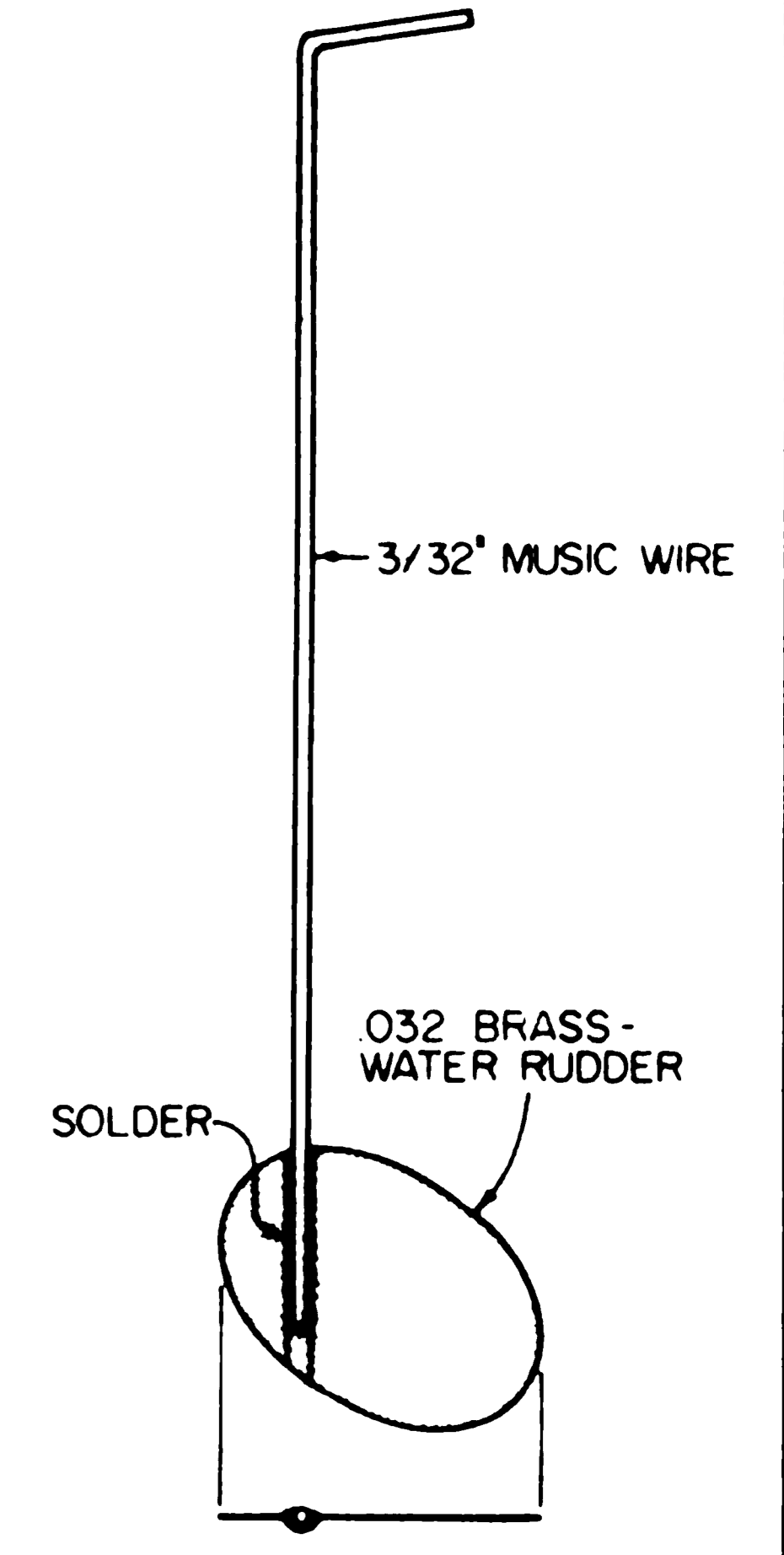
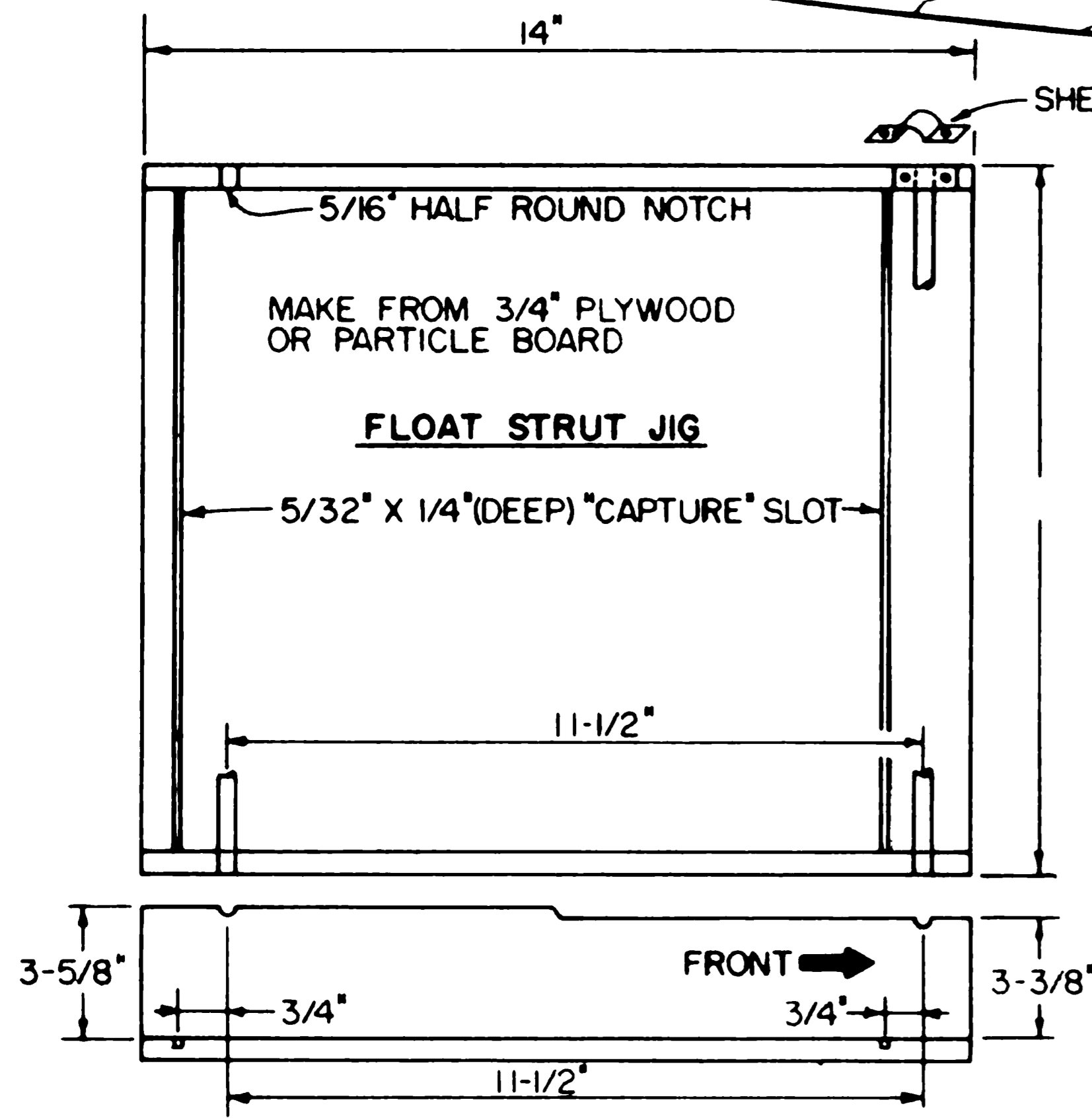


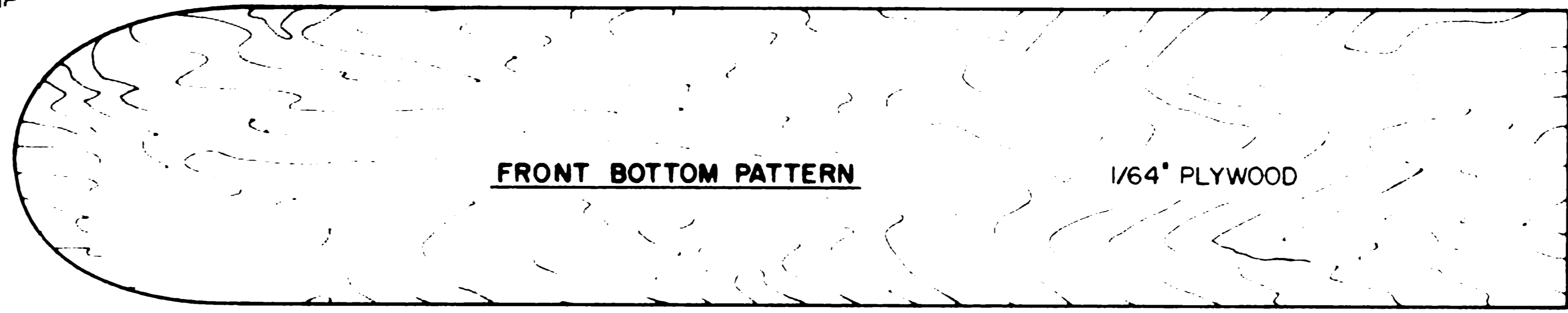
**PATTERN FOR TOP SHEETING**



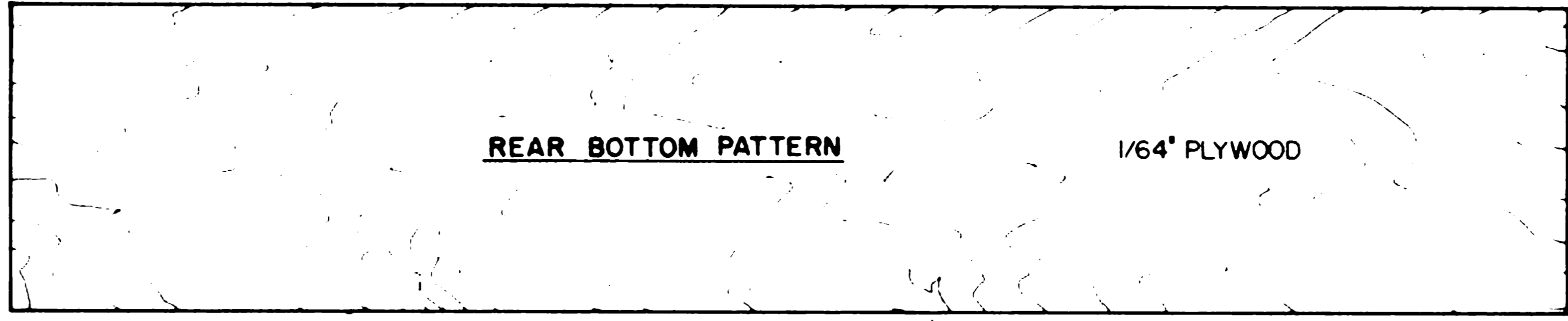
**WATER RUDDER DETAIL**



**FLOAT STRUT JIG**

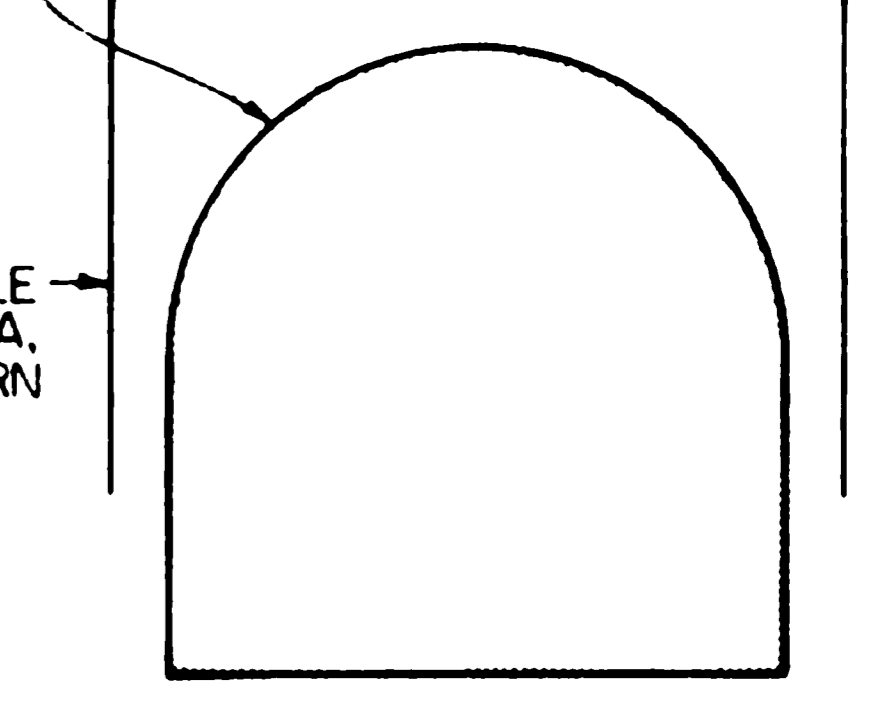


**FRONT BOTTOM PATTERN**

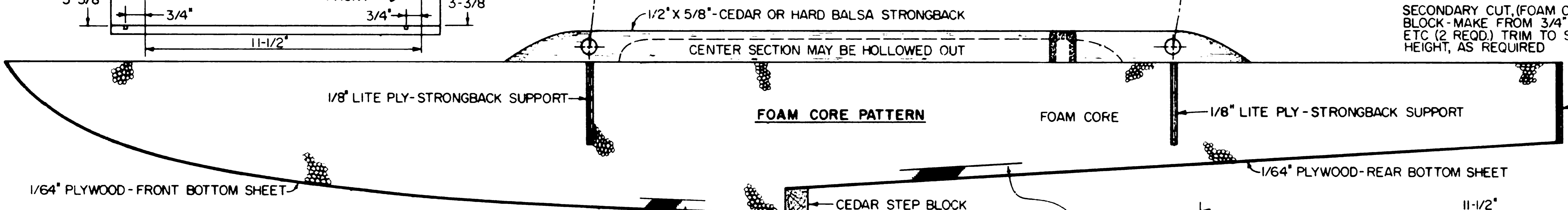


**REAR BOTTOM PATTERN**

MAKE FROM FORMICA, 1/16" PLYWOOD, OR ALUMINUM (2 REQD)

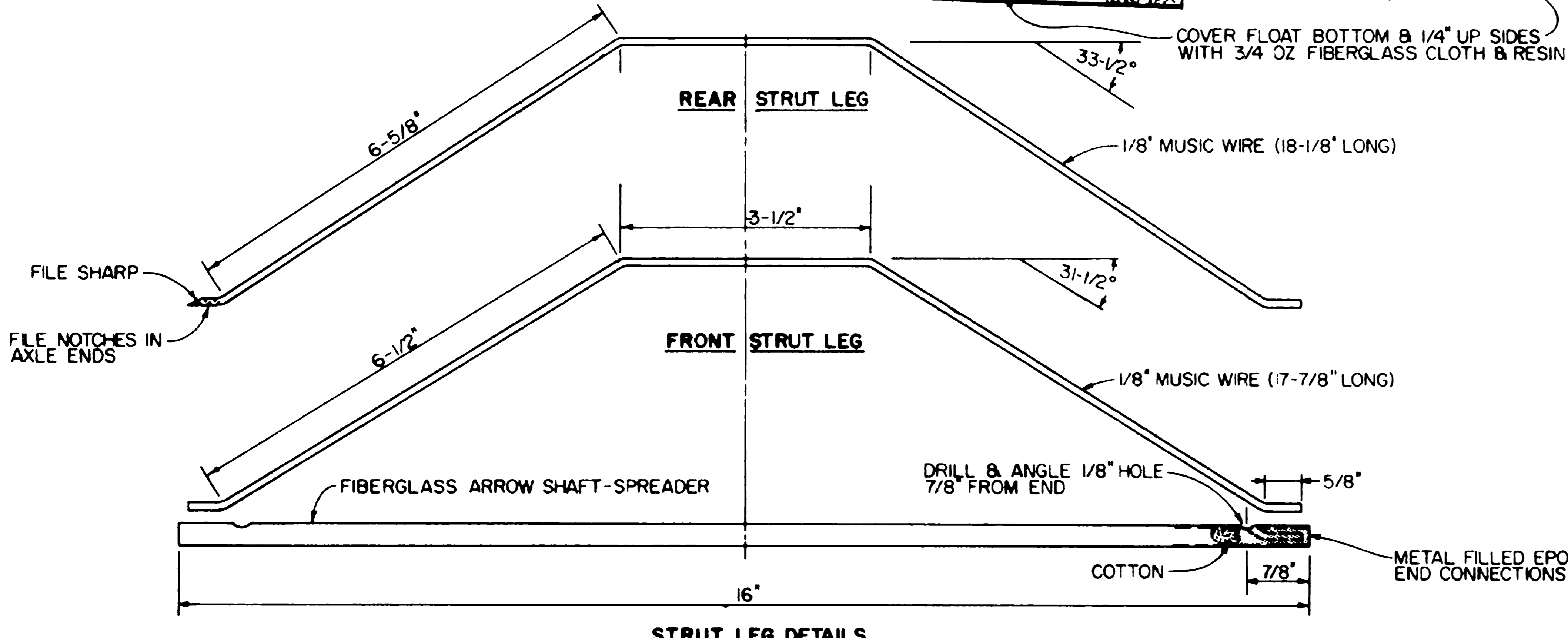


**FOAM CORE CROSS SECTION PATTERN**

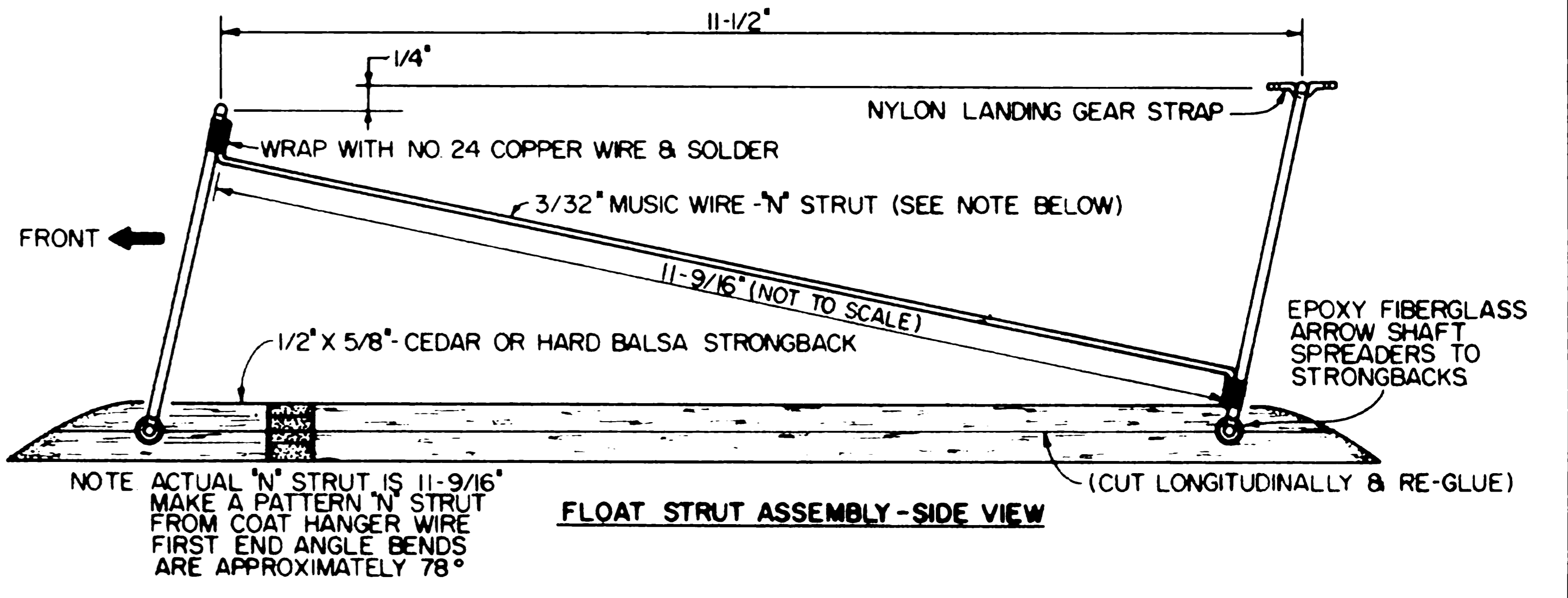


**FOAM CORE PATTERN**

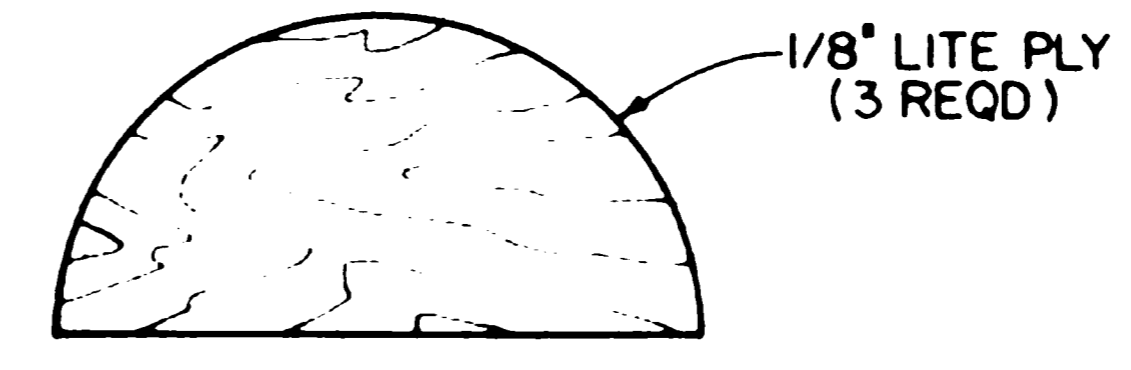
SECONDARY CUT, (FOAM CORE) CRADLE BLOCK - MAKE FROM 3/4" PINE, BALSAM, ETC (2 REQD.) TRIM TO SIDE PATTERN HEIGHT, AS REQUIRED



**STRUT LEG DETAILS**



**FLOAT STRUT ASSEMBLY - SIDE VIEW**



**TRANSOM & STRONGBACK SUPPORT PATTERN**



© ALL COMMERCIAL RIGHTS RESERVED

**LIGHT & UP**

A 40 POWERED SPORT SEAPLANE DESIGN

DESIGNED & DRAWN BY ED WESTWOOD

PLANS BY Bob Wallace

