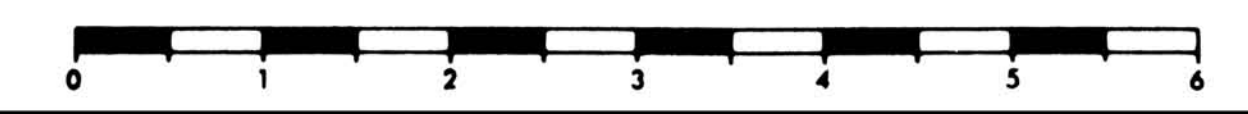


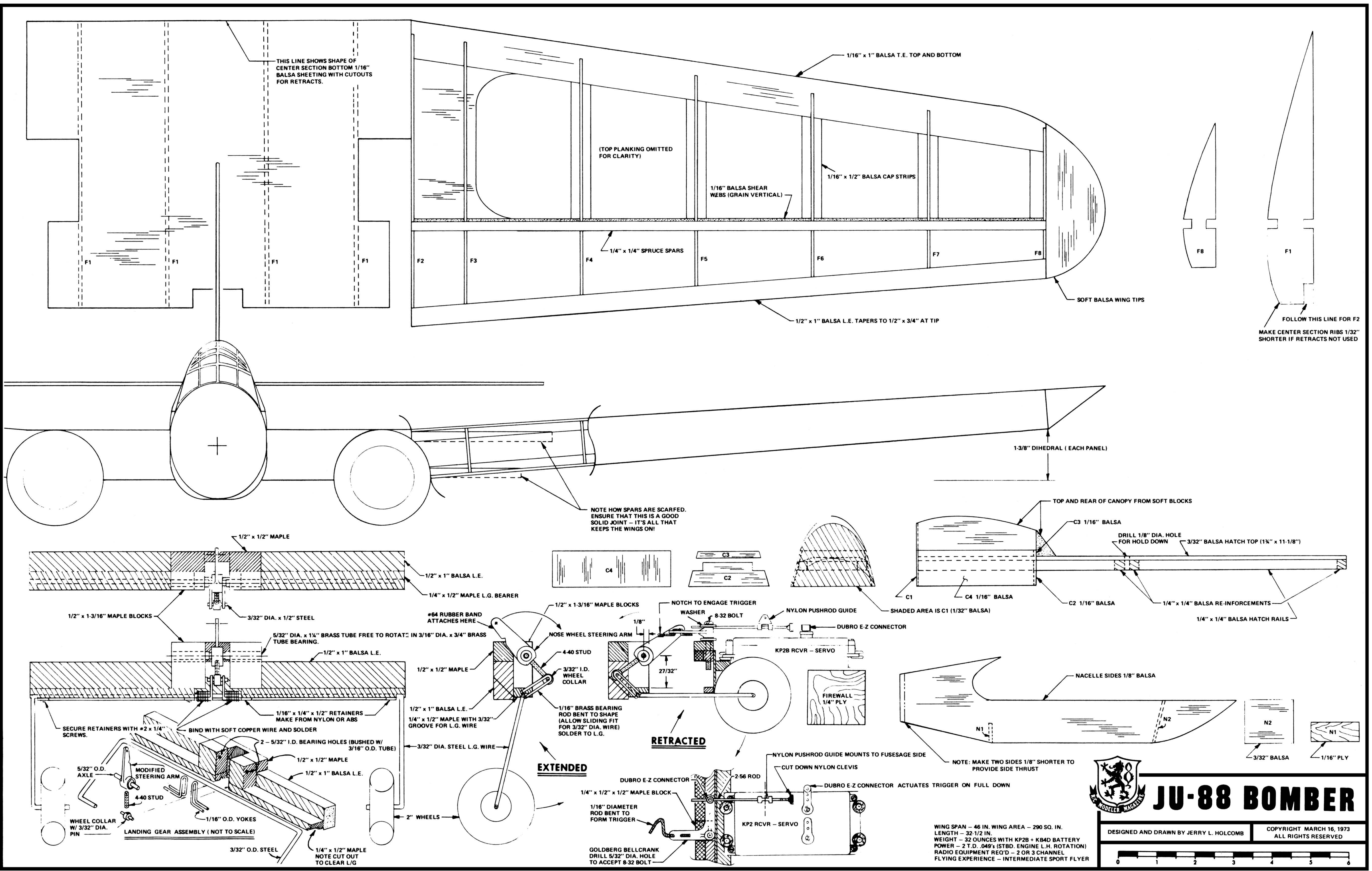
WING SPAN - 46 IN. WING AREA - 290 SQ. IN.
 LENGTH - 32 1/2 IN.
 WEIGHT - 32 OUNCES WITH KP28 + KB4D BATTERY
 POWER - 2 T.D. .049'S (STBD. ENGINE L.H. ROTATION)
 RADIO EQUIPMENT REQ'D - 2 OR 3 CHANNEL
 FLYING EXPERIENCE - INTERMEDIATE SPORT FLYER



JU-88 BOMBER

DESIGNED AND DRAWN BY JERRY L. HOLCOMB COPYRIGHT MARCH 16, 1973
 ALL RIGHTS RESERVED





THIS LINE SHOWS SHAPE OF CENTER SECTION BOTTOM 1/16" Balsa SHEETING WITH CUTOUTS FOR RETRACTS.

(TOP PLANKING OMITTED FOR CLARITY)

1/16" x 1" Balsa T.E. TOP AND BOTTOM

1/16" Balsa SHEAR WEBS (GRAIN VERTICAL)

1/16" x 1/2" Balsa CAP STRIPS

1/4" x 1/4" SPRUCE SPARS

SOFT Balsa WING TIPS

1/2" x 1" Balsa L.E. TAPERS TO 1/2" x 3/4" AT TIP

F8

F1

FOLLOW THIS LINE FOR F2 MAKE CENTER SECTION RIBS 1/32" SHORTER IF RETRACTS NOT USED

1-3/8" DIHEDRAL (EACH PANEL)

NOTE HOW SPARS ARE SCARFED. ENSURE THAT THIS IS A GOOD SOLID JOINT - IT'S ALL THAT KEEPS THE WINGS ON!

TOP AND REAR OF CANOPY FROM SOFT BLOCKS

C3 1/16" Balsa

DRILL 1/8" DIA. HOLE FOR HOLD DOWN 3/32" Balsa HATCH TOP (1 1/2" x 11-1/8")

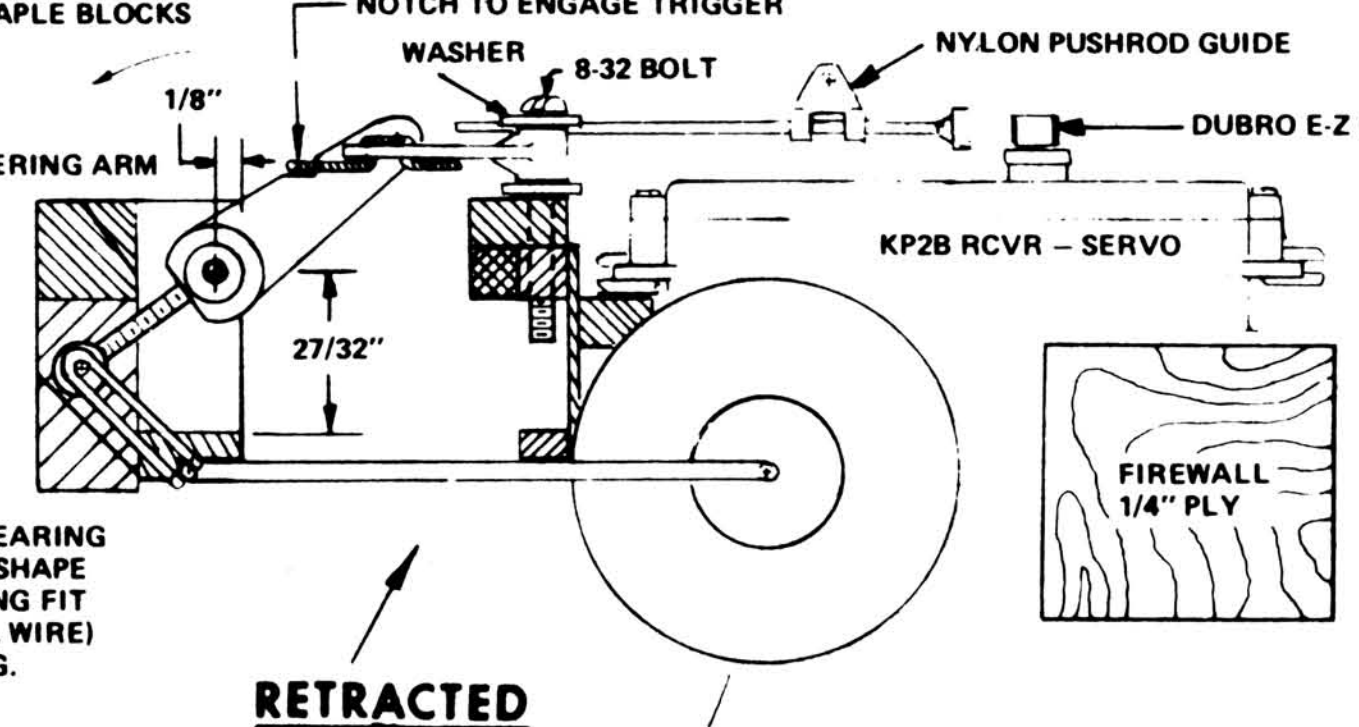
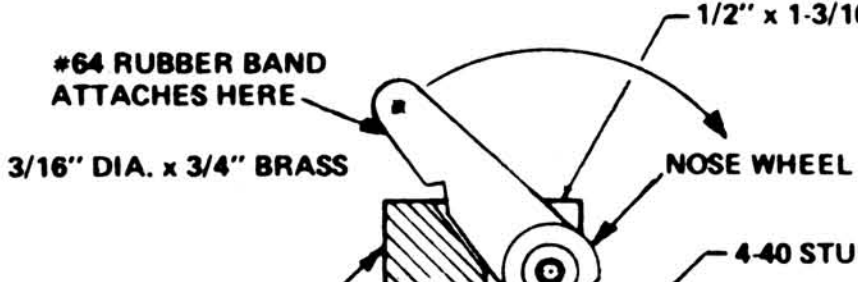
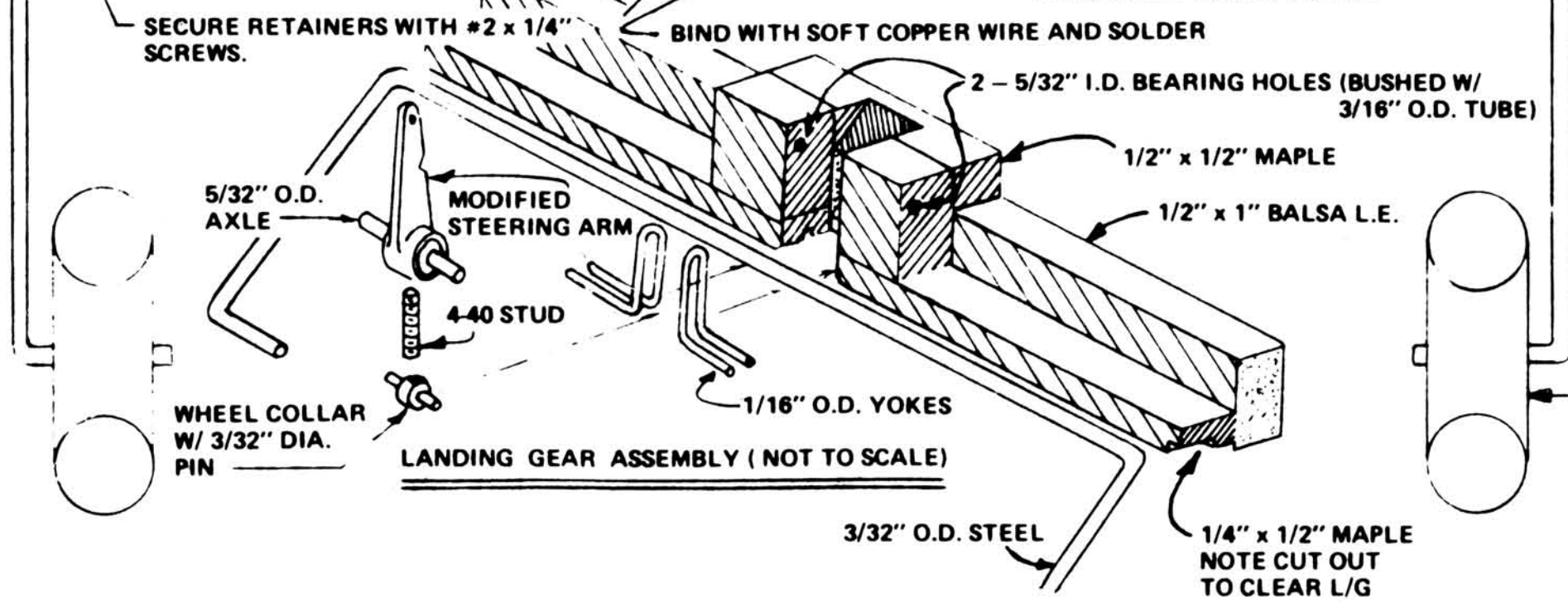
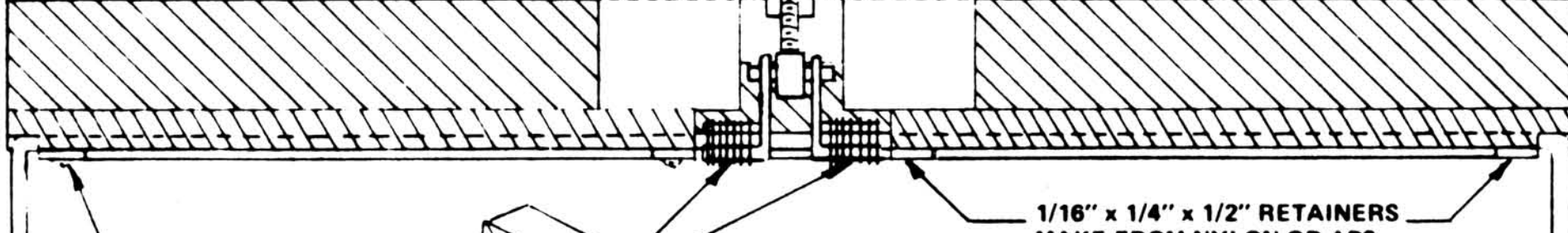
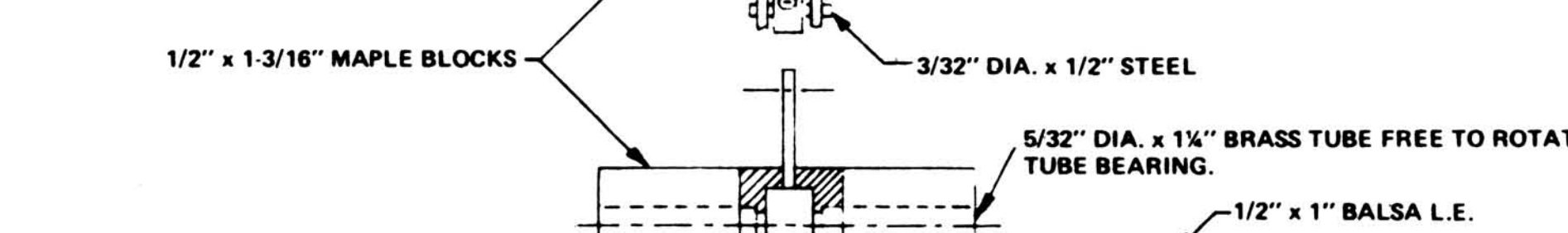
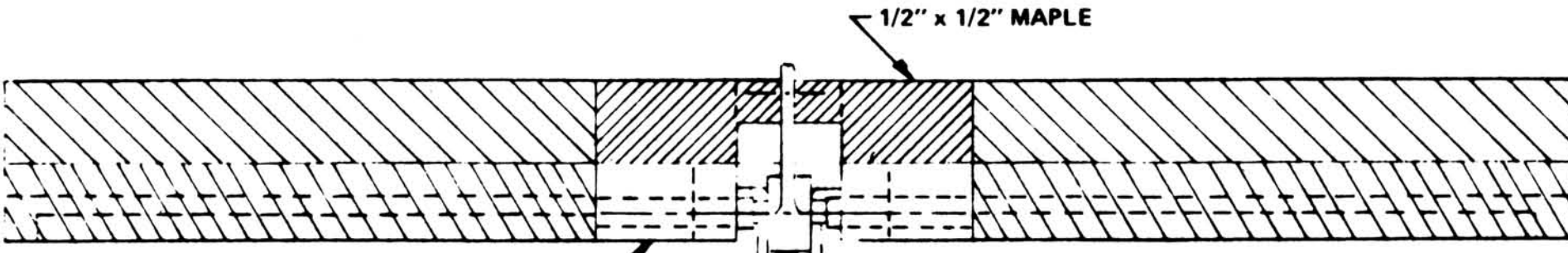
C4

C2

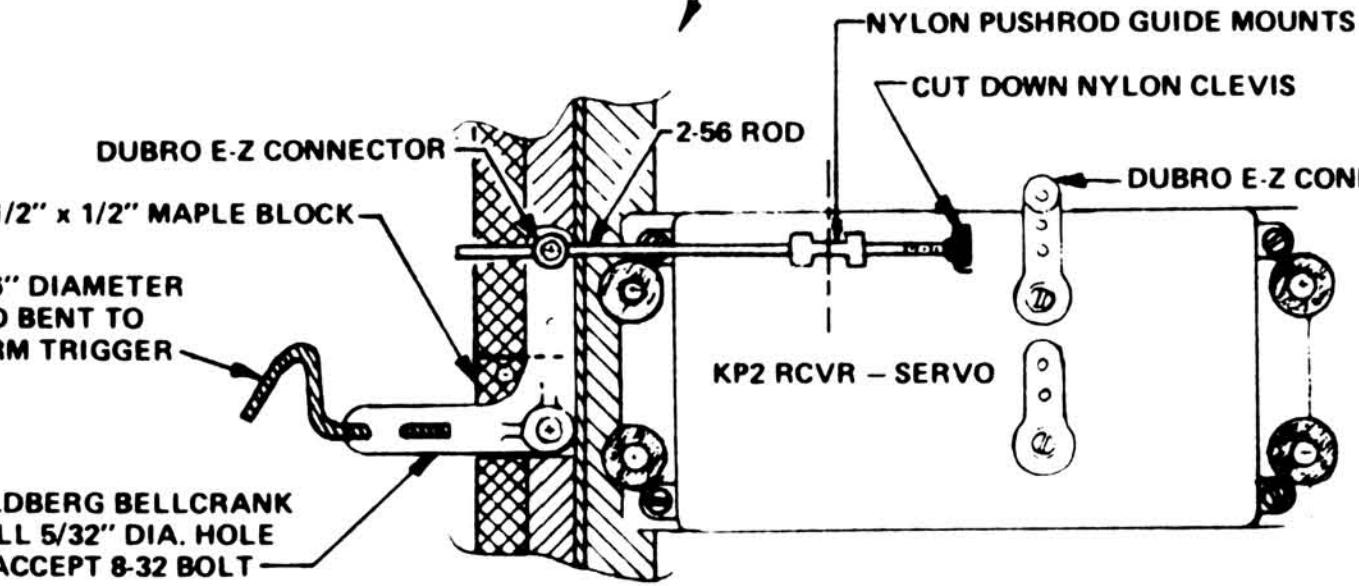
SHADED AREA IS C1 (1/32" Balsa)

1/4" x 1/4" Balsa RE-INFORCEMENTS

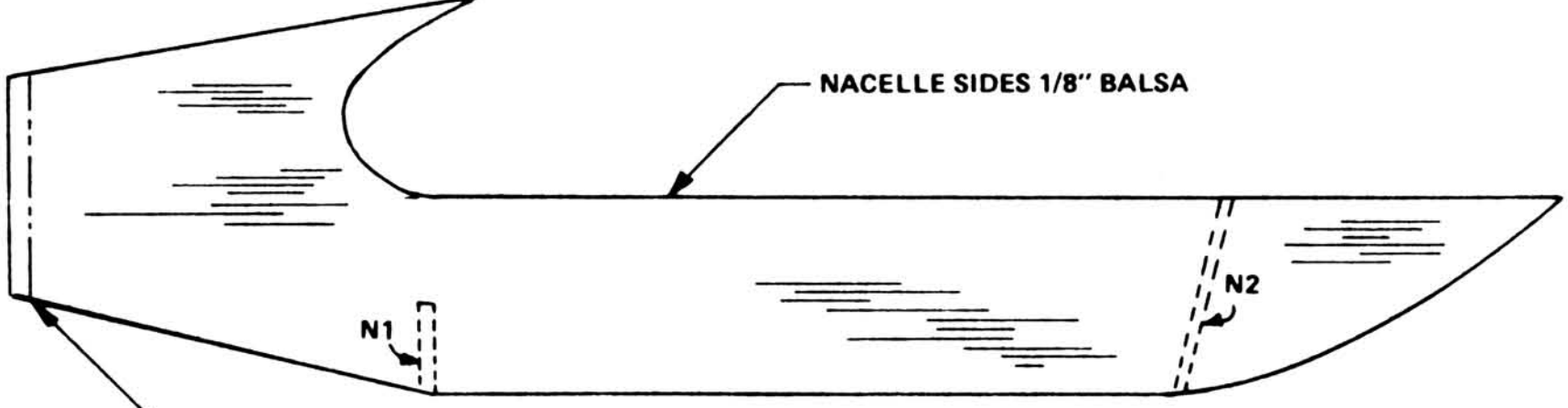
1/4" x 1/4" Balsa HATCH RAILS



RETRACTED



EXTENDED



NOTE: MAKE TWO SIDES 1/8" SHORTER TO PROVIDE SIDE THRUST

WING SPAN - 46 IN. WING AREA - 290 SQ. IN.
 LENGTH - 32-1/2 IN.
 WEIGHT - 32 OUNCES WITH KP2B + KB4D BATTERY
 POWER - 2 T.D. .048's (STBD. ENGINE L.H. ROTATION)
 RADIO EQUIPMENT REQ'D - 2 OR 3 CHANNEL
 FLYING EXPERIENCE - INTERMEDIATE SPORT FLYER



JU-88 BOMBER

DESIGNED AND DRAWN BY JERRY L. HOLCOMB

COPYRIGHT MARCH 16, 1973
 ALL RIGHTS RESERVED

