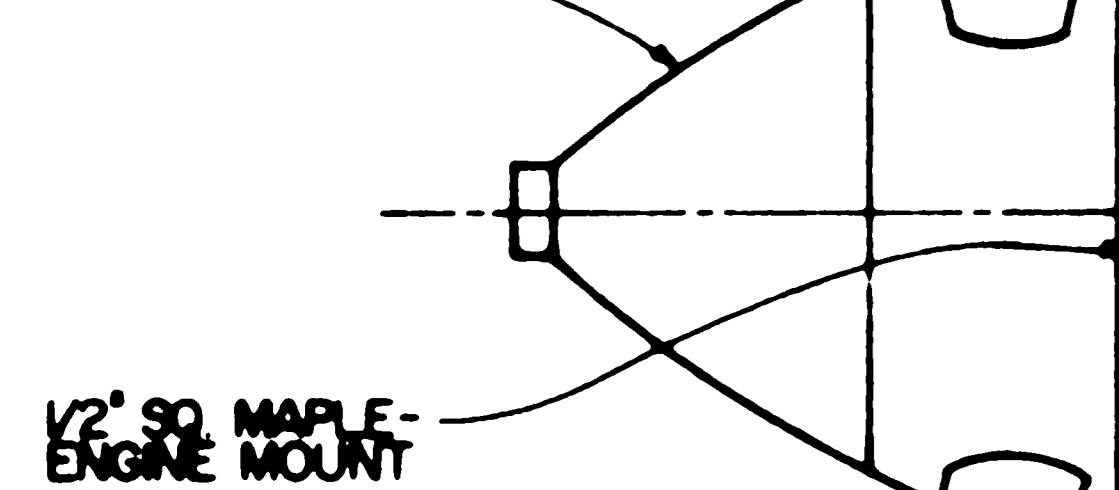
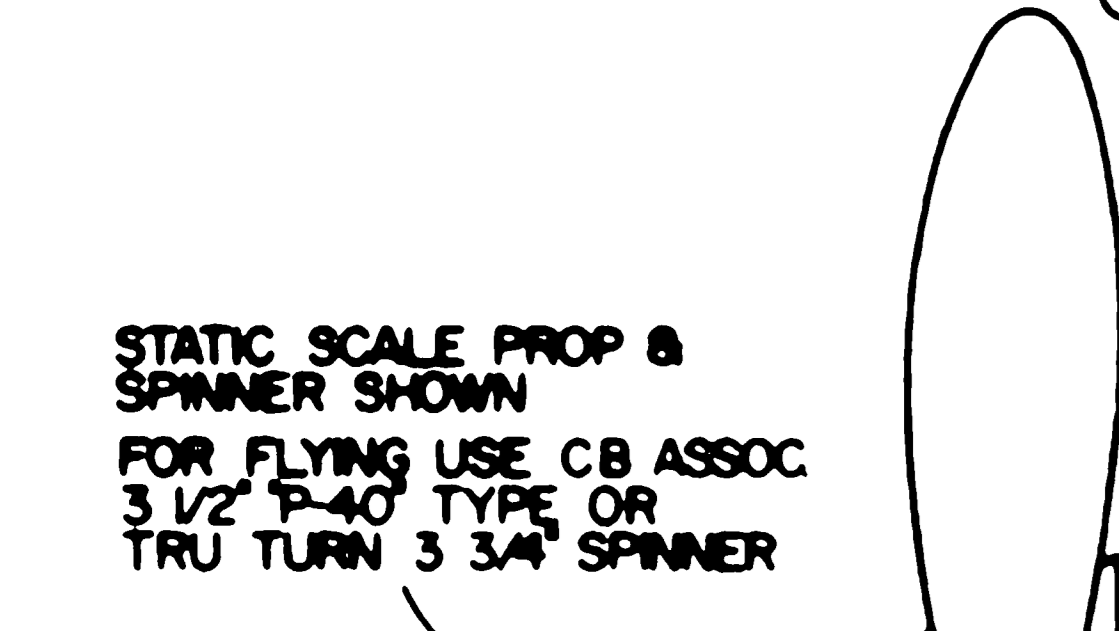
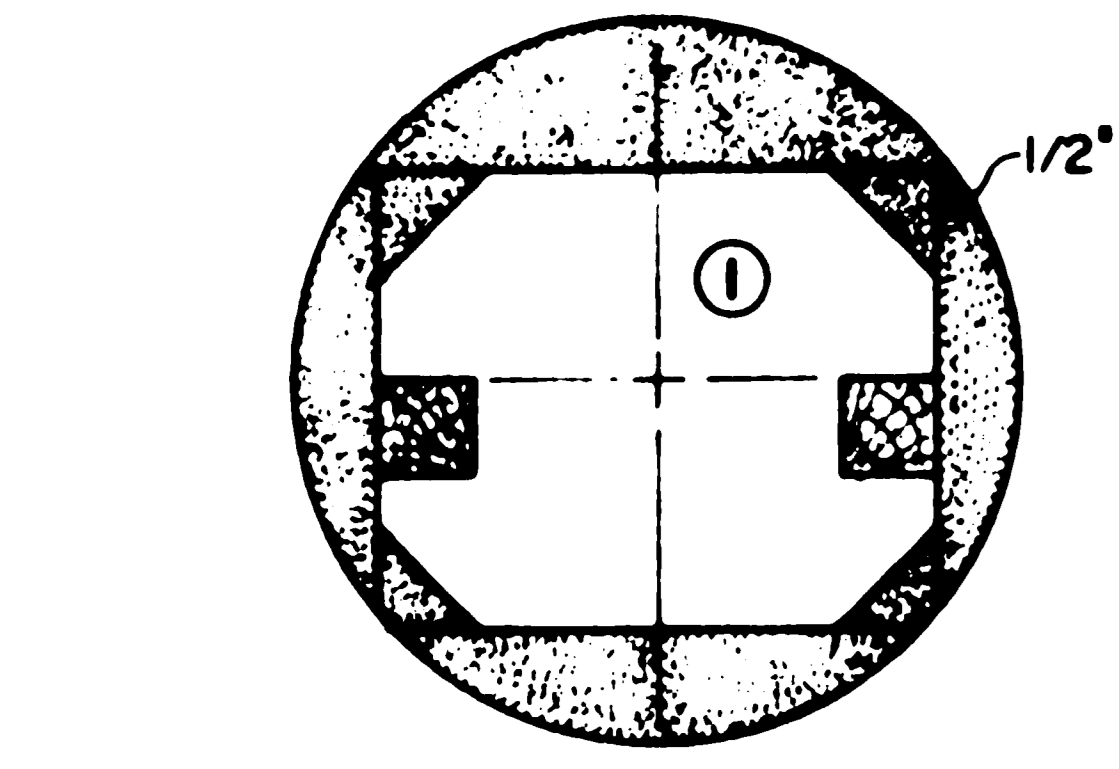
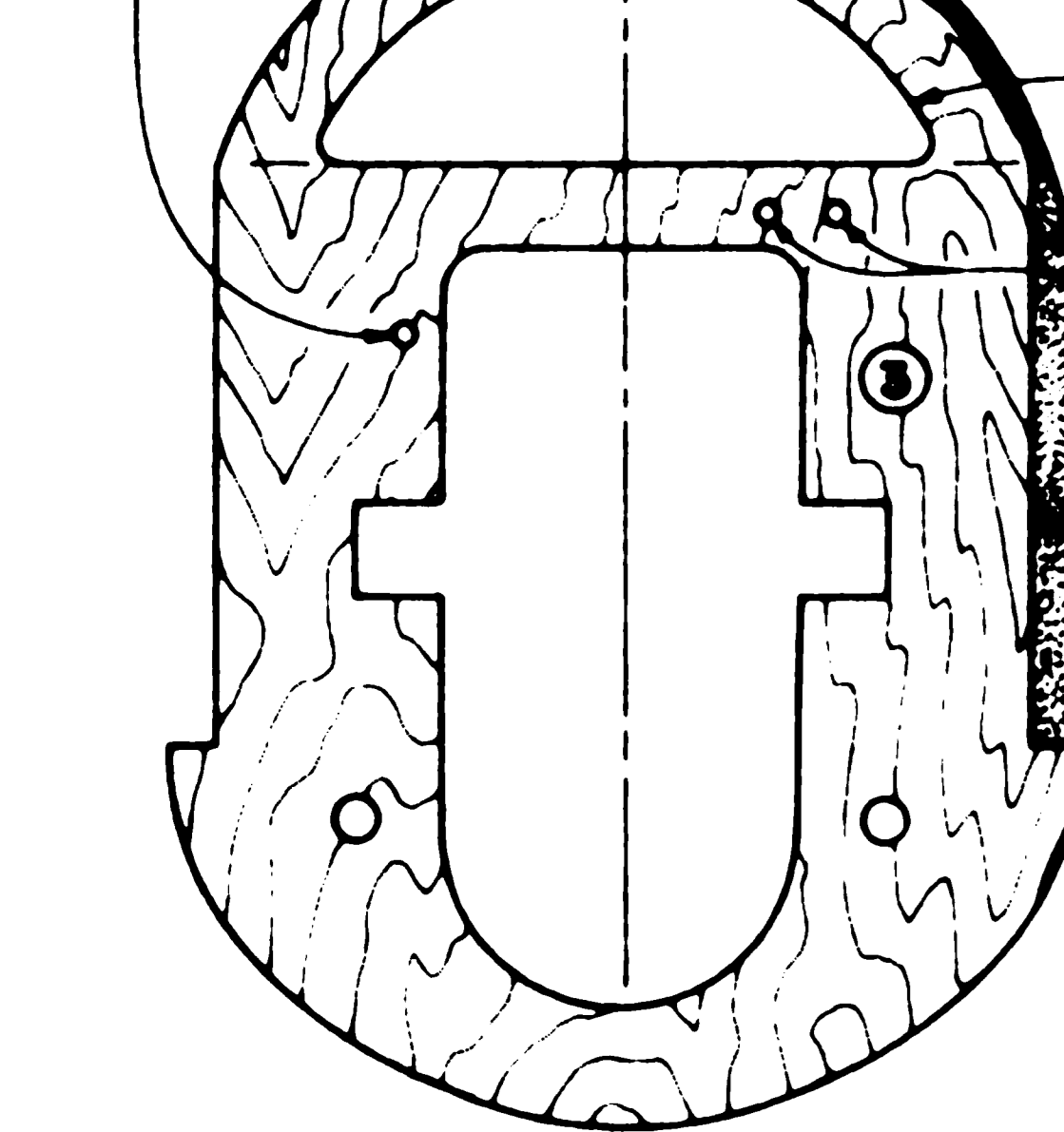


OS 108 (2 CYCLE) ENGINE SHOWN USE TANK PRESSURE OR PUMP

RIGHT THRUST

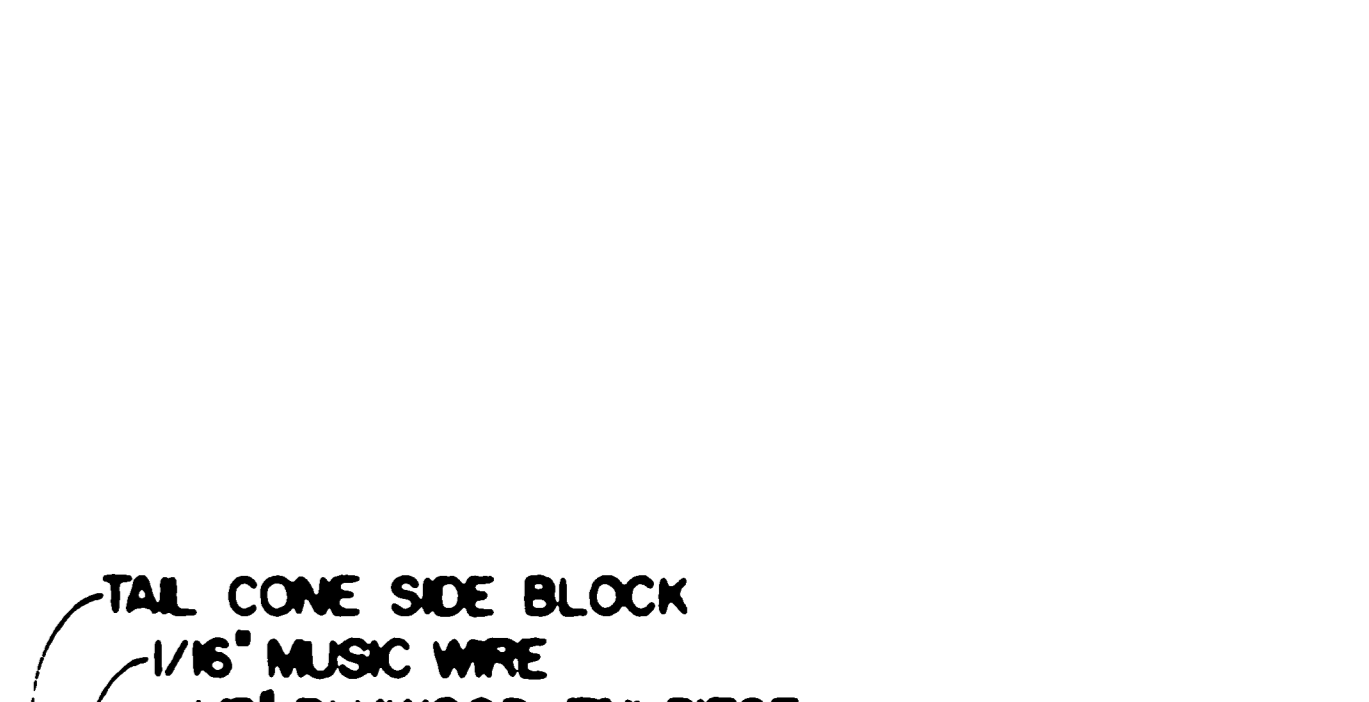
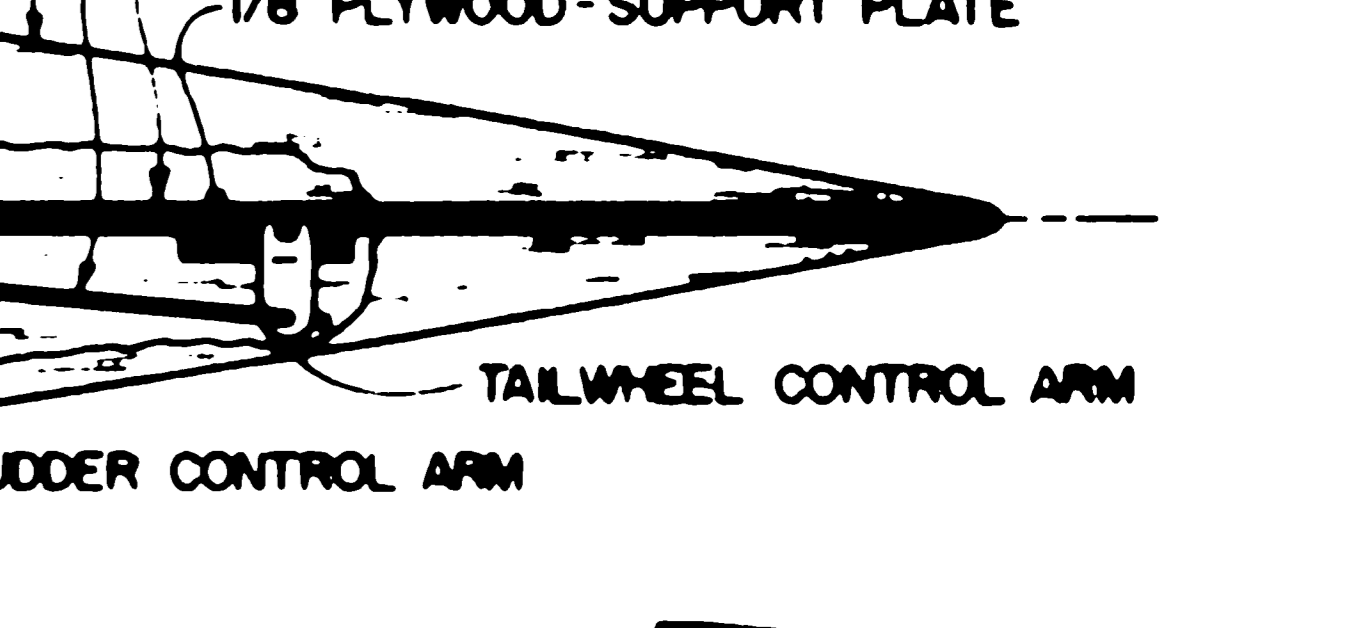
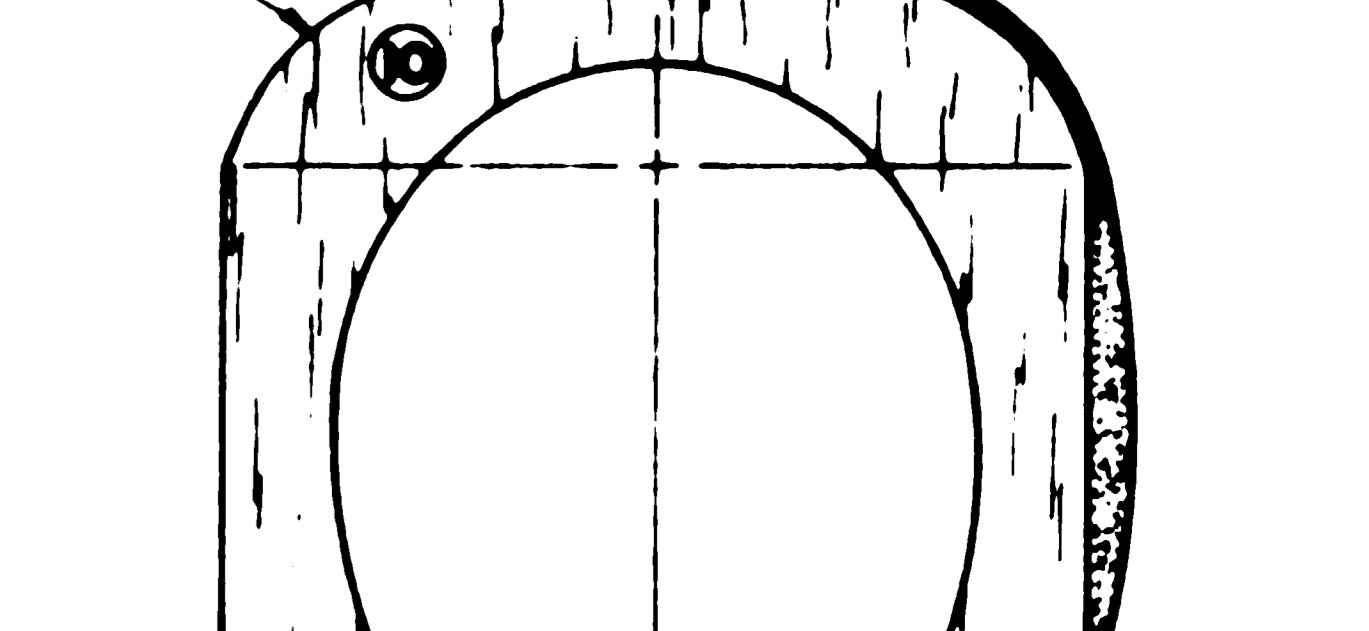
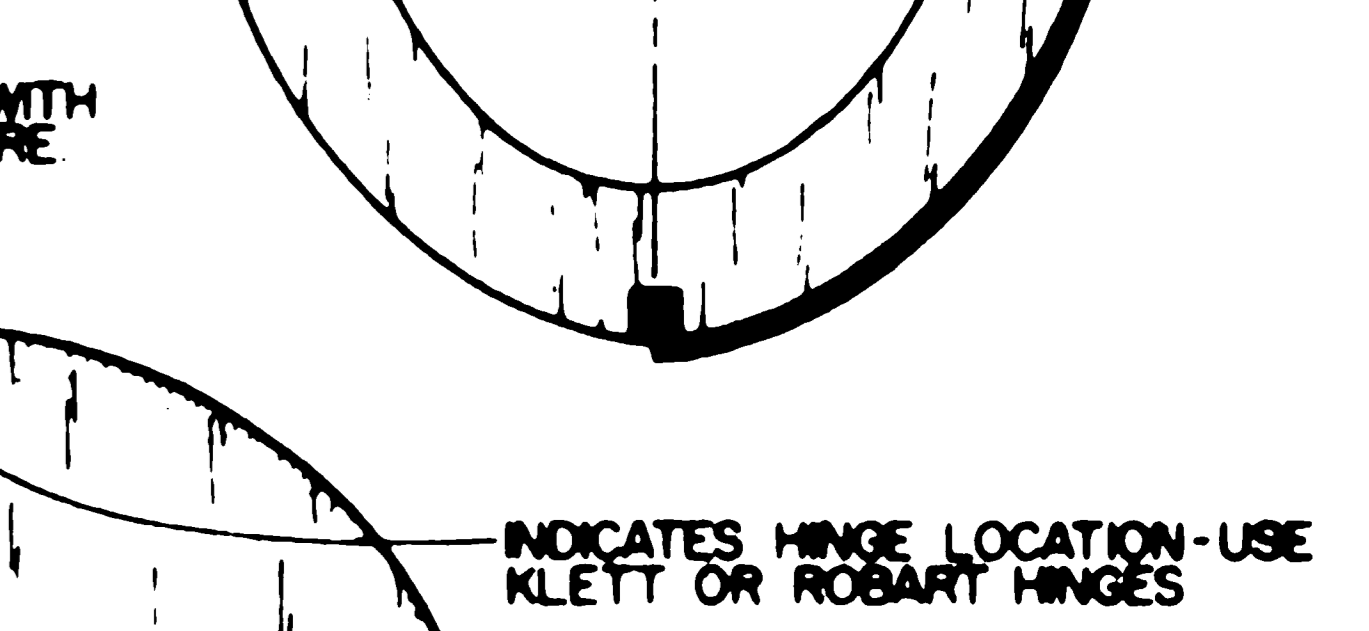
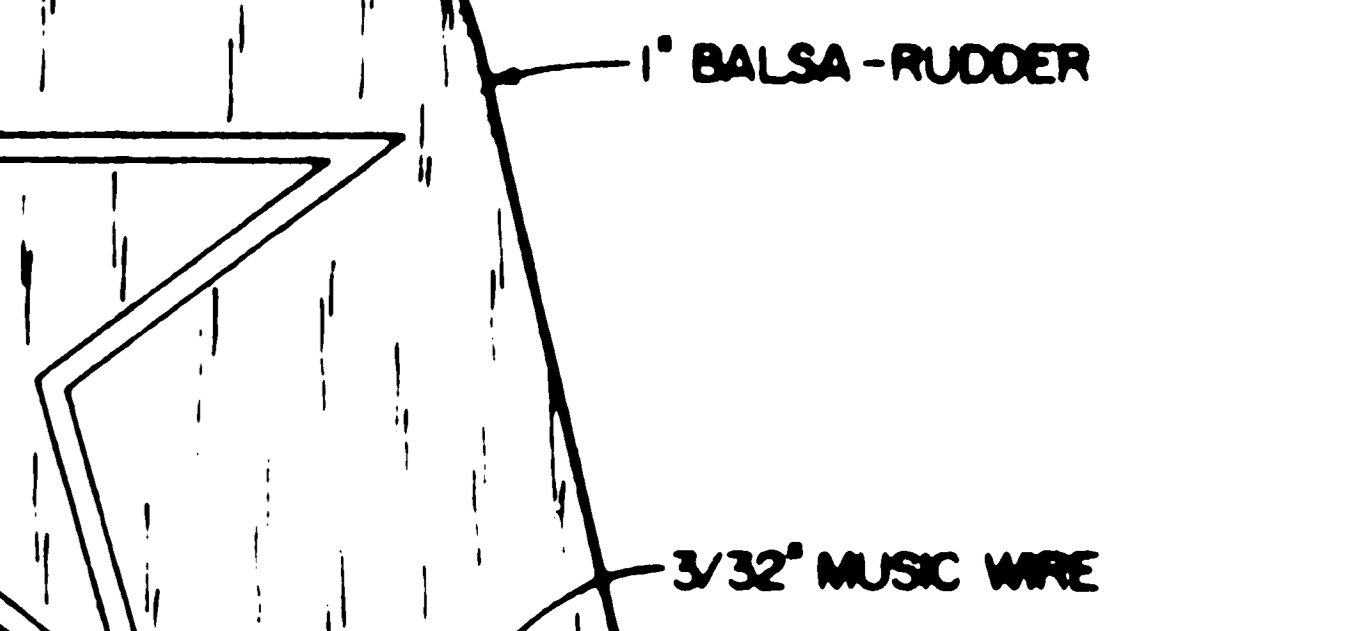
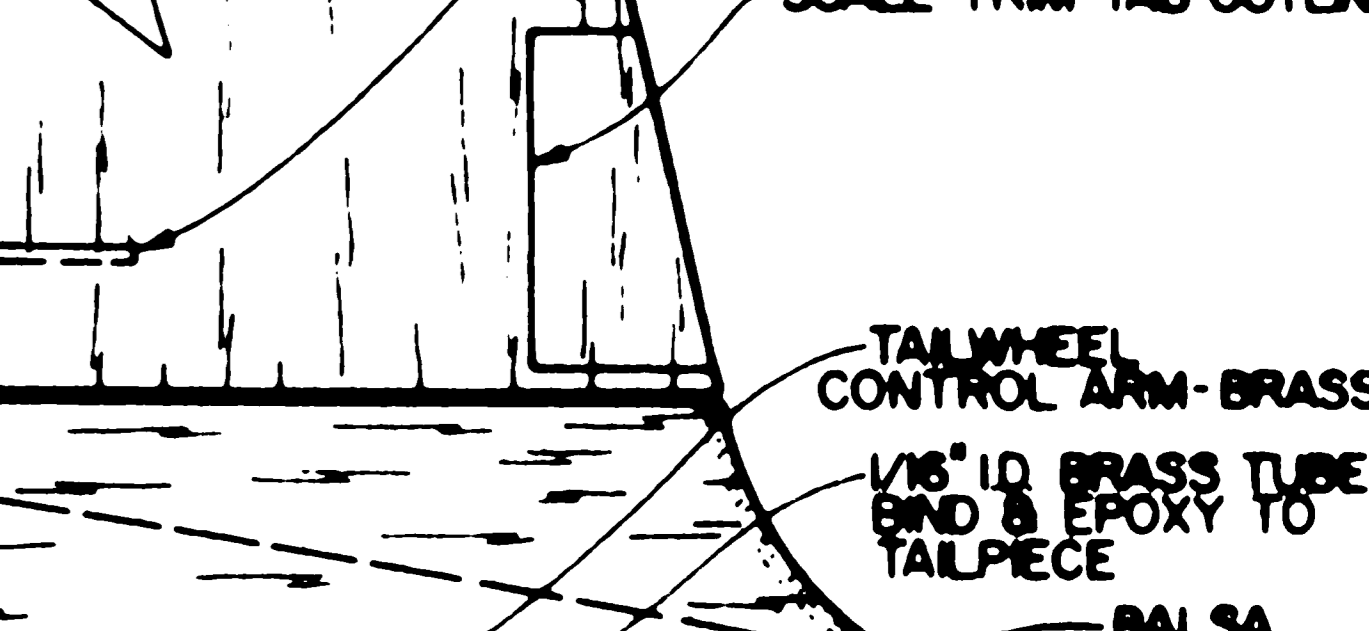
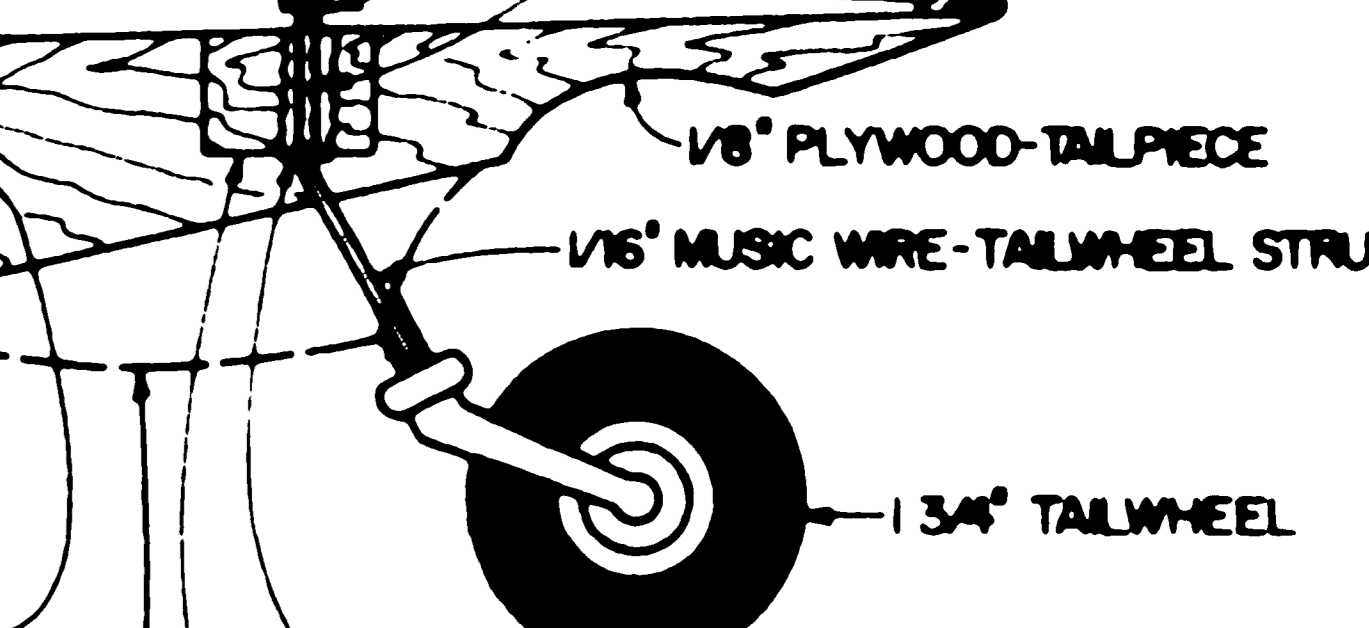
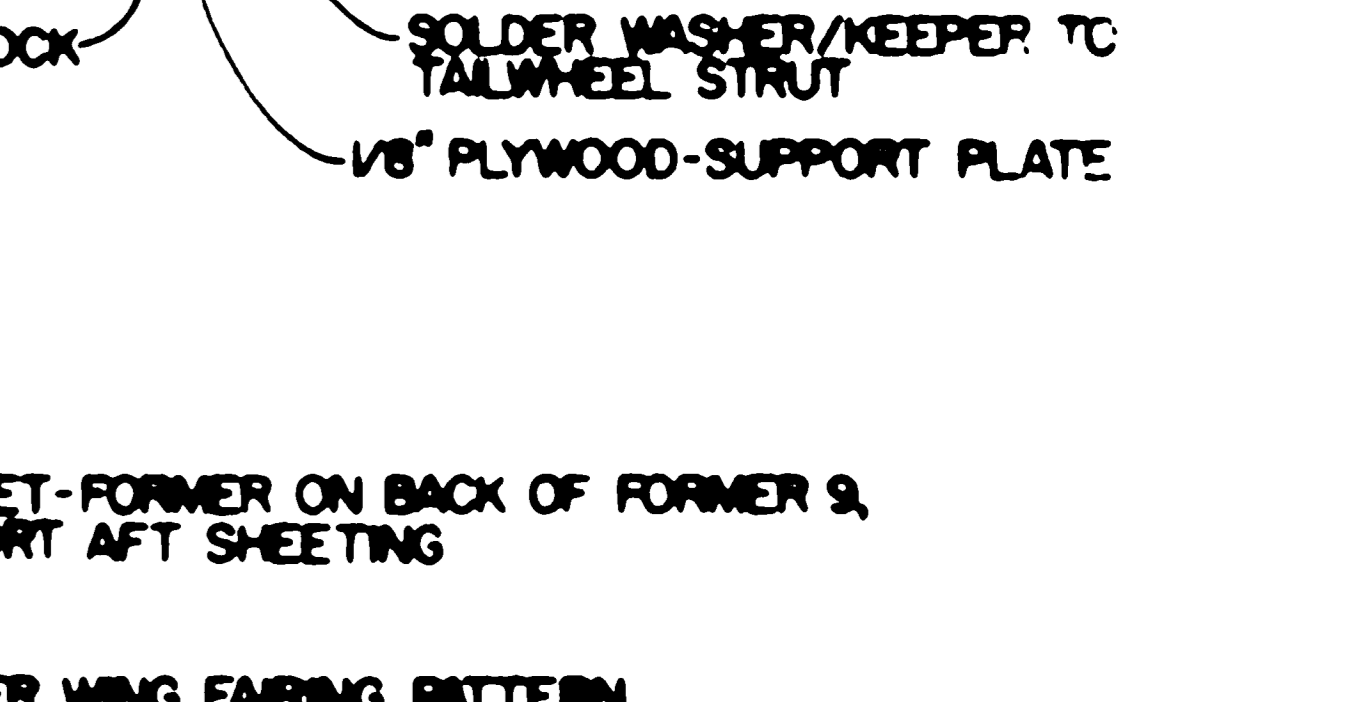
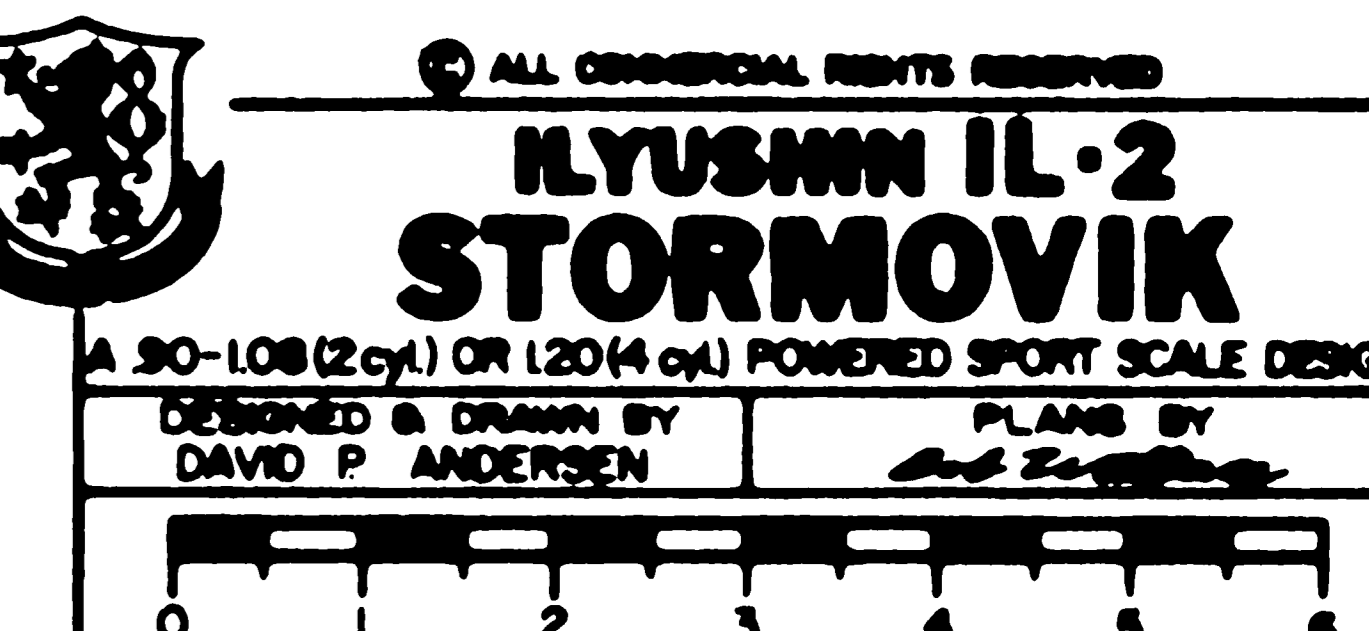


**\*FUSELAGE INSCRIPTION**  
 WHEN THE COMMANDER OF THE 257th ASSAULT REGIMENT WAS KILLED IN ACTION, HIS SEVEN YEAR OLD DAUGHTER, LENOCHKA, WROTE A LETTER TO GENERAL STALIN, SHE INCLUDED A FEW RUBLES THAT SHE HAD SAVED AND SHE ASKED STALIN TO USE THE MONEY TO REPLACE HER FATHER'S AIRPLANE. SHORTLY THEREAFTER, AN ALL WHITE STORMOVIK APPEARED AT HER FATHER'S REGIMENT. ON ITS SIDE WAS INSCRIBED "FROM LENOCHKA, FOR PAPA"

ROBART 4" SCALE WHEELS (SAND OFF LETTERING AND REMOVE GLOSSY SURFACE. MAKE HUB FROM LITHOPLATE, POLISHED WITH NO. 600 SANDPAPER. GLUE TO ROBART HUB WITH WILHOLD RC-56 ADHESIVE)

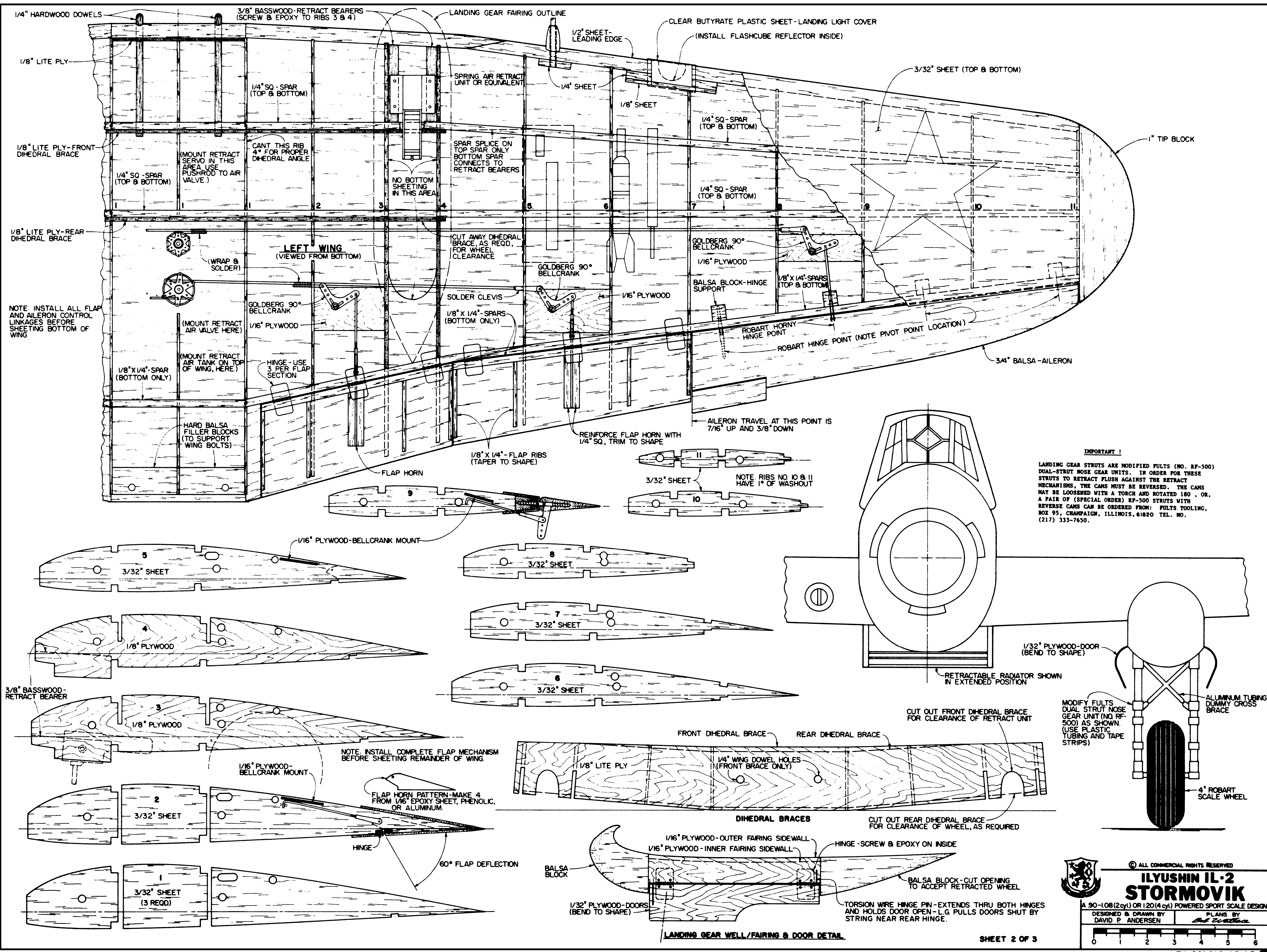
ALL COMMERCIAL RIGHTS RESERVED  
**ILYUSHIN IL-2 STORMOVIK**  
 A 90-108 (2 cy) OR 12014 (4 cy) POWERED SPORT SCALE DESIGN  
 DESIGNED & DRAWN BY DAVID P. ANDERSEN  
 PLANS BY *David Andersen*

NOTE: ALL WOOD IS BALSAL, UNLESS NOTED OTHERWISE.

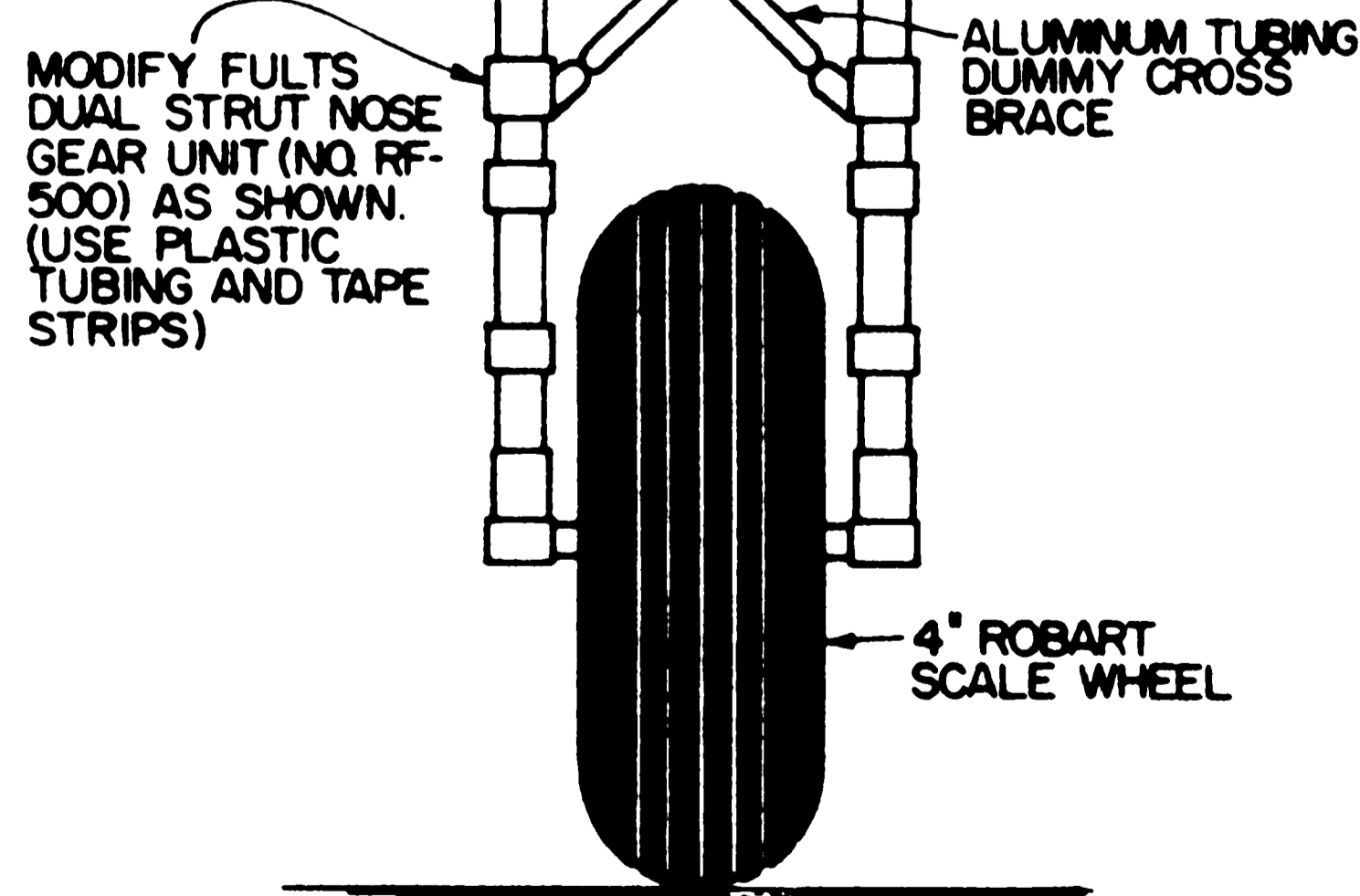


**\*FUSELAGE INSCRIPTION**  
 WHEN THE COMMANDER OF THE 257th ASSAULT REGIMENT WAS KILLED IN ACTION, HIS SEVEN YEAR OLD DAUGHTER, LENOCHKA, WROTE A LETTER TO GENERAL STALIN, SHE INCLUDED A FEW RUBLES THAT SHE HAD SAVED AND SHE ASKED STALIN TO USE THE MONEY TO REPLACE HER FATHER'S AIRPLANE. SHORTLY THEREAFTER, AN ALL WHITE STORMOVIK APPEARED AT HER FATHER'S REGIMENT. ON ITS SIDE WAS INSCRIBED "FROM LENOCHKA, FOR PAPA"

ROBART 4" SCALE WHEELS (SAND OFF LETTERING AND REMOVE GLOSSY SURFACE. MAKE HUB FROM LITHOPLATE, POLISHED WITH NO. 600 SANDPAPER. GLUE TO ROBART HUB WITH WILHOLD RC-56 ADHESIVE)



**IMPORTANT!**  
 LANDING GEAR STRUTS ARE MODIFIED FULTS (NO. RF-500) DUAL-STRUT NOSE GEAR UNITS. IN ORDER FOR THESE STRUTS TO RETRACT FLUSH AGAINST THE RETRACT MECHANISMS, THE CAMS MUST BE REVERSED. THE CAMS MAY BE LOOSENED WITH A TORCH AND ROTATED 180°, OR, A PAIR OF (SPECIAL ORDER) RF-500 STRUTS WITH REVERSE CAMS CAN BE ORDERED FROM: FULTS TOOLING, BOX 95, CHAMPAIGN, ILLINOIS, 61820 TEL. NO. (217) 333-7650.



© ALL COMMERCIAL RIGHTS RESERVED

**ILYUSHIN IL-2 STORMOVIK**

A 90-1.08 (2cyt) OR 1.20 (4cyt) POWERED SPORT SCALE DESIGN

DESIGNED & DRAWN BY DAVID P. ANDERSEN

PLANS BY *Al Zappa*

0 1 2 3 4 5 6

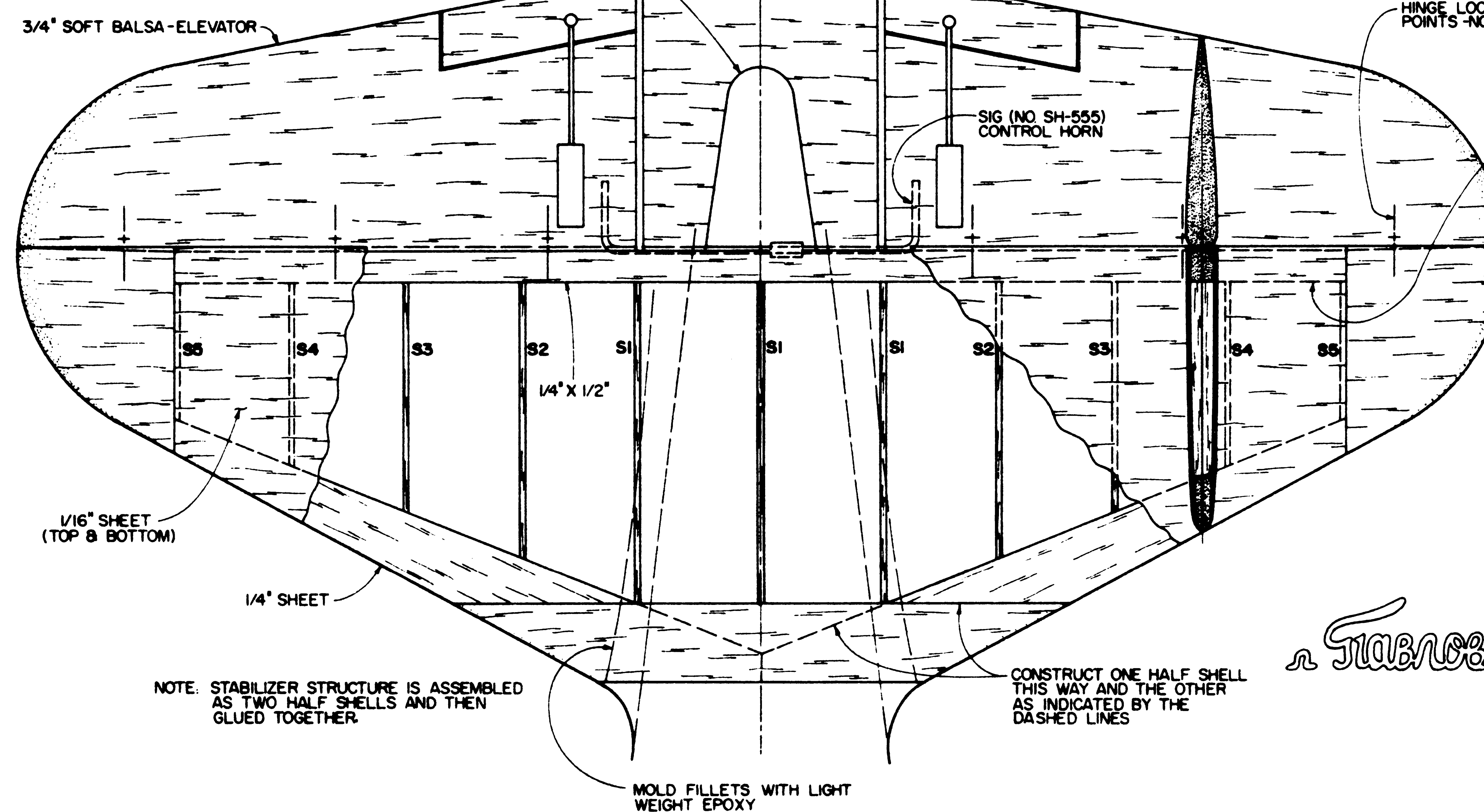
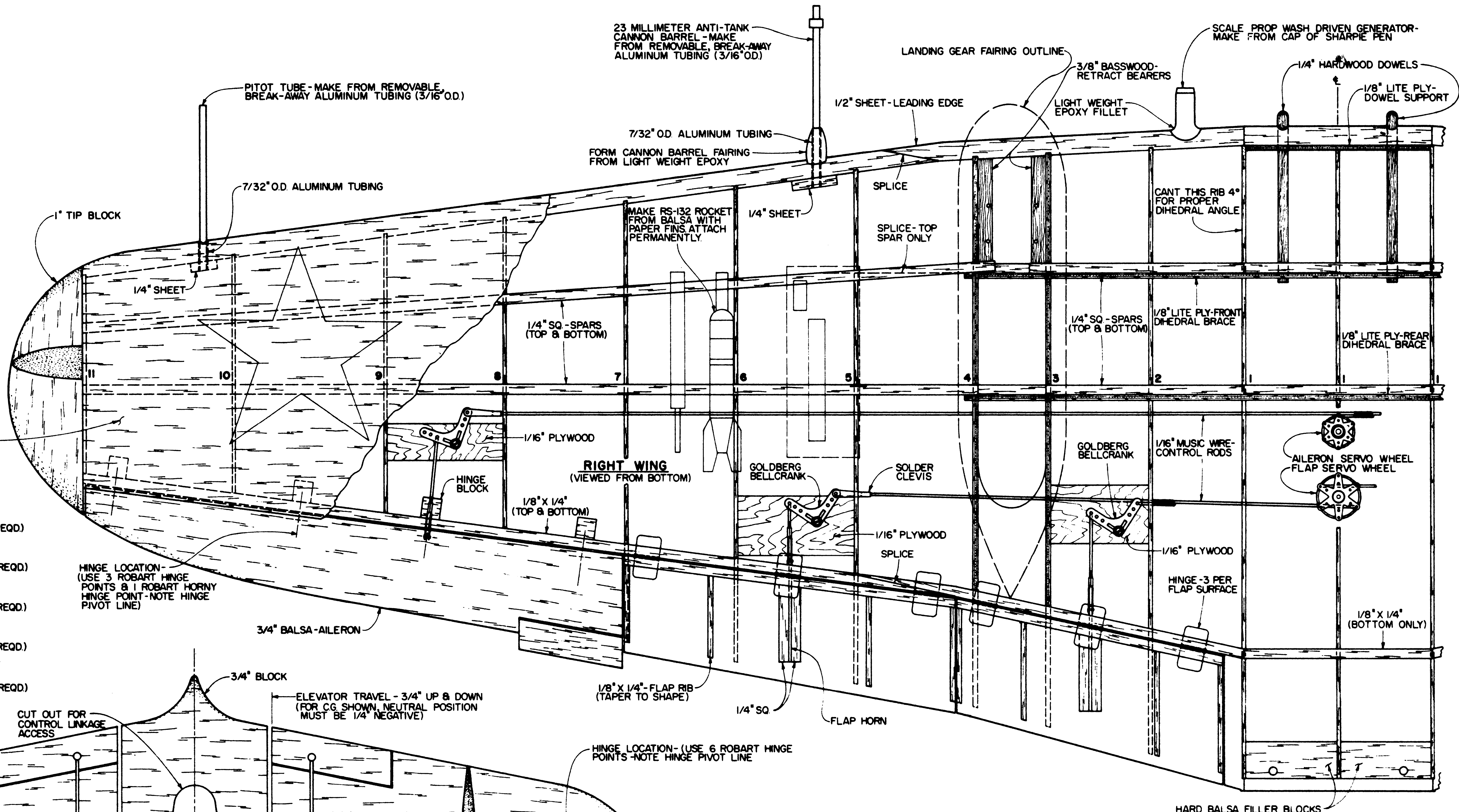
PLAN NO. 1042

**MATERIALS LIST**

All material is 4-6 lb balsa unless otherwise specified

- (3) 1/16 x 3 x 36
- (2) 1/4 x 3 x 48
- (15) 3/32 x 3 x 36
- (2) 3/4 x 3 x 36
- (3) 1/8 x 3 x 36
- (1) 1/4 x 1/2 x 36
- (1) 1/2 x 1/2 x 36 triang-medium
- (1) 1 x 3 x 36
- (2) 2 x 3 x 12
- (2) 3/4 x 3 x 24
- (2) 1 x 1/4 x 36
- (8) 3/8 x 3/8 x 36 medium
- (6) 1/4 x 1/4 x 36 medium
- (1) 18 x 12 x 1/32 ply
- (1) 24 x 12 x 1/8 ply
- (1) 24 x 12 x 1/8 Siglite ply

- Misc soft balsa blocks:
- (1) 1/4 x 36 hardwood dowel
  - (3) 1/2 x 1/2 x 12 maple
  - (1) carbon-fiber pushrod
  - (3) 1/16 music wire
  - (1) 1/8 music wire
  - (2) 18 x 12 Sig cellulose-acetate butyrate sheet
  - (1) 3 x 6 lithoplate (thin aluminum) sheet



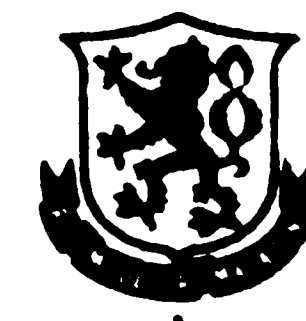
**SCALE REFERENCE SOURCES**

- \* (PLAN NO. 2906 FROM AEROMODELER 1970) REPLA-TECH INTERNATIONAL 48506 MCKENZIE HIGHWAY VIDA, OREGON 97488
- \* (PROFILE AIRCRAFT NO. 88) PROFILE BOOKS LTD.
- \* (AIRCRAFT NO. 194- SAME AS AEROMODELER PLAN NO. 2906) MODEL & ALLIED PUBLICATIONS 13/35 BRIDGE STREET HENRI HENPSTAD, HERTS, ENGLAND
- ALSO AVAILABLE FROM: BOB HOLMAN PLANS BOX 741 SAN BERNARDINO, CALIFORNIA 92402
- \* (RUSSIAN AIRCRAFT SINCE 1940) BY JEAN ALEXANDER, PUTNAM, LONDON- 1975
- \* (PHOTO 7576, DISC 18) SMITHSONIAN INSTITUTION OFFICE OF PRINTING AND PHOTO SERVICES SERVICES BRANCH WASHINGTON, D.C. 20560

Зенары Зепноцеземорозо цезеза  
 а Ставлозы он мурдаманна  
 а Кымаранн.

FUSELAGE INSCRIPTION:  
 "TO OUR FELLOW CITIZEN, HERO OF THE SOVIET UNION  
 LIEUTENANT PAVLOV, FROM THE WORKERS OF KUSTAMAI."  
 6TH ASSAULT REGIMENT, BALTIC COAST.  
 FEBRUARY 1945

FOR LOCATION SEE PROFILE PUBLICATION NO. 88



© ALL COMMERCIAL RIGHTS RESERVED  
**ILYUSHIN IL-2**  
**STORMOVIK**

A 90-108(2cy) OR 120(4cy) POWERED SPORT SCALE DESIGN  
 DESIGNED & DRAWN BY DAVID P. ANDERSEN  
 PLANS BY *David Andersen*

