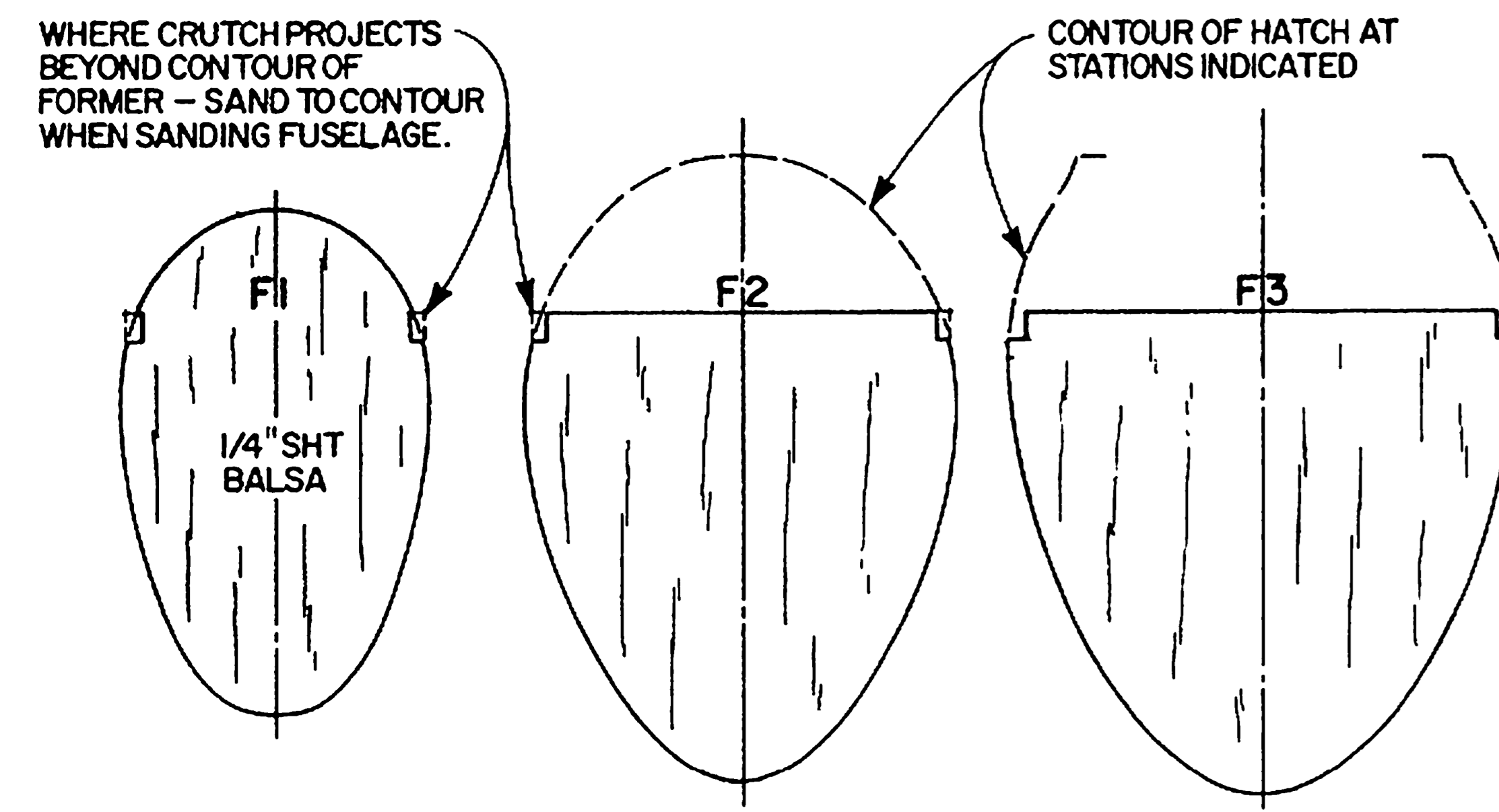
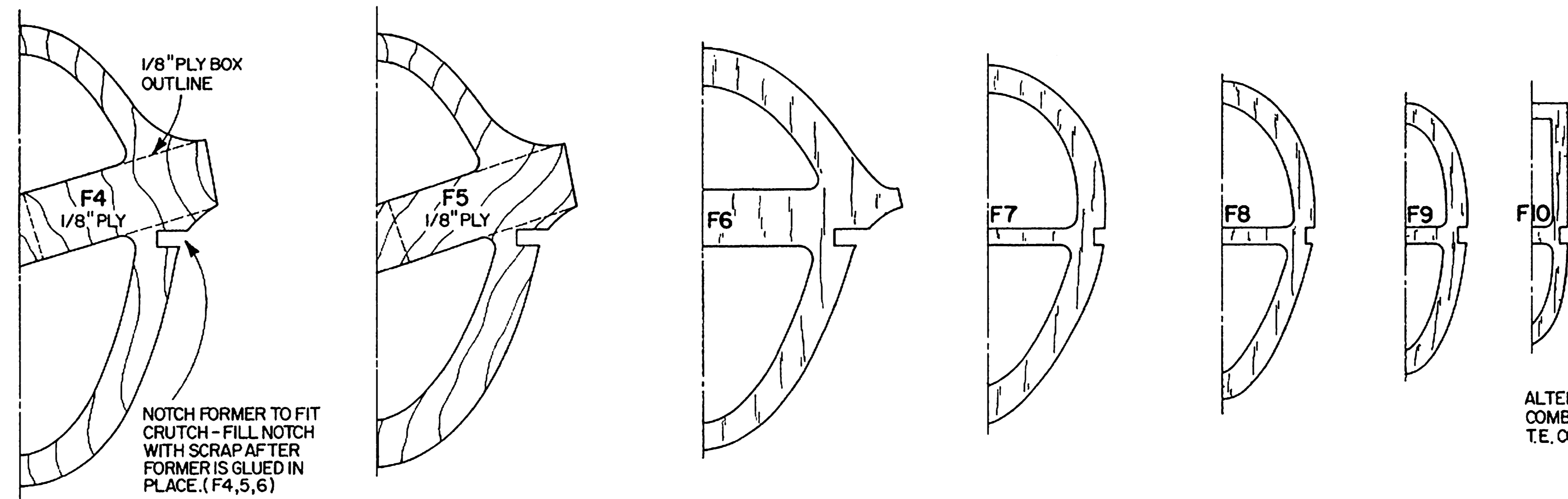


NOTE: UNLESS OTHERWISE SPECIFIED ALL FORMERS ARE 1/8" SHT Balsa. ALL FORMERS ARE SHOWN AT MAX. DIMENSIONS - SAND TO SHAPE IN PLACE IF FOAM CONSTRUCTION IS FOLLOWED. ALSO BEFORE FUSELAGE IS PLANKED IF YOU DESIRE ON THAT CONSTRUCTION METHOD. IF YOU PLANK REDUCE FORMERS PERIPHERALLY AN AMOUNT EQUAL TO THICKNESS OF THE PLANKING BEFORE STARTING THE FUSELAGE ASSEMBLY.

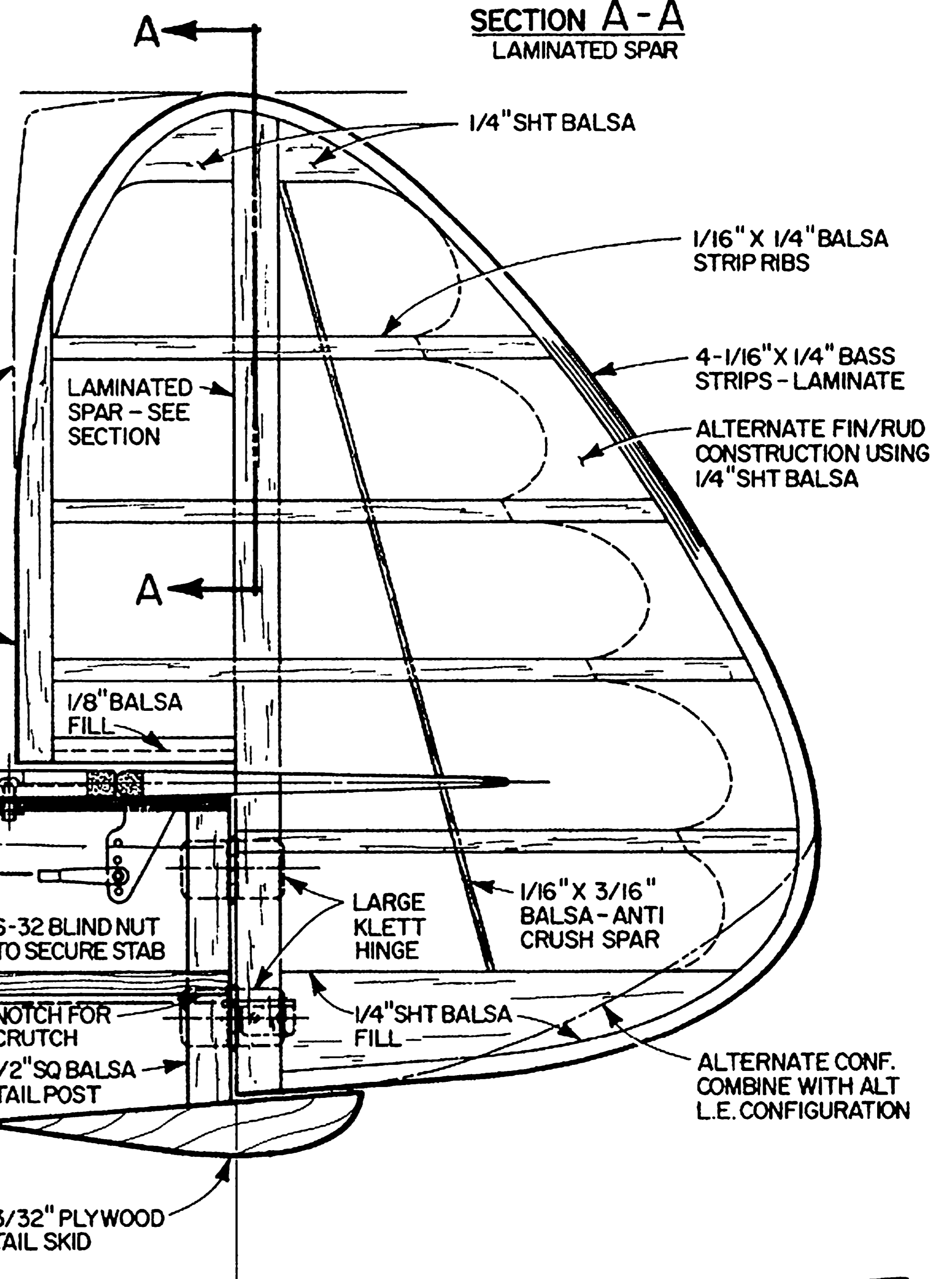


WHERE CRUTCH PROJECTS BEYOND CONTOUR OF FORMER - SAND TO CONTOUR WHEN SANDING FUSELAGE.

CONTOUR OF HATCH AT STATIONS INDICATED

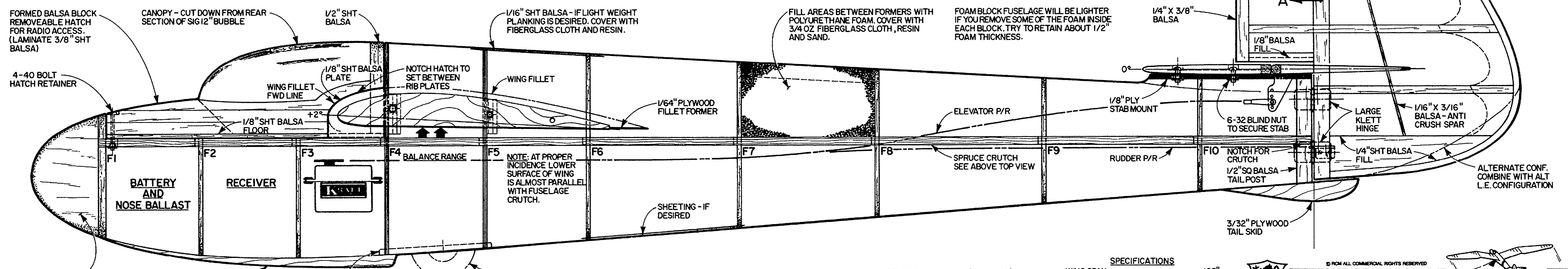


NOTCH FORMER TO FIT CRUTCH - FILL NOTCH WITH SCRAP AFTER FORMER IS GLUED IN PLACE. (F4,5,6)



ALTERNATE CONF. COMBINE WITH ALT. T.E. CONFIGURATION

ALTERNATE CONF. COMBINE WITH ALT. L.E. CONFIGURATION



FORMED Balsa BLOCK REMOVEABLE HATCH FOR RADIO ACCESS. (LAMINATE 3/8" SHT Balsa)

CANOPY - CUT DOWN FROM REAR SECTION OF SIG 12" BUBBLE

1/2" SHT Balsa

1/16" SHT Balsa - IF LIGHT WEIGHT PLANKING IS DESIRED. COVER WITH FIBERGLASS CLOTH AND RESIN.

FILL AREAS BETWEEN FORMERS WITH POLYURETHANE FOAM. COVER WITH 3/4 OZ FIBERGLASS CLOTH, RESIN AND SAND.

FOAM BLOCK FUSELAGE WILL BE LIGHTER IF YOU REMOVE SOME OF THE FOAM INSIDE EACH BLOCK. TRY TO RETAIN ABOUT 1/2" FOAM THICKNESS.

4-40 BOLT HATCH RETAINER

WING FILLET FWD LINE

1/8" SHT Balsa PLATE

NOTCH HATCH TO SET BETWEEN RIB PLATES

WING FILLET

1/64" PLYWOOD FILLET FORMER

ELEVATOR P/R

1/8" PLY STAB MOUNT

6-32 BLIND NUT TO SECURE STAB

LARGE KLETT HINGE

1/16" x 3/16" Balsa - ANTI CRUSH SPAR

Balsa NOSE BLOCK LAMINATE 3/8" SHT Balsa - GRAIN FORE AND AFT.

1/8" SPRUCE OR PLY SCALE SKID

AIR TRONICS ADJUSTABLE TOW HOOK - INSET AND EPOXY IN PLACE. (TRIM SKID IF NECESSARY)

SCALE LANDING WHEEL ON SOME MINIMOAS. MAY BE USED ON MODEL TO HIDE TOW HOOK. (1/2" WHEEL - Balsa)

NOTE: FIT NYRODS TO FUSELAGE AFTER FIRST (FORWARD) THREE BAYS ARE FILLED WITH FOAM AND RADIO IS INSTALLED. RUN RUDDER AND ELEVATOR PUSH RODS THRU FORMERS. NOTCH FOAM TO CLEAR OUTER NYROD - WHICH IS GLUED TO EACH INTERVENING FORMER

SPECIFICATIONS

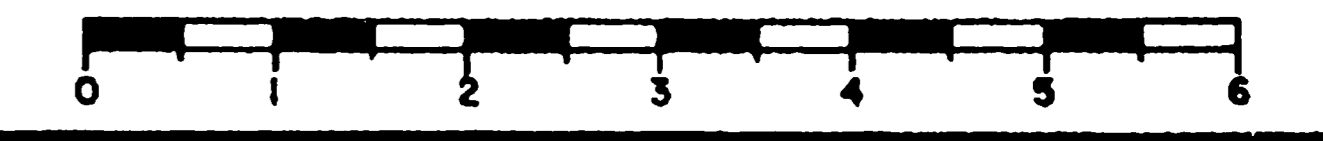
WING SPAN	105"
WING AREA	750 SQ IN
AIRFOIL	SCALE GOETTINGEN 396
WEIGHT, READ-TO-FLY	54 OZ
WING LOADING	10.4 OZ/SQ FT
RADIO - NO OF CHANNELS	3
RUDDER ELE. AND SPOILERS	(4 IF CONTROL-ABLE TOW HOOK IS USED)



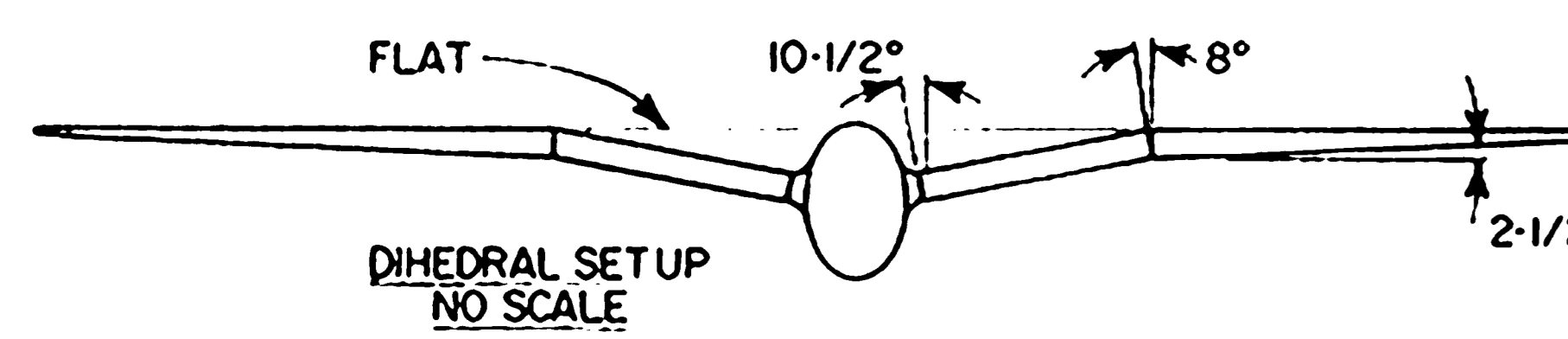
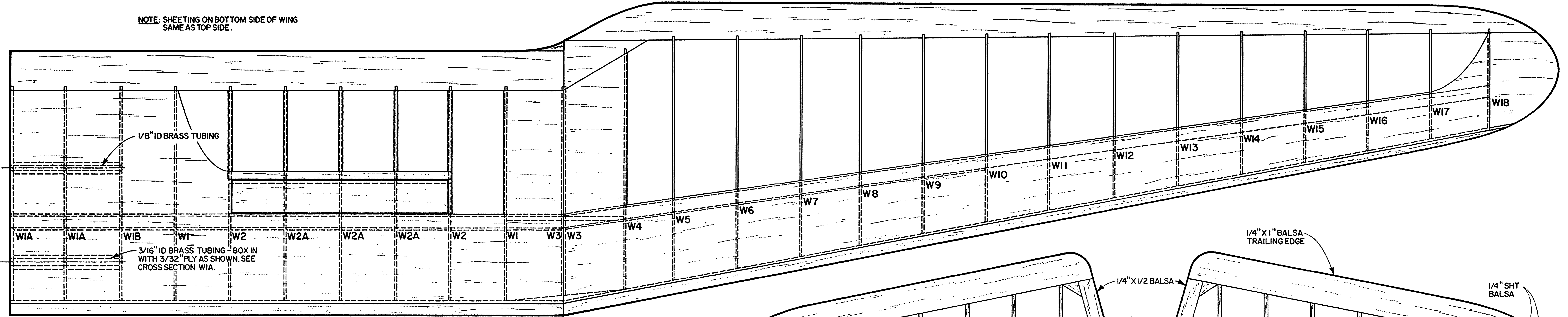
HIRTH MINIMO A
A SCALE RC SAILPLANE

DESIGNED & DRAWN BY COL. JOHN A. de VRIES / PLANS BY JERRY SMITH

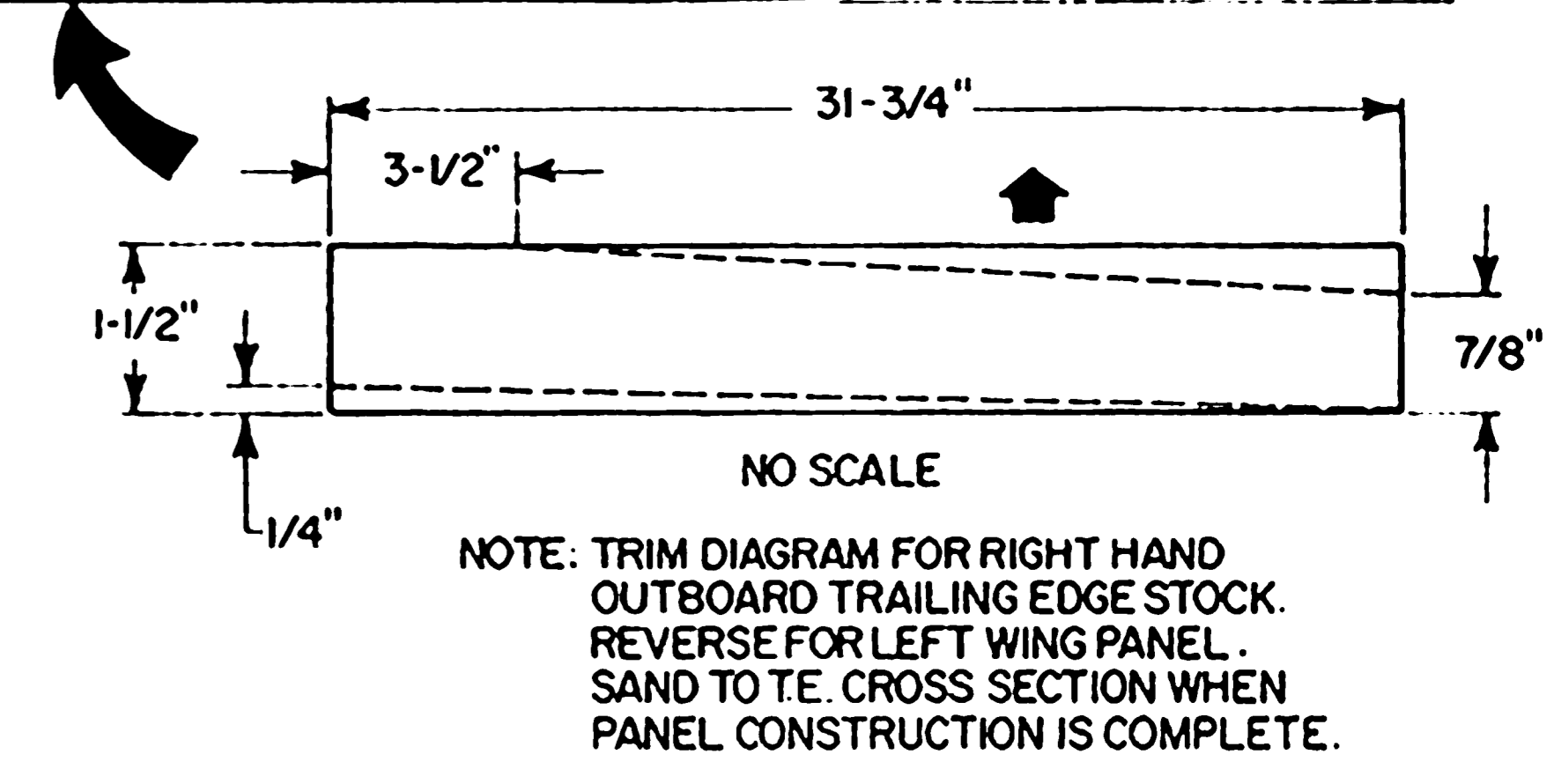
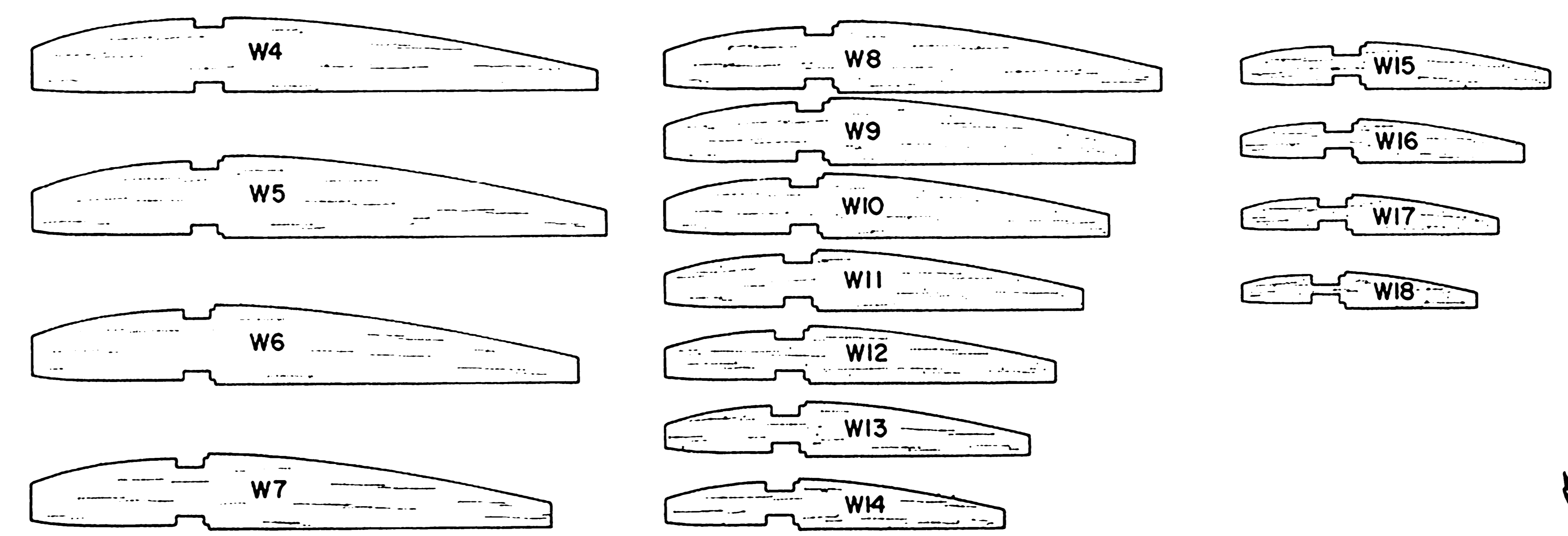
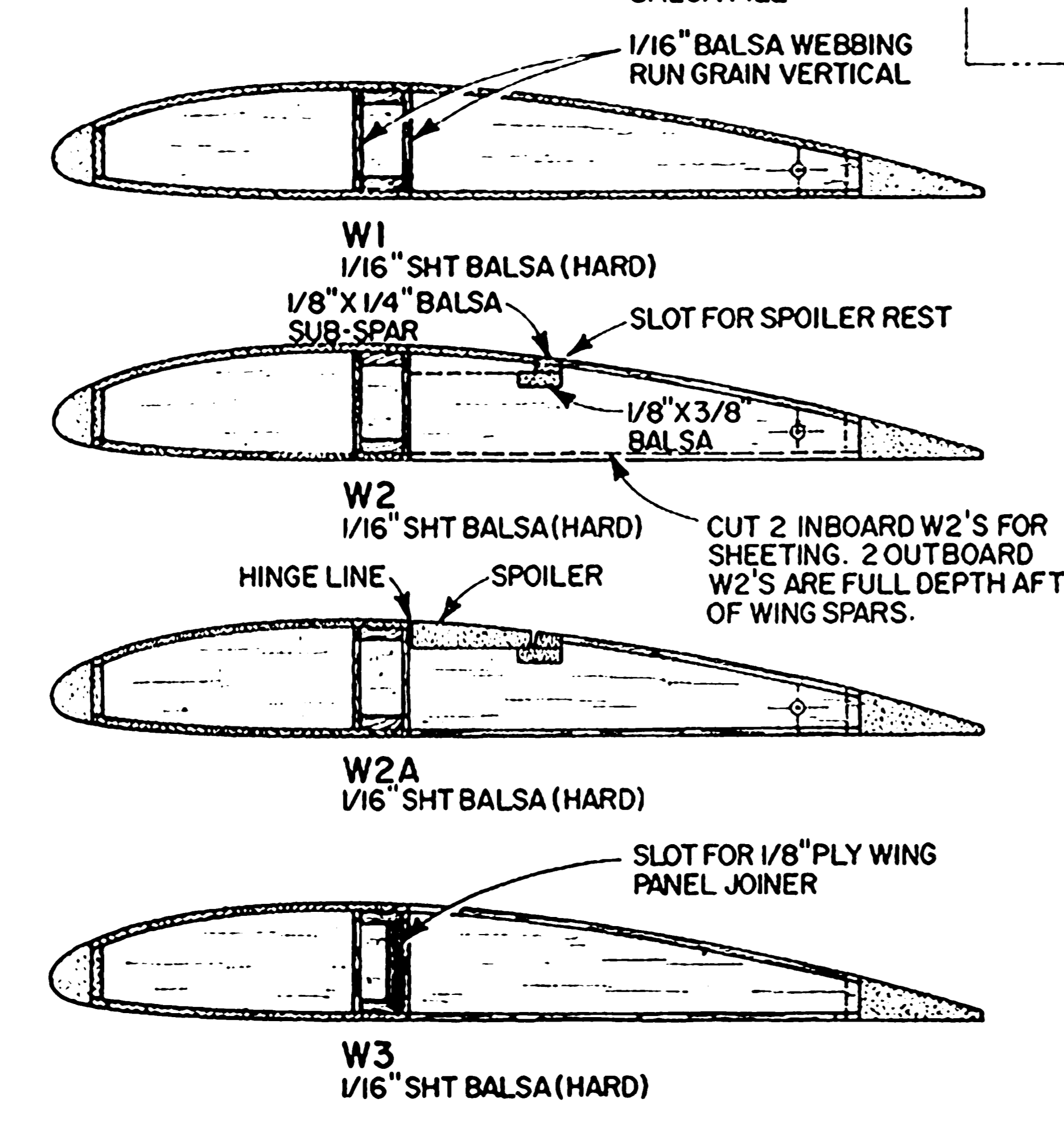
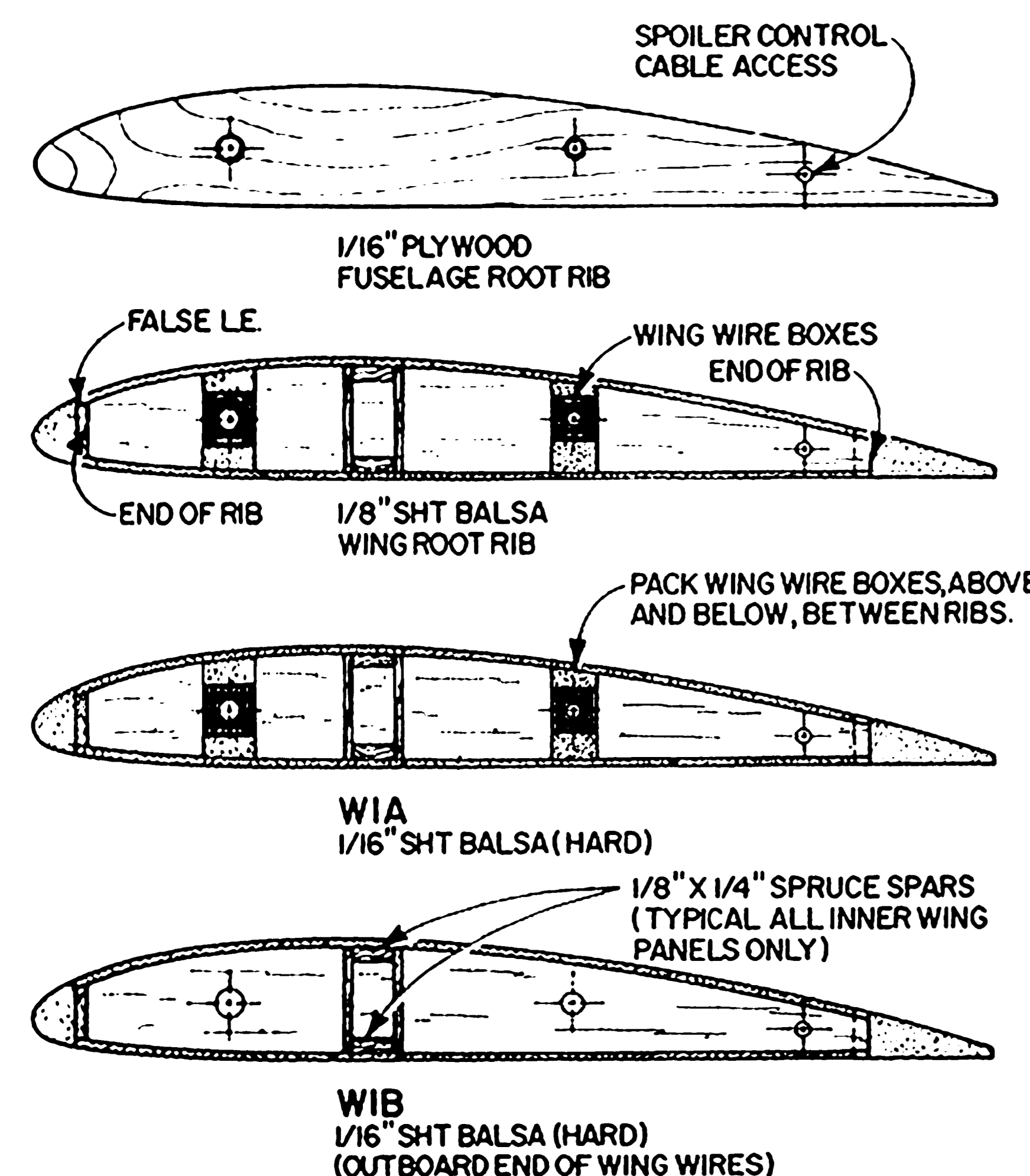
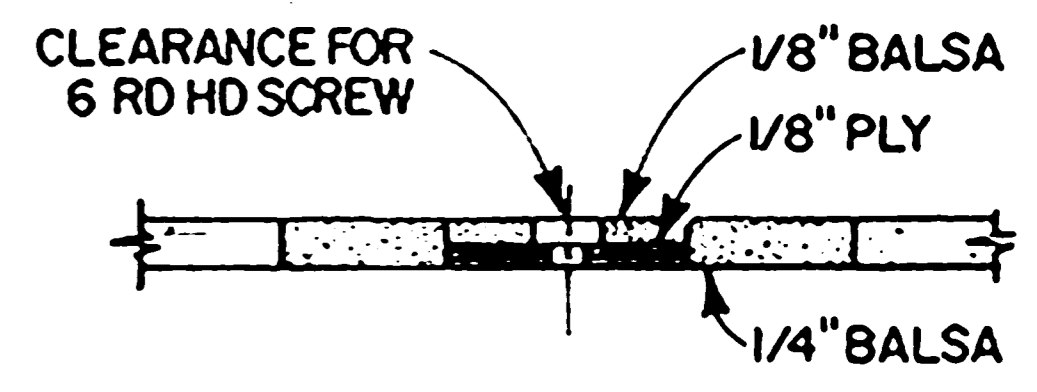
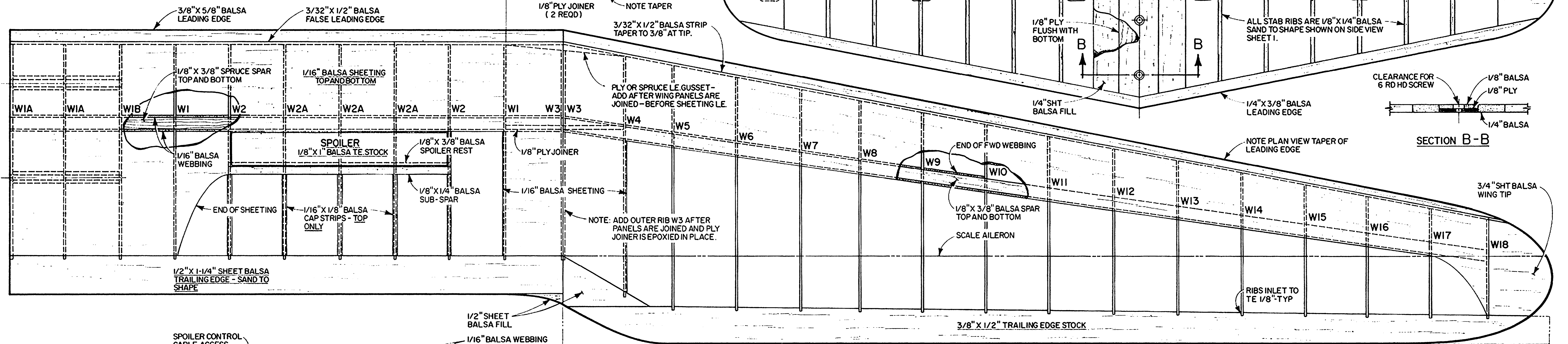
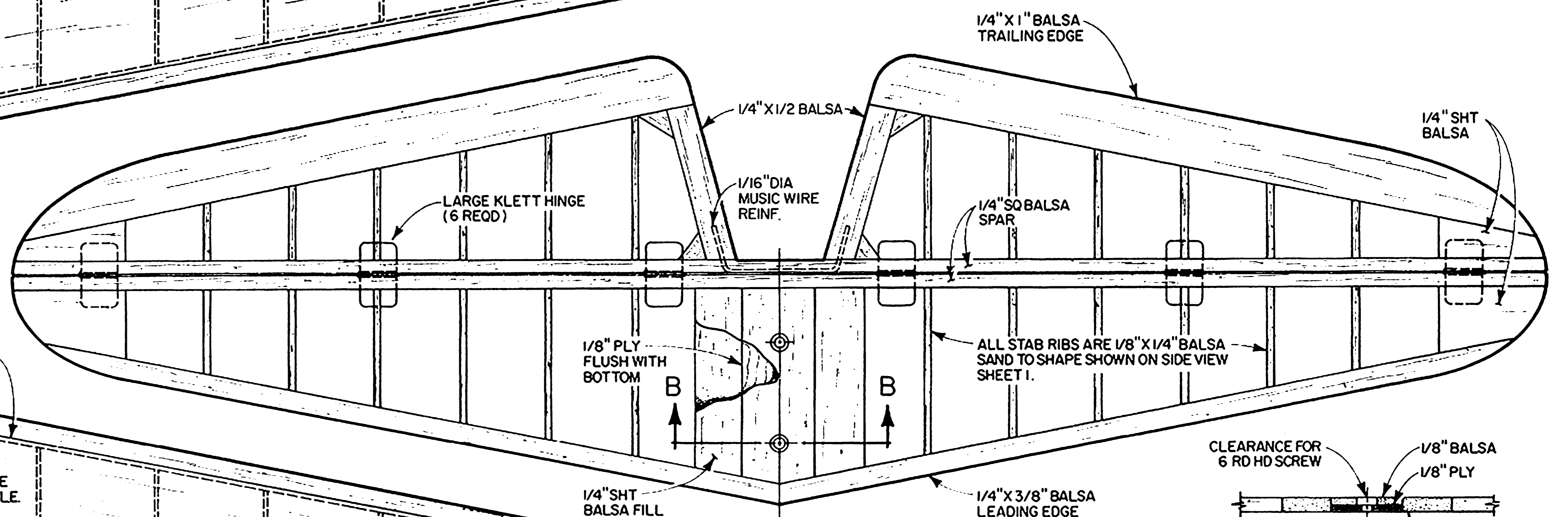
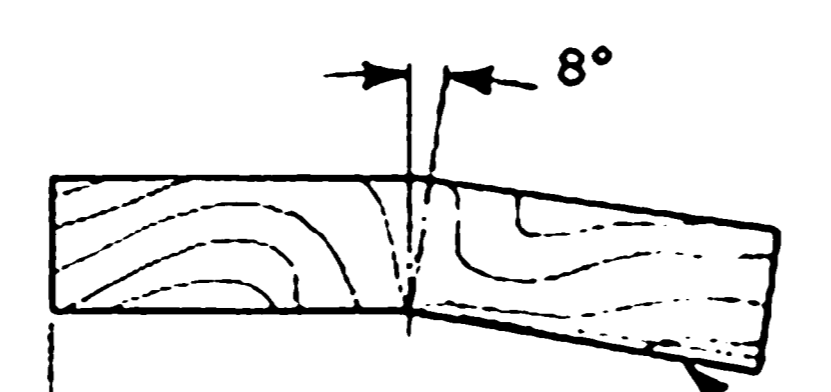
Editing By Hisat.



NOTE: SHEETING ON BOTTOM SIDE OF WING SAME AS TOP SIDE.



DIHEDRAL NOTE: ROOT RIBS/FUSELAGE ARE SET AT 10-1/2°. WING PANELS TAKE OUT 8° AT THE JOINT. THE REMAINING 2-1/2° IS ACCOUNTED FOR BY THE TAPER IN THE LOWER SURFACE OF THE OUTER WING PANEL.



NOTE: ALL RIBS ARE HARD 1/16" SHT BALSA UNLESS OTHERWISE NOTED.



HIRTH MINIMO A
A SCALE RC SAILPLANE

DESIGNED & DRAWN BY COL. JOHN A. de VRIES / PLANS BY JERRY SMITH

Editing By Hlsat.

