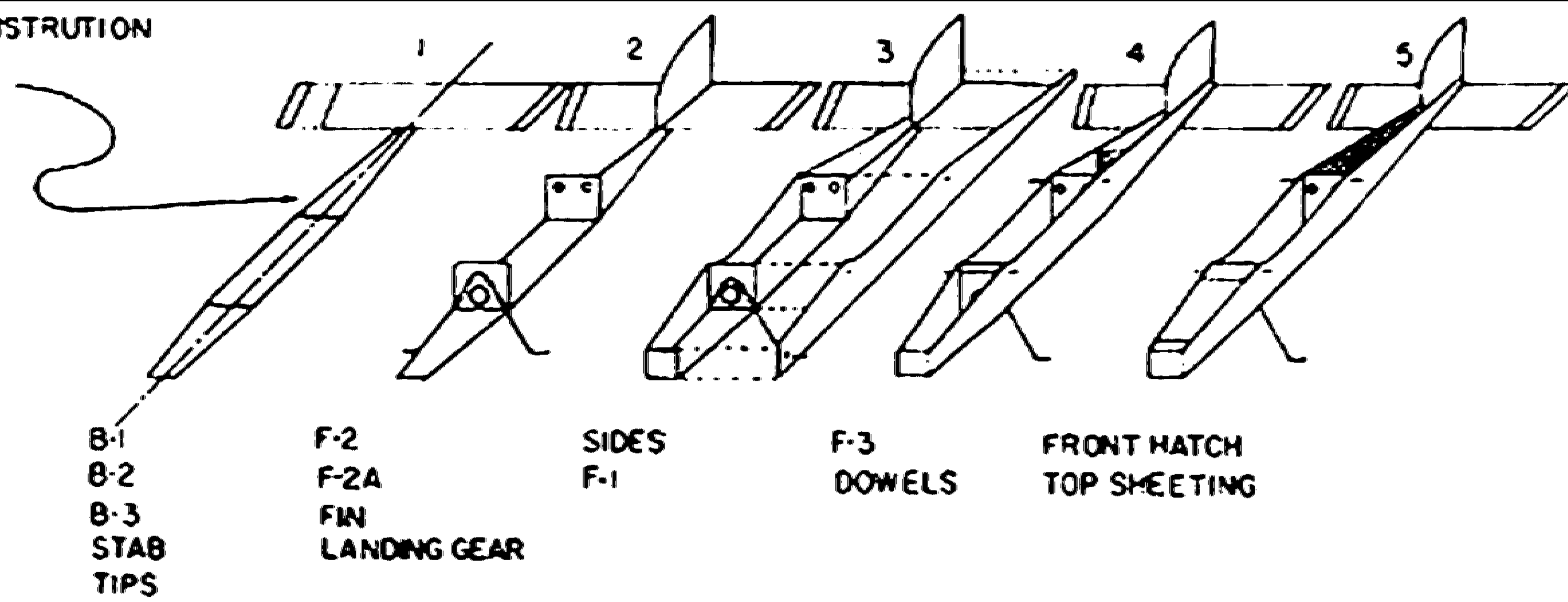
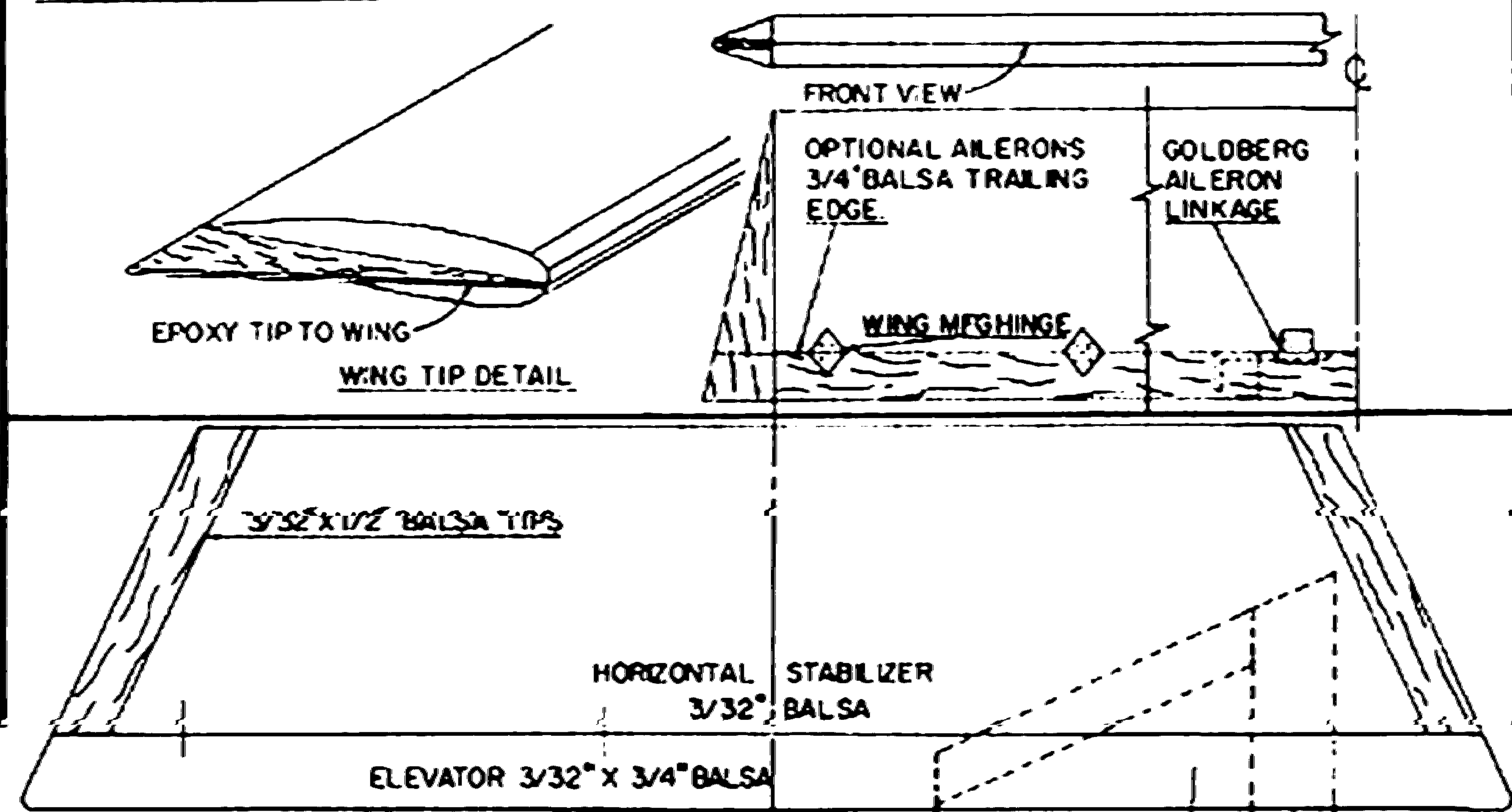


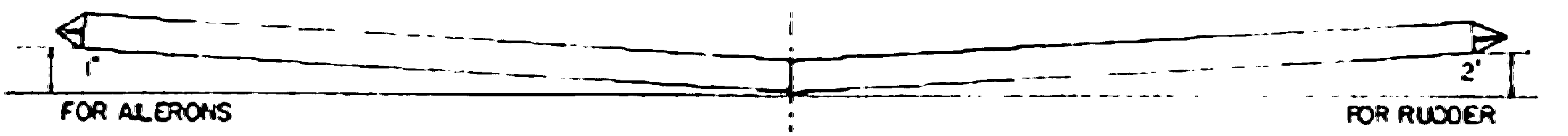
FUSELAGE CONSTRUCTION SEQUENCE



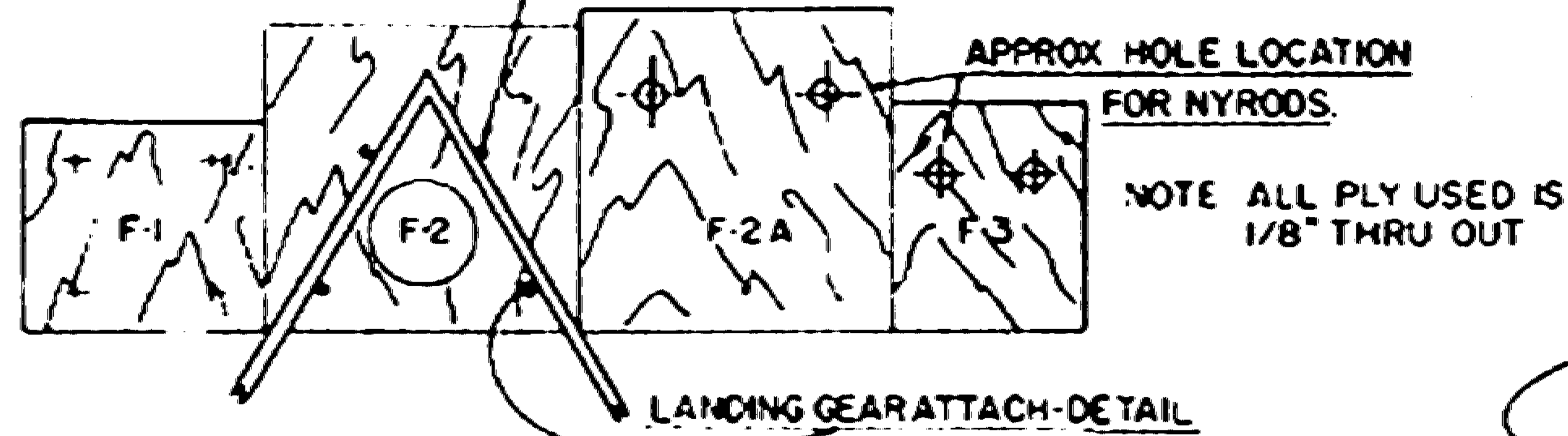
WING DETAILS, NO SCALE



WING DIHEDRAL DETAIL



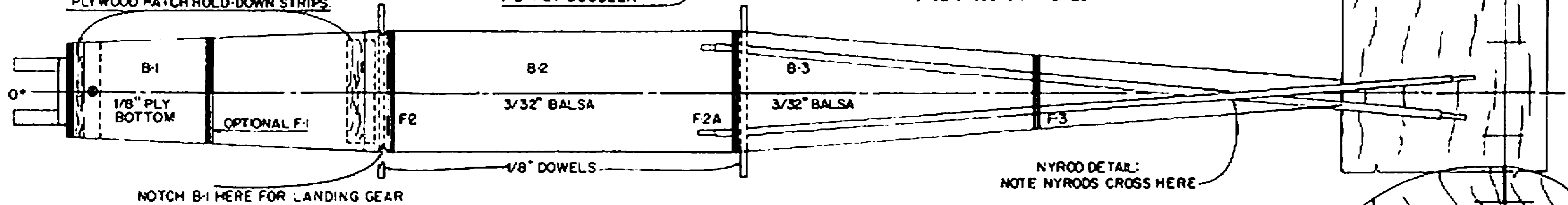
DRILL FOR "J" BOLTS



NOTE ALL PLY USED IS 1/8" THRU OUT

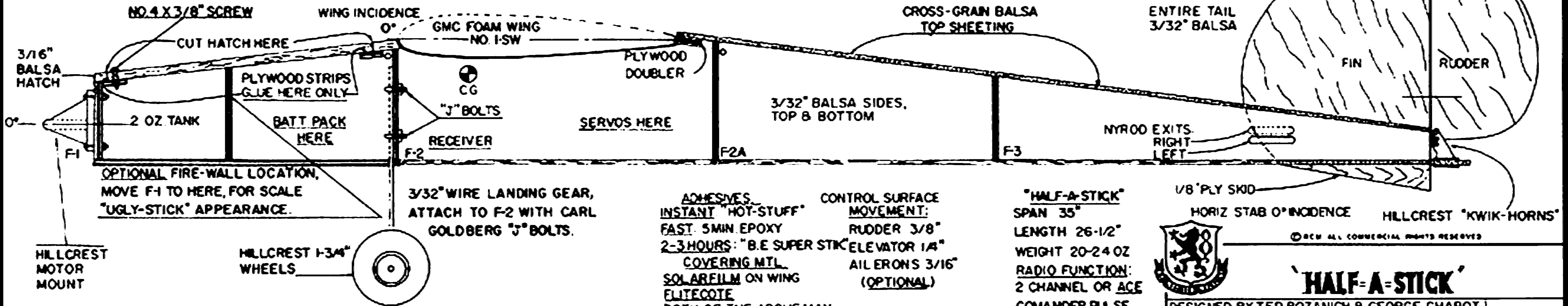
PLYWOOD MATCH HOLD-DOWN STRIPS

1/8" PLY-DOUBLER



NYROD DETAIL: NOTE NYRODS CROSS HERE

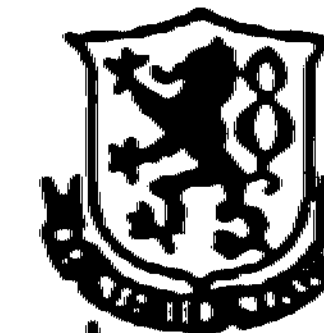
NOTCH B-1 HERE FOR LANDING GEAR



ADHESIVES:
 INSTANT "HOT-STUFF"
 FAST 5MIN EPOXY
 2-3 HOURS: "B.E SUPER STIK"
COVERING MTL:
 SOLAREFILM ON WING
 ELITECOTE
 BOTH OF THE ABOVE MAY
 BE USED ON THE FUSELAGE,
 AS WELL AS MONOCOTE.

CONTROL SURFACE MOVEMENT:
 RUDDER 3/8"
 ELEVATOR 1/4"
 AILERONS 3/16"
 (OPTIONAL)

"HALF-A-STICK"
 SPAN 35"
 LENGTH 26-1/2"
 WEIGHT 20-24 OZ
 RADIO FUNCTION:
 2 CHANNEL OR ACE
 COMANDER PULSE,
 RUDDER ONLY
 ENGINE COX TO 049



1/8" PLY SKID
 HORIZ STAB 0° INCIDENCE
 HILLCREST "KWIK-HORNS"

©RCM ALL COMMERCIAL RIGHTS RESERVED

"HALF-A-STICK"

DESIGNED BY TED BOZANICH & GEORGE CHABOT
 DRAWN & INKED BY GEORGE CHABOT