

THIS SCALE 52-1/2" SPAN BIPLANE IS DESIGNED FOR ANY .40 TO .48 4-STROKE ENGINES.

COPYRIGHT RCM, ALL COMMERCIAL RIGHTS RESERVED

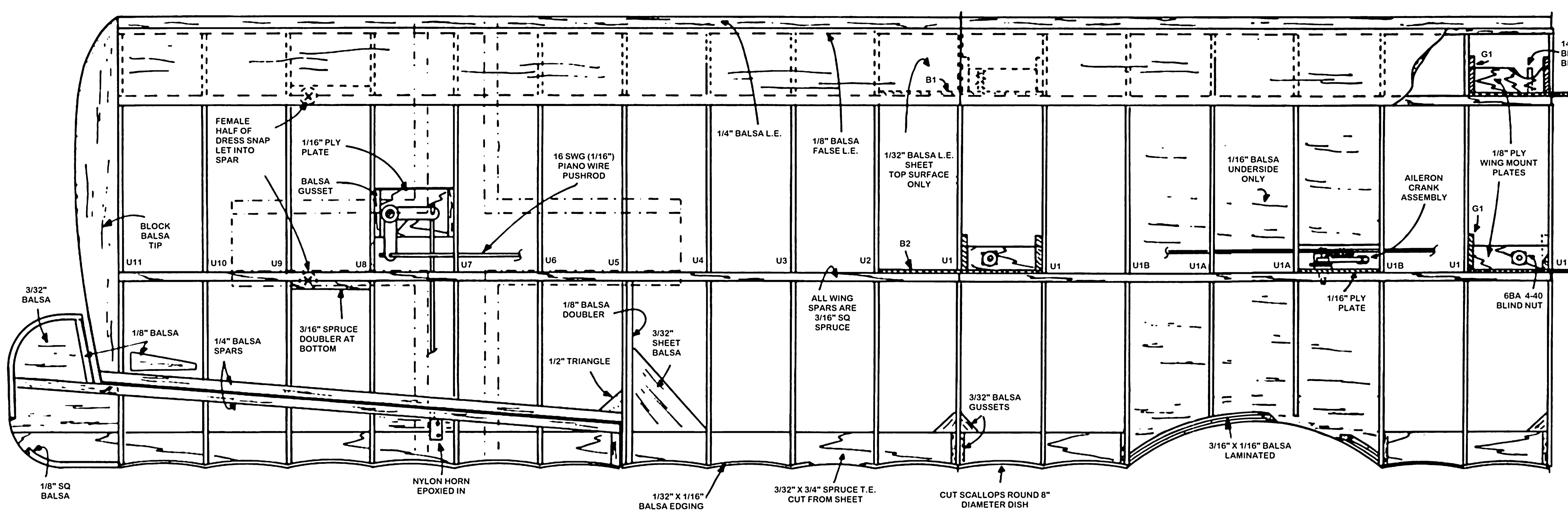
FOKKER D-VII

DESIGNED AND DRAWN BY GORDEN E. WHITEHEAD

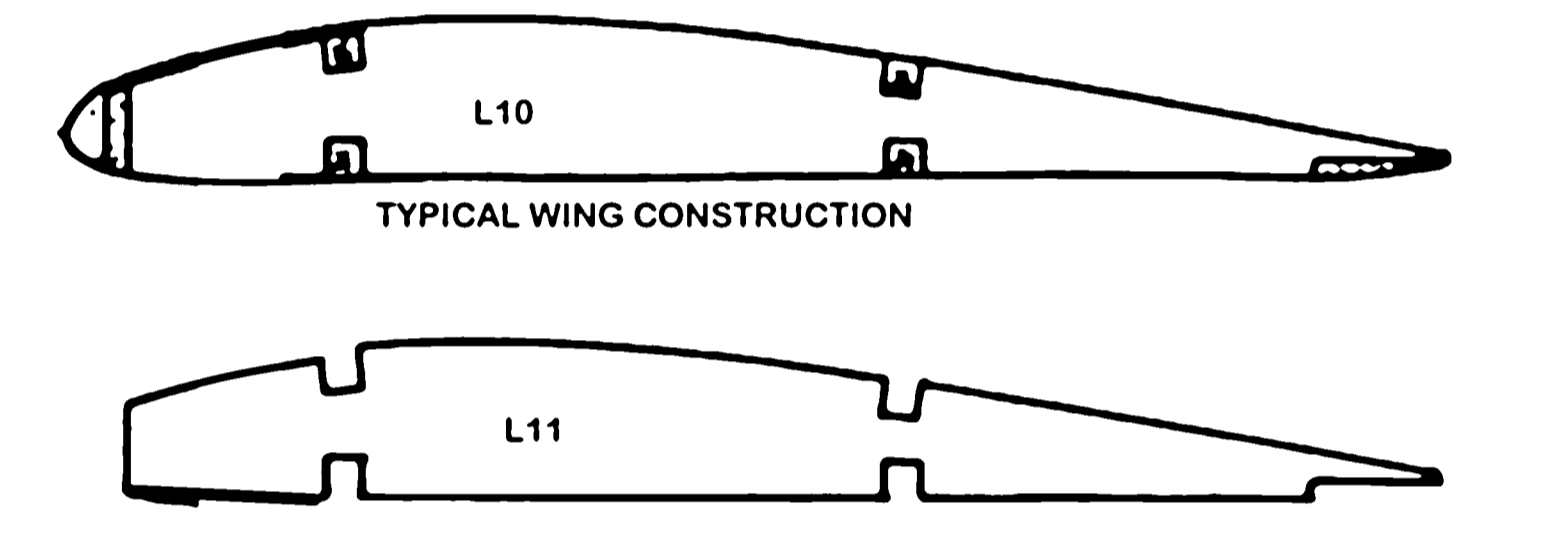
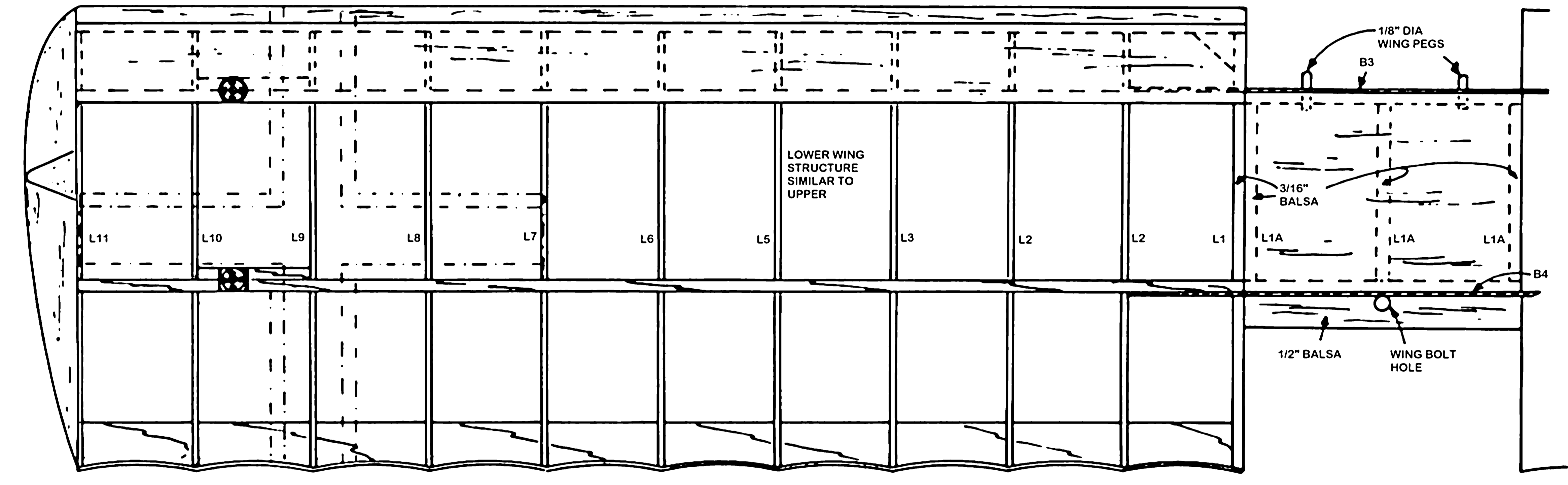
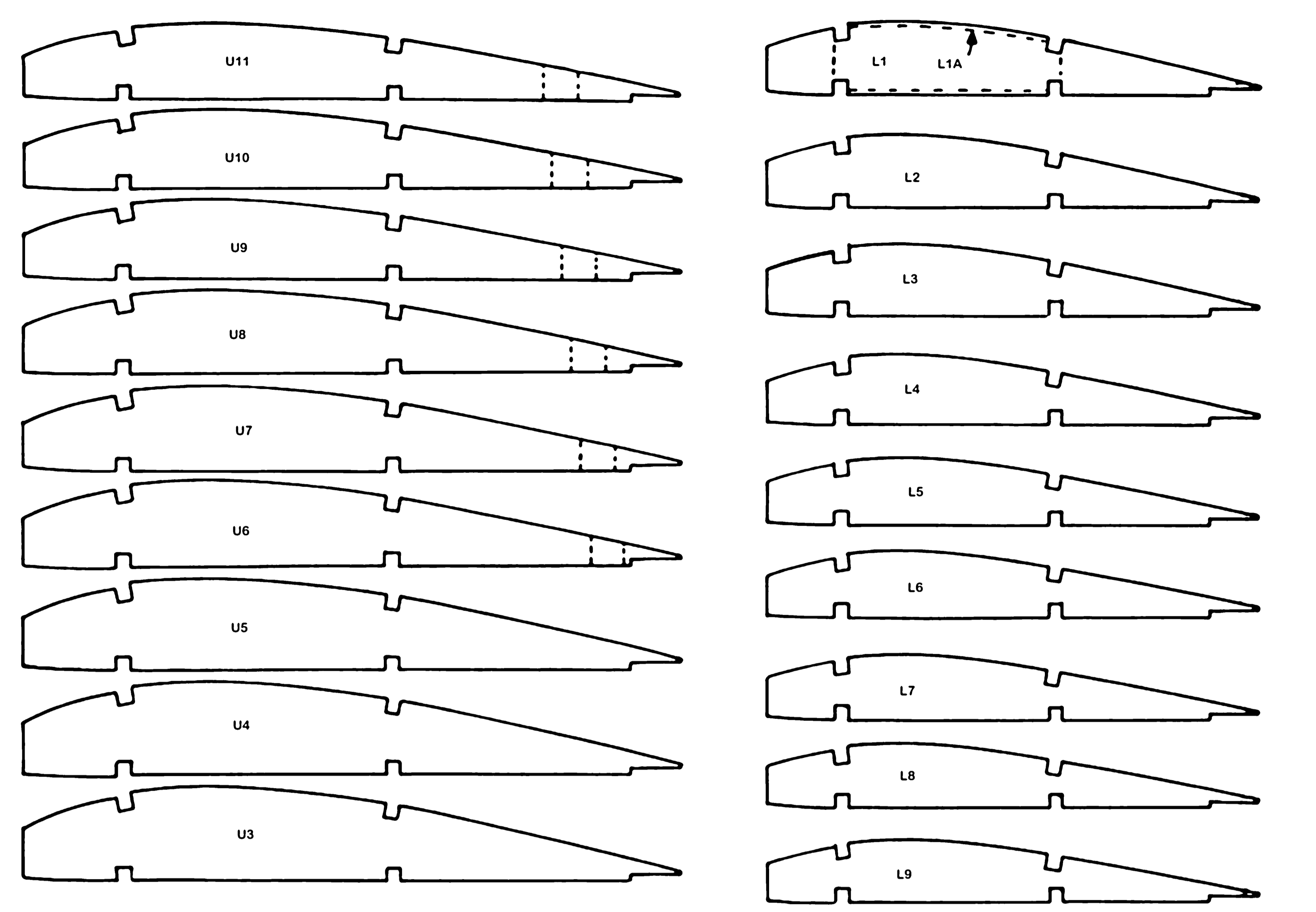
SHEET 1 OF 2

0 1 2 3 4 5 6

PLAN NO. 996

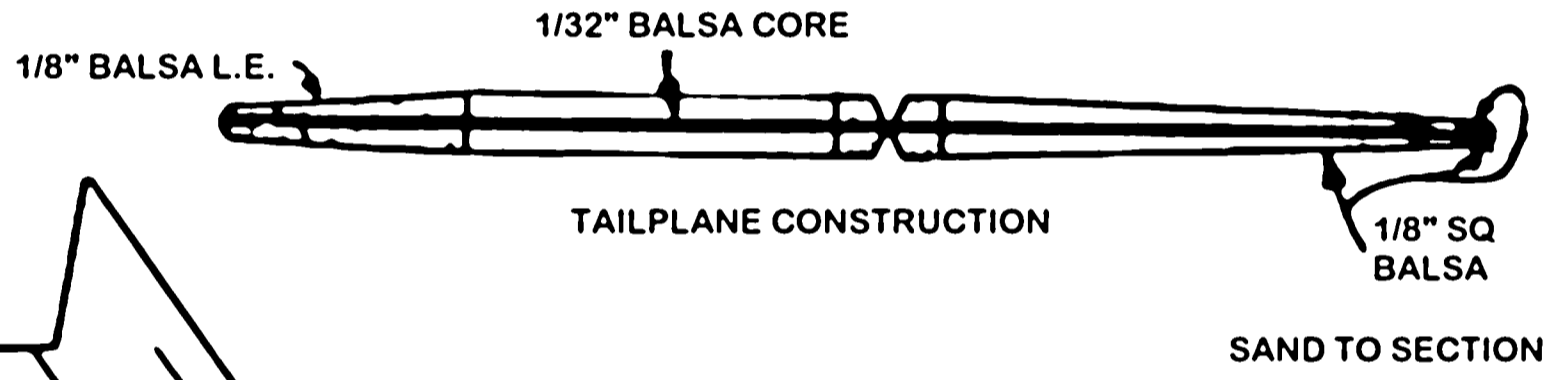


NO DIHEDRAL ON TOP SURFACE OF EITHER WING
BLOCK UP LOWER TIP 0.2"
BLOCK UP UPPER TIP 0.3"

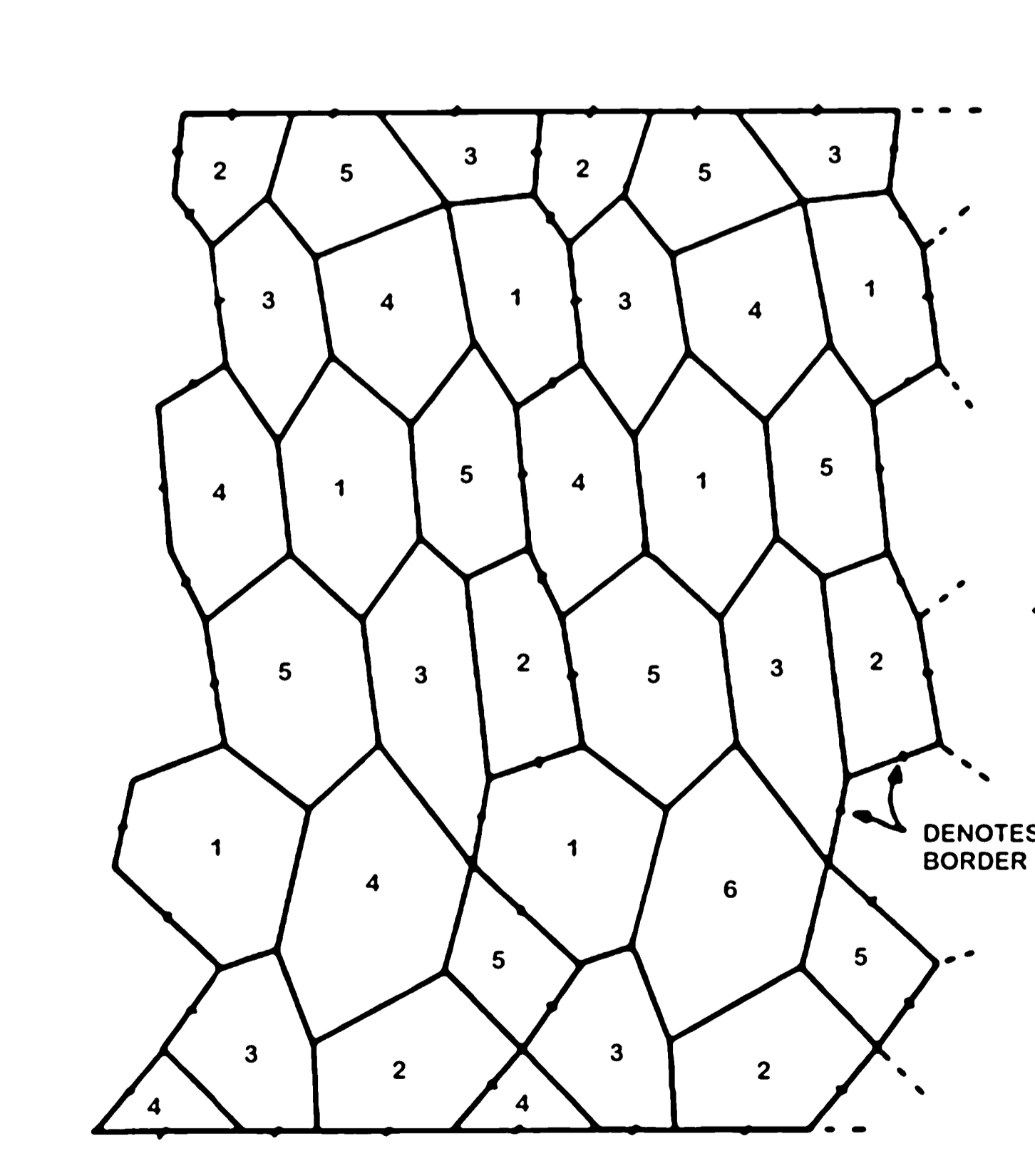


T.E. BEFORE & AFTER SHAPING TO FINE EDGE

ALL RIBS 3/32" BALSAL EXCEPT WHERE NOTED



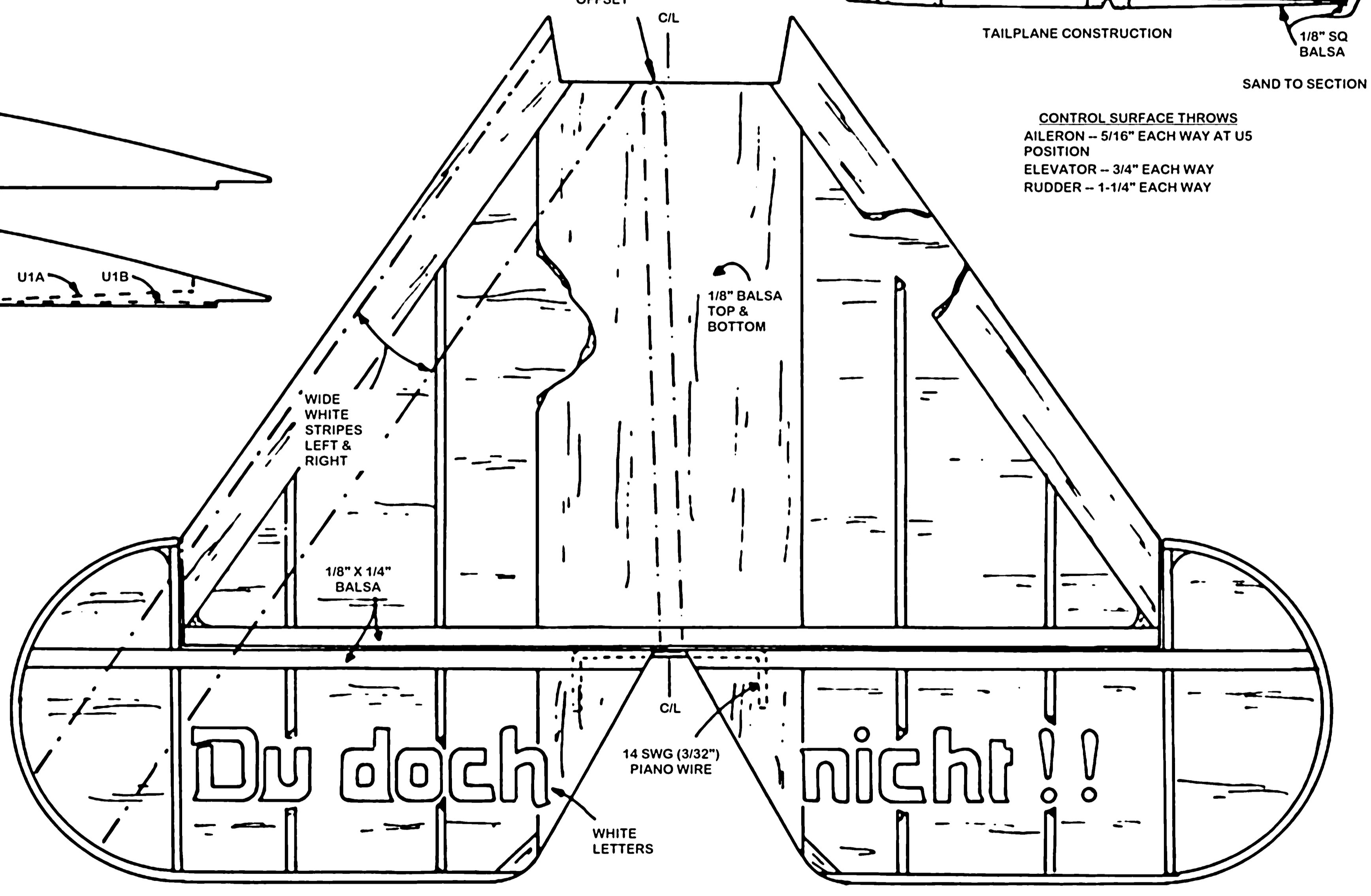
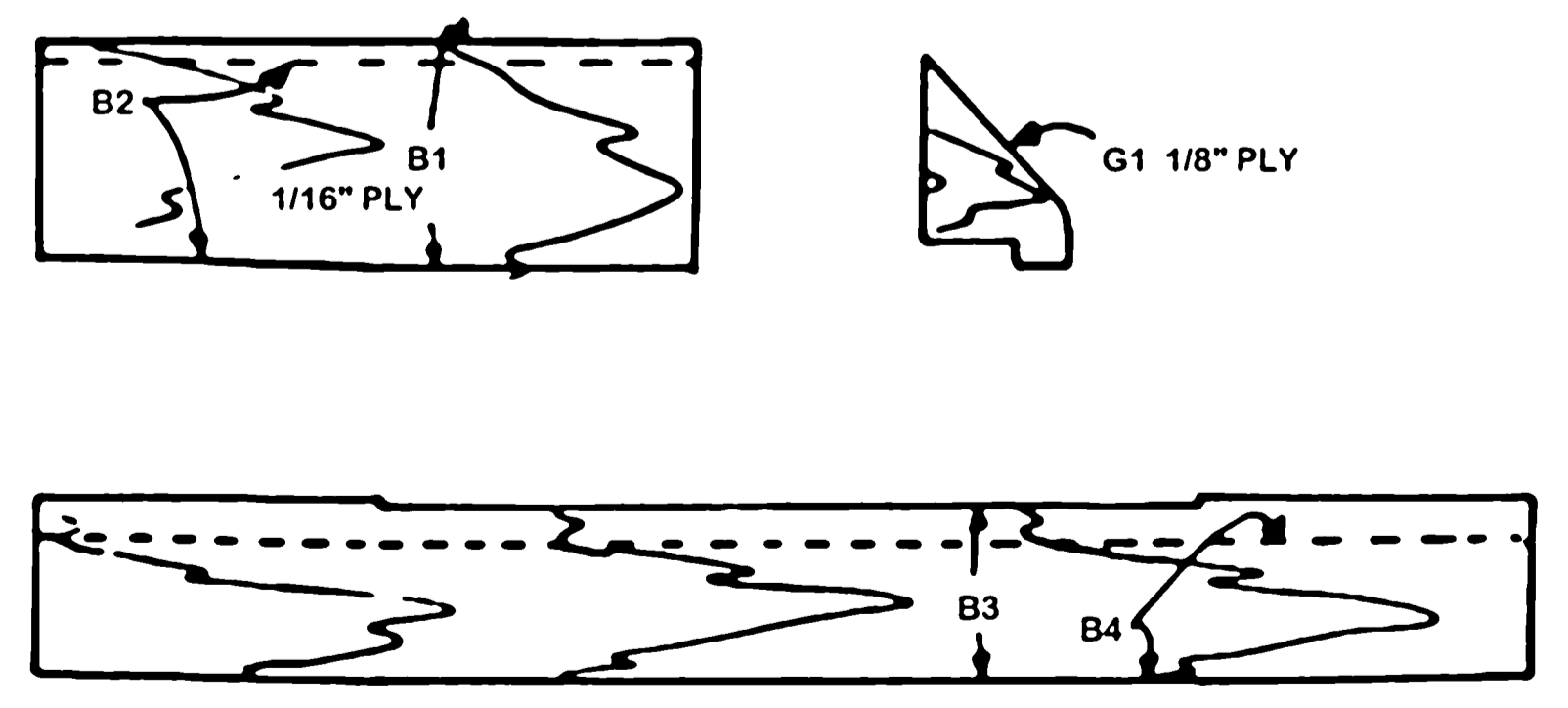
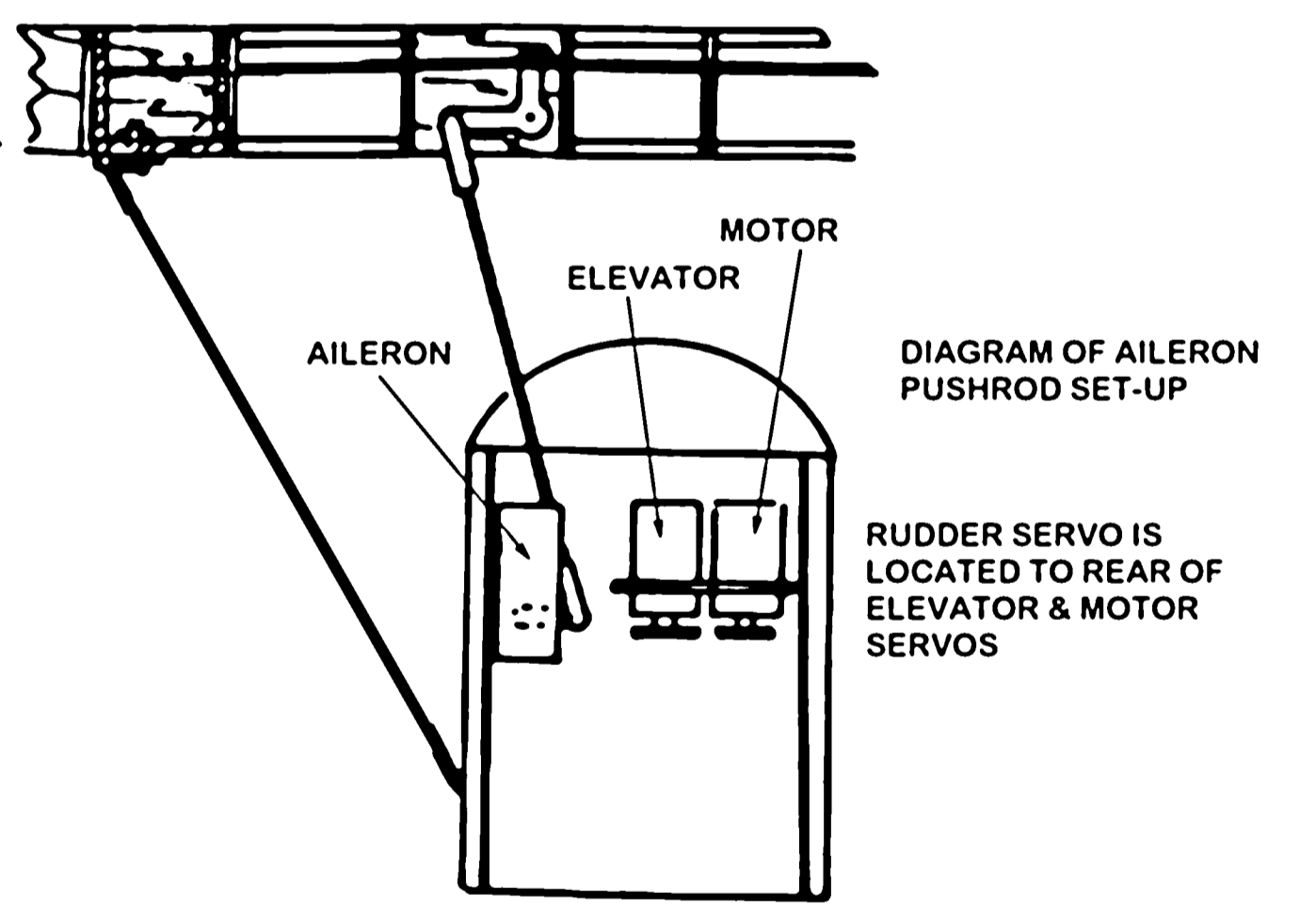
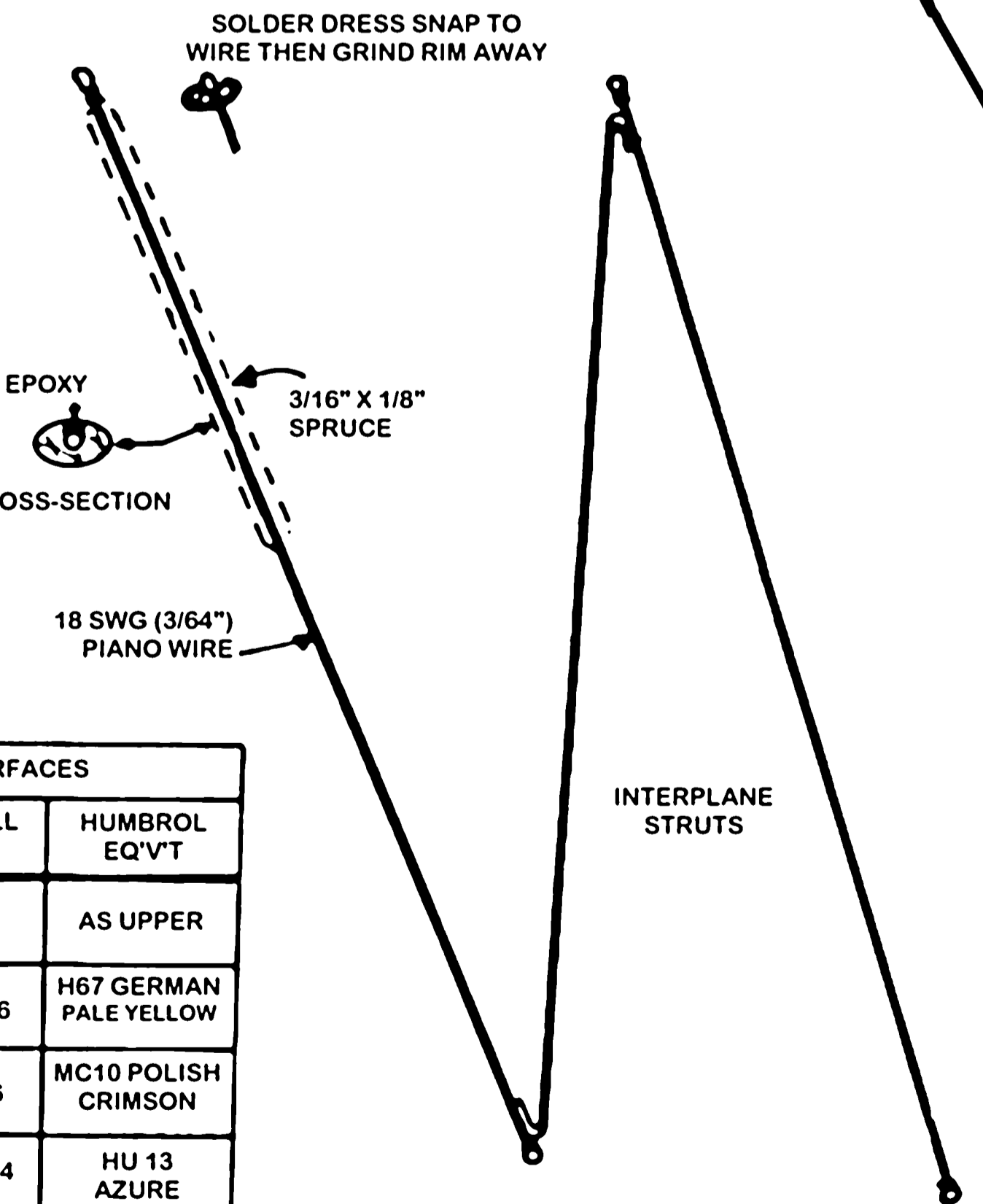
CONTROL SURFACE THROWS
AILERON - 5/16" EACH WAY AT U5 POSITION
ELEVATOR - 3/4" EACH WAY
RUDDER - 1-1/4" EACH WAY



UDET'S D.VII
FUSELAGE AND TAIL: RED WITH WHITE PERSONAL MARKINGS, BLACK SERIAL
FIN/RUDDER: WHITE
TOP WING: UPPER SURFACE RED/WHITE STRIPES OR LOZENGE
BOTTOM WING: LOZENGE

REFERENCE FOR LOZENGE CAMOUFLAGE IS:
ALBATROS D.VA, BY R.C. MIKESH
HUMBROL COLOURS ARE G.E.W.'S INTERPRETATION

	UPPER SURFACES			LOWER SURFACES		
	COLOUR	MUNSELL CODE	HUMBROL EQ'Y'T	COLOUR	MUNSELL CODE	HUMBROL EQ'Y'T
1	PURPLE	SP 3/4	MC26 ROYAL PURPLE	PURPLE	5 P 4/4	AS UPPER
2	OCHRE	2.5 Y 5/4	62 LEATHER	YELLOW	10 YR 6/6	H67 GERMAN PALE YELLOW
3	GREEN	7.5 GY 4/4	HF2 VERT	LILAC	5 RP 5/6	MC10 POLISH CRIMSON
4	BLUE	5 PB 2/6	67 TANK GREY	BLUE	2.5 PB 4/4	HU 13 AZURE
5	BLUE-GREEN	7.5 BG 3/4	88 DECK GREEN	BLUE-GREEN	7.5 BG 4/4	88 DECK GREEN



COPYRIGHT RCM ALL COMERCIAL RIGHTS RESERVED

FOKKER D-VII

DESIGNED & DRAWN BY GORDON E. WHITEHEAD

SHEET 2 OF 2