

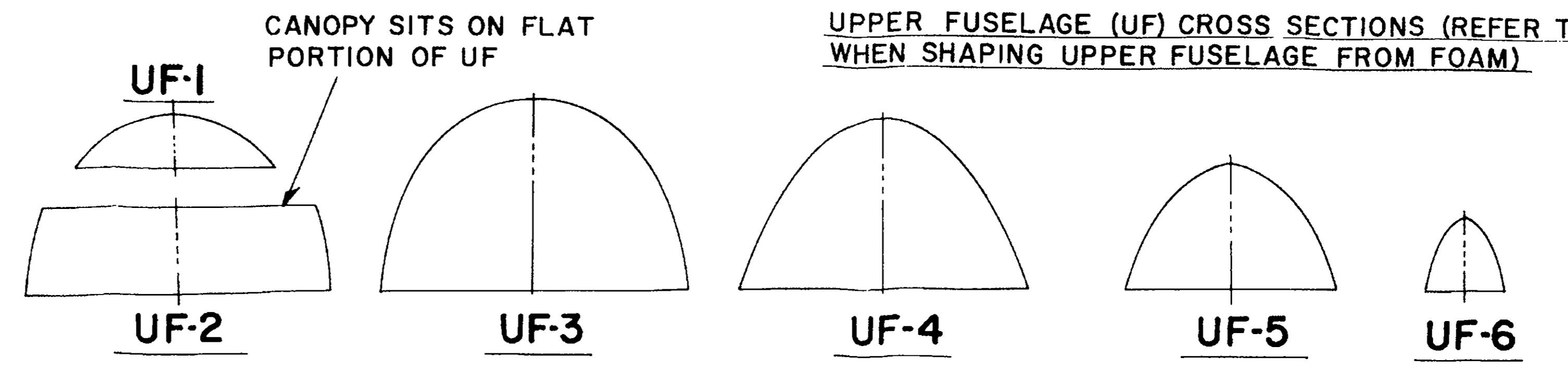
OUTER SECTION FILLET

CENTER SECTION FILLET

FUSELAGE TOP VIEW

CROSS SECT. VIEW

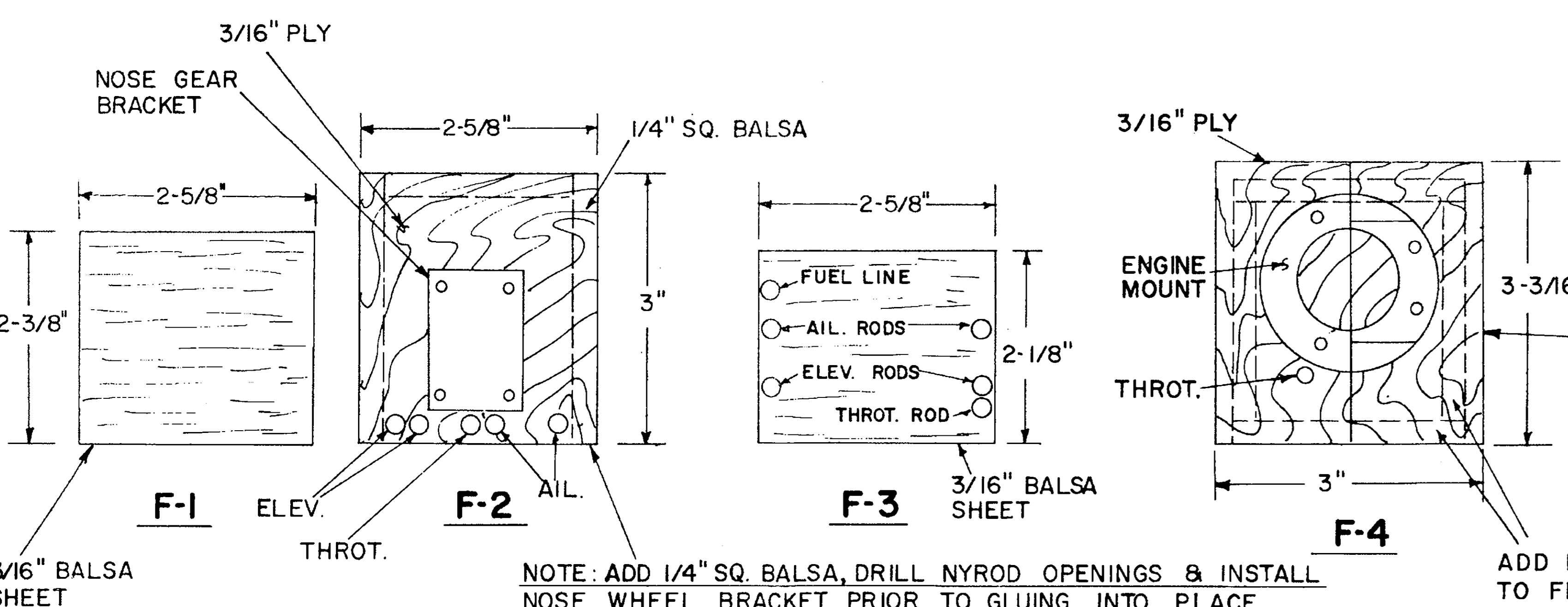
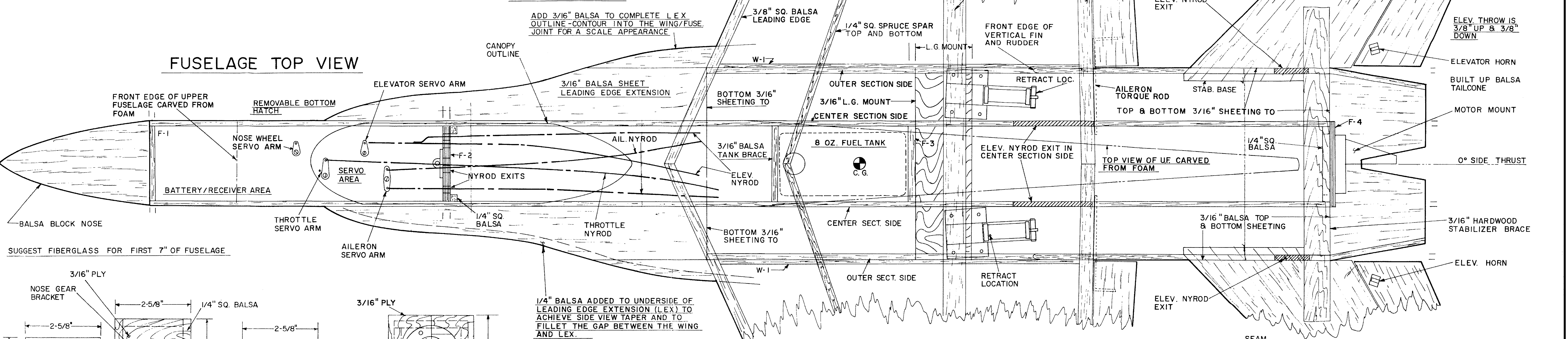
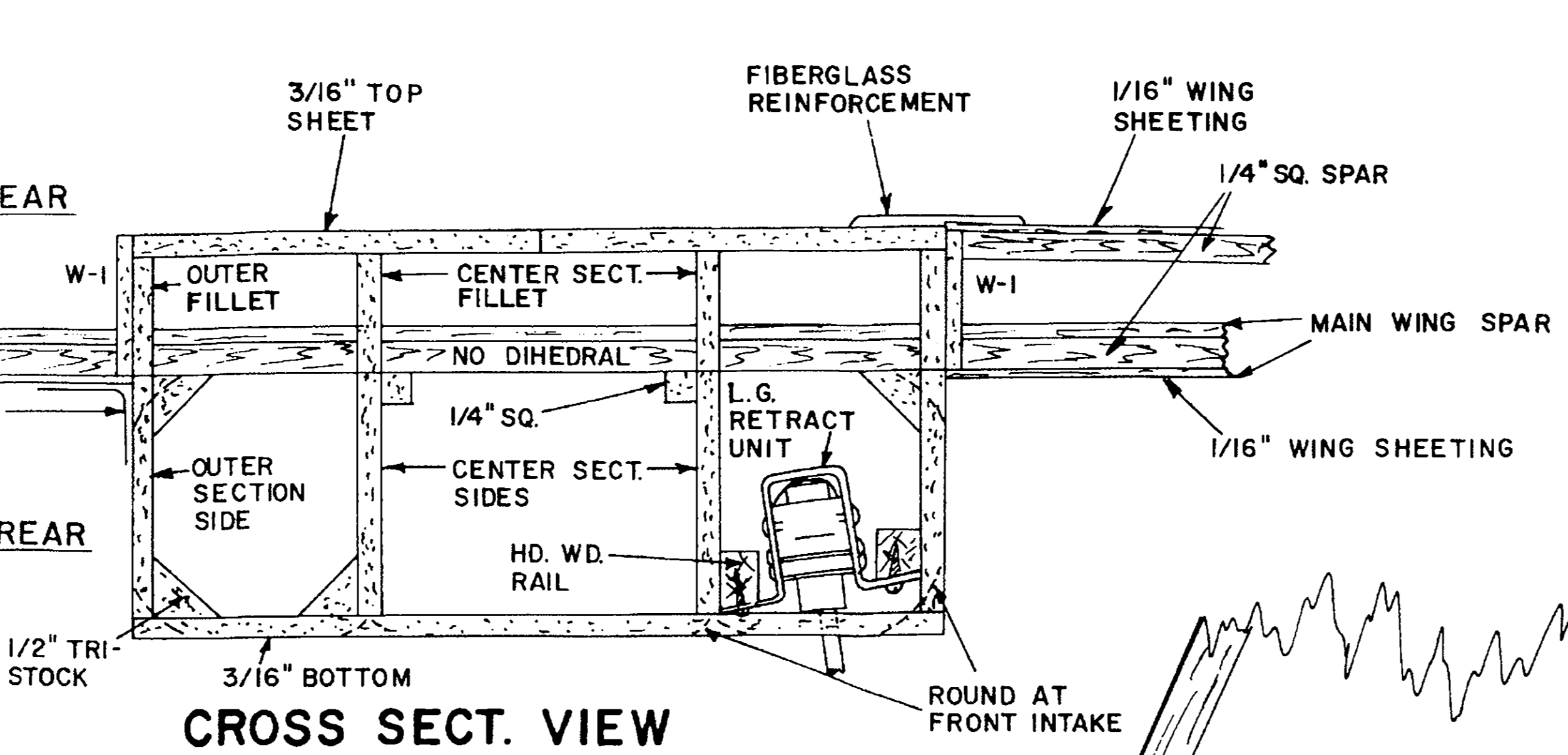
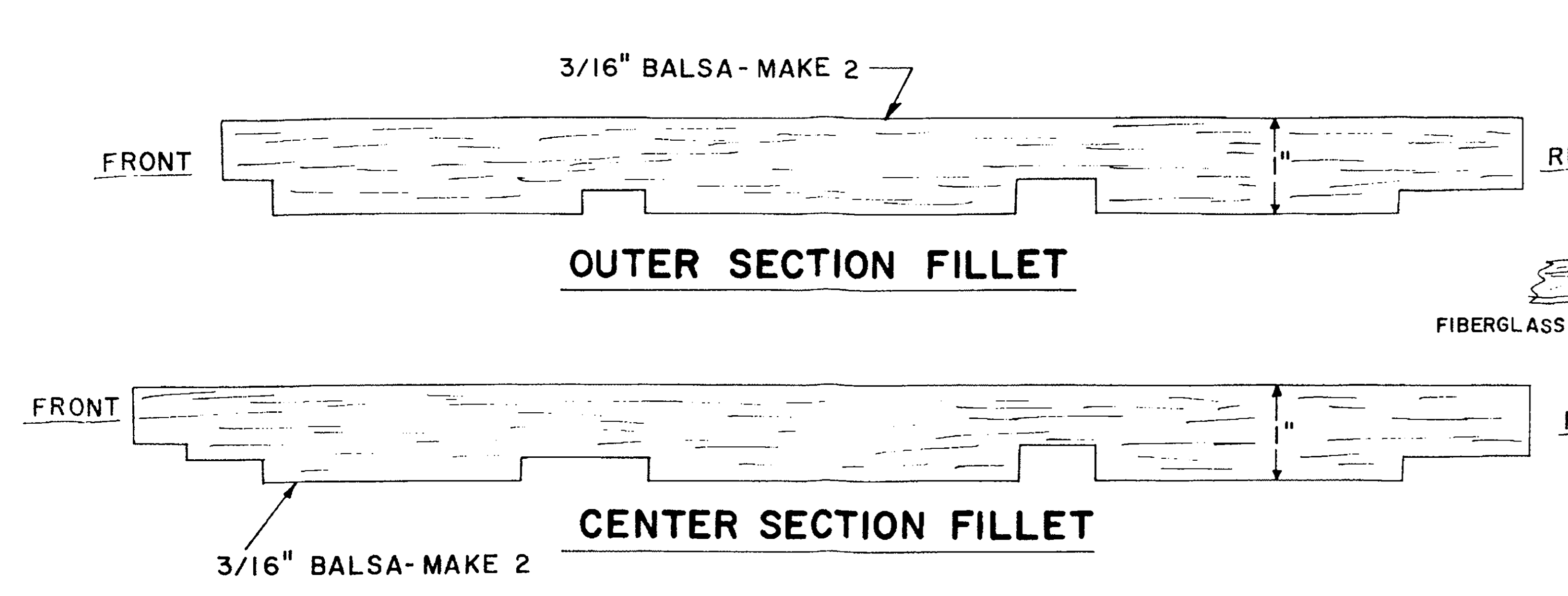
FUSELAGE SIDE VIEW



STABILIZER ELEV.

FIN RUD.

FIN DETAIL

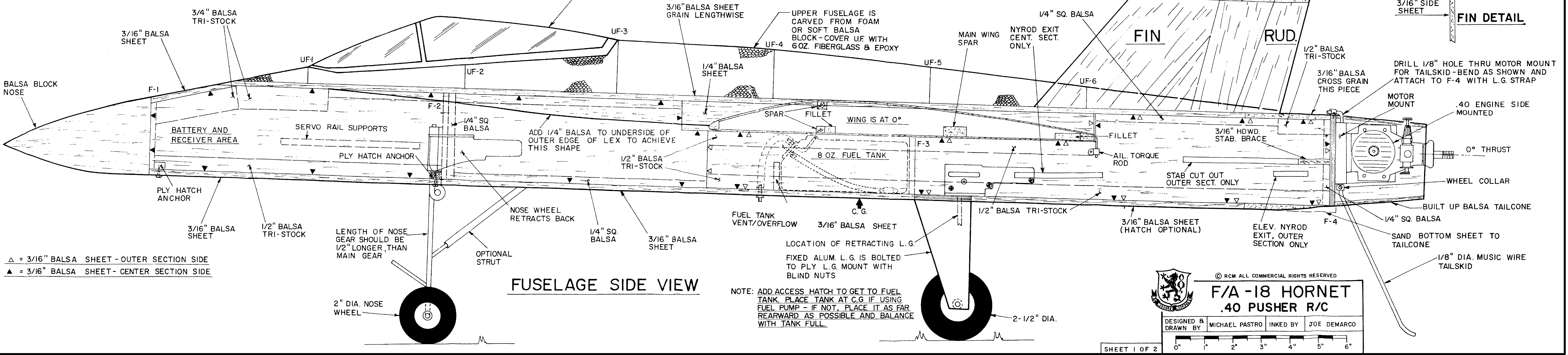


1/4" Balsa added to underside of leading edge extension (LEX) to achieve side view taper and to fillet the gap between the wing and LEX.

NOTE: ADD 1/4" SQ. Balsa, INSTALL BLIND NUTS FOR ENGINE MOUNT, AND DRILL NYROD AND FUEL TUBE OPENINGS PRIOR TO GLUING F-4 INTO PLACE.

NOTE: FOR A STRONGER CONTOURED WING/BODY JOINT SEAM THE JOINT BETWEEN THE TOP WING SHEETING & THE 3/16" TOP FUSELAGE SHEETING WITH FIBERGLASS.

CANOPY IS A KOUGAR REPLACEMENT FROM SIG - TRIM TO FIT



△ = 3/16" Balsa Sheet - Outer Section Side
▲ = 3/16" Balsa Sheet - Center Section Side

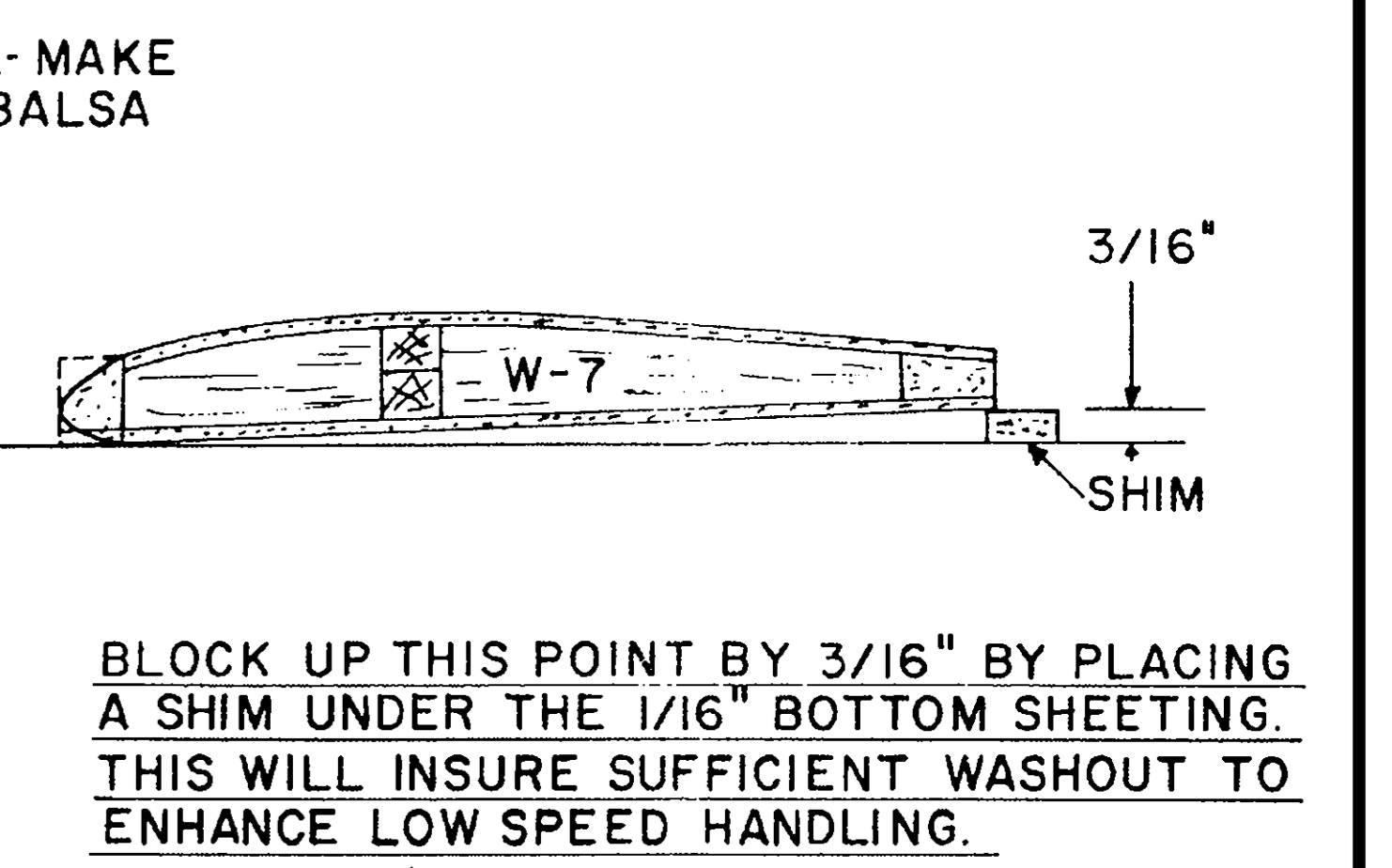
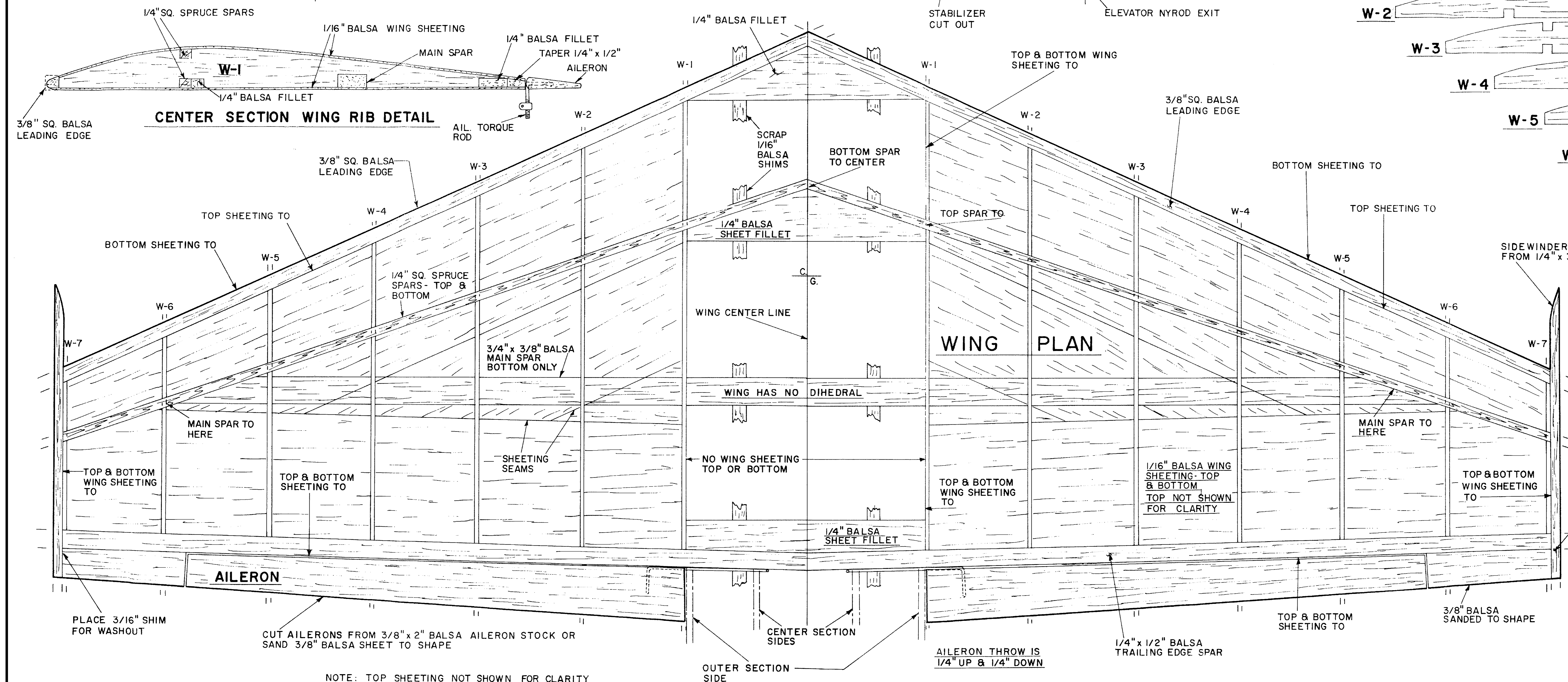
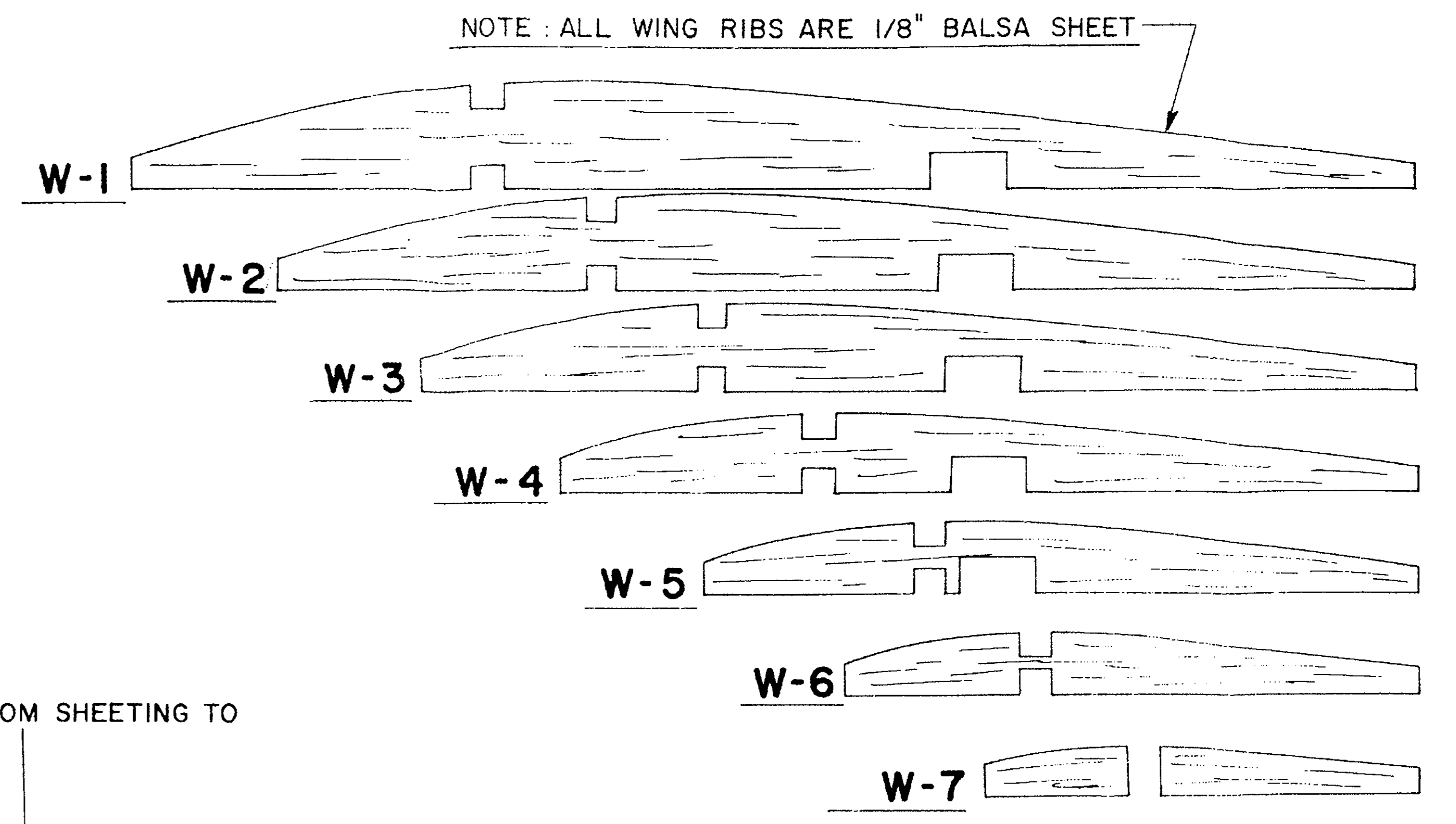
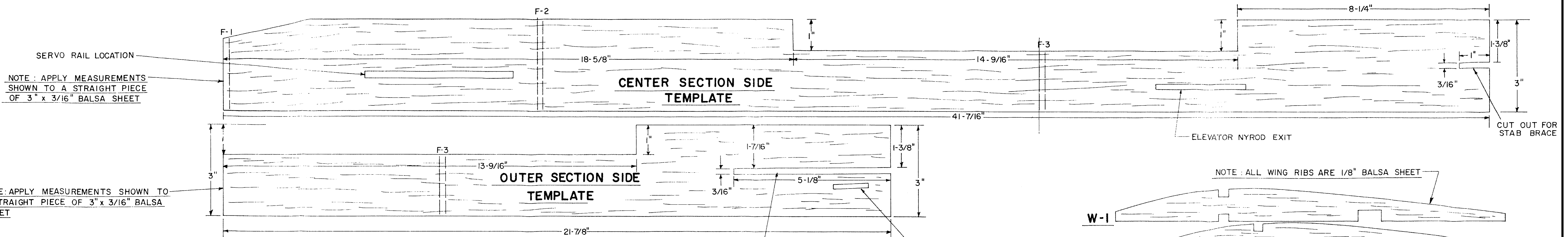
NOTE: ADD ACCESS HATCH TO GET TO FUEL TANK. PLACE TANK AT C.G. IF USING FUEL PUMP - IF NOT, PLACE IT AS FAR REARWARD AS POSSIBLE AND BALANCE WITH TANK FULL.

© RCM ALL COMMERCIAL RIGHTS RESERVED

F/A -18 HORNET
.40 PUSHER R/C

DESIGNED & DRAWN BY MICHAEL PASTRO INKED BY JOE DEMARCO

SHEET 1 OF 2



BLOCK UP THIS POINT BY 3/16" BY PLACING A SHIM UNDER THE 1/16" BOTTOM SHEETING. THIS WILL INSURE SUFFICIENT WASHOUT TO ENHANCE LOW SPEED HANDLING.

SPECIFICATIONS

WING SPAN	42-1/4"
LENGTH	53"
WING AREA	500 SQ. IN.
WING LOADING	23-25 OZ./SQ. FT.
WEIGHT	5 - 5.5 LBS.
CHANNELS	4 (5 WITH RETR.)
ENGINE	.40



© RCM ALL COMMERCIAL RIGHTS RESERVED

F/A - 18 HORNET .40 PUSHER R/C

DESIGNED & DRAWN BY MICHAEL PASTRO INKED BY JOE DEMARCO

