

NOTE:
RHO (NO. 1002)
PNEUMATIC RETRACT
UNIT SHOWN

NOTE:
CUT OUTAILERONS &
FLAPS AFTER WING
PANELS ARE CONSTRUCTED

NOTE: STABILIZER IS SHOWN
IN FLAT POSITION.

SECTION A-A (FLAP)

SECTION B-B (AILERON)

BEVEL LOWER SHEETING
AS SHOWN

3/32" SHEET (TOP & BOTTOM)

3/8" SHEET-ELEVATOR
(BEVEL AS SHOWN)

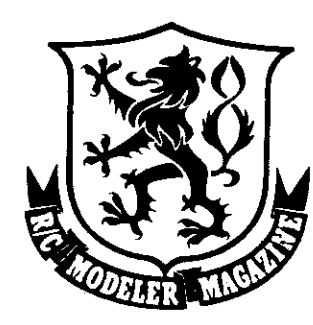
3/8" SHEET

3/32" SHEET-
(TOP & BOTTOM)

5/8" X 3/4"
TIP BLOCK

ALL WING RIBS ARE 1/8" SHEET

NOTE: RIGHT WING AND STABILIZER ARE SHOWN. BOTH HALVES OF
THE STABILIZER ARE ASSEMBLED OVER THE PLAN VIEW AS
THEY ARE SYMMETRICAL. THE LEFT WING PANEL IS ALSO
ASSEMBLED OVER THE PLAN VIEW, BUT IN AN INVERTED
MANNER.



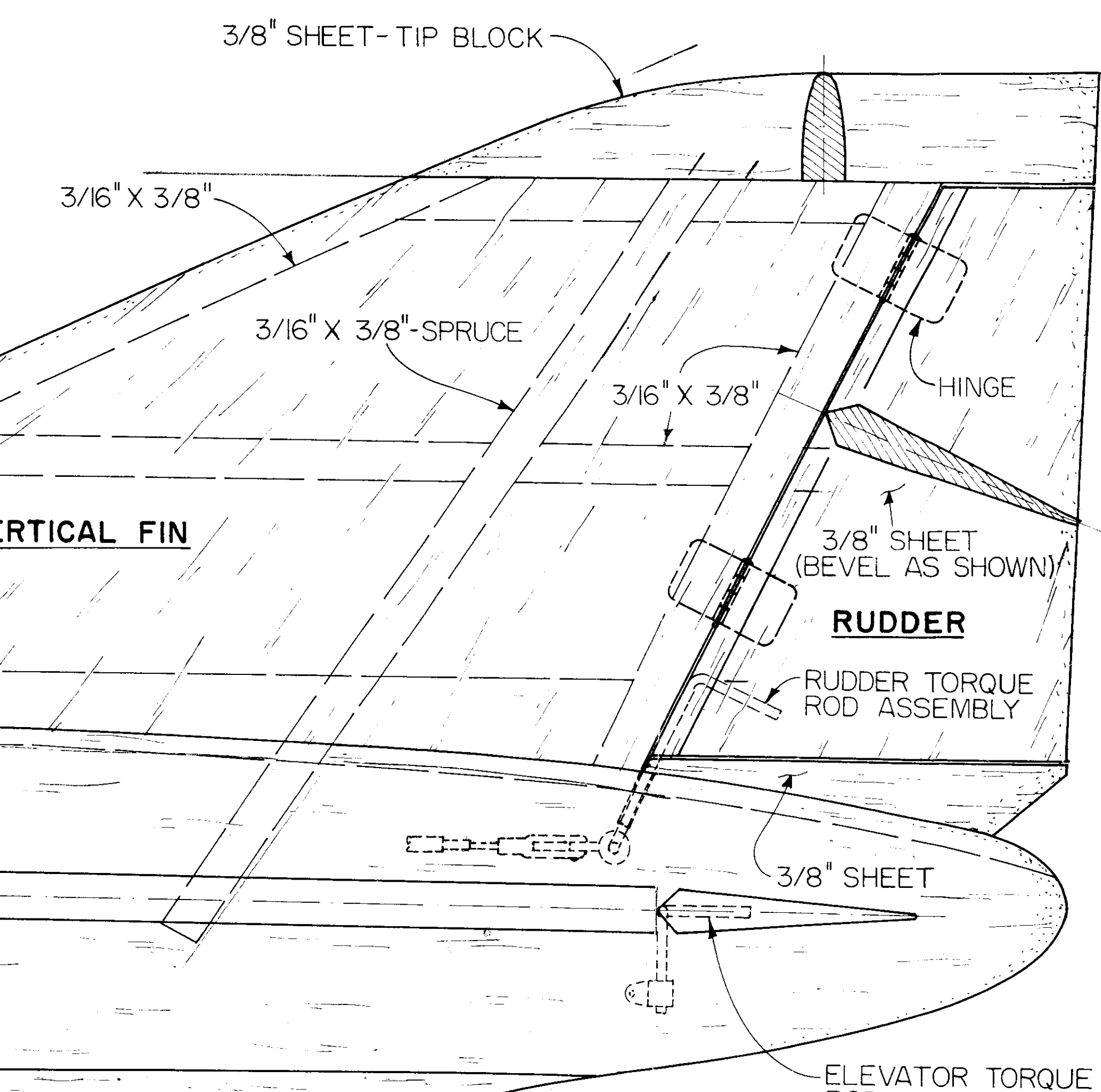
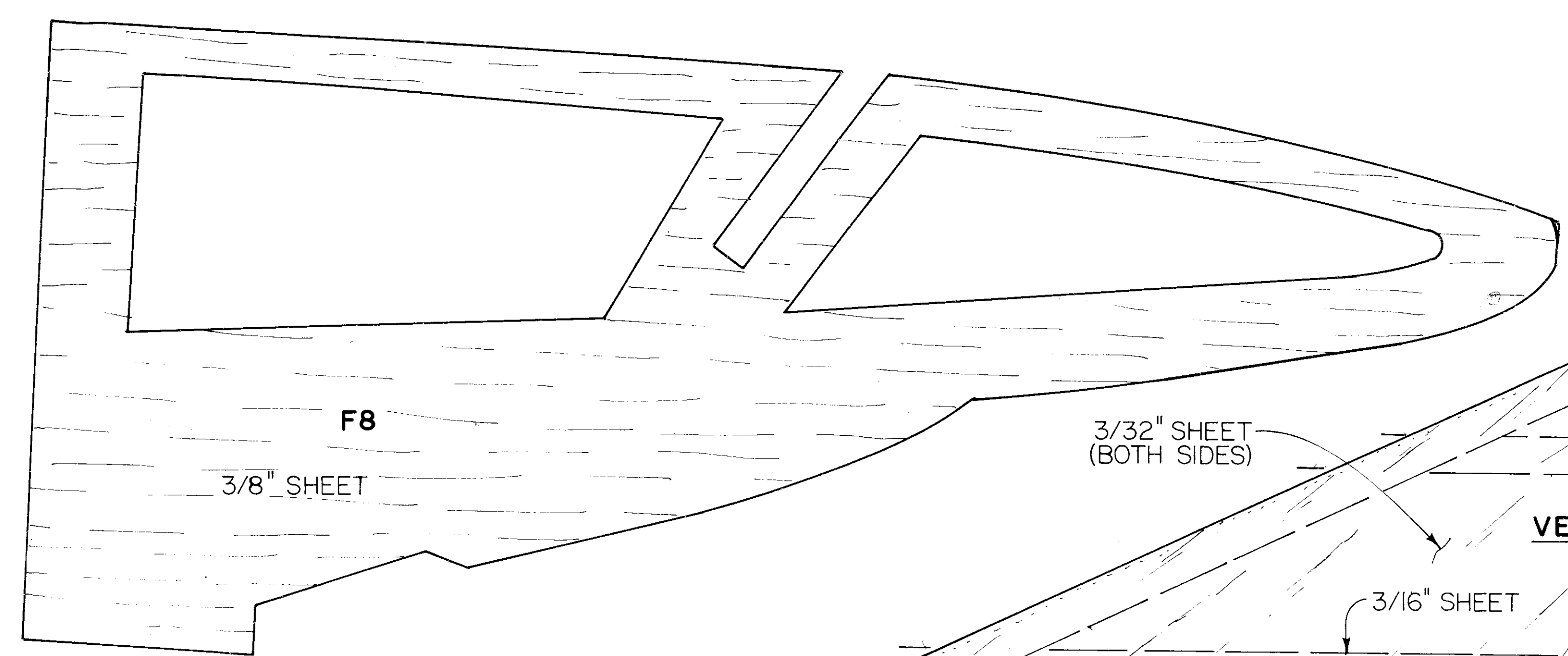
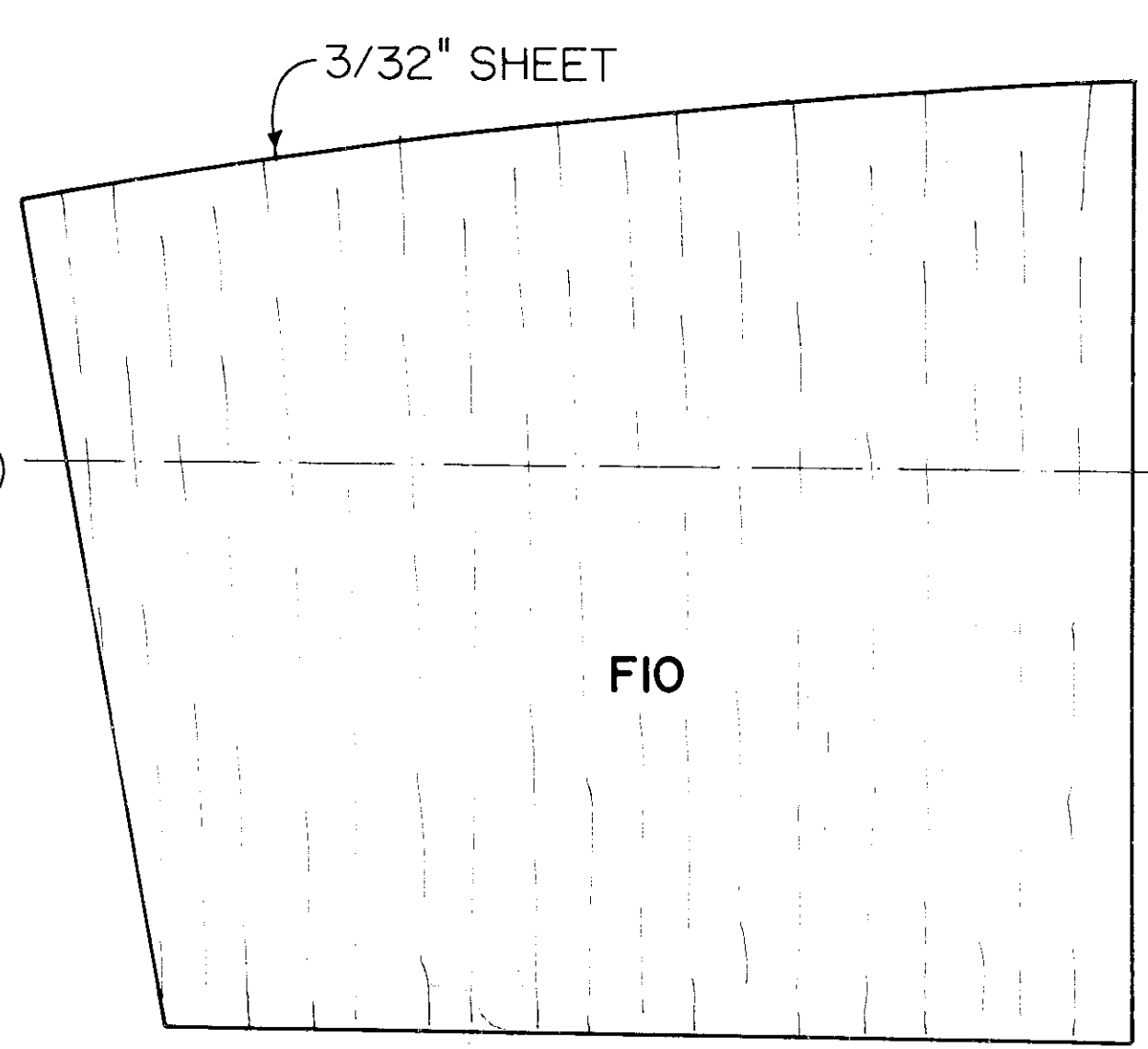
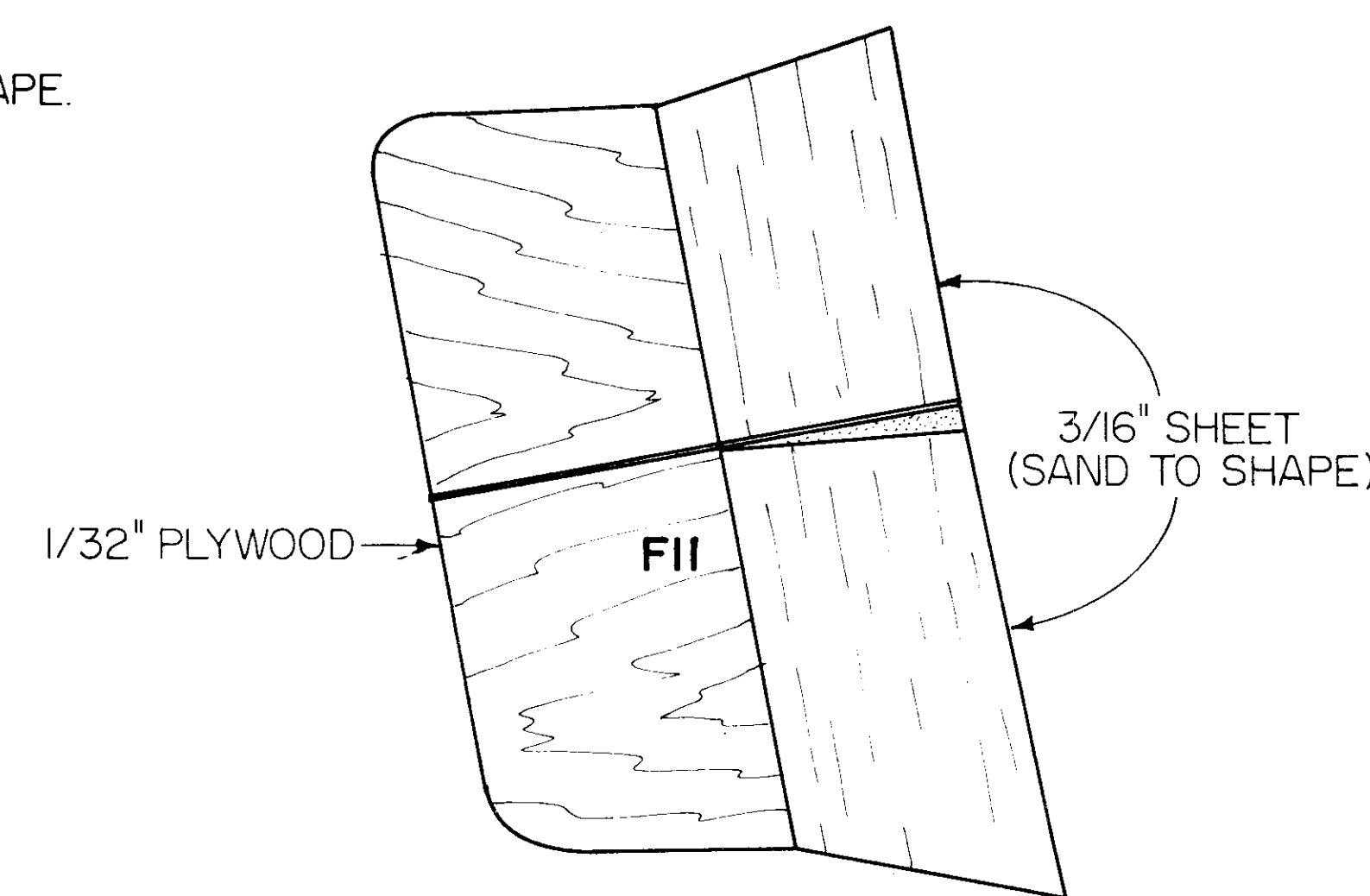
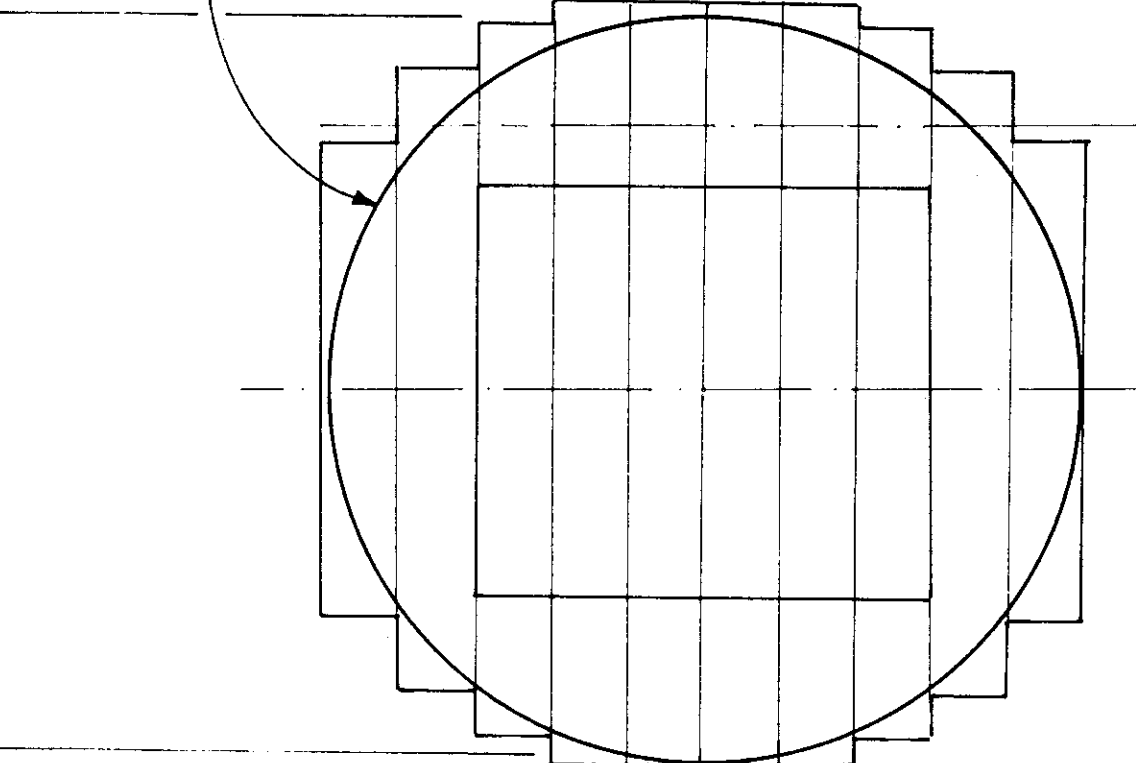
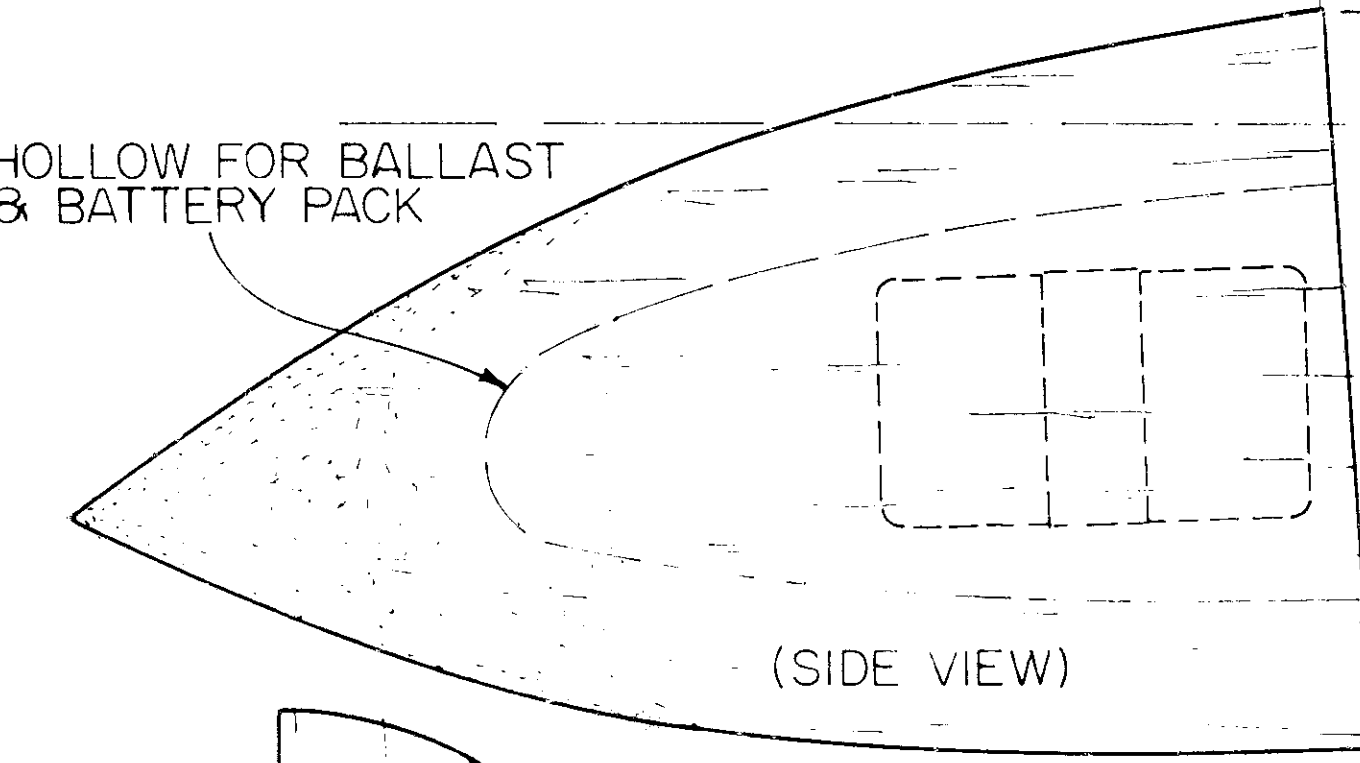
**MCDONNELL DOUGLAS
F-4 PHANTOM**

A 77-81 POWERED DUCTED FAN SPORT SCALE DESIGN
DESIGNED & DRAWN BY PAVEL BOSAK
PLAN ADAPTATIONS BY *Bob Wallace*



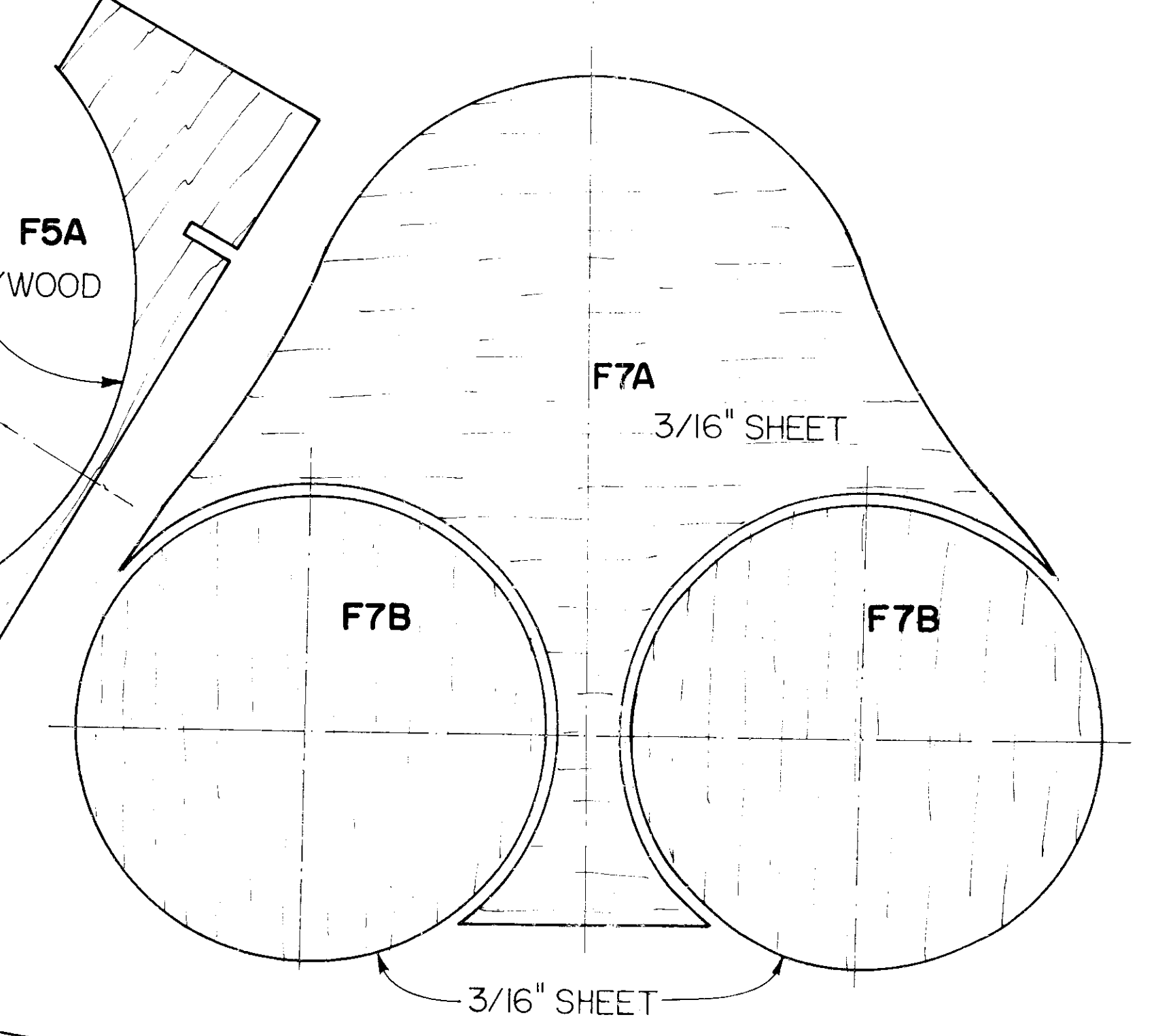
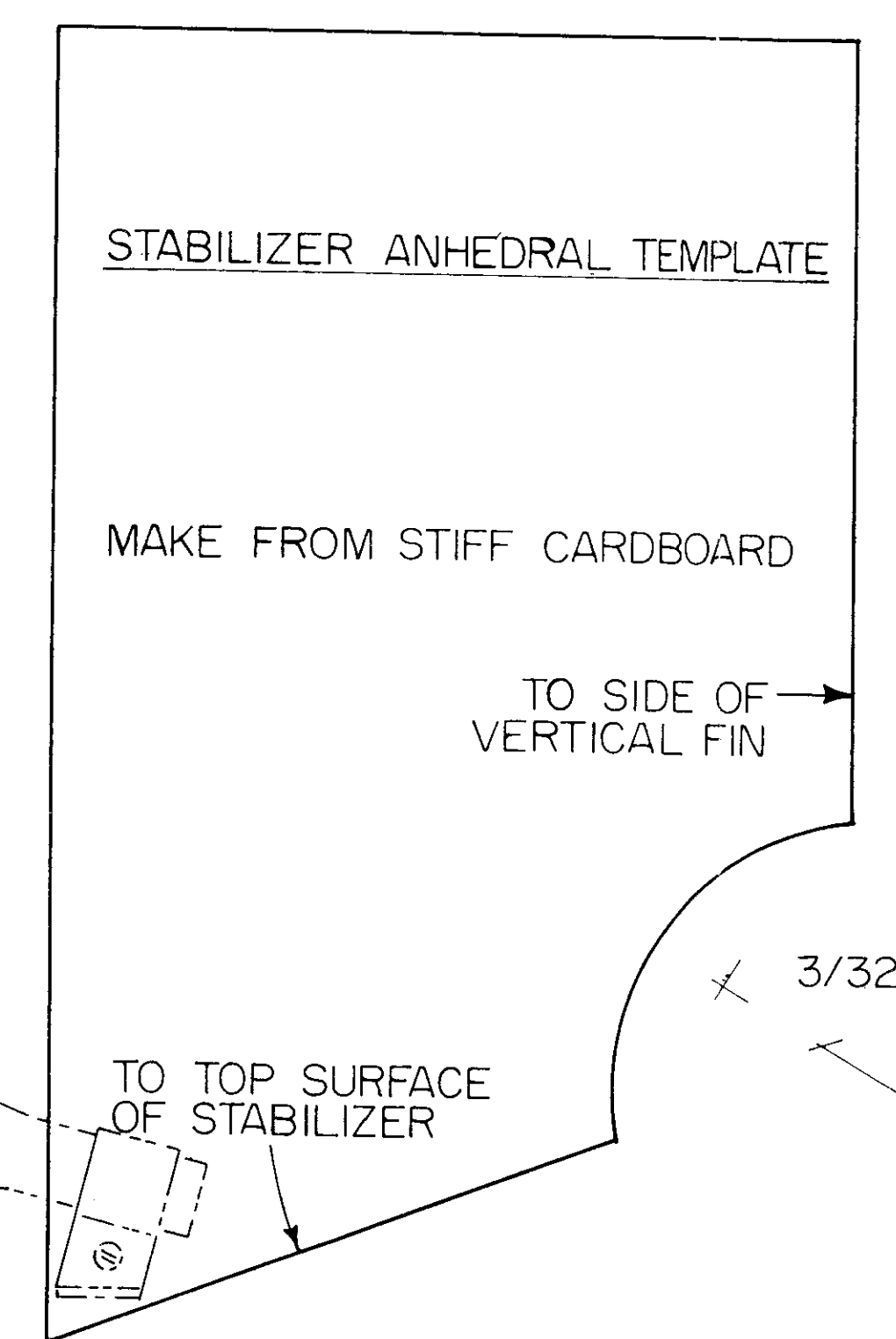
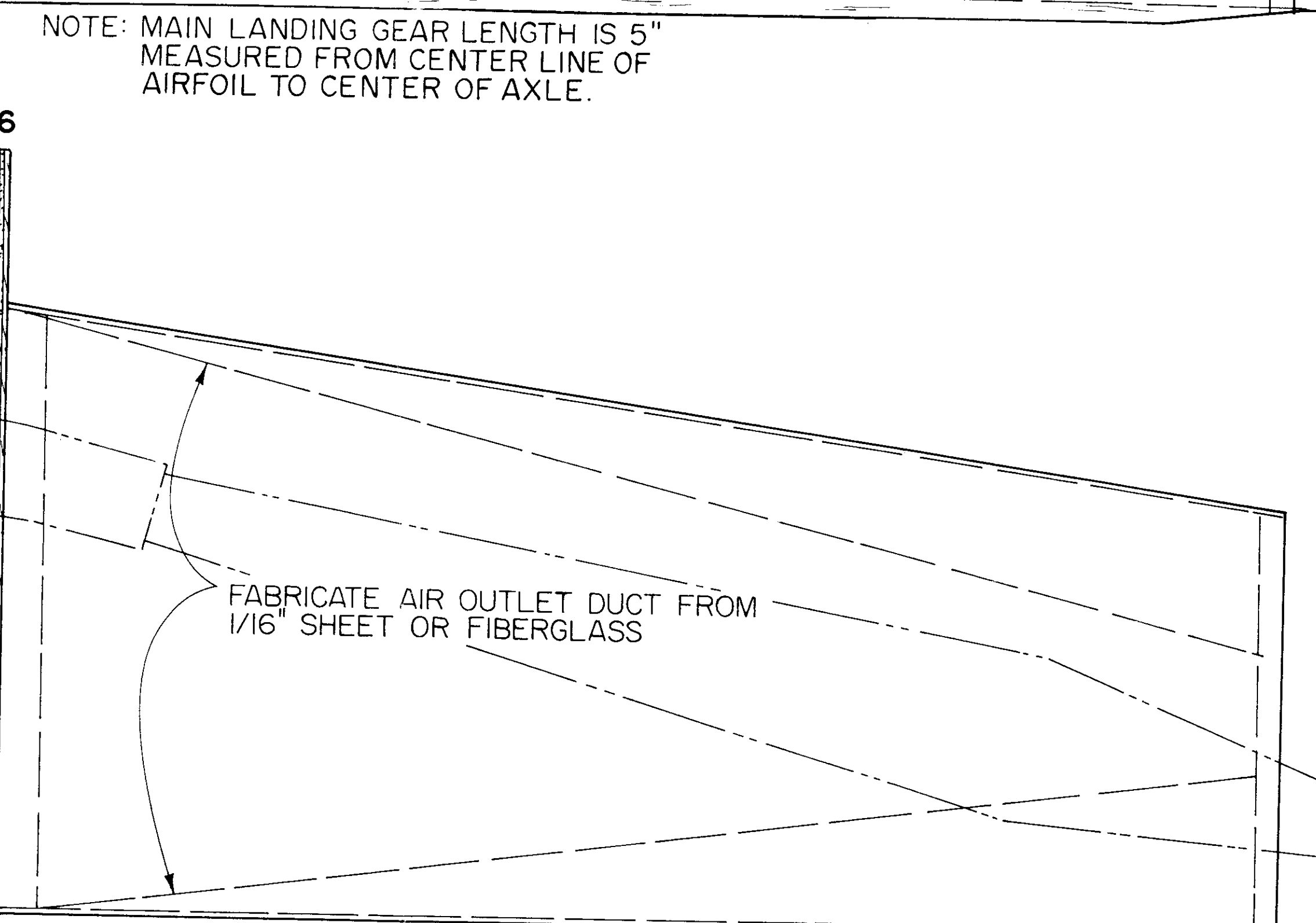
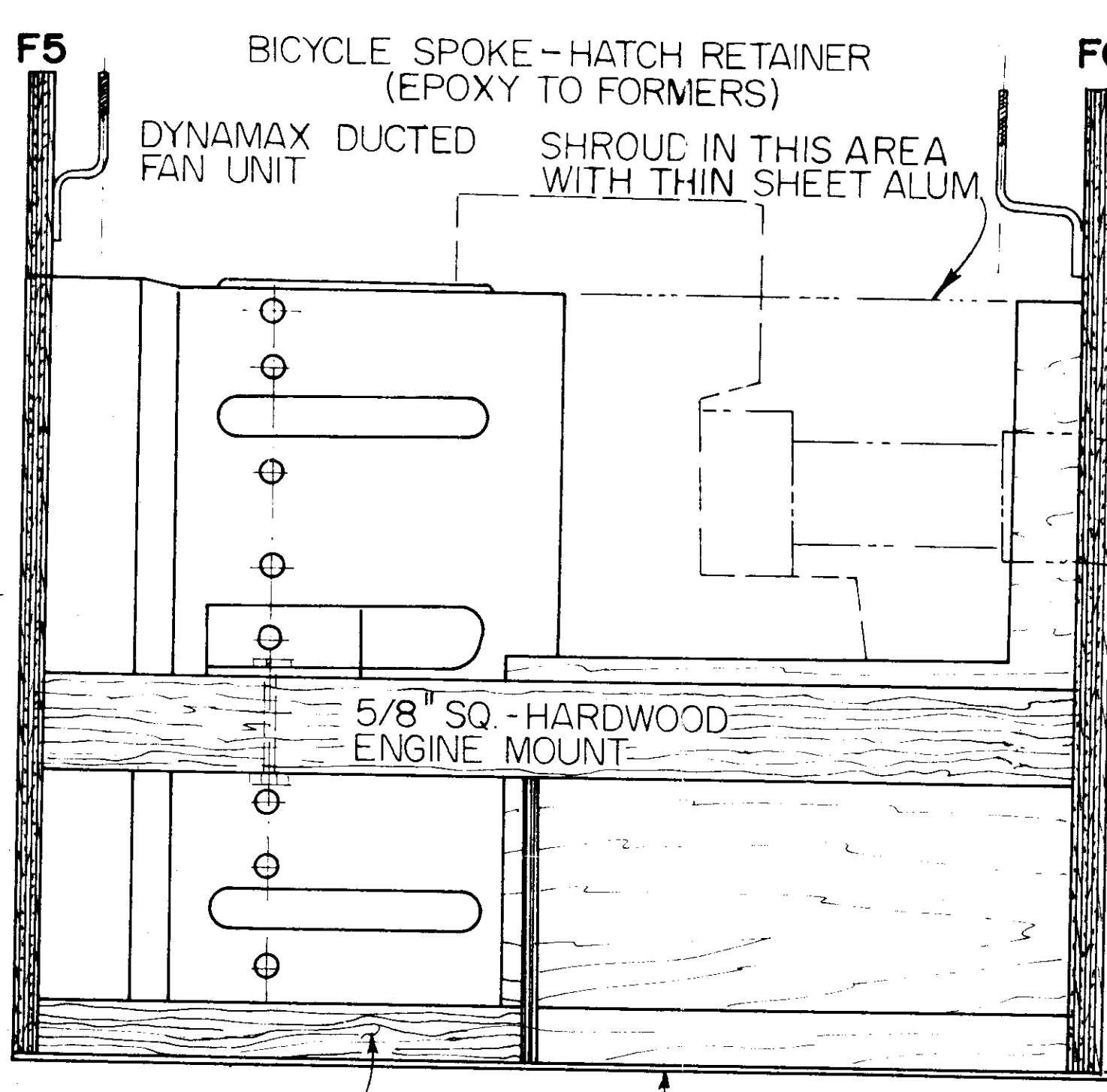
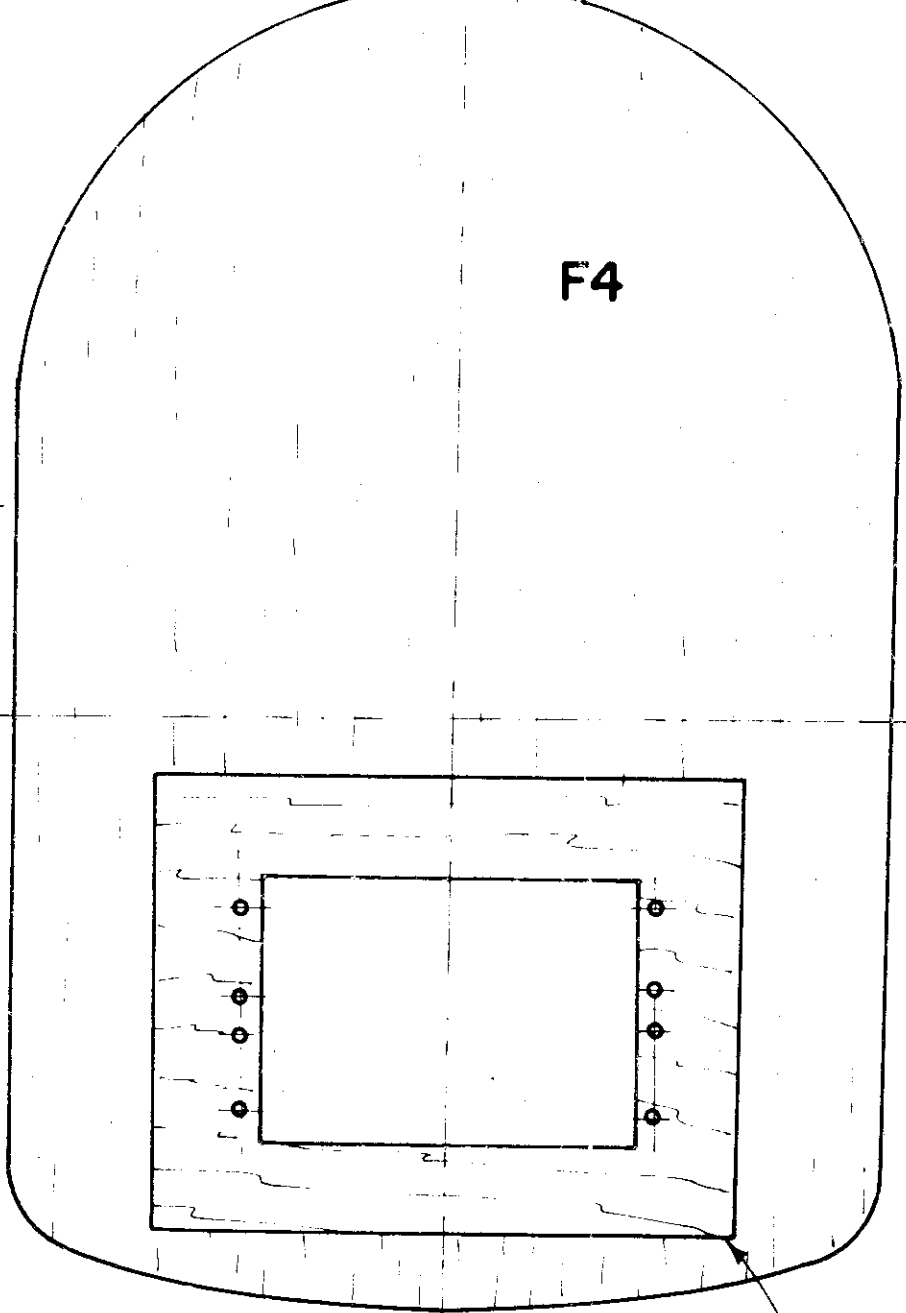
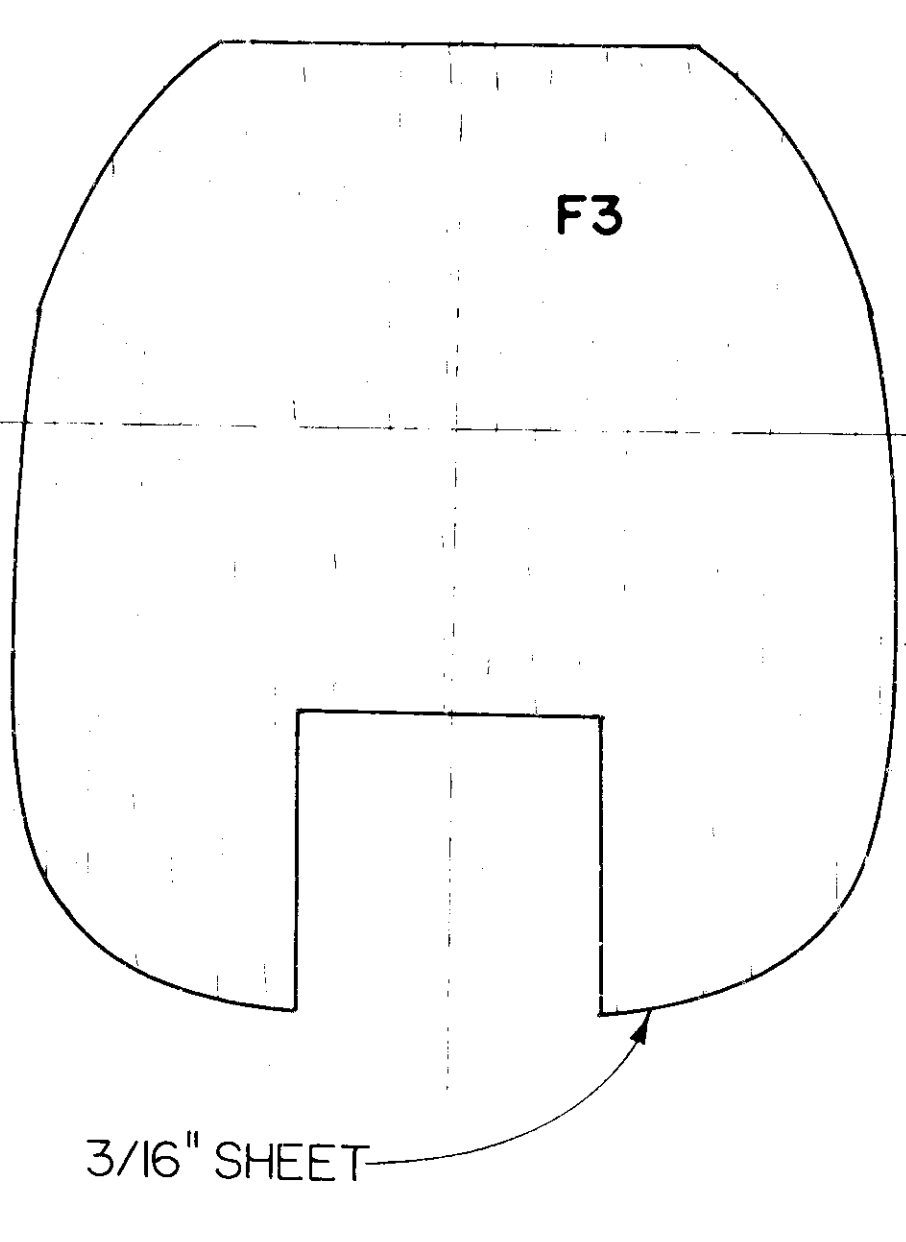
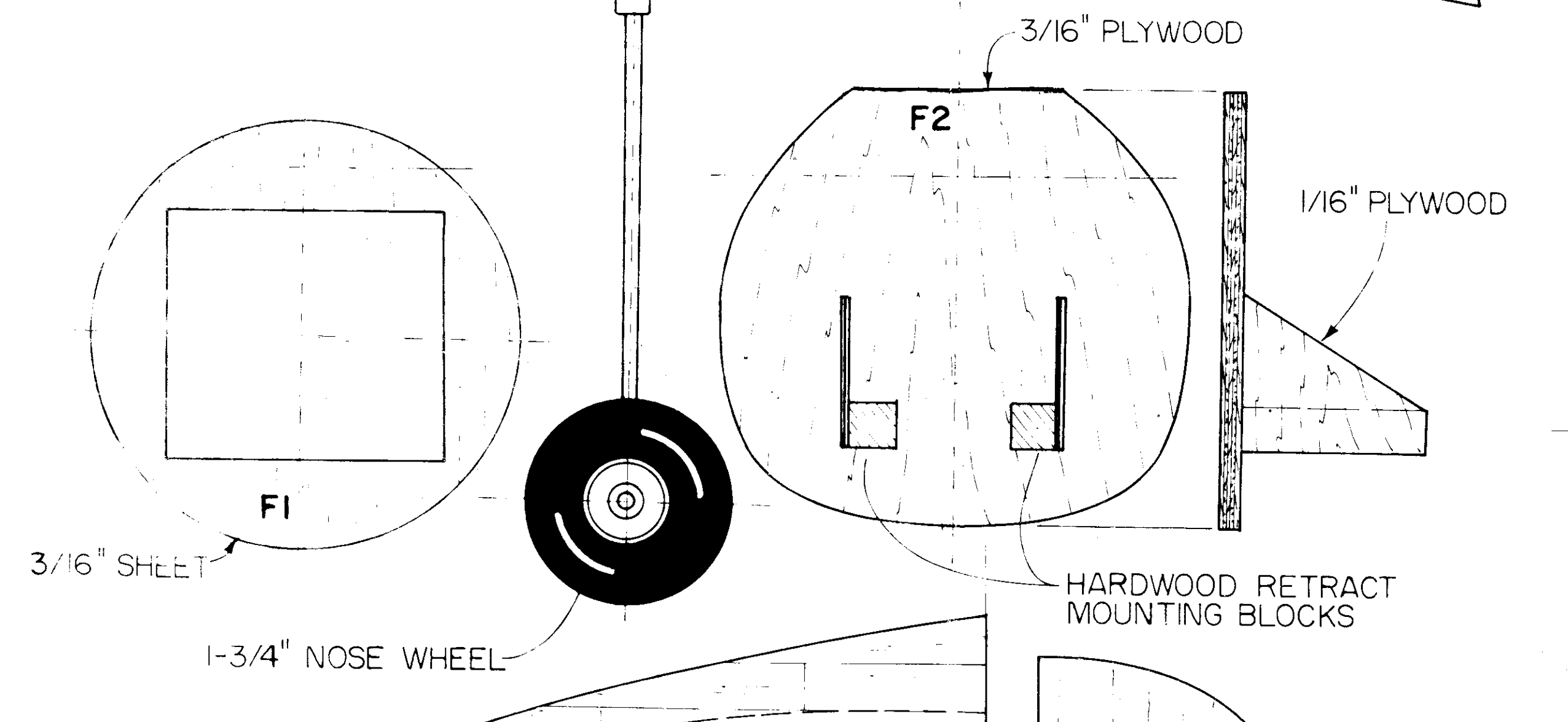
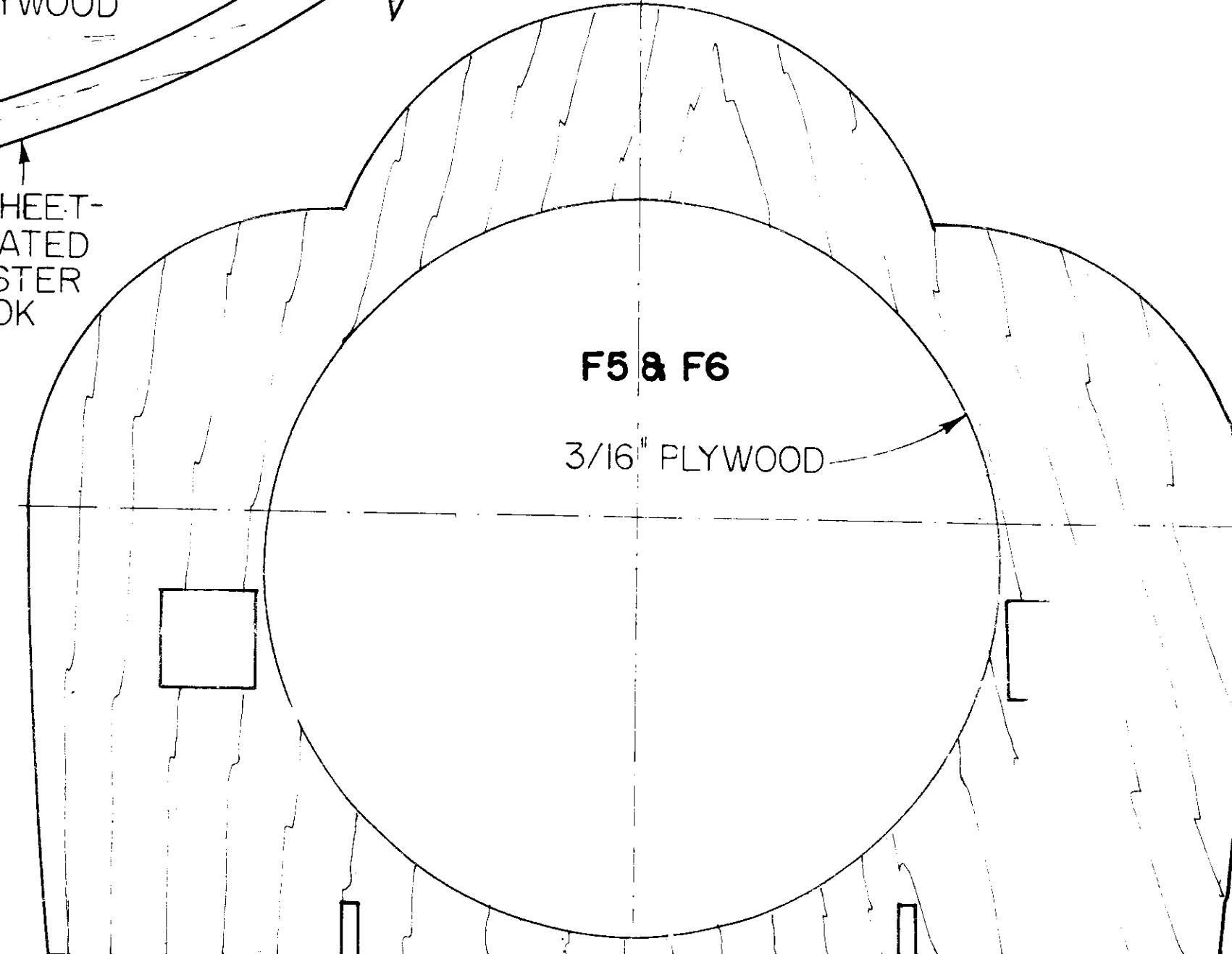
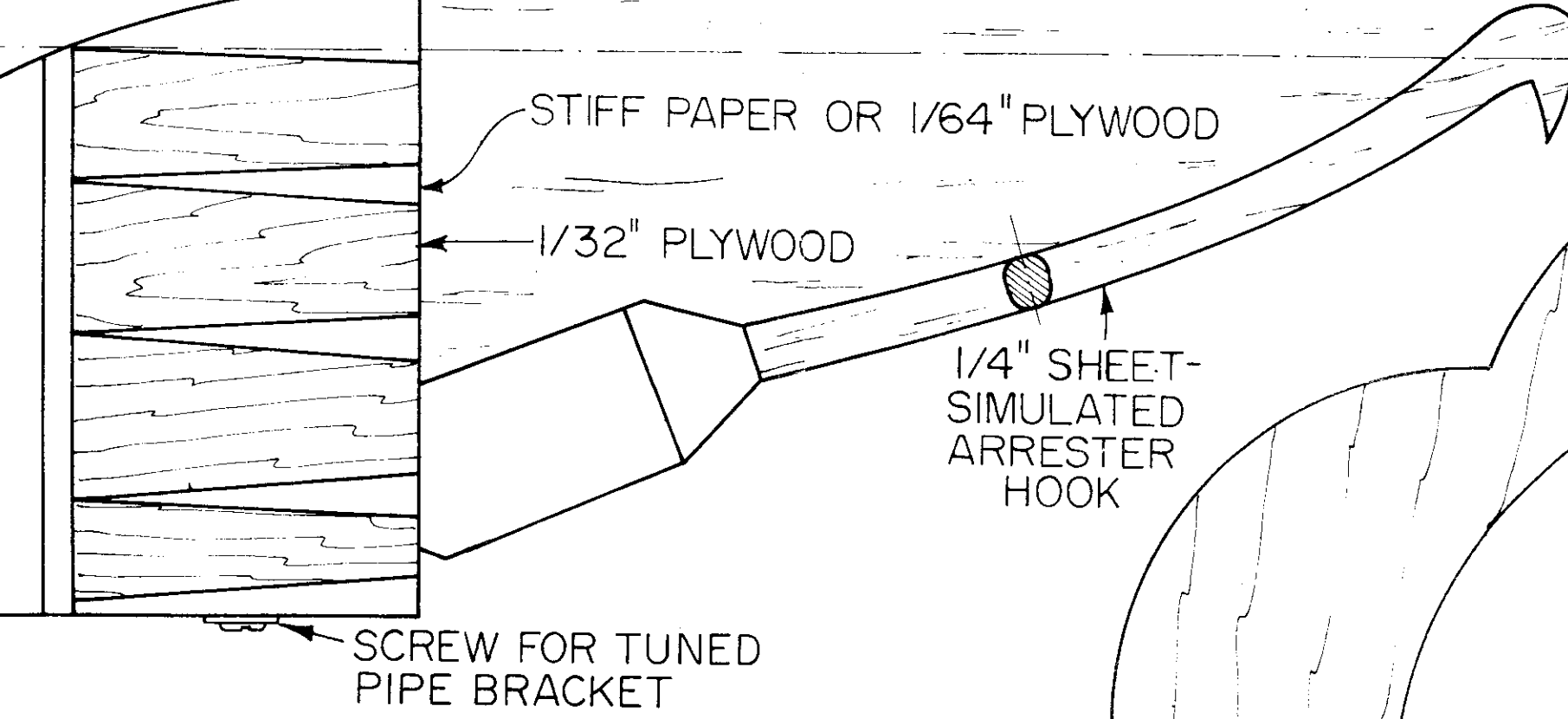
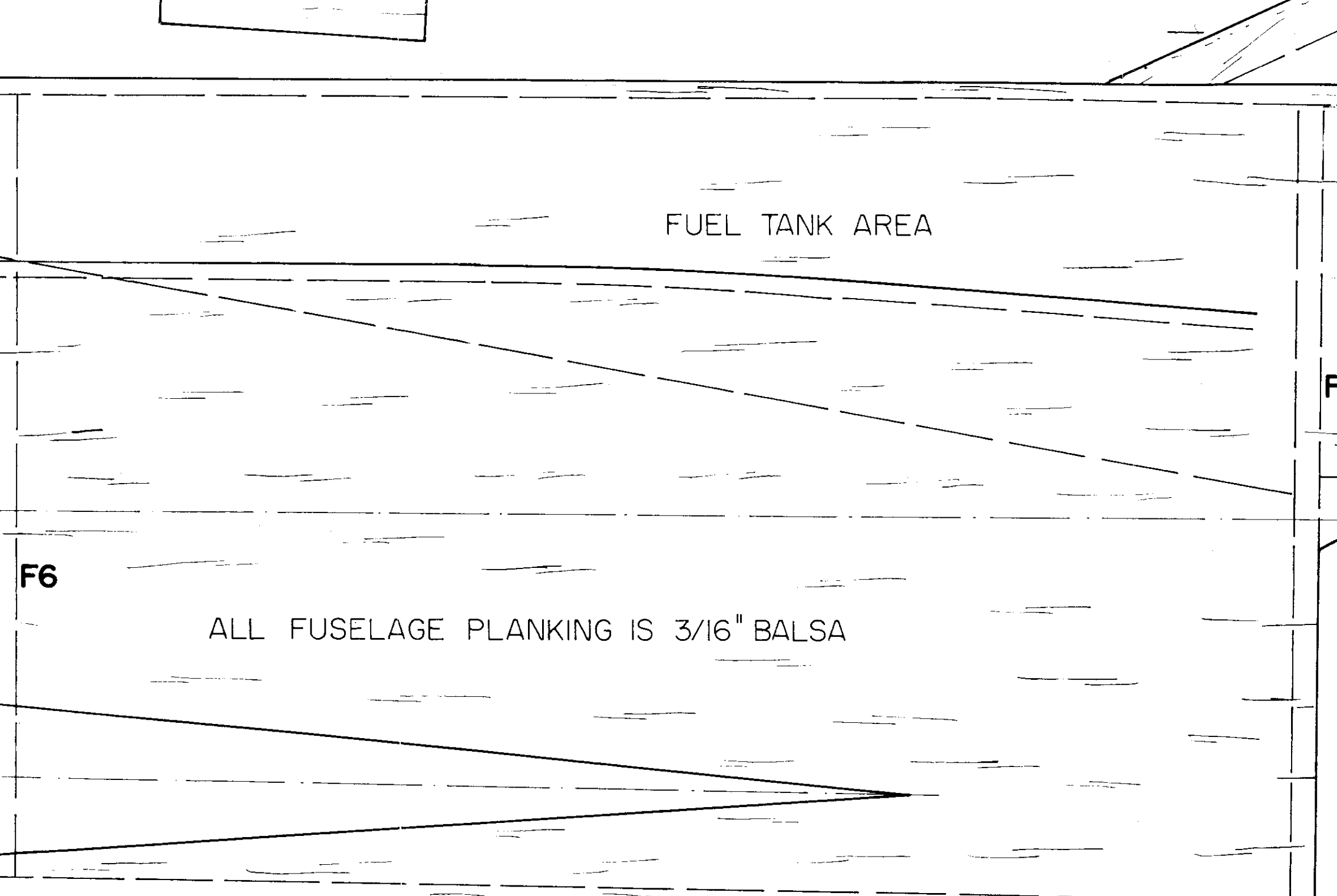
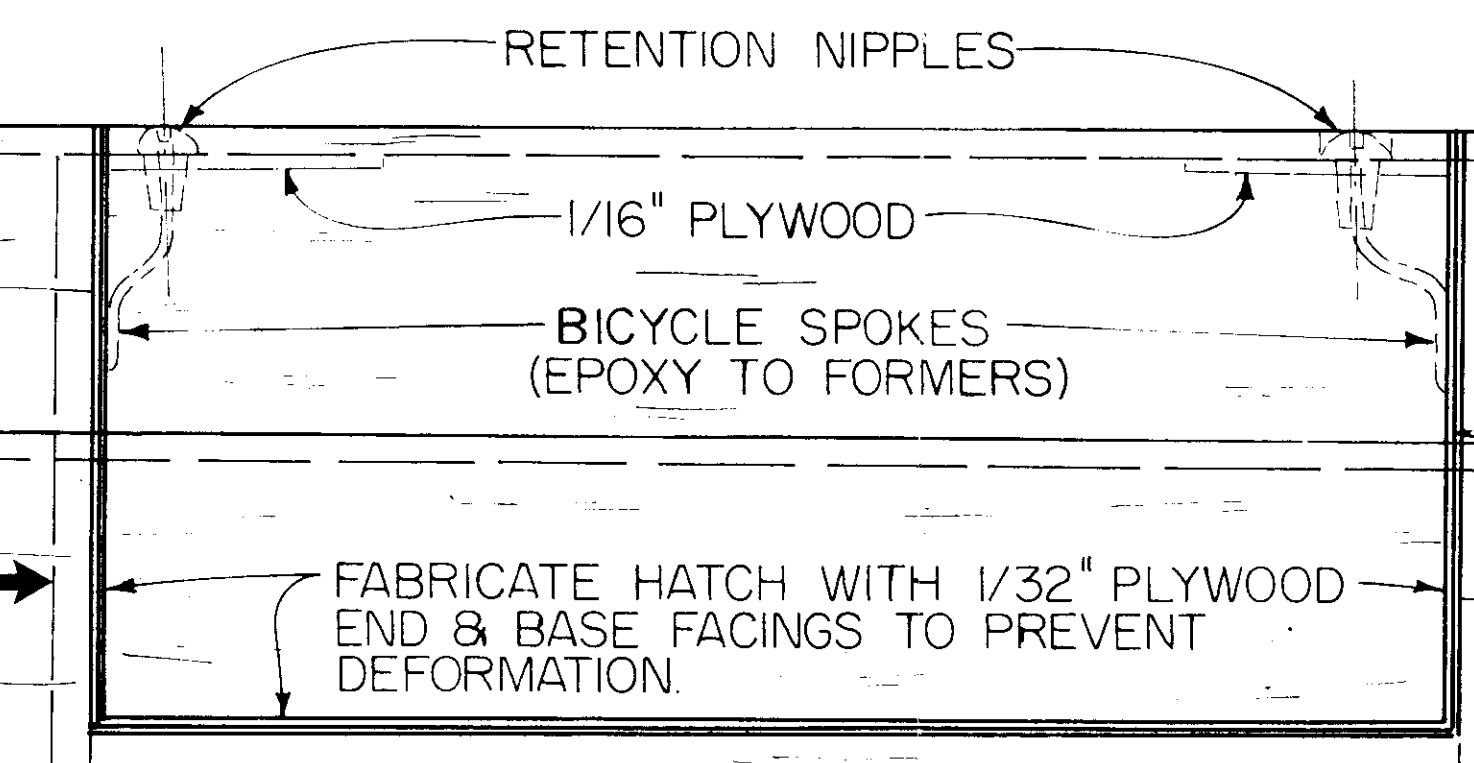
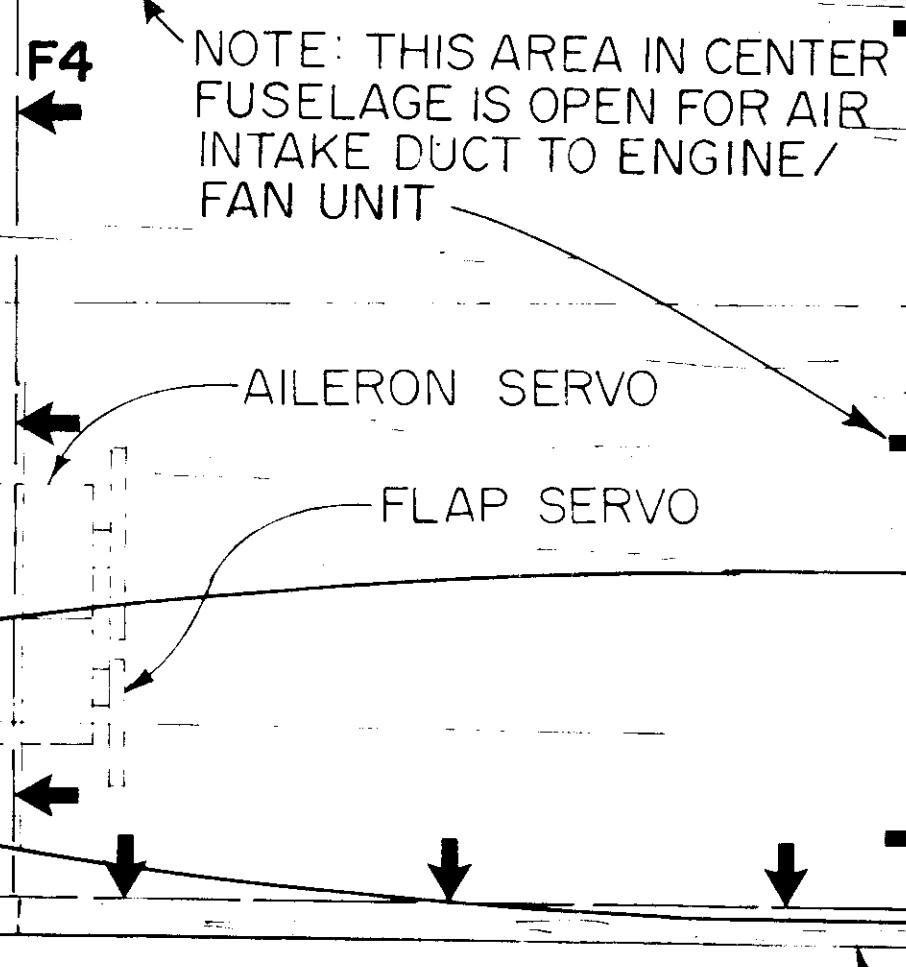
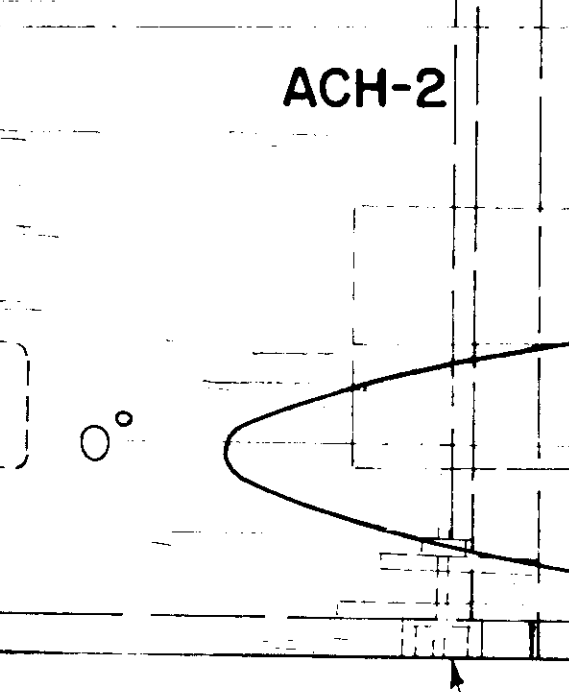
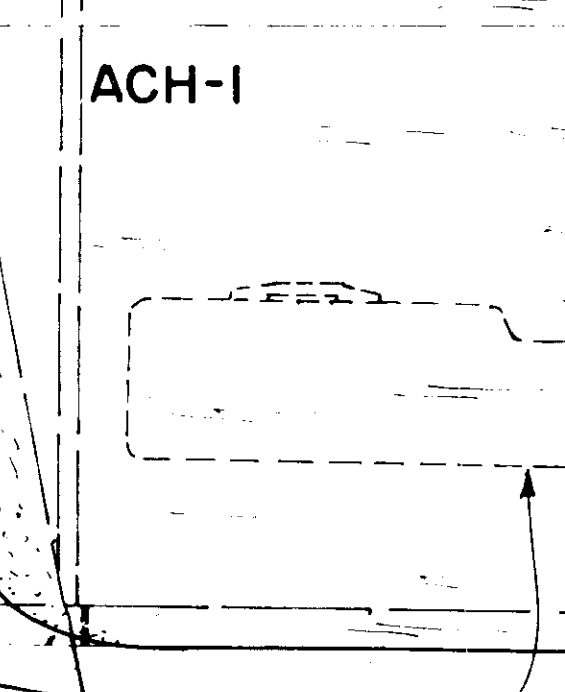
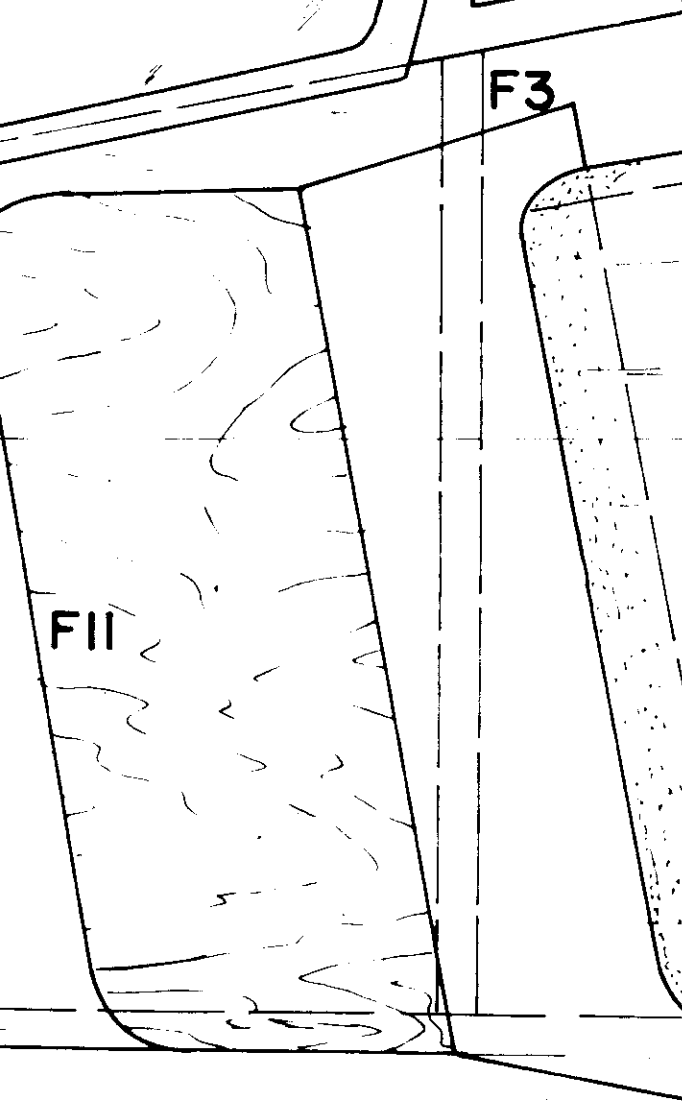
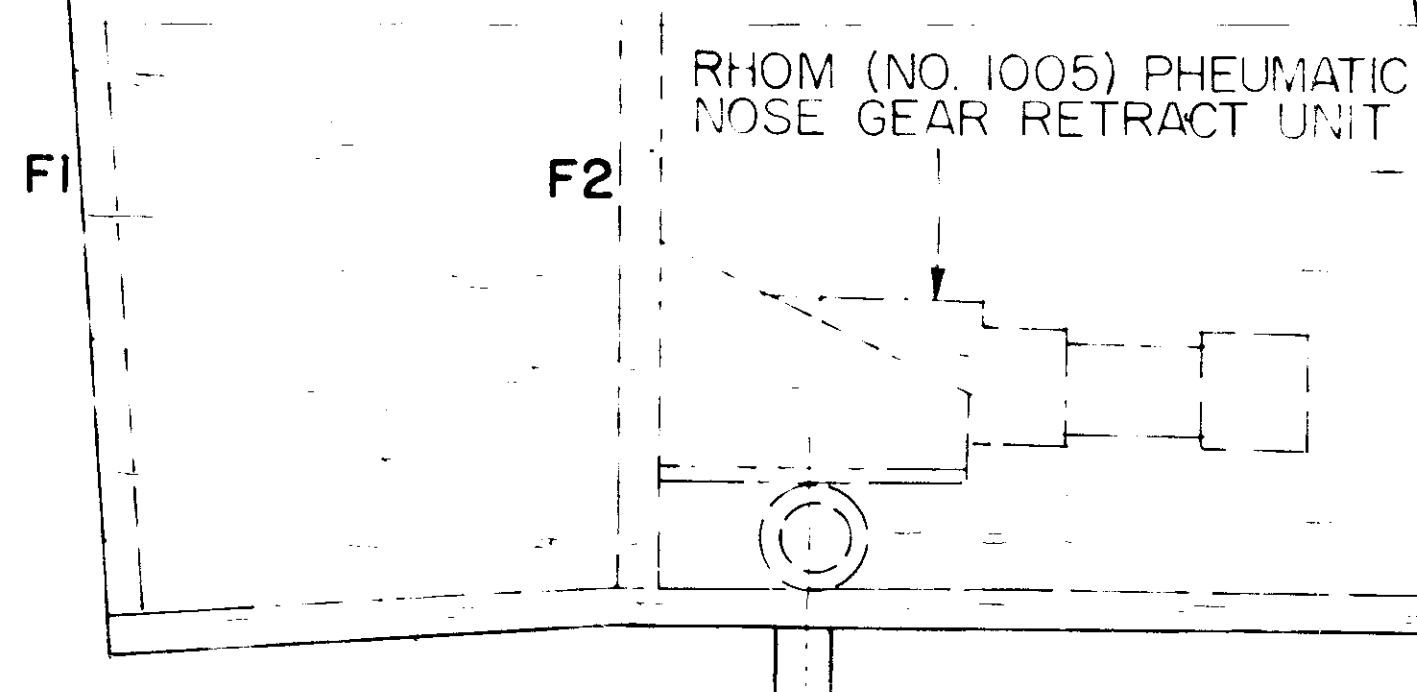
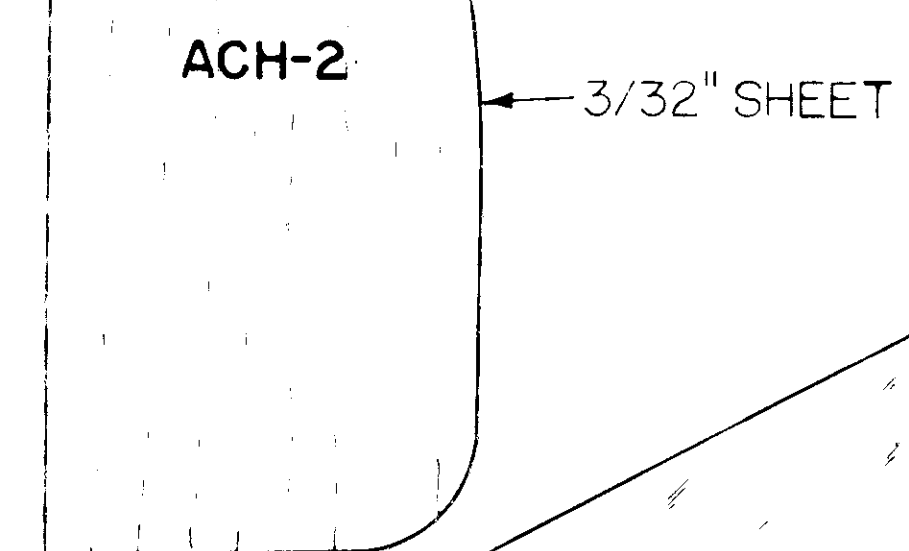
(SEE BELOW FOR NOSE CONE TOP VIEW)

CONSTRUCTED FROM LAMINATIONS OF 3/8" SHEET OR THICKER BLOCKS. HOLLOW AS INDICATED FOR BATTERY PACK & BALLAST CARVE & SAND TO SHAPE.

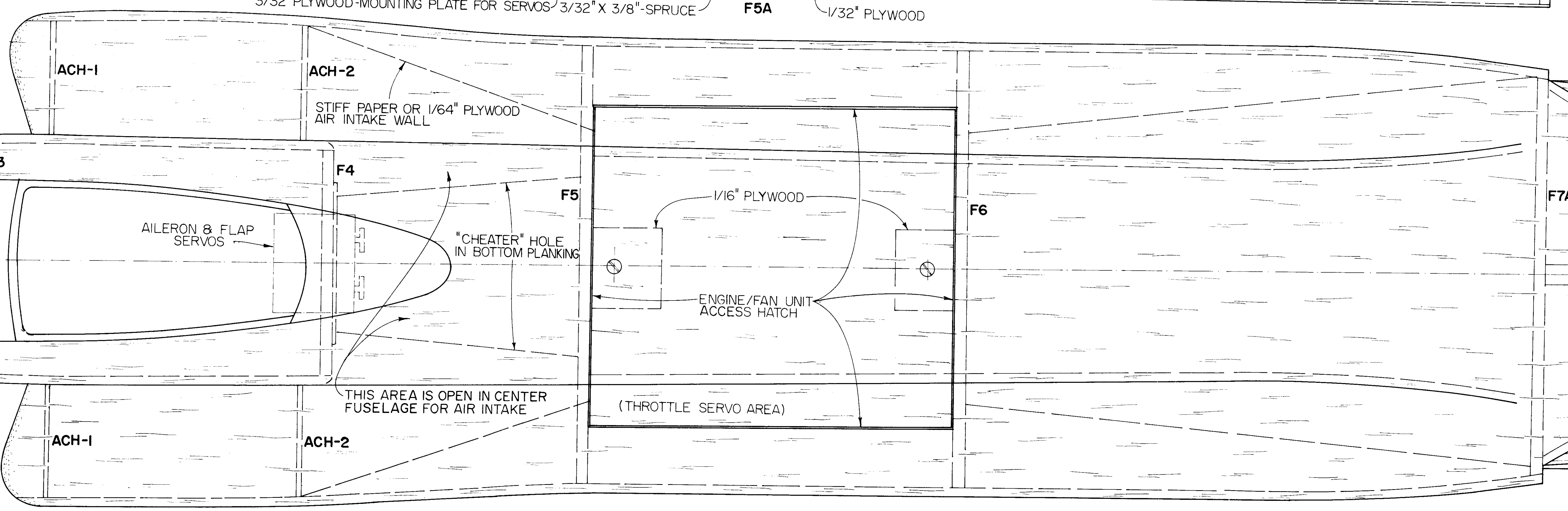
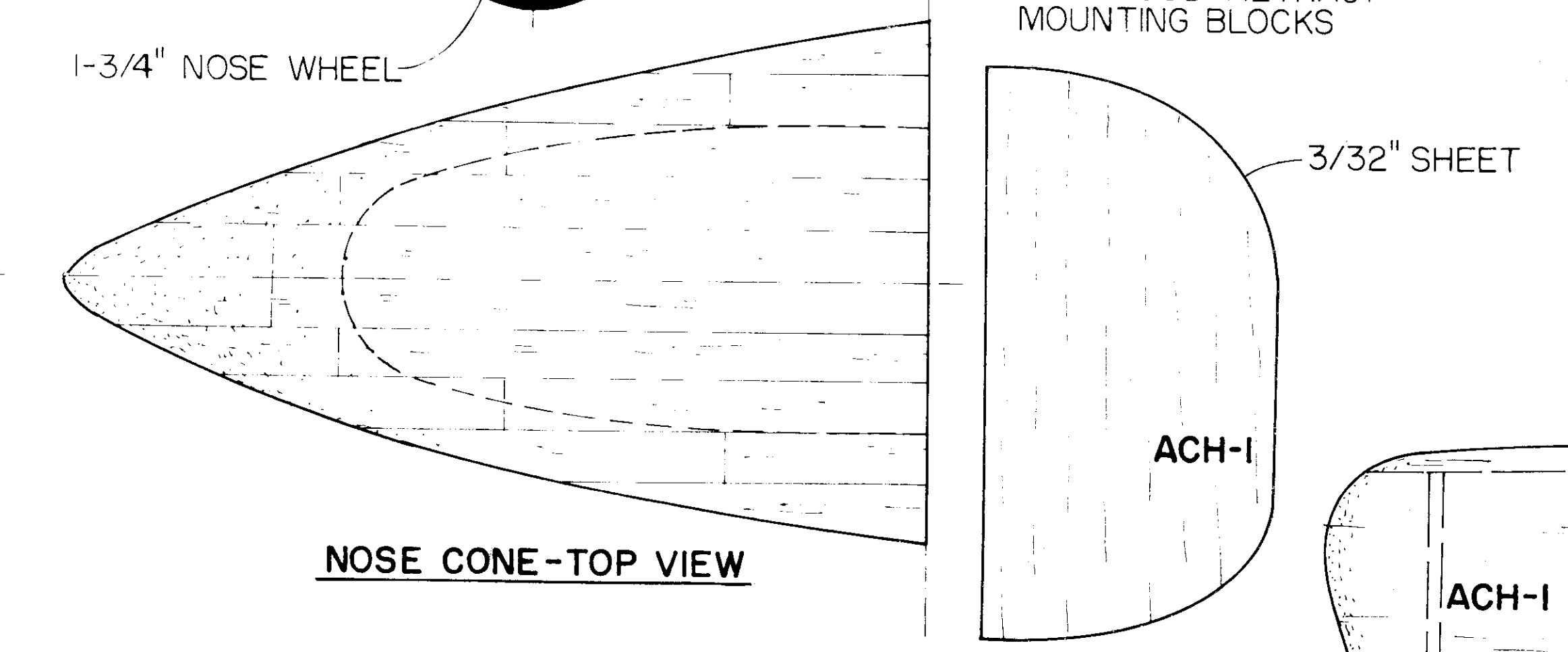


NOSE CONE DETAILS

CANOPY - MOLD FROM CLEAR BUTYRATE PLASTIC SHEET OR MODIFY COMMERCIALY AVAILABLE CANOPY



NOSE CONE-TOP VIEW



NOTES

- 1 ALL WOOD IS BALSA, UNLESS NOTED OTHERWISE.
- 2 THESE PLAN SHEETS WERE DRAWN USING METRIC DIMENSIONS AS A RESULT, SLIGHT VARIATIONS WILL BE EVIDENT DUE TO THE CONVERSION TO "INCH" SIZES, FOR THE VARIOUS WOOD COMPONENTS.



MCDONNELL DOUGLAS F-4 PHANTOM

A 77-81 POWERED DUCTED FAN SPORT SCALE DESIGN
DESIGNED & DRAWN BY PAVEL BOSAK
PLAN ADAPTATIONS BY Bob Wallace