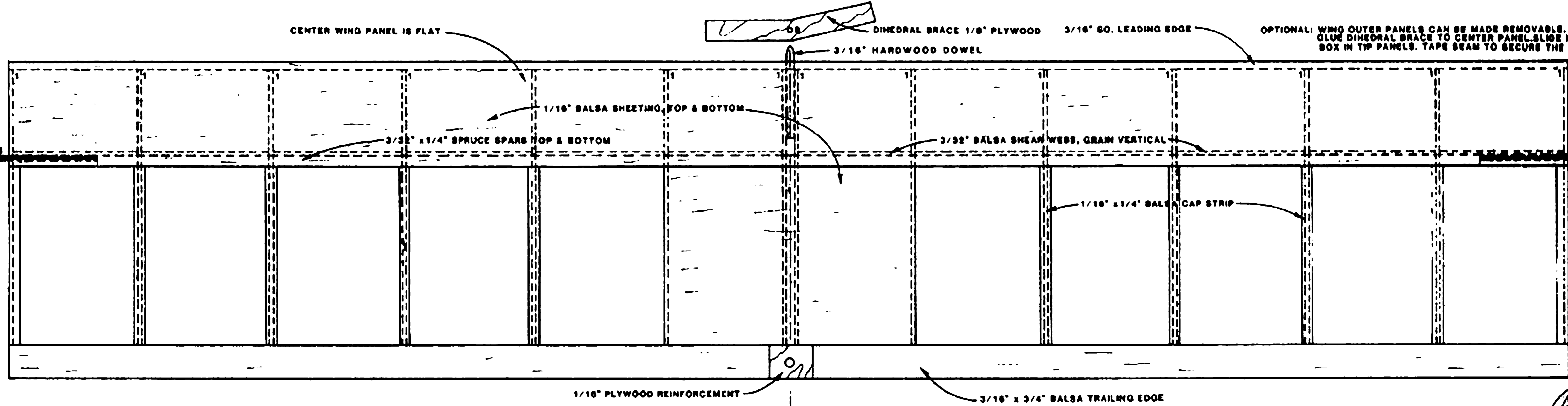
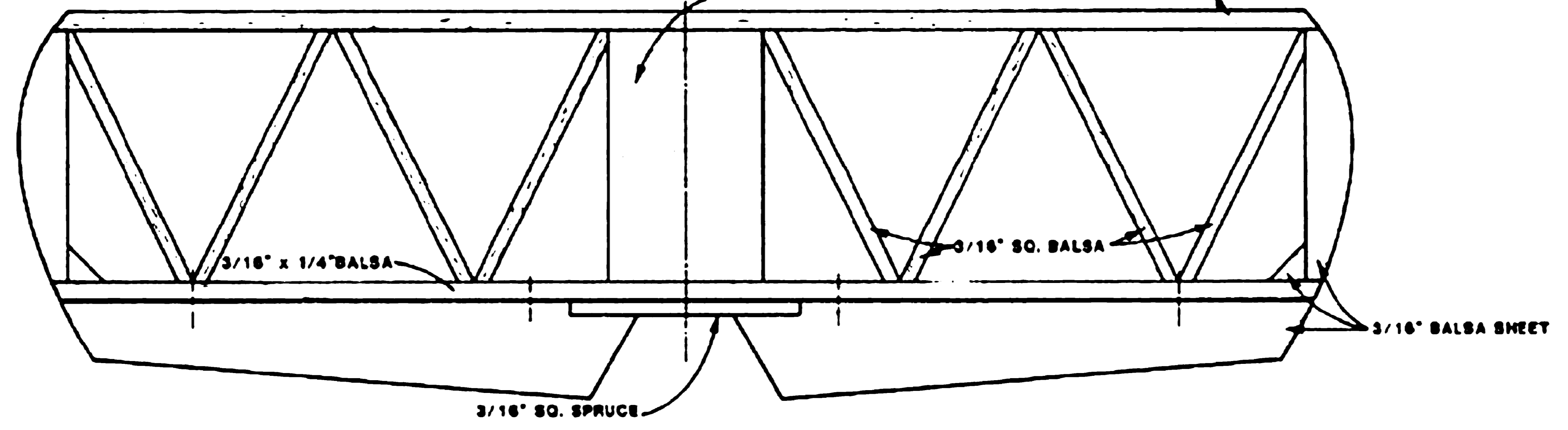
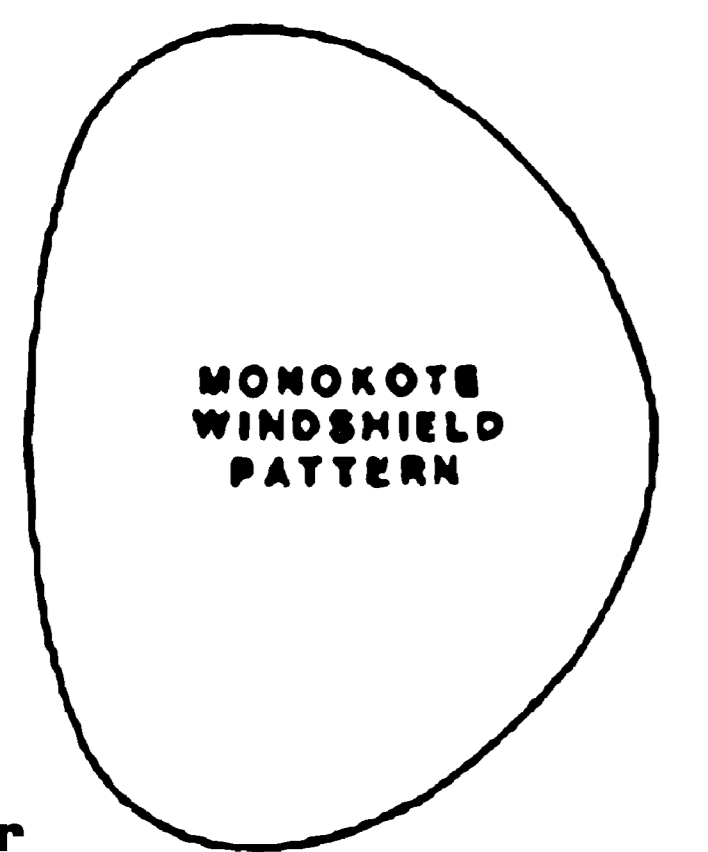
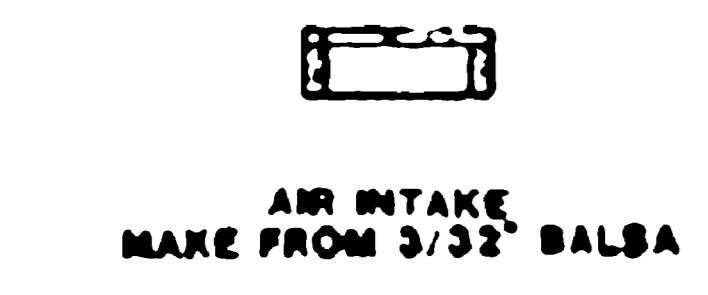
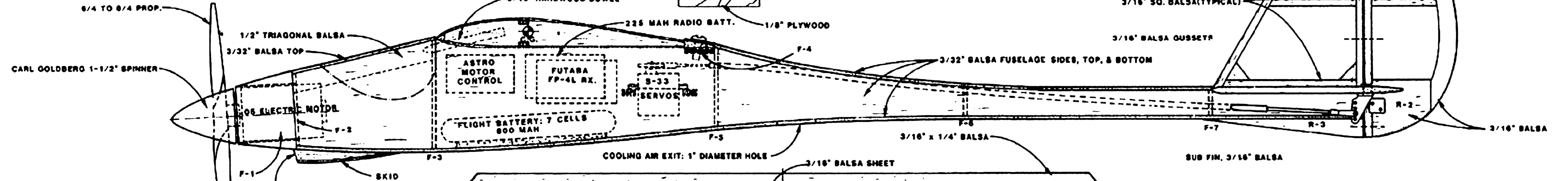
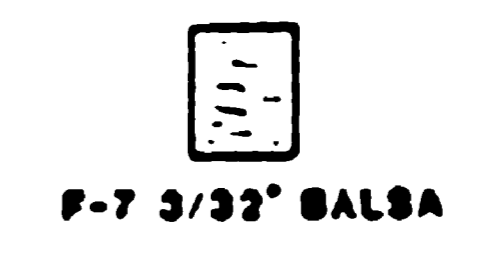
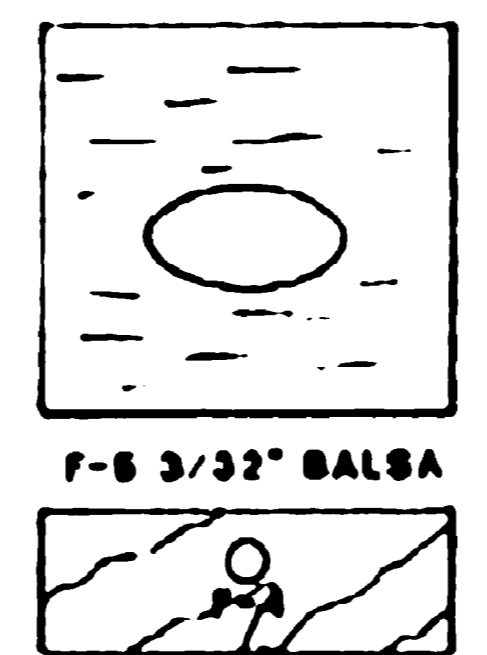
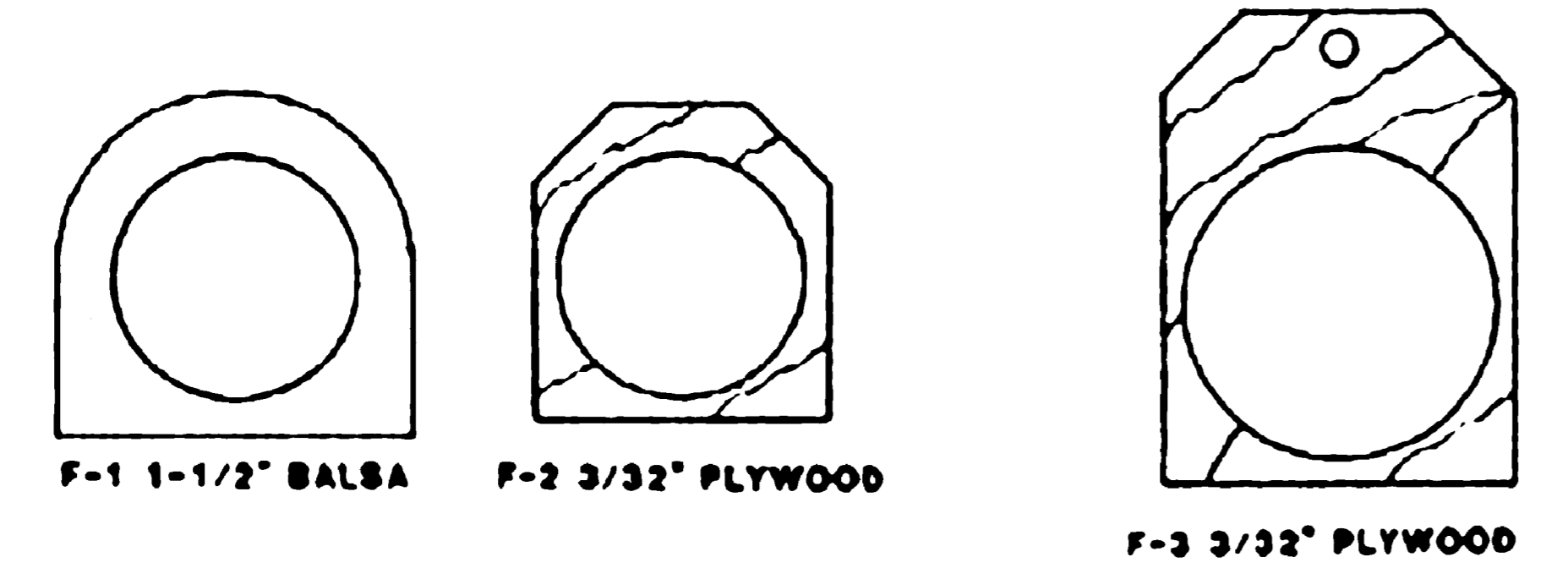


ALL WING RIBS ARE 3/32" BALSA



SECTION AA
WING TIP SECTION



WEIGHT: 35 OZ. R.T.F.
WING LOADING: 10 OZ./SQ. FT.



ELECTRAGLIDE II

JULY, 1984 DESIGNED & DRAWN BY JIM ZAREBSKI

