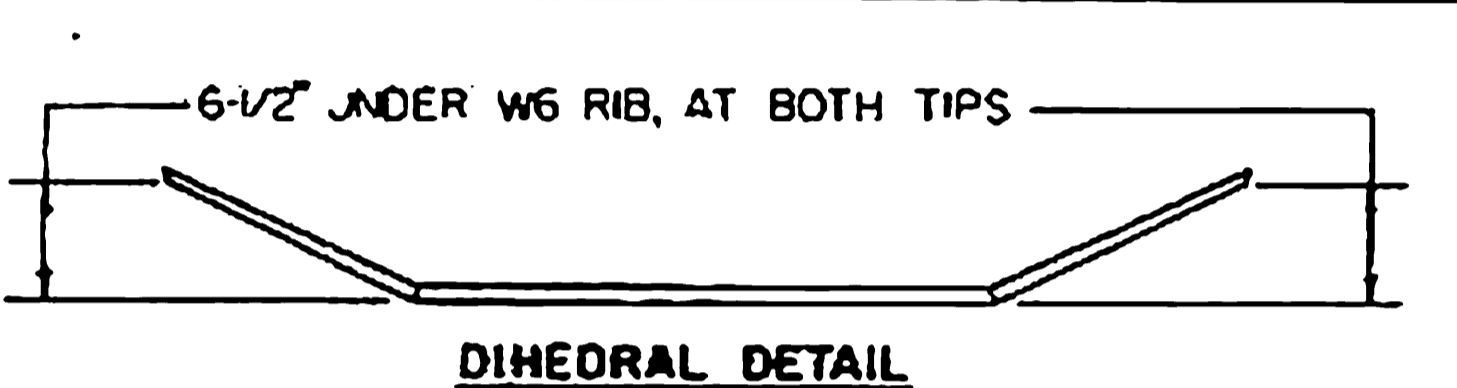
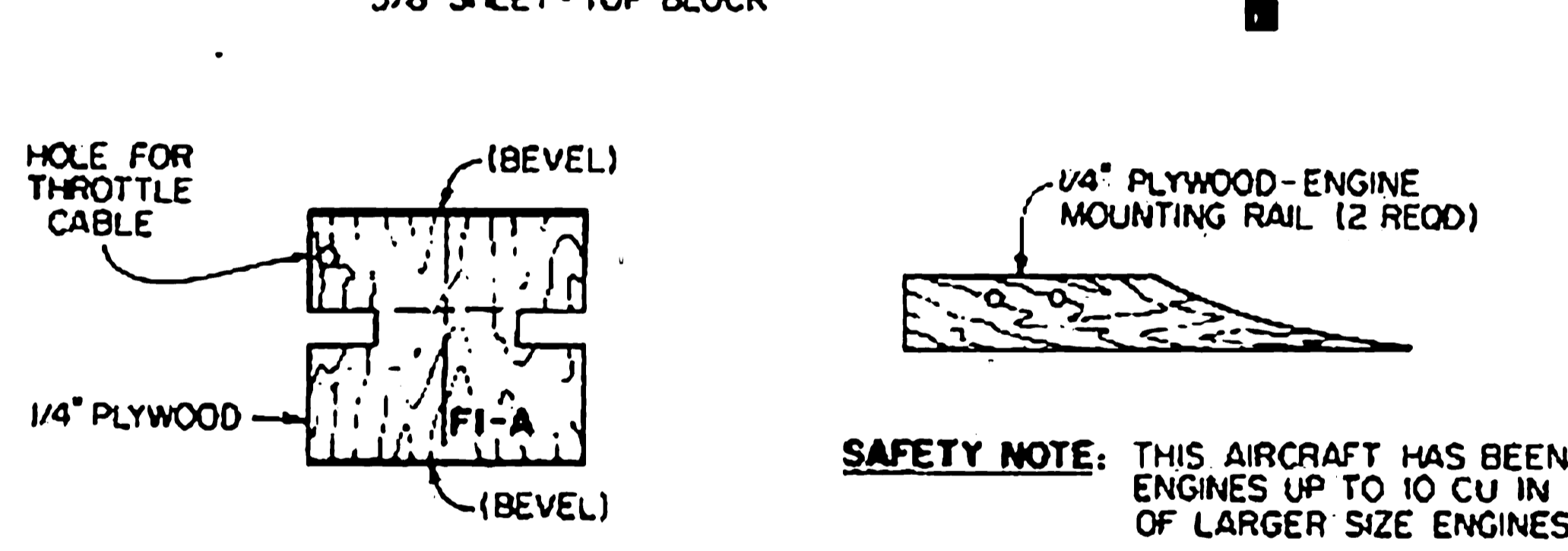
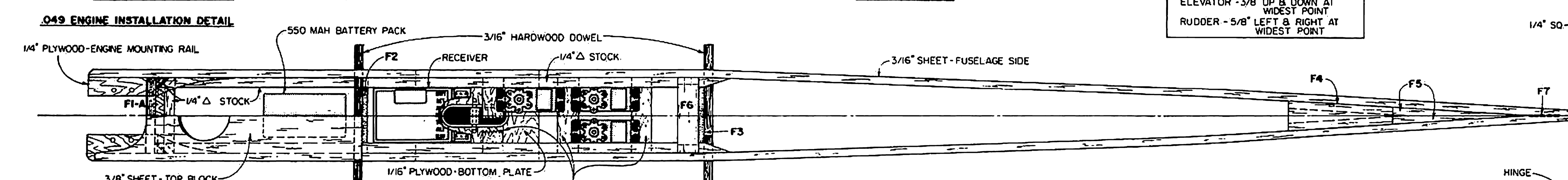


NOTE: FOR 049 POWERED VERSION, MAKE FORMERS F2 & F3 1/8" WIDER TO ACCOMMODATE 1/8" SHEET FUSELAGE SIDES. F4 & F6 MUST BE WIDENED 1/8" ALSO.



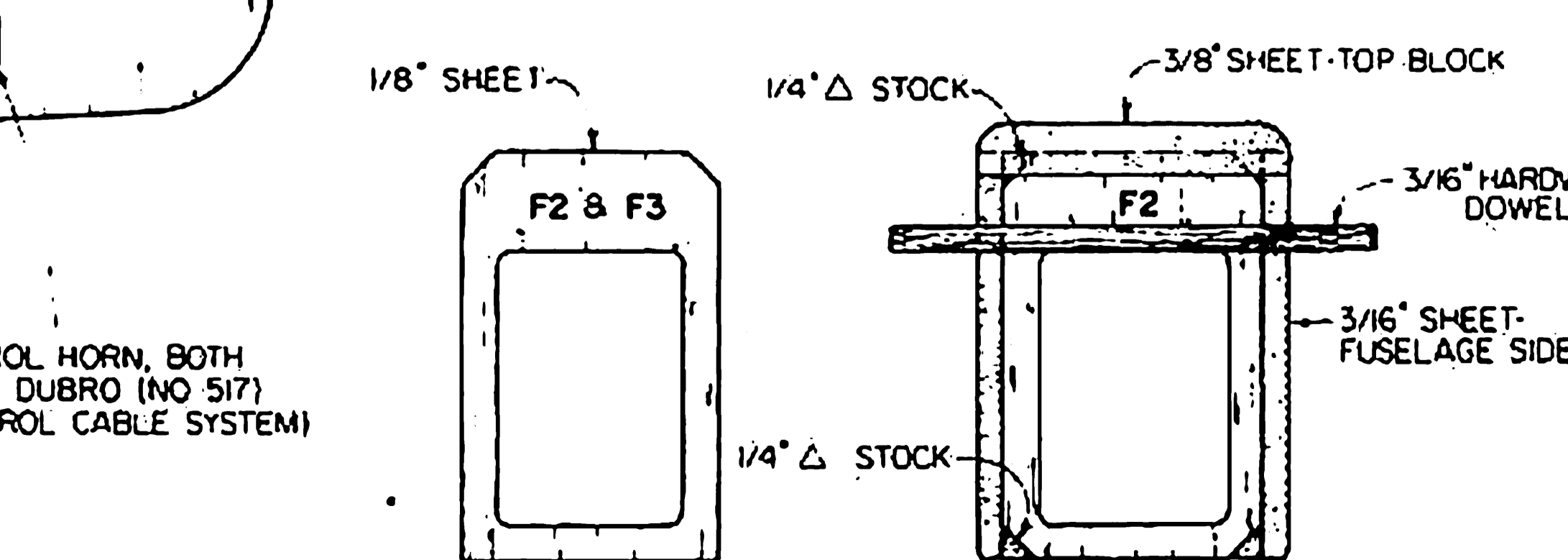
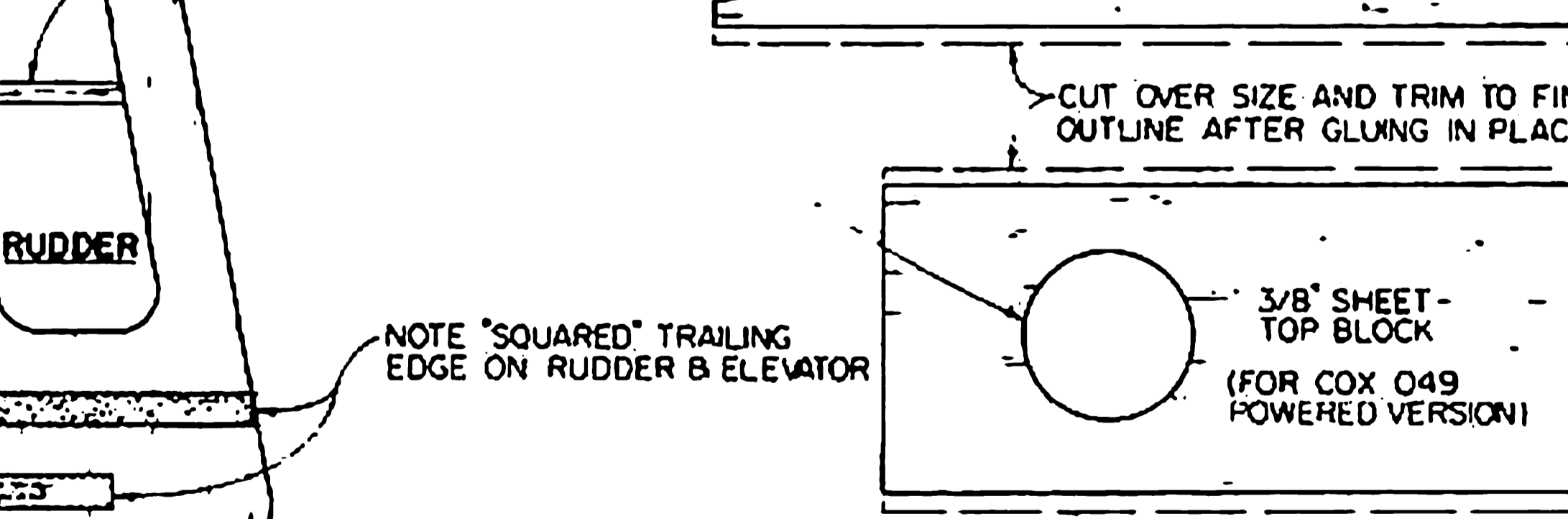
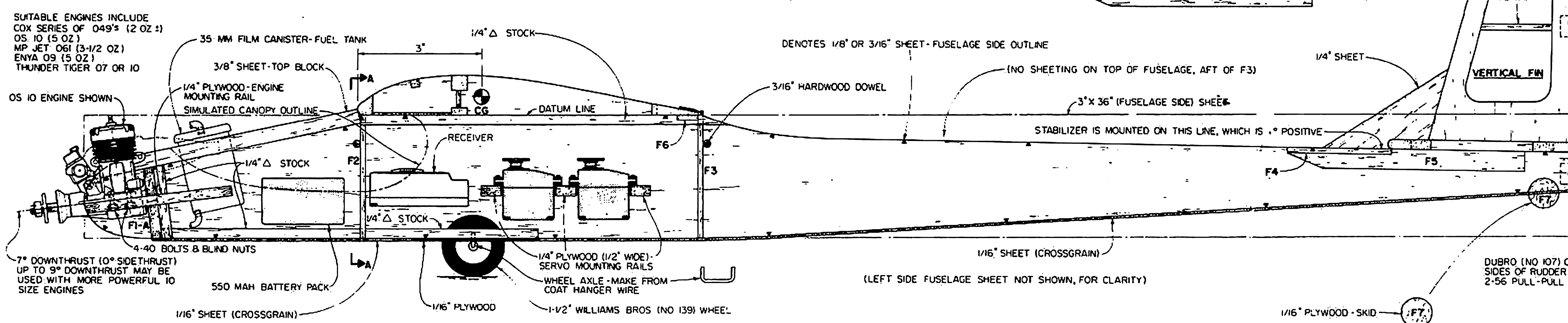
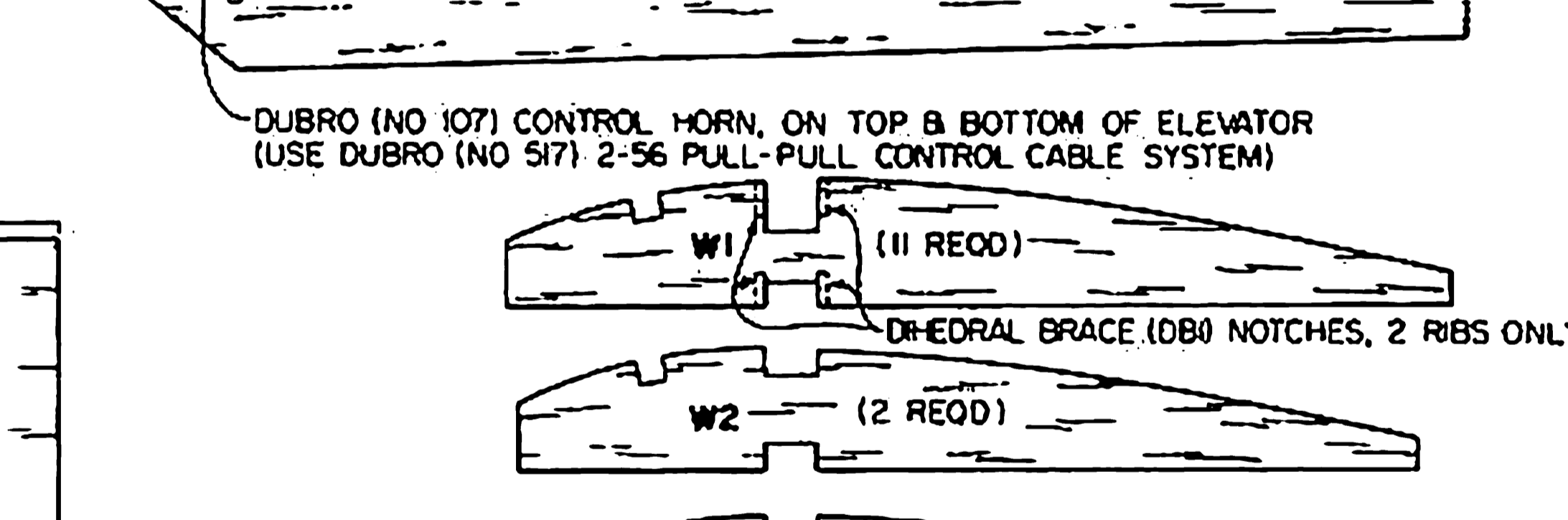
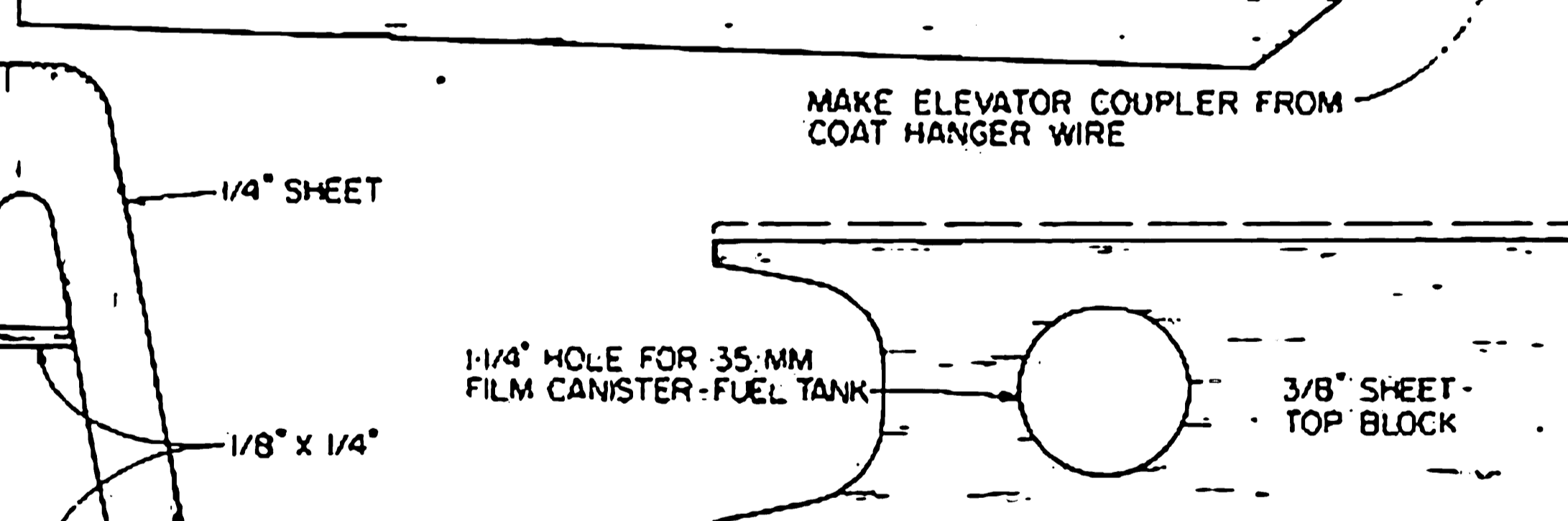
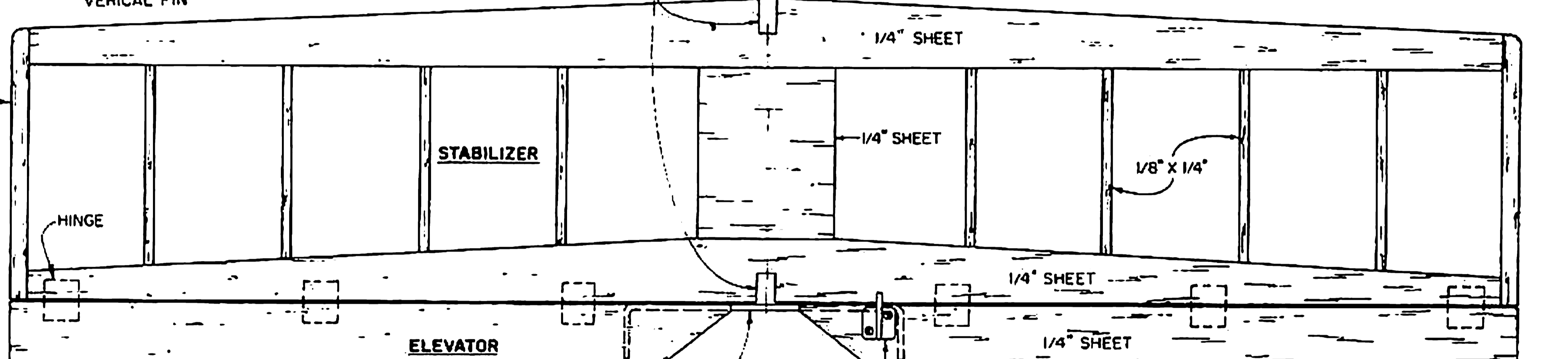
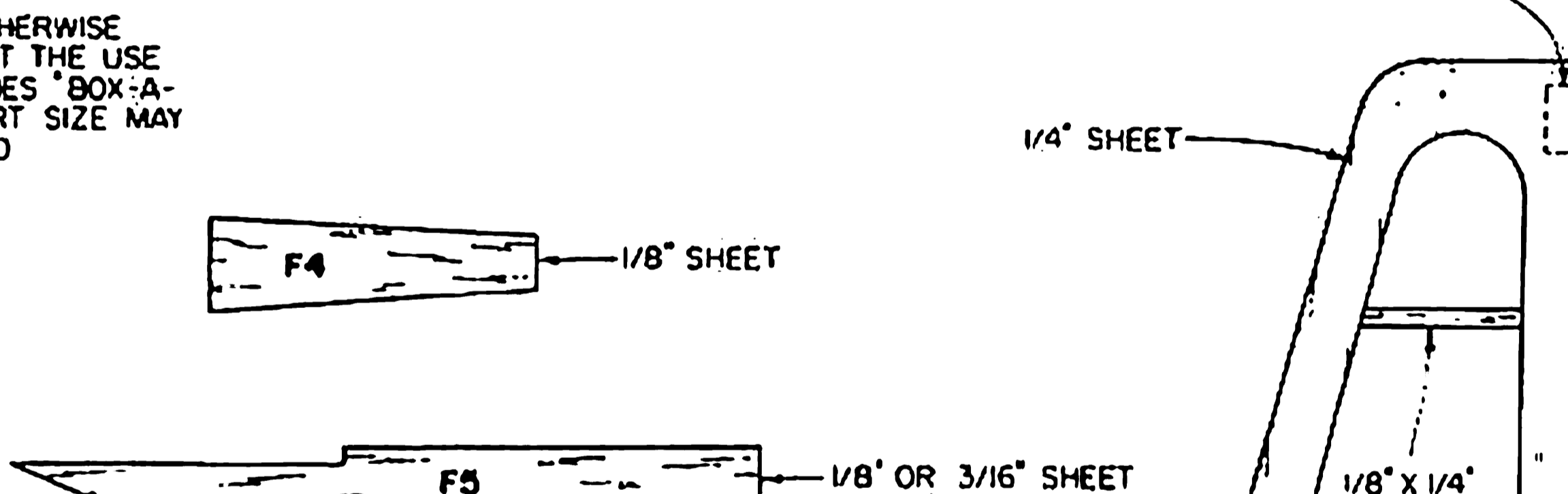
RECOMMENDED CONTROL SURFACE TRAVEL LIMITS:
 ELEVATOR - 3/8" UP & DOWN AT WIDEST POINT
 RUDDER - 5/8" LEFT & RIGHT AT WIDEST POINT

FOR 049 POWERED VERSION, USE 3/16" THICK WOOD STOCK FOR STABILIZER/ELEVATOR, RUDDER/VERTICAL FIN.
 CUT THESE NOTCHES TO PRODUCE A TIGHT FIT WITH THE VERTICAL FIN BASE POSTS (3/16" SLOT FOR 049 VERSION).
 WHEN COVERING WING WITH HEAT SHRINKABLE FILM TYPE COVERING MATERIAL, TWIST IN 1/8" OF WASHOUT AT BOTH WING TIPS, MEASURED AT W6 RIBS.



SAFETY NOTE: THIS AIRCRAFT HAS BEEN DESIGNED FOR USE WITH ENGINES UP TO 10 CU IN DISPLACEMENT. THE USE OF LARGER SIZE ENGINES IS NOT RECOMMENDED.

NOTE: ALL WOOD IS BALSAM, UNLESS NOTED OTHERWISE. THE VARIOUS WOOD SIZES SHOWN, REFLECT THE USE OF STOCK TO BE FOUND IN TOWER HOBBIES "BOX-A-BALSAM". IN SOME CASES, THE ACTUAL PART SIZE MAY BE LESS THAN THE WOOD SIZE SPECIFIED.



NOTE: "SQUARED" TRAILING EDGE ON RUDDER & ELEVATOR.
 CUT OVER SIZE AND TRIM TO FINISHED OUTLINE AFTER GLUING IN PLACE.
 ALL WING RIBS ARE 3/32" SHEET FOR 049 POWERED VERSION, USE 1/16" SHEET.

NOTE: TOWER HOBBIES "BOX-A-BALSAM" ASSORTMENT CONTAINS SUFFICIENT WOOD (BALSAM & PLYWOOD) TO BUILD TWO OF THESE MODELS.

DESIGNED BY: STU RICHMOND
 PLANS BY: Bob Wallace

