

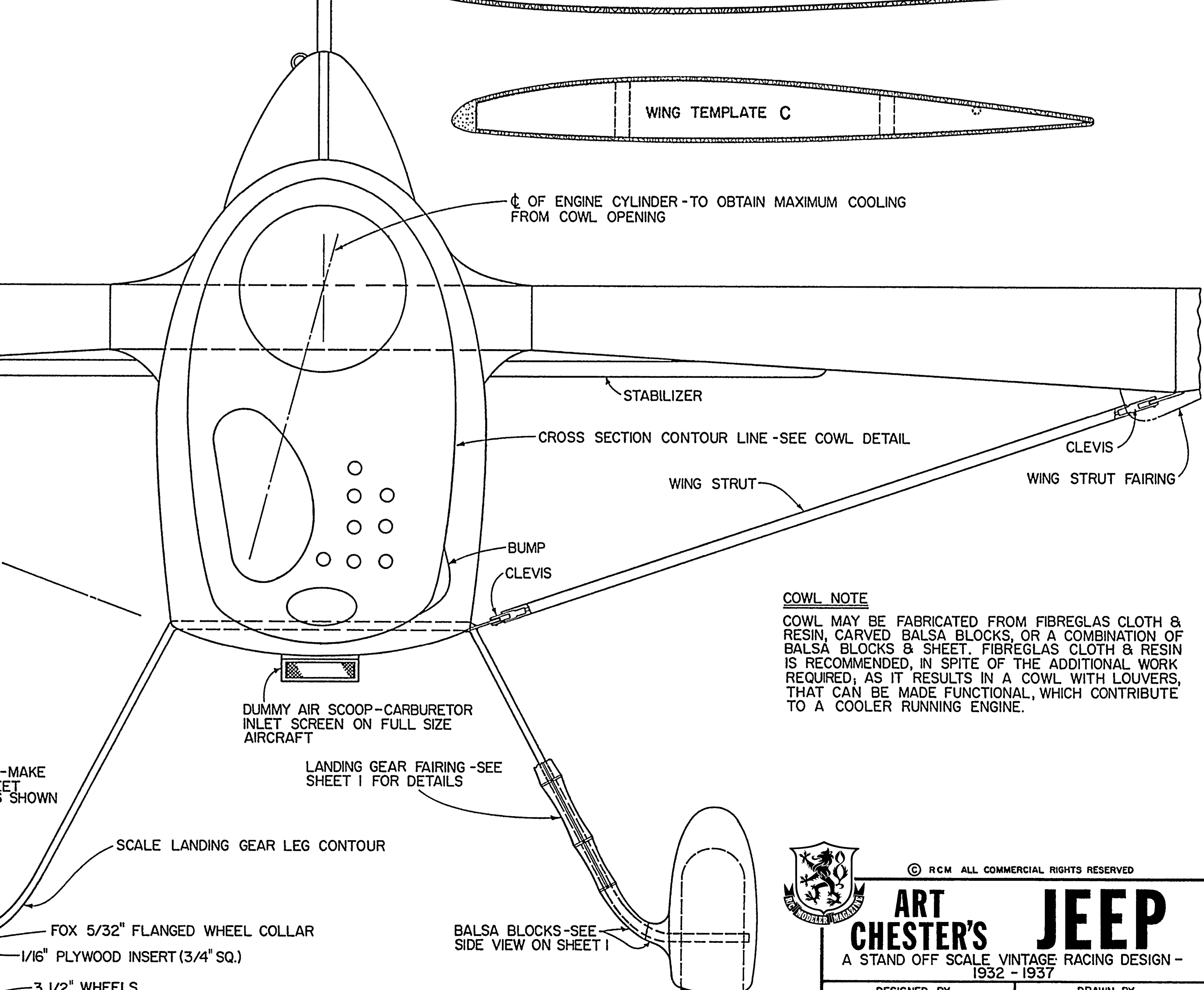
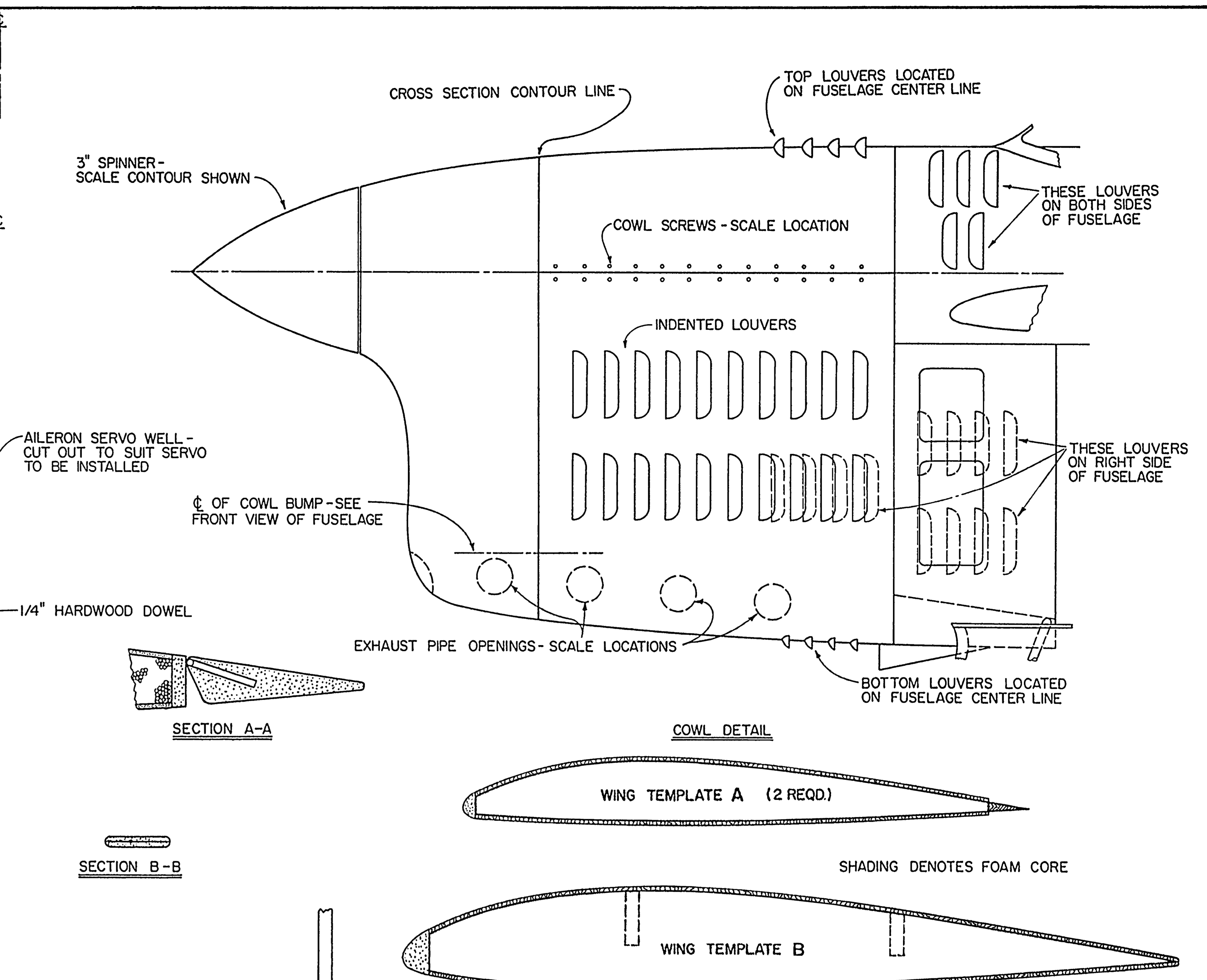
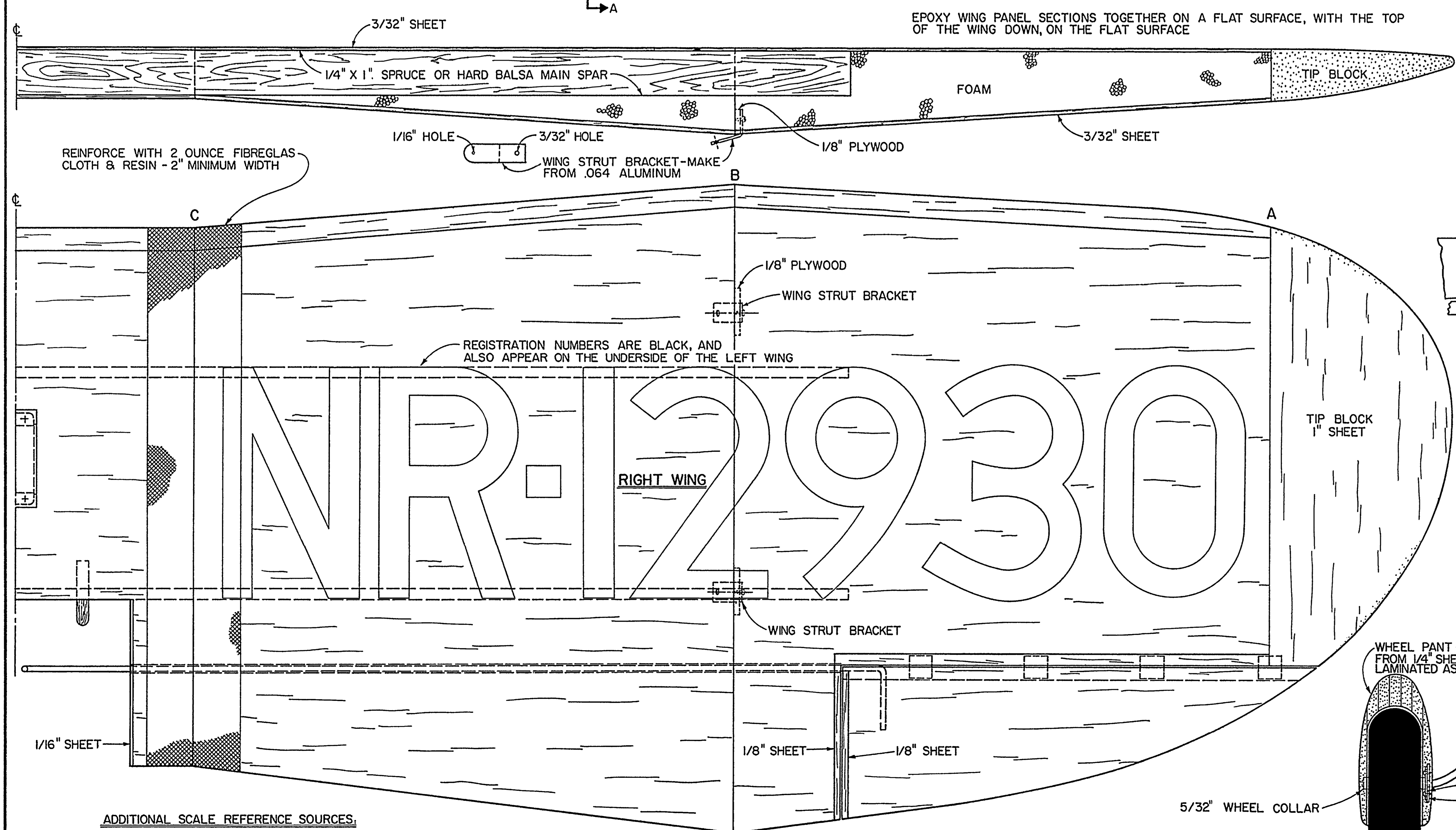
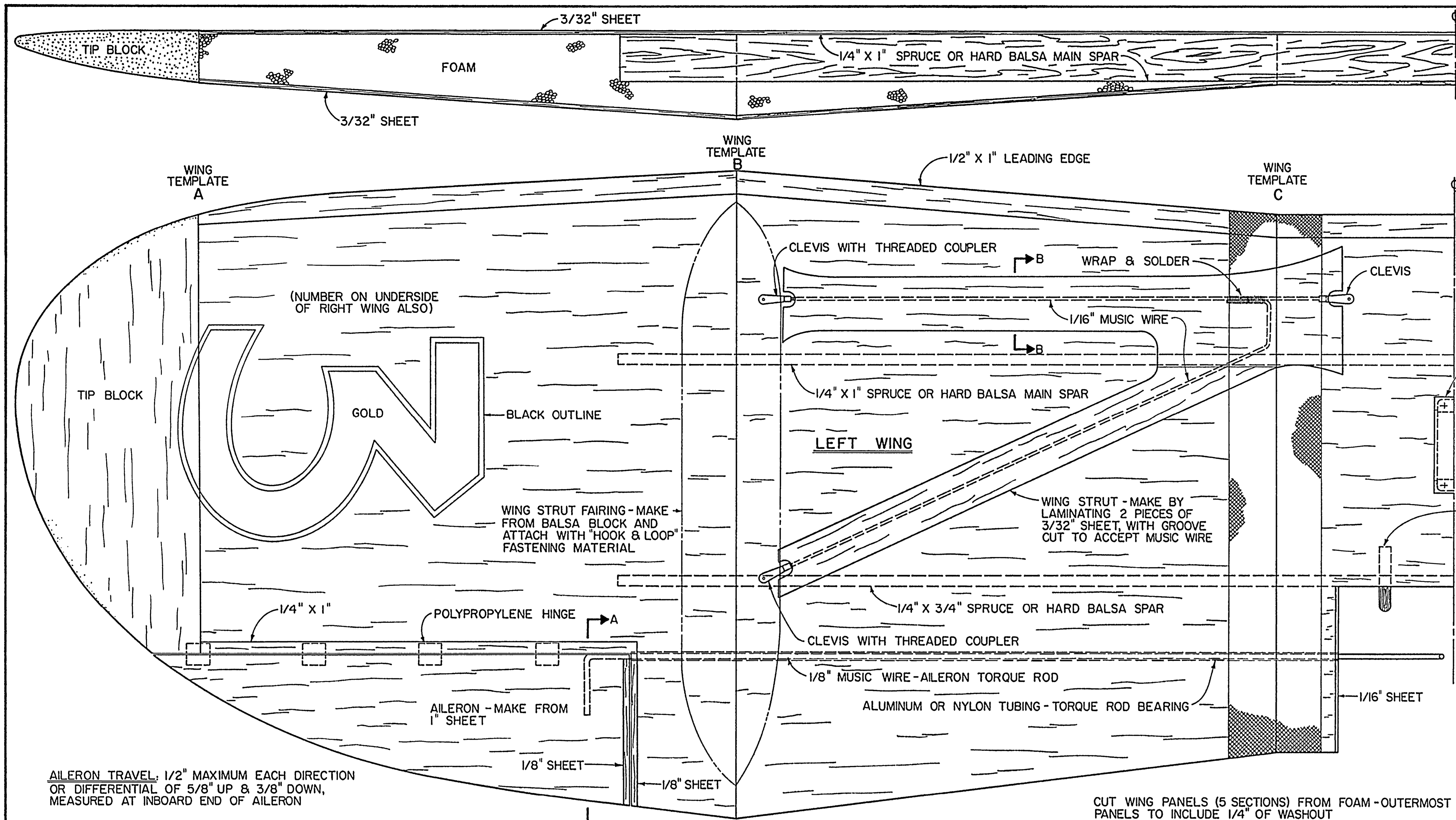
- NOTES**
1. ALL WOOD IS BALSA UNLESS NOTED OTHERWISE.
  2. FOX 3/4" SHAFT EXTENSION IS USED TO PROVIDE GREATER CLEARANCE BETWEEN THE CARBURETOR AND COWL.
  3. POSITION WING/FUSELAGE/COCKPIT ASSEMBLY IN PLACE ON FUSELAGE BEFORE DRILLING THESE HOLES. DRILL NO. 8 HOLES THRU FORMER D, DOUBLER BLOCKS, AND FORMER E. REMOVE WING/FUSELAGE/COCKPIT ASSEMBLY AND ENLARGE HOLES IN FORMER E TO 1/4" DIA. TAP HOLES IN FORMER D & DOUBLER BLOCKS WITH A 1/4-20 TAP, TO ACCEPT NYLON BOLTS.
  4. THE TERM "LITE PLYWOOD" INDICATES 3 PLY POPULAR PLYWOOD. ALL OTHER PLYWOOD IS BIRCH AIRCRAFT GRADE.

© RCM ALL COMMERCIAL RIGHTS RESERVED

**ART CHESTER'S JEEP**  
A STAND OFF SCALE VINTAGE RACING DESIGN - 1932-1937

DESIGNED BY JOHN A. DEVRIES  
DRAWN BY Bob Wallace

0 1 2 3 4 5 6



ADDITIONAL SCALE REFERENCE SOURCES:  
 1. THE ART CHESTER STORY BY JOHN UNDERWOOD  
 2. BOB HOLMAN PLANS PO BOX 741 SAN BERNARDINO, CALIFORNIA 92402

**COWL NOTE**  
 COWL MAY BE FABRICATED FROM FIBREGLAS CLOTH & RESIN, CARVED Balsa BLOCKS, OR A COMBINATION OF Balsa BLOCKS & SHEET. FIBREGLAS CLOTH & RESIN IS RECOMMENDED, IN SPITE OF THE ADDITIONAL WORK REQUIRED, AS IT RESULTS IN A COWL WITH LOUVERS, THAT CAN BE MADE FUNCTIONAL, WHICH CONTRIBUTE TO A COOLER RUNNING ENGINE.

© RCM ALL COMMERCIAL RIGHTS RESERVED

**ART CHESTER'S JEEP**  
 A STAND OFF SCALE VINTAGE RACING DESIGN - 1932 - 1937

DESIGNED BY JOHN A. DEVRIES DRAWN BY *Art Underwood*