

3/8" SQ. LEADING EDGE (SAND TO SHAPE, SEE DETAIL)

3/32" LEADING EDGE SHEETING (TOP & BOTTOM)

1/4" x 3/8" L.G. MOUNT BRACE

RB 1

RB 2

RB 3

RB 4

RB 5

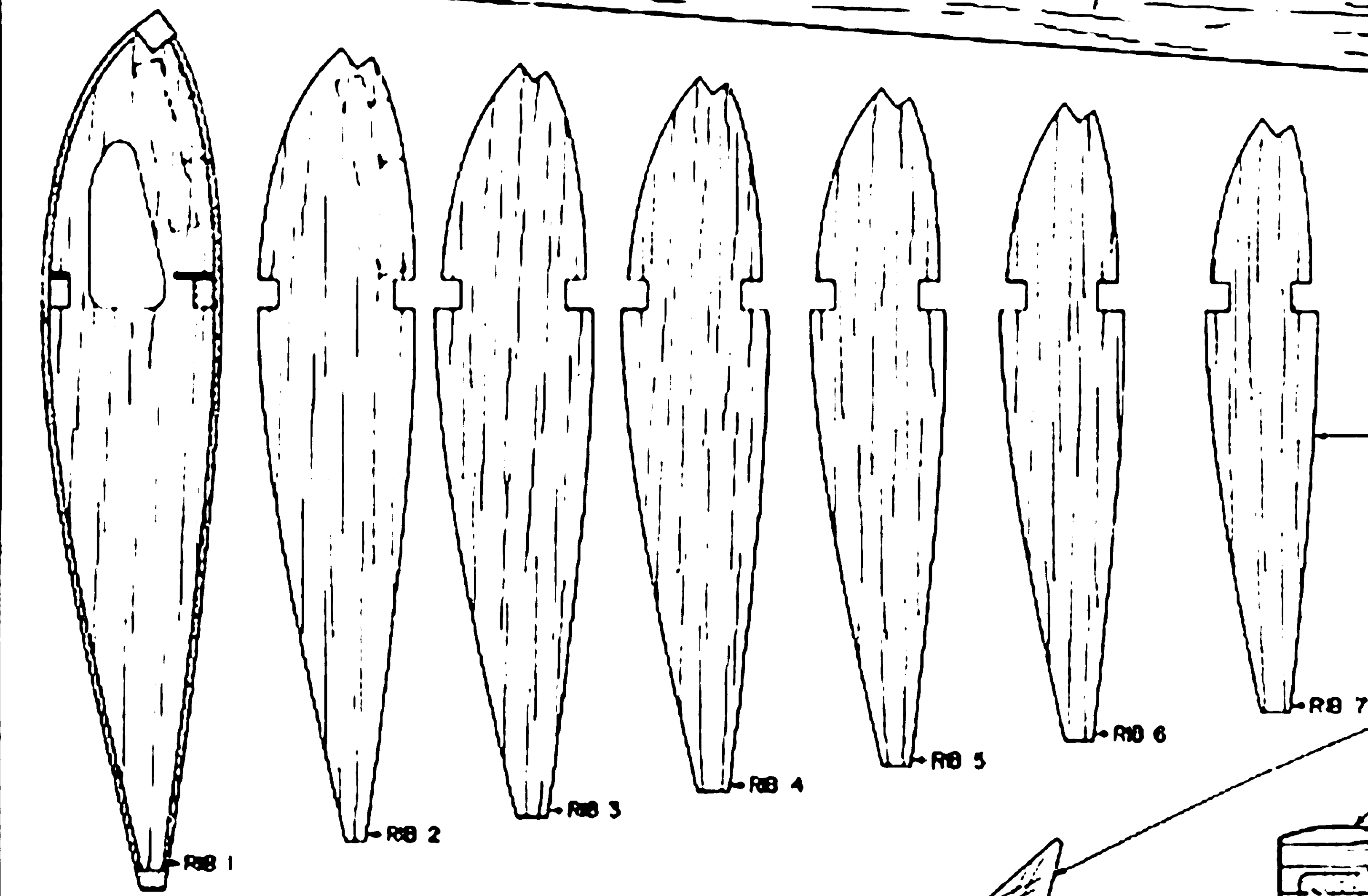
RB 6

RB 7

3/8" x 3/4" LANDING GEAR BLOCK (HARDWOOD)
 1/16" PLYWOOD DIHEDRAL BRACE (SEE DETAIL)
 1/4" x 3/8" SPARS (TOP & BOTTOM)
 3/32" x 1/4" CAP STRIPS (3 PLACES, BOTTOM ONLY)
 ALERON SERVO (SERVO WHEEL DOWN)
 ELEVATOR SERVO
 3/32" BOTTOM SHEET TO HERE
 CUT AWAY BOTTOM SHEET TO CLEAR
 ALERON CONTROL LINKS
 1/4" x 3/8" MEDIUM TRAILING EDGE

1/16" VERTICAL GRAIN SHEAR WEBS (10)
 WRAP RECEIVER IN FOAM & STUFF INTO
 FORWARD COMPARTMENT
 THROTTLE SERVO (MOUNT TO RB 1 WITH
 SERVO TAPE)
 RUDDER SERVO (MOUNT TO TOP SHEETING
 WITH SERVO TAPE)
 3/32" TOP SHEETING (DETERMINE LOCATION
 OF PUSHROD EXITS WHEN INSTALLING SERVOS)
 HINGE LOCATION (TYPICAL)
 5/16" x 1/4" TRAILING EDGE STOCK

DIHEDRAL: 2-1/2"
 EACH TIP

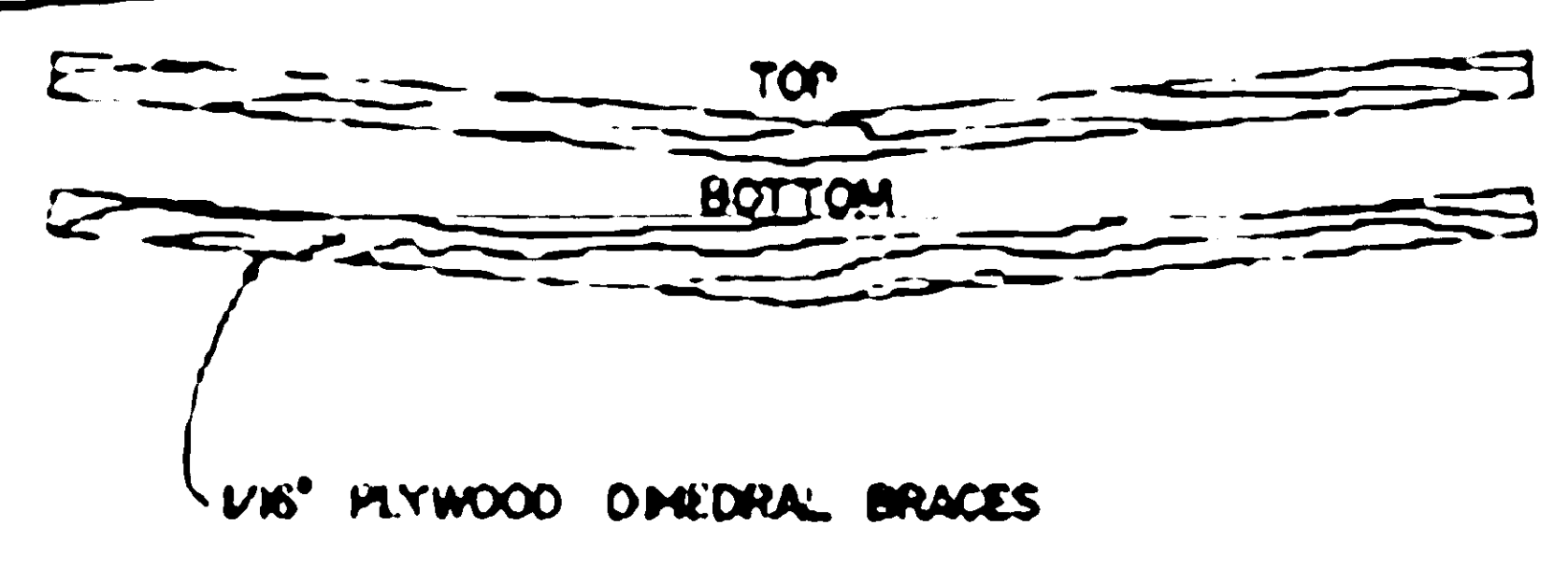


LANDING GEAR STRAPS
 5/32" MUSIC WIRE LANDING
 GEAR PATTERN
 ALL WING RIBS CUT FROM
 3/32" SHEET (2 EACH REQUIRED)
 NOTE HOLE IN RB 1 TO PASS
 RADIO EQUIPMENT WIRES THROUGH

1/16" PLEX WIND SCREEN
 1/2" SHEET HEAD REST

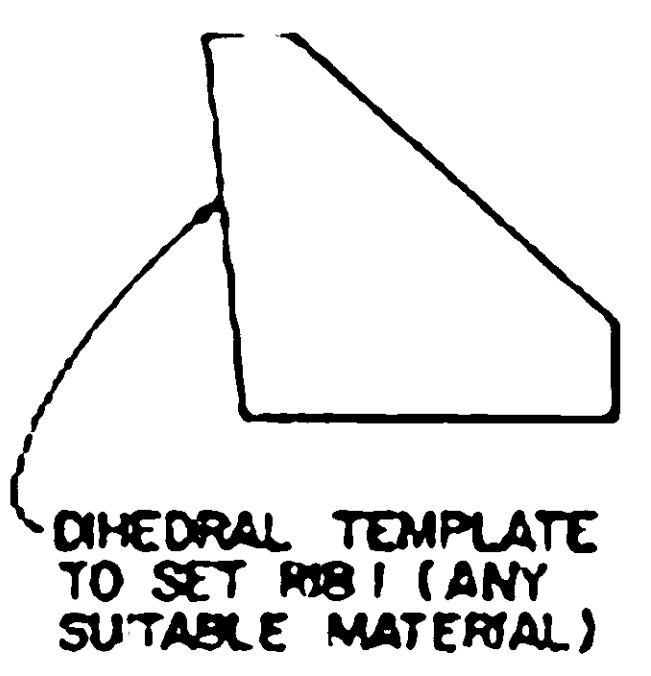
1/4" x 3/8" SPRUCE
 EYE SCREW WITH SHORT
 LENGTH OF 3/32" BRASS
 TUBE, SOLDERED IN PLACE
 AS SHOWN

1/2" SHEET FUSELAGE

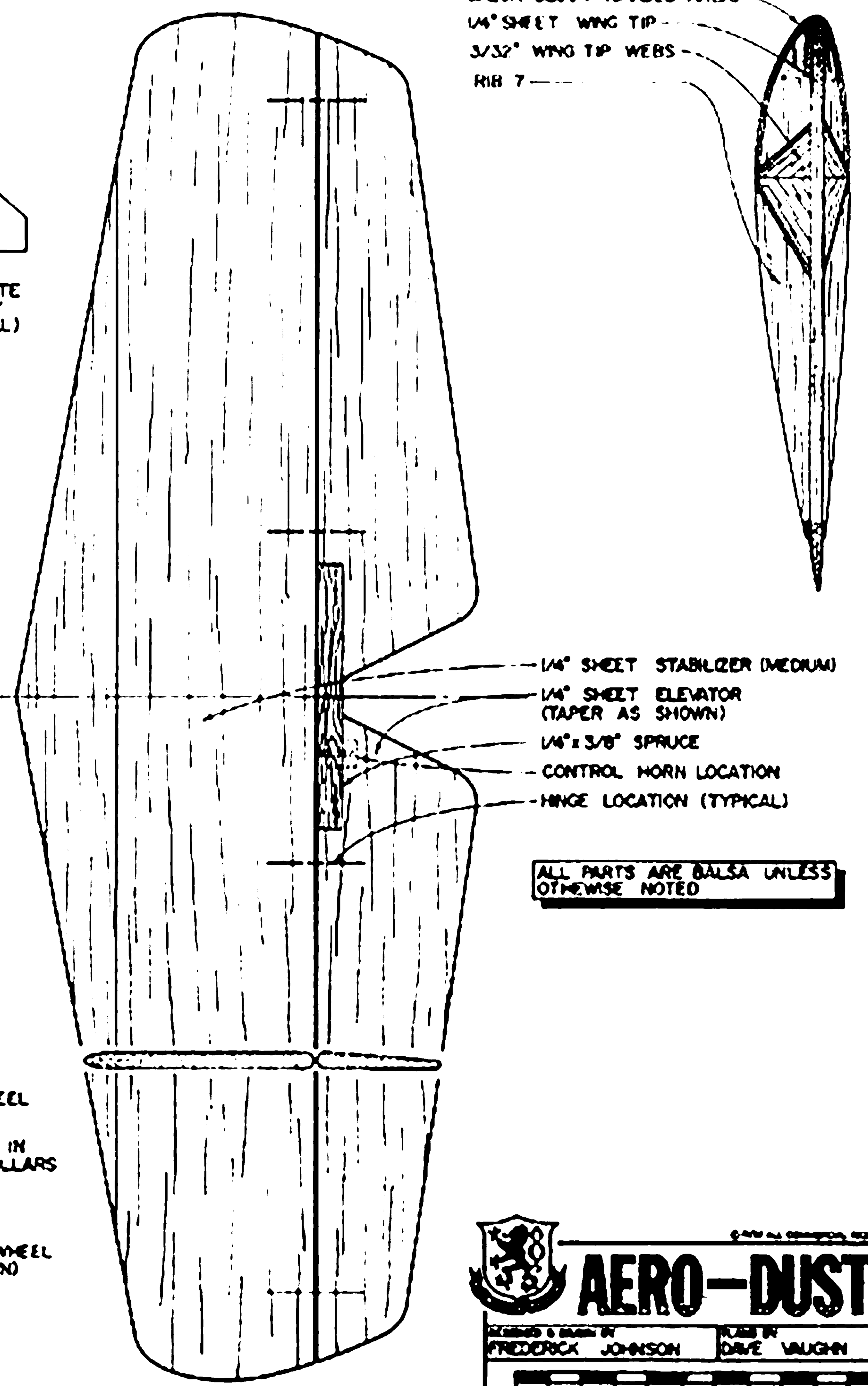


1/16" PLYWOOD DIHEDRAL BRACES

3/16" SHEET FIN & RUDDER
 HINGE LOCATION (TYPICAL)



DIHEDRAL TEMPLATE
 TO SET RB 1 (ANY
 SUITABLE MATERIAL)



BALSA BLOCK (SHADED AREA)
 1/4" SHEET WING TIP
 3/32" WING TIP WEBS
 RB 7

1/4" SHEET STABILIZER (MEDIUM)
 1/4" SHEET ELEVATOR
 (TAPER AS SHOWN)
 1/4" x 3/8" SPRUCE
 CONTROL HORN LOCATION
 HINGE LOCATION (TYPICAL)

ALL PARTS ARE BALSA UNLESS
 OTHERWISE NOTED

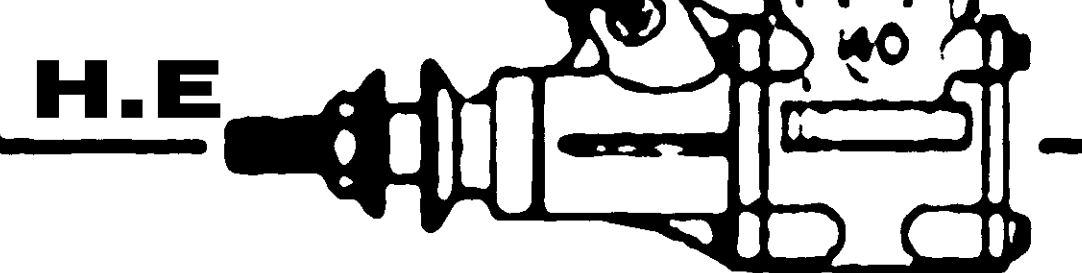
1/2" x 3/8" MAPLE
 MOTOR MOUNTS
 ROUND OFF
 1/16" PLYWOOD DOUBLER
 FEATHER EDGES
 40 SIZE ENGINE
 RECOMMENDED

C.G. RANGE
 3/8" SQ. LANDING GEAR MOUNT BRACE (HARDWOOD)
 3/8" x 3/4" LANDING GEAR BLOCK (5/32" GROOVE)
 5/32" MUSIC WIRE LANDING GEAR (SEE PATTERN)
 2 1/4" DUBRO MAIN WHEELS

STANDARD STRIP ALERON HARDWARE,
 MODIFY TO PROVIDE BOTH CONTROL
 LINKS ON LEFT SIDE OF FUSELAGE
 USE EPOXY TO JOIN WING TO FUSELAGE
 REINFORCE SERVO MOUNT POSITIONS WITH
 1/8" PLYWOOD GLUED TO RB 1 & TOP
 WING SHEETING
 MOUNT SERVOS TO PLYWOOD WITH SERVO
 TAPE IN POSITION SHOWN
 3/32" x 1/4" CAP STRIPS (3 PLACES, BOTTOM ONLY)

SLIDE PUSHROD GUIDES ONTO THE
 1/16" MUSIC WIRE PUSHRODS BEFORE
 ATTACHING THREADED ROD ENDS
 EPOXY PUSHROD SUPPORTS TO FUSELAGE
 ONLY AFTER PROPER ALIGNMENT IS OBTAINED
 NOTE: TAIL WHEEL SHAFT IS FREE TO MOVE
 INSIDE 3/32" BRASS TUBE. IT IS HELD
 IN PLACE BY PASSING 0.05 WIRE THRU
 1/16" BRASS TUBE ON BOTTOM OF RUDDER

1/16" O.D. BRASS OR
 ALUMINUM TUBING
 REINFORCE WITH
 FIBERGLASS TAPE
 0.05 MUSIC WIRE (WRAP
 & SOLDER TO TAIL WHEEL
 SHAFT)
 1" TAIL WHEEL, SECURE IN
 PLACE WITH WHEEL COLLARS
 3/32" BRASS TUBING
 0.05 MUSIC WIRE
 1/16" MUSIC WIRE TAIL WHEEL
 SHAFT (BEND AS SHOWN)



AERO-DUSTER
 DESIGNED & DRAWN BY: FREDERICK JOHNSON
 MADE BY: DAVE VAUGHN
 SCALE: 1" = 10"