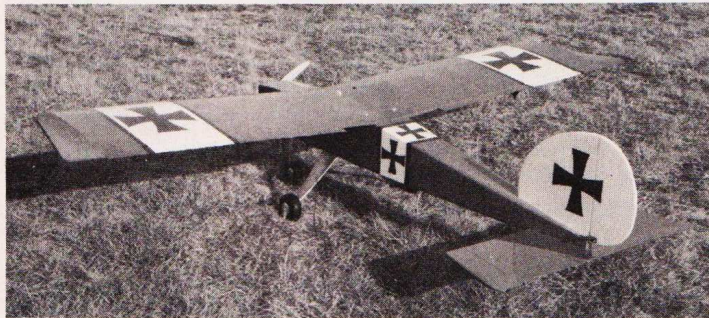


RCM PRODUCT REVIEW

Bud Nosen BIG STICK



With all of the excitement of big models coming along, newcomers may not be ready to step right into the large scale models being offered. If you fit in this category and are shopping around for something easy to build, strong, durable and easy to fly, then the Bud Nosen Big Stick fits the bill nicely. This kit comes in a box 48 $\frac{3}{4}$ " x 9" x 4 $\frac{1}{4}$ " and is so compact it doesn't rattle. Packaging is first class with small parts neatly bagged. Most parts were easy to identify but some sheeting and wood had to be examined carefully so as not to make a mistake.

Two sheets, full size, comprise the plans with a thorough instruction booklet accompanying them. Both plans and instructions are clear and easily understood. Wood, hardware and pre-fabricated parts are of fine quality with die-cut ribs being average.

Construction:

The instruction manual begins with the wing first. We chose to build the fuselage first so that the tail, engine, radio and wings could be added as they were built. Even though the order of building was changed, follow the instructions for each of the respective units closely and you will avoid problems later.

The fuselage was begun by building the two sides, joining them with formers and sheeting the bottom. Leave the top open until the pushrods are installed.

Horizontal stabilizer and vertical fin and rudder were built next. These units use open construction followed by sheet balsa covering. After the stab hold-down holes have been drilled and tapped, add Hot Stuff. This makes the wood threads hard and less likely to strip out.

C/B Associates hinges were used in place of the hinges suggested in the instructions. The C/B hinges are strong, friction-free and easy to install. The method used was to cut slots for the hinges in the rudder and fin to get proper alignment.

SPECIFICATIONS

Name	Big Stick
Aircraft Type	Monster Sport
Manufactured By	Bud Nosen P.O. Box 105, Two Harbors, Minnesota 55616
Mfg. Suggested Retail Price	\$129.95
Available From	Retail Outlets
Wing Span	101 Inches
Wing Chord	19.2 Inches
Total Wing Area	1940 Square Inches
Fuselage Length	81 Inches
Stabilizer Span	36 Inches
Total Stab Area	396 Square Inches
Mfg. Rec. Engine Range	2.0-2.6 cu. in.
Recommended Fuel Tank Size	32 Ounce
Recommended No. of Channels	4 (6 were used)
Recommended Control Functions	Rud., Elev., Throt., Ail. Choke, parachute drop and/or tow hook release.

Basic Materials Used In Construction:

Fuselage	Balsa and Ply
Wing	Balsa, Ply and Spruce
Tail Surfaces	Balsa and Ply
Building Instructions on Plan Sheets	Yes
Instruction Manual	Yes (6 pages)
Construction Photos	No

RCM PROTOTYPE

Radio Used	Futaba 6 channel
Engine Make & Displacement	Super Hustler 2.6 CI
Tank Size Used	EWB one quart
Weight, Ready to Fly	368 Oz.
Wing Loading	27.3 Oz./Sq. Ft.

SUMMARY

WE LIKED THE:

Detailed plans, instruction book and the performance of completed aircraft.

WE DIDN'T LIKE THE:

Difficulty in identifying sheet balsa. Suggest that manufacturer stamp all parts as to what it is.

Next cover the rudder leading edge with the color of Super MonoKote you will use and then permanently install the hinge with glue. Drill a hole on one side through the wood and hinge (don't go all the way through the other side of the wood). Now countersink the hole in the rudder and install a 3/8" long #6 flat head screw and secure with Hot Stuff. Repeat this on the fin, elevator and stab. Complete by MonoKoting all parts of the tail.

Connecting the rudder servo to the rudder was done with Sullivan Gold'N-Rods. One was used on each side in order to pull the rudder left or pull it right. Using this method eliminates any flex you might have if you use only one push/pull rod. The large control horns by C/B Associates are used, one on each side of the rudder.

In the wing construction a suggestion is included in the instructions for making a wing jig. I strongly recommend you do this. We will not go into detail of the wing construction because it is straightforward and easy to understand using the instruction manual as a guide.



"HOT STUFF"—The **only adhesive** used in construction of this 1930 FLEET BIPE built by Bob Hunter. Model powered by E.W.H.'s 2.6 cu. in. HUSTLER

FULL-SIZE STRENGTH FOR ANY SCALE YOU BUILD

"HOT STUFF"™

ORIGINAL CLEAR FORMULA
LOW VISCOSITY-DEEP PENETRATION
INSTANT BOND RATE (3 to 10 sec.)

This is the one that started it all

HI-PERFORMANCE ADHESIVES—AVAILABLE IN HOBBY SHOPS

Satellite City

HOT STUFF

≡BLUE LINE≡

EXCLUSIVE "VISIBLE" FORMULA
LOW VISCOSITY-DEEP PENETRATION
INSTANT BOND RATE (3 to 10 sec.)

AROUND THE WORLD

P.O. BOX 836, SIMI, CA 93065 • PHONE (805) 522-0062

**THE BEAUTIFUL
1930 FLEET BIPE**
(KIT BY CONCEPT MODELS)

**ALL
"HOT STUFF"™**

NEW "HOT STUFF"



**GAP FILLING
FILLETING
POSITIONABLE**

HIGH VISCOSITY-TIMED BOND (10-25 sec.)

Use like regular glue without the wait

BIG STICK

Hot Stuff was the main adhesive used except where parts didn't fit tight. In those cases, epoxy was used. Now available is the thick Super-T Hot Stuff. If you use Hot Stuff properly and in conjunction with soda, you'll build light, strong and fast.

After completing the wing, fit the ailerons using the C/B Associates hinges and using the method outlined for the tail

NEW . . . **HUSKY**

CONVERTED FROM McCULLOCH CHAIN SAW

FEATURES:

- 2.0 c.i. displacement • Economical — 40:1 oil/gas mixture • Smooth running — double crankshaft counterweights and needle bearings throughout
- Less vibration — Strobe high-speed balanced flywheel
- More power — Top Flite 18-6 prop @ 8,200 rpm

COMES COMPLETE WITH:

- Engine Mount, Prop Adapter, Washer and Bolt
- Built in Fuel Pump
- Carburetor, Magneto and Muffler

\$124.95 plus
\$4.00 C.O.D. & \$2.00 Handling
Phone: **305-583-3171** After 6 p.m. EST

J. C. ENTERPRISES
2251 SW 28th Terrace
Ft. Lauderdale, Florida 33312



Suggested
list price \$144.95



\$89.95

shipping not included
Calif. residents add 6% sales tax



Optional Sonic Tronics Power Panel

NEW! The *FLight* Box

from
Custom Woodcraft

- ★ **FOUR FOLDING LEGS** - Lock up & down by use of machined metal locking device. Raises unit to 34" working height.
- ★ **FUSELAGE HOLDERS** - Raise up & lock and are adjustable from 1 1/4" to 5 1/4". Lined with neoprene coated sponge rubber.
- ★ **WING HOLDERS** - Fold out on back of "Flight Box" and are lined with neoprene coated sponge rubber.
- ★ **POWER MODULE** - Slides out for use at the flight line. Holds battery & starter and has holes drilled for necessary tools. Built-in carrying handle. Opt. Sonic Tronics Power Panel instl. \$39.95
- ★ **CONSTRUCTION** - Birch plywood & Maple hardwoods, aluminum, steel, and brass machined parts. Interlocking construction.
- ★ **FINISH** - Medium Pecan & Urethane. Very durable.

The "Flight Box" is made for those who want everything in one unit. It folds down to a nice suitcase package - 21 1/2" x 9 1/2" x 18" overall. The Power Module fits nicely in the unit with 12 volt battery & starter in place. Take the "Flight Box" to the flying field, lower legs, raise fuselage holders, lock fuselage in place and now you can put on wing, run engine or make repairs. It's like having a third hand. The unit will hold a one gallon fuel can & transmitter, plus has two drawers for parts. B of A/Visa and Master Charge Welcome.

Custom Woodcraft

"Distinctive Quality in Wood"

Star Route, Day Road - Telephone (916) 336-6378 - McArthur, CA 96056

NOW! A COMPLETE RC CENTER IN DOWNTOWN SAN FRANCISCO.

See one of America's most exciting hobby centers right in the heart



of downtown San Francisco. Airplanes, helicopters, boats, cars plus much, much more.

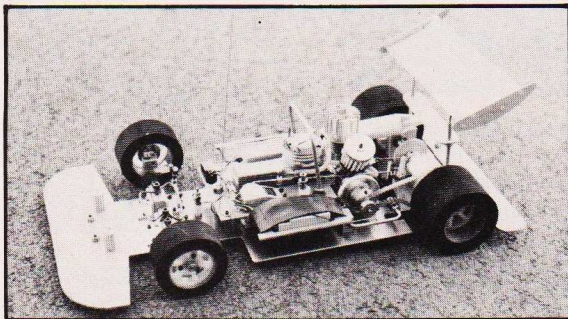
the
hobbyco
of san francisco

217 Sutter St. (Downtown) 421-2553 • 5150 Geary near 16th Ave. (Open Sundays) 386-2802

THORP

**1/8 SCALE COMPETITION RACE CAR KIT
less engine & radio**

\$245.00



**THE
EASY
ONE
TO
DRIVE**

WINNER IN THE TOP THREE CLASSES IN 1977 SOUTHERN CALIFORNIA CHAMPIONSHIP SERIES

Variable speed transmission & differential.

Available: READY TO RACE VERSION

THORP MFG.

THORP R/C RACEWAY

1655 E. Mission Blvd., Pomona, Calif. 91766

(714) 622-6518

BIG STICK

assembly. The aileron bellcranks were mounted to the plywood mounting plates and glued into place with the actuating rods to the ailerons on the bottom of the wing. This makes for a much neater installation. Install the servo in the center section with the arm facing fore and aft. Add two metal straps (1/4" x 2") bolted to the servo arm clevis holes using a 2/56 bolt and lock nut. Leave the nut just loose enough for the strap to pivot. This will form a figure H and instead of using one push/pull rod in each wing, you will have a pull/pull rod in each wing. As outlined before, this gives much more positive control eliminating any flex.

We chose to sheet the entire top leading edge of the wing with balsa strictly for a smoother look and not for strength. The last step is to add capstrips and sand.

The prop was finished to match the scheme of the model, complete with white band, black crosses and pin stripe. Wheel pants were made and finished in the same way. These little details add to the overall appearance as did the white C/B Associates spinner. C/B Associates, 2158 Cloud Way, Hayward, CA 94545, has a free data sheet on their 1/4 Scale products.

Hi Johnson makes new plastic ball joints in both 2/56 and 4/40 sizes. These ball joints were used to connect the aileron horns and pushrods as well as the rudder horn connections. If you connect these ball joints to the horns with a 2/56 bolt and elastic stop nut they will not come loose as a clevis can.

If your hobby dealer can't supply you with the Hi Johnson ball joints, write Hi at 11015 Glenoaks Blvd., Pacoima, CA 91331.

Covering:

The entire Big Stick was covered with Super MonoKote and you are ready to apply this covering or the covering of your choice.

Engine:

Any of the large engines on the market will fly your Big Stick. The 2.6 cu. in. E.W.H. "Super Hustler" engine was used swinging a 20/8 prop, indicating quite a bit of power. The engine comes complete with mount, muffler, six bolt hub, electronic ignition, ignition battery and charger. No special adapters are needed to mount the engine to the firewall or servos. A special feature of this engine is a servo actuated choke which helps starting especially in cold weather.

The fuel tank was made from the E.W.H. tank kit. This is a one quart size tank and with a little soldering, you turn the tank kit into a fine tank.

Radio:

The radio used in the Big Stick was the Futaba 6 channel. This radio does a super job of flying the model. Naturally, space for installation is no problem. The servos have

TOWER IS SERVICE!

L.R. Taylor & Co.
2083 1/2 Roscoe Blvd.
Canoga Park, CA 91306
213-360-1178

Kraft Rocky Mountain
212 No. Farragut
Colorado Springs, CO 80909
303-471-1277

Tower Service West
330 E. Orangethorpe Ave.
Suite J
Placentia, CA 92670
714-996-9730

Tower Service Midwest
7420 Seven Mile
Salem, MI 48167
313-455-1380

Dwight's Radio Control
Box 213
West Hill, Ontario
Canada M1E 4R5
416-282-8314

New England RC Service
497 Central Ave.
Seekonk, MA 02771
617-761-6268

Kraft RC Electronics
1685 Beckwith Dr.
Hudson, OH 44236
216-467-7888 (days)
216-655-2278 (evenings & weekends)

Kraft Service Atlanta
20 N. Main St.
Alpharetta, GA 30201
404-475-0771

Adams Electronics
2713 Baldwin Brook Dr.
Montgomery, AL 36111
205-288-6702

Control Engineering
P.O. Box 2609
350 Thyme St.
Satellite Beach, FL 32927
305-773-4218

Tower Hobbies' radios are made by Kraft, the World's finest R/C systems manufacturer, and are backed up by this nation-wide network of factory authorized service centers. This combination, plus Tower's commitment to total customer satisfaction guarantees that your investment is protected long after the sale.

TOWER HOBBIES
P.O. Box 778, Champaign, Ill. 61820
217-384-1010
Toll Free 800-637-7886
Ill. Toll Free 800-252-3336

BIG STICK

ample speed and power to control the large model. All installation is normal and straightforward.

Flying:

Before flying the model, it was placed on a table and leveled. The wing and tail incidence was checked with a Robart incidence meter and set at zero.

After checking the C.G. and control travel, the model was flown. Take-off was normal with about one hundred ft. of ground roll. There was no correction needed and the

model has no bad traits. The Big Stick really performs the task it was designed for. So far, I have done the following maneuvers: Loops, rolls, snap rolls, vertical rolls, vertical snaps, spins, stall turns, inverted flight, inverted snaps, inverted spins, inverted loops and touch and go landings and take-off's. Taxiing and ground handling are done with ease as are the take-off's and landings.

Conclusion:

Anyone can build this model if he has had some building experience. Although it probably can be built by a beginner, we would question the safety aspect. Good building techniques, as well as good flying techniques, should be adhered to.

Whenever you fly, just use good judgment and practice good safety rules both in handling the large engines and flying large models.

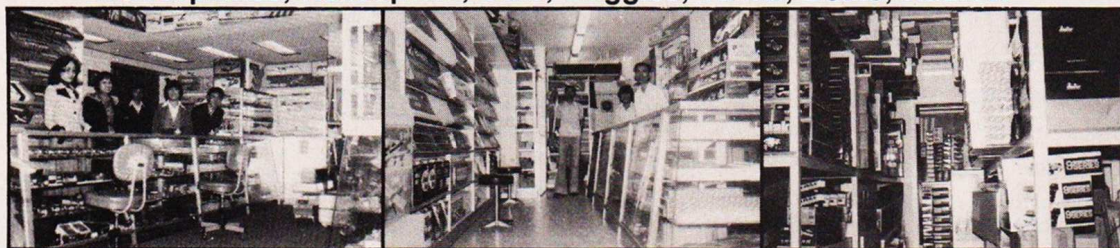
We were very satisfied with the Big Stick. It comes in a nice kit and builds into a nice flying big model. You will be pleased at how much model airplane you get for the \$129.95 kit price. I certainly recommend this model for any modeler wanting to get into large models. Those modelers already into Quarter Scale and wanting a great fun airplane should build the Big Stick. Dropping parachutes and towing gliders have added to the pleasure of flying this model. Now, build your Big Stick and enjoy flying it. □

WINNING Model & Hobby Supplies

RC Airplanes, Helicopters, Cars, Buggies, Tanks, Boats, Radios.

永利 (遙控) 模型公司

Mail Order
Service
Price
List —
US \$1.00
(By Air)



Main Branch:
(Retail & Wholesale)
2, Austin Ave., G/F.
Kowloon
Tel. K-684184, K-691028

HK Branch:
(Retail & Wholesale)
34-36, Yik Yam St. G/F.,
Happy Valley, Hong Kong,
Tel. H-753493

NT Branch: (Wholesale Only)
Ng Kah Chuen,
Pat Heung (Kam Tin)
New Territory,
Tel. NT-982917, NT-987355

10 a.m. -
7 p.m.
Closed
Sun. &
Holidays