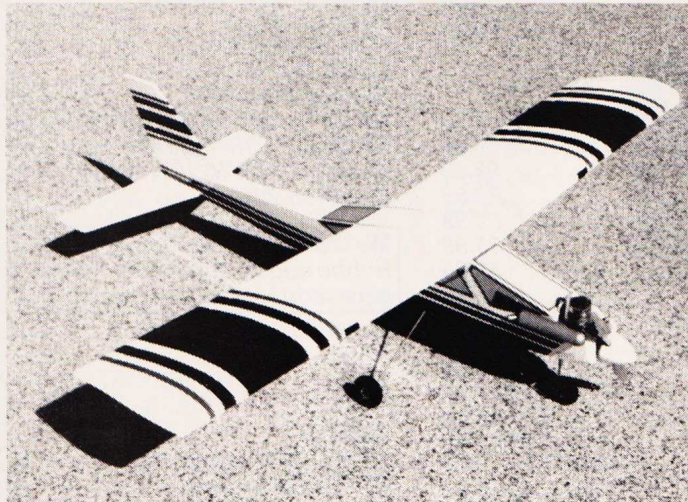
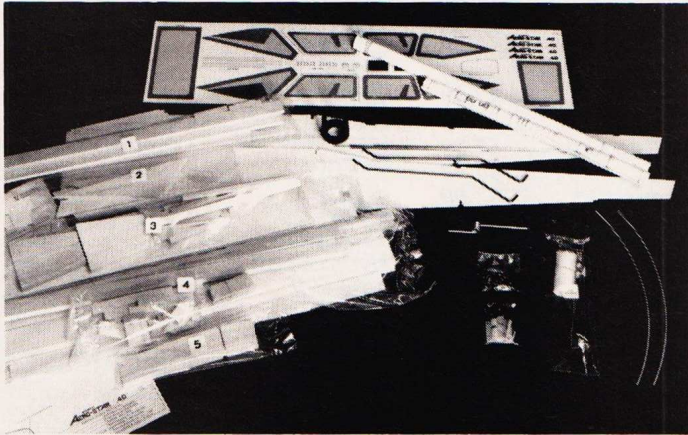


RCM PRODUCT REVIEW

Midwest Products Co. Inc. AERO-STAR 40



Gather 'round, you beginners! We're going to take a look at what may be one of the best trainers available, and certainly one of the best looking. The Aero-Star .40 has all the important qualities desired in a "first" airplane. It's large enough for good visibility, has excellent stability with good "self recovery" characteristics; three or four channel operation; light wing loading; simple, yet strong construction; and, if that isn't enough, add to it one of the best handbooks we've seen. Notice the word "handbook," since it contains **one hundred** pages of step-by-step building instructions with over **two hundred** illustrations, information on tools and materials you will need, as well as radio system installation, operation, and flying tips, all explained with the beginner in mind.

The box has a beautiful picture of the finished model, along with a list of all the important features of the kit. Inside you'll find a new method of packaging. Everything except the fuselage sides is in individual plastic bags!

SPECIFICATIONS

Name	AERO-STAR 40
Aircraft Type	Trainer
Manufactured By	Midwest Products Co. Inc. 400 S. Indiana St. Hobart, Indiana 46342
Mfg. Suggested Retail Price	\$84.95
Available From	Retail Outlets
Wingspan	62 Inches
Wing Chord	10 3/4 Inches
Total Wing Area	675 Sq. In.
Fuselage Length	53 Inches
Stabilizer Span	23 Inches
Total Stab Area	120 Sq. In.
Mfg. Rec. Engine Range30-.40 2-stroke; .40-.45 4-stroke
Recommended Fuel Tank Size	8 Oz.
Recommended No. of Channels	3-4
Rec. Control Funct.	Rud., Elev., Throt., Ail.
Basic Materials Used In Construction:	
Fuselage	Micro-Lite Ply, Ply & Hardwood
Wing	Balsa & Hardwood
Tail Surfaces	Balsa
Building Instructions on Plan Sheets	No
Instruction Manual	Yes (100 pages)
Construction Photos	No (drawings)

RCM PROTOTYPE

Radio Used	Futaba "J" Series
Engine Make & Displacement	K & B Sportster .45
Tank Size Used	Du-Bro 8 Oz.
Weight, Ready to Fly	78 Oz. (4 Lbs. 14 Oz.)
Wing Loading	16.6 Oz./Sq. Ft.

SUMMARY

WE LIKED THE:
Excellent handbook, quality and fit of parts.

WE DIDN'T LIKE THE:
No problems encountered.

These bags are labeled and numbered to assist the beginner in selecting the proper parts in sequence, as well as to protect the parts from damage or loss.

Construction:

There are three rolled plan sheets: 21" x 55" for the fuselage, 23" x 35" for the wings, and 17" x 22" for 4-stroke engine installation. The handbook's step-by-step construction sequence, combined with the excellent plans, makes construction a breeze. The quality and accurate fit of all the parts also helps to avoid problems for the beginner. The interlocking Micro-Lite plywood fuselage parts are all assembled in proper alignment **before** gluing, to help prevent mistakes. The torsion bar landing gear installation is strong, and has good shock absorbing characteristics.

The wing construction consists of balsa ribs, spruce spar top and bottom, precut balsa webbing, and balsa leading and trailing edges. The wing may be built with or without ailerons, and all parts are included for either version. A 1/2" plywood dihedral brace with center section sheeting and fiberglass cloth reinforcement insures a very strong wing.

The tail surfaces are all 1/4" sheet balsa, and assemble easily over the plans according to the directions.



ROAR, WE NEED AN UNLIMITED CLASS!

**High Power Competition Cell
1.2V/1.2AH Sub C HPRC Nickel Cadmium**



"Symbol of Perfection"

FOR R/C ELECTRIC CARS, BOATS, AND AIRPLANES

"Symbol of Perfection"



(L-r) - Ron Travis and Tom Irvin, showing the New Power Group 1.2V/1.2AH Sub C HPRC Nickel Cadmium High Power Competition Cell 7.50 Retail. Tom & Ron tested and approved cell performance at the 4th Annual Raspberry 100 GT/GTP R/C Road Race, July 19 & 20, 1986 in Hopkins, Minnesota, featuring 1/8 & 1/12 Scale ROAR cars. The batteries tested were random cells and performed as good, if not better, than the "Team" matched cells.

This NEW POWER GROUP CELL is now available direct from N.C.E., an established world-wide factory sales office for all R/C, pager, two-way radio and medical batteries, and will be available shortly from local dealers.

Mail your orders directly to our Established Sales Office.



N.C.E.

Dept. 60

3305 West Spring Mountain Road
Las Vegas, Nevada 89102

Call 1-(612) 890-1360.

Calls forwarded for your convenience.

DEALERS INQUIRIES INVITED

"Power Group is the World Leader in Repairable Replacement Batteries, Battery Analyzers and custom designs for Radio Control, Communication, and Medical Applications. Where others give up, we begin...call NOW. Put us to work for you."

Covering:

White film from Black Baron was selected for the base color, with trim from dark blue, red, and orange Top Flite MonoKote trim. This color scheme proved to be very visible in flight. The self-adhesive window and trim sheet included in the kit add a look of realism to the completed model.

Engine:

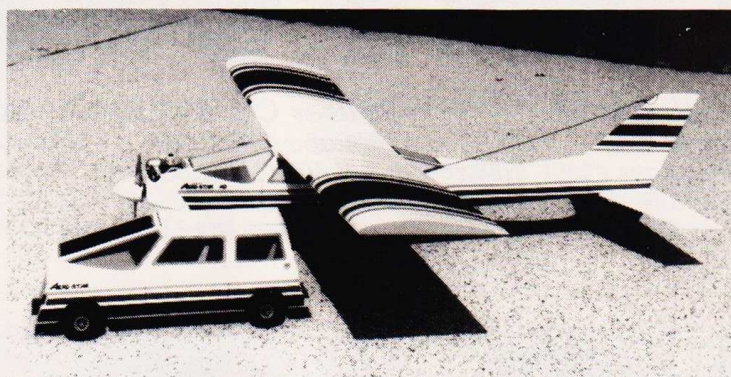
The new K & B Sportster .45, with stock muffler, was selected to power our model. This engine has more than adequate power for this model, since almost any .30 to .40 2-stroke would be sufficient. A Du-Bro 8 oz. tank was selected for the fuel supply. A nose gear with additional length above the spring coil will be required if the new K & B .45 is used with its "spider" mount.

Radio:

There's plenty of room in the fuselage for the radio equipment and the instructions in the handbook make the installation easy. Wing construction provides for easy installation of the required aileron servo and linkage, if so desired.

Flying:

Now it's time for the fun! Our model was balanced, and the control throws set according to the handbook. The first flight was really a pleasure, with no surprises whatsoever. The Aero-Star 40 is one of the most stable trainers we've flown, and has very good "self recovery" characteristics. Our model was equipped with ailerons, but we found that smooth and gentle turns could be accomplished also by



Our reviewer went a little overboard on this review and created a new Aero-Star. So far, it doesn't have a radio and we can't understand how that can be.

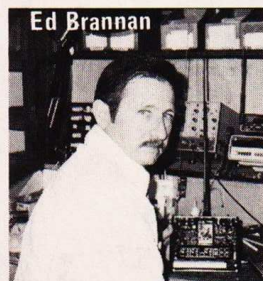
using only the rudder. This model is capable of many aerobatic maneuvers, which may be introduced as the flier's proficiency improves.

If you want a great looking trainer that is easy to build and has super flying characteristics, check out the Aero-Star 40 at your dealer. You'll be glad you did!

To assist the beginner, R/C Modeler Magazine has two Flight Training Course books available with lots of helpful information on building and flying R/C models, in addition to several books devoted to R/C engines. Check in this issue for ordering information, since you may want to consider these for your library.

Hobby Radio
Incorporated

322 So. Gallatin Rd—Madison, TN 37115
(615) 868-6811



REPAIR
SERVICE FOR:

HOBBY LOBBY
EK LOGICTROL
FUTABA
HOBBY SHACK



We stock the entire Futaba line!

Radios, accessories and parts

We cover the warranties on the radios we sell.

Tamiya Off-Road Cars

Airplane Kits



O.S. Engines
and parts

Everything from propellers to gear sets

**SALES AND SERVICE
CENTER**

Our Hobby Radio battery packs are
up to **40%** less than their list!
A better battery for less!

Futaba	Their List	HR Price	HR brand
NT-8H, Trans. Pk.			
PCM, J & G series	\$43.95	\$38.67	\$24.95
9.6V/500 MAH			550 MAH
NR-4M			
NR-4J	\$19.95	\$17.56	\$14.95
4.8V/500 MAH			550 MAH

*Write for our battery price list!
Custom made packs available!*