

Although sketches may not be of the particular plane you are building, they show typical construction procedure.

This fuselage is built with the new Comet SPEED-O-MATIC construction method. Begin by carefully cutting the top and bottom longerons from the printed wood sheet. Pin these longerons down on plan in their respective places and glue in the connecting pieces—a 1/16" sq. strip in front and a piece cut from the printed sheet at the rear. When dry, remove this unit from plan.

Glue the formers to the longeron frame, lining them up with the marks on longerons. Refer to plan for arrangement. Do not use excessive amounts of glue at this stage of assembly so the formers will not be warped and thrown out of line.

Glue side longerons in their notches, making certain that they are even at the back and that all formers are perpendicular to longerons. Then glue the wood noseplate or cowling to the front former and remove the 1/16" sq. connecting piece. Apply an additional coat of glue to all joints.

Stringers are glued in notches next. Do this in pairs—one on each side—to keep the fuselage from springing out of line. When stringers are all in place, glue in cockpit former if your model has one.

Next glue on the paper covers that fit around the wing. Also glue cockpit covers in place. If desired, transparent portions may be made of celluloid. See sketch elsewhere on plan for cockpit details.

Build wing directly over the plan. A piece of waxed paper may be used over plan to prevent glue from sticking to it. Start by pinning down the leading and trailing edges. Cut out wing tip pieces and glue them in place.

Cut out wing ribs carefully, and glue them in place to leading and trailing edges, trimming to fit if necessary.

Install the top spars, lapping but not gluing them to ribs "B". These are glued when dihedral angle is built into wing. When dry, remove framework from plan.

This sketch shows method of putting dihedral angle in wing. Slide convenient blocks under wing until tips are 1/4 inches above the work surface. Bevel ends of leading and trailing edges and glue them together. Next glue in center rib, at the same time gluing top spars together. Sandpaper leading and trailing edges to shape them.

**NOTES ON COVERING**

Stick tissue to framework using banana liquid or tissue cement. Fibers of tissue should run the length of part being covered. Use narrow strips for covering rounded fuselages and cover between stringers. After all parts of model have been covered, glue them together and spray lightly with water. This shrinks the tissue smooth. A few coats of banana liquid or clear dope may be applied to keep tissue taut.

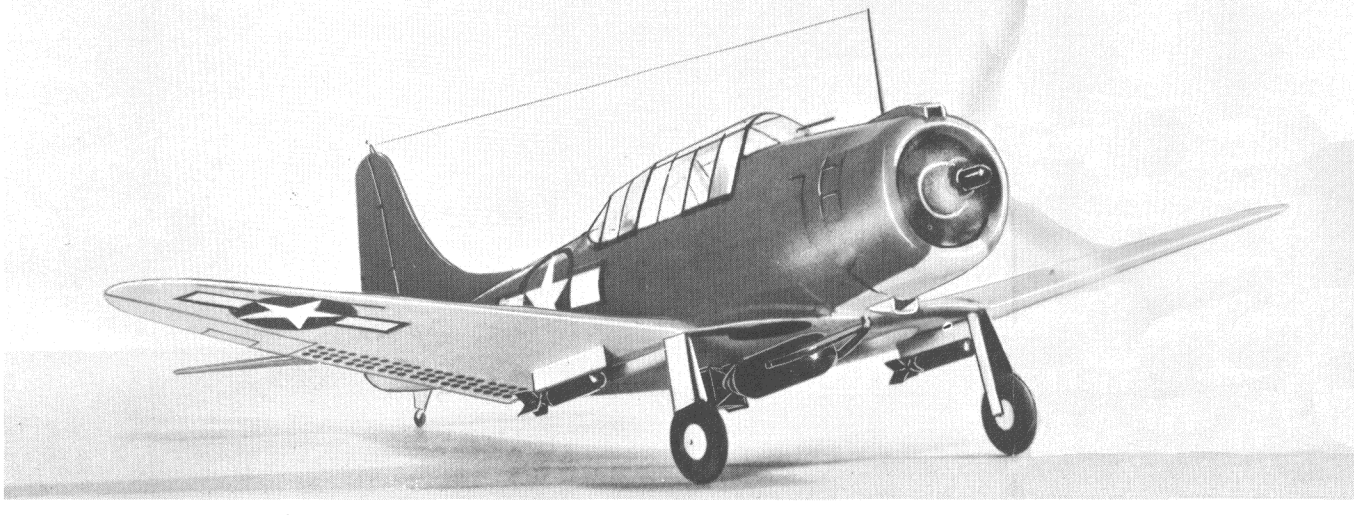
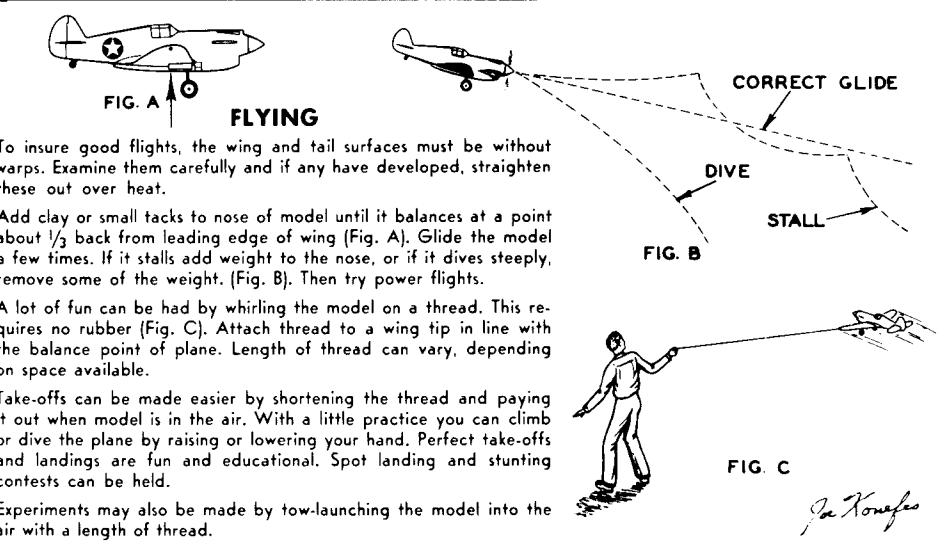
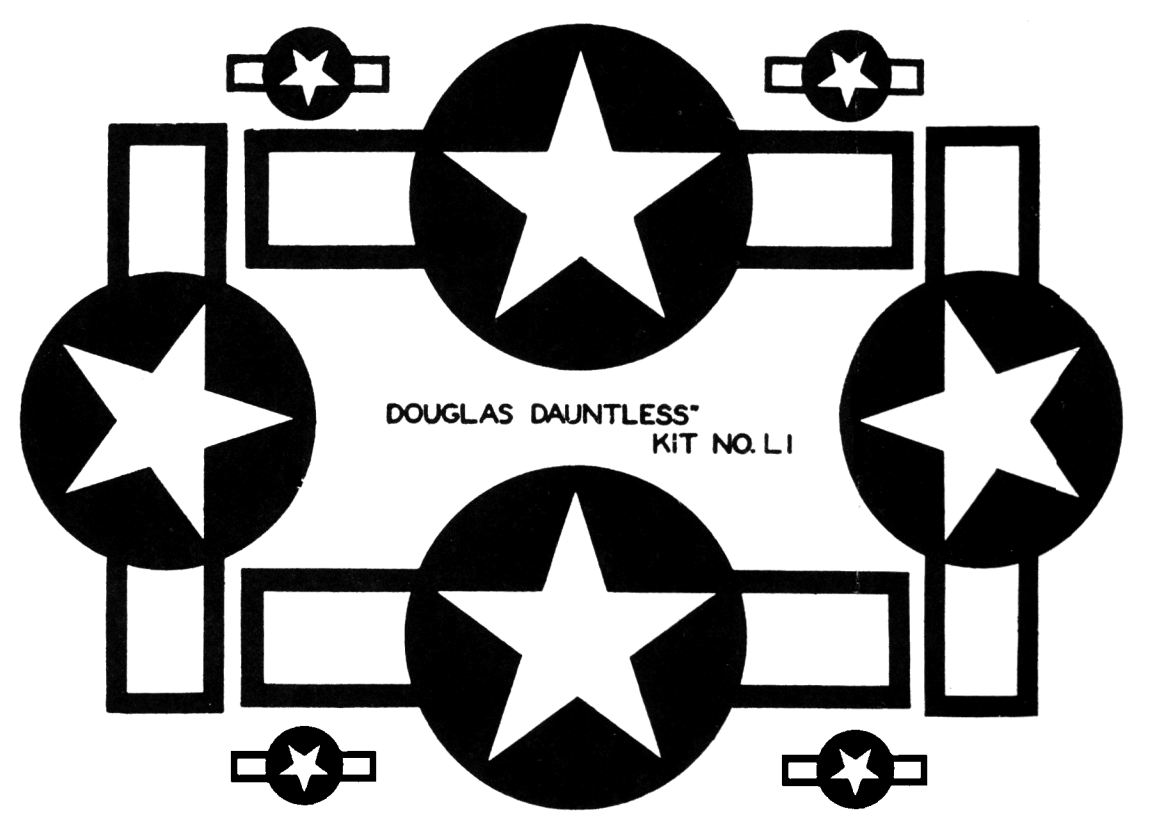
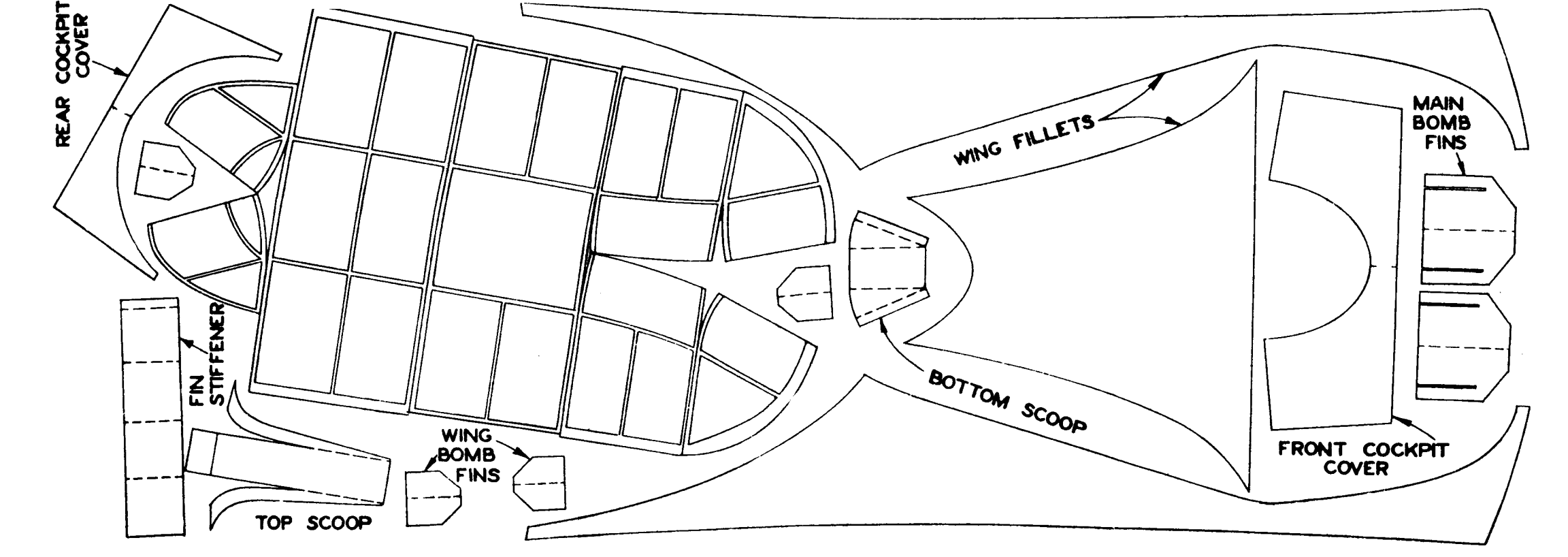
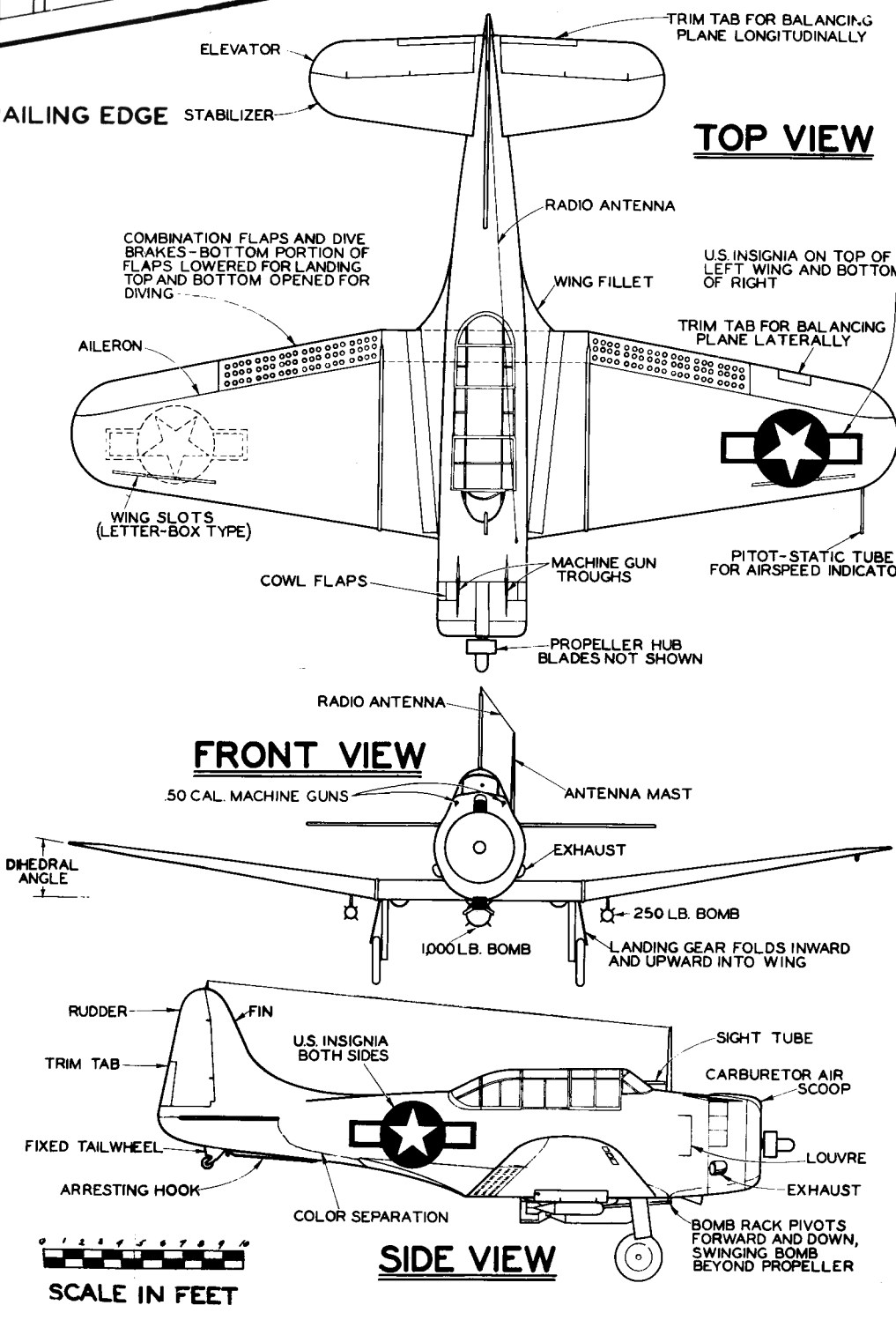
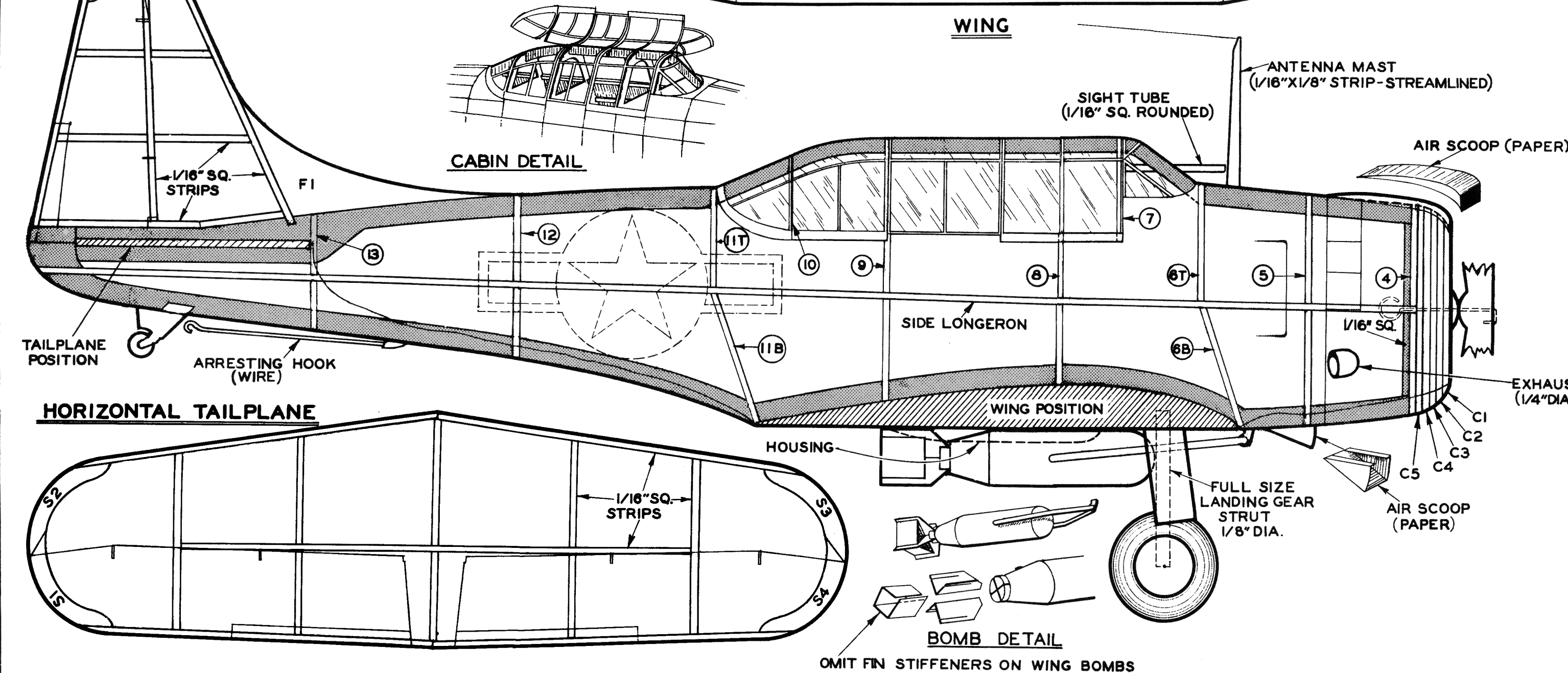
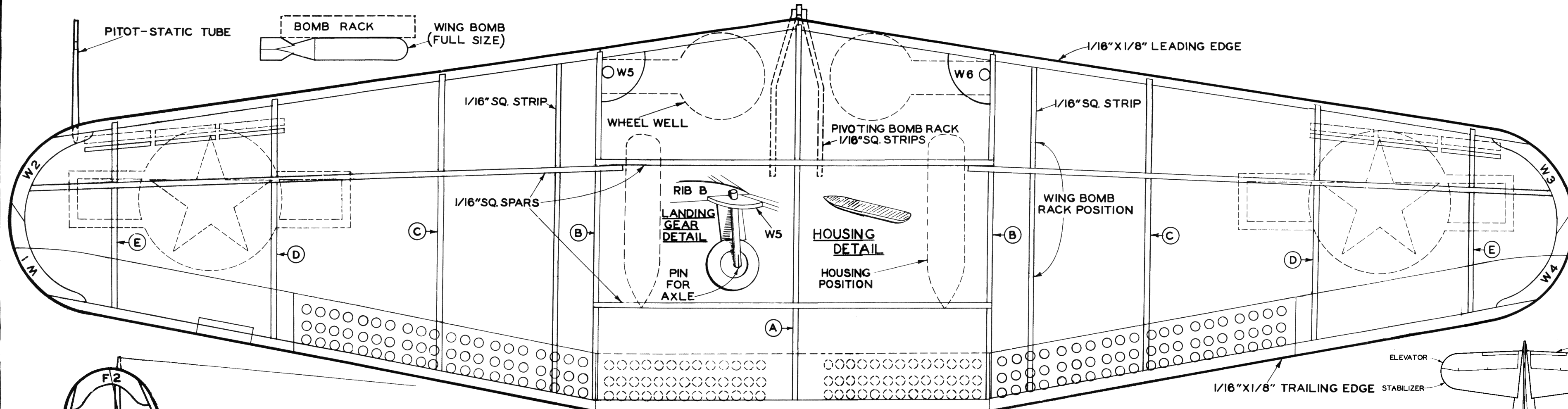
After wing and fuselage have been covered with tissue, assemble as shown, gluing center rib directly to bottom longeron. Comet SPEED-O-MATIC construction assures perfect alignment.

Glue stabilizer outline pieces together over the plan.

Build remainder of stabilizer from 1/16" sq. strips. When glue is dry, remove from plan and round off outer edges. Build fin in same manner.

To attach tail surfaces, slide stabilizer into slot and glue firmly. Some stabilizers are slid in from the side. Comet SPEED-O-MATIC construction assures correct angle of incidence of stabilizer.

Next glue fin in place. Make certain that fin and stabilizer are aligned in relation to wing.



**DOUGLAS "DAUNTLESS" SBD-3**

WINGSPAN 20 INCHES | LENGTH 15-7/16 INCHES

KIT NO. 3401 | DRAWN BY *Hollis Freeman*

COMET MODEL HOBBY CRAFT CORP., CHICAGO, ILL.

