

# DELTA 707

DESIGNED BY

F.W. Biesterfeld

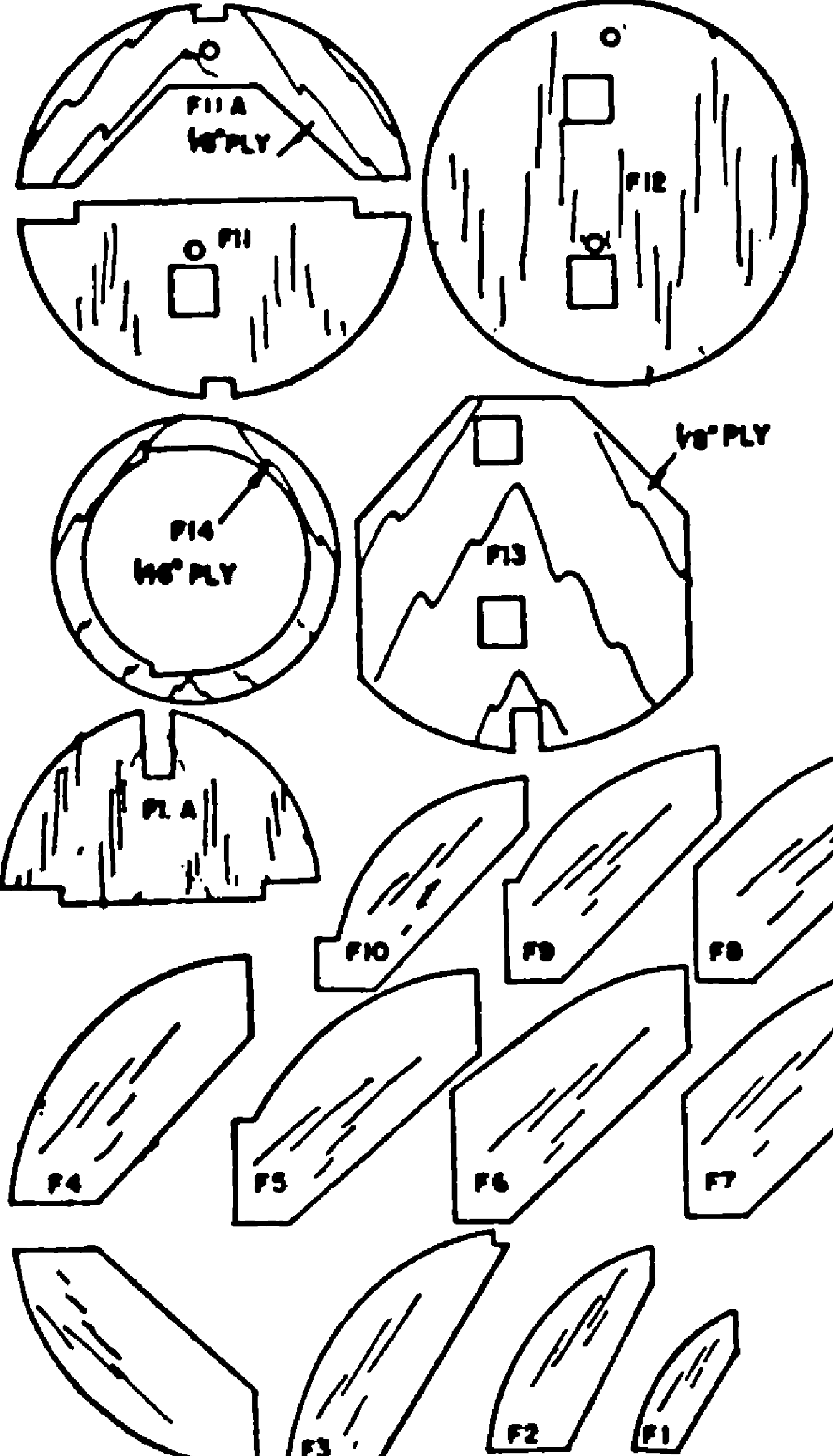
COPYRIGHT OF

THE AEROMODELLER PLANS SERVICE

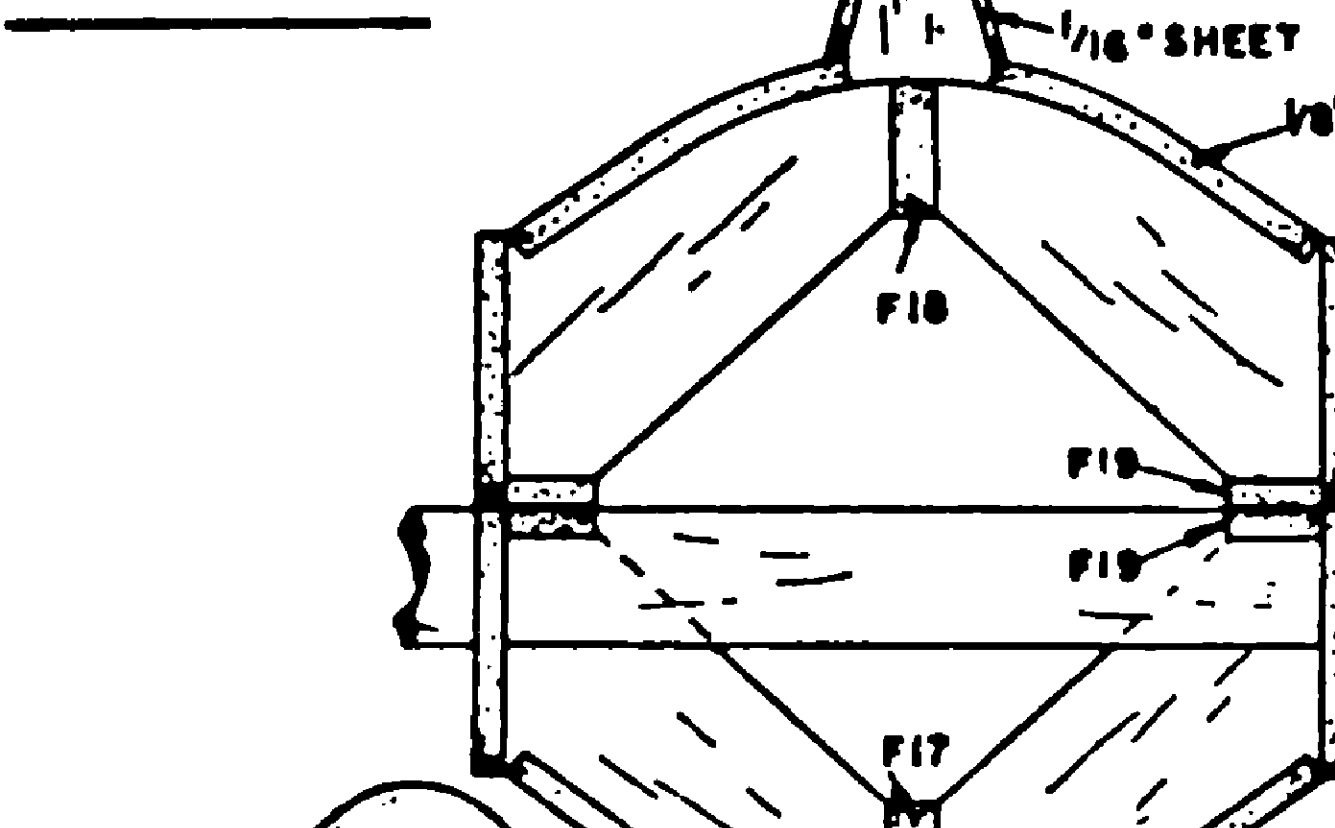
38, CLARENDON RD., WATFORD, HERTS

6'

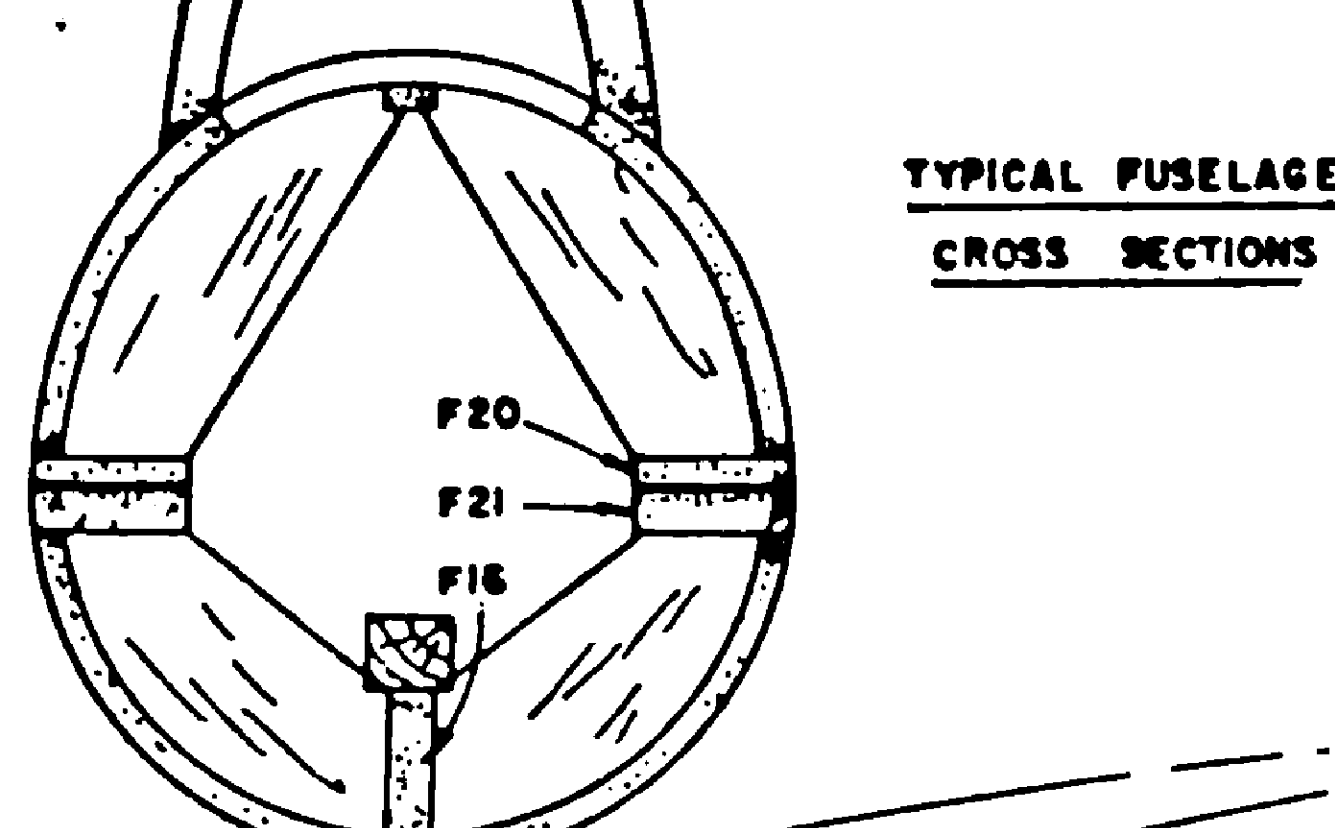
ALL WOODS ARE BALSA UNLESS OTHERWISE STATED



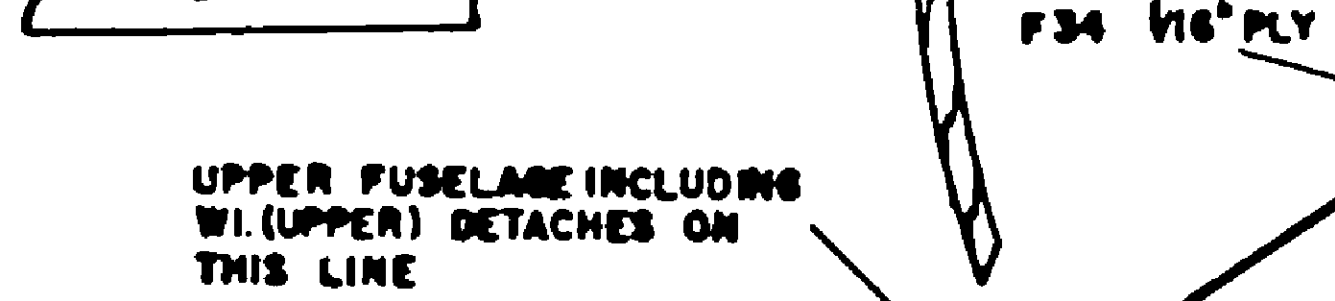
ALL FORMERS 3/16" SHEET UNLESS OTHERWISE STATED  
 F1 TO F4 2 OFF EACH  
 F5 TO F10 4 OFF  
 F20 3 OFF  
 ALL OTHERS 1 OFF



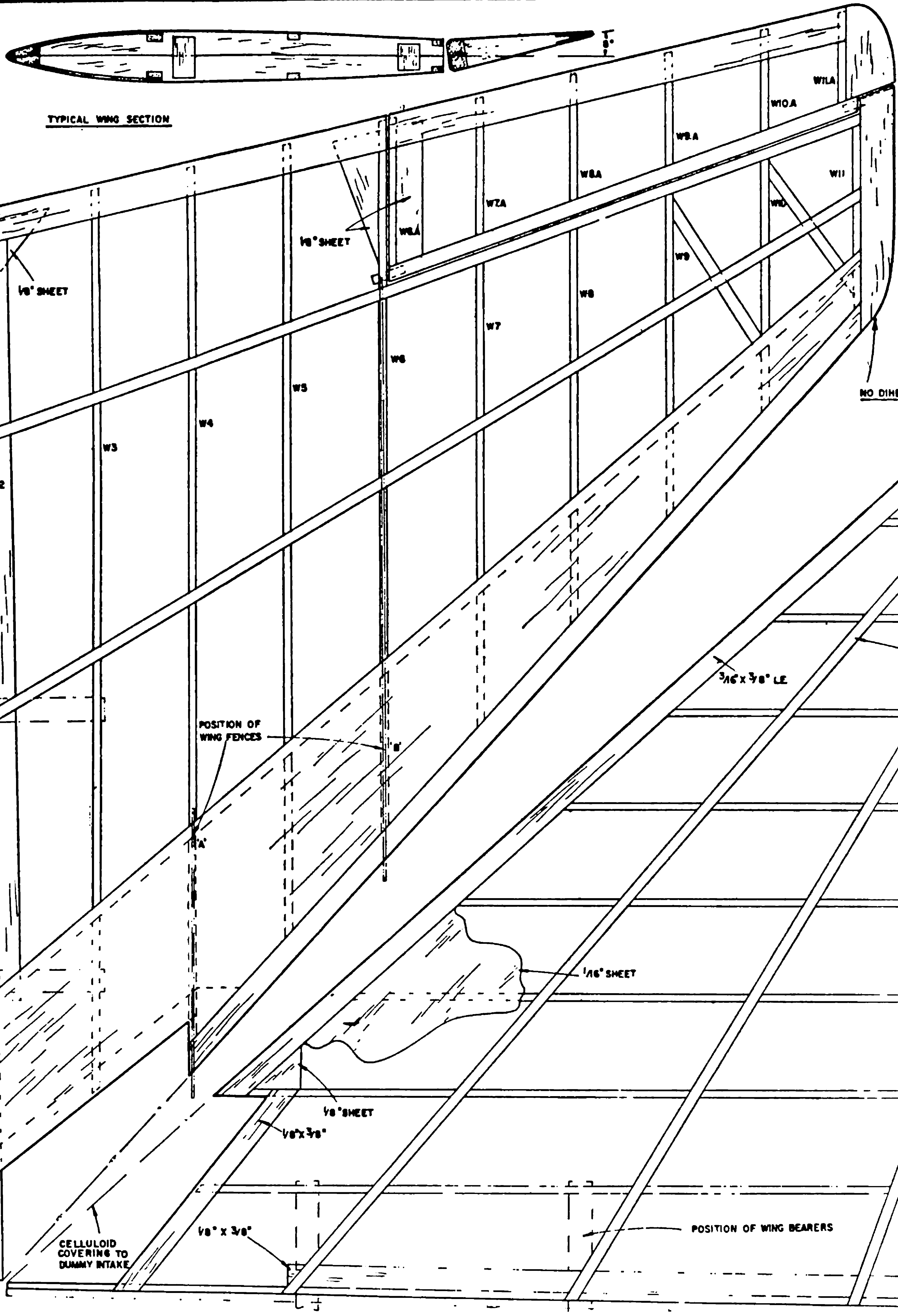
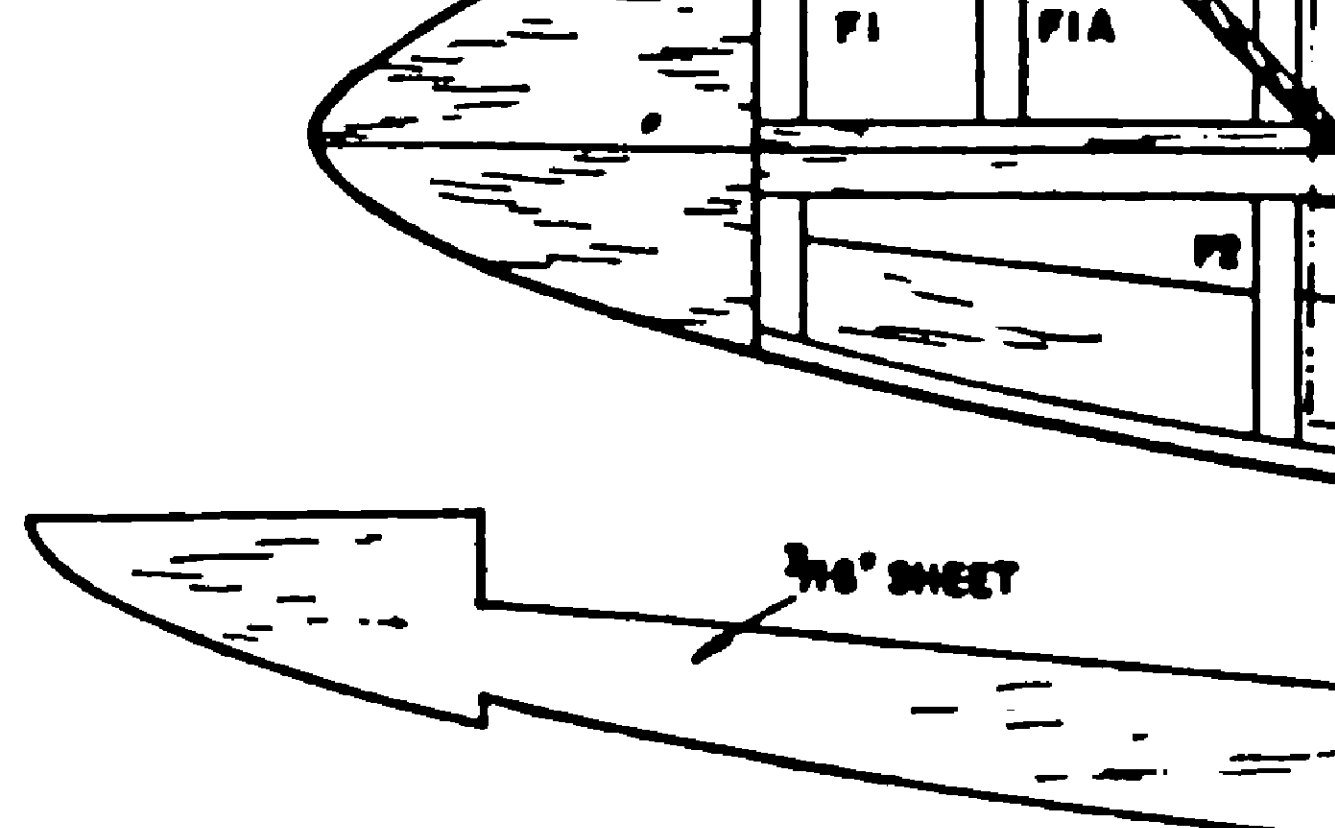
BLOCK CANOPY



TYPICAL FUSELAGE CROSS SECTIONS



UPPER FUSELAGE INCLUDING W1 (UPPER) DETACHES ON THIS LINE

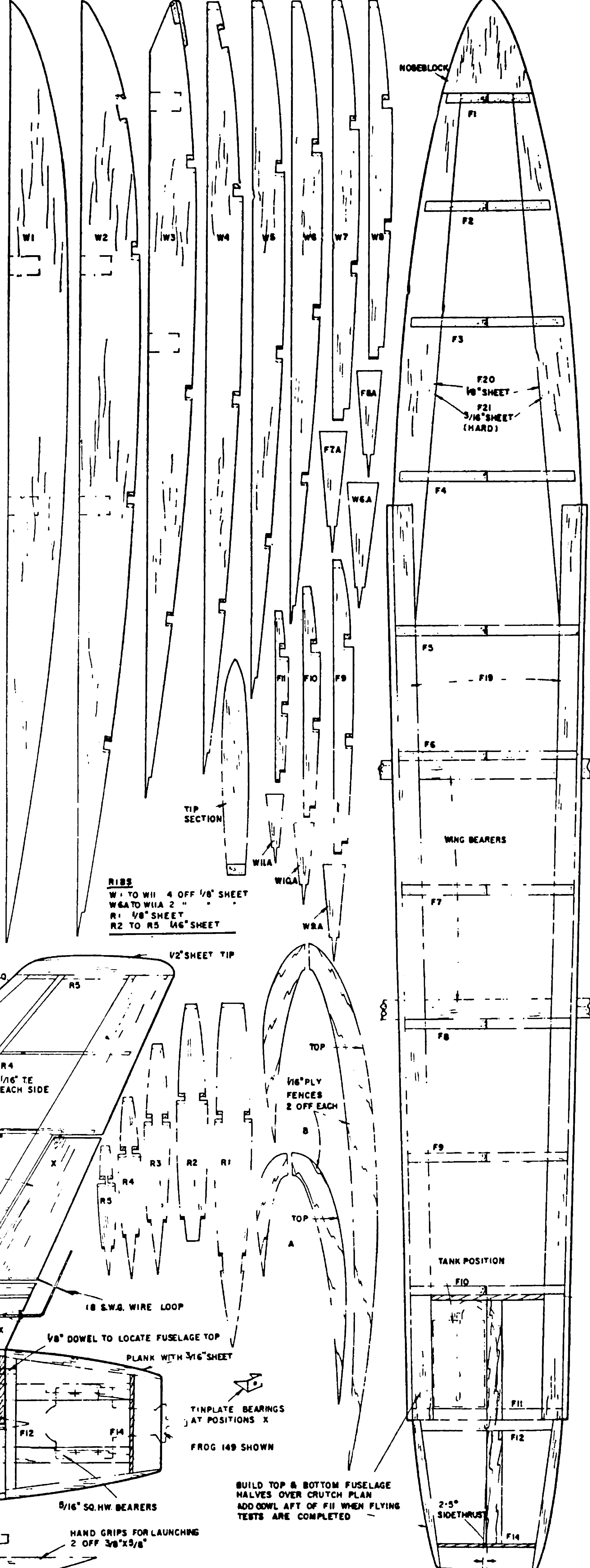
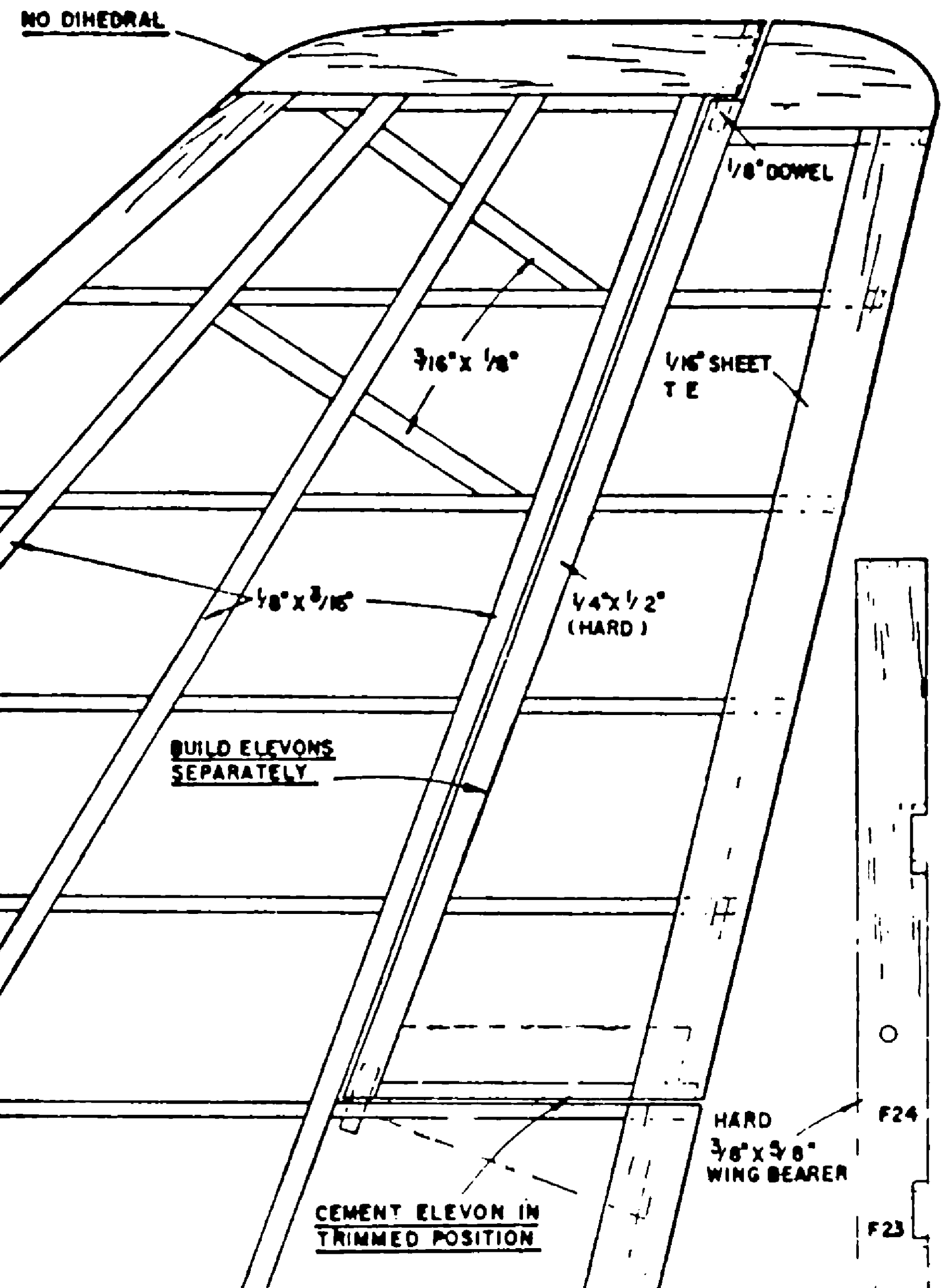


**MATERIALS REQUIRED**

3 SHEETS OF 1/8" X 3"	7" OF 2 1/4" X 3/4" BLOCK
6 " 1/8" X 3"	3' X 3" OF 1/8" PLY
1 SHEET " 3/16" X 3"	3' X 11" " 1/8" "
1 " 1/2" X 2"	14' OF 3/8" SQ. HARDWOOD
2 STRIPS OF 1/8" SQ	1 PIECE OF 18 SWG WIRE
7 " 1/8" X 3/16"	1 " " " " " " " "
4 " 1/8" X 1/2"	6' OF 1/8" DOWEL
2 " 3/16" X 3/8"	1' SQ OF TINPLATE
1 STRIP " 1/4" X 1/2"	8' X 6" " THICK CELLULOID
1 " 3/8" X 3/8"	3 SMALL SCREW HOOKS

COVER WHOLE MODEL WITH HEAVYWEIGHT MODELSPAN AND GIVE 2 COATS OF CLEAR DOPE

BUILD 4 WING HALVES FROM PLAN AND CEMENT OPPOSITE HANDED PAIRS TOGETHER, FORMING BI-CONVEX SECTION. ADD ELEVONS AND TIP BLOCKS LATER



RIBS  
 W1 TO W11 4 OFF 1/8" SHEET  
 W6 TO W11A 2 " "  
 R1 1/8" SHEET  
 R2 TO R5 1/16" SHEET

1/2" SHEET TIP

SAND TO 3/16" SQ AT TIP

R4 1/16" TE EACH SIDE

1/8" SQ

1/2" SHEET RUDDER

R2 18 SWG WIRE HINGE PINS

R1 1/2" SHEET STRAKE

1/16" SHEET SPINE SIDES

18 SWG WIRE LOOP

1/8" DOWEL TO LOCATE FUSELAGE TOP PLANK WITH 3/16" SHEET

TINPLATE BEARINGS AT POSITIONS X

FROG (48 SHOWN)

3/16" SQ HW BEARERS

HAND GRIPS FOR LAUNCHING 2 OFF 3/8" X 3/8"

BUILD TOP & BOTTOM FUSELAGE HALVES OVER CRUTCH PLAN ADD DOWL APT OF F11 WHEN FLYING TESTS ARE COMPLETED