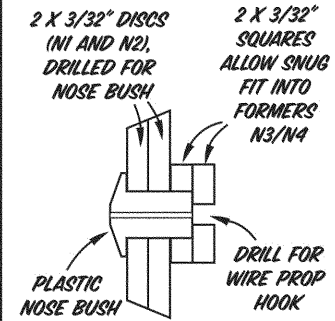


**DHEDRAL GAUGE**  
USE THIS GAUGE TO 'LEAN' ROOT RIBS. 25MM DHEDRAL REQ. UNDER EACH WING TIP

**USE 7 INCH PLASTIC PROP.**

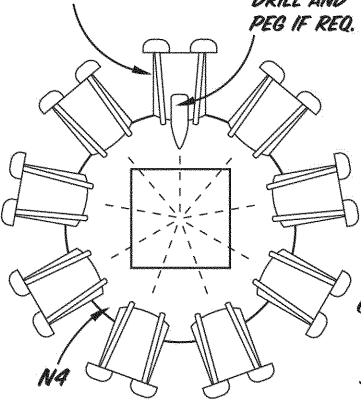
**NOSE PLUG DETAIL**



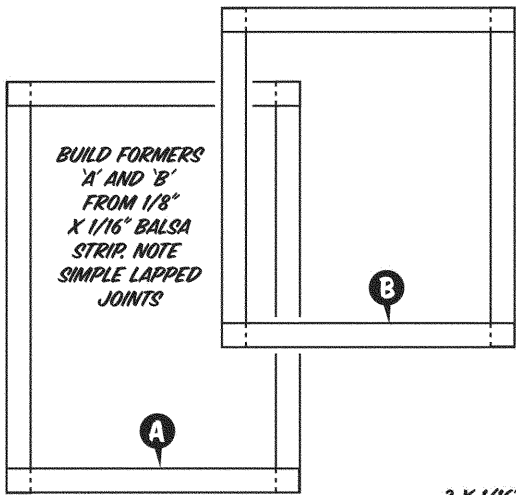
*Keep it light!*

MAKE UP 9 ENGINE CYLINDERS WITH PUSHRODS AND ROCKER COVERS

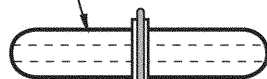
FRONT VIEW OF DUMMY ENGINE. USE BAMBOO OR GRASS FOR PUSHRODS



BUILD FORMERS 'A' AND 'B' FROM 1/8" X 1/16" Balsa STRIP. NOTE SIMPLE LAPPED JOINTS



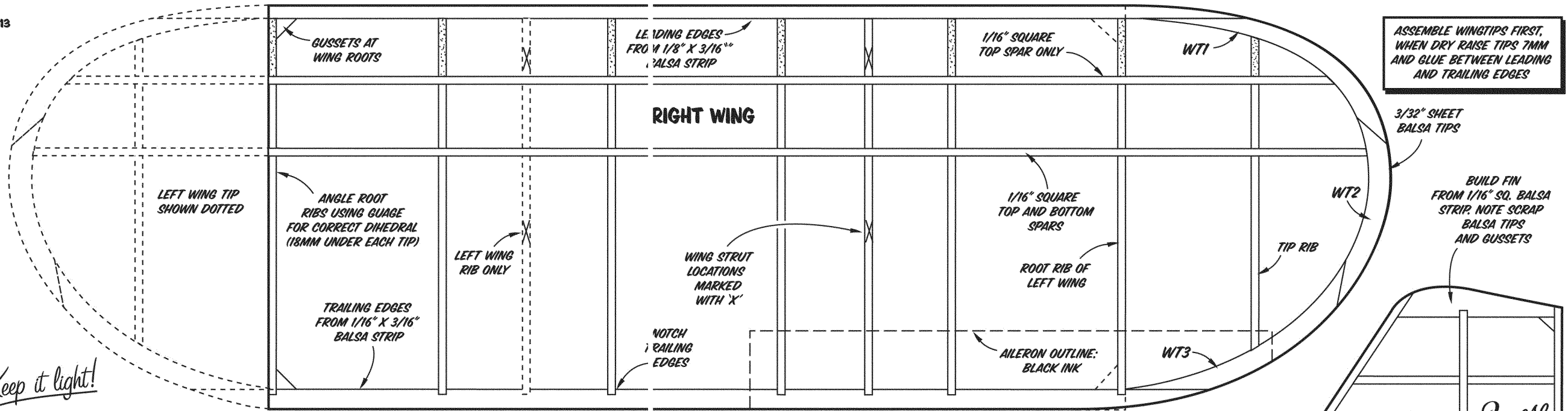
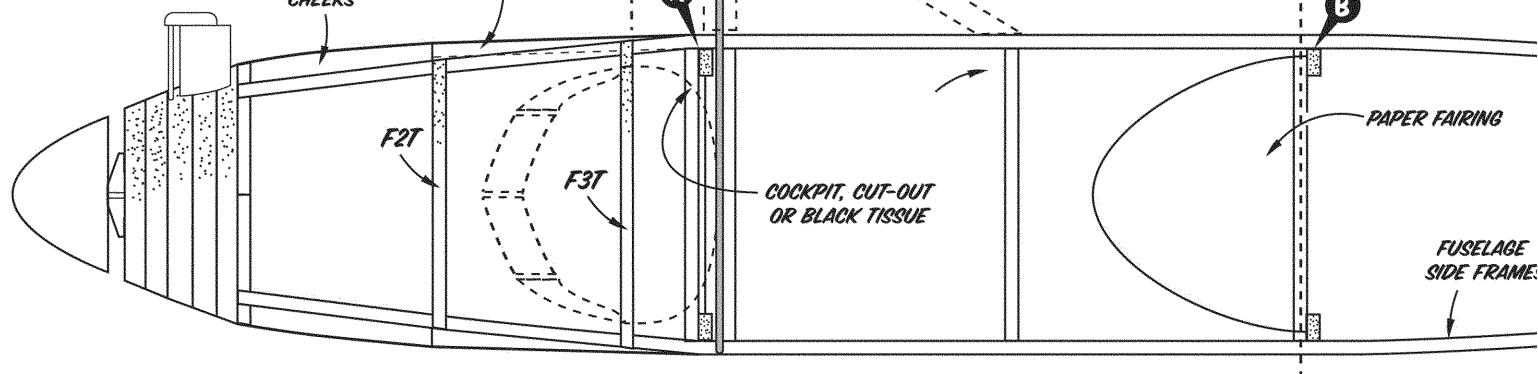
MAKE UP WHEELS FROM LAMINATIONS OF SOFT 3/32" Balsa SHEET. USE ALUMINIUM TUBE FOR BEARINGS



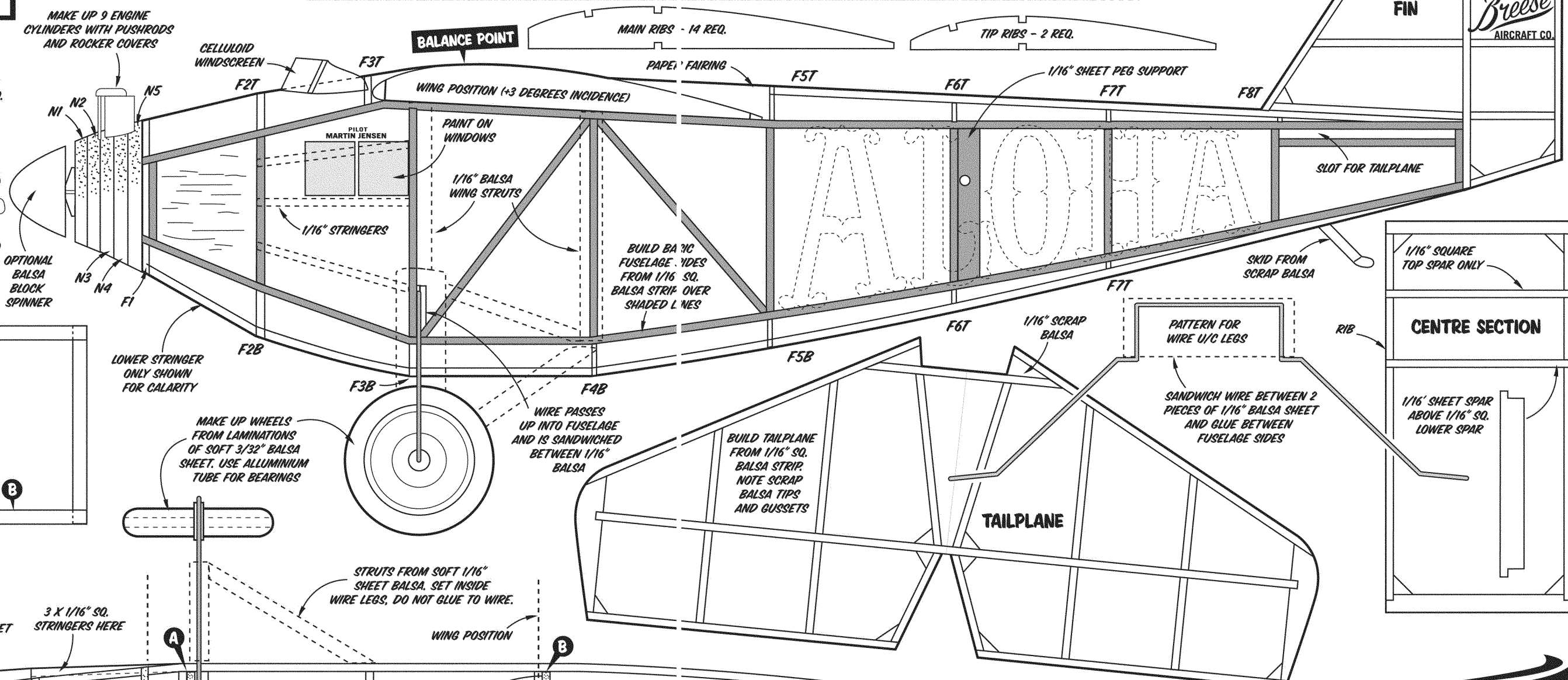
STRUTS FROM SOFT 1/16" SHEET Balsa. SET INSIDE WIRE LEGS, DO NOT GLUE TO WIRE.

3 X 1/16" SQ. STRINGERS HERE

COCKPIT, CUT-OUT OR BLACK TISSUE



**BALANCE POINT**



**Breese-5**  
★ ALOHA ★  
RUNNER UP IN THE 1927 'DOLE' PINEAPPLE DERBY  
DESIGNED AND DRAWN BY  
Richard Crossley