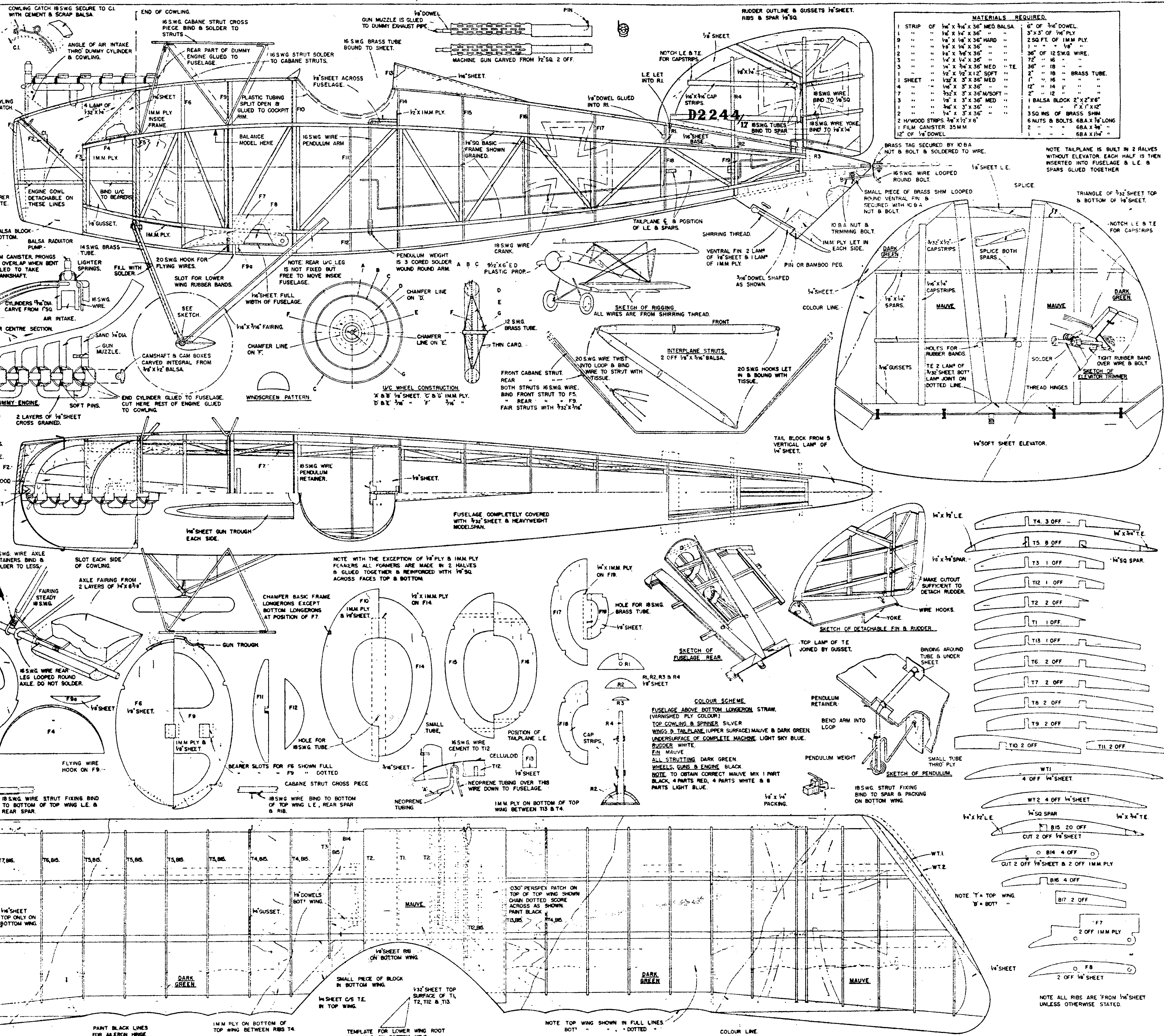
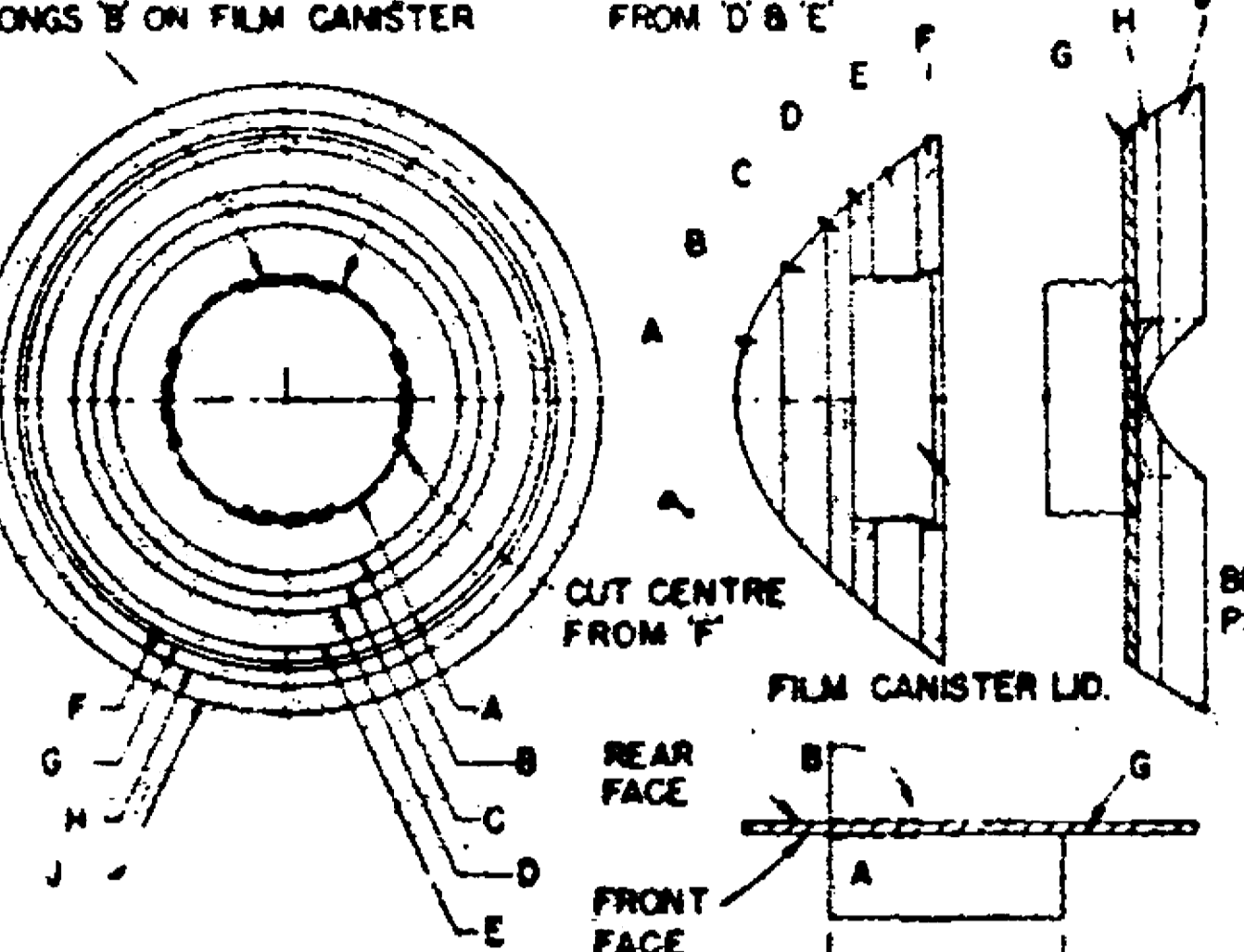


ALL WOODS ARE Balsa UNLESS OTHERWISE STATED.  
 CUT 4 SLOTS IN 'D' TO TAKE PRONGS 'E' ON FILM CANISTER



**MATERIALS REQUIRED**

1	STRIP OF	1/8" X 3/16" X 36" MED Balsa	6" of 1/8" DOWEL
1	"	1/8" X 1/4" X 36" "	3' X 3' of 1/8" PLY
9	"	1/8" X 1/8" X 36" HARD "	2.50 FT. of 1/8" PLY
1	"	1/8" X 1/4" X 36" "	1" - " - 1/8"
2	"	1/8" X 3/8" X 36" "	36' OF 12 SWG WIRE
3	"	1/4" X 1/2" X 36" "	12" - " - 1/8"
3	"	1/4" X 3/4" X 36" MED "	36" - " - 1/8"
1	"	1/2" X 1/2" X 12" SOFT "	2" - " - 1/8" BRASS TUBE
1	SHEET	1/32" X 3' X 36" MED "	1" - " - 1/8"
4	"	1/8" X 3' X 36" "	12" - " - 1/8"
7	"	1/32" X 3' X 36" W/SOFT "	2" - " - 1/8"
1	"	1/8" X 3' X 36" MED "	1" - " - 1/8"
2	"	1/4" X 3' X 36" "	1 Balsa BLOCK 2" X 2" X 6"
1	"	1/4" X 3' X 36" "	1 Balsa BLOCK 2" X 2" X 12"
1	"	1/4" X 3' X 36" "	350 MS OF BRASS SHM
2	1/4" WOOD STRIPS	3/8" X 1/2" X 6"	6 NUTS & BOLTS 6BA X 7/8" LONG
1	FILM CANISTER	35MM	2 - " - 6BA X 3/8"
1	"	12" OF 1/8" DOWEL	1 - " - 6BA X 1/4"

FULL SIZE COPIES OF THIS 1/6TH SCALE REPRODUCTION CAN BE OBTAINED PRICE 7/6 POST FREE FROM AEROMODELLER PLANS SERVICE, PLEASE QUOTE PLAN NUMBER FSP646 WHEN PLACING YOUR ORDER